

University of Missouri, St. Louis

IRL @ UMSL

---

UMSL Patents

---

3-30-2021

## Method and system for non-invasive optical blood glucose detection utilizing spectral data analysis

Zhi Xu

zhixu@umsl.edu

Follow this and additional works at: <https://irl.umsl.edu/patents>

---

### Recommended Citation

Xu, Zhi, "Method and system for non-invasive optical blood glucose detection utilizing spectral data analysis" (2021). *UMSL Patents*. 53.  
<https://irl.umsl.edu/patents/53>

This Book is brought to you for free and open access by IRL @ UMSL. It has been accepted for inclusion in UMSL Patents by an authorized administrator of IRL @ UMSL. For more information, please contact [marvinh@umsl.edu](mailto:marvinh@umsl.edu).



(12) **United States Patent**  
**Xu**

(10) **Patent No.:** **US 10,959,650 B2**  
(45) **Date of Patent:** **\*Mar. 30, 2021**

(54) **METHOD AND SYSTEM FOR  
NON-INVASIVE OPTICAL BLOOD GLUCOSE  
DETECTION UTILIZING SPECTRAL DATA  
ANALYSIS**

(71) Applicant: **St. Louis Medical Devices, Inc.**,  
Sunnyvale, CA (US)

(72) Inventor: **Zhi Xu**, St. Louis, MO (US)

(73) Assignee: **St. Louis Medical Devices, Inc.**,  
Sunnyvale, CA (US)

(\*) Notice: Subject to any disclaimer, the term of this  
patent is extended or adjusted under 35  
U.S.C. 154(b) by 513 days.

This patent is subject to a terminal dis-  
claimer.

(21) Appl. No.: **15/806,242**

(22) Filed: **Nov. 7, 2017**

(65) **Prior Publication Data**  
US 2018/0055425 A1 Mar. 1, 2018

**Related U.S. Application Data**  
(60) Continuation of application No. 13/610,387, filed on  
Sep. 11, 2012, now Pat. No. 9,814,415, which is a  
(Continued)

(51) **Int. Cl.**  
**A61B 5/145** (2006.01)  
**A61B 5/1455** (2006.01)  
(Continued)

(52) **U.S. Cl.**  
CPC ..... **A61B 5/14532** (2013.01); **A61B 5/1455**  
(2013.01); **A61B 5/6826** (2013.01);  
(Continued)

(58) **Field of Classification Search**  
CPC combination set(s) only.  
See application file for complete search history.

(56) **References Cited**

U.S. PATENT DOCUMENTS

2,441,343 A 5/1948 Becker  
3,621,268 A 11/1971 Friedrich et al.  
(Continued)

FOREIGN PATENT DOCUMENTS

CN 1192665 9/1998  
CN 2694097 Y 4/2005  
(Continued)

OTHER PUBLICATIONS

Unfavorable opinion dated Jul. 31, 2019 for Brazilian Application  
No. PI0816925-0.

(Continued)

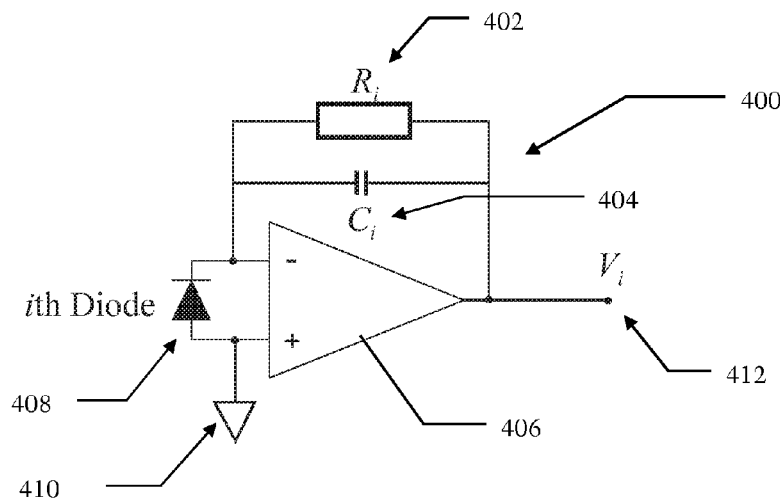
*Primary Examiner* — Sean P Dougherty

(74) *Attorney, Agent, or Firm* — Haverstock & Owens  
LLP

(57) **ABSTRACT**

Systems and methods are disclosed for non-invasively mea-  
suring blood glucose levels in a biological sample based on  
spectral data. This includes at least one light source config-  
ured to strike a target area of a sample, at least one light  
detector, which includes a preamplifier having a feedback  
resistor, positioned to receive light from the at least one light  
source and to generate an output signal, having a time  
dependent current, which is indicative of the power of light  
detected, and a processor configured to receive the output  
signal from the at least one light detector and based on the  
received output signal, calculate the attenuance attributable  
to blood in a sample present in the target area and eliminate  
effect of uncertainty caused by temperature dependent detec-  
tor response of the at least one light detector, and based on  
the calculated attenuance, determine a blood glucose level  
associated with a sample.

**14 Claims, 4 Drawing Sheets**



**Related U.S. Application Data**

- division of application No. 12/425,535, filed on Apr. 17, 2009, now Pat. No. 8,340,738.
- (60) Provisional application No. 61/055,303, filed on May 22, 2008, provisional application No. 61/089,152, filed on Aug. 15, 2008.
- (51) **Int. Cl.**  
**A61B 5/00** (2006.01)  
**G06F 19/00** (2018.01)
- (52) **U.S. Cl.**  
 CPC ..... **A61B 5/6838** (2013.01); **A61B 5/7225** (2013.01); **G06F 19/00** (2013.01); **A61B 2562/0238** (2013.01); **A61B 2576/00** (2013.01)
- (56) **References Cited**

## U.S. PATENT DOCUMENTS

3,910,701 A	10/1975	Henderson et al.	6,424,849 B1	7/2002	Berman et al.
3,963,327 A	6/1976	Poirier	6,424,851 B1	7/2002	Berman et al.
3,954,560 A	10/1976	Henderson et al.	6,430,424 B1	9/2002	Berman et al.
4,014,321 A	3/1977	March	6,445,938 B1	9/2002	Berman et al.
4,632,559 A	12/1986	Brunsting	6,522,903 B1	2/2003	Berman et al.
4,655,225 A	4/1987	Dahne et al.	6,574,490 B2	6/2003	Abbink et al.
4,781,195 A	11/1988	Martin	6,671,528 B2	12/2003	Steuer et al.
4,836,782 A	6/1989	Gonser	6,684,099 B2	1/2004	Ridder et al.
4,962,311 A	10/1990	Poisel et al.	6,723,048 B2	4/2004	Fuller
4,997,769 A	3/1991	Lundsgaard et al.	6,731,963 B2	5/2004	Finarov et al.
5,009,230 A	4/1991	Hutchison	6,775,564 B1	8/2004	Peters et al.
5,028,787 A	7/1991	Rosenthal et al.	6,804,002 B2	10/2004	Fine et al.
5,077,476 A	12/1991	Rosenthal	6,833,540 B2	12/2004	MacKenzie et al.
5,086,229 A	2/1992	Rosenthal et al.	6,865,408 B1	3/2005	Abbink et al.
5,112,124 A	5/1992	Harjunmaa et al.	6,873,865 B2	3/2005	Steuer et al.
5,137,023 A	8/1992	Mendelson et al.	6,958,039 B2	11/2005	Burd et al.
5,183,042 A	2/1993	Harjunmaa et al.	6,968,222 B2	11/2005	Burd et al.
5,222,496 A	6/1993	Clarke et al.	6,990,365 B1	1/2006	Parker et al.
5,255,171 A	10/1993	Clark	6,993,372 B2	1/2006	Fine et al.
5,282,473 A	2/1994	Braig et al.	7,039,446 B2	5/2006	Ruchti et al.
5,361,758 A	11/1994	Hall et al.	7,039,447 B2	5/2006	Berman et al.
5,423,983 A	6/1995	Chiang et al.	7,043,289 B2	5/2006	Fine et al.
5,448,992 A	9/1995	Kupersmidt	7,107,087 B2	9/2006	Hwang et al.
5,501,648 A	3/1996	Grigoriev	7,133,711 B2	11/2006	Chemoguz et al.
5,515,847 A	5/1996	Braig et al.	7,215,987 B1	5/2007	Sterling
5,522,388 A	6/1996	Ishikawa et al.	7,254,432 B2	8/2007	Fine et al.
5,529,065 A	6/1996	Tsuchiya	7,266,400 B2	9/2007	Fine et al.
5,535,743 A	7/1996	Backhaus et al.	7,409,239 B2	8/2008	Chung et al.
5,553,613 A	9/1996	Parker	7,424,317 B2	9/2008	Parker et al.
5,576,544 A	11/1996	Rosenthal	7,436,511 B2	10/2008	Ruchti et al.
5,615,672 A	4/1997	Braig et al.	7,809,418 B2	10/2010	Xu
5,615,673 A	4/1997	Berger et al.	7,961,305 B2	6/2011	Xu et al.
5,643,334 A	7/1997	Eckhouse et al.	8,272,771 B2	9/2012	Arai
5,666,956 A	9/1997	Buchert	8,340,738 B2	12/2012	Xu
5,671,301 A	9/1997	Kupersmidt	2001/0030742 A1	10/2001	Kramer et al.
5,703,364 A	12/1997	Rosenthal	2001/0039376 A1	11/2001	Steuer et al.
5,743,262 A	4/1998	Lepper, Jr. et al.	2001/0047137 A1	11/2001	Moreno et al.
5,910,109 A	6/1999	Peters et al.	2002/0010563 A1	1/2002	Ratteree et al.
6,025,597 A	2/2000	Sterling et al.	2002/0016534 A1	2/2002	Trepagnier et al.
6,043,492 A	3/2000	Lee et al.	2002/0019055 A1	2/2002	Brown et al.
6,064,898 A	5/2000	Aldrich	2002/0038080 A1	3/2002	Makarewicz et al.
6,067,463 A	5/2000	Jeng et al.	2002/0091324 A1	7/2002	Kollias et al.
6,097,975 A	8/2000	Petrovsky et al.	2002/0161289 A1	10/2002	Hopkins et al.
6,134,458 A	10/2000	Rosenthal	2002/0167704 A1	11/2002	Kleinhans et al.
6,134,460 A	10/2000	Chance	2003/0004423 A1	1/2003	Lavie et al.
6,151,517 A	11/2000	Honigs et al.	2003/0023140 A1	1/2003	Chance
6,167,290 A	12/2000	Yang et al.	2003/0023152 A1	1/2003	Abbink et al.
6,181,958 B1	1/2001	Steuer et al.	2003/0055325 A1	3/2003	Weber et al.
6,205,354 B1	3/2001	Gellermann et al.	2003/0078504 A1	4/2003	Rowe
6,208,788 B1	3/2001	Nosov	2003/0099574 A1	5/2003	Bentsen
6,304,767 B1	10/2001	Soller et al.	2004/0015734 A1	1/2004	Rahman
6,312,393 B1	11/2001	Abreu	2004/0087844 A1	5/2004	Yen
6,337,564 B2	1/2002	Manzini et al.	2004/0106163 A1	6/2004	Workman et al.
6,403,944 B1	6/2002	MacKenzie et al.	2004/0127779 A1	7/2004	Steuer et al.
6,412,548 B1	7/2002	Berman et al.	2004/0181132 A1	9/2004	Rosenthal
6,424,848 B1	7/2002	Berman et al.	2004/0204865 A1	10/2004	Lee et al.
			2004/0225205 A1	11/2004	Fine et al.
			2004/0225206 A1	11/2004	Kouchnir
			2005/0131286 A1	6/2005	Parker et al.
			2005/0197790 A1	9/2005	Sterling et al.
			2005/0261560 A1	11/2005	Ridder et al.
			2005/0272987 A1	12/2005	Kian-Azarbayjany et al.
			2005/0276072 A1	12/2005	Hayashi et al.
			2006/0002598 A1	1/2006	Rowe et al.
			2006/0004268 A1	1/2006	Cho et al.
			2006/0009685 A1	1/2006	Finarov et al.
			2006/0058622 A1	3/2006	Tearney et al.
			2006/0063983 A1	3/2006	Yamakoshi
			2006/0092643 A1	5/2006	Wong et al.
			2006/0129040 A1	6/2006	Fine et al.
			2006/0152726 A1	7/2006	Larsen et al.
			2006/0200014 A1	9/2006	Fine et al.
			2006/0224057 A1	10/2006	Burd et al.
			2006/0226992 A1	10/2006	Al-Ali et al.
			2006/0234386 A1	10/2006	Burns et al.
			2006/0250676 A1	11/2006	Hagood
			2006/0258918 A1	11/2006	Burd et al.
			2006/0264719 A1	11/2006	Schurman et al.
			2007/0049811 A1	3/2007	Kobayashi et al.

(56)

**References Cited****U.S. PATENT DOCUMENTS**

2007/0078312 A1 4/2007 Fine et al.  
 2007/0112258 A1 5/2007 Soyemi et al.  
 2007/0149869 A1 6/2007 Yen  
 2008/0027297 A1 1/2008 Yamakoshi  
 2008/0137066 A1 6/2008 Weinstein  
 2008/0144004 A1 6/2008 Rosenthal  
 2008/0194014 A1 8/2008 Young et al.  
 2008/0266900 A1 10/2008 Harbers et al.  
 2008/0316488 A1 12/2008 Mao  
 2009/0059586 A1 3/2009 Livesay et al.  
 2009/0079964 A1 3/2009 Xu  
 2009/0105565 A1 4/2009 Xu  
 2009/0116017 A1 5/2009 Xu et al.  
 2009/0196025 A1 8/2009 Joseph et al.  
 2009/0247843 A1 10/2009 Xu  
 2009/0270700 A1 10/2009 Van Herpen et al.  
 2009/0292186 A1 11/2009 Xu  
 2010/0026995 A1 2/2010 Merrit et al.  
 2010/0252721 A1 10/2010 Xu  
 2013/0006070 A1 1/2013 Xu  
 2013/0006072 A1 1/2013 Xu  
 2013/0006073 A1 1/2013 Xu

**FOREIGN PATENT DOCUMENTS**

CN 1932840 A 3/2007  
 EP 0160768 A1 11/1985  
 EP 0319159 A1 6/1989  
 EP 0781527 A1 7/1997  
 EP 01094745 A1 5/2001  
 EP 1281370 A2 2/2003  
 EP 1300712 A2 4/2003  
 EP 830582 B1 8/2005  
 GB 810256 A 3/1959  
 JP 56-156138 A 12/1981  
 JP 02-191434 A 7/1990  
 JP 07-088105 A 4/1995  
 JP 720551 U 4/1995  
 JP 9010238 1/1997  
 JP H0956702 A 3/1997  
 JP 11037931 A 2/1999  
 JP 11-178813 A 7/1999  
 JP 2000083933 A 3/2000  
 JP 2003245265 A 9/2003  
 JP 2004267613 A 9/2004  
 JP 2004286475 A 10/2004  
 JP 2004290544 A 10/2004  
 JP 2004538054 A 12/2004  
 JP 2005283563 A 10/2005  
 JP 2007185348 A 7/2007  
 JP 2009545344 A 12/2009  
 RU 2050545 C1 12/1995  
 RU 2188425 C2 8/2002  
 RU 2198402 C2 2/2003  
 SU 1193541 A1 11/1985  
 WO 90/130922 A1 11/1990  
 WO 1991015991 A1 10/1991  
 WO 1991015992 A1 10/1991  
 WO 92/00513 A1 1/1992  
 WO 1993000856 A1 1/1993  
 WO 93/06774 A1 4/1993  
 WO 93/16629 A1 9/1993  
 WO 1994013199 A1 6/1994  
 WO 1994016614 A1 8/1994  
 WO 95/05599 A1 2/1995  
 WO 1995031930 A1 11/1995  
 WO 1996004840 A1 2/1996  
 WO 1996017546 A1 6/1996  
 WO 96/39926 A1 12/1996  
 WO 96/41151 A1 12/1996  
 WO 1996039927 A1 12/1996  
 WO 1998003847 A2 1/1998  
 WO 1998036681 A1 8/1998  
 WO 99/16136 A1 4/1999  
 WO 199939631 A1 8/1999

WO 2000001294 A1 1/2000  
 WO 2000016688 A1 3/2000  
 WO 01/16578 A1 3/2001  
 WO 2001093755 A1 12/2001  
 WO 2001096872 A2 12/2001  
 WO 2002082990 A1 10/2002  
 WO 03001177 A2 1/2003  
 WO 2003010510 A2 2/2003  
 WO 03/077756 A1 9/2003  
 WO 2003079900 A1 10/2003  
 WO 2005045377 A2 5/2005  
 WO 2006086566 A2 8/2006  
 WO 2006094109 A1 9/2006  
 WO 2007122557 A2 11/2007  
 WO 2008014890 A1 2/2008  
 WO 2008/039195 A1 4/2008  
 WO 2009/035669 A1 3/2009  
 WO 2009/045492 A1 4/2009  
 WO 2009/120600 A2 10/2009  
 WO 2009/142853 A1 11/2009  
 WO 2010017238 A1 2/2010  
 WO 2010114736 10/2010

**OTHER PUBLICATIONS**

The Hearing Notice dated Nov. 8, 2019 from Indian Patent application No. 1186/KOLNP/2010.

European First Examination Report dated Jun. 4, 2018. EP Application No. 10759220.6.

The Office Action dated May 21, 2019 for Brazilian Patent Application No. PI0909825-9.

Office Action for CN Application 200880114960.3 dated Feb. 17, 2015.

Office Action for EP Application 09751083.8 dated Feb. 24, 2015.

Office Action for CN Application 201310489245.0 dated Feb. 26, 2015.

Office Action for CA Application 2699626 dated Feb. 27, 2015.

Office Action for JP Application 2012-503498 dated Mar. 31, 2015.

Office Action dated for RU Application 2011144084 dated Apr. 17, 2015.

Office Action for CA Application 2700996 dated Aug. 7, 2015.

Office Action for U.S. Appl. No. 12/407,999 dated Jan. 5, 2016.

Office Action for JP Application 2014-245584 dated Jan. 5, 2016, includes English Translation.

Office Action for CN Application 201310489245 dated Jan. 25, 2016.

Office Action for EP Application 9751083.8 dated Jan. 26, 2016.

Extended European Search Report for EP Application 08836010.2 dated Mar. 8, 2016.

Office Action for U.S. Appl. No. 13/610,423 dated Mar. 24, 2016.

Office Action for CA Application 2789658 dated Mar. 30, 2016.

Office Action for U.S. Appl. No. 13/610,342 dated Apr. 14, 2016.

Office Action for U.S. Appl. No. 13/610,387 dated Apr. 14, 2016.

Office Action for U.S. Appl. No. 13/610,140 dated May 13, 2016.

International Preliminary Report on Patentability (Chapter II) for PCT/US2009/037805 dated Dec. 14, 2010.

European Search Report from European Application No. 17159427.8.

Attached please find the Office Action dated Jun. 30, 2017 for the Indian application No. 4886/KOLNP/2010.

Texas Instruments TSL260, TSL261, TSL262 IR Light-To-Voltage Optical Sensors 1993.

The Office Action dated Dec. 21, 2018 for Brazilian Patent Application No. PI0816925-0.

European Search Report dated Aug. 21, 2019 for European Application No. 19178081.6.

Indian Examination Report dated Apr. 13, 2018, Application No. 4144/KOLNP/2011.

Wagner et al., "Invasiveness as a Barrier to Self-Monitoring of Blood Glucose in Diabetes", Diabetes Technology & Therapeutics, Aug. 1, 2005.

Web Page Document entitled [http://www.oreense.com/Diabetes\\_Monitoring](http://www.oreense.com/Diabetes_Monitoring) dated Aug. 9, 2007.

(56)

**References Cited**

**OTHER PUBLICATIONS**

International Search Report for PCT/US/2008/010670 dated Nov. 21, 2008.  
 International Search Report for PCT/US/2008/011438 dated Dec. 9, 2008.  
 Office Action for U.S. Appl. No. 12/209,807 dated May 17, 2010.  
 International Search Report and Written Opinion for PCT/US2010/028255 dated May 19, 2010.  
 Office Action for U.S. Appl. No. 12/256,028 dated May 24, 2010.  
 International Preliminary Report on Patentability (Chapter II) for PCT/US2008/011438 dated Jun. 18, 2010.  
 Office Action for U.S. Appl. No. 12/256,028 dated Sep. 15, 2010.  
 Office Action for U.S. Appl. No. 12/209,807 dated Sep. 17, 2010.  
 International Preliminary Report on Patentability (Chapter II) for PCT/US2009/040942 dated Dec. 13, 2010.  
 Office Action for U.S. Appl. No. 12/425,535 dated Mar. 22, 2012.  
 Office Action for U.S. Appl. No. 12/407,999 dated Apr. 6, 2012.  
 Office Action for U.S. Appl. No. 12/425,535 dated May 16, 2012.  
 Office Action for CN Application 200980126116.7 dated Jun. 4, 2012.  
 Office Action for RU Application 2010117396 dated Jun. 18, 2012.  
 Office Action for RU Application 2010114587 dated Jun. 22, 2012.  
 Office Action for U.S. Appl. No. 12/729,886 dated Oct. 2, 2012.  
 Office Action for U.S. Appl. No. 12/407,999 dated Nov. 21, 2012.  
 Office Action for JP Application 2010-524873 dated Dec. 25, 2012.  
 Office Action for JP Application 2010-527994 dated Dec. 25, 2012.  
 Office Action for CN Application 200880114960.3 dated Jan. 29, 2013.  
 Office Action for CN Application 200980126116.7 dated Feb. 16, 2013.  
 Office Action for U.S. Appl. No. 12/729,886 dated Mar. 12, 2013.  
 Office Action for RU Application 2010152373 dated Mar. 26, 2013.  
 Extended European Search Report for EP Application 08830786.3 dated Apr. 22, 2013.  
 Office Action for JP Application 2011-501936 dated Jun. 25, 2013.

Office Action for CN Application 201080022242.0 dated Jul. 4, 2013.  
 Extended European Search Report for EP Application 09751083.8 dated Jul. 26, 2013.  
 Office Action for AU Application 2010232841 dated Aug. 13, 2013.  
 Office Action for AU Application 2008299938 dated Sep. 13, 2013.  
 Office Action for U.S. Appl. No. 12/407,999 dated Oct. 10, 2013.  
 Office Action for CN Application 200980126116.7 dated Oct. 17, 2013.  
 Office Action for JP Application 2010-524873 dated Nov. 19, 2013.  
 Office Action for JP Application 2011-510533 dated Dec. 3, 2013.  
 Examiner's Decision of Rejection for JP Application 2010-527994 dated Dec. 10, 2013.  
 Office Action for CN Application 201210419849.3 dated Jan. 6, 2014.  
 Office Action for EP Application 08830786.3 dated Jan. 10, 2014.  
 Office Action for CN Application 201210420843.8 dated Feb. 17, 2014.  
 Office Action for CN Application 201210419740.X dated Feb. 28, 2014.  
 Office Action for CN Application 201080022242.0 dated Mar. 12, 2014.  
 Office Action for RU Application 2010114587 dated Mar. 25, 2014.  
 Office Action for EP Application 09751083.8 dated Mar. 28, 2014.  
 Office Action for CA Application 2700996 dated Jul. 30, 2014.  
 Office Action for JP Application 2011-501936 dated Aug. 5, 2014.  
 Office Action for U.S. Appl. No. 12/407,999 dated Nov. 20, 2014.  
 Office Action for CN Application 201210420830.0 dated Jan. 5, 2015.  
 Office Action for U.S. Appl. No. 13/610,342 dated Jan. 21, 2015.  
 Office Action for U.S. Appl. No. 13/610,423 dated Jan. 22, 2015.  
 Office Action for U.S. Appl. No. 13/610,387 dated Jan. 22, 2015.  
 The Decision for Refusal dated Feb. 13, 2020, from European Patent application No. EP10 759 220.6.  
 The Office Action dated Jul. 7, 2020 for the Brazilian application No. PI1010304-0.  
 First Examination Report dated Oct. 27, 2017 for the Indian Application No. 1186/KOLNP/2010.

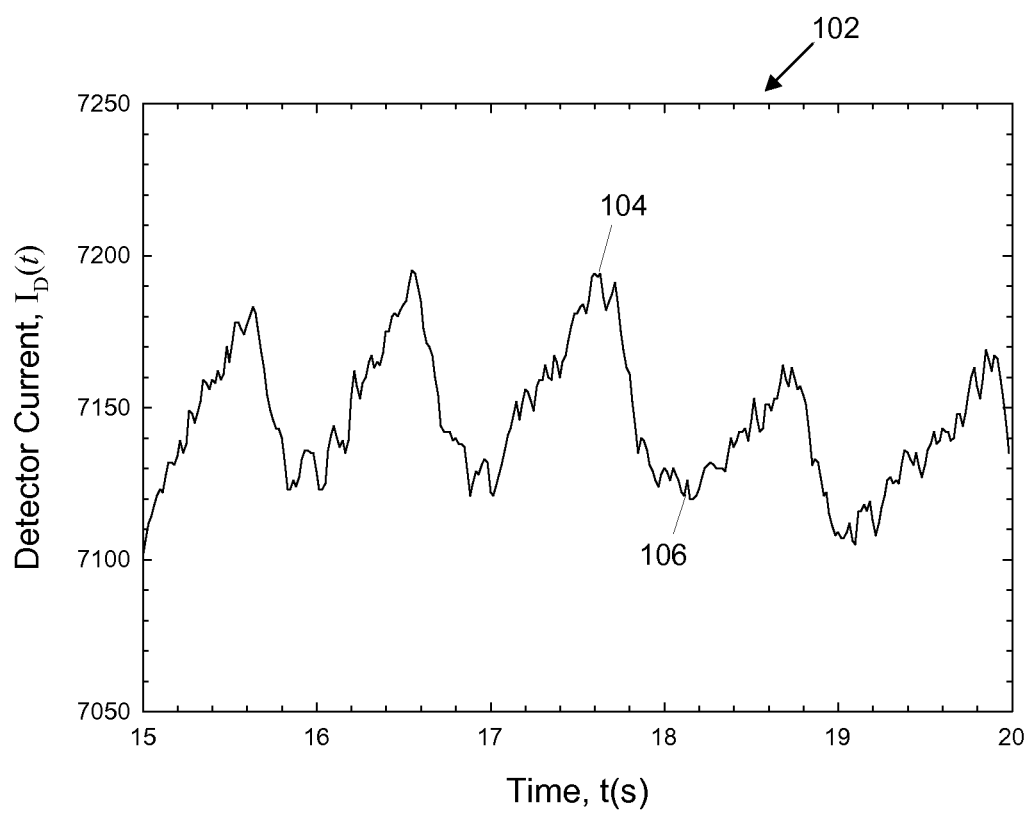
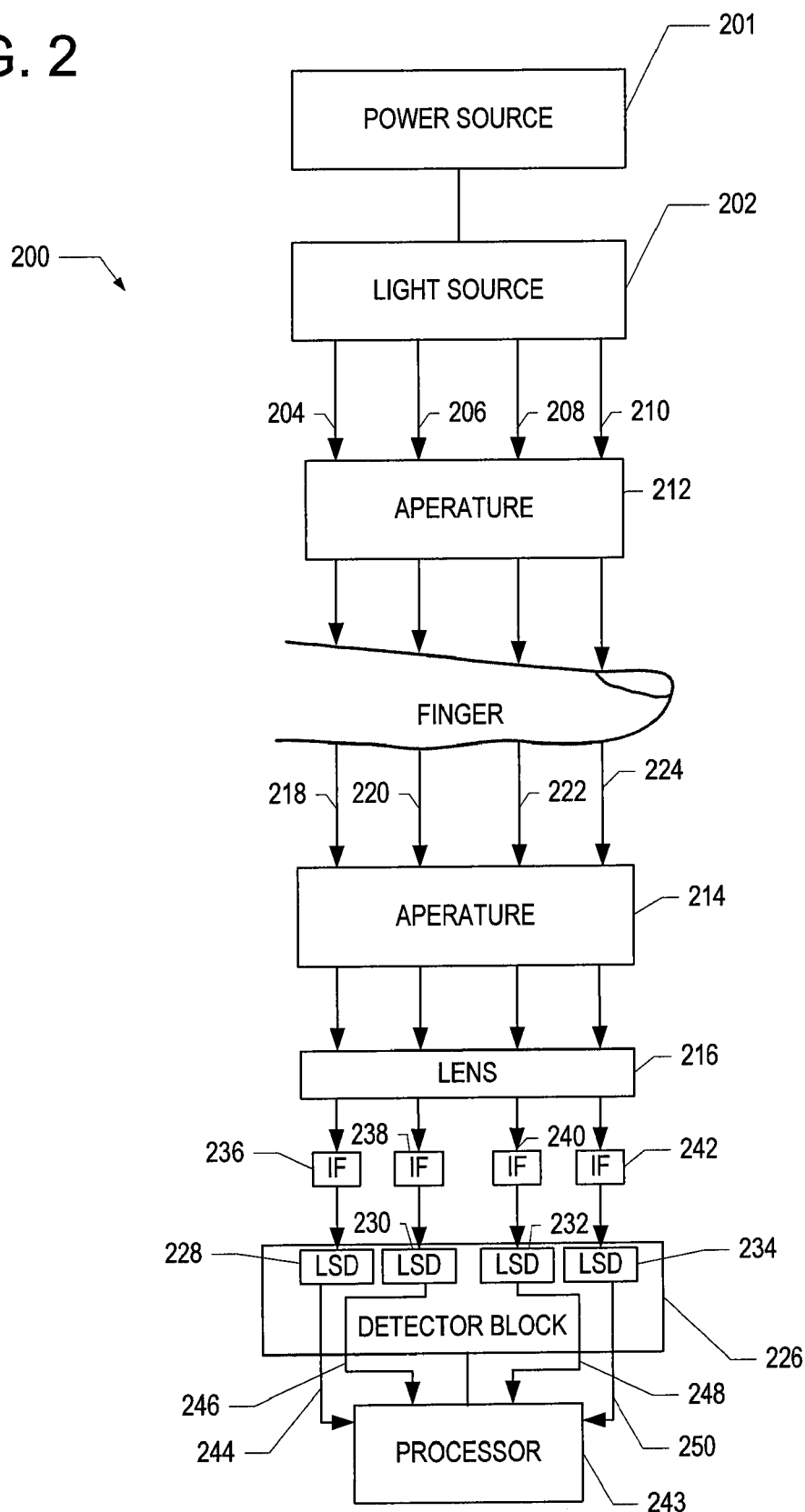


FIG. 1

FIG. 2



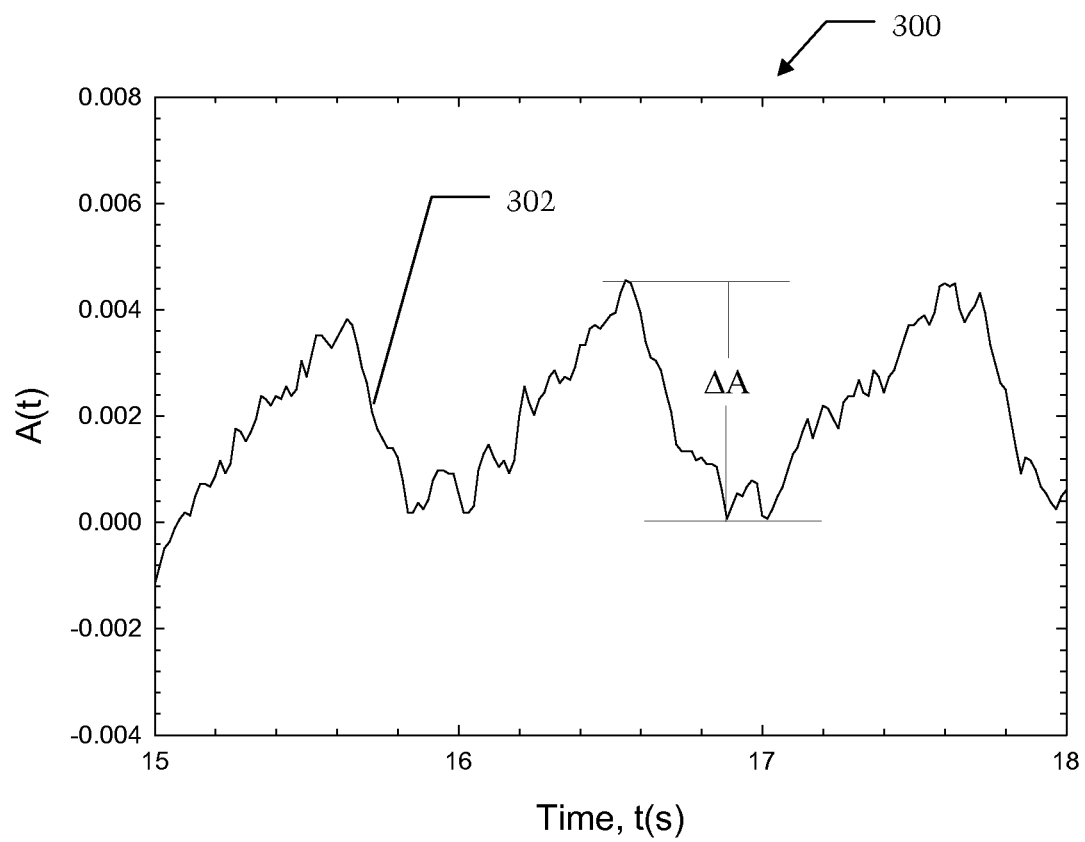


FIG. 3



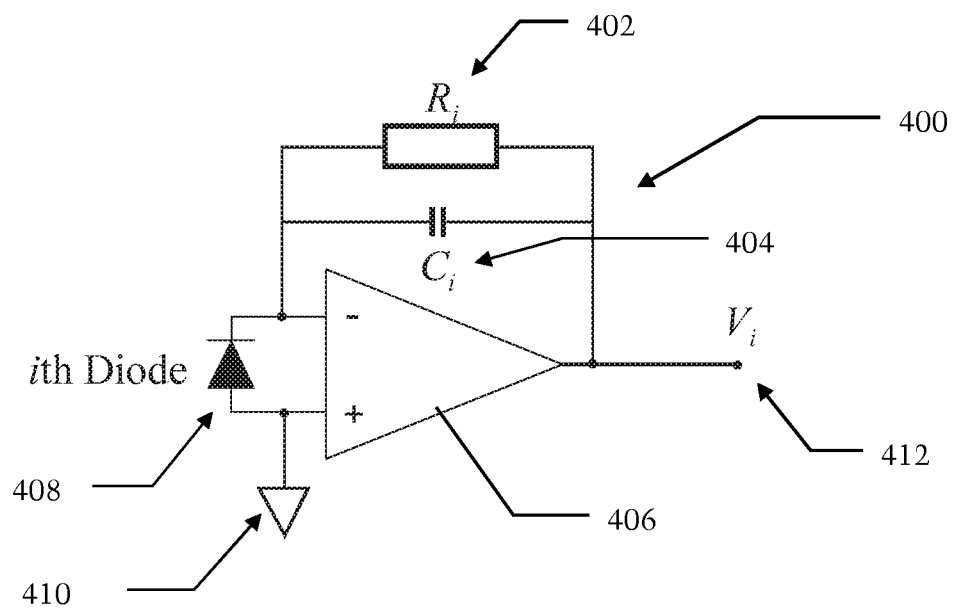


FIG. 4

# **METHOD AND SYSTEM FOR NON-INVASIVE OPTICAL BLOOD GLUCOSE DETECTION UTILIZING SPECTRAL DATA ANALYSIS**

## **CROSS-REFERENCE TO RELATED APPLICATION**

This application is a continuation application of U.S. patent application Ser. No. 13/610,387, filed Sep. 11, 2012, published as U.S. Patent Application Publication No. 20130006073, and entitled "METHOD AND SYSTEM FOR NON-INVASIVE OPTICAL BLOOD GLUCOSE DETECTION UTILIZING SPECTRAL DATA ANALYSIS," which is a divisional of prior U.S. patent application Ser. No. 12/425,535 (issued as U.S. Pat. No. 8,340,738), filed Apr. 17, 2009, which is hereby incorporated herein by reference in its entirety, and also claims priority to U.S. Provisional Patent Application Ser. No. 61/055,303, filed on May 22, 2008, the disclosure of which is incorporated herein by reference, and also claims priority to U.S. Provisional Patent Application Ser. No. 61/089,152, filed on Aug. 15, 2008, the disclosure of which is incorporated herein by reference.

## **BACKGROUND OF THE INVENTION**

Diabetes is a chronic disease that, when not controlled, over time leads to serious damage to many of the body's systems, including the nerves, blood vessels, eyes, kidneys and heart. The National Institute of Diabetes and Digestive and Kidney Diseases (NIDDK) estimates that 23.6 million people, or 7.8 percent of the population in the United States, had diabetes in 2007. Globally, the World Health Organization (WHO) estimates that more than 180 million people have diabetes, a number they expect to increase to 366 million by 2030, with 30.3 million in the United States. According to the WHO, an estimated 1.1 million people died from diabetes in 2005. They project that diabetes deaths will increase by more than 50% between 2006 and 2015 overall and by more than 80% in upper-middle income countries.

The economic burden from diabetes for individuals and society as a whole is substantial. According to the American Diabetes Association, the total annual economic cost of diabetes was estimated to be \$174 billion in the United States in 2007. This is an increase of \$42 billion since 2002. This 32% increase means the dollar amount has risen over \$8 billion more each year.

A vital element of diabetes management is the self-monitoring of blood glucose (SMBG) concentration by diabetics in the home environment. By testing blood glucose levels often, diabetics can better manage medication, diet, and exercise to maintain control and prevent the long-term negative health outcomes. In fact, the Diabetes Control and Complications Trial (DCCT), which followed 1,441 diabetics for several years, showed that those following an intensive-control program with multiple blood sugar tests each day, as compared with the standard-treatment group, had only one-fourth as many people develop diabetic eye disease, half as many develop kidney disease, one-third as many develop nerve disease, and far fewer people who already had early forms of these three complications got worse.

However, current monitoring techniques discourage regular use due to the inconvenient and painful nature of drawing blood through the skin prior to analysis, which causes many diabetics to not be as diligent as they should be for good

blood glucose control. As a result, non-invasive measurement of glucose concentration is a desirable and beneficial development for the management of diabetes. A non-invasive monitor will make testing multiple times each day pain-free and more palatable for children with diabetes. According to a study published in 2005 (J. Wagner, C. Malchoff, and G. Abbott, Diabetes Technology & Therapeutics, 7(4) 2005, 612-619), people with diabetes would perform SMBG more frequently and have improved quality of life with a non-invasive blood glucose monitoring device.

There exist a number of non-invasive approaches for blood glucose determination. One technique of non-invasive blood chemical detection involves collecting and analyzing light spectra data.

Extracting information about blood characteristics, such as glucose concentration from spectral or other data obtained from spectroscopy, is a complex problem due to the presence of components (e.g., skin, fat, muscle, bone, interstitial fluid) other than blood in the area that is being sensed. Such other components can influence these signals in such a way as to alter the reading. In particular, the resulting signal may be much larger in magnitude than the portion of the signal that corresponds to blood, and therefore limits the ability to accurately extract blood characteristics information.

The present invention is directed to overcoming one or more of the problems set forth above.

## **SUMMARY OF INVENTION**

In an aspect of the present invention, a system for detecting glucose in a biological sample is disclosed. This system includes at least one light source configured to strike a target area of a sample, at least one light detector, which includes a preamplifier having a feedback resistor, positioned to receive light from the at least one light source and to generate an output signal, having a time dependent current, which is indicative of the power of light detected, and a processor configured to receive the output signal from the at least one light detector and based on the received output signal, calculate the attenuation attributable to blood in a sample present in the target area and eliminate effect of uncertainty caused by temperature dependent detector response of the at least one light detector, and based on the calculated attenuation, determine a blood glucose level associated with a sample present in the target area.

In yet another aspect of the present invention, a method for detecting glucose in a biological sample is disclosed. The method includes utilizing at least one light source configured to strike a target area of a sample utilizing at least one light detector, which includes a preamplifier having a feedback resistor, positioned to receive light from the at least one light source and generating an output signal, having a time dependent current, which is indicative of the power of light detected, and utilizing a processor that receives the output signal from the at least one light detector and based on the received output signal, calculating the attenuation attributable to blood in a sample present in the target area and eliminating effect of uncertainty caused by temperature dependent detector response of the at least one light detector, and based on the calculated attenuation, determining a blood glucose level associated with a sample present in the target area.

These are merely some of the innumerable aspects of the present invention and should not be deemed an all-inclusive listing of the innumerable aspects associated with the present invention.

## 3

## BRIEF DESCRIPTION OF THE DRAWINGS

For a better understanding of the present invention, reference may be made to accompanying drawings, in which:

FIG. 1 illustrates a plot of a pulse wave corresponding to light absorption of arterial blood, according to exemplary embodiments;

FIG. 2 illustrates an exemplary system for obtaining spectral data;

FIG. 3 illustrates a plot of  $A(t)$ , calculated according to Equation (9) using data in FIG. 1; and

FIG. 4 is a basic illustrative schematic of a preamplifier circuit that converts photocurrent into voltage prior to digitization.

## DETAILED DESCRIPTION OF THE INVENTION

In the following detailed description, numerous exemplary specific details are set forth in order to provide a thorough understanding of the invention. However, it will be understood by those skilled in the art that the present invention may be practiced without these specific details, or with various modifications of the details. In other instances, well known methods, procedures, and components have not been described in detail so as not to obscure the present invention.

Optical spectroscopy can be used to determine the amount of light absorbed and scattered, i.e., attenuated, by a biological sample such as a human finger. By measuring the amount of light absorbed by the sample, it is possible to determine glucose, cholesterol, and hemoglobin levels of a subject non-invasively. Fingertip measurements are usually preferred because of the large concentration of capillaries in the fingertip and because of the conversion of arterial blood into venous blood that occurs in the fingertip. However, the techniques of the present invention are not limited to use with a fingertip. For example, the biological sample could be a human earlobe.

When light is transmitted through a biological sample, such as a human finger, the light is attenuated by various components of the finger including skin, muscle, bone, fat, interstitial fluid and blood. It has been observed, however, that light attenuation by a human finger exhibits a small cyclic pattern that corresponds to a heartbeat. It is believed that this cyclic pattern will be present in measurements of many other human body parts, the earlobe being one of many examples.

FIG. 1 depicts a plot 102 of a detector photocurrent,  $I_D(t)$ , that corresponds to the power of light received by a detector after the light has passed through a subject's finger. As can be seen, the detector photocurrent exhibits a cyclic pattern. This cyclic pattern is due to the subject's heartbeat, which cyclically increases and decreases the quantity of blood in the subject's capillaries (or other structures). Although the magnitude of the cyclic pattern is small in comparison to the total photocurrent generated by the detector, considerable information can be extracted from the cyclic pattern of the plot 102. For example, assuming that the person's heart rate is sixty beats per minute, the time between the start of any pulse beat and the end of that pulse beat is one second. During this one-second period, the photocurrent will have a maximum or peak reading 104 and minimum or valley reading 106. The peak reading 104 of the plot corresponds to when there is a minimum amount of blood in the capillaries, and the valley reading 106 corresponds to when there is a maximum amount of blood in the capillaries. By

## 4

using information provided by the peak and valley of the cyclic plot, the optical absorption and scattering by major finger constituents that are not in the capillaries, such as skin, fat, bones, muscle and interstitial fluids, are excluded.

These major constituents that are not in the capillaries are excluded because they are not likely to change during the time interval of one heartbeat. In other words, the light that is absorbed and scattered, i.e., attenuated, by the blood can be detected based on the peaks and valleys of the plot 102.

Assuming that the peak of the cyclic photocurrent generated by the light-sensing device is  $I_P$ , the adjacent valley of the cyclic photocurrent is  $I_V$ , and the photocurrent generated by the light-sensing device without a human finger is  $I_0$ , the transmittances corresponding to the peak and valley photocurrents can be defined as:

$$T_V = \frac{I_V}{I_0} \quad (1)$$

and

$$T_P = \frac{I_P}{I_0} \quad (2)$$

The corresponding peak and valley absorbance are:

$$A_V = \log(T_V) \quad (3)$$

and

$$A_P = \log(T_P) \quad (4)$$

The difference between  $A_V$  and  $A_P$  represents the light absorption and scattering by the blood in the finger, excluding non-blood constituents:

$$\Delta A = A_V - A_P = \log\left(\frac{I_P}{I_V}\right) \quad (5)$$

As can be seen in the algorithm shown in Equation (5),  $\Delta A$  does not depend on  $I_0$ . Thus, calculating  $\Delta A$  does not require a determination of the current generated by the light-sensing device without a sample. Monitoring the photocurrent corresponding to light power transmitted through a sample is sufficient to calculate  $\Delta A$ .

FIG. 2 depicts a simplified block diagram of an exemplary apparatus for use in an exemplary embodiment. Optical measurement system, which is generally indicated by numeral 200, uses the "pulsatile" concept for determining an amount of light absorbed and scattered solely by the blood in a sample (a human finger in this exemplary embodiment). A power source 201, such as a battery, provides power to a light source 202 that generates a plurality of light beams 204, 206, 208, 210 that are directed toward the top of the finger of a subject. In an exemplary embodiment, each of the light beams 204, 206, 208, 210 have the same wavelength or a different wavelength range, typically within 800 nm to 1600 nm. Although the optical measurement system 200 is described herein as generating four (4) light beams, it is contemplated that the light source 202 can be altered to generate fewer light beams or additional light beams in other embodiments.

A first aperture 212 ensures that the light beams 204, 206, 208, 210 strike a target area of the finger. A second aperture 214 ensures that the portion of the light beams that are transmitted through the finger strike a lens 216. Light beams 204, 206, 208, 210 are attenuated by the finger and compo-

## 5

nents of the optical measurement system 200, and, thus, attenuated light beams 218, 220, 222, 224 are emitted from the finger. The attenuated light beams 218, 220, 222, 224 strike the lens 216, and the lens 216 collects the attenuated light beams 218, 220, 222, 224 so that they impinge more efficiently on a detector block 226.

The detector block 226 is positioned directly under the lens 216 and comprises a plurality of light-sensing devices (LSD) 228, 230, 232, 234 such as an array of photodiodes. According to one aspect of the optical measurement system 200, each of the light-sensing devices 228, 230, 232, 234 detects a specific wavelength of light as defined by corresponding interference filters (IF) 236, 238, 240, 242, respectively. The interference filter transmits one or more spectral bands or lines of light, and blocks others.

Each of the light-sensing devices 228, 230, 232, 234 generates a corresponding photocurrent signal that is proportional to the power of the light received by the particular light sensing device. The photocurrent signal generated by the photodiode can be converted to another form of signal, such as an analog voltage signal or a digital signal. A processor 243 is coupled to the detector block 226 and is configured to calculate the change of photocurrent signals 244, 246, 248, 250.

According to one aspect, the processor 243 executes an algorithm such as shown in the Equation (5) to calculate the change in the light absorption ( $\Delta A$ ) solely caused by the blood in the finger. Thereafter, this quantitative calculation of light absorption of the blood can be used to determine a characteristic of the blood. For example, by comparing the calculated light absorption value to predetermined values corresponding to different glucose levels stored in a memory (not shown), a blood-glucose level of the subject can be determined.

A difficulty associated with the finger based pulsatile detection methodology is low signal-to-noise (S/N) ratio, because the amplitude of cyclic pattern (i.e., the difference between peak and valley) is typically 1%-2% of the total photocurrent generated by the light power transmitted through the finger. To obtain a S/N ratio of 100:1 in the determination of  $\Delta A$ , the baseline noise of the device being used to measure the light absorption by the finger should not be larger than  $3.0 \times 10^{-5}$  in absorbance (peak to peak), within a 10 Hz bandwidth.

However, a  $3.0 \times 10^{-5}$  absorbance (peak to peak) baseline noise level within a 10 Hz bandwidth is difficult to obtain with the low light power levels that are used by some battery-powered hand held non-invasive blood chemical measurement devices. One solution involves data averaging. To increase the S/N ratio, the averaged value of  $\Delta A$ , as defined by the Equation below, is used in further calculation to extract blood glucose concentration:

$$\bar{\Delta A} = \sum_{j=1}^M \Delta A_j \quad (6)$$

In Equation (6), M is the number of heartbeats during the time interval of the pulsatile measurement. However, this approach requires long data acquisition time, due to the fact that the rate of heartbeat is in the order of one per second. For example, 25 seconds would be needed for increasing the S/N ratio by a factor of five, and 100 seconds would be needed for increasing the S/N ratio by a factor of ten. In comparison, current commercial blood drawing glucose

## 6

meters can determine blood glucose level within 5 seconds. Furthermore, long detection time will significantly increase measurement errors due to finger movement, light power drift, device temperature change, etc. Thus, there is a need for new techniques to measure blood glucose levels quickly and accurately.

Improving S/N Ratio by Standard Deviation

The time dependent detector photocurrent output,  $I_D(t)$ , shown in FIG. 1 can be expressed as the sum of a small time dependent cyclic photocurrent  $\Delta I(t)$ , corresponding to the heartbeat, a noise current  $n(t)$ , and a constant baseline photocurrent  $I_B$ :

$$I_D(t) = I_B + \Delta I(t) + n(t) \quad (7)$$

The above Equation can be re-arranged as:

$$\frac{I_D(t)}{I_B} = 1 + \frac{\Delta I(t) + n(t)}{I_B} \quad (8)$$

Applying common logarithm to both side of the Equation (8), one obtains:

$$A(t) = \log \left[ \frac{I_D(t)}{I_B} \right] = \log \left( 1 + \frac{\Delta I(t) + n(t)}{I_B} \right) \quad (9)$$

FIG. 3, which is generally indicated by numeral 300, shows a typical  $A(t)$  plot 302, calculated according to Equation (9) using data in FIG. 1. For a pulse function  $A(t)$  shown in FIG. 3, the following key relationship exists during the time interval of one heartbeat:

$$\sigma[A(t)] = k \Delta A \quad (10)$$

in which  $\sigma[A(t)]$  is the Standard Deviation of  $A(t)$ , and k is a proportional constant.

Considering the fact that  $I_B$  is a constant and  $\sigma^2(\log I_B) = 0$ , one obtains:

$$\sigma[A(t)] = \sigma[\log I_D(t)] \quad (12)$$

Therefore, the peak-to-valley height of the  $A(t)$  plot during the time interval of one heartbeat can be obtained directly from the standard deviation of the logarithm of  $I_D(t)$ :

$$\Delta A = \frac{\sigma[A(t)]}{k} = \frac{\sigma[\log I_D(t)]}{k} \quad (13)$$

A major advantage of Equation (13) is that high S/N ratio can be achieved within short data acquisition time (approximately one second), as explained below.

In a finger based pulsatile measurement depicted by FIG. 2, the value of the sum,  $\Delta I(t) + n(t)$  is typically less than 2% of the large constant baseline photocurrent  $I_B$ . Therefore, Equation (9) can be approximated as:

$$A(t) = \log \left[ \frac{I_D(t)}{I_B} \right] \approx \frac{1}{\ln 10} \frac{\Delta I(t) + n(t)}{I_B} \quad (14)$$

Similarly, the standard deviation of  $A(t)$  can be approximated as:

$$\sigma[A(t)] \approx \frac{1}{\ln 10} \frac{\sqrt{\sigma^2[\Delta I(t)] + \sigma^2[n(t)]}}{I_B} \quad (15)$$

Equation (15) demonstrates great noise reduction power of Equation (13). For example, for a relatively high baseline noise with the ratio

$$\rho = \frac{\sigma[n(t)]}{\sigma[\log \Delta I(t)]} = 0.1 \text{ (or 10\%)},$$

the contribution to  $\sigma[A(t)]$  from the baseline noise  $n(t)$  is estimated to be less than 0.005 (or 0.5%), corresponding to an increase in S/N ratio by a factor of 20 without increasing detection time. As such, dramatic noise reduction can be obtained without increasing the data acquisition time, and a finger based pulsatile measurement can be completed within the time interval of one heartbeat (which is approximately one second), and the requirement for the S/N ratio of 100 to 1 in determination of  $\Delta A$  can be satisfied using an optical system with a baseline noise of about  $6.0 \times 10^{-4}$  absorbance (peak to peak) within a 10 Hz bandwidth. It should be pointed out that when the baseline noise of an optical system is dominated by shot noise due to low light illumination power, a noise reduction by a factor of 20 equals an increasing in light illumination power by a factor of  $20^2=400$ .

This ability of obtaining higher S/N ratio within the very short data acquisition time, e.g., less than one second, will significantly reduce detection error caused by factors such as finger movement, temperature change, and light power drift during the measurement, and therefore dramatically improve the accuracy and reproducibility of the pulsatile detection methodology.

Furthermore, the value of  $k$  does not change with wavelength, because transmitted lights at all wavelengths have identical pulse shape due to the heartbeat. As a result, the constant  $k$  will be cancelled in data normalization discussed in next section, and  $\sigma[\log I_D(t)]$  will be used in further regression analysis to establish correlation between the optical measurement and blood glucose level. This will greatly simplify the data analysis process since  $\sigma[\log I_D(t)]$  involves only two standard math functions available in most popular spreadsheet programs such as Microsoft EXCEL®. EXCEL® is a federally registered trademark of Microsoft Corporation, having a place of business at One Microsoft Way, Redmond, Wash. 98052-6399.

Normalization

At each wavelength  $\lambda_i$ , the absorption  $\Delta A(\lambda_i)$  is linked to the increase of amount of blood ( $\Delta B$ ) in the optical sensing area of the fingertip due to the heartbeat by the following Equation:

$$\Delta A(\lambda_i) = \epsilon(C, \lambda_i, T) \Delta B \quad (16)$$

in which  $\epsilon(C, \lambda_i, T)$  is the absorption/scattering coefficient of blood at wavelength  $\lambda_i$ , finger temperature  $T$ , and blood glucose concentration  $C$ . It is well understood that the variable  $\Delta B$  differs from person to person, and may even change from day to day for the same person.

The uncertainty from the variable  $\Delta B$  can be cancelled by introducing the normalization factor  $Q_i(C, T)$  at each wavelength  $\lambda_i$ , as defined by the Equation below:

$$Q_i(C, T) = \frac{\Delta A(\lambda_i)}{\sum_{i=1}^N \Delta A(\lambda_i)} = \frac{\epsilon(C, \lambda_i, T)}{\sum_{i=1}^N \epsilon(C, \lambda_i, T)}, \quad (17)$$

in which  $N$  is total number of wavelength employed. Preferably,  $N$  typically ranges from twenty to thirty.

Based on Equations (13) and (17),  $Q_i(C, T)$  is linked to the detector photocurrent at each wavelength  $\lambda_i$ ,  $I_D(\lambda_i, t)$ , by the following Equation:

$$Q_i(C, T) = \frac{\Delta A(\lambda_i)}{\sum_{i=1}^N \Delta A(\lambda_i)} = \frac{\sigma[\log I_D(\lambda_i, t)]/k}{\sum_{i=1}^N \sigma[\log I_D(\lambda_i, t)]/k} = \frac{\sigma[\log I_D(\lambda_i, t)]}{\sum_{i=1}^N \sigma[\log I_D(\lambda_i, t)]}, \quad (18)$$

As shown by Equation (18), the constant  $k$  is cancelled and  $\sigma[\log I_D(t)]$  will be used in further regression analysis to establish correlation between the optical measurement and blood glucose level. This is possible because data are taken simultaneously from all detection channels.

A correlation between optical measurement and blood glucose concentration can be established according to the following Equation:

$$C_{optical} = \sum_{i=1}^N a_i(T) Q_i(C, T) \quad (19)$$

in which  $C_{optical}$  is the blood glucose concentration predicted by the optical measurement,  $Q_i(C, T)$  is defined by Equations (17) and (18), and  $a_i(T)$  is the temperature dependent regression coefficient corresponding to wavelength  $\lambda_i$ . The values of  $a_i(T)$  can be extracted using proper statistics methods such as Partial Least Squares (PLS) regression.

Equation (19) represents ideal cases when large number of calibrations can be made at different finger temperatures. In reality, frequently only a limited number of calibrations can be made (e.g., 15 to 20), and each may be taken at a different finger temperature. Under this condition, the finger temperature can be treated as an independent variable, and the above Equation can be approximated as:

$$C_{optical} = \sum_{i=1}^N b_i Q_i(C, T) + \eta T \quad (20)$$

in which  $b_i$  is the temperature independent regression coefficient corresponding to wavelength  $\lambda_i$ , and  $\eta$  is the regression coefficient for the finger temperature. The values of  $b_i$  and that of  $\eta$  can be extracted using proper statistics methods such as Partial Least Squares (PLS) regression.

Ratio Methodology

Alternatively, the uncertainty from the variable  $\Delta B$  can be cancelled by introducing a ratio factor  $Y_{ij}$  at wavelength  $\lambda_i$ :

$$Y_{ij}(C, T) = \frac{\Delta A(\lambda_i)}{\Delta A(\lambda_j)} = \frac{\epsilon(C, \lambda_i, T)}{\epsilon(C, \lambda_j, T)} = \frac{\sigma[\log I_D(\lambda_i, t)]}{\sigma[\log I_D(\lambda_j, t)]}, \quad (21)$$

in which  $j$  can be any number from 1 to  $N$ , assuming that the device collects signal at all  $N$  wavelengths.

Similar to the normalization algorithm discussed before, a correlation between optical measurement and blood glucose level can be established according to the following Equation:

$$C_{optical} = \sum_{i \neq j}^N f_i(T) Y_{ij}(C, T) \quad (22)$$

in which  $C_{optical}$  is the blood glucose concentration predicted by the optical measurement,  $Y_{ij}(C, T)$  is defined by Equation (21), and  $f_i(T)$  is the temperature dependent regression coefficient corresponding to wavelength  $\lambda_i$ . The value of  $f_i(T)$  can be obtained using statistics methods such as Partial Least Squares (PLS) regression.

Equation (22) represents ideal cases when large number of calibration can be made at different finger temperatures. In reality, frequently only limited number of calibration can be made (e.g., 15 to 20), and each may be taken at a different finger temperature. Under this condition, the finger temperature can be treated as an independent variable, and the above Equation can be approximated as:

$$C_{optical} = \sum_{i \neq j}^N h_i Y_{ij}(C, T) + \beta T \quad (23)$$

in which  $h_i$  is the temperature independent regression coefficient corresponding to wavelength  $\lambda_i$ , and  $\beta$  is the regression coefficient for the finger temperature. The values of  $h_i$  and that of  $\beta$  can be extracted using proper statistics methods such as Partial Least Squares (PLS) regression. Elimination of the Effect of Temperature Dependent Device Response

It is well understood that the detector sensitivity of a silicon photodiode detector is a function of wavelength and temperature. For the device configuration shown in FIG. 2, which is generally indicated by numeral 200, the light power received by  $i$ th silicon diode detector, corresponding to wavelength  $\lambda_i$ , is converted into a photocurrent according to the following Equation:

$$I_D(\lambda_i, t) = P(\lambda_i, t) S_0(\lambda_i) [1 + \gamma(\lambda_i)(T_{Di}(t) - 25^\circ \text{ C.})] \quad (24)$$

In the above Equation (24),  $P(\lambda_i, t)$  is the light power received by the detector,  $S_0(\lambda_i)$  is the photosensitivity of the detector at wavelength  $\lambda_i$  and  $25^\circ \text{ C.}$ ,  $\gamma(\lambda_i)$  is the temperature coefficient of the photosensitivity at wavelength  $\lambda_i$ , and  $T_{Di}(t)$  is the temperature of  $i$ th photodiode detector. The temperature coefficient  $\gamma(\lambda_i)$  varies with the wavelength. For example, for Hamamatsu S1337 series photodiode detectors,  $\gamma(\lambda_i)$  ranges from near zero at 900 nm to over 1.0%/°C. at 1100 nm. This imposes a potential problem for the device configuration shown in FIG. 2, because it is very difficult to keep temperature of each individual diode detector constant in a handheld device used by a person with diabetes under a normal household/office environment.

This uncertainty due to the detector temperature  $T_{Di}(t)$  can be eliminated using the algorithm shown by Equations (12) and (13). Applying common logarithm on both sides of the Equation (24), one obtains:

$$\log I_D(\lambda_i, t) = \log P(\lambda_i, t) + \log S_0(\lambda_i) + \log [1 + \gamma(\lambda_i)(T_{Di}(t) - 25^\circ \text{ C.})] \quad (25)$$

Considering the fact that  $S_0(\lambda_i)$  is a constant and that detector temperature  $T_{Di}(t)$  remains almost constant during

the very short data acquisition time interval of approximately one second, one obtains:

$$\sigma[\log I_D(\lambda_i, t)] = \sigma[\log P(\lambda_i, t)] \quad (26)$$

As such, the uncertainty caused by detector temperature  $T_{Di}(t)$  is eliminated by the use of this standard deviation methodology.

Voltage Detection Mode

In the device configuration shown in FIG. 2, the photocurrent of  $i$ th photodiode detector  $I_D(\lambda_i, t)$  is typically converted into a voltage using a preamplifier before digitization. FIG. 4 shows the schematic circuit diagram of a typical preamplifier, which is generally indicated by numeral 400.

The output voltage 412 of  $i$ th preamplifier 400, in coupling with  $i$ th photodiode detector 408, can be expressed as:

$$V_i(t) = R_F I_D(\lambda_i, t) R_{0i} [1 + \chi_{xi}(T_{Ri}(t) - 25^\circ \text{ C.})] I_D(\lambda_i, t) \quad (27)$$

In the above Equation (27),  $R_{0i}$  is the resistance value of feedback resistor 402 for  $i$ th preamplifier at  $25^\circ \text{ C.}$ ,  $\chi_{xi}$  is the temperature coefficient of the resistor, and  $T_{Ri}(t)$  is the temperature of the resistor. Applying common logarithm to both side of the Equation (27), one obtains:

$$\log V_i(t) = \log R_{0i} + \log [1 + \chi_{xi}(T_{Ri}(t) - 25^\circ \text{ C.})] + \log I_D(\lambda_i, t) \quad (28)$$

Considering the fact that  $R_{0i}$  is a constant and that the resistor temperature  $T_{Ri}(t)$  does not change during the very short data acquisition time interval of approximately one second, one obtains:

$$\sigma[\log V_i(t)] = \sigma[\log I_D(\lambda_i, t)] \quad (29)$$

Substituting Equation (26) into Equation (29), one obtains:

$$\sigma[\log V_i(t)] = \sigma[\log P(\lambda_i, t)] \quad (30)$$

As such, the uncertainty caused by resistor temperature  $T_{Ri}(t)$  is eliminated.

Under the voltage detection mode, the normalization factor in Equation (18) can be expressed as:

$$Q_i(C, T) = \frac{\sigma[\log V_i(t)]}{\sum_{i=1}^N \sigma[\log V_i(t)]} \quad (31)$$

The mathematic correlation between optical measurement and blood glucose concentration can then be established according to Equation (19) or Equation (20), under corresponding calibration conditions.

Similarly, the ratio factor defined by Equation (21) can be expressed as:

$$Y_{ij}(C, T) = \frac{\sigma[\log V_i(t)]}{\sigma[\log V_j(t)]} \quad (32)$$

The mathematic correlation between optical measurement and blood glucose concentration can then be established according to Equation (22) or Equation (23), under corresponding calibration conditions. The schematic circuit diagram of a typical preamplifier 400 also includes a feedback capacitor 404, an operational amplifier 406, and a ground connection 410.

Digitization

The voltage output 412 from the preamplifier 400 is usually digitized using an analog-to-digital convertor (ADC). The digitized signal is then sent to a computer for

11

data analysis. The output of ith ADC, in communication with ith preamplifier that is in coupling with ith photodiode **408** collecting light power at wavelength  $\lambda_p$ , can be expressed by the following Equation:

$$(ADC)_i = (ADC)_{0i} + G \{ [I_D(\lambda_p, t) + I_{Dark,i}] R_i + A_{0i} \} \quad (33)$$

In the above Equation (33),  $(ADC)_{0i}$  is the offset of ith ADC, G is the nominal ADC Gain used during the detection,  $I_D(\lambda_p, t)$  is the photocurrent of ith photodiode detector,  $I_{Dark,i}$  is the dark current of ith photodiode detector,  $R_i = R_{0i} [1 + \gamma_i (T_{Ri}(t) - 25^\circ \text{C})]$  is the resistance of feedback resistor of ith preamplifier, and  $A_{0i}$  is the offset of ith preamplifier.

The contribution of the three factors,  $(ADC)_{0i}$ ,  $I_{Dark,i}$ , and  $A_{0i}$  can be removed by carrying out a dark measurement with the light source turned off right before or after the corresponding finger measurement. When the light source is turned off, the above Equation (33) becomes:

$$(ADC)_{Dark,i} = (ADC)_{0i} + G_i (I_{Dark,i} R_i + A_{0i}) \quad (34)$$

The difference between the two above Equations (33) and (34) reflects ADC output corresponding to the photocurrent:

$$\alpha(ADC)_i = (ADC)_i - (ADC)_{Dark,i} = G_i I_D(\lambda_p, t) R_i \quad (35)$$

Applying common logarithm to both side of the Equation (35), one obtains:

$$\log \Delta(ADC)_i = \log G_i + \log I_D(\lambda_p, t) + \log R_i \quad (36)$$

$G_i$  and  $R_i$  can be considered as constants as long as the time interval between the finger measurement and the dark measurement is short. As such, one obtains:

$$\sigma[\log \Delta(ADC)_i] = \sigma[\log I_D(\lambda_p, t)] \quad (37)$$

Substituting Equation (26) into Equation (37), one further obtains:

$$\sigma[\log \Delta(ADC)_i] = \sigma[\log P(\lambda_p, t)] \quad (38)$$

Based on Equation (37), the normalization factor defined by Equation (18) can be expressed as:

$$Q_i(C, T) = \frac{\sigma[\log \Delta(ADC)_i]}{\sum_{i=1}^N \sigma[\log \Delta(ADC)_i]} \quad (39)$$

The mathematic correlation between optical measurement and blood glucose concentration can then be established according to Equation (19) or (20), under corresponding calibration conditions.

Similar to normalization, the ratio factor defined by Equation (21) can be expressed as:

$$Y_{ij}(C, T) = \frac{\sigma[\log \Delta(ADC)_i]}{\sigma[\log \Delta(ADC)_j]} \quad (40)$$

The correlation between optical measurement and blood glucose concentration can then be established according to Equations (22) or (23), under corresponding calibration conditions.

Thus, there has been shown and described several embodiments of a novel invention. As is evident from the foregoing description, certain aspects of the present invention are not limited by the particular details of the examples illustrated herein, and it is therefore contemplated that other modifications and applications, or equivalents thereof, will occur to those skilled in the art. The terms "have," "having,"

12

"includes," "including," and similar terms as used in the foregoing specification are used in the sense of "optional" or "may include" and not as "required." Many changes, modifications, variations and other uses and applications of the present construction will, however, become apparent to those skilled in the art after considering the specification and the accompanying drawings. All such changes, modifications, variations and other uses and applications, which do not depart from the spirit and scope of the invention, are deemed to be covered by the invention, which is limited only by the claims that follow. It should be understood that the embodiments disclosed herein include any and all combinations of features described in any of the dependent claims.

The invention claimed is:

1. A system for detecting glucose in a biological sample, comprising:

at least one light beam emitter;

at least one light detector, wherein the light detector generates photocurrent signal; and

a light absorbance change determining algorithm implemented processor programmed to calculate a change in a light absorption caused by blood in the biological sample and configured to receive the output photocurrent signal from the at least one light detector and based on the received output photocurrent signal to determine a blood glucose level associated with the biological sample present in a target area,

wherein the light absorbance change determining algorithm implemented processor is configured to calculate a normalization factor  $Q_i(C, T)$  based on an output voltage  $V_i(t)$  of the  $i^{th}$  preamplifier as a function of time, where  $\sigma$  is standard deviation according to the equation:

$$Q_i(C, T) = \frac{\sigma[\log V_i(t)]}{\sum_{i=1}^N \sigma[\log V_i(t)]},$$

wherein T is a temperature of the biological sample and C is a concentration of blood glucose in the biological sample.

2. The system of claim 1, wherein the light absorbance change determining algorithm implemented processor is programmed to calculate the attenuance attributable to blood in the biological sample based on the received output photocurrent signal.

3. The system of claim 1, wherein the light absorbance change determining algorithm implemented processor is programmed to eliminate effect of uncertainty caused by temperature dependent detector response of the at least one light detector by calculating the standard deviation of a logarithm of the time dependent voltage signal.

4. The system of claim 1, further comprising an analog-to-digital convertor having a digitized voltage output.

5. The system of claim 1, wherein the at least one light beam emitter is configured to strike the target area of the biological sample and generates one or more light beams having a wavelength in a range between 800 nm and 1600 nm.

6. The system of claim 1, wherein the at least one light detector includes a preamplifier having a feedback resistor, positioned to receive light from the at least one light beam emitter and to generate an output photocurrent signal, having a time dependent current, which is indicative of power of light detected.

## 13

7. The system of claim 6, wherein the preamplifier has a feedback resistor, which is configured to convert the time dependent current into a time dependent voltage signal.

8. A method for detecting glucose in a biological sample, comprising:

utilizing at least one light beam emitter to generate one or more light beams to strike a target area of the biological sample;

utilizing at least one light detector, wherein the light detector generates photocurrent signal; and

receiving an output photocurrent signal from the at least one light detector with a light absorbance change determining algorithm implemented processor programmed to calculate a change in a light absorption caused by blood in the biological sample and based on the received output photocurrent signal to determine a blood glucose level associated with the biological sample present in the target area based on the calculated attenuance with the light absorbance change determining algorithm implemented processor

comprising calculating a normalization factor  $Q_i(C,T)$  based on the voltage output  $V_i(t)$  of the  $i^{th}$  preamplifier as a function of time, where  $\sigma$  is standard deviation according to the equation:

$$Q_i(C, T) = \frac{\sigma[\log V_i(t)]}{\sum_{i=1}^N \sigma[\log V_i(t)]},$$

wherein T is a temperature of the biological sample and C is a concentration of blood glucose in the biological sample.

9. The method of claim 8, wherein the one or more light beams have a wavelength in a range between 800 nm and 1600 nm.

10. The method of claim 8, further comprising a preamplifier having a feedback resistor, positioned to receive light from the at least one light beam emitter and generating an output photocurrent signal, having a time dependent current, which is indicative of power of light detected.

11. The method of claim 10, further comprising converting the time dependent current into a time dependent voltage signal.

## 14

12. The method of claim 8, further comprising calculating attenuance attributable to blood in the biological sample present in the target area by using the light absorbance change determining algorithm implemented processor.

13. The method of claim 8, further comprising utilizing an analog-to-digital convertor having a digitized voltage output.

14. A system for detecting glucose in a biological sample, comprising:

at least one light beam emitter;

at least one light detector, wherein the light detector generates photocurrent signal; and

a light absorbance change determining algorithm implemented processor programmed to calculate a change in a light absorption caused by blood in the biological sample and configured to receive the output photocurrent signal from the at least one photocurrent signal generating light detector and based on the received output photocurrent signal to determine a blood glucose level associated with the biological sample present in a target area, wherein the light absorbance change determining algorithm implemented processor is programmed to eliminate effect of uncertainty caused by temperature dependent detector response of the at least one photocurrent signal generating light detector,

wherein the light absorbance change determining algorithm implemented processor is configured to calculate a normalization factor  $Q_i(C,T)$  based on an output voltage  $V_i(t)$  of the  $i^{th}$  preamplifier as a function of time, where  $\sigma$  is standard deviation according to the equation:

$$Q_i(C, T) = \frac{\sigma[\log V_i(t)]}{\sum_{i=1}^N \sigma[\log V_i(t)]},$$

wherein T is a temperature of the biological sample and C is a concentration of blood glucose in the biological sample.

\* \* \* \* \*