

University of Missouri, St. Louis

IRL @ UMSL

---

Current (1990s)

Student Newspapers

---

4-24-1995

## Current, April 24, 1995

University of Missouri-St. Louis

Follow this and additional works at: <https://irl.umsl.edu/current1990s>

---

### Recommended Citation

University of Missouri-St. Louis, "Current, April 24, 1995" (1995). *Current (1990s)*. 175.  
<https://irl.umsl.edu/current1990s/175>

This Newspaper is brought to you for free and open access by the Student Newspapers at IRL @ UMSL. It has been accepted for inclusion in Current (1990s) by an authorized administrator of IRL @ UMSL. For more information, please contact [marvinh@umsl.edu](mailto:marvinh@umsl.edu).



# The CURRENT

## U-Vote

The University of Missouri-St. Louis will be asking your opinion on plans for a new University Center. See the Feature page (5) for more details.

### EDITORIAL

See The Current's Top 10 quotes of the year. Did you make the list?

### FEATURES

Take a look at the reviews on the Features page (7) for two of the latest flicks to hit the theaters.

### SPORTS

The Rivermen baseball team split two games in the first round of the playoffs against Washburn.

Issue 825

UNIVERSITY OF MISSOURI-ST. LOUIS

April 24, 1995

## Titlow wins election by landslide

### Zweifel, Rauscher win for SCA clean sweep; party plans to tackle 'Students as Customers'

by Jeremy Rutherford  
managing editor

In just two short years, Beth Titlow has accomplished her goal of becoming president of the Student Government Association — even though the road to the end was something of an obstacle course.

A little guidance from Tony Grey didn't hurt, either. A year ago, Grey led the Textbook Reform Committee to a huge victory for students. A debit card system was introduced, allowing students to charge their textbooks.

"I never had thought of running," Titlow said. "One day, Tony and I were sitting in the SGA office, and he told me that I had to start positioning myself to run for president."

"Of course, I thought that he was acting silly, but it made me think about it. As much as he's done for the students at this University, it means something that he believes in me."

A few dozen students believe in Titlow, too. She won with 379 votes, followed by Tom O'Keefe with 243; Tonya Hutchinson had 43 votes and a late

addition to the race, Anthony Guada, finished with 19.

"For the vote to come down that strong, to win by [that many] votes, is amazing," Titlow said. "I

**'To have the whole ticket win makes the victory even sweeter. I would have worked with whoever else won. But these are the people that I share common goals with. I wanted them to win as much as I wanted myself to win. It's like a triple victory.'**

**-Beth Titlow, SGA president-elect**

thought that if I won, it would be by 11 or 12 votes."

The election was a sweep for the Titlow ticket.

Clint Zweifel won the vice president's position with 415 votes. His opponent, Jason Peery, finished with 238 votes.

Pat Rauscher will be the new comptroller, after

winning with 354 votes. Pam White was second with 234 votes, and another late addition, Lawrence Berry, picked up 78 votes.

"To have the whole ticket win makes the victory even sweeter," Titlow said. "I would have worked with whoever else won, but these are the people that I share common goals with."

"I wanted them to win as much as I wanted myself to win. It's like a triple victory."

Titlow arrived at the UM-St. Louis campus and assumed the position of SGA Assembly chairwoman. She has been the comptroller of the SGA for the last year.

Titlow and Zweifel were members of the Transcript Fee committee that recently pressured the administration into lowering the fee from \$5 to \$3.

"I want to make sure we put a cap on the transcript," Titlow said. "We were able to lower the fee, but we can't forget about it now and let [administration] raise it again."

Titlow and Zweifel also would like to address

**see Election, page 1**



Clint Zweifel



Pat Rauscher



photo: Monica Senecal

Beth Titlow talks to students at the presidential debate last week, which was sponsored by the Residence Hall. Titlow won the election for SGA president with 379 votes.

## Some polls failed to open

by Rob Goedeker  
news editor

Students were expected to come out in record numbers at this year's Student Government Association (SGA) elections, but unfortunately, there was trouble with the polls.

The 1995 Student Government Association (SGA) presidential elections were anticipated to be the best to date.

All three candidates had strong platforms, and the diversity presented on their tickets gave a fair representation for the most, if not all, of the students on the UM-St. Louis campus.

In issue 824 of *The Current*, the locations and times of all the election polls were listed. There were to be polls at Marillac Hall (South campus), Mark Twain Building, Univer-

**'It has been a mess.'**

**-Beth Titlow, SGA president-elect**

sity Center lobby/patio, SSB lobby/patio and the Barnes Nursing College April 18 and 19. The polls were to be open from 10 a.m. to 2 p.m. and 5 to 7:30 p.m. for polls on the North and South campus. The Barnes Nursing College at the Kingshighway campus was to be opened from 2 to 8:30 p.m.

However, most of the polling places didn't open at those designated times or, they simply didn't open at all.

On the first day of the elections, polls at the SSB lobby and Mark Twain Building never opened. Then, after receiving a total of only 18

votes during the 10 a.m. to 2 p.m. time slot, the polls at Marillac Hall were shut down for the 5-7:30 p.m. time slot. The only polls that stayed open at the designated times were the ones at the U-Center lobby and Barnes Nursing College.

The next day, polls at SSB and Mark Twain did open, but they were not operational until noon, leaving them open for only two hours, half of the original time. The polls at Marillac Hall were totally shut down, while polls at the U-Center lobby and Barnes Nursing College opened as sched-

**see Polls, page 14**

## O'Keefe, Earhart file grievances

by Rob Goedeker  
news editor

Two grievances were filed by the Evening College Council and the ACTION ticket as a result of the Election Board committee's mishandling of the Student Government Association (SGA) elections.

On behalf of the 2,000 Evening College students, Julie Earhart, president of the Evening College Council, filed a grievance with the Student Court on Thursday.

In the grievance, Earhart said the elections were unfair and "50 percent of the Evening College students were denied the opportunity to participate in the democratic process of choosing a new SGA administration."

She said the polls designated for the evening students were not opened, and the polls that were opened were "away from the flow of the evening student activity and classrooms."

She said there were neither signs nor personnel posted at the closed locations to redirect students to the open polls.

Earhart charges the election committee with "know-

ingly allowing the absurdity of the election to continue, thereby contributing to its fraudulent nature."

She said the grievance is not about who won or lost the election, but rather about fairness and equality for all students. She said the message sent to the Evening College Students is clear:

"[The students at the Evening College] do not have a voice on campus, and we do not count," Earhart said. "That's the message that has been sent, and that's the message that will be heard."

She said she wants the Student Court to review the events surrounding the election, and ultimately declare the election results invalid.

Presidential candidate for the ACTION ticket Tom O'Keefe said he feels that the improper managing of the Student Government Association (SGA) election was a deliberate injustice to himself and his running mates.

"There is definitely an incompetence in Student Government and this election is evidence of that,"

**see Grievance, page 14**

## Conflicting interests



photo: Rob Goedeker

Student Jason Carman argues his point of view with Tom Carlisle, a member of Campus Ministries U.S.A. out of Ohio.

## Financial aid may be cut in GOP's plan to balance budget

by Rob Goedeker  
news editor

The new Republican majority will submit their budget proposal to congress May 15, and the Democrats speculate there could be significant cuts in financial aid programs for middle class college students all across the nation.

The Fiscal Responsibility Act,

contained in the Republican's "Contact With America," calls for a balanced budget amendment. This amendment requires spending cuts of roughly \$750 million over the next five years. Many different program will be affected, but the planned cuts in financial aid have attracted the attention of college students.

Congressional minority leader Richard Gephardt (D-Mo.) said the

Republicans are looking to eliminate or cut the funds of four major financial aid programs.

Those programs are the Subsidized Stafford Loans, Work Study Programs, Supplemental Education Opportunity Grants (SEOP), and Perkins Loans.

Gephardt fears that the Republicans might also want to interfere with the direct loan program, which Presi-

dent Bill Clinton's administration put into effect last year.

This program has allowed 104 colleges to implement a direct-loan program where students can get their loans directly from the college they attend, instead of having to deal with intermediary bands.

On the other hand, U.S. Con-

**see Cut, page 13**

## Library hours extended for finals; student support needed

by Amy Pierce  
associate news editor

The Library Hours committee of the Student Government Association (SGA) has worked a deal with Joan Rapp, director of the Thomas Jefferson Library, to extend library hours during the week of finals.

The Library Hours committee was formed by SGA to meet the needs of some concerned students. Earlier this semester, the Transcript Fee committee recently pressured the administration into lowering the fee from \$5 to \$3.

John Bracato, chairman of the Library Hours committee, said students were finding other places to

study.

"Students want a quiet place to study," Bracato said. "In the past, students went to other universities in the area to study, because their libraries were open later than ours."

Bracato said Joan Rapp has been supportive of extending the hours.

"The Library has always been open until 10:30 p.m. during finals, because during the evenings, we really are slow and do not have many students," Rapp said. "Around 9 p.m. is when most students leave."

Rapp said the library has a certain budget and focuses more on adding collections and resources than on the hours of the library.

**see Extend, page 4**



photo: Monica Senecal

Students Cynthia Krogstad and Ann Moorehead study in T.J.L.



# CLASSIFIEDS

## HELP WANTED

**HELP WANTED**-No experience necessary. Day and evening hours available. Will train as bartender/server for Bar and Grill near UMSL. 521-5309 after 3:00 p.m.

**TELEMARKETING**-hourly wage & commission, from your own home. For established local General Contractor. Call John 838-2400.

**ADVERTISE IN THE CURRENT!** It works! Faculty and students can advertise for FREE weekly. Off-campus Classified rates are \$8.00 for forty words or less. Ads should be mailed to: *The Current* Classifieds, 7940 Natural Bridge Road, 63121, Attn: Beth. Or call 516-5175.

## HELP WANTED

**EXTRA INCOME FOR '95** Earn \$500 - \$1000 weekly stuffing envelopes. For details- RUSH \$1.00 with SASE to:

**GROUP FIVE**  
57 Greentree Drive,  
Suite 307  
Dover, Del. 19901

## HELP WANTED

**HANNEGAN'S RESTAURANT** is seeking experienced, energetic, responsible people for the following positions: Day Hostess/Host Day/Evening Servers/Day Bartender. We provide a professional working environment, great pay and flexible schedules. Apply in person, 719 North Second St. Laclede's Landing or call Mark at 241-8877.

**ADVERTISE IN THE CURRENT!**  
*IT REALLY WORKS!*

## HELP WANTED

**STUDENT NEEDED** M,W,F (after 11 a.m.) and maybe weekends for yard care service. Possible Full-time position after exams. Call Brian at 830-3181.

## FOR SALE

**BALL PYTHON**-female, 1 year old. Non-aggressive, good eater. \$75 for tank, snake and supplies. Call Kelly at 644-4536.

## FOR SALE

**MACINTOSH COMPUTER** for sale. Complete system only \$499. Call Chris at 800-289-5685.

**WHY PAY RENT?** Mobile Home for sale. 2 bedroom, 1 bath. Newly remodeled. Central air. Lindbergh and Midland. \$3700 or Best Offer. Call 423-8071. Ask for Scott.

**'81 BUICK LASABRE**-Peak condition, lots of new parts, nice stereo. \$1250, OBO. 961-0097.

## SERVICES

**BELLYGRAMS**-Middle Eastern belly dance and Hawaiian-Tahitian shows for all occasions-graduation, birthday, weddings, festivals and banquets. Call Simone's 7th Veil Dance Company. (314) 984-8008. Request Jennifer (Rose Warda or Ysmena).

## MISCELLANEOUS

**VOLUNTEERS NEEDED: TOTAL** (Teen Opportunities To Achieve in Life) is searching for dedicated young adults to mentor or tutor pregnant/parenting high school teens in the Ferguson-Florissant area. Commitment requested is only one to two hours a week for a year. Complete training provided. Please call Allison for more information on how you can help: 537-8554.

**CASH FOR COLLEGE.** 900,000 Grants available. NO repayments, EVER. Quality immediately. 1 800 243 2435.

## PERSONALS

**Ace-Christy** Looking forward to a hellacious summer! Las Vegas, Alabama and Lesterville! Remember, I said NO more shakin'!  
-Ace

## Positions Available for Students



- Clerks/Data Entry
- Receptionists
- Switchboard Operators
- Secretaries
- Word Processors
- Sales
- Light Industrial

Temporary Positions  
Temp-to-Hire  
and Regular Positions

For More Information Call  
**314 • 822-2208**

1611 Des Peres Road • Suite 350  
St. Louis, MO 63131

**SNELLING®**

Personnel Services

### Student Help Needed Immediately!

Several students needed to help with opening of **UNIVERSITY MEADOWS**, the new on-campus apartment-style housing. Must be out-going and personable for this **FUN** opportunity. The positions are **ON-CAMPUS**, part-time, flexible and pay \$5.00 hr. Come join the excitement!

Call Lisa or Jennifer at 516-7500 or  
stop by 266 University Center today!

## Win Cool Prizes

Come Dunk Your Favorite Faculty or  
Student Organization Member at Mirth Day 1995

**United Parcel Service** will have a dunking booth at Mirth Day where you can take a shot at your favorite faculty member or campus personality. Also take a shot at some students from some of the organizations on campus. Free prizes for everyone.

Mirth Day • Wednesday, April 26th. 10:00 a.m.-2:00 p.m. & 4:00 p.m.- 6:00 p.m.

**FOR PART TIME JOB OPPORTUNITIES VISIT 346 WOODS HALL**

### Apartment: \$270 and up

Heat Included! 1 bedroom, 2 room efficiency, new appliances, new carpet, some furnished. 6 months or 1 year lease: \$270-\$295. Or a 2 bedroom, 1 bath apartment: \$315-\$365.

### Bermuda Heights

7744 Springdale  
Normandy

**381-8797**

# SCHOOLS' OUT WE'RE IN.



### Join the real world with the right career.

We're Hewitt Associates LLC, a global benefits consulting firm based in suburban Chicago. You'll find us listed in The 100 Best Companies To Work For In America. And due to our unparalleled growth, we're out to find the best candidates for career entry analyst opportunities in our innovative client-server environment. Formal training will be provided. If you have an outstanding GPA, an analytical mind, and the desire to get into exciting project work right away, let's find out more about each other. Send your resume including GPA (transcript preferred) to: Dave Quinn, Hewitt Associates LLC, P.O. Box 221, Lincolnshire, IL 60069. Or, fax to 708-883-0076.  
Equal Opportunity Employer.



**Hewitt Associates**

Helping Clients Around The World Improve Business Results Through People.

# EMPLOYMENT



# OPPORTUNITIES

Schnucks, "The Friendliest Stores in Town", has temporary summer employment opportunities as well as permanent part-time jobs available. We offer competitive wages and flexible hours!

**To apply, bring this ad to your nearby Schnucks store.**

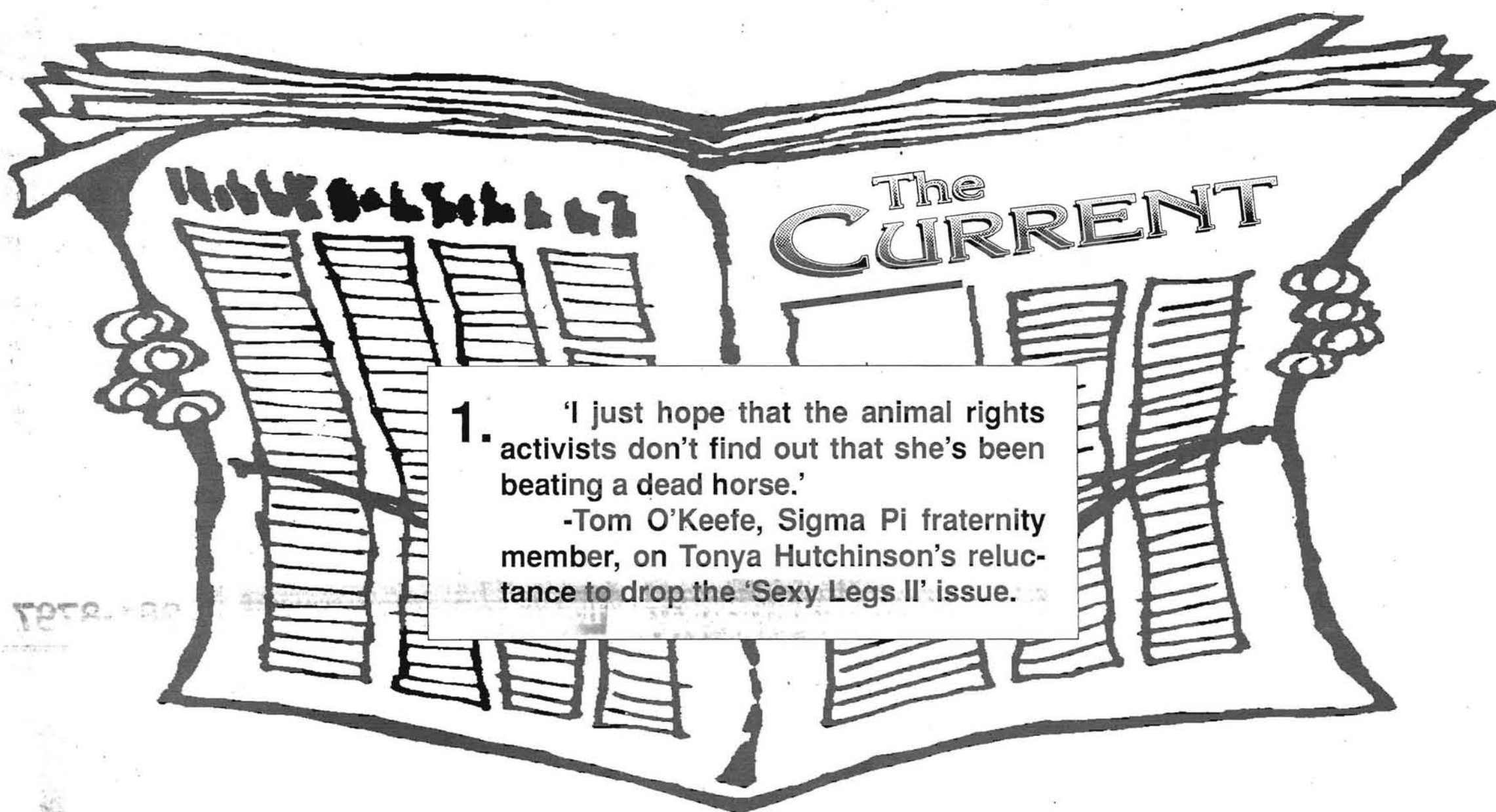
**Schnucks®**  
The Friendliest Stores in Town

Equal Opportunity Employer  
© 1995 Schnuck Markets, Inc.



## Quotes of the Year: you said it, not us

10. 'Amendment 7: that dog won't hunt.'  
-Lance LeLoup, minutes after Hancock II went down in flames.
9. 'All that I'm saying is that if there is a problem, we're going to correct it.'  
-SGA President Chris Jones, when asked about confusion over SGA's Homecoming bar tab.
8. 'It's nice to have a big lead and hold on.'  
-UM-St. Louis Basketball coach Rich Meckfessel after a 108-97 win. The Rivermen blew four double-digit leads during the season.
7. 'We will draw up a list of hidden costs at UM-St. Louis and mail it to surrounding high schools.'  
-Eric Barnhart of the Transcript Fee committee. This was before the University decided to lower the price from \$5 to \$3.
6. 'Nikki Christ is God.'  
-an unknown UM-St. Louis baseplayer.
5. 'We were all too drunk to stand up.'  
-Keven Gagnepain of the band stir, which played at the Localpalooza.
4. 'I got my tongue pierced for shock value and great oral sex. Plus it's fun to play with.'  
-Renee, a UM-St. Louis student who has her body pierced in eight places.
3. 'He saw more rubber than a skunk on a trans-Canadian highway.'  
-UM-St. Louis hockey player Glen LeCour on Rivermen's goalie Chris Perkins, who saw an infinite amount of shots in a 5-3 loss.
2. 'Tonya (Hutchinson) had an appointment with me at 10 o'clock. I had no idea she was bringing the media.'  
-Chancellor Blanche Touhill, after local television cameras appeared in her office during a sit-in.



1. 'I just hope that the animal rights activists don't find out that she's been beating a dead horse.'  
-Tom O'Keefe, Sigma Pi fraternity member, on Tonya Hutchinson's reluctance to drop the 'Sexy Legs II' issue.

## Botched election gives entire campus a headache

by Matthew J. Forsythe  
editor-in-chief

I would advise anyone who doesn't like editorial tirades to read no further. I really mean it. This editorial has enough venom in it to kill the average reader. So unless you are used to high levels of spite and bitterness, GO NO FURTHER!

I would like to think that during the last two semesters I have written editorials that have been both fair and constructive in their criticism. Due to how I was treated by certain parties last week I am not too concerned about whether this editorial is fair or

constructive.

The Student Government Association (SGA) elections finished on Wednesday evening last week. I had been in close communication with my news editor Rob Goedeker about how we were going to report on this event. Rob assured me that the election committee would fax us the results on Wednesday evening. Steve Bartok, election committee chairman, had promised us as much. I worked late Wednesday



night and was annoyed when we did not receive the fax. I didn't worry about it too much, though, because I assumed Rob would call in the morning and get the results.

When Thursday rolled around and we had still not received word about the election I started getting worried. By this time I had heard many of the reports about how certain polling places hadn't been opened up on time and how some hadn't been opened up at all. I also heard that there was a

report with the unofficial results of the election running around and that it would not be made official until student numbers had been checked to make sure no one had voted twice. When I heard this I became a little more annoyed. Shouldn't this have been done Wednesday night? Why were we still waiting for it to get done on Thursday?

To find out the answer to this and other fascinating questions, I assumed I needed to speak with the election committee chairman, Steve Bartok. I made several calls to the SGA office. Steve was no where to be found. Managing Editor Jeremy Rutherford and News Editor Rob Goedeker, knowing that the story about the election was due Thursday, went on a manhunt for Steve. The search took them to SSB where the election committee chairman had last been seen. The search netted Bartok, but unfortunately for our eager news hounds, he was still in class. Not having the time to wait for their quarry because they themselves had to get to a class, they reported their findings to their editor.

At this point I was mildly angry. But, I still had faith because I assumed Steve would return my calls. Unfortunately, I was wrong. When the sun went down Thursday, *The*

*Current* was still in the dark about the election results.

The really great thing about reporting on some events is that sometimes you have absolutely no control of what is happening with that event. On Friday morning I was caught up in the chaos of this election. We needed the official results and I was really doubting if we could get them by the end of the week.

On a tip from a friend, I called Student Services Coordinator Don McCarty who had unofficially assumed responsibility for checking the results. I told Don in the calmest voice I could manage that I needed the official results by the end of the day. I even offered to help him check the student numbers. Don promised me that he would let me know as soon as he had completed checking the results.

Much to my dismay, Don actually did call me back later in the afternoon to request some help. Putting my money where my mouth was I pulled two of my staff members (Ken Dunkin, my sports editor, and of course the tenacious Rob Goedeker) off what they were doing on what might be the last issue of the year (a sixteen pager) so they could accompany me over to student activities to do someone else's job.

By this time, I was pretty close to seething. The next two hours of checking through student numbers didn't help my mood.

The topping on the cake came after we finished checking the results. Rob and I were walking out of Student Activities when we noticed the SGA office light was on. We went over to find, low and behold, Steve Bartok. Rob was still expecting a news release from Bartok about what had happened at the elections concerning the polls not being opened on time. Rob asked him about this.

Bartok told us that the news release, which would also have the official results of the election on it (!) would have to wait till Monday.

With a little too much smugness I told Steve we already had the official results. Then I asked him to comment on what had happened with the polls during the election. He replied, "No comment."

The only comment I have for the whole situation is that it is sad when those that have taken responsibility don't fulfill their promises.

All the mistakes made by the election committee have marred what probably would have been a very good election. It is sad that the winners and the losers have to live with such a sloppy election.

## Congratulations go to SGA

Dear Editor,

I have been a member of the Student Government Association since I began my freshman year in the fall semester of 1992. The work of individuals involved in SGA for the past two years is incomparable to the suc-

cesses of the team we had this year. I am proud of the 1994-95 SGA. We worked hard and accomplished many of our tasks. We had great leadership and a lot of team work.

I'm looking forward to the future. I hope that the 1995-1996 SGA will continue to put forth the effort we

did. There is always room for improvement and change. Don't let the hard work of the 1994-1995 SGA be in vain.

Congratulations on a year well spent!!!

Signed, Student for a better UM-St. Louis

### The CURRENT

The student voice  
of UM-St. Louis

Matthew J. Forsythe  
Jeremy Rutherford  
Rob Goedeker  
Amy Pierce  
Scott Lamar  
Julie Pressman  
Ken Dunkin  
Monica Senecal  
Fernanda Lima  
Michael J. Urness  
Mitch Land  
Marty Johnson  
Julie Ball  
Beth Robinson  
Michael O'Brian  
Tricia Braucksick  
Dole Othmann  
Judith Linville

Editor-in-chief  
Managing Editor  
News Editor  
Associate News Editor  
Features Editor  
Associate Features Editor  
Sports Editor  
Photography Editor  
Associate Photography Editor  
Production Manager  
Copy Editor  
Editorial Cartoonist  
Business Director  
Associate Business Director  
Advertising Director  
Associate Advertising Director  
Circulation  
Staff Adviser

The Current is published weekly on Mondays. Advertising rates are available upon request by contacting The Current's advertising office (314) 516-5316. Space reservations for advertisements must be received by 5 p.m. the Wednesday prior to publication.

The Current, financed in part by student activity fees, is not an official publication of UM-St. Louis. The University is not responsible for The Current's content or policies.

Editorials expressed in the paper reflect the opinion of the editorial staff. Articles labeled "commentary" or "column" are the opinion of the individual writer.

All material contained in this issue is the property of The Current, and cannot be reproduced or reprinted without the expressed written consent of The Current.

Staff members also include all reporters and correspondents.



## Current newswire

## Current newswire

**Smith Receives Fulbright Award**

Herm Smith, professor of sociology, has been offered and accepted a Fulbright Award with attachments to two universities in Tokyo-Kyoritsu Women's University and Japan Women's University- from Sept. 1995 to July 1996.

**Jones Named Program Chair**

E. Terrence Jones, dean of the College of Arts and Sciences, has been named program chair for the Colleges of Arts and Sciences at Urban Universities 1996 Annual Meeting. He has also been appointed to the Council of Colleges of Arts and Sciences Long-Range Planning Committee, and he continues as director of that group's Deans and the Media Seminar.

**Business School Announces Scholarships**

The School of Business Administration is allocating \$20,000 for scholarships for transfer students from St. Louis and St. Charles community colleges. Each community college is guaranteed one scholarship for a full-time and a part-time

student. Additional scholarships for community college students will be available on a competitive basis.

**Conference on Children and Violence**

"Visions of Hope: Stopping the Violence Against Children in the Family and Community," the only major conference of its kind in the country, will be held on campus from 8 a.m. to 4 p.m. April 29. It is funded by a grant from the U.S. Department of Education and offered through Continuing Education. For information call 516-6911.

**Symphonic Band Concert April 27**

The University Symphonic Band will present a concert at 7:30 p.m. April 27 at the Florissant Civic Center Theater. The concert is free and open to the public. The band is conducted by James Richards, associate professor of music.

**Seminar to Focus on NAFTA and the Environment**

Maurice Morency, professor of earth sciences at Université du Québec à Montréal, will speak a 2 p.m. April 27 in Room 331 of the Social

Sciences and Business Building on "The North American Environment Under NAFTA." His talk is sponsored by the Center for International Studies and the International Center for Tropical Ecology.

**Gender and Ethnic Differences in Late Life Health**

Margo Hurwicz, assistant professor of anthropology, will speak at 2 p.m. April 24 on "Gender and Ethnic Differences in Late Health" as part of the Institute for Women's and Gender Studies Colloquium Series. Her talk will be given in Room 1312 of the Tower.

**Noon Series on 'Building A Biography'**

Daniel Pfaff, professor of journalism at The Pennsylvania State University, will speak in Room 229 of the J.C. Penney Building April 24 on "Opportunities and Illusions: Building A Biography."

**High Tea for Secretaries Day**

The Alumni Center will hold a high tea for Secretaries Day April 26. Space is available for the 3 p.m. seating; the cost is \$7.50 a person. Reservations are required by April 24. For

information, call 516-5722.

**Corporate Planning for the Environment and Economy**

J. William Sugar of Anheuser-Busch Cos. Inc. and a representative from Monsanto Co. will speak at 5:30 p.m. April 25 on "Corporate Planning for the Environment and Economy" at the World Trade Center St. Louis, 121 South Meramec in Clayton. The talk part of the "What's Business About the Environment" speaker series. For information, call 516-5322.

**Political Science Seminar on Private Government**

Evan McKenzie, an associate professor at the University of Illinois, Chicago, will speak on "The Rise of Residential Private Government" at 2 p.m. April 24 in Room 331 of the Social Sciences and Business Building.

**Biology Seminar April 26**

Paul Taghert of Washington University will speak at 4 p.m. April 26 on "A Molecular Genetic Analysis of Neuropeptide Signaling in Drosophila" in Room 120 of the Research Building.

## Extend from page 1

"The more hours that we are open, the more it cost to run the library," Rapp said. But we will experiment this year and hope that students will take advantage of it," Rapp said.

Rapp feels that if students know the library is open later then maybe it will make a difference.

The Thomas Jefferson Library will be open midnight May 2, 3, 4, and 7-10.

The library hours committee en-

## Election from page 1

the term "Students as Customers" of the University in the next year.

"We talk about students and their groups, but the group that we leave out is the students that aren't involved in a group," Titlow said, recently. "It's based on supply and demand. If the University doesn't supply me with my demands, I'll take my money elsewhere."

In their campaign, Titlow and Zweifel said they plan to have tables set up on campus next semester to give SGA a visible presence.

Students will be able to make suggestions to improve the communication between the SGA administration and the students.

Zweifel said he would like to

courage all student to take advantage of the longer hours. They are going to distribute flyers on campus bulletin boards, in the library, and at Mirthday.

Donna Alley, member of the committee said, "This is a great opportunity for students to study in a quiet place and if the turn out is good this semester it will happen again next semester, eventually it could become a permanent thing."

thank students for supporting him.

"Since the first of February, the last month has been very intense," Zweifel said. "The last day everything came together."

They will not take office until July 1, but Titlow said, she and current SGA president Chris Jones will work together to make the transition smooth.

"We'll probably be co-presidents for a short period," Titlow said. "I want to start planning [next] year as far as organizationally and socially."

"We have to be prepared; we have to know what's supposed to happen, and then the little surprises aren't such a problem."

**QUANTUM TECHNOLOGIES**

INCORPORATED

Unsurpassed Expertise

**Laser Printer Repair**

& Preventive Maintenance

Responsive to Your Needs

349-6600

Post Warranty: HP·Apple·QMS·Brother  
Warranty Center: Canon

University  
of Missouri  
St. Louis

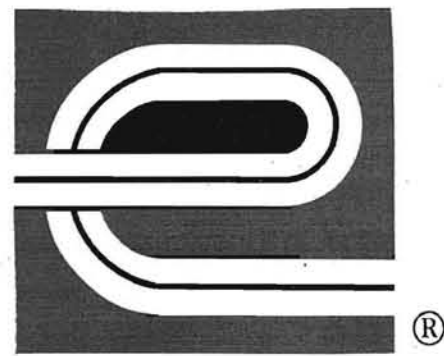
**The Current**

8001 Natural Bridge • St. Louis, MO 63121  
• (314) 516-5316 • fax (314) 516-6811



The Current is  
accepting  
applications  
for the Fall  
1995 semester.  
All positions  
are available.

To apply, drop off your application  
and resume at The Current.

**ENTERPRISE RENT-A-CAR  
SUMMER JOBS AVAILABLE**

Would you like to make \$6.75 an hour  
talking on the phone?

National Reservations has immediate full  
time and part time openings available during the  
summer months for Customer Service  
Reservationists, and we pay you to train with us.

If you can type 20 WPM and pass a basic  
aptitude test, please call 781-8232, ext. 7850 for  
dates and times of testing.

**NO EXPERIENCE NECESSARY**

An Equal Opportunity Employer

We can't tell you what  
direction to take, but we can  
sure help you get there.



Whichever direction you decide to  
take, we can help you get there in style,  
with a brand new Ford or Mercury.

If you're a graduating senior, or a graduate student,  
you can get \$400 Cash Back or a Special A.P.R.\*\*

\$400 Cash Back or  
a Special A.P.R.\*

when you buy or lease a new 1994, 1995  
or 1996 Ford or Mercury car, minivan or  
light truck. So graduate to a great deal.

See your Ford or Lincoln-Mercury dealer or  
call 1-800-321-1536 for details.



\*Special Annual Percentage Rate alternative not available on leases, Customer Option Plan or Red Carpet Option Plan. \*\*To be eligible, you must graduate with a bachelor's degree, or be enrolled in graduate school, between 1/1/93 and 9/30/95. You must purchase or lease your new vehicle between 10/1/94 and 9/30/95. Some vehicle eligibility restrictions apply.



## Just a Thought

by Don Barnes  
columnist

## And away we go

Well, kids, this is it. The last one of the year. Now, I could take you on a little stroll down ol' memory alley to look at some of the things that have happened since last September when most of us met. Or, I could be myself and just start rolling with what's on my mind. So, in an effort not to break my stride, I'm going to go out this year just like I came in—talking a mile a minute. Do you have you're safety goggles on? Good. Have any of you been over to look at the progress they're making on this University Meadows Apartment Complex thing? Man, talk about a bunch of hammer-swinging fools! I try to drive by there at least once a week to see how things are going, and believe me, things are definitely going over there. Take a few minutes if you have a chance in the next couple of weeks and take a drive by the site. Just make a left on to Natural Bridge leaving the University's main entrance and make the first right. You might dig what you see.



Something you may or may not have dug seeing last week was the active campaigning and voter turn-out for the Student Government Association (SGA) elections. Even I got out there and distributed a flier or two on Tuesday, which was a little weird for me. I'm always posting fliers for LitMag, but I can't remember when I've ever stood around approaching strangers and trying to encourage them to participate in something. Usually when I approach some one who doesn't know me they start moving in the opposite direction. (Which, by the way, I take as a direct insult towards my mother, who thinks she raised two wonderful, gentle boys. Admittedly, my brother is a little crazier than the average bear, but neither one of us ever leave the house with the intention of roughing up strangers. We just look that way sometimes.) Fortunately, no one ran from me Tuesday, though a few people did do the UMSL 10 Step right on by me.

I wasn't really out there campaigning per se. I was just doing what I could to help encourage people to participate in the election process. So, on that note, I want to congratulate every one who ran for office, whether you won or lost, and thank every one who volunteered to help out and every one who voted. Now you can bitch next year.

It would be nice to return next year to similar enthusiasm surrounding events on campus. If the stop hour is initiated, maybe the new SGA administration could schedule a meeting or two during that hour. I've only been to one SGA meeting in the six years I've attended the University, but I enjoyed that one, and I suspect I'll be dropping by them with more frequency in the upcoming year.

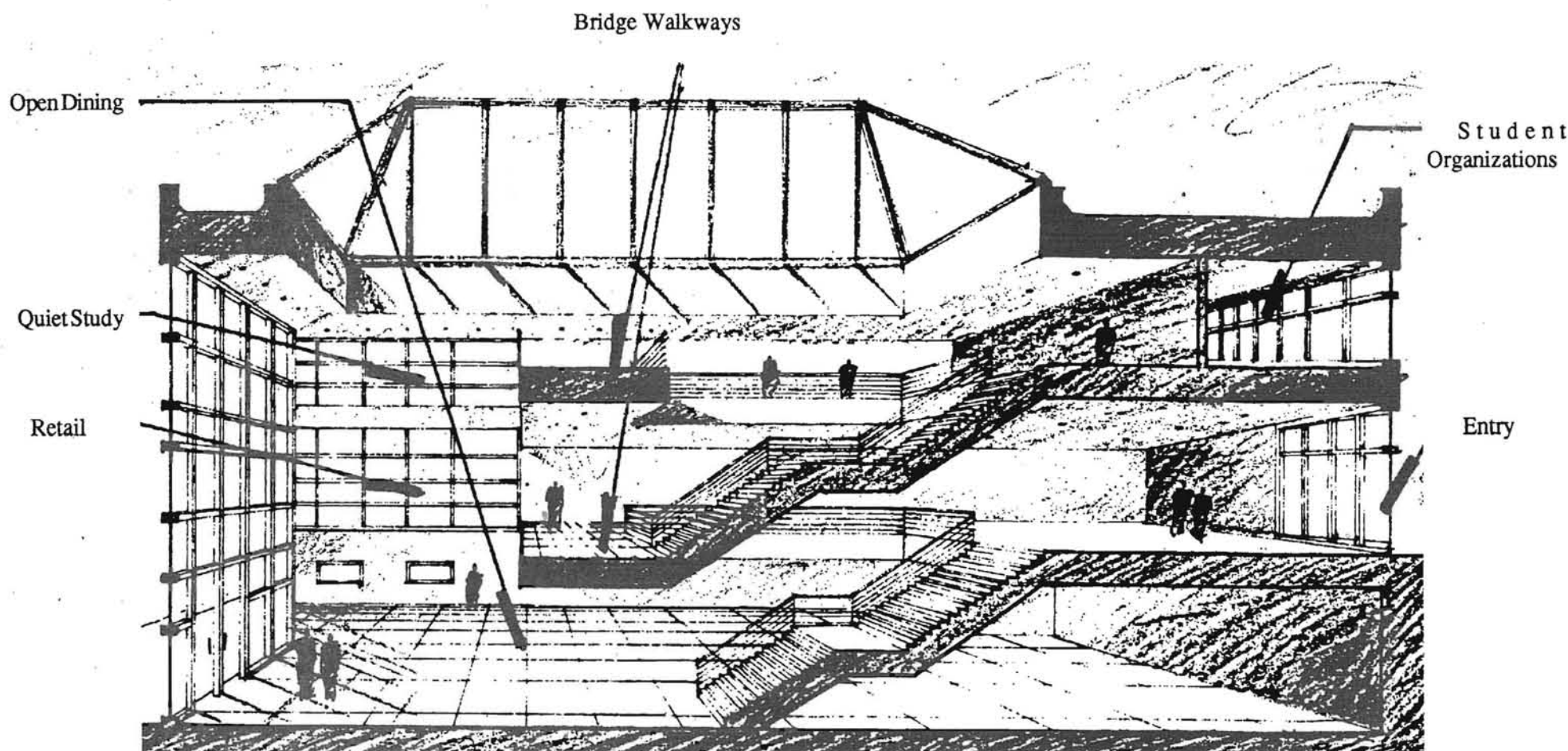
As you may have heard, Mike O'Brian has been ok'd as the editor-in-chief of *The Current* for next year. I like the sound of that. I first met Mike a few years back, when he was doing his poetry for the people down at the now ashed Wabash Triangle Cafe in the Loop, and have gotten to know him fairly well over the past couple of years. I think you'll like what he does with the newspaper.

Unfortunately, if we have a new one, the old one's gotta go. So go on there Matt Forsythe, get out of here ya maniac. We're sure gonna miss your happy ass around here. I wouldn't be writing this last column of the year if you hadn't given me the chance to write my first one. Thanks, Big Daddy, for everything. (Now get on that short story, mister. I wanna see something in LitMag next year. You can't use *The Current* as an excuse any more! By the way, I guess you'll be attending class more regularly now, Mr. Forsythe?)

Well, folks, I just hit page three on my computer, and that means I'm pushing my word limit. If I may, I'd like to leave you with an aroma.

I came out of the lower-level exit of Woods Hall the other day, and I was engulfed by one of the sweetest, most delectable fragrances I have ever encountered, coming from the trees and flowers they have blooming (What kind of a word is that? Blooming. Say it slow. It sounds weird, doesn't it. B l o o m i n g.) there in that little grove. I hung out there for a minute, taking really deep breaths, the kind

## Looking ahead towards a 'New U' center



An architect's conceptual plan of a cross section of the planned new University Center.

by Matthew J. Forsythe  
editor-in-chief

### To build or not to build

This is the question the UM-St. Louis students are going to have to answer about the new University Center on April 26 and 27.

The Current presents the following informational article about the project to help students with their decision at the polls.

### A brief history of the project

The idea that eventually grew into a master plan started in a Senate Physical Facilities committee meeting in 1986. While in committee, the planning process went through many starts and stops through the late 1980s.

In 1991, the administration began to take a more serious look at the idea. Representatives from the University traveled to 20 different institutions to assess other student centers around the nation. In addition, the University had student services offices and student activities organizations generate floor plans for future planning sessions.

In June 1994, the University hired RDG Bussard Dikis, an architectural design firm, and Brailsford Associates, a facilities planning consultant, to begin the process of putting together a master plan for the expanded University Center.

Brailsford Associates started several projects to poll the students about a new University Center. At Brailsford Associates' direction the University mailed out 3,000 surveys about the issue of improving the Center. In addition, Brailsford Associates conducted focus group meetings with the students, faculty and staff to get more in-depth information about what UM-St. Louis needed in a University Center.

The results of both of the studies showed that the students thought that an improved University Center was a priority if the University wanted to attract quality students in the future.

The Master Plan report summed up "the needs" of the students, faculty and staff in three statements: "The University Center needs additional space to meet current and future needs and to provide a one stop shopping opportunity for all of the student services. The University Center needs quality space which is open in design and similar to shopping malls in order to encourage use, promote involvement, promote

is easy for the first time user to find."

The written survey also revealed that 62 percent of those who responded are in favor of some type of fee increase to support a new building. According to the Master Plan report the level of acceptance was concentrated within the lowest and the highest fee options reflecting both a strong desire for an improved University Center and willingness to pay for quality.

In addition to the surveys and focus groups the trends survey showed that other Universities were developing student centers that are mall-like, one stop shops with user-friendly facilities. It also revealed that most of the student centers in the nation are funded partially or entirely by student fees.

### A new University Center

The Planning Committee for the University Center Expansion comprised of administrators, students and consultants took the data from the assessed needs and started to put together different plans that would meet these needs.

On Aug. 24, 1994, the different possibilities for a new University Center were presented to Chancellor Blanche Touhill. In this particular meeting with the Planning Committee, 11 different plans were evaluated including plans for a new building. After looking at the different plans, the Chancellor gave approval to the Planning Committee to explore all the possibilities, including a new structure.

After reviewing the data it became obvious to the planning committee that a brand new building was more feasible. The Master Plan report cited the following reasons:

### The present University Center

In issue 798 of *The Current*, architectural planner Ken Bussard of RDG Bussard Dikis said, "U-Center will be a real problem to retool. I don't know how expanding U-Center will help us reach the product that the survey indicates we need."

see New U, page 8

## Program Spaces and Activities

\* (In Square Feet)

Student Fee's Supported Total Space.....64,411\*

Student Organization Offices  
Conference and Meeting Room  
Social Lounge  
Quiet Study Area  
Computer Laboratory  
Information Center

Cost: \$10.1 Million

Revenue Generated Space.....58,000\*

Food Service  
Bookstore  
Games Area  
Speculative Retail

Cost: \$8.5 Million

State Supported Space.....42,857\*

International Students  
Student Health  
Women's Center  
Disabled Students  
Career Placement and Counseling  
Administrative Services  
Academic Advisory Service  
General Storage/Repair

Cost: \$7.7 Million

Totals.....Cost: \$26.3 Million.....165,269\*

source: RDG Bussard Dikis

social interaction, and to truly create a hub of student activity for campus. The University needs convenient space that is located as part of students day to day flow on campus and that

## Current Chatter

by Monica Senecal  
photography editor

## What are your plans for this summer?



I want to see the Cardinals win the World Series and I'd like to graduate.

Jeff Butler  
Finance  
Senior



I want to have a life-changing summer.

Gabe Wing  
Economics  
Senior



I'm going to Guatemala to start my preliminary thesis research.

Claire Dallies  
Biology  
Graduate Student



First, I'm going to work and I plan to travel to Arkansas, Mississippi and Michigan.

Kenya Mayhew  
History  
Junior

see Blooming, page 8



# RAT'S REVIEWS

## Acoustic/Children's Kathy Kallick—"Use a Napkin (NOT your MOM)"

Kathy Kallick along with some of the West Coast's finest acoustic musicians has produced the recording, "Use a Napkin (NOT your MOM)" that is sure to become a favorite of listeners of all ages.

The title track, as you might imagine, finds a mother and child in a variety of situations where a child is faced with the decision of using inanimate objects like napkins, ladders etc. or Mom.

The second track, "The Crawdad Song" is a traditionally-flavored bluegrass song. It also features fine acoustic performances by Kevin Wimmer; fiddle, Sally Van Meter; dobro, Sandy Rothman; banjo and John Reischman; mandolin.

"Bye Bye Kitty Zydeco" has a true Cajun flavor that even the Ragin' Cajun would be proud of. Feisty fiddle and accordion playing, I guarantee! And, no, it's not a song that promotes cruelty to the little beasts.

Other highlights include the swing version of the 1949 Buddy Johnson tune, "Did You See Jackie Robinson Hit That Ball?" With the

backing vocals of Tony Marcus, Sylvia Herold and Piper Heisig, this one sounded something like a hip Andrews Sisters song.

I also enjoyed "Smelly Feet," "My Family," "C-H-I-C-K-E-N," and the somewhat surprising though tastefully done "Amelia Earhart's Last Flight." This song and its accompanying commentary provide children with a history lesson and a interesting look at the famous aviatrix.

No child's music library would be complete without Kallick's new "Use a Napkin (NOT your MOM)."

--Michael J. Urness

## Pop/rock Sean Kelly—"Light House Rocket"

Fans of The Samples may have worried about the future of the band when they heard that guitarist and lead singer Sean Kelly was releasing a solo album, but they needn't fear. Unlike the solo efforts of say the members of the Beatles, any song on the new "Light House Rocket," with maybe the exception of "Amazing Grace," could pass for The Samples.

The 9 tracks, which run just over 33 minutes, were laid down last summer during the band's first extended

break from touring in over seven years.

"We had just finished recording 'Autopilot,' which cost about \$50,000," Kelly says. "Then these songs all came to me at once, and they needed an outlet."

Using a home set-up, a local studio and what he claims was just \$1,000 Kelly put the project together in just a week.

Joining him on the album are Tom Robertson, drums; Mike Stand, French horns; Amp Lafire, bass; Cassy O, piano; Mike Rafone, bells and Betsy Shaw, vocals on "Amazing Grace"

"On the Loosing End of Distance," the lead-off track, is about the loss of a loved one. It features what sounds like programmed drum machines and Kelly's distinctive vocals.

"Me Myself and I" is a moving introspection of married life and aging and dying. It features the hauntingly beautiful muted horn playing of Stand as well as great guitar work by Kelly.

Another impressive track "She's an Exception," is a bouncy song about a special woman. This one features what sounds like an accordion but no accordion player is listed in the credits of this song.

## Rhythm & Blues Tracy Nelson—"I Feel So Good"

Tracy Nelson, former member of the legendary Mother Earth band has recently released "I Feel So Good," with the help of Al Kooper, Mike Henderson, Delbert McClinton, the Memphis Horns (Andrew Love and Wayne Jackson), and others.

Nelson recorded her first album in

1965 while still a student in her hometown of Madison, Wis. Unlike many other white blues artists, Nelson went to Chicago on the weekends and learned the blues firsthand from the blues giants of that time.

As she did on her 1993 Rounder debut "In The Here And Now," Nelson stays true to her R&B roots. Now entering her fourth decade of playing professionally, she's joined the small circle of persons to succeed in spanning the country and

blues gap. In 1974, Nelson's duet with country legend Willie Nelson (no relation) led to a Grammy nomination. In 1994, twenty years later, she was a finalist at the W.C. Handy blues awards in Memphis, Tenn.

On "I Feel So Good" Nelson's version of Willie Dixon's "Don't Go No Further" leaves a resounding impression that this is no ordinary R&B woman.

On Bessie Smith's "Send Me To The 'Lectric Chair" Nelson shows

## Truck Stop Love How I Spent My Summer Vacation Rock/Alternative

The new release by Truck Stop Love brings a great style to the mainstream, a band that plays all types of music.

TSL mixed country, rock, and punk into one big ball and came up 'How I Spent My Summer Vacation.' This is their first full length release for Backyard/Scotti Brothers record and it is a decent disc. The key word is decent. While some songs are good and listenable most don't have much ear appeal.

The best song on the disc is the one that was hidden. The 13th track on the disc 'Sad Luck Girl,' is a mellow acoustic duet that sounds great. 'Walton's Mountain' is a great tune that is made great by the banjos and drums that are played in the background. The song is a tribute to the old television show 'The Waltons.'

Whether intended or not "Light House Rocket" is pure Samples from start to finish, and no fan should be disappointed.

--Michael J. Urness



Truck Stop Love

The lead singer Matt Mozior talks about the fun he had growing up on the mountain.

The disc is a very decent one that could get air play on The Point and possibly other channels. They have a very garage band sound that sounds

as if it were recorded live. Given enough time this band grows on you, it take a while to appreciate their style. For many of us there isn't enough time to wait. Somewhat recommended is you have time to listen to it many times.

--Ken Dunkin

## Singer/Songwriter Carrie Newcomer—"The Bird Or The Wing"

Carrie Newcomer, the Indiana native and onetime lead vocalist of the folk trio Stone Soup, has recently released "The Bird Or The Wing," a follow-up to her acclaimed 1994 Philo release "An Angel At My Shoulder."

Newcomer has worked with such celebrated artists as Pierce Pettis, Cheryl Wheeler, The Story, Richard Thompson, David Lindley and Jonathan Edwards, and among others, she's played such celebrated venues as the Birchmere, the Bottom Line and Carnegie Hall.

In addition to music her bio sheet says Newcomer has worked as an artist, teacher, truckstop waitress, factory worker and even as a volunteer in Costa Rica. These varied experiences coupled with her status as a single mother, should provide Newcomer with new song ideas for years to come.

On her new release Newcomer

explores such universal themes as religion in "Holy Ground" and love in "Tenderly With You," "The Yes Of Yes" and "The Love Letter."

"Wisdom Watching," Newcomer says in the liner notes, was written following the senseless killing of a doctor outside an abortion clinic. In addition to powerful lyrics, this song features the swirling guitars of both Newcomer and Robert Meitus, the mournful fiddle playing of Chris Wagoner and the intricate rhythms provided by percussionist Jamey Reid and drummer Dan Vonnegut.

"I'm Not Going To Let You Break My Heart" is the song of a woman who has become self reliant and who knows what is ultimately good for her. The familiarity of this as well as every other song, along with the incredible instrumental lineup make this an incredible effort.

Newcomer's voice is as warm and comfortable as flannel PJs on a cold December night. Try her new "The Bird Or The Wing" on for size.

--Michael J. Urness

## NOW HIRING AMOCO

Offers  
**90% Tuition  
Reimbursement**

We are looking for responsible people to provide friendly customer service at several retail stations in the St. Louis area. Sixteen hours a week and one month of employment qualify most majors and graduate degrees for 90% reimbursement of tuition, \$2500/yr. max.

In addition to tuition assistance, AMOCO offers:

HEALTH CARE BENEFITS  
ADVANCEMENT POTENTIAL  
LIFE INSURANCE

FLEXIBLE SCHEDULING  
PAID HOLIDAYS  
PAID VACATIONS

BONUS OPPORTUNITY

Apply in person at one of the following stores:

1500 Route K  
O'Fallon, MO

5311 M.L.K.  
St. Louis, MO

1520 Kisker Rd.  
St. Peters, MO

10633 New Halls Ferry  
Ferguson, MO

3735 Harry S. Truman  
St. Charles, MO

4403 N. Hanley Rd.  
Berkley, MO

1340 So. 5th St.  
St. Charles, MO

10500 Natural Bridge  
Edmundson, MO

**HOTLINE: 867-3379**

## Beware the Children

## VILLAGE OF THE DAMNED

UNIVERSAL PICTURES PRESENTS AN ALPHAVILLE PRODUCTION JOHN CARPENTER'S "VILLAGE OF THE DAMNED" CHRISTOPHER REEVE KIRSTIE ALLEY LINDA KOZLOWSKI MICHAEL PARE JOHN CARPENTER & DAVE DAVIES UNWRITTEN BY DAVID CHACKLER EDITED BY EDWARD A. WARSCHILKA PRODUCED BY RODGER MAUS DIRECTED BY GARY B. KIBBE EXECUTIVE PRODUCERS JAMES JACKS SEAN DANIEL PRODUCED BY TED VERNON SHEP GORDON ANDRE BLAY EXECUTED BY DAVID HIMMELSTEIN PRODUCED BY MICHAEL PREGER SANDY KING DIRECTED BY JOHN CARPENTER SPECIAL VISUAL EFFECTS BY UNIVERSAL PICTURES A UNIVERSAL PICTURE

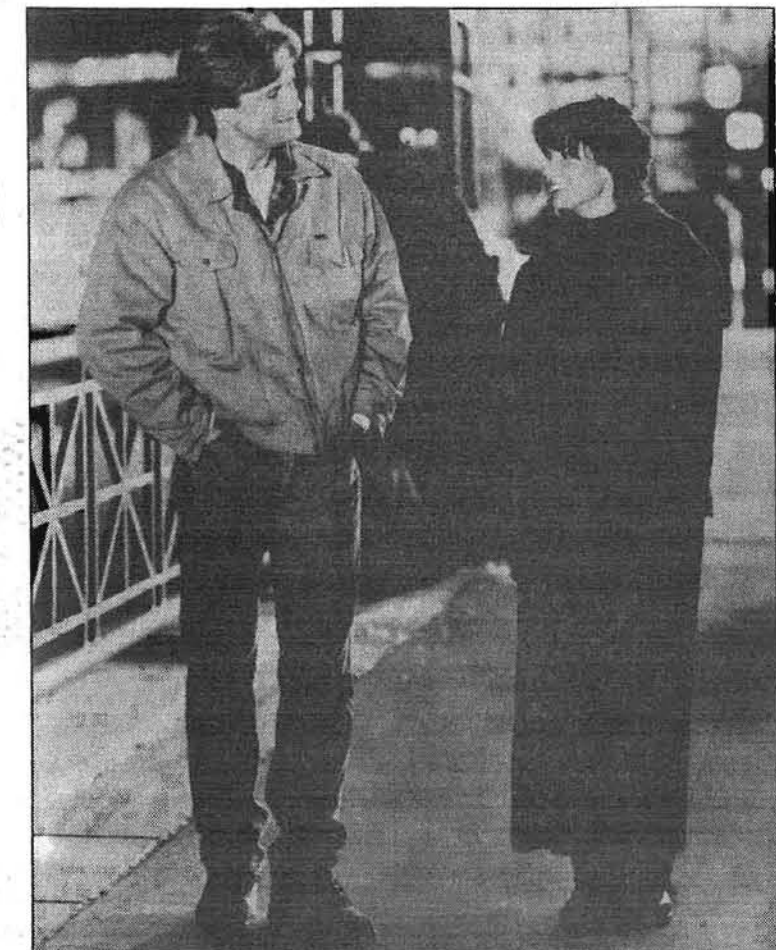
Opens April 28th at a theatre near you



MOVIE REVIEWS

Looking for love in all the wrong places

Sandra Bullock hopes to find love in a lawyer at a tollbooth



Bill Pullman and Sandra Bullock in 'While You Were Sleeping'

by Scott Lamar  
features editor

"While you were sleeping" is a feel-good movie about a woman (Sandra Bullock) who becomes engaged to the man of her dreams (Peter Gallagher) and is warmly accepted into his family—all while he lays unconscious in the hospital. The plot is extremely original and has all of the qualities of a good fairy tale. It has an emotional effect along the same magnitude of "Sleepless in Seattle."

Bullock plays Lucy, a lonely toll booth operator who is infatuated with the good-looking lawyer whom she sees everyday but is too shy to say anything. On one Christmas morning, however, she observed her

heartthrob, Peter, getting pushed down onto the tracks, she comes to the rescue a millisecond before he is ripped apart by an oncoming train.

At the hospital, she whispers to her herself that she is going to marry him, which the nurse hears and informs his family of.

The next thing you know, she's sipping eggnog and opening gifts from her soon-to-be in-laws.

Peter's brother, Jack (Bill Pullman), is the only person who questions whether Lucy is really Peter's fiancée. Jack interrogates Lucy incessantly. He finally gives in when Lucy is able to tell him a secret that no one else would know—Peter only has one testicle.

Lucy develops a tight bond with Peter's family and soon falls in love

with Jack.

Meanwhile, Peter is still unconscious.

Jack and Lucy spend a lot of time together and their romance begins to blossom. Lucy is taken in by their slow walks and intimate conversation and the audience will eagerly await the conclusion which is now clear.

We can't forget about Peter who has finally woken up. He recognizes everyone except for, of course, Lucy. This would be a prime moment for her to straighten everything out until amnesia is used as an excuse.

Bullock, as she was in Speed and Demolition Man, is very lovable and innocent. Lucy is no different.

Jack is similar in that he can do no wrong. Pullman has a Columbo-like

demeanor that radiates from his monotone voice and the whimsical look in his eye.

Peter who sees how charming Lucy is, thinks the idea of getting married is appealing. He apparently is an ass who doesn't really take his relationships seriously and believes that he can change his ways.

Lucy fails to say anything until right before the nuptials. It is then in a touching soliloquy that she tells them about how great having a family is and that the love of her life is actually Jack.

If your looking for a movie to take a date on, this is your ticket. It will be sure to keep a smile on your face the whole way through. It's a great story that is worth a look.

'Diaries' tells of promising teenager's downward spiral of addiction

by Scott Lamar  
features editor

"The Basketball Diaries" lends credence the the phrase, "idle hands are the devil's plaything, I mean workshop."

This movie is based on the book of the same name by Jim Carroll. Jim's bad decisions during his adolescence throw him into downward spiral through life.

Carroll (Leonardo DiCaprio) is a gifted young basketball star playing for a Catholic boys school. Carroll and three friends, Pedro, Neutron and Mike would cause mischief around town whenever they weren't dominating their opponents on the court.

For Jim, the only stable authority figure for him is his mother. But her guidance can't compensate for the negative influence the shadier people of the streets and an unruly peer group have on him.

I felt that DiCaprio ("What's Eating Gilbert Grape") did a superlative job in the role of Jim. The Academy Award-winning actor shows how versatile he is. DiCaprio was com-

plete as a kid who learns the bad habits of the people on the streets of Manhattan.

It is obvious that ex-rapper 'Marky' Mark (Wahlberg) has made a wise career move in moving to the screen. He did an excellent job as Jim's fellow street thug/drug fiend. Wahlberg is an extremely talented actor who landed the role with a quick, cold reading.

Mickey, along with Neutron and Pedro tumble from a blossoming basketball career into a life of crime to support their drug addiction. He has no positive influence in his life to steer him in the right direction, which ultimately causes him to end up in prison.

For Jim, he has a friend (Ernie Hudson) who understands what it is like to be a junkhead and tries valiantly to cleanse him of the toxins that flow through his veins, but it is to no avail. The only thing on Jim's side is her love and desire for him to get off the streets.

What the movie emphasizes is the trail of agony drugs take people on. What it lacks is a clearer segue way into his life after it is

drug free.

Jim's personal journey through hell was riveting and emotional, but we are jerked forward into his new life without any knowledge of how he gets his life back on track.

Director Scott Kalvert gave the audience a magnified look at the alleys where junkies sleep and shoot up in. He gave us a look through Jim's blood shot eyes that are weighed down from another sleepless night of searching for money to purchase his next fix.

The movie was a sad, but true portrayal of the adverse effects an uncaring, perverse society can have on a youth with no social structures to neutralize the bad elements.

The boys seek out pleasure with no fear of being punished. The only sanctions against their delinquent behavior comes from the priest's corporal punishment in school, which they mock. The only real punishment they receive is self inflicted through their drug abuse.



Patrick McGaw, James Madlo, Mark Wahlberg and Leonardo DiCaprio in 'The Basketball Diaries'

Program Board Proudly Presents

mirthday

1995

University

FREE

• ADMISSION

• MUSIC

• STUFF FROM SPONSORS

• GAMES

• RIDES

WEDNESDAY, APRIL 26

11AM - 2 PM AND 4 PM - 6PM

SPECIAL GUEST: Peter Himmelman from Epic Records

Don't Miss

GospelFest 1995

"O'Give Thanks"

Friday, April 28

7:00 p.m.

J.C. Penney Auditorium

Integra GS-R Sports Coupe

WHO SAYS YOUR DEGREE WON'T OPEN ANY DOORS?

BEFORE YOU GET too depressed about what your college diploma is really worth, check out the box below. It outlines our special deal for soon-to-be graduates, or graduates who have been out of school less than a year. See that? You thought you'd be driving around in some used rust' bucket. But now you can drive an Acura Integra GS-R, with a 170-horsepower VTEC engine, power moonroof, air conditioning, and best of all, a name. Of course we know you'd prefer a vice presidency in our company. But this should do for now. SOME THINGS ARE WORTH THE PRICE.

THE ACURA INTEGRA GRADUATE PROGRAM

LOW DOWN PAYMENT

Flexible payment schedule. Easy to qualify.

MANCHESTER

Dave Mungenast St. Louis Acura 13720 Manchester Road 314-822-2872

ST. LOUIS

Frank Leta Acura 11777 Tesson Ferry Road 314-849-4444

\*See your participating Acura dealer for details. The Acura Integra Graduate Program is available to purchasers by AHFC. ©1995 Acura Division of American Honda Motor Co., Inc. Acura and Integra are registered trademarks of Honda Motor Co., Ltd. VTEC is a trademark of Honda Motor Co., Ltd. Make an intelligent decision. Buckle up.



New U from page 5

The cost of expanding and retooling the present University Center. The University projected the cost of building a brand new structure at \$26.3 million. The renovation of the present University Center was estimated at about \$22 million without factoring in the \$4.3 million that the University would have to pay to buy the J.C. Penney Building from Continuing Education and Outreach. With this in mind, building fresh became even more attractive.

### The future of the University

The Master Plan for the whole University calls for continued growth of the campus away from the present University Center. The Planning Committee felt it would not be appropriate for the University to rebuild the present University Center if it was not in a position to be a hub of activity on the campus.

After this decision was made the Planning Committee started on nar-

rowing the number of plans down. Eventually a site, flush against the south side of parking lot "E," and a conceptual plan for the structure and its floor plans was settled upon. The Planning Committee also submitted a breakdown of the square footage of each section of the building (see chart page 5).

### The Price Tag

The entire project is estimated to cost \$26.3 million. The space that

student fees will fund including student organization offices, conference and meeting rooms, a social lounge, quiet study area, computer labs, and an information center will cost approximately \$10.1 million. Food service, the Bookstore, a games area and possible retail space will make up the revenue generating space which will cost \$8.5 million. The third division of space which will include the International Students area, the Student Health Center, the Women's Center, the Disabled Students Center, Career

Placement, Counseling, Administrative Services and the Academic Advisory Service will be paid for by the University and cost \$7.7 million.

The University might receive a little help from the State if funding which can be used for this project is approved by the Missouri Legislature this May. If these funds are not available, the University has the option of financing the project with bonds. The new student fee will be \$6.05 per credit hour with a 12 hour cap. In a typical year (two semesters)

a student taking 12 hours per semester would pay \$145.20. Because of the 12 hour cap \$72.60 is the maximum a student would pay per semester. The fee would not start until the building is open, which is tentatively scheduled for January 1998.

### The student decision: Yes or no.

On April 26 and 27 the Chancellor will be asking for your advice. The referendum is non-binding but as Deputy to the Chancellor Donald Driemeier said in issue 802 of *The Current*, "[If the students voted this down] it would be a very powerful piece of information. We would probably need to rethink the project. The student referendum is a way for the students to let the administration know if the information they have gathered is accurate."

Is it worth it? Cast your vote this week and let the administration know.

### Blooming from page 5

that pressure you to close your eyes, until a buddy of mine came strolling by. I asked her to join me, which she did, and we stood there, enjoying the sweet smells, smiling just because.

Have a good summer folks. I'll talk to you in the fall if I survive all the float trips.

# College Life: A Few Things To Know

**KNOW:** Which off-campus bookstore will buy back your used \$45 textbooks for more than 25¢ each.



**KNOW:** Which "30-minutes-or-it's-free" pizza place always takes exactly 31 minutes.



**KNOW:** which evil, quarter-eating laundromat machines to avoid.



**KNOW THE CODE,<sup>SM</sup>**  
IT ALWAYS COSTS LESS THAN 1-800-COLLECT.<sup>SM</sup>



Hey, on college campuses those "in the know" are the ones who rule. And it's not just about being smart in the classroom, it's about being wise with your wallet as well. So if you want a great low price on a collect call, just dial 1 800-CALL-ATT. It always costs less than 1-800-COLLECT. *Always.*

There are lots of tricky things for you to learn at college, but here's something that's easy: KNOW THE CODE, and save the person on the other end some serious money. You'll be glad you did.

dial 1 8 0 0  
C A L L  
A T T<sup>SM</sup>

ALWAYS COSTS LESS  
THAN 1-800-COLLECT.\*

AT&T. Your True Voice.<sup>®</sup>

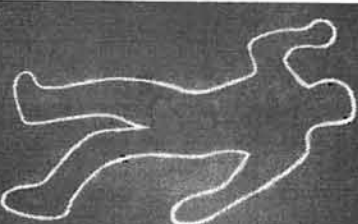


\*Promotions excluded. 1-800-COLLECT<sup>SM</sup> is a service mark of MCI.

© 1995 AT&T

**FREE**  
CALL WHEN YOU PLAN YOUR NEXT  
**TRIP!**  
INTRODUCING:  
1-800-2COUNCIL  
1-800-226-8624  
**Council Travel**  
The Lowest Student Fares

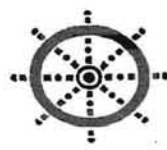
**WHEN YOU RIDE  
DRUNK,  
ONE MORE FOR  
THE ROAD  
CAN HAVE AN  
ENTIRELY  
DIFFERENT  
MEANING.**



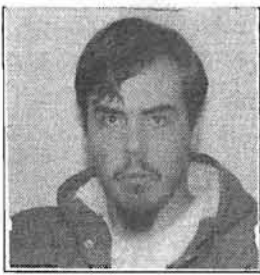
Alcohol quickly affects your judgment, balance, and coordination. Don't drink and ride. Or your last drink might be your last drink.  
**MOTORCYCLE SAFETY FOUNDATION**

American Heart Association  
Fighting Heart Disease and Stroke  
**Research gave him a future**  
  
Support Research  
©1995, American Heart Association





## Off the wall



by Ken Dunkin  
sports editor

Well folks, the semester is coming to an end and with it ends another semester for UM-St. Louis athletics. It's been a fine year for all UM-St. Louis teams, some more than others.

I'll start off this column by naming my choices for athlete of the year at UM-St. Louis. They were tough choices to make, as there were many athletes who had great seasons. Todd Rick and Jenni Burton, both soccer players, came out the clear winners as they led their teams in almost all offensive categories.

Rick had a phenomenal season for the Rivermen. He racked up 17 goals, tying a school record, and he had seven assists for a total of 41 points, the second highest single-season total in school history. Rick was named first team All-Conference and Most Valuable Player in the Mid-America Intercollegiate Athletics Association. He was also named to the Division II, All-Midwest team. For his final award, Rick was put on the Division II, All-America team.

Those who saw Rick play last season will vouch for his awards, he earned every one. His every move seemed well planned, and his shots were, for the most part, accurate and powerful. The great thing is he will be back next season blasting his cannon shots past helpless goalies.

Burton didn't get the recognition she deserved. She was named Division II, All-Mideast region second team. A fine award indeed, but she deserved first team. The women that made first team must be damn good to have won out over her.

Burton is the Riverwomen offense. She scored a school record 22 goals and had four assists. She had 48 points.

In only two years at UM-St. Louis, Burton is third on the all-time goal-scoring list with 42 career goals. She will have no problem breaking that mark this season, barring an injury.

The Riverwomen rely heavily on Burton to score goals, and she does that with great consistency. She also has a good shot that is rarely off target. Next season could be Burton's finest in a Riverwomen uniform. Watch out opposing goalies, she rarely misses.

Like I said earlier, several athletes were very close in consideration, Rick's teammate Mark Lynn, women's basketball 3-point artist, Laura Satterfield; the baseball team's trio of hitters Dan Chinnichi, Casey Hensley, and Josh Banks; and softball strikeout queen Jill Stockdale. Each contributed heavily to their teams and improved the level of play several notches.

The best of luck to each athlete for a great summer.

Josh Banks the Rivermen baseball centerfielder is currently on a hot streak. He is hitting over .400 on the season and over .500 in his last 14 games. The amazing thing is

see Dunkin, page 10

# One game will determine Rivermen's fate

by Ken Dunkin  
sports editor

The UM-St. Louis Rivermen baseball split a conference series against Washburn last weekend, the third and final game was rained out. The Rivermen started the series off with a 11-3 loss. Trevor Wolfe started the game for the Rivermen. He pitched seven innings allowing eight earned runs on 10 hits.

"It was one of those rare occasions when Trevor wasn't that sharp," Brady said. "We got behind the eight ball early."

"Trevor was up in the zone a little," said Rivermen pitcher Dan Archer. "When he kept the ball down in the zone he mowed through the lineup. When he got the ball up they hurt him."

The Rivermen stumbled through the lineup eventually getting a total of six hits. Dustin Osterhaus Washburn's number one pitcher mowed through the lineup striking out three Rivermen.

"I called them in between games," Brady said. "I told them it was do or die, we can't afford to go out and play patty cake."

The talk apparently sparked something in the team as they went out and dominated the Ichabods. Being a best of three series the Rivermen faced a tough situation, they were one loss away from elimination. Archer started the second game and went the distance. He controlled the game striking out four batters, he walked only three batters. His strong effort kept the Rivermen from being eliminated.

"Archer has been dominating,"



Brady said.

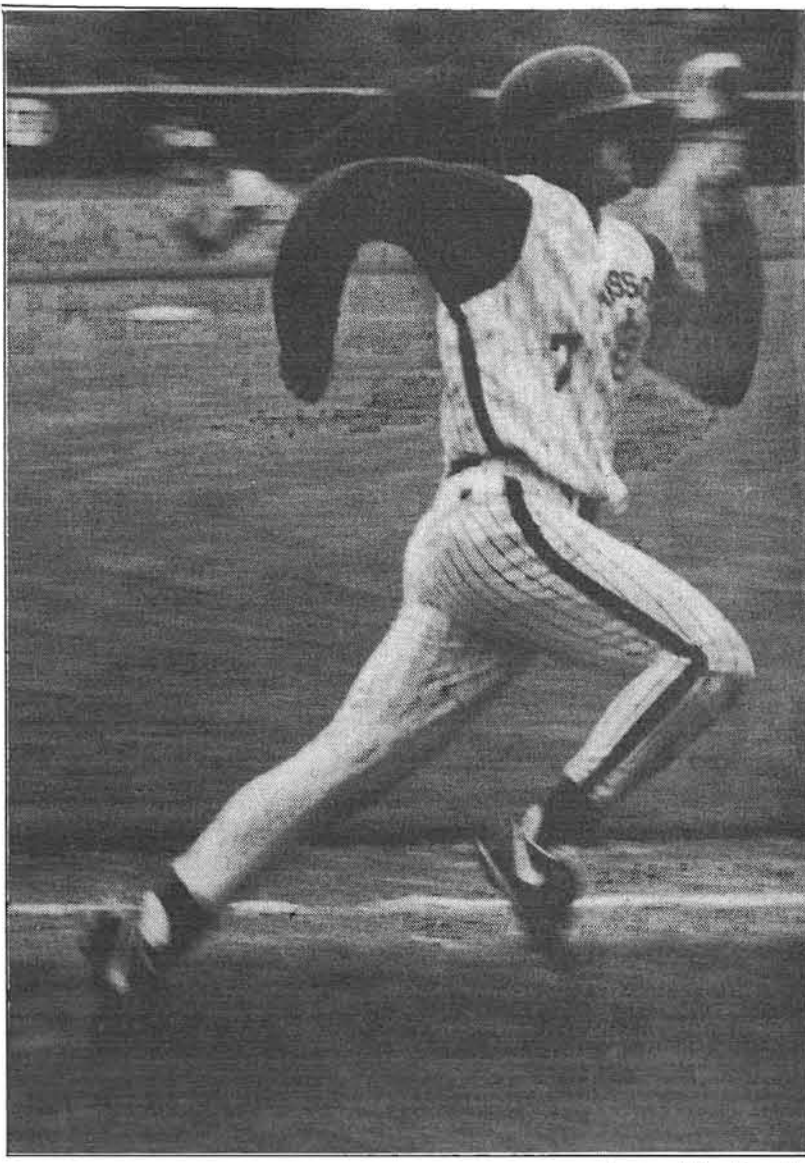
"I knew we could beat these guys," Archer said. "We are just a lot better team than they are."

A dangerous moment for the Rivermen was in the first inning when Washburn loaded the bases with no outs. Archer got Jeff Steimer the cleanup to hit into a double play.

He then struck out Aric Hess to end the inning.

"Todd has been catching for me," Archer said. "The defense is played great for me. Todd and I are in a groove. I'll think of a pitch and Todd will call it."

"When they had the bases loaded and no outs and didn't score, I think



photos: Ken Dunkin

that set the tempo for the whole game," Brady said.

The hitting came up big getting 13 hits in the 7-0 victory. Casey Hensley led the way going three-for-five. He had two singles and a double. Dan Chinnichi went two-for-four including a three run home run. Kelly Thornton hit the ball

Above: The Rivermen's Josh Banks rounds third base and is headed home.

well," Brady said. "Casey Hensley hit the ball well all day. Dan

see Home, page 11

# Kocis off to a great start

by Eric Thomas  
of the Current staff

Pitching fast-pitch softball is no easy feat, and maintaining a good batting average may be considered by some to be an even greater accomplishment.

It's good to see that one of our own Riverwomen has begun on the road to mastery of both. I am speaking of none other than our freshman pitcher/designated-hitter Nicole Kocis.

Kocis is majoring in undecidedness, but she is interested in education, either early development or high school. This is her second semester here at U.M. St. Louis, and she claims to be having a blast.

"St. Louis is neat," she said. "The city is so big, and there's always something going on. I really enjoy it here."

Kocis was born and raised in Springfield, Ill. After spending four years at Lanphier High School and visiting numerous colleges and uni-



Nichole Kocis  
softball player

versities, she chose to call the Riverwomen's dugout home.

"I really liked the campus way better than a lot of other ones I'd seen, even SIU-Edwardsville," Kocis said. "I knew I wanted to go away to school and live on my own."

As one might guess from watching her play, Kocis is no novice when it comes to softball. In addition to volleyball, she played softball all four years of high school. During her summers, Kocis has played in the American Softball Association for as long as she can remember. Her team, the Gillespie Sweet Things, is an 18-and-under fast-pitch team, and has gone to national tournaments, competing in Texas and California. As if that wasn't enough to keep her busy, she also plays in the National Softball Association. Last year her team

see Kocis page 12

# Rivermen net Wright

by Ken Dunkin  
sports editor

Great recruiting for the UM-St. Louis Rivermen basketball team has netted a great catch. They signed Jeremy Wright a 6-foot-2 shooting guard to a letter of intent.

Wright is a high scorer. He averaged 25.3 a game for Murphysboro High School in Murphysboro, Ill.

"Although he was the focus of our opponent's defensive game plan, Jeremy still led Southern Illinois in scoring," said Murphysboro head coach Richard Tillitt.

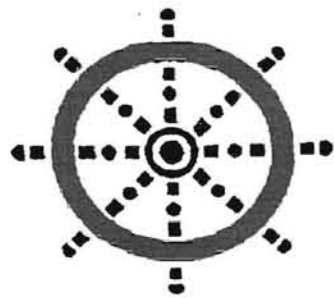
The season was a tough one for the Red Devils, as they finished 7-18, but, Wright still managed to break the 30-point plateau nine times including a 40-point effort.

He listed his most memorable game as, "against Sparta (High School of Sparta, Ill.). With one second left, I hit both one-and-one free throws to send the game into overtime. I hit a half-court shot at the buzzer to win the game in overtime."

His 3-point shooting will be needed by the Rivermen because of the lost seniors and 3-point bombers, Marcus Albert and Jim Robinson.

Wright displayed his aim by making 10-of-10 shots in the 3-point shooting contest in the Southern Ill. All-Star Classic.

"Jeremy has the ability to play a lot as a freshman," Rivermen head coach Rich Meckfessel said. "He is a very good outside shooter and a great athlete. He will play at shooting guard next year."



# Coaches Corner

Featuring  
**Carl Walker**  
Head Tennis coach

by Ken Dunkin  
sports editor

**Birthplace:** St. Louis, Mo.  
**College:** Tyler Junior College in Tyler, Tex.

**Favorite college memory:** I was able to work with Vic Braden. He came down to the university and taught a class.

**One thing I can't stand:** Bad attitudes. When you get mad on the court, it is a cop-out for things that aren't going well for you. You then display this emotion that doesn't help you in what you are doing.

**Role model:** Arther Ashe. He was a classic gentleman in every aspect as far as the aspect of tennis. He was not only a great player, he also displayed the positive attitude on and off of the court. He wasn't a person that be-

came wealthy from a sport and then didn't contribute back into the sport.

**Fantasy:** To have my own restaurant. A small restaurant with gourmet-type foods that I prepare.

**People who knew me in collage would say:** I try to get along with everybody. I carry a positive attitude, and I'm always smiling.

**Hobbies:** Cooking, I also like to bowl.

**What I am reading now:** Days of Glory by Arther Ashe.

**Greatest match I have ever coached:** It's hard to say that you have coached a match in tennis, because once they are out there it is hard to say things based on what is going on. You don't really want to say too much, because it could get them out of their rhythm.

The toughest would be our conference championship matches. We've had our conference tourna-

ment in St. Joseph, Mo the past three years, and the courts separated into three different sections. It is a continuous rat race to get from match to match to cheer your players on.

**Favorite sport (other than tennis):** I really love college basketball. It is way more exciting than pro ball to me.

I loved baseball as a kid, at this point, it is not my favorite.

**Favorite athlete:** Willie Mays, he was a tremendous athlete. He contributed to baseball as hitter and a base stealer.

**Favorite movie:** Pelican Brief.

**Favorite restaurant:** Big Sky Cafe in Webster Grove. Great food, and a really laid back atmosphere.

**Favorite fast-food:** Steak 'N Shake.

# Walker to step down as tennis coach

by Ken Dunkin  
sports editor

After only four years as tennis head coach at UM-St. Louis, Carl Walker is resigning.

Walkers time as a coach hasn't netted a lot of success at UM-St. Louis. He has never finished with a record over .500. Walker took a teaching approach with the team, and that style takes a lot of time, something many players didn't have.

"I thought I would be able to tie in the teaching and put together a team based on mechanics," Walker said. "The time frame wasn't there for me to do that. The kids were not able to put in a lot of time to practice. They were working, studying and going to class."

Overall, records and titles didn't come through for Walker, but he will walk away with a lot of experience. This was his first job as a coach for a school.

"It has been a learn on the job experience for me," Walker said. "It has been great, I thank UM-St. Louis

for the opportunity to coach." Walker has several things in the making for his post-UM-St. Louis time.

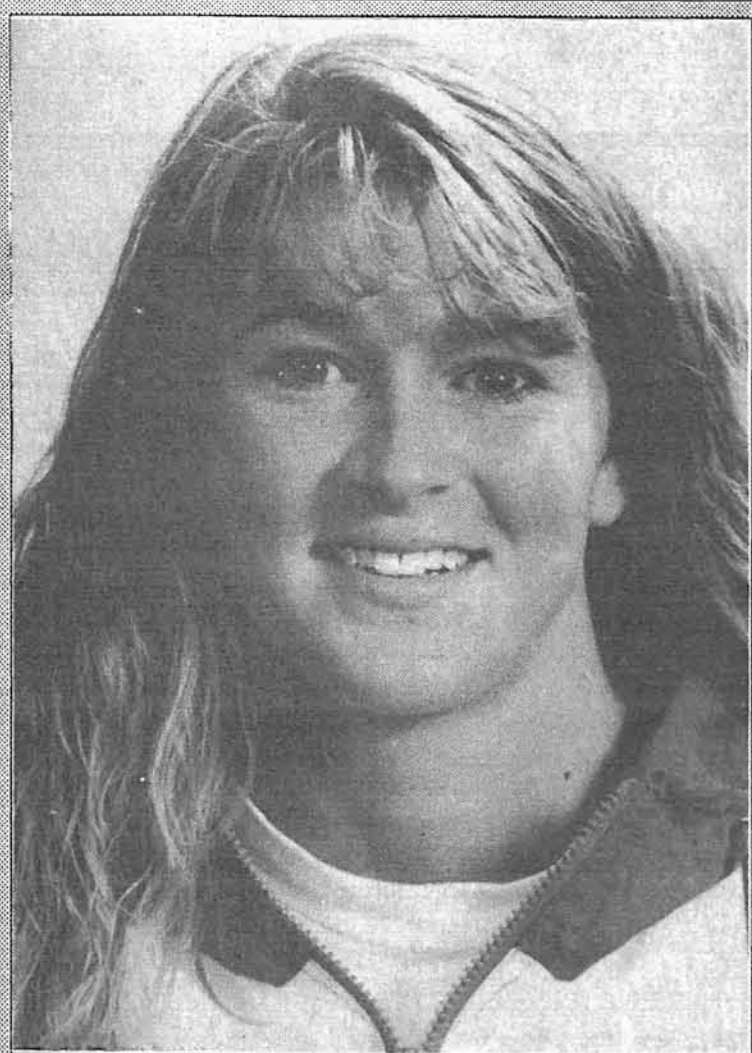
"I'm going to pursue other interests," Walker said. "A couple of friends and I are throwing around the idea of [opening] a coffee shop. Coffee shops are taking off. Towards the end of summer, I'll have some time to dedicate to it."

During this summer, Walker's time will be taken up coaching young tennis players. He is the head tennis pro at Dwight Davis tennis center. He has held that position for the past seven years.

"I am going to devote more time to the junior players I work with," Walker said. "They have the potential to be professional players. I would like to travel to some tournaments with them and coach from that aspect."

"It's a seasonal job so I work from May through October, all day every day. I love it. You have to come up with so many ways for different people to hit the ball."





Jenni Burton

### Dunkin from 9

he wasn't supposed to be a starter for the Rivermen.

Rivermen head coach Jim Brady said he was fifth or sixth in the depth chart out of six. With hard work and dedication he quickly worked his way into the starting squad.

"This is what every coach dreams about," Brady said. "You bring in somebody that you are not sure of, and they blossom into a player beyond what you expected."

The respect Banks has earned from Brady is something that doesn't come easy from most coaches.

"Judging from the way he works, it doesn't surprise me," Brady said. "He has that rare combination of work ethic and execution. He is a winner and a gamer."

"I don't think you can receive a higher complement than when a coach calls you a gamer and a winner, Josh Banks is both of those."

In case you missed it, the St. Louis Ambush are in the finals of the indoor soccer league.

They are as up two games to zero over the Harrisburg Heat as of *The Current's* press time.

The legendary indoor

defensman, Daryl Doran has been the star of the series up to game three. He contributed heavily in game one dishing off four assists.

In the 18-8 victory Doran scored a three-point shot and a two-point shot.

The Ambush are within two games of winning St. Louis its first championship since the Cards' victory in '82.

"I've won four before, the most recent in '90," said Ambush goalie Jamie Swanner. "I'm a St. Louis boy, so this will be sweet. It is a dream come true."

The Ambush will play two games at Harrisburg, if they lose one game, they will be coming back to the Kiel Center.

"I expect to come back to St. Louis," Doran said. "We're going to play it one game at a time."

They have a great shot at winning the series. Tickets still remain for game five Wednesday night.

It has been a great year sports fans, but the school year is almost over and so is the paper.

Have a great summer, and I'll see ya next semester.



Todd Rick

## Stockdale helps Riverwomen to 35 wins

by Eric Thomas  
of *The Current* staff

Well, the season for the U.M. St. Louis Riverwomen softball team is not yet over, but regrettably the season for the *Current* has drawn to a close. However, fear not, because the words and numbers following contain a great deal of knowledge concerning the year-end round up of the girls' stats.

The overall team record as of press time was 35 wins, 25 losses, and a zero in the tie column.

"The team has been rather solid this season," said head coach Kristi Toppins. "And we've taken the good with the bad, and we've tried to let the losses roll off us and look forward to the next game."

To begin with, Nicole Kocis, pitcher and designated hitter, played in 55 games, and after 149 at-bats, her average was .383. Forty-one Riverwomen crossed the plate, batted in by Kocis, and after 11 stolen base attempts, she has been caught only twice. She has pitched in 17 games and has 4 shutouts.

Shortstop Nicole Christ has played 60 games and carries a .372 average, along with 38 RBIs. Christ has reached base 71 times, and 21 of those times she found herself crossing right over first base and standing on second. In the stolen base department, her percentage is .875. She also found herself on the mound during one game, pitching one and one-third innings and giving up no runs.

"I wanted to shake up the fielding, to see who might fill the short stop position if Nikki's knee ever gave out," Toppins said.

Christ has smacked one out of the park, and she has three triples behind her name to round things out.

Third baseman Nicole Barrett has 15 stolen bases and 55 hits in 58 games, which averages out to .316.

Batting clean-up is Tracy Kitrel, and she holds the team-high 44 RBIs. Kitrel has one home run, and is a thief on the base paths. She took 23 of 24 without asking, which entitles her a ranked spot in her division for offense.

"Tracy is a real shit disturber when it comes to stealing," Toppins said. "Stacy (Rathbun) and D.J. (Martin) hate to take pitches, but they have to so Tracy can do her thing."

Rathbun has played in all 60 games and steps in with a .273 average. Rathbun is 100 percent in the stolen base department, surviving all 15 attempts.

Martin has gotten the call at first base 59 times, and she's completed them all. She's got a .272 average achieved by 40 hits, 28 RBIs, ten doubles, one triple, and is 5-for-5 with regards to base thievery.

"D.J. has been very consistent in

the field with very few errors," said Toppins. "And she makes the plays look easy. She has a knack for digging the balls out of the dirt and keeping the play simple. She has been bothered by an ankle injury which has hindered her on the base-paths, but I can always count on her to come through in crucial situations."

Diana Mooney is another of the Riverwomen's pitchers, and has two RBIs from only four at-bats. She has one shut-out in ten appearances. Angie Bianca upholds a .222 batting average, along with 29 RBIs. Nicole Patton has 58 games under her belt this season, and an average of .220 to go along with them. She's got 14 RBIs on her side, and seven doubles to match. She's graduating this semester, and states that this was the best team she has ever played on.

"I've played on a couple of different collegiate teams, like with Purdue last year," said Patton. "With the championship coming up next weekend, I couldn't think of a better way to end my career here at UM-St. Louis."

This season was Patton's first time playing third base, and she had some problems adapting to the position of short-stop.

"I felt a little uncomfortable in the beginning, but Kristi (Toppins) helped me tremendously to adjust," Patton said.

Audrey Kramme, catcher, has been a pleasant surprise to Coach Toppins and the rest of the team.

"Audrey is a perfectionist," Kocis said. "She's very smart and gives 110 percent all the time. She has a lot of concentration and drills me hard when I'm on the mound. She's an inspiration to me personally on the

see *Softball*, page 11

**Patio Dining Available**

**BREAKAWAY CAFE**

**MAKE A BREAK AWAY FOR BREAKAWAY**

LUNCH & DINNER SERVED  
CLOSED SUNDAY

OWNED & OPERATED BY PAUL BANDERA

8418 Natural Bridge  
**381-3554**  
1 mile east of Hwy. 170, across from UMSL

BEER • WINE • COCKTAILS

SALADS • STIR FRY • SANDWICHES • PIZZA • PASTA

## LitMag

Voted Outstanding Student Organization of the Year

Reception and reading for the 94-95  
issue of LitMag

"An Archer's Dream"

Over 20 poets and fiction writers are scheduled to perform.

Opening speaker: Novelist and UMSL Professor Dr. David Carkeet

**OPEN TO THE PUBLIC**  
**FREE ADMISSION**

Plenty of safe, well-lit street parking.

Some refreshments provided, inexpensive cash bar

Reading will be followed by sets from the band Drunkabilly

**Friday, April 28 7:00-9:00 p.m.**

**The Way Out Club**

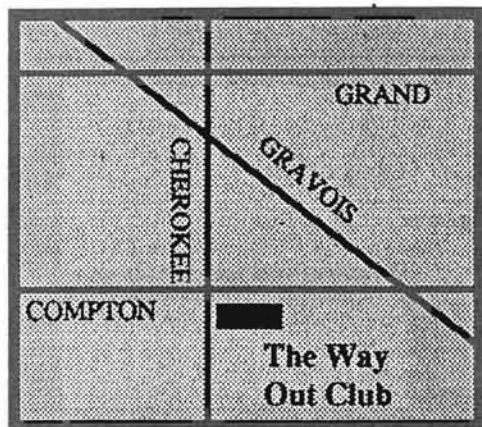
in the S. Grand District

3159 Cherokee/NE corner of

Cherokee and Compton

Phone: 664-7638

Owned and operated by Bob Putnam and Sherri Lucas



LitMag's Final Meeting of the Year  
Saturday, May 6,  
2:00 PM at  
Blueberry Hill in  
the U. City loop.

**Positions available for next year are:**

Editorial-Directing, Acquisitions, Production, Copy & Asst. Art editors

Official-President, SGA Representative

Others-Selections chair, selections staff, production asst's, proofreaders, distribution manager, PR director, business director

Little or no experience necessary. All majors are welcome.

**If you've ever been interested in LitMag, now's the time to check it out!**

**The Women's Center Presents**

**DONUT DAY**

Close out the semester with complimentary donuts and coffee.

**MONDAY, MAY 1, 8:00 AM-12:00 PM**

211 Clark Hall

516-5380



Summer jobs at Kelly are a great way to enhance your skills and earn extra money. Plus, gain valuable work experience that may increase your career opportunities. And with Kelly, there's never an applicant fee.

- SECRETARIES
- WORD PROCESSORS
- TELEMARTERS
- CUSTOMER SERVICE REPRESENTATIVES

**CALL KELLY NOW!**

**314-576-1389**

**KELLY** Temporary Services

An equal opportunity employer/never an applicant fee. U.S. law requires proof of identity and right to work in the U.S. ©1995 Kelly Services, Inc.

**WE'LL ERASE YOUR COLLEGE LOAN.**

If you're stuck with a student loan that's not in default, the Army might pay it off. If you qualify, we'll reduce your debt—up to \$55,000. Payment is either 1/3 of the debt or \$1,500 for each year of service, whichever is greater.

You'll also have training in a choice of skills and enough self-assurance to last you the rest of your life.

Get all the details from your Army Recruiter.

**CALL 426-0335**

**ARMY. BE ALL YOU CAN BE.**



# Rivermen improve on last season

by Chris Cox  
of The Current staff

In 1993, the UM-St. Louis baseball team went 31-11 and made a trip to the College World Series as Southern Division Champions in the Mid-America Intercollegiate Athletics Association (MIAA).

In the series, the Rivermen dropped a 5-4 decision to California Poly-San Luis Obispo and lost 6-4 to Adelphi.

But that year, the Rivermen didn't have Danny Archer, who was recently named MIAA pitcher of the week; they didn't have the Trevor Wolfe, who is 3-0 with a 2.87 earned run average; and they didn't have a player named Casey Hensley, who is batting .366 and has been drafted by Major League Baseball's New York Yankees.

These three players and a host of others helped the Rivermen to a 28-12 record in this year's regular-season campaign that ended with a 16-15 loss to Southern Illinois-Edwardsville on Tuesday.

## Rivermen records

1993-94: 31-11  
1994-95: 31-12\*

\*still alive in playoffs

This season is a step up from last season, when the Rivermen finished 31-16 good for third place in the MIAA. It was the lowest the team had finished since 1995 when it placed fifth.

The team knew that it had the *Softball from page 10*

field and at school."

"She has a great deal of determination and has caught all but one game," Toppins said. "For a quiet freshman, she sure can fool you. She has had quite an impact on the team. Audrey has one hell of an arm, not to mention some pretty sneaky moves to pick runners off of the bags."

Kramme's average at press time was .213, and she has 24 RBIs, not to mention her three triples and six doubles.

"Audrey is all heart, and she gives the team all she has, mentally and physically," Kitrel said. "She's too hard on herself though and never gives herself a break when she makes a mistake. But it's OK, because the team picks her up in the dug-out."

Now back to pitchers, and up next

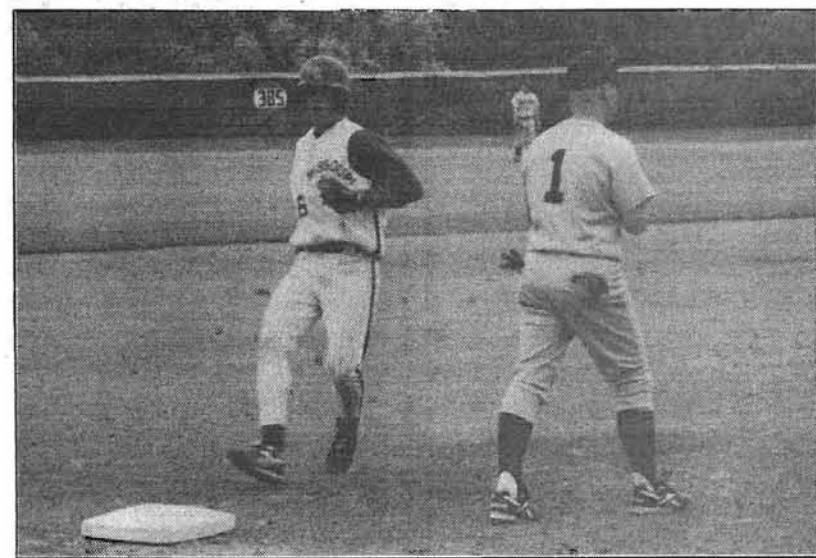


photo: Ken Dunkin

Mike Atkinson pulls up at third base in a game against Washburn.

talent to win this season. In fact, coach Jim Brady was visibly upset last week when his team won three of four games against the Pittsburgh State Gorillas but had to settle for second place in the MIAA.

"You can look at it two ways," Brady said. "Now, we're able to host the playoffs and that gives us an advantage because we don't have to travel, and we know our own field; we can get ready right here."

"But, I don't think that we played up to our potential. We seemed to have mental breakdowns, and it seems to be an ever-present problem. We take one step forward and two steps back."

The Rivermen's first step this year was back, an 8-5 loss to Central Arkansas in the season opener. But they went on to win their next three in a row over Northern State, Boston College and LaSalle.

The Rivermen lost three of their

next eight games, but they turned things around with a four-game sweep of the University of Missouri-Rolla.

They had three games remaining before a four-game stint with conference-rival Missouri Southern. They knocked off McKendree, SIUE and Nebraska-Omaha.

Against Mo. Southern, though, the Rivermen could only manage to win the third game, 12-9, behind pitcher Steve Eckhoff. The first two losses were each by one run. Missouri Southern won the fourth game 11-5.

"All of those were tight ballgames," Brady said. "They could have gone either way. We came away like we could have won the series, because we knew that they were not a better team than us."

The Rivermen lost only four of the remaining 16 games on the schedule. They were to Southwest Baptist (6-4), Quincy (2-1), SIUE (9-5) and Pittsburgh State (5-3).

The wins were big, including a 18-1 rout of Washington University, coached by 1,000-game winner Ric Lessmann and a four-game sweep of Lincoln.

"I expected us to be better," Brady said. "We did not take off like I had expected."

Jill Stockdale. She has started 15 games, but played in a total of 21. Stockdale is 7 for 7 with regards to base stealing.

As for her performance on the mound, she has won 19 and lost 10, saved four, and shut out four teams. After pitching 218 innings, she has struck out 146 batters. Her ERA is an astonishing 1.32, and thus she is dubbed by the Riverwomen "the wild thing."

Vicki Tepen started on the mound twelve times, and took over in relief in 18 more.

Julie Schwartz has played in 20 games this season and accumulated six RBIs and one double. Patty Kamradt has played 22 games, has 3 RBIs, and has not been caught stealing in seven attempts.

Chinnici's homer broke their back."

The Rivermen were scheduled to play Sunday in the series finale against Washburn but the game was postponed.

"I hope we can keep the momentum we picked up," Archer said. "Hopefully we will come out and kick the crap out of them (next time we play them)."

The series is now in the hands of the conference athletic directors. They will decide what to do about the rainouts. The choices are to play the game at Rivermen Field Tuesday to decide who will advance. The second is to have the Rivermen play Washburn Thursday. The downfall of this choice is the No. 1 pitcher for each team will be used. Whichever team advances will be forced to throw their No. 2 pitcher against the next teams No. 1 pitcher.

**'If we play up to our potential, we will do well. I feel confident about us winning the tournament.'**

**- Rivermen coach Jim Brady**

The third choice would be to do a six team tournament. In either choice the Rivermen are confident in their chances in winning any option.

"If we play up to our potential we will do well," Brady said. "I feel confident about us winning the tournament."

## Women's basketball signs four in an effort to fill roster

by Ken Dunkin  
sports editor

The UM-St. Louis Riverwomen basketball team went through this season short on players, but they have solved this problem with the signing of four high school players.

Throughout much of the season, head coach Jim Coen only had seven players to choose from, at several points he had only six.

Signing with the Riverwomen were: Charlee Dixon, a 5-foot-1 point guard from Breese, Ill.; Krystal Logan, a 5-foot-9 forward from Nashville, Ill.; Denise Simon, a 5-foot-11 forward from Duchesne in St. Charles, Mo.; Michelle Hogan, a 5-foot-3 guard from House Springs Mo.

The guard situation for the future looks bright, as Dixon and Hogan step in. Dixon averaged 9.4 points, 2.3 rebounds, and 4.0 assists a game. She drained 32 percent of her 3-pointers. Hogan was the point guard for the Northwest High School team that reached the Missouri 4A quarterfinals before falling to Cor

Jesu, the eventual state champs.

"Michelle handles the ball well," Coen said. "It will be nice having her and Dixon in the same backcourt."

Logan joins a crowded front court that includes early signee, Sara Carrier, from Minnesota and several players from last year's squad.

"Krystal is a good post player with excellent moves to the basket," Coen said. "She probably won't be an immediate impact player, but she will help us down the road."

The numbers Simon put up in high school could push her to the top of the crop. She averaged 15.1 points and 9 rebounds per game. She also hit 72.2 of her free throws.

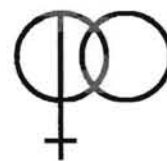
"Denise has a strong build and should be able to play inside with strength," Coen said. "She'll be a tremendous defensive player, and she has the potential to contribute immediately."

"Overall, I'm very pleased with the class," Coen said.

"We've got players at every position, and they can all play more than one position, too. They can all shoot the three."

## AM I PREGNANT?

FIND OUT FOR SURE.



**CRISIS  
PREGNANCY  
CENTER**

- FREE Pregnancy Testing
- Immediate results
- Completely confidential
- Call or walk in

**725-3150 447-6477 831-6723 227-5111**  
950 Francis Pl. 2352 HWY 94 3347 N. HWY 67 510 Baxter Rd.  
(St. Louis) (St. Charles) (Florissant) (Ballwin)

**24-Hour Phone Service**

## DUPLEX

for rent

on quiet private street near UMSL  
Spotlessly clean  
Tastefully decorated  
Wallpaper  
Carpeting  
Professionally landscaped  
Parking at entrance  
Small one or two person.

**350/month  
423-2017**

## Young Adults Outreach

Sunday Worship Services

8, 9, & 10:30AM

LAF Bible Class 10:30AM Sundays

- ✓ Small Group Bible Studies
- ✓ Outreach Parties
- ✓ Sand Volleyball Leagues
- ✓ New Friends



## First Christian Church of Florissant

a Christ-Centered,  
Bible-Teaching,  
Non-Denominational  
Church



2890 Patterson Road  
Florissant, MO 63031

314-837-2269 ask for Steve or Chris

## Moving Home for the Summer?

NO MINIMUM CHARGE.

LOW RATES

TO ANY POINT IN THE WORLD  
WE SUPPLY PACKING MATERIAL

FOR INFORMATION AND PRICING CALL  
AIR, LAND, & SEA EXPRESS at:

**(314) 423-0559**

CONSIDERING A CHIROPRACTIC CAREER?  
CONSIDER LOGAN AS ITS FOUNDATION.

**Logan College of Chiropractic is now accepting applications for our 1995 entering classes in January, May, and September.**

### Required at time of entry:

- Specific degree-level coursework from an accredited college or university.
- A personal interest in a career as a primary care physician.

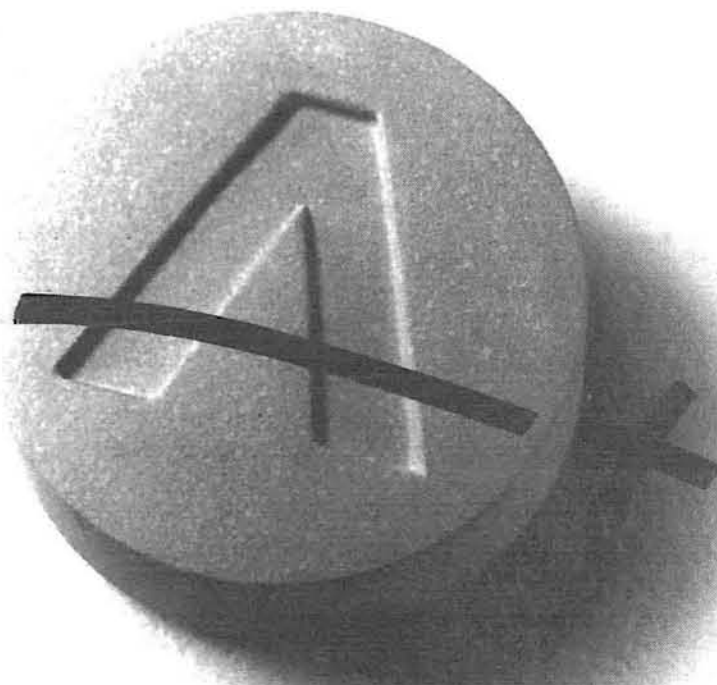
### Logan College offers:

- A professional school of 800 students with an extremely low student/faculty ratio.
- Preparation for a career as a doctor, licensed as a Primary Healthcare Provider in the United States and all Canadian provinces.
- In five academic years, a combination of basic science and clinical science with clinical preparation, clinical performance, and chiropractic concepts and practices.
- Accreditation by the Council on Chiropractic Education and the Commission on Institutions of Higher Education of the North Central Association of Colleges and Schools.
- A beautiful campus in the suburbs of a major metropolitan area with a low cost of living.

For complete information, just request our portfolio by writing or calling, toll free, 800/782-3344 (in Canada, it's 800/533-9210).

**LOGAN**  
COLLEGE OF CHIROPRACTIC

1851 Schoettler Road • Box 1065 • Chesterfield, MO 63006-1065



**Surprise your folks.**

When you stay awake in class, you tend to learn more. (Unless you have an uncanny talent of learning through osmosis.) So don't let fatigue get in the way of your A, Revive with Vivarin®. One tablet has the same amount of caffeine as about two cups of coffee. And it's just as safe. Hey, anything is possible, if you're up for it.



**Revive with Vivarin®**

©1995 SB SmithKline Beecham  
Consumer Healthcare  
Use only as directed.



# Riverwomen battle Mo. Western

by Eric Thomas  
of The Current staff

## UM-St. Louis 3, Imporia 2

The UM-St. Louis Riverwomen were in Shawnee, Kan., over the weekend and had some pretty tough competition to deal with.

## Washburn 5, UM-St. Louis 1

The Riverwomen were faced with a dilemma in the first inning when the Washburn women hit a grand slam. Jill Stockdale then took the mound to relieve Vicki Tepen and allowed only one run, but the UM-St. Louis bats remained rather dormant.

## UM-St. Louis 4, Northwestern Missouri 0

The Riverwomen came alive in the fifth inning to beat Northwestern Missouri. With Stacy Rathbun and Nicole Barret and base, Nikki Christ sacrificed to advance them. Tracy Kitrel, Nikki Kocis, and D.J. Martin all had RBIs for the Riverwomen. Jill Stockdale was on the mound again and shutout Northwestern.

## UM-St. Louis 4, Northwestern Missouri 0

The Riverwomen again knocked off Northwestern by the same 4-0 score. Stockdale wanted the call, and she got it. She used two her better pitches, the fast ball and curve ball, to frustrate the Northwestern batters.

In the first inning, Barret and Christ had hits, and Kocis followed

up with two RBIs.

"With Northwestern getting only two hits, the defense had a pretty easy game," Riverwomen head coach Kristi Toppins said.

## Missouri Western 5, UM-St. Louis 4

Kocis started the game and pitched 5 2/3 innings.

"The girls on this team are very solid hitters," Toppins said, "and when they get a hold of the ball, it can be disastrous."

In the fourth inning, Christ nailed a double. Kocis chased Christ in with a single. Patton and Audrey Kramme both had doubles, and Martin also had an RBI.

Missouri Western got two runs in the sixth, and they may have scored again if it were not for the stellar defense by Tracy Kitrel.

"I knew I was going to catch that ball as soon as it flew off the bat," Kitrel said, "and that's all there was to it. I was aware of the fence, but the play comes first."

## Upcoming game

The Riverwomen next play April 26 at Lindenwood.

The MIAA tourney is set to begin April 28.

# Let's get rocked



photo: Ken Dunkin

A Harrisburg Heat player tries to head the ball upfield as a St. Louis Ambush player attempts to steal the ball. The Ambush currently lead the series two game to zero. Great tickets still remain for game five (if necessary) Wednesday night.

## Kocis from page 9

placed second out of 75 teams across the nation, which netted them "a big ol' trophy."

"The experience that I've gotten from these leagues can't really be fully expressed," Kocis said. "I have battled against Class A women who are 23-25 years old, and that's been

kinda tough. But I've come a long way, and I can only get better."

Nikki regrets that she is now too old for her former team, but she knows that she'll be playing ball this summer in addition to taking a class or two at Lincoln Land Community College and working a part-time job

in Springfield.

Kocis' senior year at Lanphier was a rather busy one. She was the runner-up for the Female Athlete of the Year Award in 1994, and on May 6 she will return to her alma mater to ceremoniously award the prom queen with her crown, as is the custom for prom queens from the previous year to pass down their title.

Student government is nothing new to Kocis either. She was the senator her senior year.

One difference between Kocis and her mother though would be the desire for a "yin/yang" tattoo on her ankle.

"My parents said they'd kill me, then disown me, so I have reconsidered that move, for now," she said.

The biggest change she has had to adjust to is the daily homework.

"I'm studying all the time, and I feel they should stick a mailbox in the math lab for me. I'm in there so much. These classes are real hard. The 12 hour load I'm carrying this semester has really been a challenge."

Kocis does not really view softball as being a challenge, but rather approaches each game with a "just go out and play" mentality. Her motto, as it were, comes straight off of her favorite "No Fear shirt," which says, "You Can't Steal Second With Your Foot On First."

Rather appropriate, don't you think?

**TWA IS HIRING**

TWA is an equal opportunity employer

### Reservations Sales Agent

TWA's St. Louis Reservations Center is growing. Needed are individuals with a sales or customer service background to assist us in meeting the expanding needs of our customers.

**QUALIFICATIONS:**  
18 Years of Age  
High School Grad. or GED  
Typing Skills  
Attend TWTA Tuition based training financed through payroll deduction

**TWA OFFERS:**  
Salary Plus Incentive Program  
Excellent Travel Benefits  
Medical/Health/Life Insurance effective the first day of work!  
Career Growth Opportunities

Applicants are asked to contact  
**1-800-942-7467**

NOW is the time to Start a Career with TWA!

TWA's Trans World Travel Academy 11495 Natural Bridge Road - Lindbergh & Natural Bridge Rds.

**The Employee Owners of TWA Invite You to Join our Team!**

# Normandy Bank

Get Your Money Anytime You Need It-Right Here On Campus!

## THE AUTOMATIC TELLER

at Normandy Bank in the University Center.

Normandy Bank Customers, get your application at the facility in U. Center or call us at 383-5555. If your account is with another bank your ATM card can be used at the machine in U. Center if it has a BankMate or Cirrus symbol on it.

Member FDIC 383-5555  
7151 Natural Bridge • St. Louis, MO 63121

"I got the summer job I wanted - at the right time, the right pay and in the right field. Unbelievable. I did it with just one call to Olsten."

Don't wait - start lining up the job you really want. Olsten assignments are an ideal way for you to make good money while gaining valuable experience in an exciting profession.

With 575 offices, Olsten serves more than 90,000 accounts with assignment employees in over 300 skill categories.

It's going to be a busy summer. So call now to get the job you want. We're in the white pages.

**Call 434-2800**

America is going to work with us

©1995 Olsten Corporation EOE M/F/D/V

# University of Missouri-St. Louis

## MARGUERITE ROSS BARNETT SCHOLARSHIP

for Part-time students

**APPLY NOW FOR THE 1995-96 SCHOOL YEAR!**

APPLICATIONS ARE AVAILABLE IN THE OFFICE OF STUDENT FINANCIAL AID, 209 WOODS HALL. FOR MORE INFORMATION, CALL 516-5526.

The scholarship is specially designed to support the educational goals of part-time undergraduate students at UM-St. Louis. It is in recognition of Marguerite Ross Barnett's ideals of scholarship, initiative, and achievement.

The scholarship is open to:

- Part-time, undergraduate Missouri resident students with financial need who work at least 20 hours per week.
- The scholarship covers the cost of tuition for part-time students.
- Awards are given to eligible applicants on a first come, first served basis.



# Disease prompts removal of 18 trees

by Matthew J. Forsythe  
editor-in-chief

The chain saws of a landscaping crew hired by the University came roaring to life last weekend to stop a serious disease.

The University has targeted 18 Austrian pines to be cut down because the trees are infected with a disease called pine wilt.

This disease can cause trees to die rapidly (within a few months or a year of being infected), so the University is taking action now. Eight other trees on campus will also be cut down because of their rapidly decaying condition.

Ron Schrum, Manager of Facilities Services, said it is a question of safety.

"I would hate to see someone injured because of these trees," Schrum said.

Schrum said the dead or dying trees could be a danger to passersby if



photo: Monica Senecal

Three workers from Shield Shade Tree cut down Austrian pines by the U. Center Saturday; White pines will replace them.

a decaying limb were to fall.

Landscape Architect Patrick Worzer, a consultant of Land Design Services, made the original judgement about the pines. Schrum hired

Worzer to take a look at the trees and advise the University about what to do.

"[Pine wilt] is a common problem with older pines," Worzer said.

"Austrian pines seem to be more susceptible to the disease."

Worzer said the disease is transmitted by the Missouri Long Horned Beetle. The beetle carries a pine wood neatode which colonizes in the pine wood resin and results in rapid wilting and death.

Worzer said it was important to remove the trees quickly because the infection could spread to other pines nearby.

"The only solution is to cut down the trees and dispose of the wood," Worzer said.

After receiving a recommendation from Worzer, Schrum then went to Victoria Sork, the director of the International Center for Tropical Ecology, for a second opinion. According to Schrum, Sork approved the plan to cut down the Pines.

Schrum said the Austrian pines would be replaced with White pines which are more receptive to a Midwestern environment.

# KWMU reaps record sum; staffers win awards

by Jeremy Rutherford  
managing editor

The annual membership drive for KWMU 90.7 FM helped the station raise \$167,531 from 2,139 listeners — an increase of over 67 percent from last year.

The event, Spring Drive '95, gave the community a chance to call the station and pledge its support for St. Louis' only National Public Radio affiliate. Local businesses and corporations contributed \$23,000 in matching challenge grants.

The money raised at the drive is used to purchase programs heard on KWMU and for the operation of the station.

"The St. Louis community supports the quality programming from National Public Radio," said KWMU General Manager Patricia Wenthe. "That, along with recent discussions about reduced government funding for public broadcasting, moved the amount raised during the drive to an all-time high."

Wenthe was referring to Congress plan — or the Contract with America — to cut spending in an effort to relieve the deficit. National Public Radio, members of Congress have said, would be affected.

Wenthe said before the membership drive that, because of the plan to

Three staff members of the news department at KWMU were recently honored at the Illinois Associated Press competition.

News Director Lester Graham won first place for an in-depth report about the effects of the 1993 flood on 1994 farm crops. The report detailed

bling boats.

Mark Manelli, a news producer, won second place in the sports category for a report on the Ladies Professional Golf Association (LPGA) Tour in St. Louis last summer. Manelli included in his report how and why women golfers are viewed differently by golf fans.

Manelli also won a first place award in a Radio-Television News Directors Association (RTNDA) regional awards competition.

The first-place large market regional award was presented to Manelli for a report about fencing at the Olympic Festival in St. Louis last summer. The report has been forwarded to RTNDA's national Edward R. Murrow competition.

Talk of the Nation science anchor Ira Flatow is hosting a KWMU Connection reception on Wednesday, May 24, from 6 to 8 p.m. at the St. Louis Science Center.

**'In coming years, we will look for continued strong support from listeners to maintain the quality programming on KWMU.'**  
**-Patricia Wenthe, KWMU general manager**

reduce government spending, this year's fundraising efforts were very important. Nearly half (46 percent) of KWMU's budget comes from listener donations.

"In coming years, we will look for continued strong support from listeners to maintain the quality programming on KWMU," Wenthe said.

research by agronomists on plant disease and the flood's impact on soil.

Andrea Murray, a news producer at the station, also won an award in the Investigative Reporting category. Murray was awarded second place for a report about slot machines and how they affect income and attendance on Illinois and Missouri gam-

For late Sunday evenings with squinted eyes and strapped mind, for listening to the same question one hundred thousand times, and for just putting up with the general bull that goes along with putting out a campus newspaper, the staff of *The Current* wishes to congratulate

**Matthew J. Forsythe**  
**Editor-in-Chief 1994-95**

for a job well done and another successful year of publication. Thank you and best of luck in your future endeavors. Remember your friends and know you are always welcome home in your house-our house-the house of *The Current*.

*Tricia Buell*  
*Michael P.B.*  
*Romy*  
*Don Holt*  
*Julie Pressman*  
*Monica Senecal*  
*Scott Lamon*  
*Julie L. Ball*  
*Jeremy P. Rutherford*  
*Michael A. Zeno*  
*Robert Carlson*  
*Don Brown*  
*Ken Durkin*  
*Amy Price*  
*Judi Linville*  
*Mark - Eric Thomas*

Cut from page 1

gressman Jim Talent (R-MO) said there is no proposal to cut the work-study program or any federal grant program. He said the only change in financial aid on the table that congress is considering is the elimination of the in-school interest subsidy.

Currently, students do not have to pay the interest on their loans while they are in school, instead the taxpayers carry the cost.

Talent said the elimination of this program wouldn't require students to make any payments while they are in school. Instead, the interest would be moved into the amount of the loan, which would mean an additional \$21 per month during the life of a 10-year loan.

Talent said this will benefit students in two ways.

First, students would receive a net financial gain from the plan. With a balanced budget, students will be presented with better job opportunities when they leave school, and lower interest rates for home mortgages, car payments, and student loans. Secondly, Talent says the current debt of \$4.8 billion (\$18,000 for every person in America) will be paid by the American workers of the next generation.

Talent said the Republican budget plan will put the government on a path to a balanced budget by approximately the year 2000, otherwise "the students of today will be paying for the blindness of past national leadership."

Talent said the average student graduating this year will pay more than \$115,000 to service the federal debt during the course of his or her lifetime.

The National Association of Student Financial Aid Administrators (NASFAA) estimates that the cost of taking out a loan will increase 20 percent for undergraduate students and 27 percent for graduate students if the proposed cut to in-school interest subsidy is approved by congress.

Gephardt said this increase would hurt students who rely on loans to attend college, and with the cost of

attending college on the rise every year, even more students will be hurt.

"These student aid cuts could not have come at a worse time," Gephardt said, in a letter released to the press concerning cuts in financial aid. "The Contact With America is slamming the door on America's future."

UM-St. Louis Assistant Director of Financial Aid Jerry Joseph said the Republicans are not out to eliminate the Stafford Loans program, but instead they want to shift the responsibility of paying the interest from the government to the students.

Joseph said students have the option of two types of Stafford Loans programs, subsidized and unsubsidized. By shifting the responsibilities of paying the interest to students, the Republicans proposal will eliminate the subsidized Stafford Loans program and make it all unsubsidized.

In the end, Joseph said students will lose their options, and the costs students incur will be greater than what the Republicans are saying.

"If you look at the overall picture, this is going to impact the students dramatically," Joseph said. "Students are going to end up paying more when they graduate. It's going to be much more than \$21 a month."

Joseph said that congress should hit other federally funded programs, rather than hitting the students by cutting financial aid.

"The students are going to be the people paying taxes in the future," Joseph said. "You want to give them the full opportunity to get an education. If you take that opportunity away, you're not going to have taxpayers in the future. You're going to have more people on social welfare."

At UM-St. Louis there are 2,748 undergraduate students who receive Stafford Loans, 137 students on the Work Study Program, 490 who receive SEO Grants, and 190 undergraduate and graduate students who receive Perkins Loans. Of the 13,000 plus students at UM-St. Louis, 61 percent of them use Financial aid programs.

# SIUE fits your Summer plans.

If you're planning to be in the St. Louis area this summer, stop by Southern Illinois University at Edwardsville for a few hours — credit hours, that is.

SIUE offers more than 650 courses — from Accounting to Zoology — in more than 60 areas of study, so chances are you'll find a course that **fits your academic needs.**

SIUE offers day or night classes ranging in length from one week to eight weeks, and meeting at a variety of sites — including local community colleges, St. Louis, even Australia — so chances are you'll find a class that **fits your schedule.**

And SIUE's tuition is among the most affordable in the region, so chances are you'll find a class that **fits your budget.**

**No More Quarters**  
SIUE is on a semester calendar, so your credit hours will transfer nicely.

To learn more about how to fit SIUE into your summer plans, call (618) 692-2075 and ask for a Summer Class Schedule. **Call now! Application Deadline — May 1**

SOUTHERN ILLINOIS UNIVERSITY AT EDWARDSVILLE



O'Keefe said the committee refused to give him a copy of the election rules until 10 minutes after the polls were suppose to be opened.

O'Keefe said he was extremely frustrated that not all of the polls were opened as advertised, and the ones that did open were delayed by as much as an hour and twenty minutes. He said the failure to open the polls at Marillac Hall (south campus) and SSB most likely cost him the election.

In addition, there were never signs posted at the closed polls letting would-be student voters know where to go to cast their ballots.

All three candidates, who were out by the polling places electioneering for their tickets, were expecting all the polls to be operational, and they were disappointed to see that some of the polls did not open.

"I'm not real happy about it," said SCA Presidential candidate Beth Titlow. "To me, this is a student election, and the more opportunities we take to reach the students to increase their involvement is good for SGA. I think it's very sad that we've only got the two polls up right now. It has been a mess."

"Everybody knew where and when they were suppose to be there," Titlow said. "This year, I think that it's just lack of organization".

**-Tom O'Keefe, former SGA  
presidential candidate**

"It's kind of convenient how all of the polling places that were open would benefit Beth, Clint and Pat the most," O'Keefe said, "and all the places that would have benefited myself, Jason and Pam the most are

When asked about the numerous complaints regarding the results of the election, Election Board Chairman Steve Bartok had no comment.



# RIVERPORT

## Amphitheatre

It's The Best Part Of Summer!



**JUST ADDED!**  
**FRIDAY**  
**JUNE 9**

*Reserved Tickets  
On Sale Saturday!*  
At 10am!

**JUST ADDED!**  
**SATURDAY**  
**JUNE 17**

*Reserved Tickets  
On Sale Saturday!*  
At 10am!

**JUST ADDED!**  
**SATURDAY**  
**JULY 29**

*Reserved Tickets  
On Sale Saturday!*  
At 10am!

## REO SPEEDWAGON

### CHEAP TRICK

**STARSHIP w/MICKIE THOMAS**

**ALL TICKETS \$14.50\* THRU APRIL 29th!**

**SOUTHWEST AIRLINES SUMMERFEST**




# Reba

**TOBY KEITH & RHETT Akins**

## REBA LAWN PACK!

**BUY LAWN TICKETS TO REBA & ALABAMA**

**FOR JUST \$3.00\*!**

**LAWN TICKETS FOR ALL CONCERTS ON SALE NOW FOR YOUR CONVENIENCE!**

**AND DON'T MISS:**

<p><b>SAT., MAY 6</b></p> <p><b>FRI., MAY 12</b> 7:30PM</p> <p><b>SAT., MAY 19</b> SAT., MAY 20</p> <p><b>SUN., MAY 21</b> 7:00PM</p> <p><b>FRI., MAY 26</b> 7:00PM</p> <p><b>FRI., JUNE 2</b> 7:00PM</p> <p><b>SAT., JUNE 10</b> 7:30PM</p> <p><b>THUR., JUNE 15</b> WED., JUNE 28</p> <p><b>SAT., JULY 8</b></p> <p><b>SAT., JULY 22</b> &amp; JULY 23</p> <p><b>FRI., AUG. 25</b></p>	<p><b>ALABAMA</b> <i>Head McCoy</i></p> <p><b>LYNYRD SKYNYRD</b> <i>TIESLA &amp; BLOODLINE</i></p> <p><b>LITTLE TEXAS/TIM MCGRAW</b> <i>BLACKHAWK</i></p> <p><b>BOSTON</b> <i>YOUNG SCHOLZ, BRAD PULP</i></p> <p><b>PEARL COASTO, BARRY PHIL, DAVID SIKES, CUSLY SMITH</b> <i>LAWN TICKETS \$12.50*</i></p> <p><b>TED NUGENT/BA CONANT</b></p> <p><b>KEVINN</b> <i>30 YEAR LAWN 30'S</i> <b>THRU THU SATURDAY APRIL 22</b></p> <p><b>PIRATES</b> <i>3 SOLD OUT!</i></p> <p><b>TOM PETTY</b> <i>AND THE HEARTBREAKERS</i> <b>TAI MAHAL</b></p> <p><b>OLDIES</b> <i>183 60'S SUMMER SPECTACULAR</i></p> <p><b>YOUNG MAHE, TWILER</b> <i>HANDSON F&amp;B &amp; DODGE, BARRY PHOENIX, BAKE LINDAY</i></p> <p><b>YANNI</b> <i>PERFORMING WITH HIS SYMPHONY ORCHESTRA</i></p> <p><b>REGGAE SUNSLASH '95</b> <i>THRU 50'S 11PM-11PM</i></p> <p><b>ARMAD, DENZEE</b> <i>BLOWN, WALKMAN</i> <b>SOUL &amp; BARRY MOORE</b></p> <p><b>SANDI PATTY</b> <i>WITH THE SAINT LOUIS SYMPHONY</i></p> <p><b>GROUPS CALL 226-4128</b></p> <p><b>VAN HALEN</b></p> <p><b>CHICAGO</b> <i>LITTLE RIVER BAND</i></p>
--	---

**SHOW & TICKET INFORMATION - RIVERPORT HOTLINE 314-965-1800**

Reserve Amphitheatre:
TKT151 N001

Starboard Room & Fountains:
15 Shocks, 1500 Club, Bar, Hot Spot, Sports, Westport Playhouse

**CALL DIALTIX (314) 291-7600**

**PRODUCED BY CONTEMPORARY**

(LAST ACCESS)



**SOUTHWEST**

**THE**



Special Assistance needs call: 314-292-9914 (voice) or 314-292-7426 (TDD)

University of Missouri St. Louis

Ris - ing high be - tween two riv - ers hi - sto - ry yet to tell,  
 Dream - ing dreams a - bout to - mor - row as I - 've learned to - day.

## UM-St. Louis has an Alma Mater of its own

by Amy Pierce  
 associate news editor

John Dill, Chairman of Mosby Publishing Co. and member of UM-St. Louis Chancellors council has written the first UM-St. Louis Alma Mater song.

Gretchen Jaspering, Director of Communication at Mosby said, it all began at last year's commencement ceremony. Dill sat on the platform, and remembered what it was like for him to put himself through college and succeed. As he sat on the platform and watched each and every student receive their diploma, he saw pride, joy, and accomplishment. At that time, our University

was 30 years old, and that is when Dill decided it was time for an Alma Mater song.

"For I have looked into your faces and seen America, the hopes, the dreams of all of our people shining in your eyes and I know now for certain that you are the heart of Missouri and your goodness in striving are the sole of our great nation," Dill said about UM-St. Louis students.

Dill, a trained musician wrote the words to the Alma Mater song, HeartOfMissouri. Diane Ceccarini, Dill's accompanist wrote the music for the song.

The words of the song really express Dill's feelings about UM-

St. Louis students.

*Rising high between two rivers history to tell, Stands an honored Alma Mater our U M S L . Came to seek more understanding for my life to be. Found my need for knowledge answered gratefully by thee. Dreaming dreams about tomorrow as I've learned today. Now this heart deep in Missouri seeks a better way. When at last my journey's over may it's value be, That it honors state and nation but above all thee.*

The Heart of Missouri, UM-St. Louis first Alma Mater song will be sung for the first time by UM-St. Louis choir at the 1995 commencement ceremony.

The Excitement Is Building!

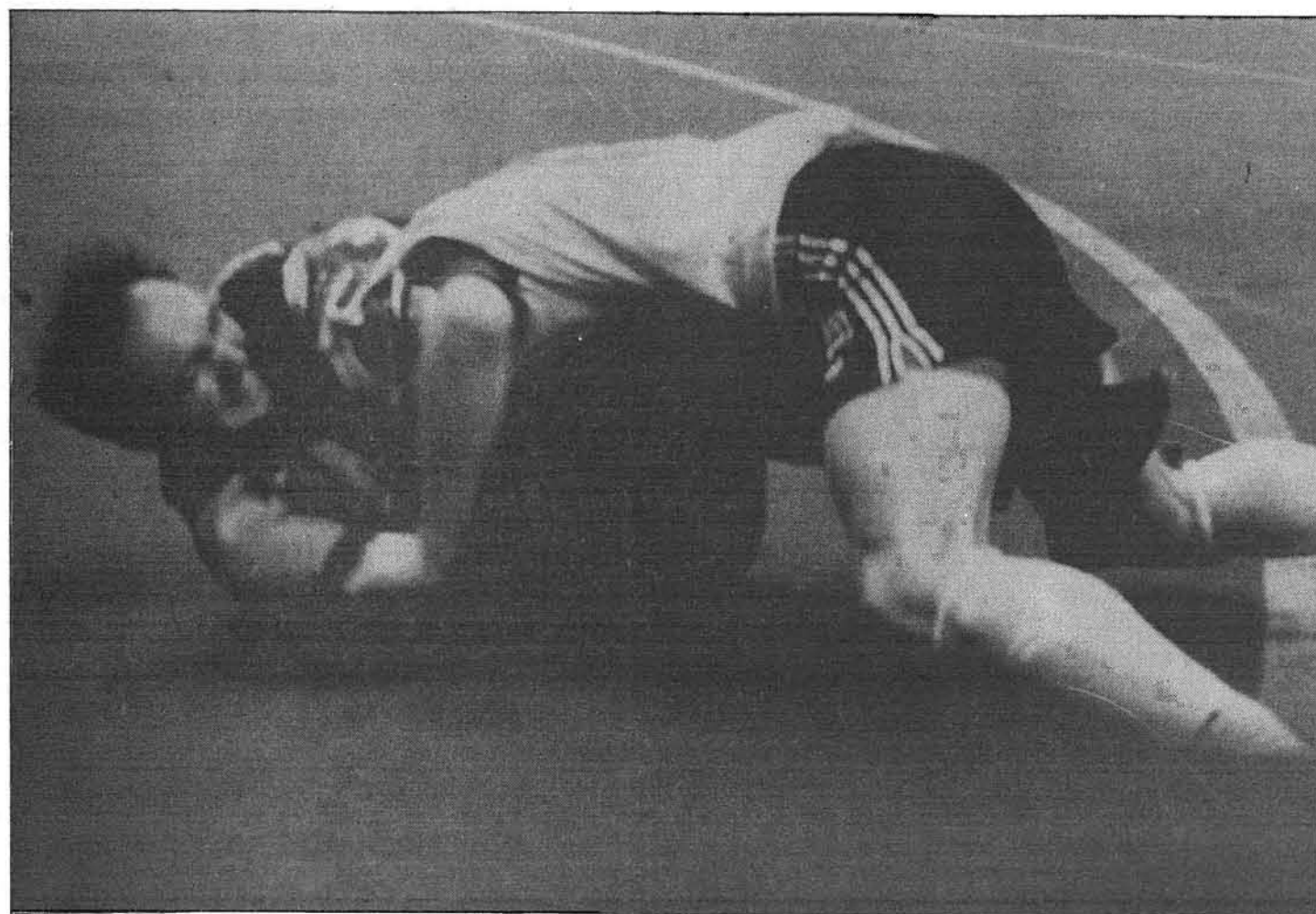
1. Electronically Controlled Limited Access Gates
2. Outdoor Swimming Pool and Jacuzzi
3. 24 Hour On-Site Management & Maintenance Staff
4. Clubhouse with Big Screen TV
5. Choose From 3 Custom Floor Plans
6. Computer/Internet Hookups
7. Campus Police Patrols
8. Outdoor BBQ Pavilion
9. Fully Furnished Units Available
10. All the Comforts of Home!



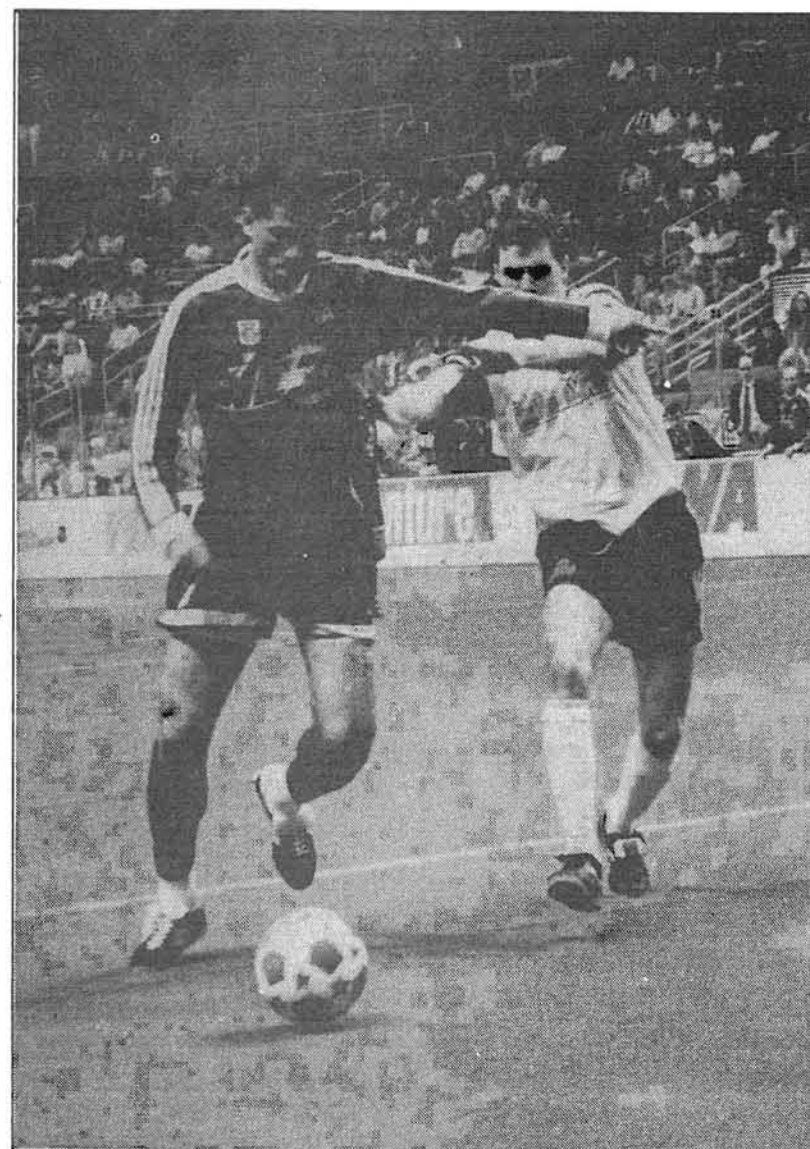
Visit Our On-Campus Information Center  
UM-SL Student Center, Room 266 or Call (314)516-7500



# Take me out to the brawlgame



Mark Moser of the Ambush takes Scoop Staniscic to the turf in a National Professional Soccer League game last week.



Harrisburg's Richard Chinapoo battles an Ambush player for the ball. The Ambush won the game 18-8 to take a 2-0 series lead.

photos: Ken Dunkin

**The Current will give away a pair of tickets to four different winners\* in our Mirthday Drawing on April 26.**

**The concerts include:**

- Lynyrd Skynyrd
- Reggae Sunsplash
- The Beach Boys
- REO Speedwagon w/Cheap Trick

**Come to our booth on Mirthday!**

\*There will be two tickets given away for each of the four shows.

Just when you thought it was safe to go back on campus!

## Watch Out!

*The Current* is having one more issue!

It's One Of The Most Useful Credit Cards On The Planet. *Unless You've Stolen It.* Your MasterCard® is stolen. You panic. You

get angry. You panic some more. Then you call and cancel it. Now the thief is



in possession

of, oh, about seven cents worth of stolen plastic. (Maybe he can use it as a

coaster when he entertains at the hideout.) So relax. You only have

to pay for stuff that *you* bought, and you can even get a new card

the next day.\* It'll be accepted at millions of locations, one of

which must sell wallets.

*MasterCard. It's more than a credit card. It's smart money.™*





# TEXTBOOK BUYBACK

**TURN YOUR TEXTBOOKS INTO CASH.**

## **IMPORTANT BUYBACK INFO**

### **RETAIL**

We will pay up to 50% of the book price providing the textbook:

1-Is being used on this campus.

2-Is needed to fill the bookstore's quota.

3-Is in reusable condition.

*Example:*

You paid \$46.00 for a textbook...

We will pay \$23.00 or 50%

### **WHOLESALE**

For books not needed on this campus but having national demand, up to 35% of the new price may be paid.

Discontinued books are shipped to a wholesaler who recycles them to other colleges and universities where they are needed.

Old editions have no national value.

## **REMEMBER**

Recycling your books is good for the environment and lowers the price of textbooks.

Books with writing or high lighting may have value.

The book prices are determined by the publishers.

Wholesale prices are based on national supply and demand.

Copies in poor condition will be deducted appropriately.

Old editions have no value and cannot be purchased.

## **University Bookstore**

Thurs., May 4, 7:30am-7:30pm

Fri., May 5, 7:30am-5pm

Mon.-Thurs., May 8-11

7:30am - 7:30pm

Fri., May 12, 8am-3pm

## **South Campus/Marillac**

*(in Buyback Shuttle Bus)*

Thurs., May 4, 9:30am-6pm

Fri., May 5, 9:30am-3pm

Mon.-Wed., May 8-10,

9:30am-6pm

Thurs., May 11, 9am-3pm

**OUR GOAL IS TO  
BUY BACK AS MANY  
OF YOUR BOOKS AT  
50% AS POSSIBLE**



# UNIVERSITY BOOKSTORE