

University of Missouri, St. Louis

IRL @ UMSL

UMSLCAB - UMSL's Political Science Millennial
Era Saint Louis Local Curated Area Budgets

Political Science Department

1-1-2007

Financial Report, 2006

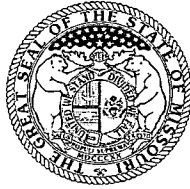
Glasgow Village Street Light Maintenance District

Follow this and additional works at: <https://irl.umsl.edu/cab>

Recommended Citation

Glasgow Village Street Light Maintenance District, "Financial Report, 2006" (2007). *UMSLCAB - UMSL's Political Science Millennial Era Saint Louis Local Curated Area Budgets*. 678.
<https://irl.umsl.edu/cab/678>

This Book is brought to you for free and open access by the Political Science Department at IRL @ UMSL. It has been accepted for inclusion in UMSLCAB - UMSL's Political Science Millennial Era Saint Louis Local Curated Area Budgets by an authorized administrator of IRL @ UMSL. For more information, please contact marvinh@umsl.edu.



SUSAN MONTEE, CPA

Missouri State Auditor

April 17, 2007

Frances Russell, Treasurer

~~Glasgow Village Street Eight District~~

St. Louis County

607 Shepley Road

St. Louis, MO 63137

Fiscal Period: One Year Ended December 31, 2006 ✓

Dear Ms. Russell:

In accordance with Section 105.145, RSMo, we acknowledge receipt of the financial report of your political subdivision for the above-described fiscal period.

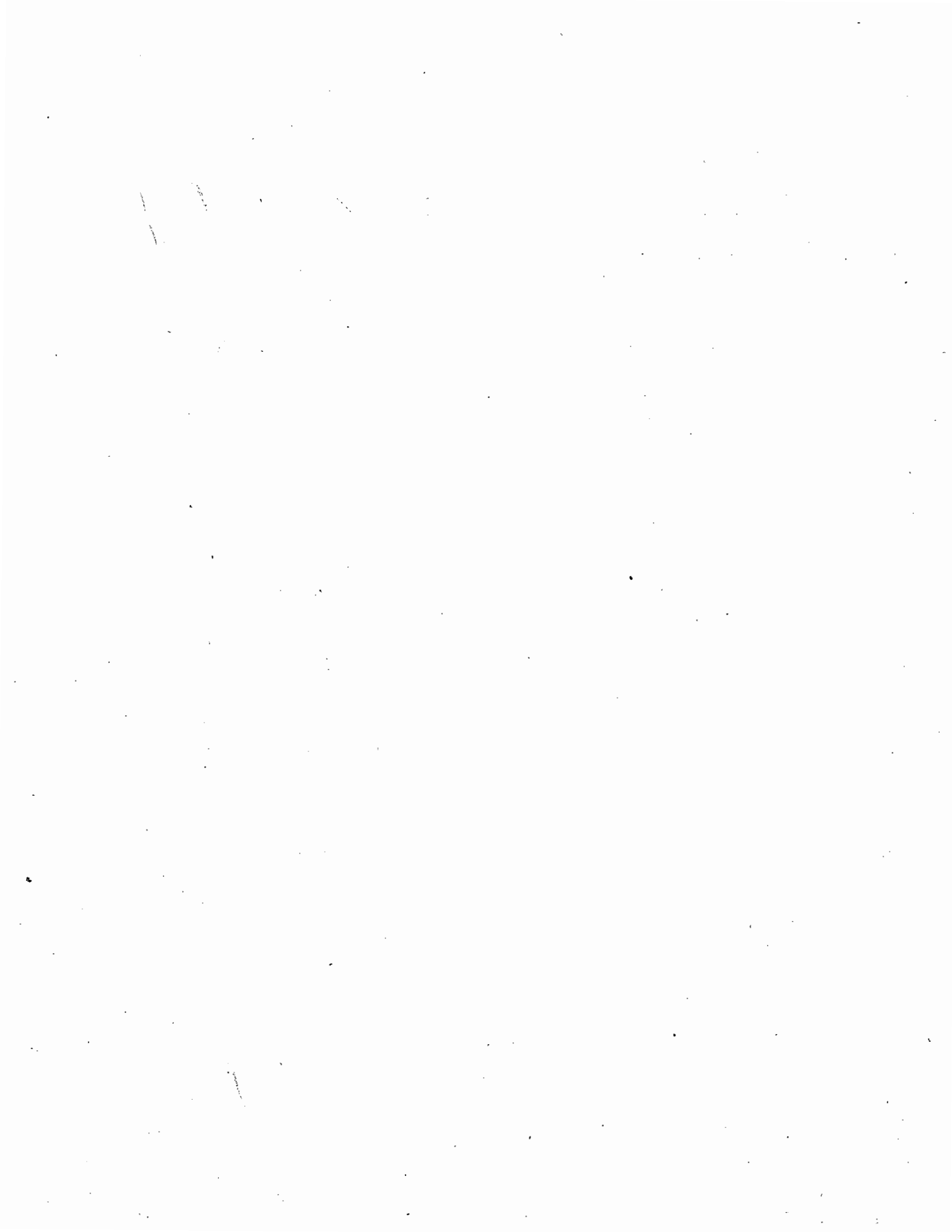
Thank you for your cooperation in sending this information.

Sincerely,

SUSAN MONTEE, CPA
STATE AUDITOR

A handwritten signature in cursive script that reads "Judy Buerky".

Judy Buerky
Local Government Analyst



MAR 23 2007

(Political Subdivision Name)

14-096-0005
Trustees
Glasgow Village Street Light Dist
607 Shepley Road
St. Louis, MO 63137-0000

(Address)

(Telephone Number)

(Email Address)

CERTIFICATION

I FRANCES RUSSELL Treasurer of
(Name - please print) (Title)

GLASGOW Vg STREETLIGHT DIST of ST. LOUIS do attest, under oath, this
(Political subdivision) (County)

report is a true and accurate account of all financial transactions for the year ended 12 31 06
(month, day & year)

Signature Frances Russell

Subscribed and sworn to before me this 9TH day of March, 2007.

Ruby Kelly
(Notary public signature)



(Notary seal)

My Commission Expires: June 26, 2009

Financial Statement Summary

For the Year Ended _____

	Total All Funds	General Fund	Fund	Fund	Fund
Beginning Balance	\$ _____	\$ _____	\$ _____	\$ _____	\$ _____
Total Receipts	_____	_____	_____	_____	_____
Total Disbursements	_____	_____	_____	_____	_____
Ending Balance	\$ _____	\$ _____	\$ _____	\$ _____	\$ _____

Sturgeon V. P. Knight District

Prepared By	Initials	Date
Approved By		

© WILSON JONES G7204 GREEN 7204 BUFF 4/15 2006

2 3 4

1	Description	2006 CHK	DEBIT	CREDIT	BALANCE
1	1/20/06 Balance Forward				8048603
2	1/10/06 Ameren WE	1285	1960.29		1960.29
3	Lights 10/2/05 - 1/10/06				7877514
4	(501.16, 623.15, 835.95)				
5	2/10/06 Ameren WE	1289	1960.89		1960.89
6	1/10 - 2/8/06 Lights				7681545
7	(501.16, 623.15, 835.95)				
8	2/23/06 DEPOSIT of 1/25/06			2649.61	2649.61
9	ST LOUIS City				7771502
10	DIRECTOR OF REVENUE				
11	4/29/05 DEPOSIT of 1/20/06			2445.72	2445.72
12	ST LOUIS City DR of REV				5190884
13	3/8/06 DEPOSIT of 2-6-09			911.50	911.50
14	ST LOUIS COUNTY				8282065
15	DIRECTOR OF REVENUE				
16	3/8/06 VOID VOID VOID	12810			VOID
17	JACK RUSSELL	1221			5000
18	Light Duty Mtg 3/5				8277065
19	3/5/06 JAMES RUSSELL				5000
20	Light Duty Mtg 2/5	1222			8272065
21	3/25/06 DEPOSIT of 3/1/06			1490.17	1490.17
22	ST LOUIS City				8421382
23	DIRECTOR OF REVENUE				
24	3/18/06 Ameren WE				
25	Lights (501.16, 623.15, 835.95)	1293	1960.29		1960.29
26	2/5 - 3/9/06				8225353
27	4/1/06 JACK RUSSELL	1294	5000		5000
28	Light Duty Mtg (APR)				8220333
29	FRANCES RUSSELL	1295	5000		5000
30	Light Duty Mtg (APR)				8215333
31	4/25/06 Ameren WE	1296	1960.29		1960.29
32	Lights (501.16, 623.15, 835.95)				no mtg
33	3/29/06 - 4/7/06				8019364
34	5/2/06 Ameren WE	1297	1960.29		1960.29
35	Lights (501.16, 623.15, 835.95)				no mtg
36	4/7 - 5/8/06				
37	6/22/06 Ameren WE 5/8 - 6/7/06				
38	Lights (501.16, 623.15, 835.95)	1298	1960.29		1960.29
39	6/20/06 DR. O. Mtg				no mtg
40					7627266

St. Louis City Light Department

Year 2006

	Initials	Date
Prepared By		
Approved By		

© WILSON JONES

G7204 GREEN 7204 BUFF

1	2	3	4	5	6	7	8	9	10	11	12	13	14	15	16	17	18	19	20	21	22	23	24	25	26	27	28	29	30	31	32	33	34	35	36	37	38	39	40
Description		GL #	Debit	Credit	Balance																																		
	Balance forward					76,214.68																																	
6/30	Deposit of 5/3/06			89,874		166,088.68																																	
	St Louis Cnty Director of Revenue																																						
6/30	Deposit of 6/1/06			10,873.31		176,961.99																																	
	St Louis Cnty Director of Revenue																																						
7/12	Deposit of 7/10/06			7,391.8		184,353.79																																	
	St Louis Cnty Director of Revenue																																						
7/17	Frank Russell	1299	5.00			179,353.79																																	
	Lights West Mtg July																																						
	Manly Kay Trudeau	1300	5.00			174,353.79																																	
	Lights West Mtg July																																						
	James Russell	1301	5.00			169,353.79																																	
	Lights West Mtg Jul																																						
7/25	Ameren UE	1302	19,602.9			149,750.89																																	
	Lights 6/7-7/7/06																																						
	501.16, 423.12, 835.95																																						
8/1/06	Ameren UE	1303	19,602.9			130,147.99																																	
	Lights 7/7-8/1/06																																						
	501.16, 623.12, 835.95																																						
8/1/06	Deposit of 7/10/06			7,391.8		137,539.79																																	
	St. Louis Cnty Dir. of Rev.																																						
8/15	City of Va Tax office	1304	2,500.00			135,039.79																																	
	2006 property tax rates																																						
8/30	Manly Kay Trudeau Aug	1306	5.00			130,034.79																																	
	Frank Russell Sept	1307	5.00			125,034.79																																	
	James Russell Sept	1308	5.00			120,034.79																																	
9/05	Suburban Amers. Ad. 8/06	1309	1,836.00			118,198.79																																	
9/19	Ameren UE	1309	19,063.4			99,135.39																																	
	LIGHTS 8/17-9/6/06																																						
	(501.16, 623.12, 836.00)																																						
9/20	Frank Russell Sept	1310	5.00			94,135.39																																	
9/20	Manly Kay Trudeau " "	1311	5.00			89,135.39																																	
9/20	FRANK'S RUSSELL " "	1312	5.00			84,135.39																																	
9/20	Suburban Amers. Ad. 9/06	1313	19,650.00			64,485.39																																	
9/20	FRANK'S RUSSELL	1314	10.24			54,245.15																																	
	POSTAGE See attached																																						

Wed 9/20 7 PM

PAGE II

Blasgow Vg Light District Year 2006

	Initials	Date
Prepared By		
Approved By		

© WILSON JONES G7204 GREEN 7204 BUF

1	2	3	4	5	6	7	8	9	10	11	12	13	14	15	16	17	18	19	20	21	22	23	24	25	26	27	28	29	30	31	32	33	34	35	36	37	38	39	40
Description		chk#	Debit	Credit	Balance																																		
	Balance b/fwd					7284441																																	
10/15	Deposit of 9/5/06			63963		63963																																	
	St. Louis County Dr of Rev					7348404																																	
10/15	Deposit of 10/4/06			86549		86549																																	
10/15	St. Louis County Dr of Rev					7434953																																	
10/15	Stephanie Kara City	1315	49000			49000																																	
	3.50 hr @ 140 th a hr.					7385953																																	
	Ameron UEL	1316	196029			196029																																	
	Lights 9/6-10/5/06					7189924																																	
	(501.16, 623.18, 835.95)																																						
11/19	Jack Russell - Oct. Rate	1317	5000			5000																																	
	Mary Kay Anderson Dist	1318	5000			5000																																	
	Thomas Russell Mtg	1319	5000			5000																																	
						7174924																																	
11/16	Deposit of 11/6/06			117023		117023																																	
	St. Louis County Dr of Revenue					7291947																																	
11/19	AMERON UEL	1320	196029			196029																																	
	LIGHTS 10/5-11/3/06					7095918																																	
	(501.16, 623.18, 835.95)																																						
12/3	Jack Russell	1321	5000			5000																																	
	Wel Mtg					7040918																																	
	Mary Kay Anderson	1322	5000			5000																																	
	Dist Mtg					7040918																																	
	Thomas Russell	1323	5000			5000																																	
	Wel Mtg					7035918																																	
12/29	AMERON UEL	1324	196029			196029																																	
	Lights 12/15-12/26/06					6539889																																	
	(501.16, 623.18, 835.95)																																						
12/29	Deposit 11/15/06			107202		107202																																	
	St. Louis County Dr of Rev.					6947091																																	
	DEPOSIT 10/07			192453		192453																																	
	ST LOUIS County DR. of Rev					7139544																																	
	DEPOSIT 12/11/06			1296860		1296860																																	
	ST LOUIS County DR. of Rev					8436404																																	
	DEPOSIT 12/27/06			212291		212291																																	
	ST LOUIS County DR. of Rev					8648695																																	
	DEPOSIT 12/19/06			253670		253670																																	
	ST LOUIS County DR. of Rev					8902365																																	
ENDING Balance 12/30/06						<u>8902365</u>																																	

Francis Russell, Treasurer 3/5/07
PAGE 111

St. Louis Vg Right District

Initials Date
 Prepared by
 Approved By

© WILSON JONES 67204 GREEN 7204 BUFF 4/2 2006

2 3 4

#	Description	2006 CH#	DEBIT	CREDIT	BALANCE
1	1/20/05 Balance fwd				8093603
2	1/10/06 Ameren WE	1288	1960.29		1960.29
3	lights 12/7/05 - 1/10/06				7877574
4	(501.16, 623.18, 835.95)				
5	2/10/06 Ameren WE	1289	1960.89		1960.89
6	1/10 - 2/8/06 Lights				7681545
7	(501.16, 623.18, 835.95)				
8	2/20/06 DEPOSIT of 1/5/06			2649.61	2649.61
9	ST LOUIS CNTY				7946508
10	DIRECTOR OF REVENUE				
11	2/27/06 DEPOSIT of 1/20/06			2449.77	2449.77
12	ST LOUIS CNTY DR OF REV				8190384
13	3/8/06 DEPOSIT of 2/6/06			911.80	911.80
14	ST LOUIS COUNTY				8282065
15	DIRECTOR OF REVENUE				
16	3/8/06 VOID VOID VOID	1290	-	-	VOID
17	Jack Russell	1291	-	-	5000
18	Light Dist Mtg 2/5				8272065
19	5/5/06 Susan Russell				5000
20	Light Dist Mtg 2/5	1292			8272065
21	3/20/06 DEPOSIT of 3/1/06			1490.17	1490.17
22	ST LOUIS CNTY				-8421382
23	DIRECTOR OF REVENUE				
24	3/25 Ameren WE				
25	lights (501.16, 623.18, 835.95)	1293	1960.29		1960.29
26	2/8 - 3/9/06				8225353
27	4/17/06 JACK RUSSELL	1294	5000		-5000
28	Light Dist Mtg (APR)				8220333
29	FRANCES RUSSELL	1295	5000		5000
30	Light Dist Mtg (APR)				8215333
31	4/25/06 Ameren WE	1296	1960.29		1960.29
32	lights (501.16, 623.18, 835.95)				no mtg
33	3/29/06 - 4/7/06				8019964
34	5/24/06 Ameren WE	1297	1960.29		1960.29
35	lights (501.16, 623.18, 835.95)				no mtg
36	4/7 - 5/8/06				7823295
37	6/20/06 Ameren WE 5/8 - 6/7/06				
38	lights (501.16, 623.18, 835.95)	1298	1960.29		1960.29
39	6/20/06 NO mtg				no mtg
40					7627266

Blasgow by Right District

	Initials	Date
Prepared By		
Approved By		

© WILSON JONES G7204 GREEN 7204 BUFF

Year 2002

	Description	CR #	Debit	Credit	Balance
1	Balance fwd				76274.69
2	Deposit of 5/3/00			89874	166148.69
3	St Louis Cnty Director				
4	of Revenue				
5	Deposit of 4/1/00			100731	266879.69
6	St Louis Cnty Director				
7	of Revenue				
8	Deposit of 7/1/00			79913	346792.69
9	St Louis Cnty Director				
10	of Revenue				
11	7/17 Frank Russell	1299	50.00		296742.69
12	Light Note Mtg July				
13	Mary Kay Trudeau	1300	50.00		296242.69
14	Light Note Mtg July				
15	Frank Russell	1301	50.00		295742.69
16	Right Dist Mtg July				
17	7/18 Ameren UE	1302	196029		99141.69
18	Lights 6/7-7/7/00				
19	501.16, 623.15, 235.95				
20	8/1/00 Ameren UE	1303	196029		-106887.31
21	Lights 7/7-8/7/00				
22	501.16, 623.15, 235.95				
23	8/1/00 Deposit of 7/10/00			73918	33296.69
24	St. Louis Cnty Dir. of Rev.				
25	8/15 City of Va Tax off. 00	1304	250.00		33046.69
26	2000 prop. tax rates				
27	8/30 Mary Kay Trudeau Aug	1306	50.00		32546.69
28	Frank Russell	1307	50.00		32046.69
29	James Russell	1308	50.00		31546.69
30	9/01 Suburban Amex	1309	183.60		31363.09
31	121 Public Wkg Ad 8/00				
32	9/18 Ameren UE	1309	190634		-159270.90
33	LIGHTS 8/17-9/16/00				
34	501.16, 623.17, 236.00				
35	9/20 Frank Russell Sept Mtg	1310	50.00		-159770.90
36	9/20 Mary Kay Trudeau " "	1311	50.00		-160270.90
37	9/20 FRANK'S RUSSELL " "	1312	50.00		-160770.90
38	9/30 Suburban Amex	1313	19650		-180420.90
39	Ad 7/12/00				
40	9/30 FRANK'S RUSSELL	1314	1024		-181444.90
	POSTAGE See attached				

Wed 9/20/00

PAGE II

Missouri Light & Heat
Year 2006

Prepared By	Date
Approved By	

© WILSON JONES G7204 GREEN 7204 BUF

	Description	Chk	Debit	Credit	Balance
	Balance b/fwd				72844.41
10/15	Deposit of 10/5/06			639.63	639.63
	ST. LOUIS CNTY DR. of REV				73484.04
10/17	Deposit of 10/4/06			865.49	865.49
10/15	ST. LOUIS CNTY DR. of REV				74349.53
10/15	Stephanie Kay City	1315	49.00		49.00
	3.50 AM @ 14th St. W.				73859.53
	Ameron W/L	1316	196.09		196.09
	Lights 9/4-10/2/06				11899.24
	(501.16, 623.18, 835.95)				
11/19	Jack Russell Out Rate	1317	5.00		5.00
	Mary Kay Russell Dist	1318	5.00		5.00
	Jessie Russell, Mtg	1319	5.00		5.00
11/19	Deposit of 11/6/06			1170.23	1170.23
	ST. LOUIS CNTY DR. of REVENUE				12919.47
11/19	AMERON W/L	1322	196.09		196.09
	LIGHTS 10/5-11/3/06				70959.15
	(501.16, 623.18, 835.95)				
12/19	Jack Russell	1321	5.00		5.00
	W/L Mtg				70909.18
	Mary Kay Russell	1322	5.00		5.00
	Jack Russell				70409.18
	Jessie Russell	1323	5.00		5.00
	W/L Mtg				70359.18
12/19	AMERON W/L	1324	196.09		196.09
	Lights 11/15-12/1/06				65599.89
	(501.16, 623.18, 835.95)				
12/19	Deposit 11/15/06			1072.02	1072.02
	ST. LOUIS CNTY DR. of REV.				64470.91
	DEPOSIT 12/07			1924.55	1924.55
	ST. LOUIS CNTY DR. of REV				71139.54
	Deposit 12/11/06			12965.60	12965.60
	ST. LOUIS CNTY DR. of REV				84364.04
	Deposit 12/27/06			2123.11	2123.11
	ST. LOUIS CNTY DR. of REV				86487.15
	DEPOSIT 12/19/06			2536.70	2536.70
	ST. LOUIS CNTY DR. of REV				89023.85
	ENDING Balance 12/31/06				<u>89023.85</u>

Francis Russell, Treasurer 3/5/07
PAGE 111

North County
 St. Louis, Missouri
 631389998
 2871440216 -0097
 (314)869-0566 03:43:27 PM
 04/20/2006

Product Description	Sales Receipt		Final Price
	Qty	Unit Price	
JEFFERSON CITY MO 65102			\$0.63
First-Class			
3.70 oz.			
Return Rcpt (Green Card)			\$1.85
Certified			\$2.40
Label #:	70053110000213139932		
Issue PVI:			\$4.88

Total: \$4.88
 Paid by:
 Cash: \$20.00
 Change Due: \$15.12

Bill #: 1000331876479
 Clerk: 17
all 1314 FYL 10/24 9/30/06

-- All sales final on stamps and postage.
 Refunds for guaranteed services only.
 Thank you for your business.
 Customer Copy

North County
 St. Louis, Missouri
 631389998
 2871440216 -0095
 (314)869-0566 04:31:17 PM
 08/31/2006

Product Description	Sales Receipt		Final Price
	Qty	Unit Price	
SAINT LOUIS MO 63105			\$1.11
First-Class			
3.70 oz.			
Return Rcpt (Green Card)			\$1.85
Certified			\$2.40
Label #:	70053110000213142987		
Issue PVI:			\$5.36

Total: \$5.36
 Paid by:
 Cash: \$5.36

Bill #: 1000501708241
 Clerk: 08
all 1314 FYL 10/24 9/30/06

All sales final on stamps and postage.
 Refunds for guaranteed services only.
 Thank you for your business.
 Customer Copy