

University of Missouri, St. Louis

IRL @ UMSL

---

Yearbooks

University Archives

---

1-1-1978

## Graduate Record 1978

University of Missouri-St. Louis

Follow this and additional works at: <https://irl.umsl.edu/yearbook>

---

### Recommended Citation

University of Missouri-St. Louis, "Graduate Record 1978" (1978). *Yearbooks*. 31.  
<https://irl.umsl.edu/yearbook/31>

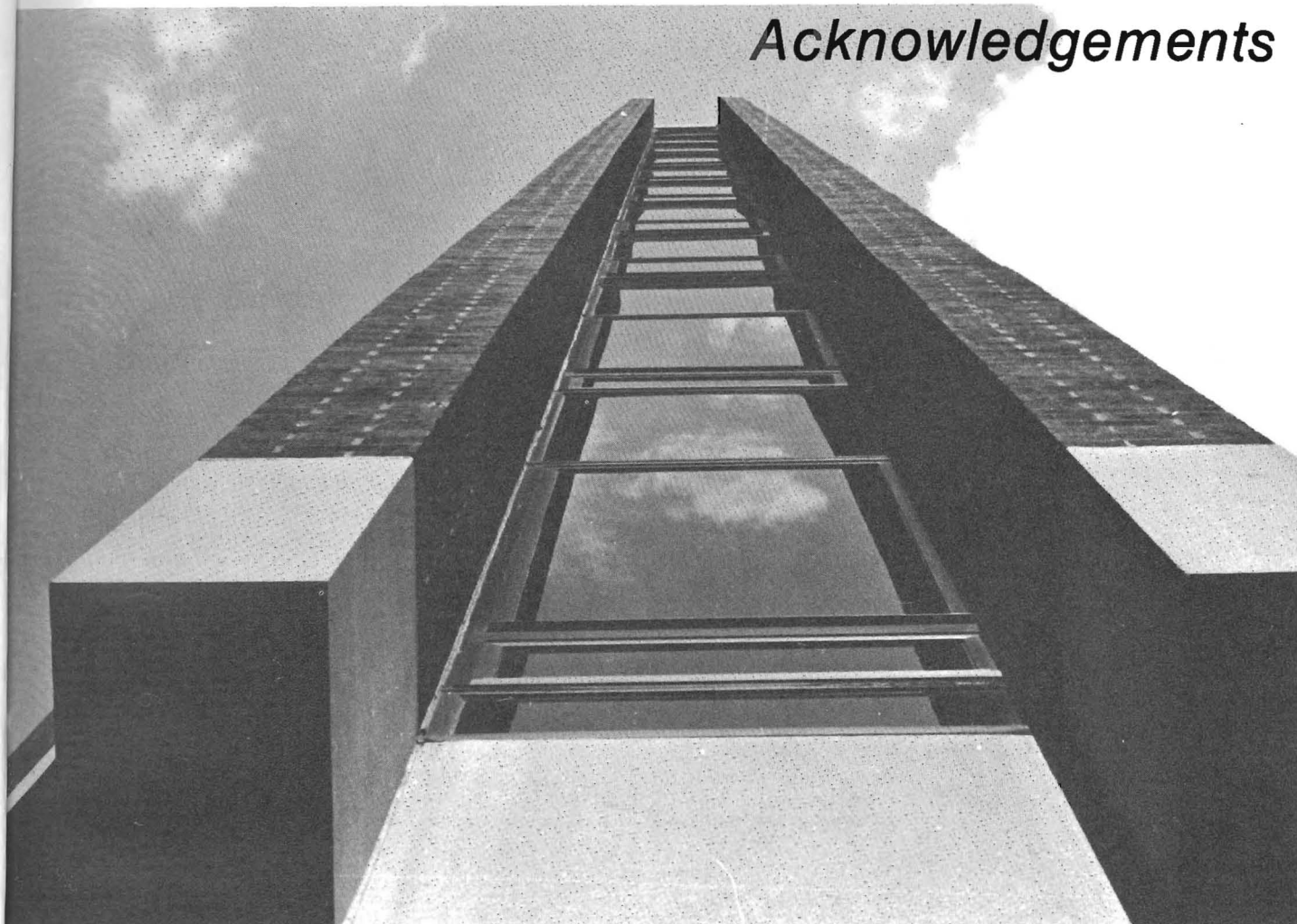
This is brought to you for free and open access by the University Archives at IRL @ UMSL. It has been accepted for inclusion in Yearbooks by an authorized administrator of IRL @ UMSL. For more information, please contact [marvinh@umsl.edu](mailto:marvinh@umsl.edu).

**GRADUATE RECORD 1978**  
**UNIVERSITY OF MISSOURI—ST. LOUIS**  
**Sponsored by Central Council Student Government**





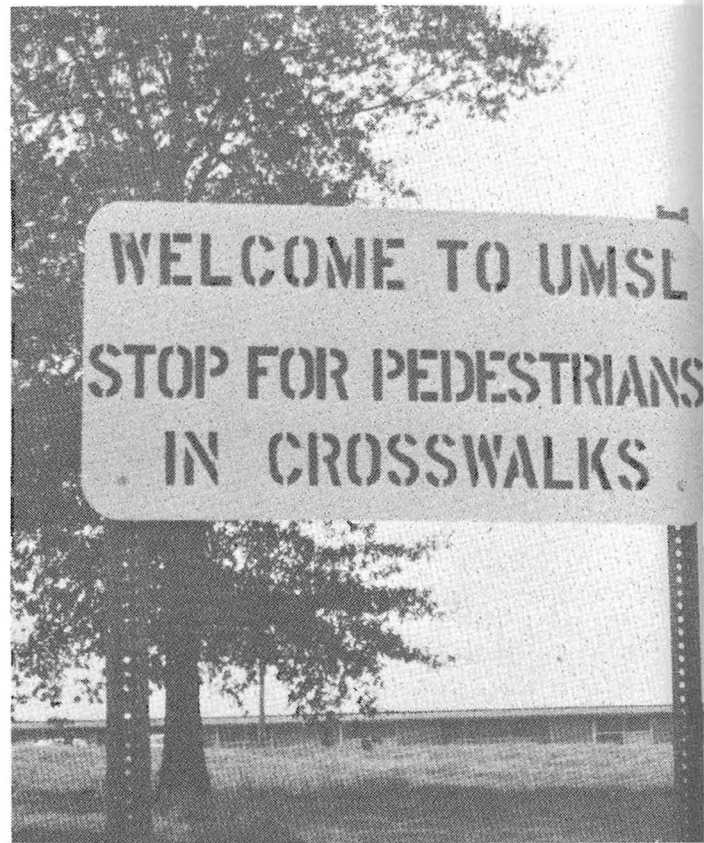
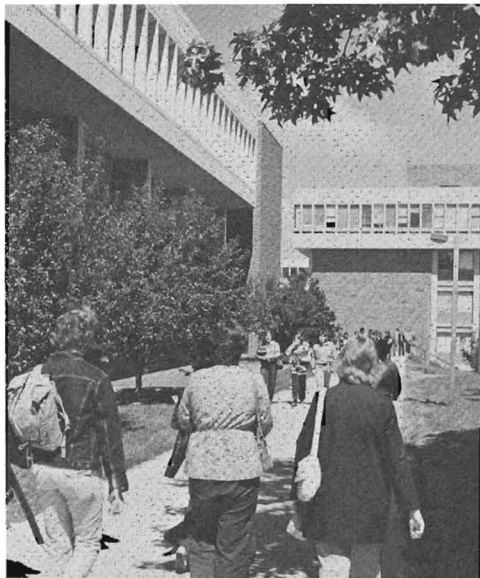
# Acknowledgements



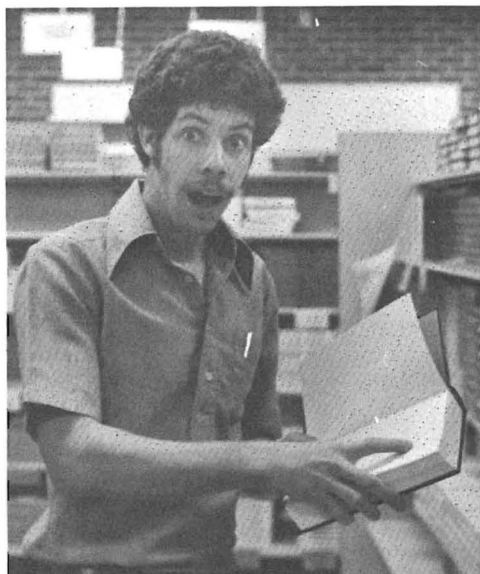
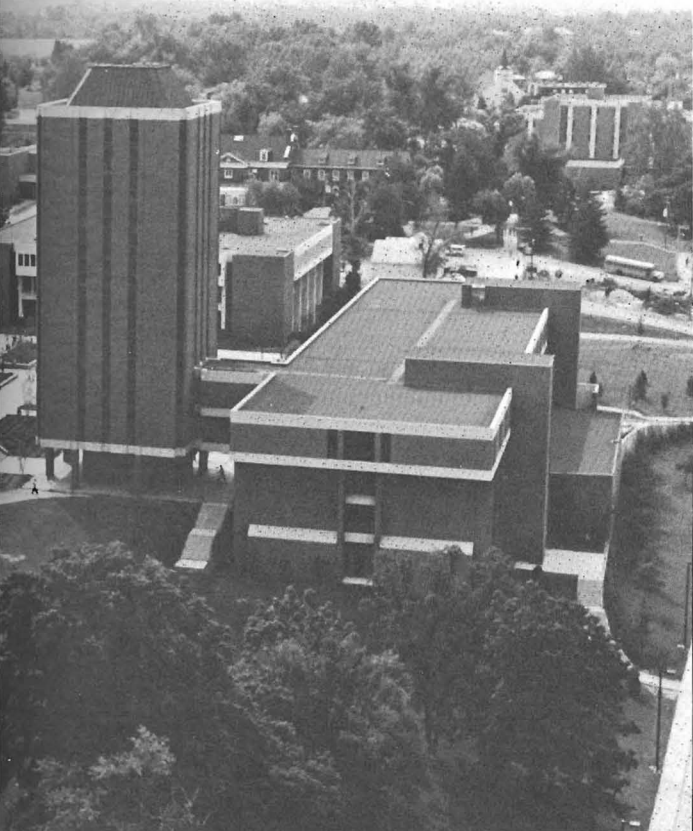
Coordinator—*Jeanne L. Grossman*

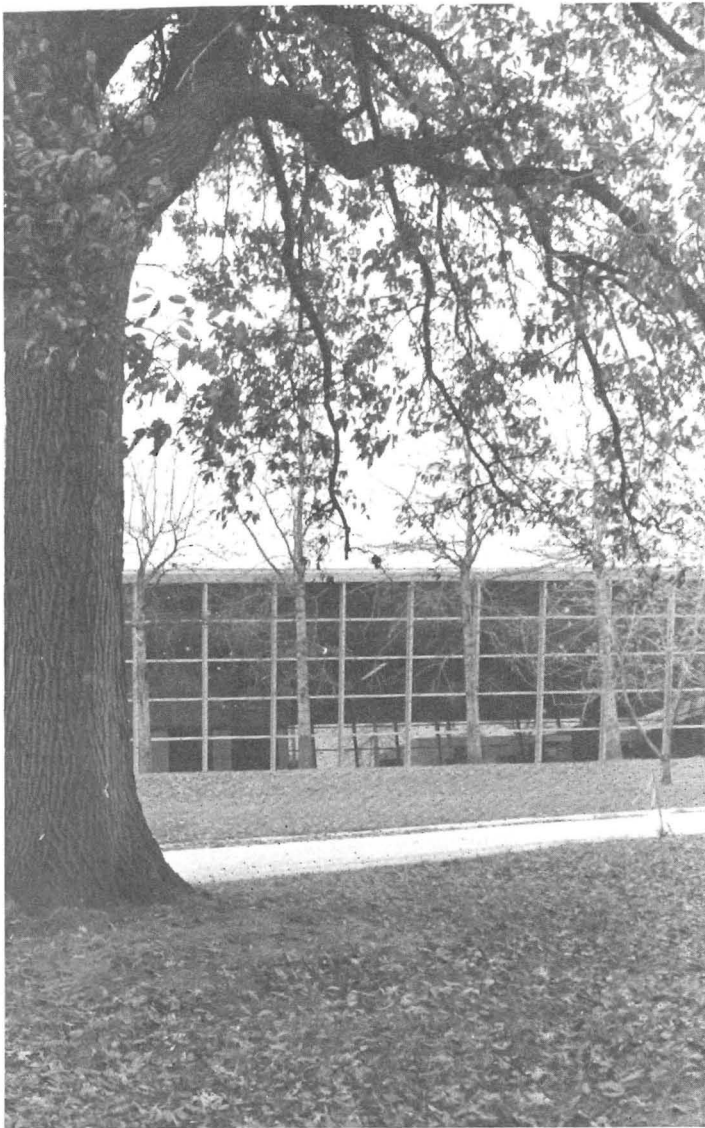
We wish to thank the photographers responsible for the photographs used in this yearbook. The page number their works appear on are after their names: *Mary Bagley*—7; *Liz Craft*—4,5; *Romondo Davis*—4,8,9,10; *Debra Knox Deierman*—2,5,10,13; *Rick Jackoway*—14; *Dale Nelson*—6,10; *J. Scott Petersen*—9; *Sam Smith*—11,12; *Earl Swift*—2; *Jeane Vogel-Franzi*—7,15,16. Our thanks, also to *Ron Edwards* and the U-Center darkroom, and the UMSL *Current* for use of their photo files.

Special thanks to  
*Curt Watts* for his  
encouragement  
and guidance









*The School of Education Library-Marillac.*

## ***The Story Thus Far . . .***

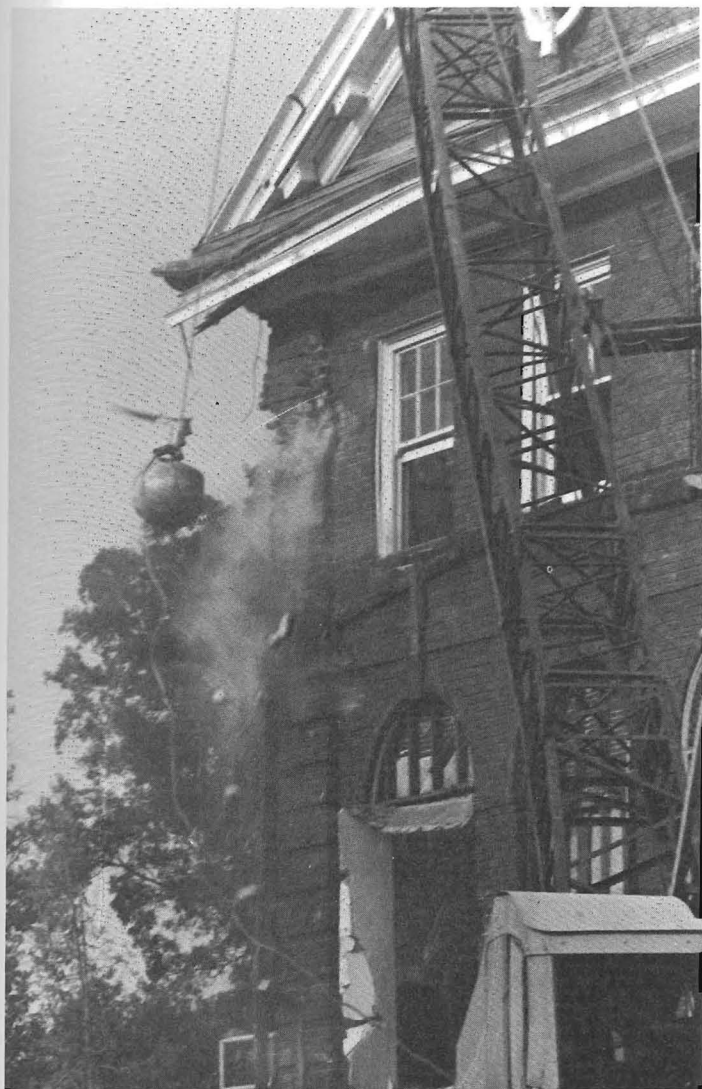
Founded in 1963, UMSL began as a one building campus, built on the site of the old Bellerive Country Club. In the next twelve years, nine additional buildings were constructed. In 1976 the university acquired Marillac, formerly a college of the Daughters of Charity, and in 1978 Governor Joseph Teasdale signed legislation establishing a regional school of optometry on the UMSL campus.

Since the doors of the old Administration Building opened, UMSL has grown to be the second largest University in the state and the largest in St. Louis. What was once the location of an exclusive country club is now an active campus of 12,000 students, faculty, and staff intent on serving the St. Louis community through teaching, research, and extension.





*Student Stephen Platt leading the campaign to save the old Administration Bldg. from demolition.*



*Demolition of the old Administration Bldg., summer, 1977.*





## *Campus Governance*

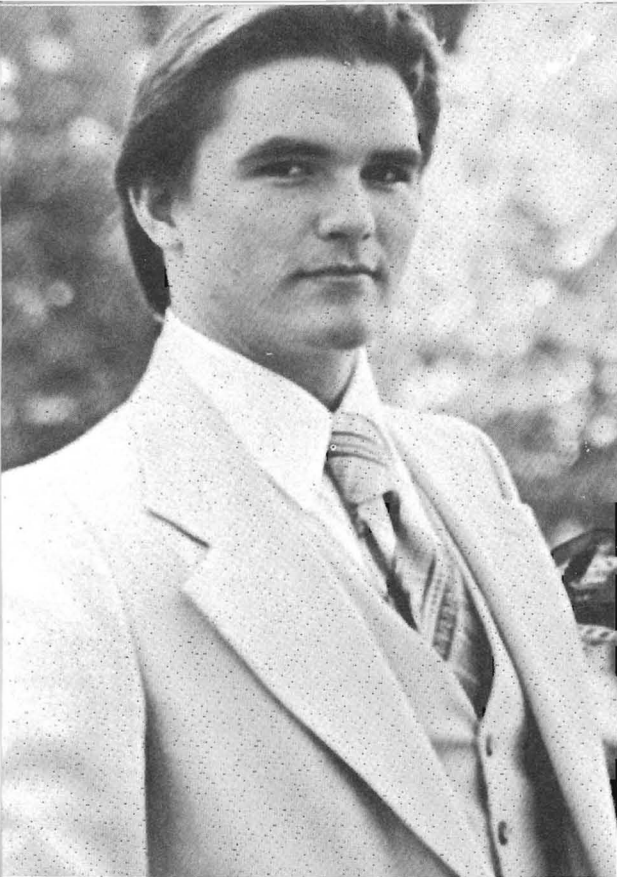
The two primary campus governing bodies, Central Council and the University Senate, encouraged student input in the establishment of new policies and services. Central Council, totally composed of students, provides such student services as a course evaluation booklet, and off-campus housing information. The University Senate, whose membership includes 75 faculty and 25 students, handled important policy decisions like fee restructuring—issues of concern to the entire university community.





Below—Students campaign in the Central Council elections of 1978.  
 Top left P. 4 and top right this page.—Newly elected Student Body President—Paul Free and Vice-President Cortez Lofton.  
 Bottom P. 4—Members of the University Senate at a fall meeting.  
 Bottom this page—Evening students take advantage of the Koffee Klotch sponsored by the evening College council.



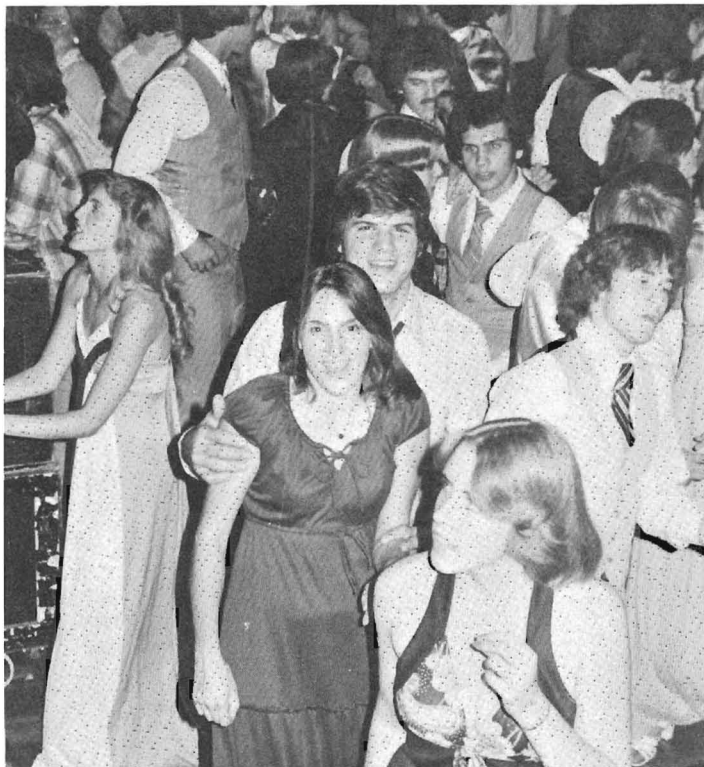


*UMSL's 1977 Homecoming King Joel Bennett*

## Homecoming 1977



*UMSL's 1977 Homecoming Queen Deni Blahos*



*UMSL students enjoy the music of the Younger Brothers at the Homecoming dinner dance.*



*Members of the Alpha Xi Delta Sorority "Clown" around while participating in the Homecoming parade.*





*Floutist Jean Pierre Rampal*



*Speaker Julian Bond*



*Dr. Jean-Michel Cousteau*



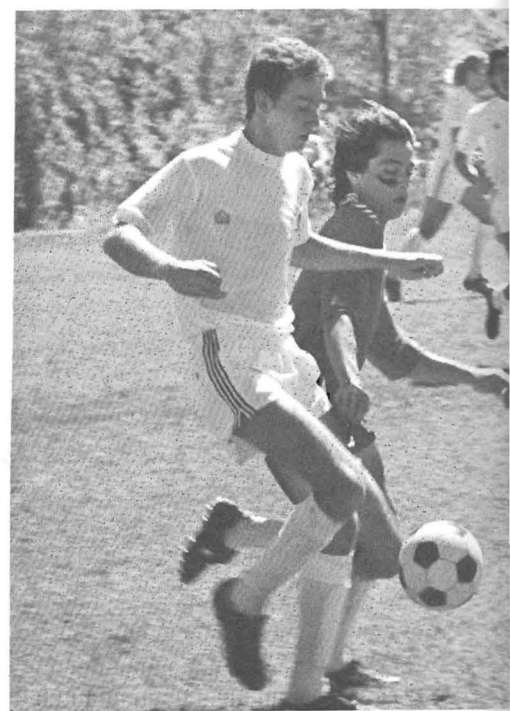
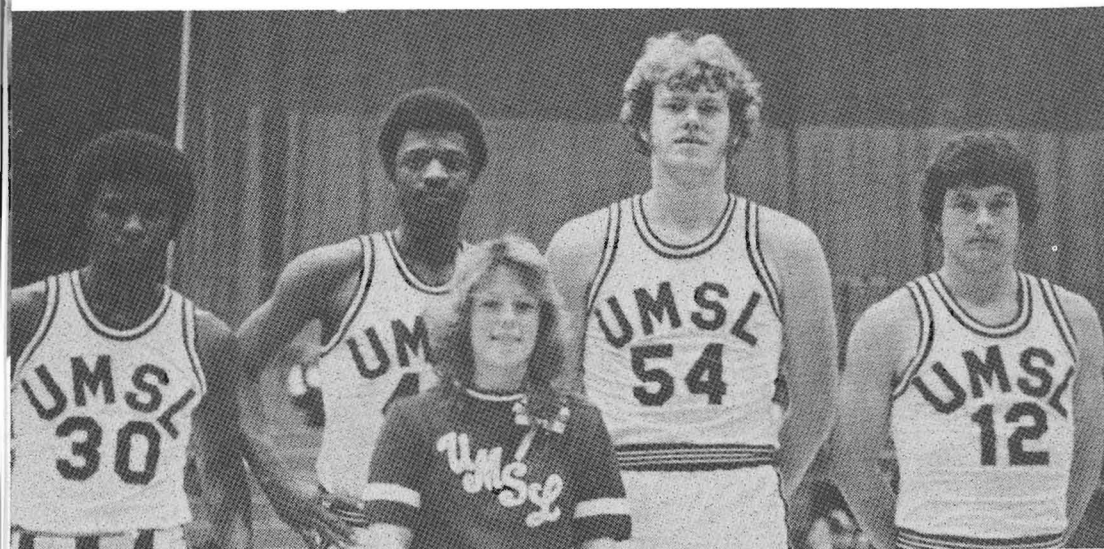
*William Windom in Thurber II*



*The Preservation Hall Jazz Band*



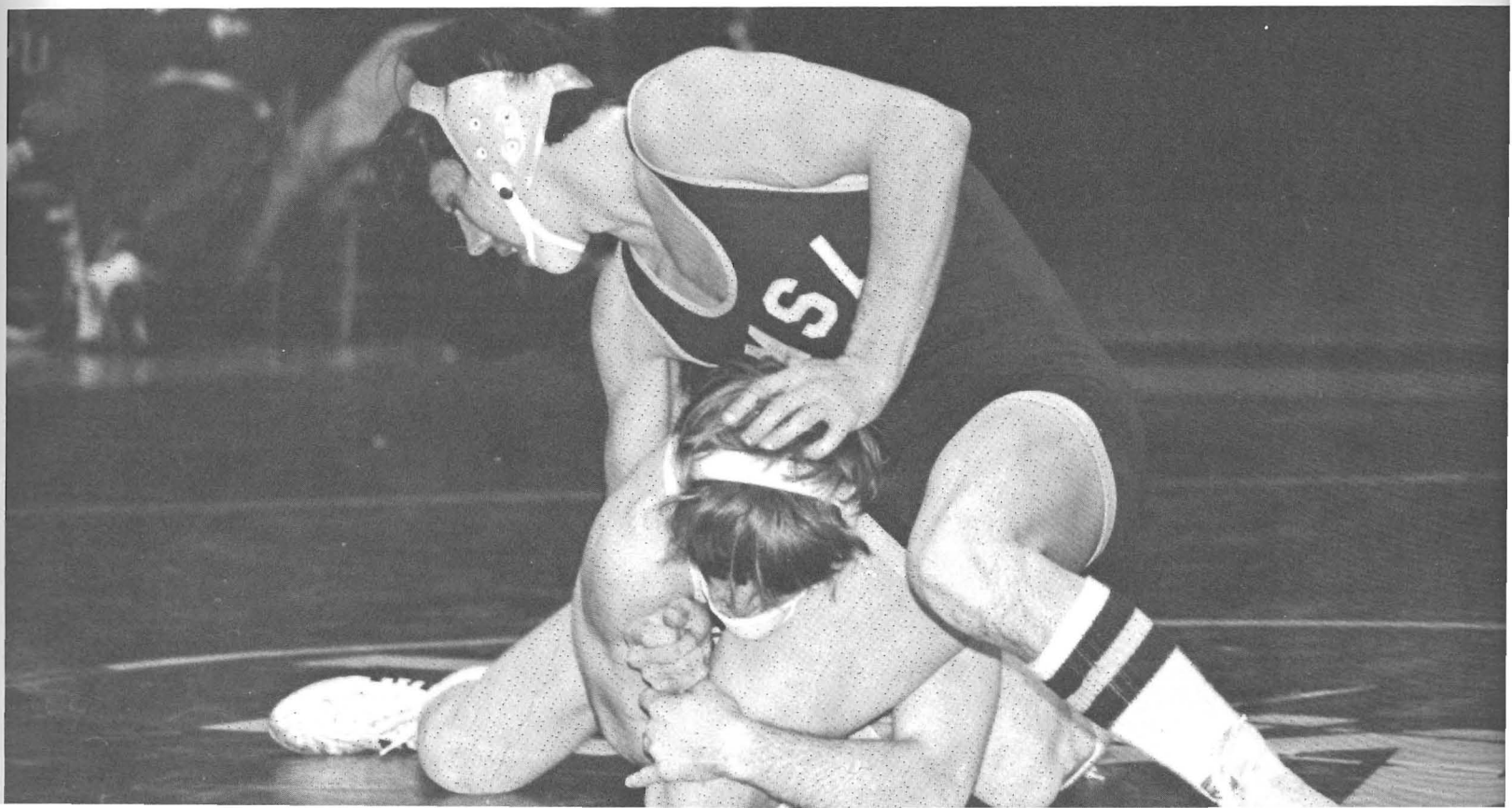
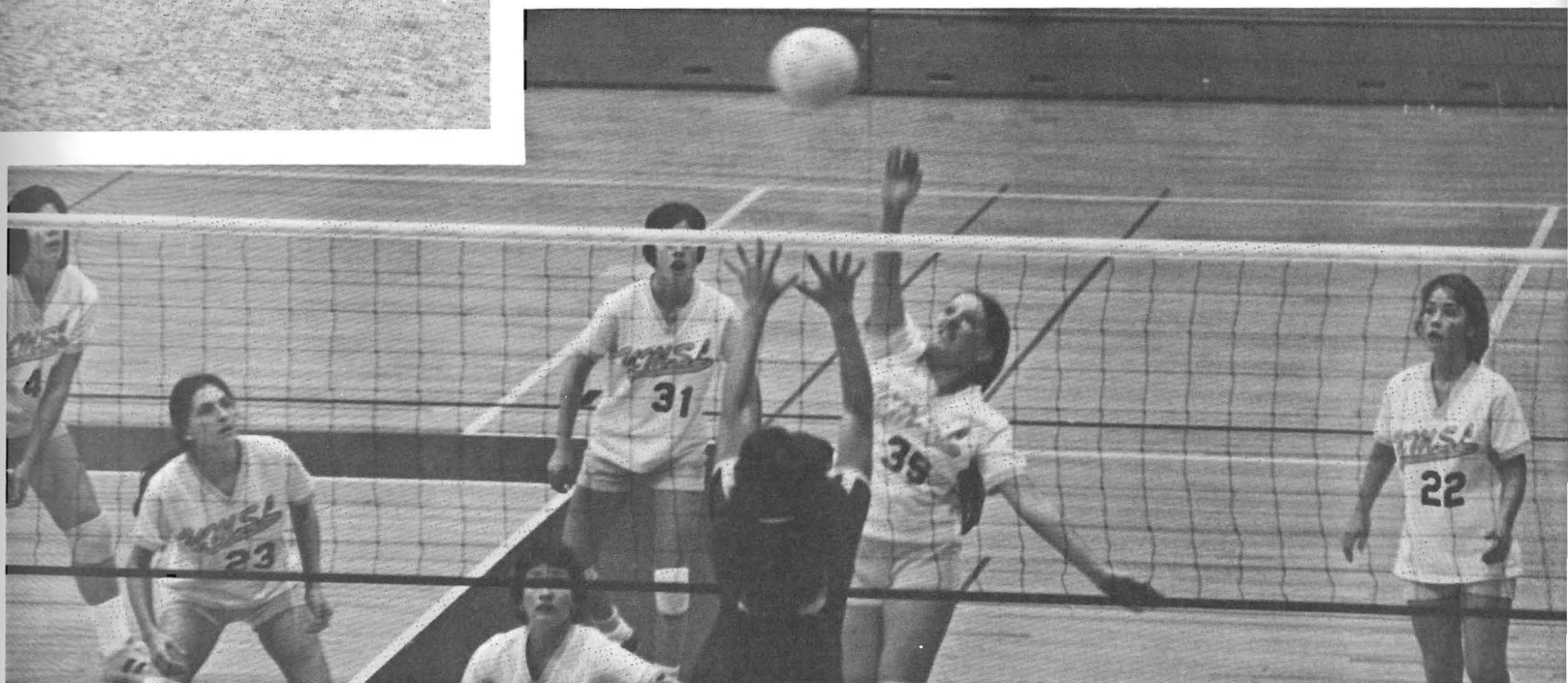
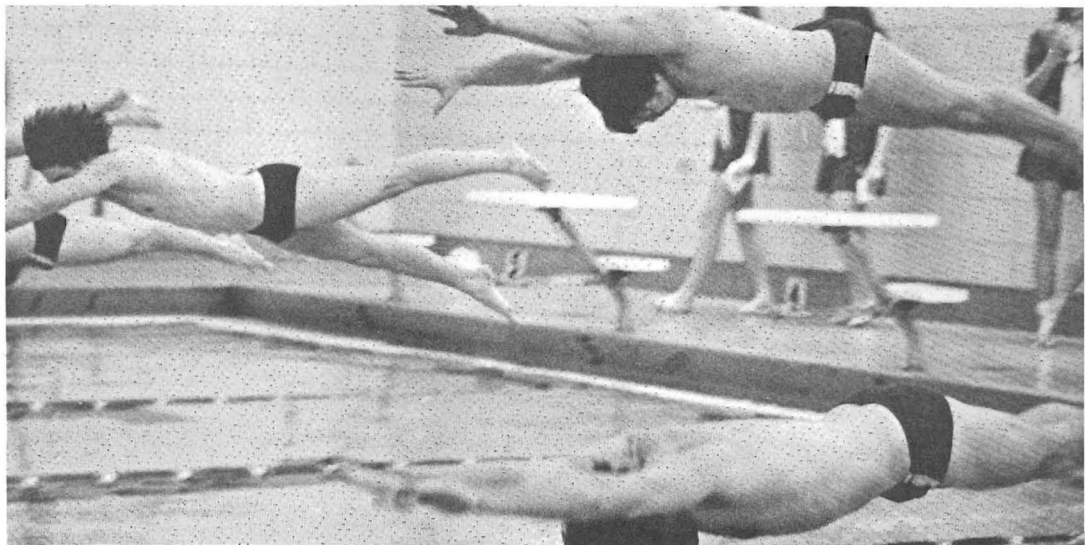
*Speaker Dr. Margaret Mead*



## ATHLETICS







# Greeks



*Co-Winners of a Riverman Rooter award—Pi Kappa Alpha fraternity and Delta Zeta Sorority. The awards were distributed to spirited student groups on their cheering efforts.*

*Members of the Sigma Tau Gamma Fraternity participate in their Bicycle Marathon to benefit Cancer research.*



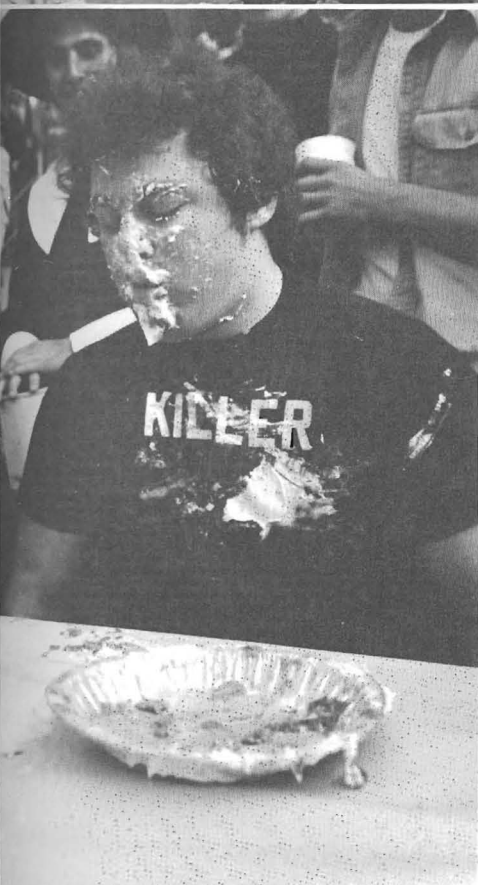
*Intramurals, like flag football, contained intense athletic competition.*







*Students participate in a Pie Eating contest sponsored by the Pi Kappa Alpha fraternity—the proceeds going to benefit St. Vincents Orphanage*



*Killer—The student or the Pie?*

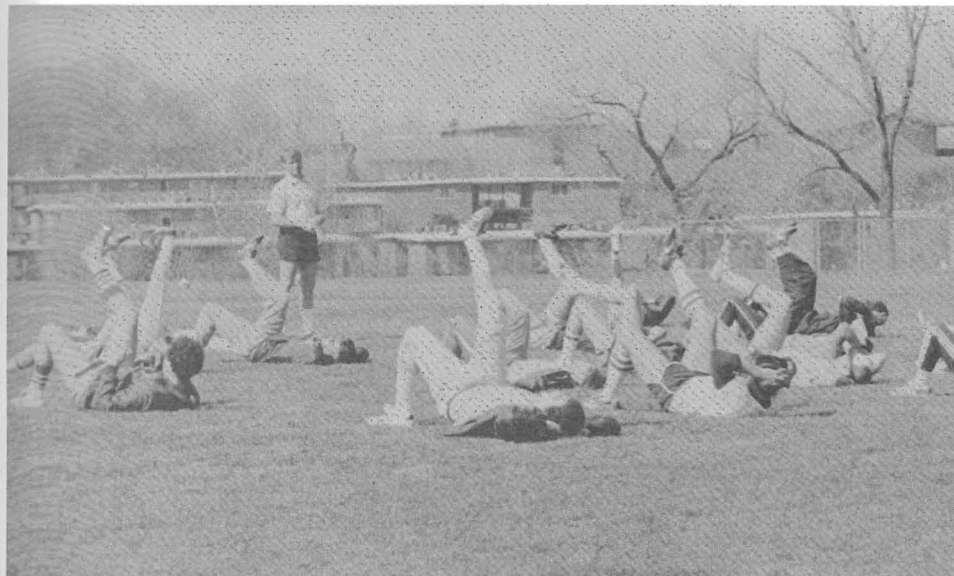
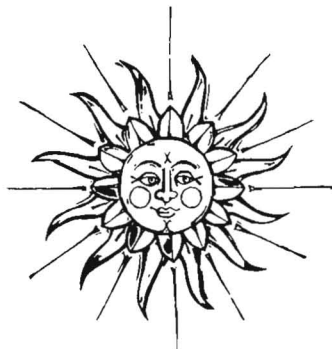
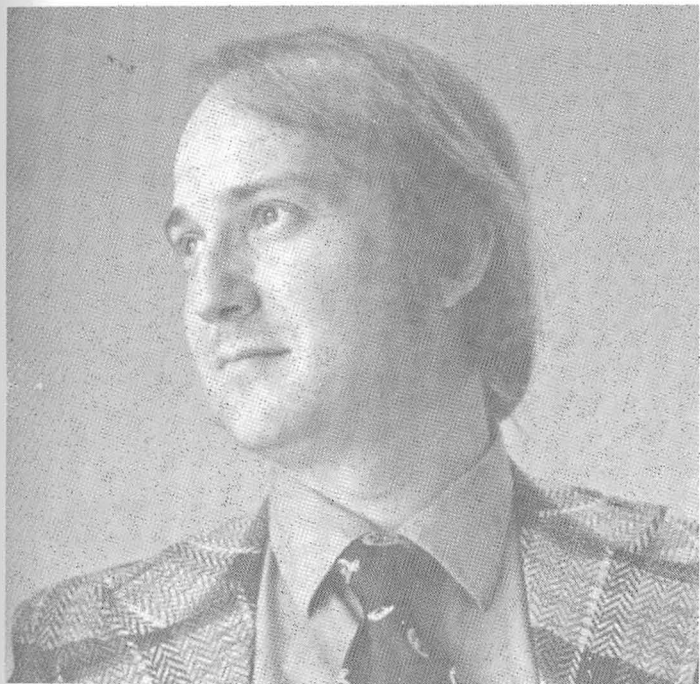


*Interested students participated in Formal Sorority Rush last fall.*





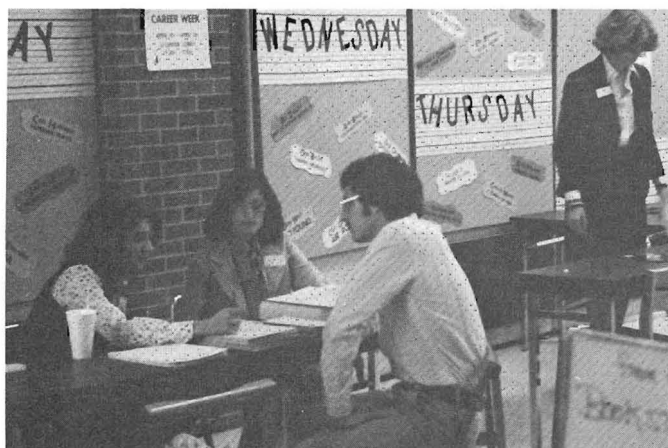




*D.J. "Streiker" played disco tunes weekly for student's dancing pleasure in the U-Center lounge.*



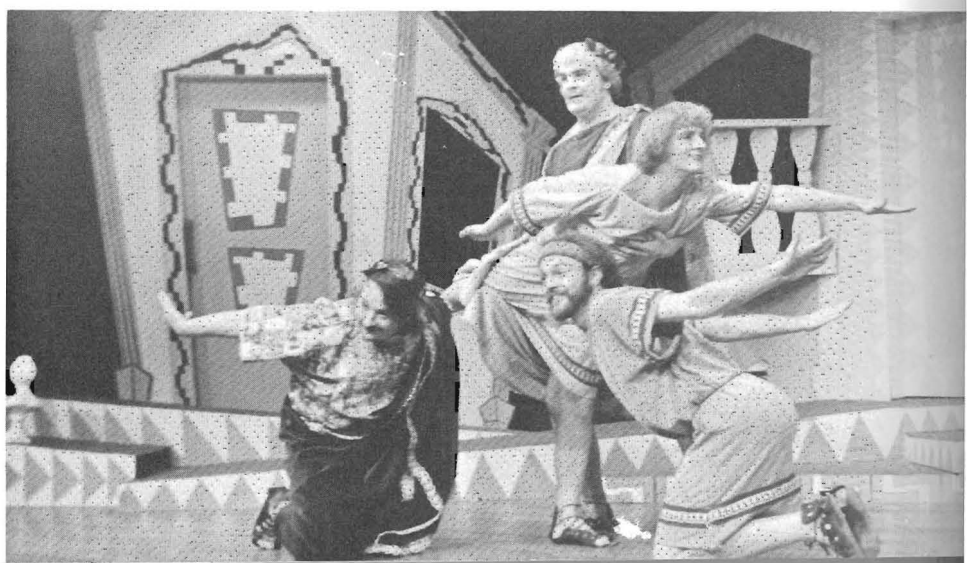
*Career Week—a cooperative venture between the U-Center, Central council, and Mike Dace—Arts and Science Advising.*



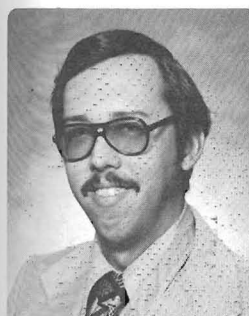
*Joel Bennett portrays Conrad Birdie in the U-Players production of "Bye Bye Birdie".*



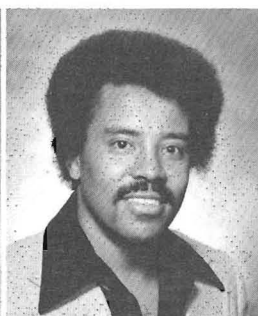
*The U-Players 1977-78 season also produced "A Funny Thing Happened on the Way to the Forum".*



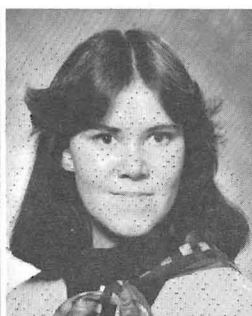




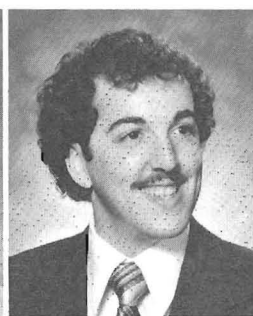
**FREDERICK W. ACKER**  
St. Louis, Mo



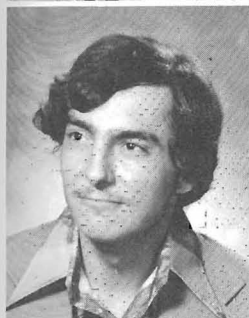
**ERMIAS ADMASSU**  
Addis Ababa, Ethiopia



**THERESA A. ADRIAN**  
St. Louis, Mo



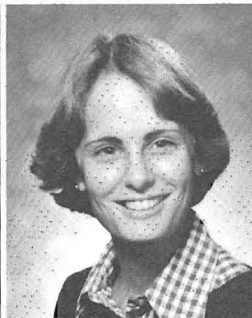
**JEROME JAMES ALONGI**  
St. Louis, Mo



**SAMUEL P. ALOTTA**  
St. Louis, Mo



**RUTH ASH**  
Creve Coeur, Mo



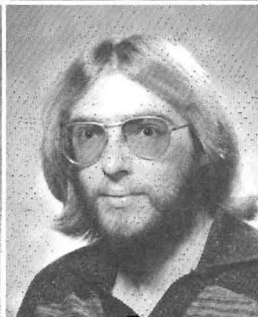
**KAREN E. ASHTON**  
St. Louis, Mo



**MICHAEL RODNEY ATKINS**  
St. Louis, Mo



**MARILYNN S. BACKHAUS**  
St. Louis, Mo



**RICHARD W. BACKS**  
St. Louis, Mo



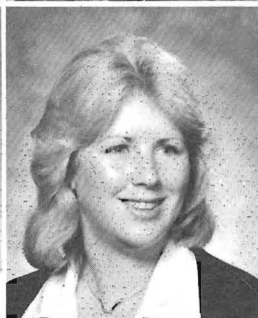
**PAULA T. BALLEW**  
St. Louis, Mo



**ANGELA LOUISE BANGE**  
Cottleville, Mo



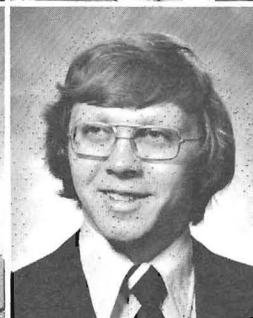
**MARY PATRICIA BARRY**  
Bridgeton, Mo



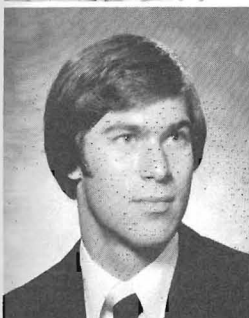
**JANET M. BARTELS**  
St. Louis, Mo



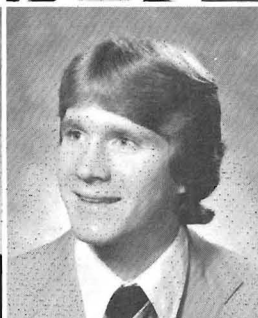
**BRUCE E. BAXTER**  
St. Louis, Mo



**DALE J. BECK**  
St. Louis, Mo



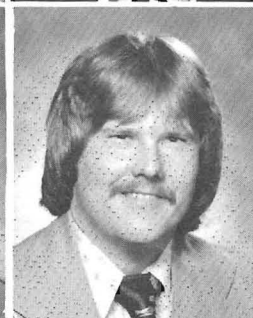
**THOMAS MICHAEL BECK**  
St. Louis, Mo



**PAUL MICHAEL BECKERLE**  
St. Louis, Mo



**PATRICIA A. BECKMANN**  
St. Charles, Mo



**MARK D. BEEN**  
St. Louis, Mo



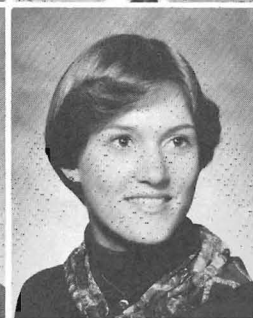
**NANCY ANN BELASKA**  
Florissant, Mo



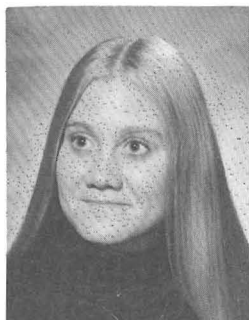
**BARBARA D. BELL**  
Racine, Wi



**BONNIE J. BIESECKER**  
Larsen, Wi



**TERRY W. BLAKE**  
St. Louis, Mo



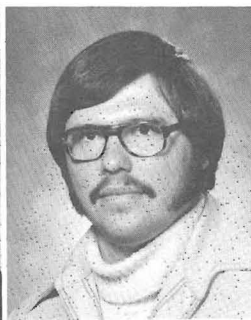
**GAIL A. BLOOMFIELD**  
Florissant, Mo



**K. BLANDON**  
St. Louis, Mo



**LOIS ANN BOKAL**  
University, Mo



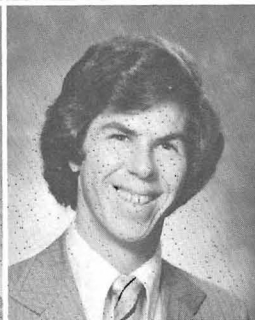
**DALE K. BOLTON**  
St. Charles, Mo



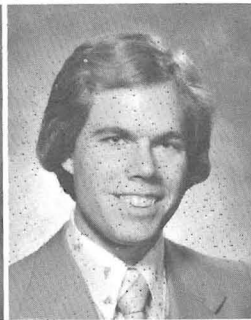
**DONNA M. BORGMeyer**  
St. Louis, Mo



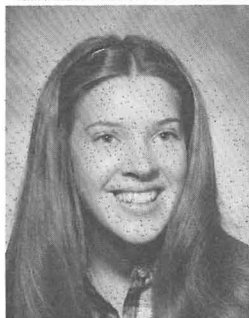
**BARBARA A. BRADFORD**  
St. Louis, Mo



**MICHAEL F. BRADT**  
Bellmore, NY



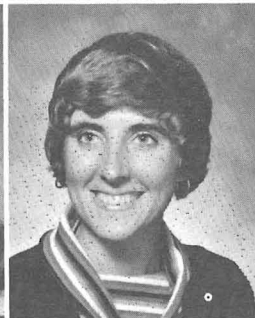
**GARY W. BRANDES**  
Wright City, Mo



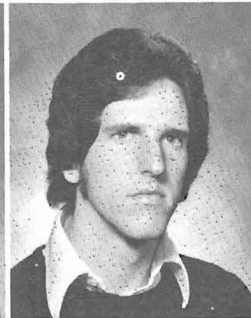
**SALLY ANNE BRECK**  
Overland, Mo



**VICKI L. BREITE**  
St. Louis, Mo



**PEGGY K. BRENNAN**  
Manchester, Mo



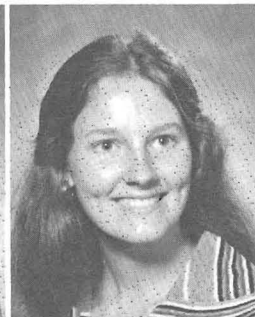
**JAMES THOMAS BROOKS**  
St. Louis, Mo



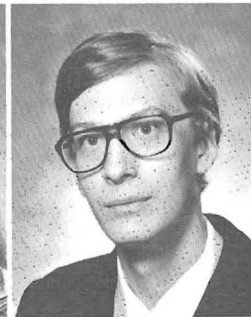
**SHERRY LYNN BROWN**  
St. Louis, Mo



**VICTORIA L. BRUCE**  
St. Louis, Mo



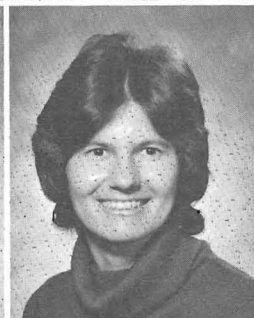
**BARBARA JEANNE BUFE**  
St. Louis, Mo



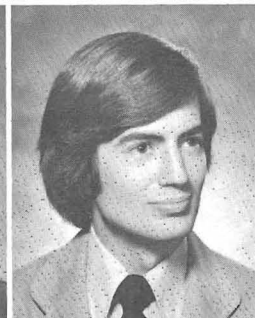
**JOSEPH WALTER BULOCK**  
Florissant, Mo



**CASSANDRA J. BUTLER**  
Hazelwood, Mo



**PATRICIA K. BYBEE**  
St. Louis, Mo



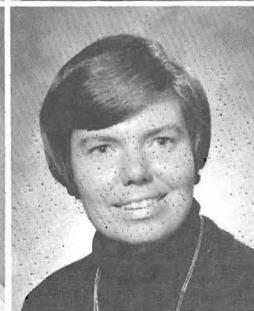
**RICHARD D. BYRNS**  
St. Louis, Mo



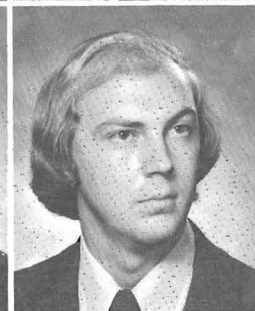
**JOYCE MARIE CAMMON**  
Joliet, Il



**ALICE M. CANHAM**  
St. Louis, Mo



**VICKI L. CARR**  
St. Louis, Mo

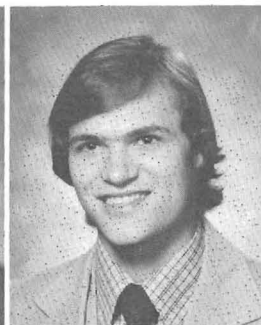
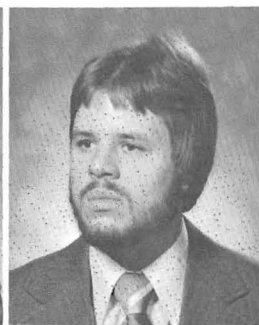
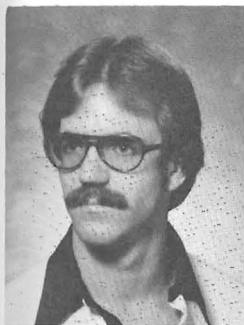


**CRAIG S. CARTER**  
St. Louis, Mo



**CATHY M. CHAPIN**  
Gideon, Mo



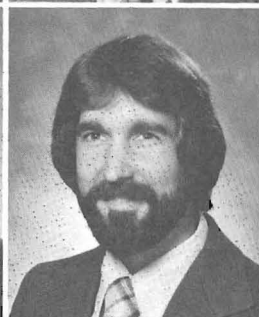
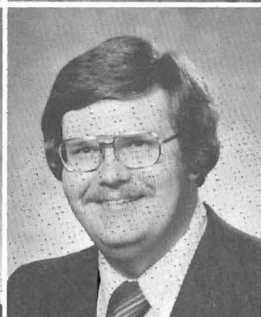


**WILLIAM J. CIBULKA**  
St. Louis, Mo

**MARY E. CLARK**  
Florissant, Mo

**JOSEPH ALOYSIUS COLEMAN**  
St. Louis, Mo

**JAMES D. COLTER**  
Berkeley, Mo

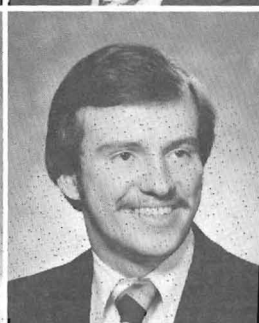
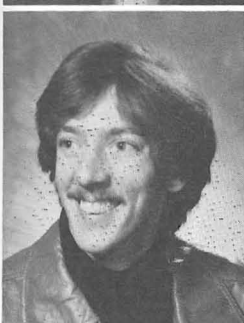


**SHERREE LYNN COMPTON**  
St. Louis, Mo

**TERRY D. COOPER**  
Florissant, Mo

**DALE E. CORNELIUS**  
St. Louis, Mo

**KHARYN LEE COVER**  
University City, Mo

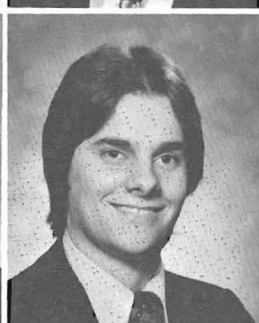
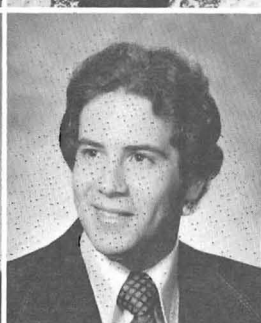


**ROBERT B. COVER**  
St. Louis, Mo

**REBECCA LYNN COX**  
Columbus, Ga

**DANIEL A. CRONE**  
Dallas, Tx

**ELAINE R. CROWELL**  
St. Louis, Mo

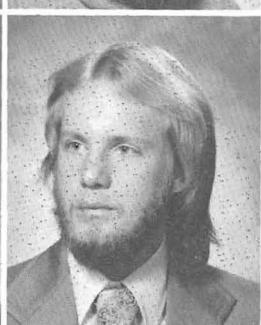


**RAYMOND LEON CROWNOVER**  
Maryland Heights, Mo

**LAWRENCE J. CURCURU**  
St. Louis, Mo

**JOSEPH R. CURTIS**  
St. Louis, Mo

**DONNA F. DANNENMAIER**  
Arnold, Mo

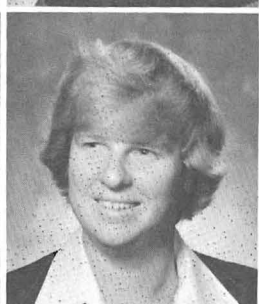
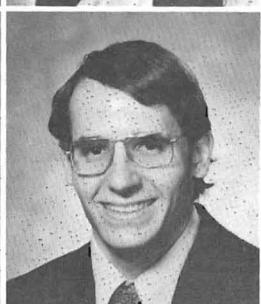


**DAVE A. DAPRON**  
St. Louis, Mo

**CHERYL M. DARDEN**  
St. Louis, Mo

**JERRI V. DAVIS**  
St. Louis, Mo

**RONALD FRANCIS DAVIS**  
St. Louis, Mo



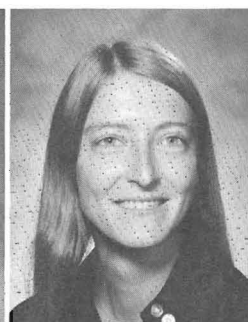
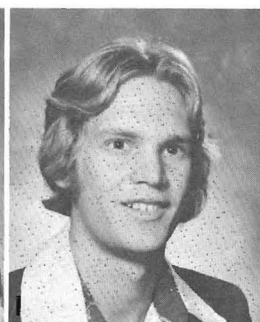
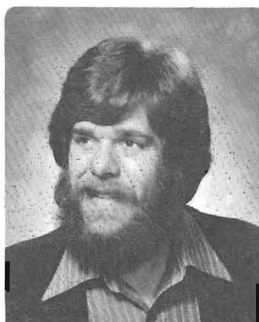
**MICHAEL A. DELANEY**  
Ballwin, Mo

**DENNIS M. DELFERT**  
Bridgeton, Mo

**MARK LAWRENCE DEMPSEY**  
St. Louis, Mo

**KAREN A. DEWITT**  
St. Louis, Mo



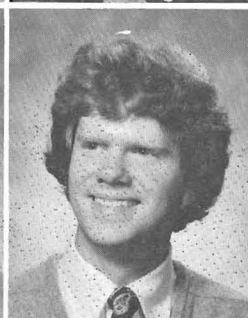
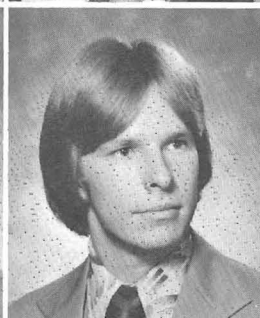


**H. TED DIEKEMPER**  
St. Louis, Mo

**CYNTHIA ANN DORIA**  
Overland, Mo

**DENNIS P. DOUGHERTY**  
St. Louis, Mo

**DONNA J. ECKBERG**  
Ferguson, Mo

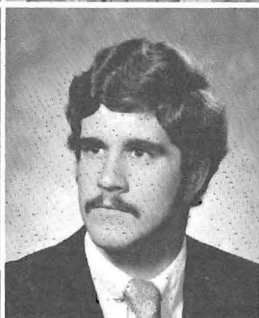
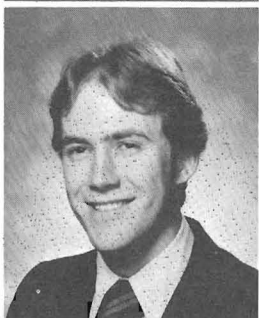


**KAREN A. ECKENROTH**  
St. Louis, Mo

**MYRTLE L. EDERATI**  
St. Louis, Mo

**ALAN B. EICKHOFF**  
St. Louis, Mo

**CHARLES A. ELFRANK**  
Chesterfield, Mo

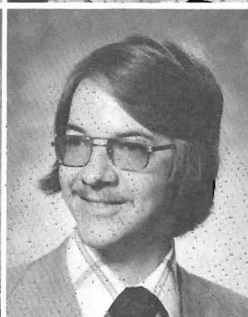
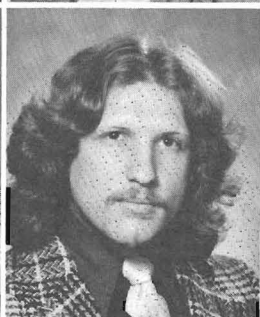
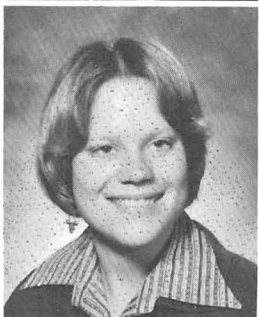


**DANIEL K. FETSCH**  
St. Peters, Mo

**KENNETH ALLEN FEY**  
Crestwood, Mo

**JAMES M. FIELDS**  
St. Louis, Mo

**ERIN P. FINAZZO**  
St. Louis, Mo

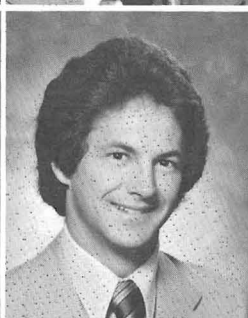
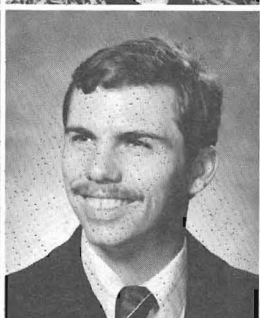
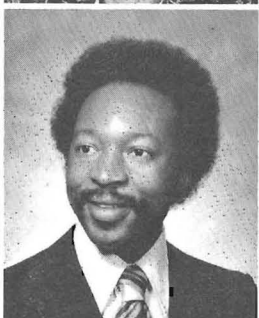
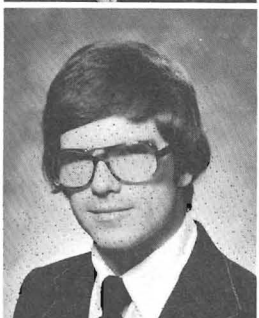


**BRIDGET ANNETTE FOCHS**  
Beloit, Wi

**BRENDA MAREA FOLSOM**  
Bronson, Fl

**RICHARD MARK FOLTZ**  
Kansas City, Mo

**ROBERT MATTHEW FOSHAGE**  
St. Louis, Mo

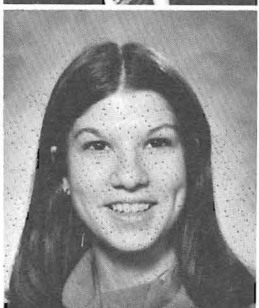


**PETER J. FOX**  
Florissant, Mo

**ROBERT R. FRANCIS**  
St. Louis, Mo

**PAUL B. FRIEDRICH**  
St. Louis, Mo

**PAUL M. FRODYMA**  
St. Louis, Mo



**LINDA T. FUSE**  
St. Louis, Mo

**CYNTHIA LOUISE GAASCH**  
St. Louis, Mo

**CHRISTIE L. GABBERT**  
St. Louis, Mo

**TERRESA KAY GAINEY**  
Bridgeton, Mo



**MARGARET MARY GALLAGHER**



**AUDREY F. GELBER**  
St. Louis, Mo



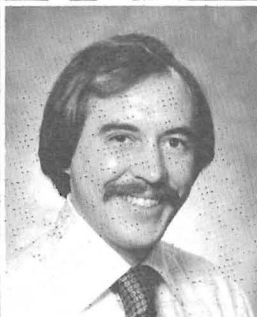
**JON M. GERBER**  
University City, Mo



**DENISE A. GIBBLE**  
St. Louis, Mo



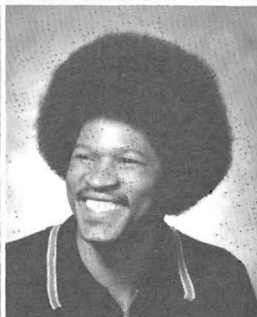
**PAULA JEAN GIBBLE**  
St. Louis, Mo



**FRED GILBERT**  
St. Louis, Mo



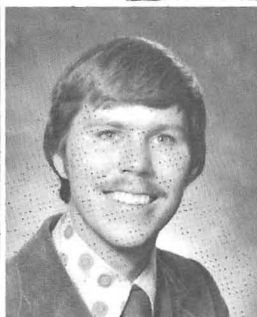
**NANCY A. GLICKERT**  
Chesterfield, Mo



**ARCHIE JAMES GRIFFIN**  
St. Louis, Mo



**BARBARA C. GUNNARSON**  
Florissant, Mo



**MARK RICHARD GUSTAFSON**  
Ellisville, Mo



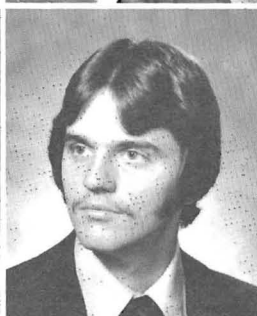
**SUSAN ANGELA GUTTIER**  
St. Louis, Mo



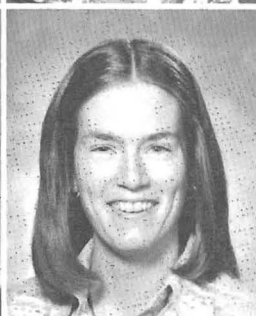
**CAROL J. HALL**  
St. Louis, Mo



**NAOMI E. HALVERSON**  
San Francisco, Ca



**JOHN R. HAMMERSCHMIDT**  
St. Louis, Mo



**THERESA M. HANLEY**  
Bellefontaine Neighbors, Mo



**DWAYTH L. HARGROVE**  
St. Louis, Mo



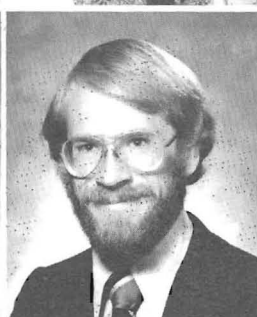
**EZRA A. HARRIS**  
Centralia, Il



**CATHY F. HARTMANN**  
St. Louis, Mo



**ANDREA D. HAYDEN**  
St. Louis, Mo



**WILLIAM MICHAEL HEATH**  
Ferguson, Mo



**KAY K. HEIDBREDER**  
St. Louis, Mo



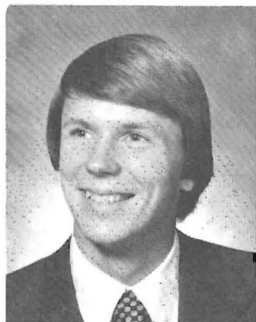
**JULIE A. HENDEL**  
St. Louis, Mo



**KATHLEEN A. HEROLD**  
Shrewsbury, Mo



**LORI K. HERRING**  
Troy, Mo



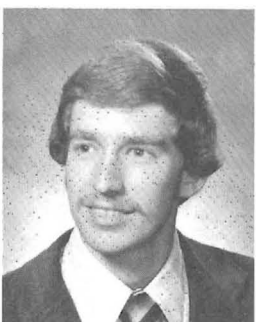
**GARY W. HESS**

St. Louis, Mo



**DENISE DEE HILLIARD**

Ferguson, Mo



**THOMAS ALAN HINRICHS**

St. Louis, Mo



**WILLIAM CHARLES HIPPISEY**

St. Louis, Mo



**MARK S. HIZER**

St. Louis, Mo



**BRIAN CLAUDE HODAK**

St. Louis, Mo



**ADRIENE GLORIA HODGE**

Berkeley, Mo



**ANN DUCHESNE HODGE**

Bridgeton, Mo



**NANCY KAY HOERIG**

St. Louis, Mo



**SUSAN A. HOGAN**

St. Louis, Mo



**LINDA K. HOLLINGER**

St. Louis, Mo



**JEFFREY S. HOROWITZ**

Creve Coeur, Mo



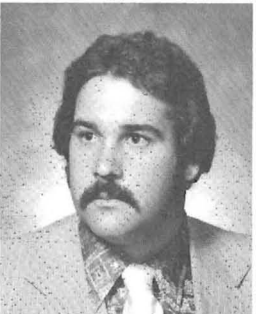
**GERALDINE HORTON**

St. Louis, Mo



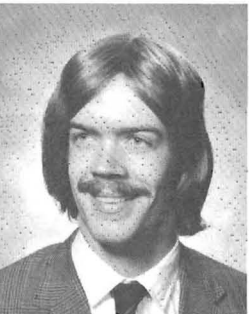
**JACK M. HOUSE**

Ferguson, Mo



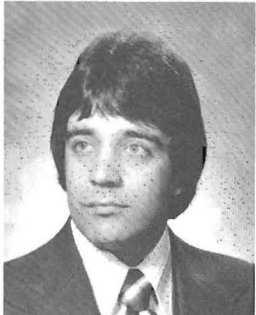
**STEPHEN PATRICK HOWELL**

Hollywood, Ca



**GALLYN A. HUDGENS**

Maryland Heights, Mo



**JAMES S. HUGHES, JR.**

Bowie, Tx



**ELISE MARIE HUMPHREY**

St. Louis, Mo



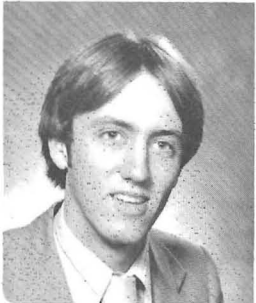
**JOAN C. HUTSON**

St. Louis, Mo



**ELLEN C. IMMER**

St. Louis, Mo



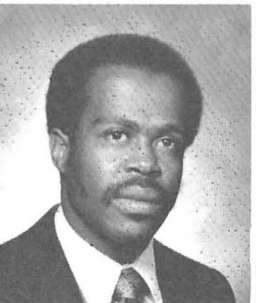
**MICHAEL R. IMMER**

St. Louis, Mo



**CARL L. IRWIN**

St. Ann, Mo



**FRANK JACKSON, JR.**

Hempstead, Tx



**KATHY ROSE JAMISON**

Helena, Ar



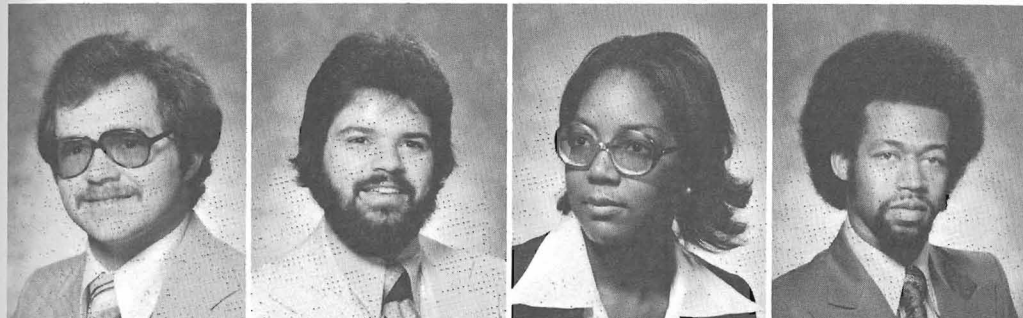


**WALT Q. JASCHEK**  
St. Louis, Mo

**DENNIS L. JOHNSON**  
Berkeley, Mo

**GREGORY A. JOHNSON**  
St. Louis, Mo

**TERRY CHIP'S JONES**  
Oz

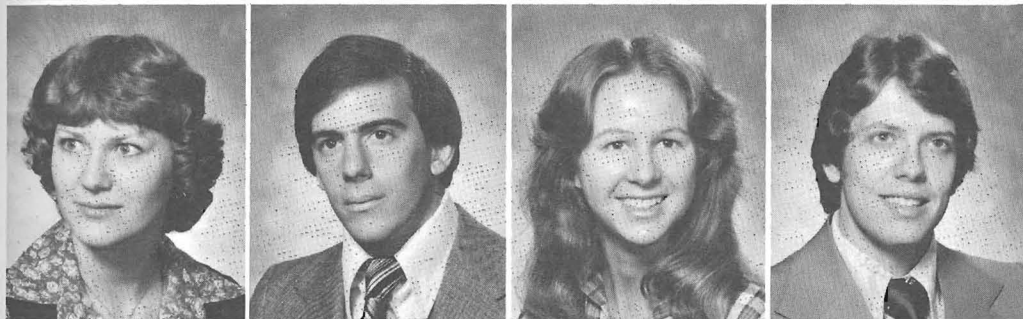


**TERRY L. JONES**  
St. Louis, Mo

**MICHAEL A. KAFOURY**  
Creve Coeur, Mo

**DIANE KEDLEY**  
St. Louis, Mo

**JOHN F. KELLEY**  
St. Louis, Mo



**MONIKA KATALIN KESZEI**  
St. Louis, Mo

**RANDALL W. KEYSER**  
St. Louis, Mo

**PATRICIA A. KIMMICH**  
Affton, Mo

**WILLIAM F. KLAGES**  
St. Louis, Mo



**GERALD WILLIAM KLINGLER**  
Blackjack, Mo

**BETTY JANE KOSFELD**  
Ferguson, Mo

**SHARON K. KROPP**  
St. Charles, Mo

**MARGARET R. KRUSE**  
Dellwood, Mo



**THOMAS G. KUHN**  
Chesterfield, Mo

**SUSAN M. KULAGE**  
Bridgeton, Mo

**VICKI L. LAMB**  
Maplewood, Mo

**JEANICE L. LANDOLT**  
St. Louis, Mo



**BEVERLY P. LEE**  
St. Louis, Mo

**MICHAEL W. LEHDE**  
St. Louis, Mo

**JOSEPH P. LICAVOLI**  
St. Louis, Mo

**MICHAEL G. LONG**  
St. Louis, Mo



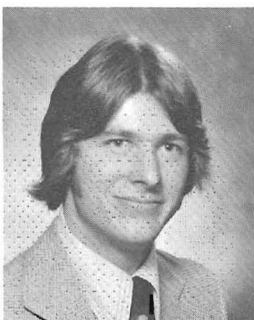
**MARTHA RENEE LOVETT**

St. Louis, Mo



**KAREN ANN LUM**

Florissant, Mo



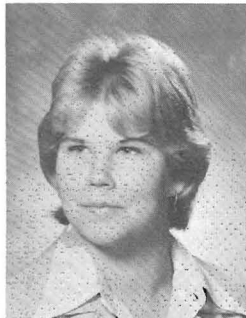
**MICHAEL J. LYDON**

St. Paul, Mn



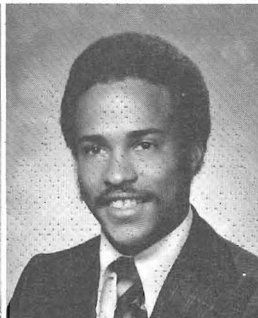
**ALICE J. LYLES**

Richmond Heights, Mo



**BEVERLY A. MARCINI**

Florissant, Mo



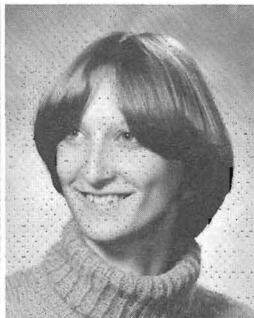
**DANIEL MASONIV**

Berkeley, Mo



**JOAN C. MATHERLY**

St. Louis, Mo



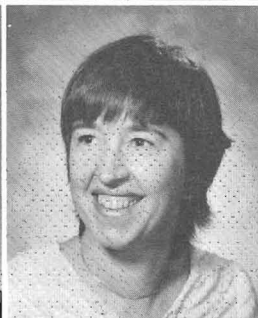
**ANNE E. MAYNARD**

Great Falls, Mt



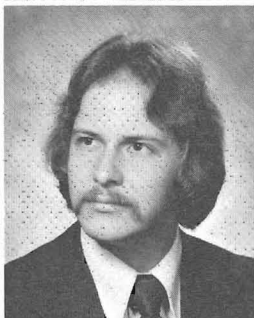
**JOHN M. MC CLUSKEY**

Des Peres, Mo



**JULIA CECELIA MC EACHERN**

St. Louis, Mo



**KEVIN KENT MC KENZIE**

St. Louis, Mo



**JANICE MAMERTEN**

St. Louis, Mo



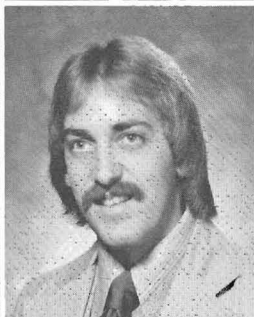
**KATHLEEN A. METZGER**

St. Ann, Mo



**ANNETTE MILLER**

Jennings, Mo



**JOHN D. MILLS**

St. Louis, Mo



**CINDI L. MILNER**

St. Louis, Mo.



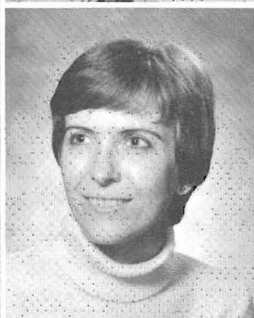
**DIANA T. MOHAN**

St. Louis, Mo



**CONNIE L. MORGAN**

St. Louis, Mo



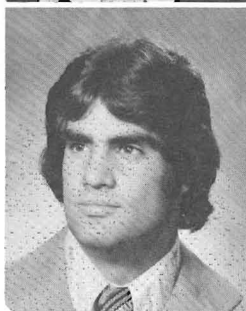
**JOAN CAROLYN MORGAN**

Mc Nairy, Tn



**THOMAS R. MORRIS**

Florissant, Mo



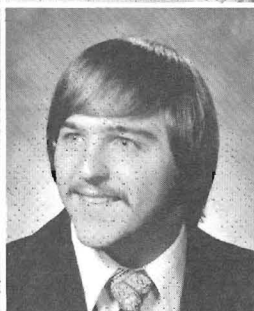
**ALBERT W. MORROW**

St. Louis, Mo



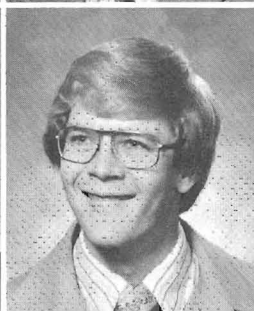
**PAMELA D. MOSES**

St. Louis, Mo



**GARY L. MOSS**

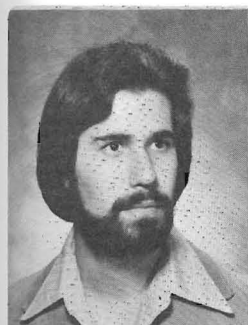
Jennings, Mo



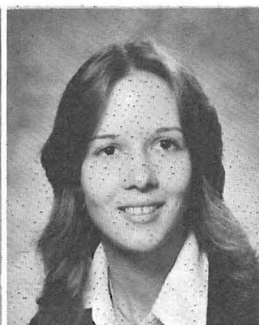
**THOMAS E. MURRAY**

Jennings, Mo





**JAMES J. NAPOLI**  
St. Louis, Mo



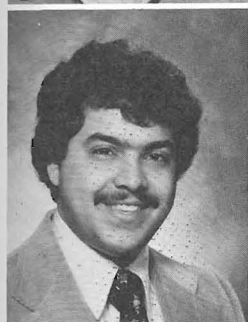
**KAREN F. NAUMANN**  
St. Louis, Mo



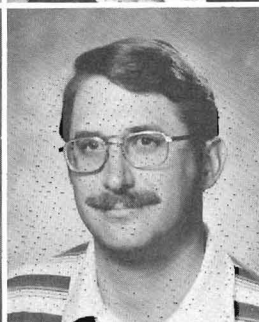
**MARY E. NEEDHAM**  
Festus, Mo



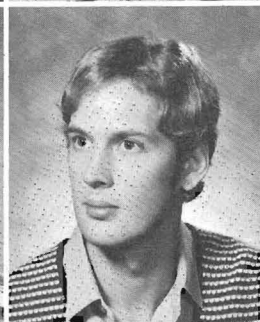
**SARA F. NICHOLS**  
Oklahoma City, Ok



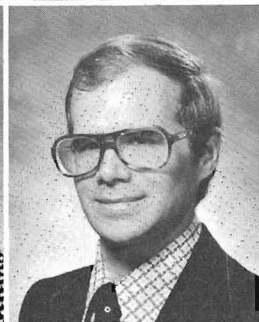
**DANIEL M. NICKEL**  
St. Louis, Mo



**WILLIAM C. NOLTE**  
Los Angeles, Ca



**MICHAEL THOMAS OLSON**  
Omaha, Ne



**TERRY L. ONDER**  
St. Louis, Mo



**LULA DEE PASCALL**  
St. Louis, Mo



**CAROLYN M. PERL**  
St. Louis, Mo



**KARLA J. PERSOV**  
St. Louis, Mo



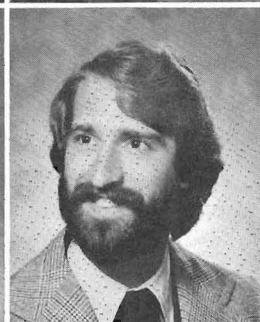
**ARLENE S. PFLEEGER**  
Florissant, Mo



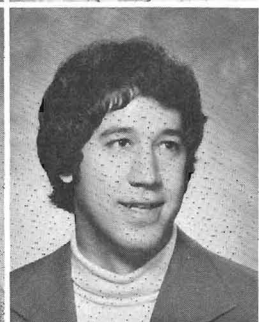
**LINDA ANNE PINA**  
New Bedford, Ma



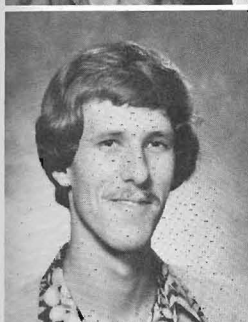
**ELIOT L. PLANELLS**  
Chesterfield, Mo



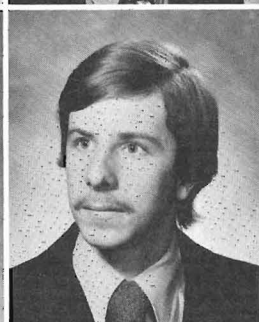
**JOHN J. PLACHT**  
St. Louis, Mo



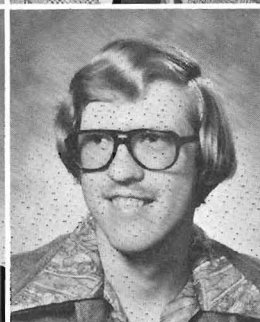
**CHRISTIAN M. PLUT**  
St. Louis, Mo



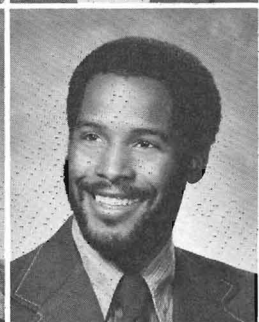
**MARK JOHN POZZO**  
Chicago, Il



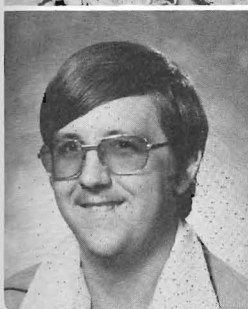
**MARK A. PRIBBLE**  
St. Louis, Mo



**WILLIAM G. PRICE**  
Woodson Terrace, Mo



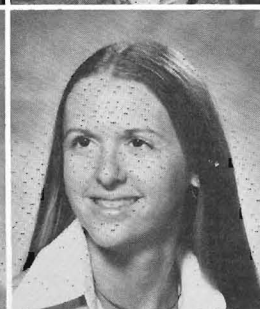
**JAMES E. QUINTON, JR.**  
Junction City, Ks



**RICHARD J. RATH**  
St. Louis, Mo



**NEIL F. REBBE**  
Manchester, Mo

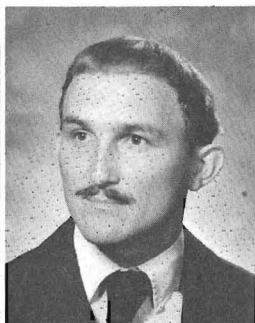
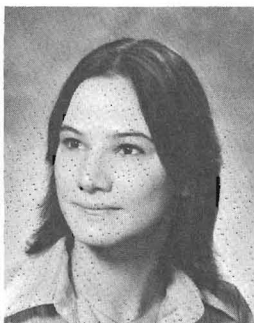


**JACQUELINE G. RECK**  
St. Louis, Mo



**PAMELA Y. REED**  
Black Jack, Mo



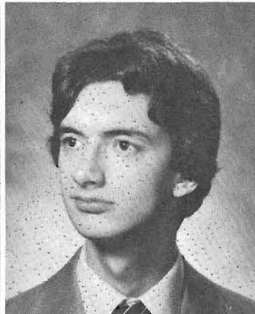
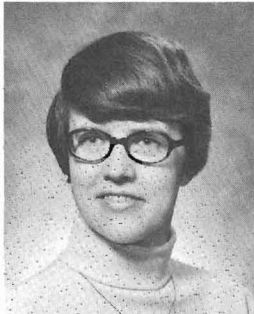
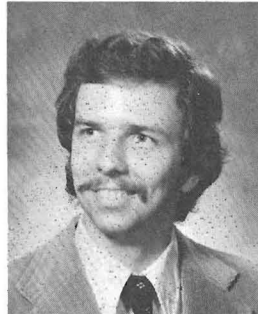


**NANCY L. REINISCH**  
St. Louis, Mo

**JULIE A. RICHARDT**  
Webster Groves, Mo

**DENNIS L. ROACH**  
Russellville, Ar

**PAULA JEAN ROBERTS**  
St. Louis, Mo

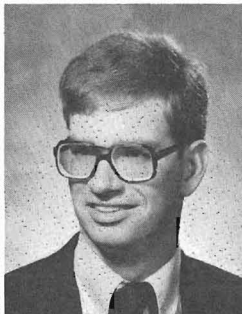
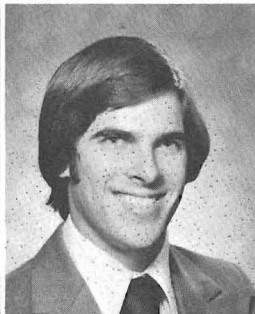


**PERRY A. ROBINSON**  
St. Louis, Mo

**SR. PATRICIA A. RODEMANN**  
St. Louis, Mo

**RICHARD J. ROEMERMAN, JR.**  
St. Louis, Mo

**EMILY E. ROSS**  
Memphis, Tn

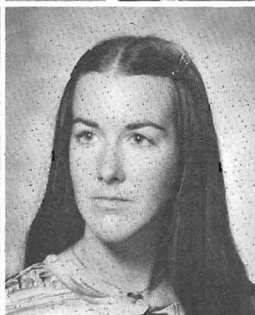


**MARY C. ROTHWEIER**  
St. Louis, Mo

**BONNIE PAMELA RUBIN**  
St. Louis, Mo

**LAWRENCE A. RUDOLPH**  
St. Louis, Mo

**JOHN FRANCIS RYAN**  
St. Louis, Mo

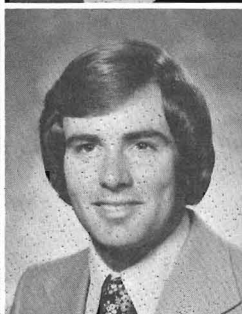
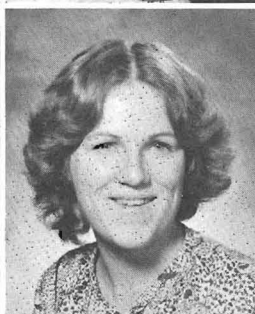
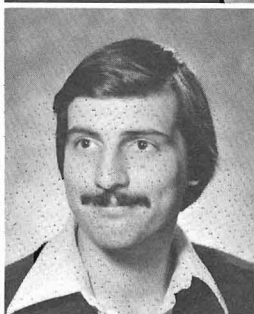


**CECILIA M. SAGO**  
Maplewood, Mo

**ELIZABETH A. SCHAEFER**  
St. Louis, Mo

**CAROLE A. SCHIMWEG**  
Florissant, Mo

**CATHLEEN A. SCHENCK**  
Troy, Oh

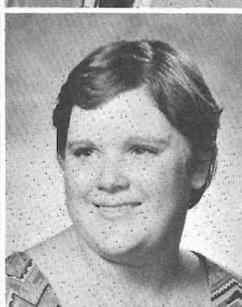
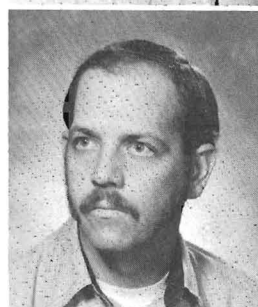


**JEANNINE I. SCHLEICHER**  
St. Louis, Mo

**MARK S. SCHNEIDER**  
St. Louis, Mo

**DENISE M. SCHRADER**  
St. Louis, Mo

**RICHARD T. SCHULER**  
Florissant, Mo



**LEWIS E. SCHULZ**  
St. Charles, Mo

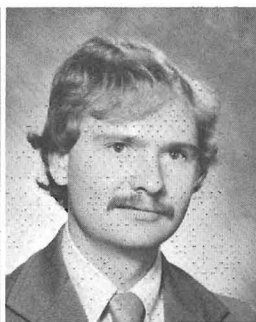
**EILEEN PATRICIA SCHURWAN**  
St. Louis, Mo

**CATHERINE S. SEHR**  
St. Louis, Mo

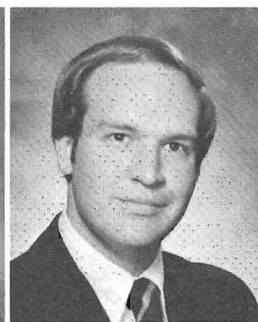
**ANITA F. SHANNON**  
St. Ann, Mo



**PATRICIA ANN SHELLEY**  
St. Louis, Mo



**JAMES F. SHREWSBURY**  
St. Louis, Mo



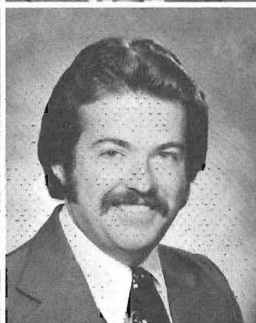
**KEVIN J. SIGILLITO**  
St. Louis, Mo



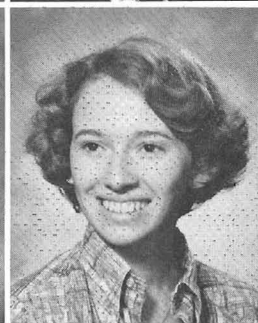
**PAUL HUGH SKYLES**  
St. Louis, Mo



**EVELYN D. SMITH**  
St. Louis, Mo



**RANDALL ALLEN SMITH**  
St. Louis, Mo



**CHRISTINE SNARRENBURG**  
Chesterfield, Mo



**DONNA E. SNOWBARGER**  
Florissant, Mo



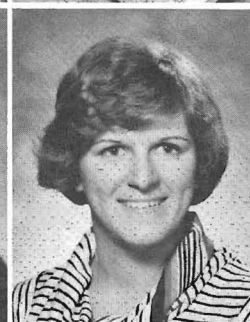
**SUE MIDDLETON SPANN**  
Clayton, Mo



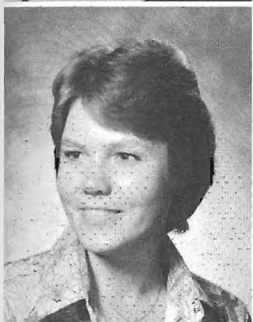
**BARBARA ANN SPEIER**  
St. Louis, Mo



**DONNA J. STANLEY**  
Hazelwood, Mo



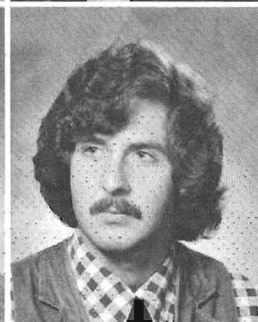
**JANICE E. STAFF**  
St. Louis, Mo



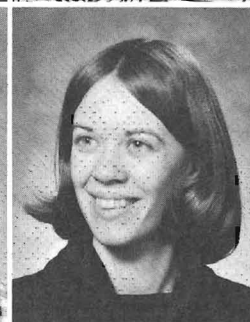
**TERESA ANN STEFFENS**  
St. Louis, Mo



**CYNTHIA J. STEINBRUEGGE**  
St. Louis, Mo



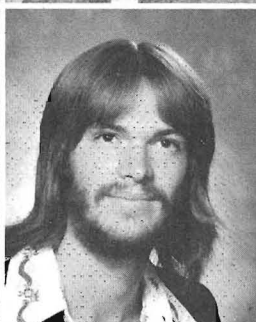
**STEVEN A. STEWART**  
St. Louis, Mo



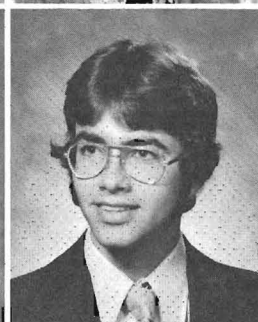
**MICHELE M. STOCK**



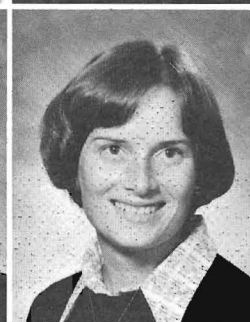
**JO ANN STORY**  
St. Louis, Mo



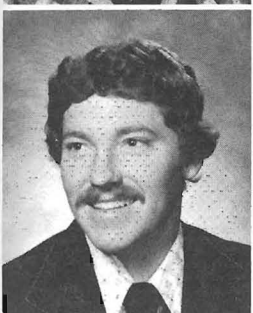
**JOSEPH A. STROETKER**  
Washington, Mo



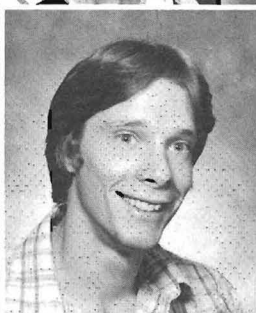
**GREGORY A. STROUD**  
St. Louis, Mo



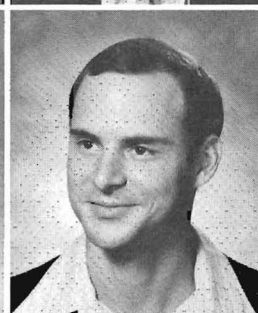
**KATHLEEN H. STUCKEY**  
St. Louis, Mo



**MARK L. SUCHER**  
St. Louis, Mo



**DOUGLAS A. TABACHIK**

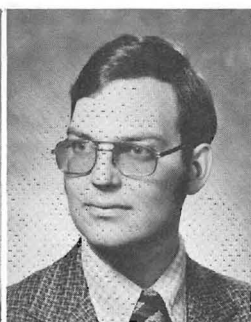
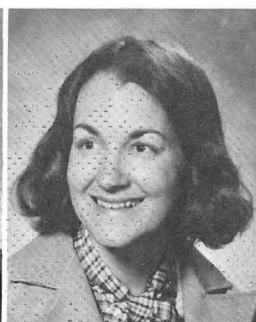
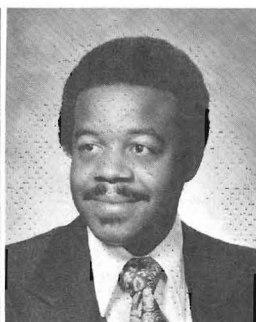


**GARY ORVAL THEISS**  
St. Louis, Mo



**LINDA SUE THIELE**  
St. Louis, Mo



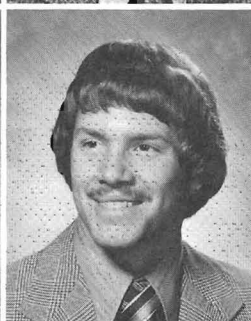
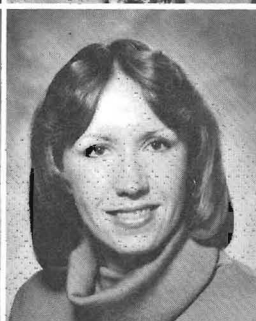


**DANIEL A. THOMANN**  
St. Louis, Mo

**EURGIE L. THOMAS**  
Florissant, Mo

**LOUISE F. THOMPSON**  
St. Louis, Mo

**DENNIS L. TIMMERMAN**  
Dellwood, Mo

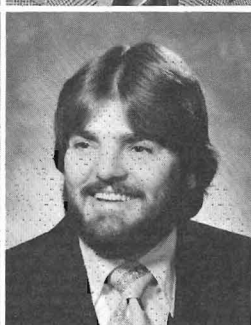
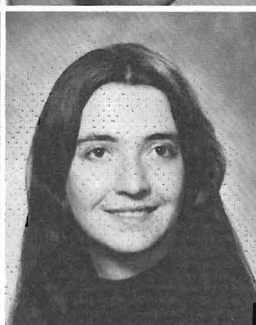


**EDWYNA MARGARET TOWLER**  
Clayton, Mo

**JOAN M. TRANKLE**  
St. Louis, Mo

**DAWN S. TRELZ**  
St. Louis, Mo

**RANDY L. TRIPP**  
Indianapolis, In

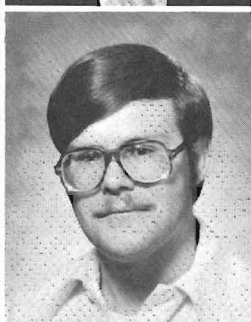
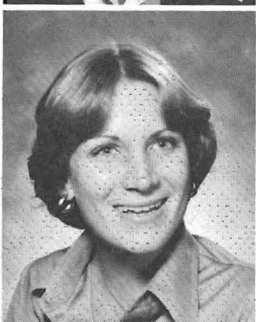
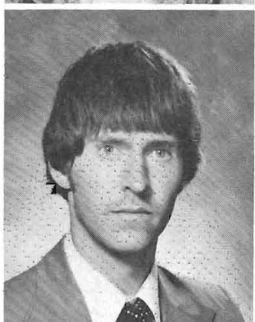


**SIN-MEI M. TSE**  
Hong Kong

**DONNA RENEE TUCKER**  
St. Louis, Mo

**KAREN L. TURNER**  
St. Louis, Mo

**EDWARD J. UEBINGER**  
St. Charles, Mo

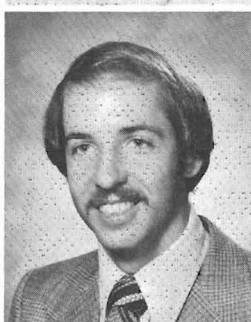
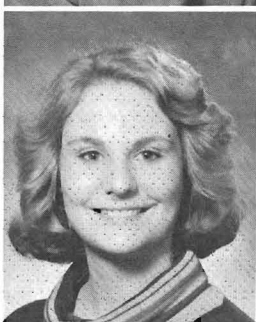
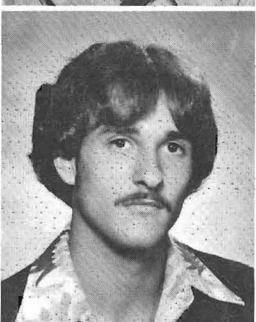


**PAUL ERIK ULDALL**  
St. Peters, Mo

**GENIE MARIE UNGER**  
St. Louis, Mo

**SHERI ANN VALENTINE**  
Chesterfield, Mo

**EDWARD VALENZUELA, JR**  
Munich, Germany

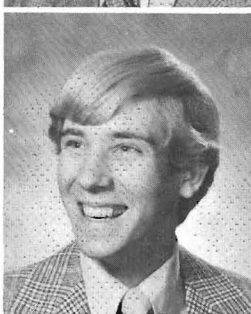
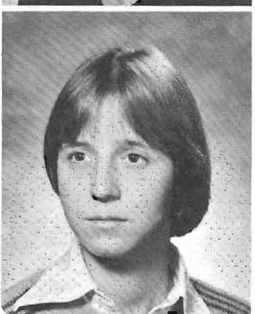


**LINDA E. VESPERENY**  
St. Louis, Mo

**PHILIP A. VIVIRITO**  
St. Louis, Mo

**ELLEN W. WAGENER**  
St. Louis, Mo

**CURTIS W. WATTS**  
St. Louis, Mo



**TOMMIE L. WEHRLE**  
St. Louis, Mo

**MARIE ANTOINETTE WEHRLE**  
St. Louis, Mo

**JANE A. WELSH**  
St. Louis, Mo

**STEVE A. WERNER**  
St. Louis, Mo





**CAIN A. WESTBROOK**

Brinkley, Ar

**SHARON MARIE WHARTON**

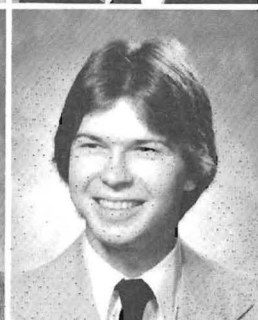
St. Louis, Mo

**FRANCES G. WHITE**

St. Louis, Mo

**LONZO WILLIAMS**

St. Louis, Mo



**DORIS WILLIAMSON**

St. Louis, Mo

**PAMELA J. WINTERS**

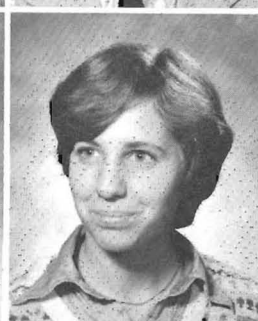
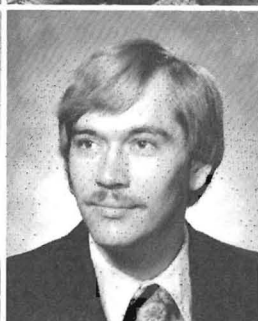
Crystal City, Mo

**ROBERT GENE WITTENAUER**

St. Louis, Mo

**GERARD G. WITTMANN**

St. Louis, Mo



**SABLE LYNN WOELFER**

St. Louis, Mo

**DONAL LEE WOHLDMANN**

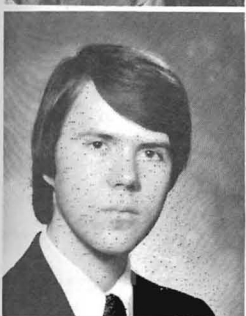
St. Louis, Mo

**PATRICIA A. WOLFE**

St. Louis, Mo

**LYNDA R. WORKMAN**

Manchester, Mo



**GARY G. ZIMMERMAN**

Florissant, Mo

**ACKER, F.** Accounting, B.S.; University Orchestra, Beta Alpha Psi, Income Tax Project.

**ADMASSU, E.** Political Science, B.A.

**ADRIAN, T.** Business Admin., B.S.; Beta Alpha Psi, Accounting Club, Univ. Scholar Scholarship.

**ALONGI, J.** Business Administration, Bachelor of Science; Sigma Tau Gamma Fraternity, Homecoming Court 1977, Inter Greek Council Rep., Business Admin - Marketing, Management B.S.

**ALOTTA, S.** Business Administration, Bachelor's.

**ASH, R.** Administration of Justice, B.S.

**ASHTON, K.** Accounting, B.S.; Deans List.

**ATKINS, M.** Business Admin., B.S.; President & Founder: Royal Knights of UMSL, Treas. NAACP, EBT, MSSC, UMSL Chess Club, Accounting Club, Marketing Club, A.C.'s Social Club.

**BACKHAUS, M.** English, B.S. (w/secondary certification).

**BACKS, R.** Psychology, B.A.

**BALLEW, P.** Psychology, B.A.; Psychology, Bachelor of Arts, Dean's List, University Scholar.

**BANGE, A.** Elementary Education, B.S.; Transferred from Northeast Mo. State University, Kirksville, Mo. 1975, Dean's List, Interests: Bob, Books, Music, Working with Kids.

**BARRY, M.** Accounting, B.S.

**BARTELS, J.** Speech Communication, B.A.; KWMU Student Staff Promotion Director, Interests: Public Relations, Concerts, Partying in Lafayette Square.

**BAXTER, B.** Accounting, B.S. Business; Charter Member of TKE Fraternity, Elected Rep. to Central Council, Secretary of UMSL Senate, Main Interest: Serving Jesus with my life.

**BECK, D.** Biology, Bachelor of Arts; His Interests are in the Field of Biology and Sports.

**BECK, T.** Accounting, Business Administration; Accounting Club, Beta Alpha Psi, Volleyball and Soccer Intermurals.

**BECKERLE, P.** Administration of Justice, B.A.; Beer Drinking, Swimming(Varsity), Card Playing.

**BECKMANN, P.** Marketing, Business.

**BEEN, M.** Bus. Admin. - Mktg., B.S.; Marketing Club.

**BELASKA, N.** Administration of Justice, A.O.J.; 1975, UMSL Homecoming Court, 1975 Sigma Tau Gamma White Rose Court, Charter Member of Zeta Tau Alpha Sorority, Central Council Rep., IGC Rep., Pan Hellenic Rep. Intermural Sports.

**BELL, B.** Social Work, Bachelor.

**BIESECKER, B.** Accounting, Business; Beta Alpha Psi, Accounting Club.

**BLAKE, T.** Physical Education, B.S.; Social Chairman for Phi Epsilon Kappa, M.A.H.P.E.R., Zeta Tau Alpha, Member of Education Assembly.

**BLOOMFIELD, G.** Physical Education, B.S.; I coach gymnastics, I am graduating as a physical educator, I like to run.

**BLANDON, K.** Music Ed., Bachelor of Music Ed.

**BOKAL, L.** Spl., Educ., Spl./Elem. Ed.; Children, Sports, Needlework, Cars.

**BOLTON, D.** Business Adm., B.S.; Business Adm. B.S., Slow Pitch Softball Player, Interests: Music, Sports.

**BORGMEYER, D.** Business Adm., B.S.; Central Council 4 years, Delta Zeta Sorority, Student Affairs Awards 75-77, Who's Who Among Students in American Universities and Colleges, 1976-77 Homecoming Queen.

**BRADFORD, B.** Business Education, B.S. Education.

**BRADT, M.** Music, Bachelor of Music; Sports, Jazz, Symphony.

**BRANDES, G.** Music, Bachelor; President of Band '76-'77, Vice President MENC '76-'77, Cross Country Letterman, Member of Pi Kappa Alpha Fraternity, Int. Teaching.

**BRECK, S.** Social Work, B.S.W.; Social Work Club, Inter-Varsity Christian Fellowship, Deans List, Interested in Working with Juvenile Delinquency.

**BREITE, V.** Marketing, Business Admin.; Member of U.M.S.L.'s Marketing Club.

**BRENNAN, P.** Business-Marketing-Mgmt., B.S.; Delta Zeta Sorority, Pi Sigma Epsilon Business Fraternity, Curators Scholarship, Intramural Tennis, Intramural Bowling.

**BROOKS, J.** Music, Bachelor of the Arts; All Facets of Music, Performance, Instruction, Composition, Sports.

**BROWN, S.** Psychology, B.A.; Bachelor of Science in Psychology, Evening College, Guitarist - Enjoys Music and Sings in Guitar Group, Writes Poetry, Interested in Medical Field.

**BRUCE, V.** Elementary Education, B.S.

**BUFE, B.** Biology, B.A.; Alpha Xi Delta, Central Council, Course Evaluation, University Senate, Homecoming Court '76, Who's Who, Student Affairs Award, Kuechenmeister Grant, Big Bucks for Ducks, Canoeing, Flying Drawing, Photography Buff, Sail.

**BULOCK, J.** Chemistry, Bachelor of Science; A.C.S. Student Affiliates.

**BUTLER, C.** Marketing, B.S. Business Admin.; Minority Student Service Coalition, University Senate, Center for Academic Development Committee, Admissions and Student Aid Committee, Epsilon Beta Gamma, Inroads Student, Student Affairs Awards '75-'76, '76-'77.

**BYBEE, P.** Busn. Admin., B.S.; Dean's List All Semesters.

**BYRNS, R.** Marketing, B.A.; Write.

**CAMMON, J.** Psychology, B.A.; Peer Counseling.

**CANHAM, A.** English, B.A.; Univ. Year for Action Student, Art, Music and Drama, Avid Backpacker.

**CARR, V.** Social Work, B.S.W.; Bachelor in Social Work, Magna Cum Laude, Teaching Assistant in Psychology, Statistics Tutor, Social Work Club, Curriculum Committee, Interested in Medicine and Geriatrics.

**CARTER, C.** Speech Communications, Bachelor Arts & Sciences; Avid Sports Fan.

**CHAPIN, C.** Business Education, Bachelor of Science.

**CIBULKA, W.** Business Admin., Bachelor's; Marketing Club.

**CLARK, M.** Biology, Bachelors of General Studies; Medical Technology.

**COLEMAN, J.** Accounting, Bus. Admin., B.S.; Softball, Bowling, CYC Basketball Coach.

**COLTER, J.** Elem. Ed., B.A.

**COMPTON, S.** Speech Communications & French, B.S.; University Singers, Vocal Jazz Ensemble, University Chorus, Dean's List, University Players

**COOPER, T.** Business Administration (Accounting), B.S.; Beta Alpha Psi, University Scholar, Dean's List, McDonnell-Douglas Co-op Student.

**CORNELIUS, D.** Mkt., Bus. Adm.; Photography, Sports Cars & Sports Car Racing, Woodworking.

**COVER, K.** Accounting, B.A.; School of Bus. Admin. Policy Committee.

**COVER, R.** Art History, French, Arts and Science; Interests in French Language and Culture, Summer of '77 Spent in Paris, London, Amsterdam, Internship for Art History at Museum of Natural Science.

**COX, R.** Special Educ. Bachelors S., B.S. Education; Dean's List, Council for Exceptional Children, UMSL Student Chapter, Interests - Writing, Crafts.

**CRONE, D.** Political Science, Speech, B.A.; Student Senator - 3 yrs., Central Council - 4 yrs., Chairman, Student Affairs Committee, Twice Recipient of Student Activities Award, President of Fighting Spirit, Who's Who Award.

**CROWELL, E.** Instrumental Music, B. Mus. Ed.

**CROWNOVER, R.** History, A.B. with Teaching Certification; University Chorus and Singers, Powell Hall Concerts, University Scholar, Ordained Minister of the Pentecostal Church.

**CURCURI, L.** Marketing, Business Admin., B.S.; Interest - "Sports" - Football, Hockey, Baseball.

**CURTIS, J.** Business Administration, B.S.; Charter Member Tau Kappa Epsilon Fraternity, Vice President and President of Tau Kappa Epsilon Fraternity, Inter Greek Council Treasurer.

**DANNENMAIER, D.** Business Education, B.S.; SMSTA President, Kappa Delta Pi, Alpha Xi Delta, Nominated for Who's Who in American Colleges and Univer.

**DAPRON, D.** Management, B.S.; Deans List, Football, Baseball.

**DARDEN, C.** Urban Studies, B.S.G.; Sewing, Horticulture.

**DAVIS, J.** Chemistry, Bachelor of Science; University Scholar, Dean's List, Summa Cum Laude, American Chemical Society, Skiing, Walking in the Woods, Raising Hell.

**DAVIS, R.** Biology, B.A.

**DELANEY, M.** Administration, Business.

**DELFERT, D.** Biology, Chemistry, B.A.; Math Club, Student Affiliate to American Chemical Society, AMOCO Teaching Award Committee.

**DEMPSEY, M.** Mngt., Bus Admin.

**DEWITT, K.** English, B.S. Education; Play Guitar, Sing, Write Poetry.

**DIEKEMPER, H.** Political Science, B.A. or (A.B.); Political Science Academy, Medical Legal Field, Graduated?

**DORIA, C.** Psychology, B.A.; Cheerleading, Pom-Pon Squad '74-'75.

**DOUGHERTY, D.** Business Administration, Bachelor of Science; Varsity Soccer, Intramurals: Co-ed Hoc-Soc, Co-ed Water Polo, Basketball, Interest: Outdoors, Women.

**ECKBERG, D.** Sociology, B.A.; President of Students to Organize New Educational Dimensions, Member of Sociology Club, Armadillo Protection League.

**ECKENROTH, K.** Accounting, Business Administration; Member of Beta Gamma Sigma, Member of Beta Alpha Psi, Awarded Price Waterhouse Scholarship, UMSL Chorus Member, Peer Adviser for UMSL School of Business.

**EDERATI, M.** Sociology & Psychology, B.A.; Bicycling, Playing Around, Having Fun with My Child.

**EICKHOFF, A.** Administration of Justice, Bach.; IKA Fraternity, Motorcycles.

**ELFRANK, C.** Philosophy, B.A.; Painting as a Hobby. After graduation plan to go into the seminary.

**FETSCH, D.** Bus. Admin., B.S.; Pres. - Pi Kappa Alpha, UMSL Central Council Rep. UMSL Senate, Student Af-

fairs Award, Counselor - American Legion Boys State of Mo.

**FEY, K.** Accounting, B.A.

**FIELDS, J.** Ed., Soc. Studies, B.S.

**FINAZZO, E.** Elem. Ed., B.S.

**FOCHS, B.** Music Education, B.M.; Vice-Pres & Sec. Treas. Univ. Band, Pres. & V. Pres. Beta Sigma Gamma Sorority, M.E.N.C., Central Council Rep., Pres. Inter Greek Council, Student Affairs Award, Homecoming Court '77, Dean's List.

**FOLSOM, B.** History, B.S.; Missionary Work in Trinidad and Jamaica, Lived and Worked in a Half-Way House for Alcoholics and Drug Addicts.

**FOLTZ, R.** Biology, Bachelor of Arts; Pre Med., Deans List 1978, Plans: The U. of C., San Diego, Thanks to My Parents for Invaluable Help.

**FOSHAGE, R.** Accounting, Business Admin.; Accounting Fraternity - Beta Alpha Psi, Summa Cum Laude, Hot Air Ballooning.

**FOX, P.** History - Education, B.S.

**FRANCIS, R.** History, B.S.; Basketball, Omega Psi Phi Fraternity.

**FRIEDRICH, P.** History, Education; 1974 Letter Cross Country.

**FRODYMA, P.** Accounting, Bus. Admin.

**FUSE, L.** Psychology, Bach. of Arts.

**GAASCH, C.** Special Education, B.S.; Enjoy Playing Sports and Traveling.

**GABBERT, C.** Accounting, Business Admins.

**GAINEY, T.** Early Childhood & Elementary, B.S. Education; Teacher Assistant Education 101.

**GALLAGHER, M.** Social Work, B.S.W.; Meeting People, Growing Plants, Traveling Around U.S., Canoeing & Camping Out.

**GELBER, A.** Accounting, B.S.; Cum Laude, Deans List, Member Beta Alpha Psi, Member Accounting Club, American Society Women Accountants, NAA.

**GERBER, J.** Chemistry, B.S.; Associate of Am. Chem. Society, Chemistry Research Associate, Free Lance Photographer.

**GIBBLE, D.** Accounting, B.S., B.A.; Beta Alpha Psi - Corr. Sec., Accounting Club.

**GIBBLE, P.** Finance, B.S., B.A.; Pi Sigma Epsilon Marketing Fraternity, Accounting Club, Marketing Club, Statistics Tutor.

**GILBERT, F.** Administration of Justice, B.S.

**GLICKERT, N.** Business Administration, Bachelor of Science; Delta Zeta Sorority, Inter-Greek Council Rep. Pi Sigma Epsilon, Accounting Club, Central Council Representative.

**GRIFFIN, A.** Acct., B.S., B.A.; Playing Cards, Partying, Women, Basketball, Hobby - Goal - to Become a Millionaire.

**GUNNARSON, B.** Psychology, B.A.; B.A., Psychology, Dean's List, Psychology Research Assistant, Cum Laude, Student Activities Budget Committee, Assistant Director, Peer Counseling Center.

**GUSTAFSON, M.** Mathematics, B.S. Applied Ma.; Member of U.M.S.L.'s Math Club, Racketball, Have Computer Science Minors, Member of Carpenter's Union & Retail Clerks.

**GUTTIER, S.** Marketing, Management, Business Admin., B.A.

**HALL, C.** Finance (Bus. Adm.), B.S.; Piano, Horseback Riding, Car Races, Tennis.

**HALVERSON, N.** Music Education, B.M.E.; University Chorus, Central Council, Dean's List.

**HAMMERSCHMIDT, J.** Marketing, B.A.

**HANLEY, T.** Elementary Education, Bachelor of Science; Dean's List, Kappa Delta Pi, Skiing, Racquetball.

**HARGROVE, D.** Social Work, B.S.W.

**HARRIS, E.** Accounting, Business Admin.; Averaged 40 hour work week, Finished 4 year curriculum in 10, Served U.S. Air Force, Partied hearty, Dean's List, last 2 semesters.

**HARTMANN, C.** Social Work, B.S.W.; Involved in Various Christian Activities on Campus, Deans List, Enjoy Working with Aged.

**HAYDEN, A.** Psychology, B.A.; Dean's List.

**HEATH, W.** Economics, Bachelor of Science; Member Tau Kappa Epsilon Fraternity.

**HEIDBREDER, K.** Political Science, A.B.

**HENDEL, J.** Business Adm., Finance.

**HEROLD, K.** Education - Special, B.S. in Education; Swimming, Skiing, Enjoy Working with Children, Traveling.

**HERRING, L.** Elementary Education, B.S.; Kappa Delta Pi.

**HESS, G.** Business - Marketing, B.S.; 4 Year Golf Letterman, Member Tau Kappa Epsilon, UMSL Greek God 1977, Member Intramural Football Champion 1977 (Tikes), Participate Intramural Tennis, Hoc Soc.

**HILLIARD, D.** Speech, B.A.; University Players.

**HINRICHS, T.** Chemistry, B.S.; Deans List, Member of American Chemical Society, Hobbies: Enjoy Outdoors.

**HIPPISLEY, W.** Marketing & Management, B.S.; Tennis Team - UMSL, Beta Alpha Psi, Dean's List.

**HIZER, M.** Spanish, Bachelor's; Vice-President, Club Hispano, University Scholar, Chess Club, Intramural Tennis Dean's List.

**HODAK, B.** Accounting, B.S.

**HODGE, A.** Accounting, Bus. Admin.; Member of Small Business Counseling Program, UBDC - Interested in all Sports, Theater and Reading.

**HODGE, A.** Special Education, B.S.

**HOERIG, N.** Elementary Education, B.S.; Dean's List, Hobbies - Baseball, Craft Work - All Varieties.

**HOGAN, S.** Speech/Communication, Bachelor of Arts; Student Council Alternate for UMSL Players, Promotion Committee person for UMSL Players.

**HOLLINGER, L.** Math, B.A.

**HOROWITZ, J.** Business Admin., B.S.; Beta Alpha Psi, Marketing Club, V.P. of Parachute Club.

**HORTON, G.** Psychology, Bachelor of Arts; Hobbies - Sewing, Singing, Interests - Going to Graduate School, Becoming a Clinical Psychologist.

**HOUSE, J.** Accounting, B.S.; Member of Tau Kappa Epsilon, Intramural Sports.

**HOWELL, S.** Chemistry; Tennis, Swimming, Antiques, History.

**HUDGENS, G.** Accounting, B.S.

**HUGHES, JR., J.** Finance, Business Administration, B.S.; Who's Who in American Colleges and Universities, Student Representative - School of Business Undergraduate Studies Committee, Student Representative - Student Policy Committee.

**HUMPHREY, E.** Social Work, B.S.W.; Skating Reading, Cooking, Gardening, Organizer of UMSL Sociology Club, Member of UMSL Social Work Club.

**HUTSON, J.** Business Admin., B.S.; UMSL Student Senate, UMSL Student Affairs Committee, Member Zeta Tau Alpha Sorority, UMSL Intramural Sports.

**IMMER, E.** General Business, Business Administration; President - UMSL Chorus 1977-1978, Member - Accounting Club.

**IMMER, M.** Bus. Adm., B.S.

**IRWIN, C.** Chemistry, B.S.; Natural Sciences, Guitar.

**JACKSON, JR. F.** Business Administration, Bachelor Science.

**JAMISON, K.** Special Education; A member of MST.A.

**JASCHEK, W.** Speech - Communications, B.A.; Editor, "UMSL Current", University Players, UMSL Senate, Student Affairs Award, Deans List, Dr. Pepper Defense

League, UMSL Trivia Champ, Out to Lunch Bunch "QUACK!"

**JOHNSON, D.** Business, B.S.; Intramural Basketball & Raquetball, Golf, Accounting Club 1978.

**JOHNSON, G.** Admin. of Justice, B.S.; Music, Photography, Sports, and Rehabilitating Houses.

**JONES, T.** Philosophy - History, B.A., B.A. (Dual); Chairman Programming Board, United Special Service Community Award, Future Plans are to Write the History of Vanderventer.

**JONES, T.** History, B.A.

**KAFOURY, M.** Business, Bachelors; On Dean's List Entire Stay at UMSL, Accum. GPA 3.8, Received Scholarship Award all 8 Semesters from UMSL.

**KEDLEY, D.** Special Education, B.S.

**KELLEY, J.** History, B.S.; Omega Psi Phi, Basketball, Tennis, Swimming.

**KESZEL, M.** Accounting, B.S.; Dean's List.

**KEYSER, R.** Speech Communication, Bachelor of Science; Sports.

**KIMMICH, P.** Elementary Education, Bachelor of Science; Dean's List, Kappa Delta Pi, Racquetball, Water Skiing.

**KLAGES, W.** Administration of Justice, B.S.; Central Council, Senate Committee.

**KLINGLER, G.** Marketing, B.S.; Member of Alpha Phi Omega, Central Council Representative.

**KOSFELD, B.** Accounting, B.S.

**KROPF, S.** Elem. Ed./Early Childhood, B.S.; Deans List, University Scholar.

**KRUSE, M.** Bus. Ad. (Acctg.), B.S.; University Scholar, 1977-78.

**KUHN, T.** Accty., B.S.; Phi Kappa Psi Fraternity.

**KULAGE, S.** Biology, B.S.; Swimming, Reading, Writing.

**LAMB, V.** Elementary Ed., B.S.; Member A.D.H. Association.

**LANDOLT, J.** Accounting, Business.

**LEE, B.** Business Administration, Bachelor of Sciences; Member of United.

**LEHDE, M.** Economics, B.A.; Tennis, Softball, Swimming, Shooting, Fishing, Church Youth Group Counselor.

**LICAVOLI, J.** Accounting, B.S.; Beta Gamma Sigma.

**LONG, M.** Administration of Justice, B.S.; Skydiving, Big Game Hunting, Alligator Wrestling, Belly Dancing and Making up Stories.

**LOVETT, M.** Mathematics, B.A.; Central Council, Math Club.

**LUM, K.** Business, B.S.

**LYDON, M.** Political Science, Bachelor of Arts; Member of Sigma Nu Fraternity (Nu Chapter), Dean's List, Pi Sigma Alpha Honor Society, University Scholar, Summa Cum Laude.

**LYLES, A.** Social Work, B.S.W.; Tennis, Bowling, Sewing, Poetry, Drawing, Community Development, Political Awareness, Chairperson Labor & Industry NAACP.

**MARCIN, B.** Accounting, Business Adm., B.S.; Varsity Intercollegiate Women's Softball Team, Accounting Club.

**MASONIV, D.** Business Administration, Bachelor; Epsilon Beta Gamma Fraternity, Marketing Club.

**MATHERLY, J.** History - Art History, B.A.

**MAYNARD, A.** Psychology, B.A.

**MC CLUSKEY, J.** Administration of Justice, Bachelor of Science.

**MC EACHERN, J.** Education, B.S.

**MC KENZIE, K.** Arch. Eng., B.S.; Mathematics Teaching Fellowship, IKA Fraternity, Interests: Photography, Solar Energy.

**MAMERTEN, J.** Biology; Swimming, Tennis, Baseball.

**METZGER, K.** Marketing, Business Administration; Dean's List, Marketing Club.

**MILLER, A.** Art History, B.A.; Like Sports, Interests in Visual Arts, Painting, Sculpture, etc. Literary Interests, Future Plans Graduate School.

**MILLS, J.** Speech Communication, Bachelor of Arts; 1976 Elected Member of Student Council, 1977 Elected Member of Student Senate, 1976 Forensics (Novice Debate) Winner in K.C. Mo., Member of Pasadena Player, Agent & Management for Rich Hall "An Obscure Comedian".

**MILNER, C.** Music Education, B.M.E.; Bachelor of Music Education, Clarinet, Children's Choir Director, MENC (State Officer), Baptist Student Union.

**MOHAN, D.** Political Science, Bachelor of Arts.

**MORGAN, C.** Business, Accounting, B.S.; B.A.; Accounting Club, Beta Alpha Psi - Honorary, Councilman - City of St. John, Deputy Mayor, Engineers Club - Columbia, Outstanding Young Woman of the Year 1976.

**MORGAN, J.** Psychology, B.A.; Special Children, Reading.

**MORRIS, T.** Marketing, Bachelor of Science.

**MORROW, A.** Business, B.S.; Softball.

**MOSES, P.** Administration of Justice, B.S.; Modeling, Dancing, Hopes of Becoming a Criminal Lawyer.

**MOSS, G.** Math, B.S. in Applied Math.; Member and Former president of the UMSL Baptist Student Union, Winner UMSL Math Contest '75, 2nd place '77.

**MURRAY, T.** English, B.A.; Dean's List, Curator Freshman Scholar, University Scholar, Graduate Summa Cum Laude, Writing Lab Tutor.

**NAPOLI, J.** Business, Bachelor.

**NAUMANN, K.** Moth, B.S. Education; A Member of SMSTA.

**NEEDHAM, M.** Social Work, B.S.W.

**NICHOLS, S.** Special Education, B.S.; Deans List 3 Years, Member M.S.T.A., Member Kappa Delta Phi.

**NICKEL, D.** Business Administration, B.S.

**NOLTE, W.** Business, B.S.

**OLSON, M.** Administration of Justice, B.S.; R.O.T.C. Army, Activity, Swimming.

**ONDER, T.** Finance, Business Administration, B.S.; National Honor Society High School and College, Honors Graduate M.C.C., Private Pilot, Beta Gamma Sigma.

**PASCALL, L.** Special Ed., B.S.; Studing the history of American Social and Intellectual Development.

**PERL, C.** Business, Finance, B.S., B.A.; UMSL Accounting Club, Economics Honorary Fraternity, Dean's List.

**PERSOV, K.** Accounting, B.S., B.A.; Skiing, Dean's List, Being Outdoors, Finally Receiving a B.S., B.A. after Years of Evening Classes.

**PFLEGER, A.** Accounting, B.S.; Honor Graduate, Valley Jr. College, Accounting Club - UMSL.

**PINA, L.** Social Work, Bachelor.

**PLANELL, E.** Accounting/Management, Bus. Admin.; Accounting Club, Marketing Club, Junior Achievement Advisor.

**PLACHT, J.** Accounting, Business Administration; UYA Program, I am currently working for a CPA firm.

**PLUT, C.** Business (Accounting), B.S.; Accounting Club.

**POZZO, M.** Chemistry, B.S.; Vice President of the Chemistry Club.

**PRIBBLE, M.** Accounting, B.S., B.A.; Navigators, Keeping up with Mad Pace of UMSL.

**PRICE, W.** Political Science, B.A.; Was elected to the Student Court for the Fall Semester of 77.

**QUINTON, JR., J.** Urban Affairs, B.G.S.

**RATH, R.** Chemistry, B.A.

**REBBE, N.** Biology, B.A.; 4 Year Letterman - Cross Country.



**RECK, J.** Finance, B.S.; Beta Alpha Psi, Beta Gamma Sigma, Accounting Club, Computer Club.

**REED, P.** Accounting, B.S.; Executive Council, Baptist Student Union, Beta Alpha Psi Prospective.

**REINISCH, N.** Accounting, Bachelor of Science.

**RICHARDT, J.** Psychology, B.A.

**ROACH, D.** Gen. Studies, B.A.

**ROBERTS, P.** Accounting, Business Admin.; Beta Alpha Psi - Officer, Deans List, Baptist Student Union.

**ROBINSON, P.** Chemistry, B.A.; UMSL Undergraduate Analytical Chemistry Award, University Scholar, Deans List, Music, Raquetball.

**RODEMANN, P.** Elem. Ed., B.S.; Enjoy Working with Young Children, Hope to be Teaching Elementary School Beginning in Sept. 1978.

**ROEMERMAN, JR., R.** French, B.A.

**ROSS, E.** Social Work, B.S.W.; I Love to Play Tennis, Home Decorating, Gardening, Above All I Enjoy People.

**ROTHWEIER, M.** History/Soc. Studies, B.S. Secondary Education; Intramural Volleyball 1974-75, Teaching Assistant Geology, Summer '77.

**RUBIN, B.** Accounting, Business Administration, Bachelor of Science.

**RUDOLPH, L.** Marketing, B.S.; V.P. Marketing Club.

**RYAN, J.** English, B.A.

**SAGO, C.** Psychology, B.A.; Delta Zeta Vice President, Sorority Song Leader and Scholarship Chairman, Inter Greek Council Representative.

**SCHAEFER, E.** Anthropology, Spanish, B.A.

**SCHIMWEG, C.** Education, Sec. Ed. in Hist.

**SCHENCK, C.** Special Ed., B.S.; Special Education, Kappa Delta Pi.

**SCHLEICHER, J.** Special Ed., B.S.; Enjoy People, Dressmaker.

**SCHNEIDER, M.** Elementary Ed., B.S.; Photography, Soccer, I Finally Made It!

**SCHRADER, D.** Marketing, Business; Marketing Club, Biking, Refinishing Furniture.

**SCHULER, R.** Marketing, B.S.; Pi Kappa Alpha, Beta Gamma Sigma, Marketing Club, University Scholar, Dean's List, Tennis.

**SCHULZ, L.** Business, B.S.

**SCHURWAN, E.** Business (Finance), Bachelors; Teaching Aid at St. Mary's Special School, Nurse's Aid at Villa Gesu, Ceramics, Sports, Music.

**SEHR, C.** Education, Elementary, B.S.; Alpha Xi Delta.

**SHANNON, A.** Psychology, Bachelor; Interested in Poetry.

**SHELLEY, P.** Secondary Education, Bachelor Science; Member Phi Epsilon Kappa and MAHPER, Member - UMSL Varsity, Field Hockey, Basketball, Softball & Tennis Teams, Interests - Camping, Canoeing & Working with Handicapped.

**SHREWSBURY, J.** Political Science, B.A.

**SIGILLITO, K.** English, B.A.; Golf, Literature, Women.

**SKYLES, P.** Bus. Admin., B.S.; Beta Alpha Psi Acctng. Fraternity, Accounting Club, Dean's List.

**SMITH, E.** Special Education, B.S.; Special Ed. Major, History Teacher, Elem. Ed., Hope to be a Professional Teacher.

**SMITH, R.** Accounting, B.S.; Beta Alpha Psi, Accounting Club.

**SNARRENBURG, C.** Elementary Educ., Bachelor of Science; Dean's List, Taylor University in '74, Needlework, Travelling, Going to Football & Baseball Games.

**SNOWBARGER, D.** Business Admin., Bachelor of Science; Charter Member of Alpha Sigma Lambda, Magna Cum Laude.

**SPANN, S.** Social Work, Bachelor of Social Work.

**SPEIER, B.** Business Administration (Finance), B.S., B.A.; Delta Zeta Sorority, Cheerleader, Central Council Treasurer, Representative, U. Center Advisory Board, University Senate, Student Affairs Award, Gymnastics and Dancing, Skiing.

**STANLEY, D.** Chemistry, B.S.; Associate Member of the American Chemical Society, I Finally Made It!

**STAPF, J.** Marketing, Mgmt., Business; Great UMSL Ski Trips to Winter Park, Racketball, Volleyball, Day School, Night School, Summer Products, In Love.

**STEFFENS, T.** Accounting, B.S.; Accounting Club.

**STEINBRUEGGE, C.** Physical Education, B.S.

**STEWART, S.** Secondary Teaching, B.S.

**STOCK, M.** Business Admin., B.S.; Beta Alpha Psi, Accounting Club, Interests: Bowling, Needlepoint.

**STORY, J.** Administration of Justice, Bachelor of Science; Freshman Curator Scholar 1974, University Scholar 1975, 1976, 1977, Deans List.

**STROETKER, J.** Psychology, B.A.

**STROUD, G.** Elementary Education, B.S.; Playing the Piano, Sports, An All Around Neat Kind of a Guy.

**STUCKEY, K.** Business Administration, Accounting, B.S.; Scuba Diving, Skiing, Swimming, Bowling.

**SUCHER, M.** Administration of Justice, B.S.; Vice President Missouri Ice Hockey Officials Association, High School and College Referee.

**TABACHIK, D.** Accounting, B.S., B.A.; Accounting Club, Dean's List Spring 75.

**THEISS, G.** General Studies, B.G.S.; AFROTC, Tennis, Swimming, Dean's List.

**THIELE, L.** Psychology, B.S.; Delta Zeta Sorority.

**THOMANN, D.** Psychology, B.A.

**THOMAS, E.** Bus. Admin., B.S.

**THOMPSON, L.** History, B.S.; Alpha Sigma Lambda.

**TIMMERMAN, D.** Chemistry, Bachelor Science.

**TOWLER, E.** Social Work, B.S.W.; Mother, Foster Mother, Family Counseling, Dean's List, Social Work Club, Student Assistant, Notary Public, Legal Secretary, Citizen Deputy Juvenile Officer, A.A. - Meramec Community College, Phi Theta Kappa, Honorary Member Big Brother Association.

**TRANKLE, J.** Marketing, Business Administration; Member of UMSL Marketing Club.

**TRELZ, D.** Psychology, B.A.; University Scholar.

**TRIPP, R.** Accounting, Bus. Adm., B.S.; Accounting Club, American Management Society, Intramural Softball, Tennis.

**TSE, S.** Business Administration Accounting & Finance, B.Sc.; Dean's List, University Scholar.

**TUCKER, D.** Administration of Justice, B.S.; Modern Dance Troupe, Pearl Club, Volunteer Probation

Officer.

**TURNER, K.** Psychology, B.A.; Music, People, Art, Literature and Films.

**UEBINGER, E.** Administration of Justice, B.S.

**ULDALL, P.** English, Bach. of Arts; Concrete Poetry, Drama, Fruit Cakes, Ad Lay-out, Photog., Years of Marriage, Bijou.

**UNGER, G.** Physical Ed., Education; Nominee for Who's Who Universities, Pres. Student Action Council - M.A.H.P.E.R., Assistant Intramural Dir., I Love Kids, I Love to Meet People. Recreation Supervisor & Playground Supervisor, Competitive Volleyball & Softball.

**VALENTINE, S.** Elem. Ed., B.S.; Tennis, Intramural Hoc-Soc, Skiing, Backgammon, Art, I Would Like to Thank My Parents for Making my Dream of College Come True.

**VALENZUELA, JR., E.** Finance, B.S.; College Republicans, Knights of Columbus, AIESEC International, Finance Club.

**VESPERENY, L.** Business Administration, Bachelor of Science.

**VIVIRITO, P.** Elementary Ed., B.S.

**WAGENER, E.** Administration of Justice, B.A.; Sports.

**WATTS, C.** Marketing/Mgmt., Business; Pi Kappa Alpha Fraternity, UMSL Student Body President, UMSL Senate, Central Council, S.A.I.L., Curator's Scholar.

**WEHRLE, T.** Physical Education, Bachelor of Science; 4 Yrs. Varsity Basketball, 3 Yrs. Varsity Softball, 3 Yrs. Varsity Field Hockey, 2 Yrs. Varsity Tennis, Phi Epsilon Kappa Secretary.

**WEHRLE, M.** Speech - Communications, Bachelor of Arts; Central Council 3,4, Yearbook Editor 4, KWMU Student Staff 2,3, Student Activities Ski Trip 1,2,3, Special Thanks to Tom.

**WELSH, J.** Business Administration, Quantitative, B.S.; University Scholar, Dean's List.

**WERNER, S.** Business Administration, B.S.; Newman Center, UMSL Ski Trip 76,77,78, Student Activities Budget Committee, University Players, Dean's List.

**WESTBROOK, C.** Administration of Justice, B.S.

**WHARTON, S.** Biology, Bachelor of Arts; University Singers 74-78.

**WHITE, F.** Social Work, B.S.W.; B.S.W., Debate Club, Dean's List, Volunteer Work in Social Service Agencies, Social Work Club, Career Plans in Juvenile Ct.

**WILLIAMS, L.** Bus. Adm., B.S.; Bowling, Fishing, Hunting, Photography, and Ba . . . Ho . . .

**WILLIAMSON, D.** Elem. Ed., B.S.

**WINTERS, P.** Elemen. Ed., B.S.

**WITTENAUER, R.** Marketing, Business.

**WITTMANN, G.** Business, Bachelor's; Music, Sports.

**WOELFER, S.** Elementary Education, B.S.; Very Involved in Activities at my Church.

**WOHLMANN, D.** Bus. Adm., B.S.; Beta Alpha Psi.

**WOLFE, P.** Administration of Justice, Bach. of Science.

**WORKMAN, L.** Art History, B.A.; Alpha Xi Delta Sorority, 1975 Student Activities Award, AMACO Teaching Awards Committee.

**ZIMMERMAN, G.** Accounting, Business Administration, B.S.; Member Beta Alpha Psi.

