

8-26-1991

## Current, August 26, 1991

University of Missouri-St. Louis

Follow this and additional works at: <http://irl.umsel.edu/current1990s>

---

### Recommended Citation

University of Missouri-St. Louis, "Current, August 26, 1991" (1991). *Current (1990s)*. 52.  
<http://irl.umsel.edu/current1990s/52>

This Newspaper is brought to you for free and open access by the Student Newspapers at IRL @ UMSL. It has been accepted for inclusion in Current (1990s) by an authorized administrator of IRL @ UMSL. For more information, please contact [marvinh@umsel.edu](mailto:marvinh@umsel.edu).



# EXTRA!! EXTRA!!

## ORIENTATION ISSUE

# The CURRENT

UNIVERSITY OF MISSOURI- ST. LOUIS

## UMSL Starts Smoke Free

by Max Montgomery  
news editor

Smoke-filled hallways and overflowing ashtrays are things of the past on the UM-St. Louis campus. Since June 1, smokers have been forced to drag themselves outside to fulfill their nicotine cravings.

On that Saturday, the university's new smoke-free campus policy went into effect, prohibiting smoking throughout all campus buildings.

All four University of Missouri campuses are currently implementing and following through with similar no-smoking policies, following a decision of the Board of Curators.

The program, which was implemented for health reasons, is being phased in at various campuses, said Bob Samples, acting director of communications for UM-St. Louis.

Under UM-St. Louis' policy, students, faculty and staff are prohibited from smoking any type of tobacco inside any campus building. There are no designated indoor smoking areas.

Students and faculty members interviewed earlier said they supported the policy, although many conceded it would be an inconvenience for smokers.

"I think it will be a definite help for all of those students who don't like smoking and feel offended by other persons infringing upon our rights to have a smoke-free environment," Doug Rambaud, 24, a senior majoring in history, said.

Rambaud said he doesn't have a problem with people who smoke as long as they don't do it in a manner in which is irritating, like someone blowing smoke in his face.

One University Grounds Department employee, who wishes to remain anonymous, said she welcomed being able to eat in the cafeteria without breathing smoke. She added that she was not bothered so much by walking down a smoke-filled hall.

Joan Wykoff, a clerical worker in the School of Arts and Sciences Dean's Office, said she is thrilled about the new policy.

"I'm extremely happy. Only one person in my office smokes and they smoke probably two packs a day," Wykoff said. "That's all I breath."

No formal penalty has been established for violators of the policy, Samples said, adding that he doesn't think there will be many problems.

**"I think it will be a definite help for all of those students who don't like smoking and feel offended by other persons infringing upon our rights,"**  
-Doug Rambaud, senior

## Building Blocks for Education



Photo: Nicole Menke

Layne Thompson, 4, of St. Louis, playing with blocks at the University Child Development Center on South Campus. Layne is the daughter of Lisa Thompson, supervisor of preschool at the Center.

## A Look Back

## UM-St. Louis Campus Is Rich In History

The 128-acre parcel of land on which the campus sits, began as the old Bellerive Country Club, a playground for its affluent members.

They swam in the lake, walked the golf course, and paraded through the immaculate clubhouse during summer dance. The course itself was formidable enough for use in deciding two Western Amateur Open golf championships (1949 and 1953).

However, desiring to escape the spreading urban sprawl of St. Louis County, the membership of the club moved their facility to its present location at Ladue and Mason roads.

In April, 1958, with difficulties in selling the old land mounting because of Bellerive city ordinances, the land was offered to the Normandy School District.

A bond issue was presented to voters on September 30, 1958, and passed 3,241 to 1,547. The bonds generated sold quickly, and on February 13, 1959, the school district acquired title to the property.

As the county club began its withdrawal,

the Normandy educators surveyed their needs and goals. Discovering a substantial interest among the junior and senior classes at Normandy and other high schools, the district established the University of Missouri-Normandy Residence Center. UM agreed to pay the faculty and provide a library; the school district would furnish an administrator and supplement supplies and maintenance.

The first classes held at the infant university were on September 14, 1960. Four full-time faculty members taught 215 freshmen students. C.E. Potter was installed as the first administrator, and he hired eight part-time instructors to boost instructional capabilities.

One of the Normandy educator, Ward E. Barnes was influential in establishing UM-St. Louis. Barnes, a St. Louis educator for over 35 years, was instrumental in passing the bond issue.

During those early years, Barnes was a driving force behind increasing enrollment and the curriculum of the

university.

UM President Elmer Ellis strongly desired that the University of Missouri expand the facility to a four-year branch of the UM system.

Barnes, worked with Dr. Ellis, a close friend, and changed the dream into a reality.

Barnes recalled getting a phone call from Ellis one Saturday morning: "Ward," he said. "Do you really think you can get 100 students to enroll in that program you're setting up?"

And he replied, "Elmer, I really think we will."

In 1961-62 enrollment was over 400 students, and discussions began.

Ellis offered the Normandy School District \$60,000 for the Residence Center, but a dispute over the bidding process necessary in state land transfer stalled Ellis's attempts of acquisition.

Considerable lobbying by Ellis, the UM Board of Curators and Gov. John Dalton sparked editorial support from the St. Louis press, who compared the local situation to Kansas

## Welcome From The Chancellor

As chancellor of the University of Missouri-St. Louis, I would like to welcome both new and returning students to the University. We have been very busy this summer and many important changes have taken place.

As you walk across campus, you can't help but notice all of the construction taking place. On the north campus, the Metro Link Light Rail tracks are being laid and a light-rail station is being erected. Construction also has begun on our new Computer Center Building just north of the quadrangle, which should be finished next July. The Computer Center Building will enhance our efforts to computerize the entire campus and ensure that students, faculty and staff become computer literate.

A computer lab, made possible by a donation from AT&T, was unveiled this summer. It is one of the largest and most comprehensive open student computing labs in the nation. AT&T donated \$323,000 worth of equipment to UM-St. Louis

as part of their University Equipment Donation Program.

A \$10 million proposal for a Center for Molecular Electronics at the University has been approved by Congress and is awaiting President Bush's signature. The proposal includes \$5 million for a new building and \$5 million for advanced research equipment.

Another new development is the approval of funding for the undergraduate engineering program. Recently, the curators approved \$450,000 of the \$1 million earmarked for engineering at UM-St. Louis to be released. This means that undergraduate classes in mechanical and electrical engineering will be offered in January.

With all of these new improvements taking place, UM-St. Louis is a very exciting place to be this fall. The faculty, staff and I welcome you to the University and wish you luck in this new academic year.

Blanche M. Touhill  
Chancellor



intramural sports programs.

The gregariousness of the earliest students is recorded by the Nov. 21, 1962 issue of the Tiger Club. A strong editorial urging the curtailment of drinking on campus, linked with a ban on card playing in the school's only cafeteria, attest to some of the issues of the day.

Evidently things were out of hand because the faculty handed 338 out of 551 students mid-term deficiencies. Administrator Potter also prohibited the wearing of bermuda shorts on campus, because they were not consistent with the school's dress code.

The infant university has come a long way since then. We now have over 20 buildings in the north and south campuses, with the new additions to the Thomas Jefferson Library and the new computer building.

The emerging university has become an integral part of St. Louis higher education, with seemingly unlimited room for growth.

This excerpt was taken from the 1988 Current Orientation Issue.



# Who's Who Around Campus



**Blanche M. Touhill**  
Chancellor



**Lowe "Sandy" MacLean**  
Vice Chancellor for  
Student Affairs

**HAVE IT ALL  
LIVE AT**

**SPRINGWOOD**

SPECIAL UM-ST. LOUIS RATES

1&2 BEDROOM APTS.  
NEWLY REMODELED  
OAK CABINETS  
CARPET & DRAPERIES  
ALL ELECTRIC  
CLOSE TO I-70, 170 & 270  
MINUTES FROM AIRPORT  
4222-A SPRINGDALE  
CALL 429-5609



**Donald H. Driemeier**  
Vice Chancellor for  
Academic Affairs

## STUDENTS

Do you like children?

Are you interested in  
Teaching in a  
Jewish setting?



If so, call Dale Schreiber at 727-2742  
and Central Reform Congregation  
can put you to work today.

**GOOD IMPRESSIONS**  
Academic WordProcessing  
Exclusively for Students and Professors

Good Impressions Offers:  
Letter Quality Inkjet Printing

Options to Proofread and Correct Errors  
in Grammar, Style, Usage, and Punctuation

Each Paper Returned with Analysis of  
Readability, Writing Strength, and  
Sentence Structure Recommendations

Reasonable Rates (.50-\$1.75 per page)

Quick Turn-Around

To improve the appearance of your papers  
(and possibly your grades), call 968-2365.

Good Impressions Count!

**Put your health  
in our hands—and  
save a buck too!**

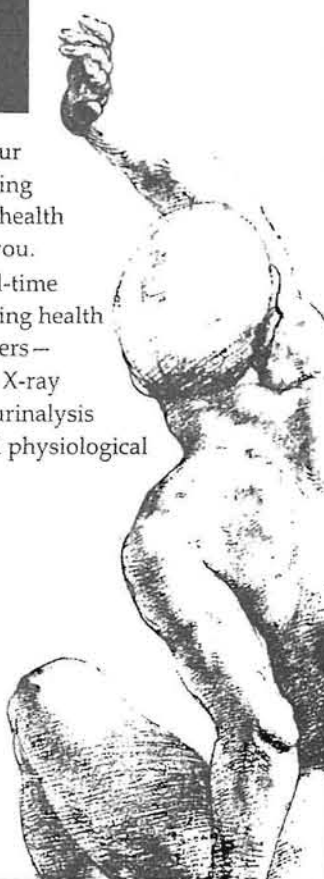
- Don't let aches and pains hurt your studies. ■ We want to keep you going full stride—with a special, low-cost health care program just for students like you.
- For a one-time \$150 payment, full-time UMSL students will receive continuing health care at our three Logan Health Centers—consultations, physical exam, initial X-ray study (if needed), blood count and urinalysis—plus chiropractic adjustments and physiological therapeutics—for a whole year.
- Find out more today.

Call 227-0903 and ask about  
College Chiropractic Care.

**LOGAN**  
Family Health Centers

1851 Schoettler - Chesterfield  
10164 W. Florissant - Delwood  
2909 S. Jefferson - St. Louis

Put your health in our hands.



**Laurence Schlereth**  
Vice Chancellor for  
Administrative Services

## STUDENTS SAVE 50%

Join Leonard Slatkin and the Grammy-award winning Saint Louis Symphony Orchestra for the exciting 1991-92 season, and **save 50%**! Season tickets start as low as \$31 for six concerts—that's less than the price of a movie!

**SEASON TICKETS  
ON SALE NOW!**

Call 533-2500 for more  
information and ask for a free  
student brochure

**Select Your Seat!**

You're invited to select your seat for the Symphony's 1991-92 season at Special Student Open House, Thursday, September 5, and Friday, September 6, 9 a.m. to 3 p.m. at Powell Symphony Hall, 718 N. Grand Boulevard at Delmar.

*Saint Louis Symphony Orchestra*  
Leonard Slatkin, Music Director and Conductor



**Billie Sue Schulze**  
Vice Chancellor for  
University Relations

# how to save money on Macintosh

Here's the deal: We've paired some of the most popular Apple® Macintosh® computers with some of the most popular Apple printers. Buy one of these combinations, and save big bucks. Got it? Good. Now get going.

This offer is available only for a limited time. See your authorized Apple campus reseller today for details.

And discover the power of Macintosh. The power to be your best®



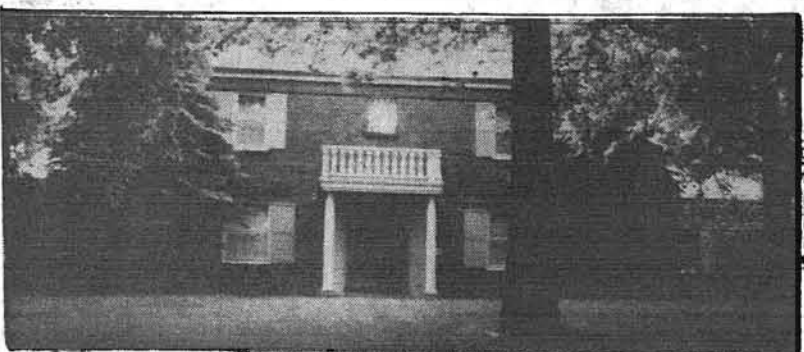
Macintosh Classic	Macintosh LC	Macintosh IIfx
<p>Save even more when you buy an affordable Macintosh Classic® computer with either an Apple StyleWriter or an Apple Personal LaserWriter® IS printer.*</p>	<p>Save even more when you buy a Macintosh LC computer—our most affordable color system—with either an Apple StyleWriter or an Apple Personal LaserWriter IS printer.*</p>	<p>Save the most when you buy a high-performance Macintosh IIfx computer with either an Apple Personal LaserWriter IS or an Apple Personal LaserWriter NT printer.**</p>
<p>Apple StyleWriter</p>	<p>Apple Personal LaserWriter IS</p>	<p>Apple Personal LaserWriter IS    Apple Personal LaserWriter NT</p>

\*Offer applies only to a Macintosh Classic with a built-in hard disk.  
\*\*Macintosh sold separately.

For further information visit  
the Office of Computing  
Room 103D SSB  
or call 553-6003

© 1991 Apple Computer, Inc. Apple, the Apple logo, LaserWriter, Macintosh, StyleWriter, and "The power to be your best" are registered trademarks of Apple Computer, Inc. Classic is a registered trademark licensed to Apple Computer, Inc.





70 BELLERIVE ACRES

Walk to work. Executive neighborhood convenient to Clayton and City of St. Louis. Lovely 4 bedroom, 3.5 bath family home, first floor family room and finished lower level, 3 fireplaces, large entry foyer. New price. \$149,000  
McLAUGHLIN REAL ESTATE 389-9998

# Take A Ride New Shuttle Success For UMSL

by Max Montgomery  
news editor

Inter-campus traveling will be easier this year thanks to the new shuttle bus which is used in addition to the vans already running the shuttle route.

The University said the fact that the new bus holds 18 passengers and that it is mechanically accessible to the handicapped students and faculty on campus make it unique.

Dietrich Smith, representative to the ad-hoc task force-campus disabled

accessibility committee, said earlier, that he is sure everyone is thrilled with the new vehicle.

"I am sure they are delighted and thrilled to death about the new accessibility," Smith said.

The bus, which cost \$36,000 was delivered to campus on Thursday, February 21, 1991. The next day the university held a small celebration in the Alumni Circle.

The first use of the bus was for transportation on March 1, when the St. Louis Symphony Orchestra performed on campus.

John L. Pickens, chief of police, said that according to the driver of the bus that night, it was very much appreciated by the riders.

"The fact that it holds 18 passengers is a plus," Pickens said in an earlier interview. "Take into consideration that we were running with the largest capacity of about 13 passengers. Now we can pick up five more passengers so we're able to move the people faster."

For information about the times and routes of the University shuttle service contact Student Affairs.

# Metro Link Construction Said To Be Worth Wait

by Robin Mayo and  
Max Montgomery  
Current staff

For many UMSL students, trying to enter the campus these days has become a strenuous task.

Since Metro Link Light Rail construction began in February, different parts of the campus and different campus roads have been closed, causing headaches for UMSL travelers.

Campus administrators said, in earlier interviews, that although the construction is an inconvenience, it will benefit the entire student body in the end.

Bi-State, developers of the Metro Link, purchased 31 passenger vehicles from Siemens Energy and Automation, Inc. of Germany, for \$45.4 million. They are approximately 89 feet long, and made of light weight, high tensile steel.

Each car will be climate controlled and have 72 fireproof, fiberglass seats with fabric inserts. There will also be room for an additional 100 comfortably standing passenger.

The words "light rail" may confuse people as to what exactly it is. It is a streetcar-type transit railway, constructed on city streets, very similar to a trolley car.

A feeder bus will carry passengers to and from transit stations. Opposed to buses, the light rail is more efficient and conserves more energy.

The overall cost of the light rail is \$288 million. The first groundbreaking ceremony was May 31, 1990 at North Hanley and I-70, where a concrete retaining structure was erected to contain the rail alignment.

It is hoped that Metro Link will be completed in 1993. It is to be an 18 mile, 20 station set up, from East St. Louis, Ill., across the Eads Bridge, all the way to Lambert Airport.

Stops will include Laclede's Landing, the Central West End, Forest Park, Page Ave., St. Charles Rock Rd., UMSL-St. Louis' North and South campuses, Hanley Road, and Berkeley.



Photo: Dave Bari

**ALL ABOARD:** The new UM-St. Louis shuttle is now in use on the regular shuttle route. The other vans still help with the flow of people needing rides.

Like To Write?

553-5174

Call Us!! We Mean It!

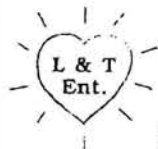
## STUDENTS

DO YOU NEED MONEY FOR COLLEGE?

Scholarship sources Guaranteed

"Education is a key to your future."

call or write



(314) 352-5988

Love and Truth Enterprises  
P.O. Box 771788  
St. Louis, MO 63177

The Lesbian and Gay Campus Organization  
LG/CO

Welcomes new and returning students to UMSL. If you're interested in meeting other Gay/Lesbian students, faculty, and staff; if you seek a positive Gay/Lesbian existence. You're not alone against the hatred, bigotry, fear, or harassment.

Give us a call  
553-6709

Have A  
Great  
Year!!

ZTA ΣΤΓ ΠΚΑ ΤΚΕ ΣΠ ΔΖ ΑΕΔ ΖΤΑ ΣΤΓ ΠΚΑ ΤΚΕ ΣΠ ΔΖ ΑΕΔ ΖΤΑ ΣΤΓ ΠΚΑ ΤΚΕ

# IT'S GREEK TO ME

Large selection of  
Fraternity and Sorority  
items

Located in **NorthWest Plaza**

Next to **Sears**

291-3911

10% off with this coupon

ΕΠΙ ΔΖ ΑΕΔ ΖΤΑ ΣΤΓ ΠΚΑ ΤΚΕ ΣΠ ΔΖ ΑΕΔ ΖΤΑ ΣΤΓ ΠΚΑ ΤΚΕ ΣΠ ΔΖ ΑΕΔ ΖΤΑ ΣΤΓ ΠΚΑ ΤΚΕ

Natural Bridge



UNIVERSITY OF MISSOURI-ST. LOUIS

If you go to school here  
Shouldn't you be living  
here?

Lucas Hunt Road

I-70



Now - more than ever -  
it makes sense to live at  
The Village

**LUCAS HUNT VILLAGE APARTMENTS**  
5303 Lucas Hunt Road at I-70  
381-0550

Special UMSL Discount

Bring this ad in for special gift

## UMSL Underground Equation

NEW MANAGEMENT  
+ NEW EMPLOYEES

BETTER FOOD &  
BETTER SERVICE

Tastes to try in the Underground include:

**Chester** Fried Chicken  
Entree Selections  
Build Your Own Salad Bar  
Grill Selections  
Pizza  
Mexican Selections



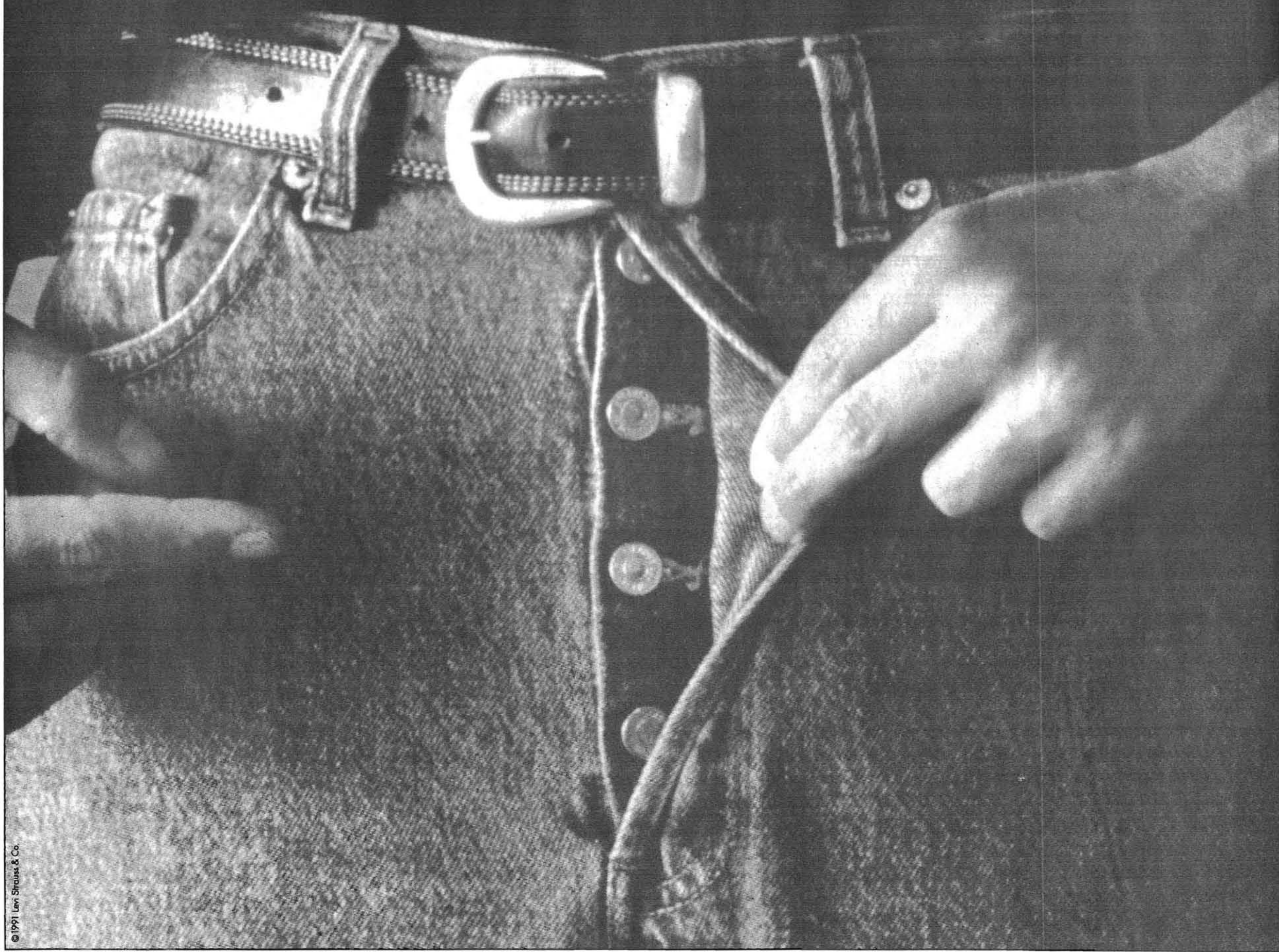
**FREE**  
16 OZ. SOFT DRINK  
WITH ANY LARGE SALAD PURCHASE  
COUPON VALID AUG.26-SEPT.6

VISIT OUR **TWO** CAFETERIAS  
--THE "UNDERGROUND" IN THE U.C.  
--MARILLAC CAFE ON THE SOUTH CAMPUS  
**SERVICE AMERICA**

REGULAR HOURS: 7:30 A.M.-7:00 P.M. MON.-THURS.  
7:30 A.M.-2:00 P.M. FRI.



# Unzip your jeans for 30 days.



© 1991 Levi Strauss & Co.

Here's the deal.

Buy a pair of Levi's button fly 501s  
and live in 'em for a month.

If you don't absolutely love them,  
just bring them back for a full refund.

That's it. Guaranteed.

**501**





Photo: Nicole Menke

**BASKET CASE.....** Keara Witteried having fun while learning at the daycare center on South Campus. The daycare center makes returning to school a cinch for parents and is used as a learning tool for education majors who are going into daycare.

## On Campus Daycare Gives Parents A Break

Even though most students don't know it their is a south side to the UM-St. Louis campus the Marrilac campus houses things such as the School of Nursing, Education, Optometry as well as the Child Daycare Center.

On the Marrilac campus the daycare center is located in the South Classroom Building, just down the hall from the School of Nursing. It's main operation takes place in a renovated gym. There is an outside playground also.

Students get discounts when they put their child in the on campus

daycare. However, the center also accepts faculty's children and children from the outside.

Rates for the daycare depend on the number of hours and days you enroll your child. The children are put in with other children of their same age group and learn by playing and discovering.

During the day, the center accepts infants to children up to five years of age. While at the daycare center the children receive breakfast, lunch and a snack. The daycare center teaches social interaction which is vital to a

child's development.

The daycare center also has an evening program, in which they accept children age 2 to 12.

The center's hours are flexible.

Since the daycare is located on campus it is utilized as a learning tool for university students. Education majors specializing in early childhood development are allowed to observe the children and participate in the fun for their practicum hours.

For more information about the rates, hours, and particulars of the daycare center call 553-5658.

## Eye Care Center Keeps Students From Seeing Red

"Life is worth seeing" has been the slogan of the Optometry Eye Care Clinic, located on the UM-St. Louis South campus inside the optometry building.

The Optometry Clinic is an amazing service that students should not pass up. To non-students the clinic charges approximately \$24 for an eye exam. Students, However receive a 20% discount which brings the price into the \$19 range.

The price is cheap but the service is not. An eye exam last for about two hours so that the clinic can get to

know everything about the patients eyes. Such a thorough exam is also a plus to the optometry students that learn from experience while supervised by the optometry faculty.

The exam is not the only low price students will find at the eye clinic. Frames start at around \$12 and lenses at \$28.

Don't be fooled into thinking that because the price is low that the quality is too. The Optometry Eye Care Clinic is totally professional and carries name brand frames so you can look cool on a budget that's not.

Contact fittings and services are discounted too. The clinic has both hard and soft lenses and a large variety to make it possible to fit as many people as possible.

The clinic's prescriptions are filled by third and fourth year ophthalmology students who are overseen by doctors already holding their Doctorates in this field.

The clinic takes all ages of people and people outside of the university. The only criteria is that you call and make an appointment. You can do this by calling 553-5131.

Win Free Tickets To The Best Shows At Riverport Amphitheatre. Details In The September Editions Of *The Current*.

If you want to make your feelings about a special someone known to the whole world, why not place a classified ad in the *Current*. Classified ads are free to UMSL students, faculty, and staff. (OK, so maybe the whole world will not see it, but what do you want for free?)

The Current



# RIVERPORT Amphitheatre

Great Concerts. Great Times.

**SUNDAY • SEPTEMBER 1**

**TOM PETTY**  
and the Heartbreakers  
special guest  
**CHRIS WHITLEY**

**THURSDAY • SEPTEMBER 5**

**ROD STEWART**

**SATURDAY • SEPTEMBER 7**

PRESENTED BY  
**TARGET.**

**AMY GRANT**  
special guest  
**KIM HILL**

**PAUL SIMON**  
with featured soloist **Michael Brecker**

**SATURDAY, SEPTEMBER 14**

**Enjoy the Pavilion or Lawn at Riverport with Large Video Screens.**

**MICHAEL BOLTON**  
special guest **Oleta Adams**

**SATURDAY, SEPTEMBER 21**

**TICKET INFORMATION:** Reserved Pavilion and Lawn Seat tickets available at Riverport Amphitheatre Box Office and all TICKETS NOW locations, including: Famous-Barr and Blue Note Sports Shop locations, plus The Gateway Center, Mississippi Nights, and the Westport Playhouse Box Office. Tickets may be subject to convenience charge.

**EASY ACCESS!** 1 mile west of I-270 off I-70 at the Earth City Expressway South. All shows begin at 8:00 p.m. unless noted. Gates open 90 minutes before show time. No refunds or exchanges. Schedule subject to change. Performances rain or shine. No cans, coolers, bottles, glass containers, lawn chairs, umbrellas, cameras or recording devices permitted. No tailgate parties. For more information call the Riverport Hotline: (314) 968-1800. Produced by Contemporary.



**Contemporary Productions**  
CALENDAR

**AMERICAN THEATRE**

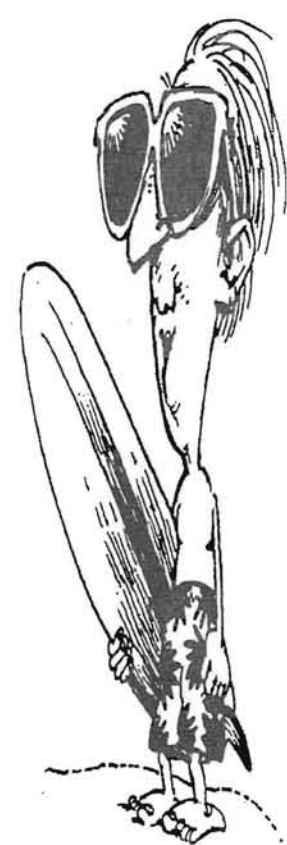
**BUSCH LIGHT**  
AMERICAN NIGHTS

**JESUS JONES**  
SPECIAL GUEST  
**NED'S ATOMIC DUSTBIN**

**Wed., Sept. 18 • 8:00 pm**  
**\$12.50 in advance**  
**\$15.00 day of show**

Tickets Available at The Riverport Box Office and all Tickets Now locations including Famous-Barr, Blue Note Sports Shop, Westport Playhouse Box Office, Mississippi Nights or call  
**DIALTIX 291-7600**  
Tickets may be subject to a service charge

Read the Current



and you too shall be way thin.



August 26, 1991

If you are interested in writing as a career or just want to do it for fun, the *Current* is the place for you.

Put your talent to work as a reporter for the *Current* in News Features Sports

call 553-5174 or drop by the office at Room 1 Blue Metal Bldg.

(You need not be an English major or be enrolled in writing classes to apply.)



# Music Department Has Something For Everyone

by Robin Mayo  
Associate Features Editor

Music majors and minors can find a wide variety of courses to choose from at UMSL.

Students who want to take a music course for pleasure will also find that UMSL offers an excellent program.

There are four degree programs in which a student can major.

- Bachelor of Arts in Music
- Bachelor of Music in Music Education
- Bachelor of Music with an Emphasis in Performance
- Bachelor of Music with an Emphasis in Music Management

The main building were most of the music classes are taught has an interesting background. At one time it was a convent.

The beautiful stained glass display still rests above the chapel, which is now used for band and choral practice.

Students can also minor in

music, which more students tend to do, majoring in fields like education or business, then using their music minor within those fields.

The UMSL student chapter of MENC (Music Educators National Conference) is an organization geared toward students involved with music education. This gives students a chance to get involved in extra curricular activities while fraternizing with other students.

The people involved in the music department comprise a small part of the campus as a whole.

"It's small, but it hasn't gotten worse. And there's room for more. We are eager to have students," said Dr. Leonard Ott, chairperson of the music department.

"It's a good department but unfortunately not enough people know about it, especially in the instrumental areas.

For some reason, people don't think that unless they're a music major they can come over here and participate, and they're more than welcome to come over. The



**GETTING INTO THE SING OF THINGS...**University Singers, Directed by Bruce Vantine, is one of musical ensembles available for students.

music departments would love to have them come over," said Laura Steger, President of the student chapter of MENC.

She said that if you've been in band throughout grade school and high school, then why not join?

Dr. Gregory C. Fox, assistant professor of music and educa-

tion says that the music department tries to promote itself in the *Current* and other types of media, but that it is a difficult task to increase the student awareness of the programs they have to offer.

"I think that the general student body is probably not very aware of what we have to offer over here. Part of it is the nature of a commuter campus, and we

are a bit isolated," said Dr. Fox.

"We have an outstanding music education program, and all of our faculty are exceptional."

New students and return students who have any interest in music are more than welcome to make that trip across Natural Bridge Rd. and see what the music department has to share with its students.

## Resume Expert On Campus

There's a new Resume Expert on Campus.

In Career Placement Services, 308 Woods Hall there is a computer program to solve your resume problems.

Resume Expert does the layout and design of the student's resume, allowing students to concentrate on resume content which is most important to employers.

Resume Expert makes updates easy since information is retained on the student's personal disk.

Resume Expert makes it possible for students to have multiple resumes targeted to different positions and employers.

Resume Expert will match job openings with student data, and print the student's Resume Expert Registration Resume from the Career Placement Services database.

Resume Expert is an easy to use tool that enables students to register with Career Placement Services and develop a professional typeset resume..... and more.

For more information, contact Career Placement Services, 308 Woods Hall, 553-5111

## Bader's ART and DRAFTING MATERIALS

**BACK TO SCHOOL SALE**  
starts August 19 thru Sept. 30, 1991

See our flyer for details. (Flyer will be distributed at your school)

**CONCORD VILLAGE**  
22 Ronnie's Plaza  
St. Louis, MO 63126  
(314) 842-0114  
HOURS: Monday-Friday  
10:00 a.m. - 9:00 p.m.  
Saturday 10:00 a.m. - 6:00 p.m.

**DOWNTOWN**  
1113 Locust  
St. Louis, MO 63101  
(314) 421-2870  
HOURS: Monday-Friday  
8:00 a.m. - 5:30 p.m.  
Saturday 9:00 a.m. - 1:00 p.m.

**CLAYTON**  
8007 Maryland  
St. Louis, MO 63105  
(314) 862-6980  
HOURS: Monday-Friday  
8:30 a.m. - 6:30 p.m.  
Saturday 9:00 a.m. - 5:30 p.m.

Toll Free  
1 (800) 421-2870

We have the  
largest supply  
of art and  
drafting material in the  
St. Louis area.

## EXPERIENCE IT...

### THE CURRENT

Positions open for copy editors,  
reporters, and ad constructionist.  
Call 553-5174 today!!

## WHY RENT AN APARTMENT?

WHEN SPACIOUS REMODELED DUPLEXES ARE NOW  
AVAILABLE BORDERING THE NORTHEAST UMSL CAMPUS!

- 2-3-4 Bedroom Duplexes
- Beautiful Hardwood Floors
- Large Finished Basement
- Mini Blinds
- Stove & Refrigerator

- Washer/Dryer Hookups
- Large Storage Area
- Off Street Parking
- Yard Space
- Cable TV Available

ENJOY TWICE THE SPACE  
AND TRULY WALK TO UMSL

Faculty And Students  
Call For Special Price

**ALLIANCE GROUP**  
522-6865



## The Wesley Foundation

The Wesley Foundation of the University of Missouri-St. Louis is the campus ministry sponsored by four denomination: The Presbyterian Church (USA), the United Church of Christ, the Christian Church (Disciples of Christ) and the United Methodist Church. United Methodist Pastor, Roger N. Jespersen, is the campus minister. Our office is just across Natural Bridge Rd. from the North Campus at Normandy United Methodist Church, 8000 Natural Bridge Rd. The telephone number is 385-3000.

Our programming includes cooperative events with other campus ministries, Bible Studies, opportunities for prayer and sharing, service projects, fellowship events, guest

speakers and many more opportunities for growth in faith and commitment. Roger Jespersen is available for pastoral care and conversation on a variety of issues of faith and life.

Special events coming soon include:

State Float Trip, Sept. 20-22, costing \$20

Regional Student Conference, Nov. 1-3, in Iowa City

Global Education Tour, Jan. 1-12, 1992, Costa Rica

Our newsletter "Gateway Connections" is sent free of charge to interested people. To be included on our mailing list, write to Roger N. Jespersen, 8000 Natural Bridge Rd., St. Louis, MO 63121 or call 385-3000.

## The Newman House

The Newman Center, located at 3200 Natural Bridge Rd., is sponsored by the Catholic Bishop of St. Louis. The organization promotes the fellowship of the campus community.

One of the things students can always count on is the Sunday evening mass at the Newman House at 8:00 p.m. On Wednesdays and Thursdays mass is usually in the University Center, room 226 at 12 noon.

The resident chaplain, Father Bill Lyons, has been with the Newman House since 1967.

Steve Konopke is Fr. Lyons associate chaplain. His goals are to speak with students and offer advice to problems, as well as trying to keep their social, physical, emotional, intellectual, and spiritual lives well balanced.

The Newman House is named for John Henry Newman, an Oxford scholar turned Cardinal in the Roman

Catholic Church. He died over 100 years ago, but his name continues on, proudly placed on many Newman center all across the nation. Cardinal Newman died at the age of 90, and he is considered to have earned the rank of Saint.

Beside helping on campus, the Newman House goes out into the streets of St. Louis, helping Karen House on Hogan Street prepare meals for the hungry twice a month. On Saturdays, in season, they help weather homes that are in need.

While students are at the center, they can do whatever they want; studying, reading, talking, or just to come and think. The center is open everyday from 9:00 a.m. to 3:00 p.m.

The phone number at the Newman House is 385-3455, which translates to FUL-FILL. Students are encouraged to stop by, regardless of religious preference.

## Critical Dates For 1991 Fall Semester

1. Friday, August 30, 1991  
(Close of Day)  
Last day any graduate student may enter a course for credit
2. Monday, September 9, 1991  
(Close of Day)  
Last day any undergraduate student may enter a course for credit
3. Friday, September 20, 1991  
(Close of Day)  
Last day any student may drop a course or withdraw from school without receiving a grade

4. Friday, September 20, 1991  
(Close of Day)  
Last day any student may place a course on satisfactory/unsatisfactory grading option.

5. Friday, November 15, 1991  
(Close of Day)  
End of twelve week period:  
"Except with the approval of the dean of the division, a student may not withdraw after the twelve-week period of the fall semester. In no case may a student withdraw after the completion of classes."

## LEARN TO SKYDIVE

# SKYDIVE ST. LOUIS

**324-3334**

In St. Louis **421-DIVE**



*The Division of Student Affairs*

## Student Services Make UMSL More Than Just Classes

### UNIVERSITY CENTER/STUDENT ACTIVITIES/ CAMPUS RESERVATIONS

267 University Center

Student Organizations  
Ridesharing Programs  
Off-Campus Housing  
Video Games  
Student Lounges  
Student Leadership Workshops  
Cafeteria & Vending

University Program Board: Concerts, Lectures, Films, Comedy,  
Special events.

Computer Resource Room  
Lost & Found

Seasonal Celebrations  
Meeting Room Services  
PX-Printing, Xeroxing & Layouts



### CAREER PLACEMENT SERVICES

308 Woods Hall

On-Campus Recruiting  
Current Job Listing  
Personalized Job Hunting Assistance  
Career Information Library  
Company Information

Job Outlook & Salary Information  
Video Tape Library

Cooperative Education Positions  
Internship Positions

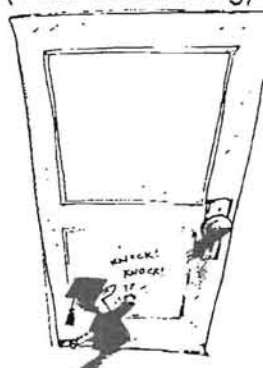
Resume Writing & Interview Skills Workshops  
Student Employment Program



### COUNSELING SERVICES

427 SSB

Personal Counseling  
Career Exploration and Interest Testing  
Personal Growth Groups  
Career Resource Center  
Computer Based Career Programs  
Computer Assisted Study Skills  
Stress Management  
Horizons (Peer Counseling) Workshops



### STUDENT AFFAIRS OFFICE

301 Woods Hall

Disabled Student Services  
International Student Services

### WOMEN'S CENTER

211 Clark Hall

Educational Resource Center Advocacy  
Information on Women's Network Services and Org.

Referral System

Short-term Counseling

Afternoon/Evening Programs

Drop-in Center

Library

### INTRAMURAL/ ATHLETICS

225 Mark Twain Building

#### INTERCOLLEGIATE:

Baseball  
Men's Basketball  
Women's Basketball  
Golf  
Women's Soccer  
Men's Soccer  
Softball  
Swimming  
Women's Tennis  
Men's Tennis  
Volleyball

#### INTRAMURALS

Basketball  
Football  
Racquetball  
Soccer  
Softball  
Swimming Pool  
Tennis  
Volleyball  
Weight Rooms  
Track



### STUDENT HEALTH SERVICES

127 Woods Hall

Information on Handicapped Parking  
Information on Student Health Insurance  
First Aid & General Health Consultations  
Wellness Program & Referral Services



### ADMISSIONS & REGISTRAR

101, 232, 209 Woods Hall

Admissions  
School/College Relations  
Student Recruitment  
Transcript Evaluation  
Registration  
Records-Transcripts  
Scholarships-Grants-Loans  
Financial Aid  
Identification Cards

*THE UNIVERSITY OF MISSOURI ST. LOUIS*

*CORDIALLY INVITES YOU TO ATTEND*

# THE GREAT BOOKBAG SALE!!!



10% OFF NOW TILL SEPTEMBER 11

Buy a Bookbag or Just Come In and Browse

The New York Times Best Sellers are 20% off.... Always

REMEMBER TO GET YOUR TEXTBOOKS BEFORE CLASSES END

*RSVP*

# THE BOOKSTORE

LOCATED IN THE LOWER LEVEL OF THE UNIVERSITY CENTER

Regular Bookstore Hours:

MON.-THURS. 7:30 A.M.-7:30 P.M.

FRI. 7:30 A.M.-4:00 P.M.

PHONE: 553-5763

OPEN AN ADDITIONAL HOUR  
UNTIL FRIDAY, AUGUST 30!

The Last Day to Return Books is September 9

(Books Must Be in Original Condition and Student Must Have Receipt)



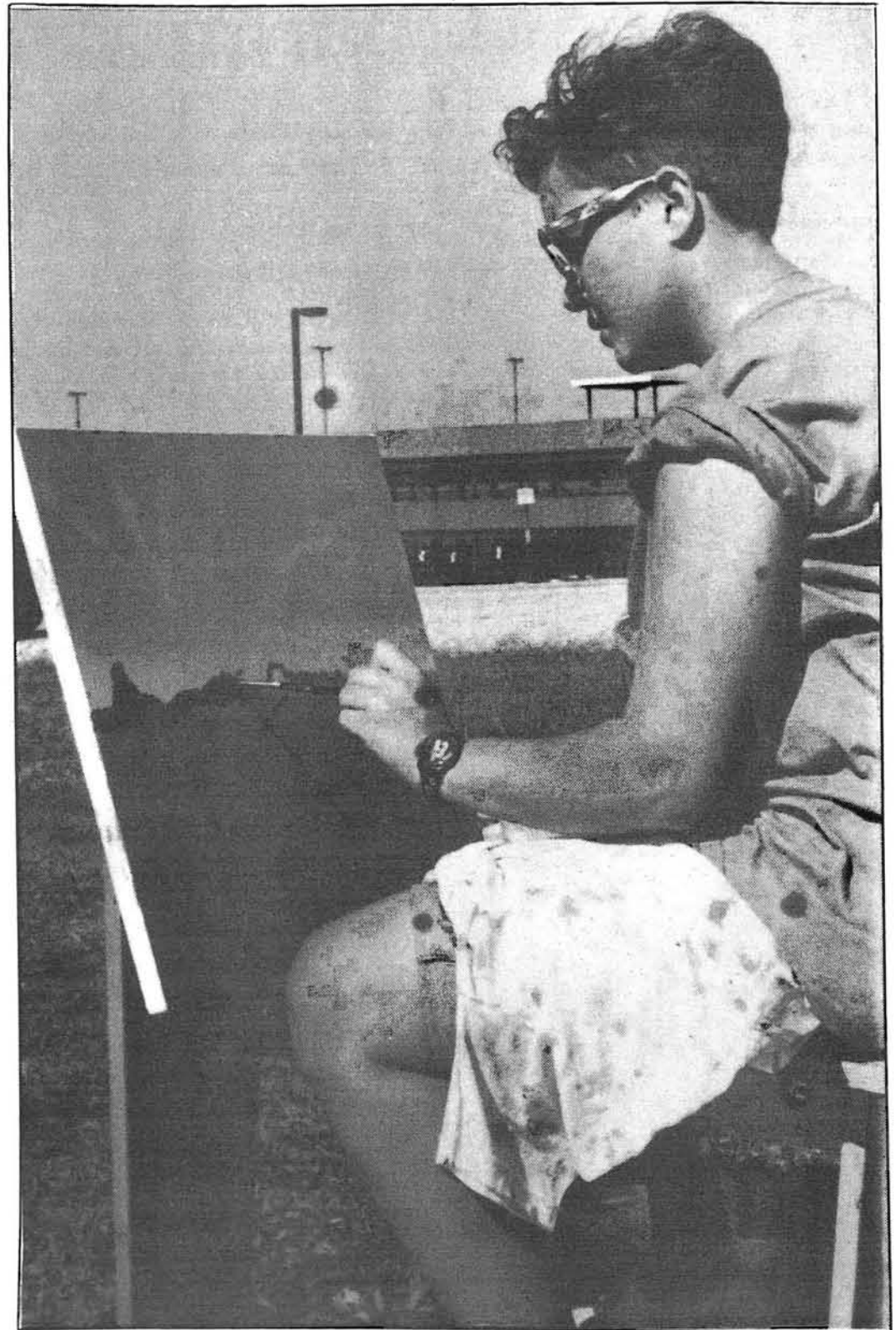


# TAKE A LOOK

August 26, 1991

ORIENTATION ISSUE

Page 9



Doing the Art Thing.

Photo: Fred Appel



Student Flips over  
**MIRTH  
DAY**

Photo: Dirk Fletcher

**UN**  
**ST.**  
**LOUIS**

Ground Breaking of the Computer Building.  
Photo: Nicole Menke



Student Studies in the Sun.

Photo: Jocelyn Arledge



Grounds Crew Rescues Student during Snowy Weather.  
Photo: Nicole Menke



Red Cross Blood Drive.

Photo: Dave Bari



**Graduation!**

Photo: Max Montgomery



**Campus View**



Blanche Touhill announced as Chancellor.  
Photo: Michelle McMurry



## Athletic Department Offers An Array Of Activities

While most of the UM-St. Louis campus is devoted to improving the mind, the Mark Twain Building is concerned with the rest of the body.

There are many activities available to students at UM-St. Louis for only a mere flash of an I.D. card.

The gymnasium consists of 8 basketball areas, 3 volleyball courts, 110 mile running path and 6 badminton courts. The balcony areas each include two basketball areas, one volleyball court and

two badminton courts.

If you like to pump iron and hate the expenses of joining a fitness club, the Mark Twain also has a weight room with various free weights and a Universal, Stair Masters, and Nautilus Machines. There are even classes in which proper use of the machines and weights are taught.



If you can't leave home with out your racquet the Mark Twain has four indoor racquetball courts, two 4-wall outdoor racquetball/handball courts and six out-

door tennis courts.

If running is your thing the Athletic Department offers and indoor running track, an outdoor fit Trail and Fit course.

The Mark Twain even has recreation equipment for various sports for your use. And once again you get all of this for only a flash of that card.

After your finished with your sport-ing endeavor shower in the locker room and then relax in the sauna or whirl pool.

OPEN RECREATION HOURS				Mark Twain Recreation Complex	
		GYM	SWIMMING POOL	Racquetball Reservations 553-5652	
Mon-Fri	12-2 p.m.		Mon\Wed\Fri 11 a.m.-2 p.m.	Equipment Check-out 553-5652	
Tues & Thurs	7-9:45 p.m.		Tues & Thurs 12-2 p.m.	Swimming Pool 553-5685	
Sat	12-7 p.m.		Mon-Thurs 6:30-10 p.m.		
Sun	12-5 p.m.		Sat 12-7 p.m.		
			Sun 12-5 p.m.		
		RACQUETBALL	WEIGHT ROOM		
Mon-thurs	8-9:30 p.m.		Mon-Thurs 8 a.m.-10 p.m.		
Fri	8:30 a.m.-6:30		Fri 8 a.m.-7 p.m.		
Sat	9 a.m.-7 p.m.		Sat 9 a.m.-7 p.m.		
Sun	12-5 p.m.		Sun 12-5 p.m.		

## The People Behind The Scenes...

After watching a good movie, little, if any, recognition is given to those behind the scenes. It's the actors and actresses who gain the fame and glory. The same is true with collegiate athletics. Several important people's contributions go unnoticed..



Chuck Smith  
Athletic Director

Charles G. "Chuck" Smith is in his 13th year at UM-St. Louis' first full-time athletic director. In 1979, Smith gave up the combined position of athletic director and head basketball coach that he had performed so well for 13 years at the University.

Smith started the UM-St. Louis program in 1966 when he assumed the dual role of athletic director and head basketball coach. Since then, no less than seven sports have sent teams or individuals to NCAA Division II National Championship.

In thirteen years, Smith's teams at UM-St. Louis compiled a record of 171 wins and 143 losses. Two teams reached national tournaments.



Jeff Kuchno  
Sports Information Director

Jeff Kuchno enters his third year as the Sports Information Director at UM-St. Louis. The 30-year old St. Louis native graduated from UM-St. Louis with a Bachelor of Arts degree in Communications as well as a writing certificate in 1984.

Upon graduation, Kuchno was hired as a programing specialist at American Cablevision of St. Louis, where he produced several community programs. Part of his duties included producing and directing UM-St. Louis basketball telecasts for one season.

Kuchno served as a sports editor with *Suburban Newspapers of Greater St. Louis* for 19 months before coming back to UM-St. Louis. He was sports editor at the *County Star-Journal* for seven months and the *North County Journal* for nearly one full year.

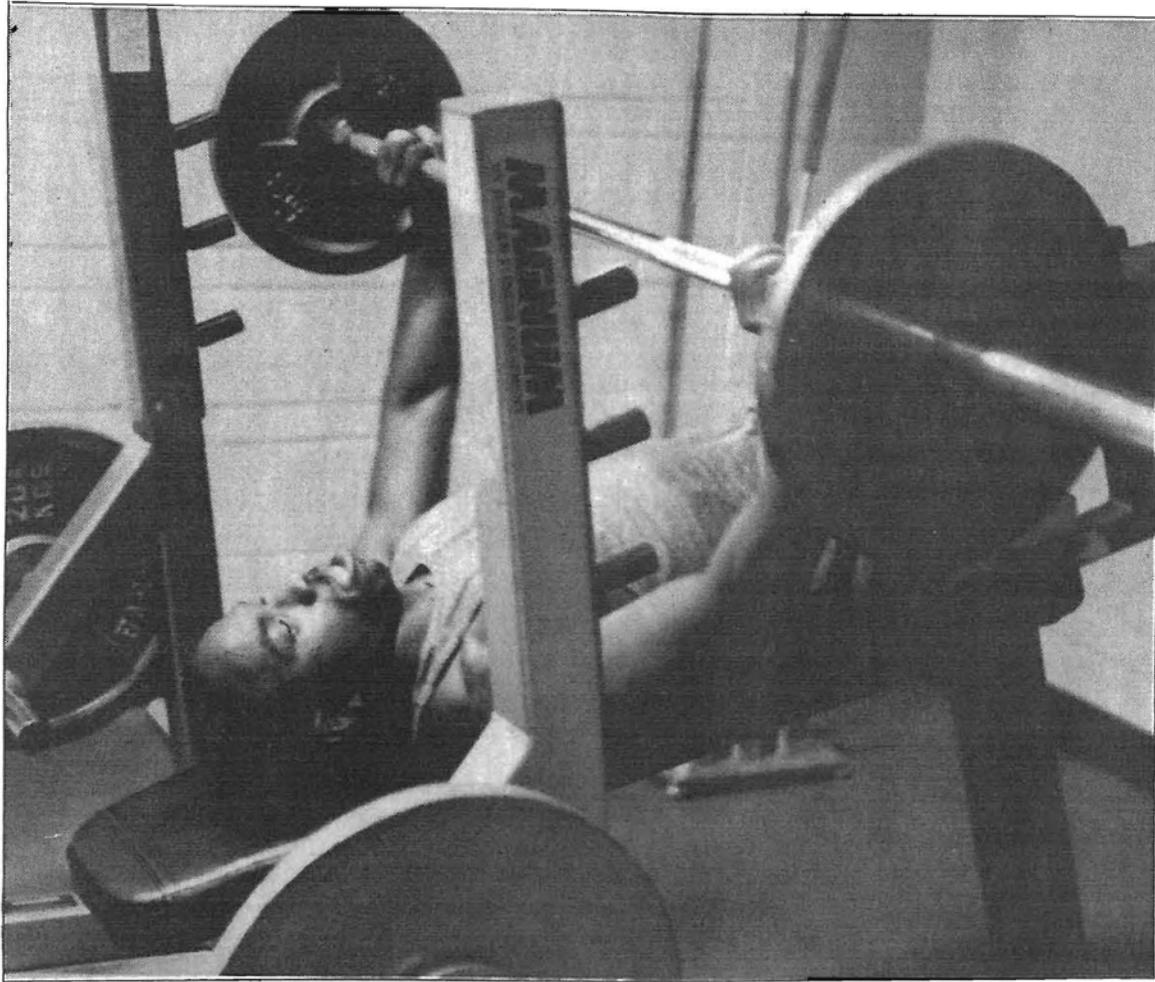


Photo: Kris Keussel

ONE. . TWO . . THREE. . LIFT: A UM-St. Louis student takes advantage of. the located in the Mark Twain Building.

## Fitness Clinics Available For Beginners

Does the word exercise bring flash backs of the 20 minute workout girls bouncing around like maniacs in their leg-warmers, to your mind? Well, theres more to exercise than a great leotard and leg warmers. Proper usage of exercise tools is the key and the UM-St. Louis Recreational Sports Wellness program has just what your looking for.

The Wellness

program is offering three types of fitness clinics for beginners starting Sept. 10.

Four Nautilus clinics will be offered.

Each clinic will teach basic Nautilus and exercise principles for the beginner.

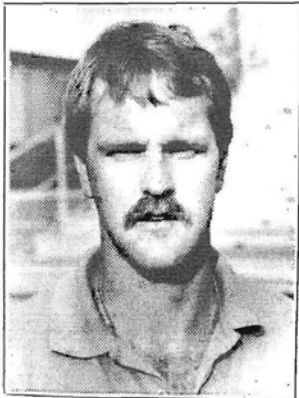
### Time Schedule For Fitness Clinics

AEROBIC MACHINES		
Oct. 21	12:00 p.m.	
Dec. 5	6:00 p.m.	
NAUTILUS MACHINES		
Sept. 10	6:00 p.m.	
Oct. 10	12:00 p.m.	
Nov. 4	6:00 p.m.	
Dec. 11	12:00 p.m.	
FREE WEIGHTS		
Oct. 16	6:00 p.m.	
Nov. 21	6:00 p.m.	

Two aerobic machine clinics are available.

Each clinic will teach the proper use of Lifecycles, Stair Master, Life Rowers, and Versaclimbers for the best cardiac and weight loss benefits.

For beginner to intermediate weight lifters two free weight clinics will be available. These classes are designed for people interested in building weight or size.



Tom Redmond  
Head Soccer Coach

Tom Redmond is back for his sixth season at UM-St. Louis. He acted as assistant to the late Don Dallas for the past five years and now takes the reigns as head coach.

A graduate of John F. Kennedy High School, Redmond was an All-American at Meramec Community College in St. Louis before heading to Indiana University. He was team MVP his senior year at IU and played in the Senior Bowl. He received his B.S. degree in Health and Physical Education in 1979.

After college, Redmond enjoyed a successful professional career. He played two years with the Chicago Sting of the NASL and two years with the Indianapolis Dare-devils of the American Soccer League.



Ken Hudson  
Women's Soccer Coach

Hudson, the 39-year old UM-St. Louis graduate has been a fixture on the UM-St. Louis scene since he came to the school as a freshman in 1970.

Hudson became women's field hockey coach in 1978. The Roasry High School graduate then began the UM-St. Louis women's soccer program at the club level in 1980 and moved it to the intercollegiate level in 1981.

The program go off to a great start with a perfect 6-0 mark as a club team and undefeated during the first 16 games of intercollegiate competition.

Hudson, who has produced eight All-Americans at UM-St. Louis, attended the Advanced National Coaching Academy last year and received a certificate from NSCAA.



Denise Silvester  
Head Volleyball Coach

In just four seasons, Silvester has compiled a 147-55 mark as head coach of the volleyball program at UM-St. Louis. That's an average of nearly 37 wins per season. Only a handful of coaches can boast of that type of success.

Silvester made an immediate impact at the school. She inherited a team in 1986 that was 9-34 the previous year and turned it into a 28-14 team that finished second in the Missouri Intercollegiate Athletic Association Conference Championships. After that smashing debut, she was named MIAA "Coach of the Year."

Silvester also serves as assistant athletic director at UM-St. Louis and oversees the women's athletic programs.

## Aerobics...

The UM-St. Louis sports department is sponsoring 'Fall Combo Impact Aerobics'.

The program will begin on Sept. 3 and continue through Dec. 13. The cost for Students is \$25. Faculty, Staff and Alumni receive the discounted price of \$40 and for all others the cost is \$80.

Classes will be instructed in the Aerobics Room of the Mark Twain Building.

Times are as follows:

Noon Class (A):  
Mon., Wed., Fri. 12-1 p.m.

Evening Classes (B):  
Mon., Wed., Fri. 5:30-6:30 p.m.

Evening Classes (C):  
Tue. & Thur. 5:30-6:30 p.m.  
Sat. 9:30 a.m.

To register for the aerobic classes contact the Recreational Sports Office at 203 Mark Twain Building or call 533-5124.



Hear no evil  
See no evil  
Speak no evil  
Just report it!



**SPORTS**

Write Sports For The  
**CURRENT**  
Call Tom at 553-5174





Photo: Nicole Menke

**DROP THE PUCK:** UM-St. Louis player (left) faces off against the opposing team during a game at the arena.

## Collegiate Ice Hockey Action

by Christine McGraw  
sports editor

The UM-St. Louis Ice Hockey Club will begin its season in mid October.

This is the first year for the club to play in the Central States Collegiate Hockey League (CSCHL). The team will play in the CSCHL Division II league.

The Hockey Club, which does not have a home playing arena, finds practice and playing time through local hockey rinks including the Arena.

The team is not completely formed and tryouts are set for Oct. 1 From 4:45 p.m. until 5:45 p.m. at the

Practices are scheduled on Tuesdays and Thursdays from 7:30 a.m. until 8:30 a.m. at the North county rink. And on Wednesdays from 7:30 a.m. until 8:30 a.m. at the South County rink.

Any one interested in playing, videotaping games, keeping stats during games, or cheerleading, please call Wayne Gholson at 521-6818, or Shelle Hassenforder at 524-2881.

**South Division**  
UM-St. Louis  
Washington University  
Meramec Community College  
Logan College  
UM-Columbia  
Kansas University



# Intramural Sports

## Test Your Skill

Take advantage of the many recreational opportunities you have by being a UM - St. Louis student, faculty/staff member or alumni. Intramurals are structured, competitive/cooperative sports, organized into leagues and tournaments for people of all skill levels. Individual, and team events provide divisions for men, women, and coed participation. If you like to meet people and compete in sports, take part in the Intramural program.

### How to Enter

1. Entry forms for all team and individual sports are available in the Rec Sports Office, 203 Mark Twain, 9 a.m. - 5 p.m., Monday through Friday.
2. Completed entry forms must be returned to the Rec Sports Office on or before the designated deadline.
3. A \$10 forfeit fee must accompany a team's entry form. This fee is a deposit which will be returned to the team following the sports play-offs, given that team has not forfeited a game prior to that point.
4. Individuals seeking a team may complete an entry form and will be placed on one shortly thereafter.

UM-ST. LOUIS FALL 1991

RECREATIONAL SPORTS

ROOM 203 MARK TWAIN 553-5125

INTRAMURAL ACTIVITIES	DEADLINE	BEGINS	DAYS	TIMES
WELCOME BACK SOFTBALL TOURNAMENT & BBQ: Fun!	Sep 13	Sep 15	Sunday	12noon
TENNIS SINGLES TOURNAMENT: Beg. Int. Adv	Sep 11	9/14,21	2 Saturdays	9:00am
COED VOLLEYBALL LEAGUES: Students,Fac/Staff	Sep 11	Sep 16	M/W	7-10pm
BOWLING DOUBLES: Ferguson Lanes/6-8wk League	Sep 11	Sep 18	Wed	2:30pm
GOLF TOURNAMENT: Students,Fac,Staff/9&18 Hole	None	Sep 20	Friday	9am-3pm
FLAG FOOTBALL LEAGUES: 7-Player/Mens,Womens	Sep 18	Sep 24	Tu/Th	2,3,4pm
PUNT, PASS, AND KICK CONTEST: Mens,Womens	None	10/1,3	Tu/Th	2-4pm
FUN RUN: 1.5 & 3 Mile Courses/Mens,Womens	None	Oct 1	Tues	12:30pm
SOCCER LEAGUES: 9-Man/Mens,Womens	Oct 2	Oct 7	M/W	2,3,4pm
TABLE TENNIS TOURNAMENT: Men's,Women's	Oct 2	Oct 8-11	Tu-Fri	To Be Arranged
VOLLEYBALL TOURNAMENT: 1-Night/Mens,Womens	Oct 22	Oct 23	Wed	7-11pm
RACQUETBALL CLINIC FOR BEGINNERS: One-Day	Oct 23	Oct 24	Thurs	12:30pm
COED HOC SOC LEAGUE: 9-Man Indoor Soccer	Oct 23	Oct 28	M/W	7,8,9pm
RACQUETBALL TOURNAMENT: 1-Week/Beg. Int. Adv	Oct 30	Nov 4-8	Mo-Fri	To Be Arranged
PICKLEBALL CLINIC: A Fun Paddle Sport; Easy to Learn	Nov 4	Nov 5	Tues	12:30pm
COED WALLYBALL TOURNAMENT: 1-Night/4 per Team	Nov 6	Nov 7	Thurs	6-11pm
PICKLEBALL TOURNAMENT: A&B Div/Mens,Womens	Nov 6	11/12-15	Tu-Fri	12-2pm
BASKETBALL FREE THROW CONTEST: Mens/Womens	None	11/12-15	Tu-Fri	11am-1pm
BASKETBALL HOT SHOT TOURNAY: Mens,Womens	None	11/12-15	Tu-Fri	11am-1pm

### Scheduling Procedures

Schedules will be made up before the beginning of the first contests for entire sport seasons. Team captains are responsible for picking these schedules up and informing

their players of game times.

### Awards

The winning team or individual winner in league and tournament activities will receive an intramural champion t-shirt.

### Employment Opportunities

The Intramural Department offers employment opportunities to students as sport officials and lifeguards. Positions are paid and hours are flexible.

## 1991 Volleyball

Aug. 31 - Sept 1	Grand Canyon U. Tournament	TBA
Sept. 6 - 7	Red and Gold Classic	TBA
Sept. 13 - 14	Central Missouri State Challenge	TBA
Sept. 20	MIAA Round Robin	TBA
	@ Central Missouri State	TBA
Sept. 27 - 28	Angelo State Invitational	TBA
Oct. 4	Tennessee - Martin Tournament	TBA
Oct. 11 - 12	Wayne State (MI) Tournament	TBA
Oct. 18 - 19	MIAA Round Robin	TBA
	@ Northeast Missouri State	TBA
Nov. 1 - 2	UM - St. Louis Volleyfest	TBA
Nov. 8 - 9	Lewis University Tournament	TBA
Nov. 15 - 16	MIAA Championships	TBA
	@ Missouri Southern	TBA

ALL HOME MATCHES AT THE MARK TWAIN BUILDING

## Fall Sports Schedules

### 1991 Men's Soccer

Sept. 7	Washington University	7:30 p.m.
Sept. 10	Regis	7:30 p.m.
Sept. 14-15	@ Northeast Missouri State Classic	
Sept. 14	St. Joseph's	1:00 p.m.
Sept. 15	C.W. Post	1:00 p.m.
Sept. 20	@ Drake University	4:00 p.m.
Sept. 25	@ Missouri-Rolla	7:30 p.m.
Sept. 28	Levis University	1:00 p.m.
Oct. 2	Missouri Valley	4:30 p.m.
Oct. 5-6	UM-St. Louis Classic	
Oct. 5	Northeast MO vs. Gannon	12:00 p.m.
	UM-St. Louis vs. Tampa	2:00 p.m.
Oct. 6	Northeast MO vs. Tampa	12:00 p.m.
	UM-St. Louis vs. Gannon	2:00 p.m.
Oct. 8	Missouri Southern	7:30 p.m.
Oct. 12-13	@ Central Region Classic	
Oct. 12	Lock Haven	1:00 p.m.
Oct. 13	@ Oakland	3:00 p.m.
Oct. 18	Northeast Missouri State	7:30 p.m.
Oct. 19	Northern Kentucky	7:30 p.m.
Oct. 23	Southern Indiana	7:30 p.m.
Oct. 29	Southwest Missouri State	7:30 p.m.
Nov. 1	@ Rollins College	7:30 p.m.
Nov. 3	@ Central Florida	1:00 p.m.

ALL HOME GAMES AT THE UM-ST. LOUIS SOCCER STADIUM

### 1991 Women's Soccer

Sept. 7	@ Wright State University	3:00 p.m.
Sept. 13	@ Missouri-Rolla	7:00 p.m.
Sept. 14	@ Arkansas	4:00 p.m.
Sept. 15	@ Arkansas-Little Rock	1:00 p.m.
Sept. 21	@ Quincy College	3:00 p.m.
Sept. 22	Northeast Missouri State	12:00 p.m.
Sept. 28	Barry University	4:00 p.m.
Sept. 29	Mercyhurst College	1:00 p.m.
Oct. 3	@ Colorado Christian	4:00 p.m.
Oct. 5	Regis	12:00 p.m.
Oct. 6	@ Northern Colorado	2:00 p.m.
Oct. 12	Wisconsin - Green Bay	2:00 p.m.
Oct. 13	Lewis University	1:00 p.m.
Oct. 16	SIU - Edwardsville	7:00 p.m.
Oct. 19	Gannon University	2:00 p.m.
Oct. 20	Louisville	2:00 p.m.
Oct. 26-27	T.J.'s Pizza Classic	
Oct. 26	SIU - Edwardsville vs. Bellarmine	2:00 p.m.
	UM - St. Louis vs. Butler	4:00 p.m.
Oct. 27	UM - St. Louis vs. Bellarmine	12:00 p.m.
	SIU - Edwardsville vs. Butler	2:00 p.m.
Nov. 9	St. Joseph's	2:00 p.m.

ALL HOME GAMES AT THE UM-ST. LOUIS STADIUM

## AM I PREGNANT?

FIND OUT FOR SURE.



- FREE Pregnancy Testing
- Immediate results
- Completely confidential
- Call or walk in

645-1424	831-6723	227-5111
6744 Clayton Rd. (St. Louis)	3347 N. HWY 67 (Florissant)	510 Baxter Rd. (Ballwin)

### 24- Hour Phone Service



Two Strong Traditions  
in North County

## Attention UMSL Students

Now - more than ever - it  
makes sense to live at

### LUCAS HUNT VILLAGE APTS.

- Just minutes from campus
  - Privacy gate
  - 1 & 2 bedroom apartments
  - SPECIAL UMSL DISCOUNT

381-0550 5303 Lucas & Hunt at I-70  
Open 7 days a week

Bring this/ad in for special gift

## The Wimbledon Blazer by Racquet Club

Don't get  
caught  
pledging  
without one!



### Dillard's

#### T-SHIRT OFFER!

Get a T-shirt when you purchase a Wimbledon Blazer at Dillard's! Please send coupon along with store receipt to:  
Racquet T-shirt Offer, Intercontinental Branded Apparel, 2020 Elmwood Avenue, Buffalo, New York 14207

Name: \_\_\_\_\_ Address: \_\_\_\_\_

City: \_\_\_\_\_ State: \_\_\_\_\_ Zip: \_\_\_\_\_

Offer expires 11/15/91.



# We Won't Be Undersold On Anything. Especially College Supplies!

This semester, get smart quick. You can save 40-60% on your back to school supplies at BizMart. Sure, you can shop at the bookstore and "conveniently" spend your first semester's savings on things you really don't want or need. Or, you can come to BizMart where you'll find everything

from typewriters and diskettes to notebooks and answering machines with BizMart's pricing guarantee that "We Won't Be Undersold!" So this year, teach the bookstore a lesson in supplies and demand. Think smart, shop smart, BizMart!

# BIZMART®

**Computers • Software • Office Products**

**If You Need It for Back to School...BIZMART Has It!**

 <p><b>200 SHEETS!</b></p> <p><b>SPIRAL NOTEBOOKS</b> Filled with white coil-bound, 3-hole punched paper. 10 1/2 x 8", 200 Count, 5 Subject. #1004554. List \$2.55.</p> <p><b>EVERYDAY \$1.89</b></p> <p>9 1/2 x 6", 150 Count, 3 Subject. #1004555. List \$1.75.</p> <p><b>EVERYDAY \$1.39</b></p>	 <p><b>STUDIO RTA</b></p> <p><b>DRAFTING TABLE</b> Student style drafting tables with white, adjustable-angle top. Four adjustable levelers. High quality laminate top. Black base. 30 x 42" Top. #2001589. List \$119.99.</p> <p><b>EVERYDAY \$59.95</b></p> <p>31 x 42" Top. #2001590. List \$179.99.</p> <p><b>EVERYDAY \$79.95</b></p>	 <p><b>ECONOMY BINDERS</b> 1" capacity. Suedene vinyl is very durable. Heavy duty nickel plated ring mechanism with twin boosters. Black, Red or Blue. #1006884. List \$3.99.</p> <p><b>EVERYDAY 99¢</b></p>	 <p><b>6 DOZEN PER PACK!</b></p> <p><b>ORIOLE #2 LEAD PENCILS</b> Break-resistant commercial B-grade lead and quality pink eraser. Six dozen. #1009343. List \$12.96.</p> <p><b>EVERYDAY \$2.89</b></p>	 <p><b>Canon ES 3 PORTABLE DAISYWHEEL TYPEWRITER</b> Features full-line correction, interchangeable wheel and 12" platen for oversized documents. Lightweight (only 9.9 lbs). Automatic paper feed. Complete with correctable ribbon cassette, daisy wheel and correction tape. #3002247. List \$159.95.</p> <p><b>EVERYDAY \$99.99</b></p>	 <p><b>MONITOR AND MOUSE INCLUDED!</b></p> <p><b>EVERYDAY \$999.00</b></p> <p><b>286SVGA COMPUTER SYSTEM</b> PCAT-compatible 80286 12MHz, 0 wait state. 1MB standard RAM, upgradeable to 4MB. 40MB hard drive. 3 1/2" 1.44MB and 5 1/4" 1.2MB disk drives. Built-in IDE hard-drive and floppy drive controllers. Four expansion slots, three 16-bit slots available. Includes mouse, instructional videocassette, MS-DOS and GeoWorks software. One-year on-site manufacturer's warranty. #4001960. List \$1,699.95.</p>
 <p><b>Webster's New World Dictionary</b> A MUST FOR COLLEGE STUDENTS! Third College Edition</p> <p><b>NEW WORLD DICTIONARY</b> This third edition features more than 170,000 entries and over 11,000 American words and phrases. #1007074. List \$18.95.</p> <p><b>EVERYDAY \$15.49</b></p>	 <p><b>200 SHEETS!</b></p> <p><b>MEAD FILLER PAPER</b> Quality 16 lb. white paper. Wide margin, ruled. 200 sheets. #1007655. List \$2.00.</p> <p><b>EVERYDAY 50¢</b></p>	 <p><b>100 SHEETS!</b></p> <p><b>MEAD 2 SUBJECT NOTEBOOK</b> Spiral theme book with Slick Cover and Pocket Dividers. College ruled. 9-1/2 x 6" 2 Subject-100 Sheets. #1007742. List \$2.35.</p> <p><b>EVERYDAY \$1.69</b></p>	 <p><b>DANA ORGANIZER LAMP</b> Black practical organizer with weighted base and gooseneck desk lamp; saves desktop space. 60 watt rated. #1005443. List \$24.95.</p> <p><b>EVERYDAY \$8.99</b></p>	 <p><b>O'SULLIVAN WORKCENTERS</b> Workcenters include desk, hutch and auxiliary furniture with adjustable shelves. Finished in warm colonial oak laminates. Some assembly required. #2001514. List \$149.95.</p> <p><b>EVERYDAY \$78.99</b></p>	 <p><b>CASIO FX-7000G GRAPHICS CALCULATOR</b> 193 functions. 16 character x 8 line display. 422 steps. 10 programs, 28 memories. Dot-matrix graphic functions include: trace, plot, and much more. Base conversions/ calculations. Logical operations. 120 hour battery life. Workbook included. #3002228. List \$99.95.</p> <p><b>EVERYDAY \$59.99</b></p>



**Our Agents Are Ready To Take Your Order**

**NOW 4 CONVENIENT LOCATIONS**

**MARYLAND HEIGHTS** 11550 Page Service Rd., Maryland Heights, MO... (314)567-3626  
**CRESTWOOD** 9901 Watson Rd., Crestwood, MO... (314)821-8332  
**HAZELWOOD** 21 Village Sq. Shopping Center, Hazelwood, MO... (314)895-4701  
**OLIVETTE** 1010 Collingwood, Olivette, MO... (314)991-2336

TELEPHONE ORDERS AND DELIVERIES:

**1-800-688-MART**

Mon-Fri, 8:00 AM-7:00 PM CST  
**TO FAX: 1-800-777-4FAX**

**7000 PRODUCTS  
7 DAYS A WEEK!**

**STORE HOURS**

Mon-Fri, 8:00 AM-9:00 PM  
 Sat, 9:00 AM-9:00 PM  
 Sun, 12:00 PM-6:00 PM

**APPLY FOR THE BIZCHARGE CARD TODAY!**



BIZMART has made every effort to ensure the prices listed are accurate; however we are not responsible for typographical errors. We reserve the right to limit quantities. BIZMART will meet or beat any currently advertised price on any of the 7000 products that we stock.