

4-13-1992

Current, April 13, 1992

University of Missouri-St. Louis

Follow this and additional works at: <http://irl.umsel.edu/current1990s>

Recommended Citation

University of Missouri-St. Louis, "Current, April 13, 1992" (1992). *Current (1990s)*. 78.
<http://irl.umsel.edu/current1990s/78>

This Newspaper is brought to you for free and open access by the Student Newspapers at IRL @ UMSL. It has been accepted for inclusion in Current (1990s) by an authorized administrator of IRL @ UMSL. For more information, please contact marvinh@umsel.edu.

The CURRENT

Issue 728

UNIVERSITY OF MISSOURI- ST. LOUIS

April 13, 1992

Close Call

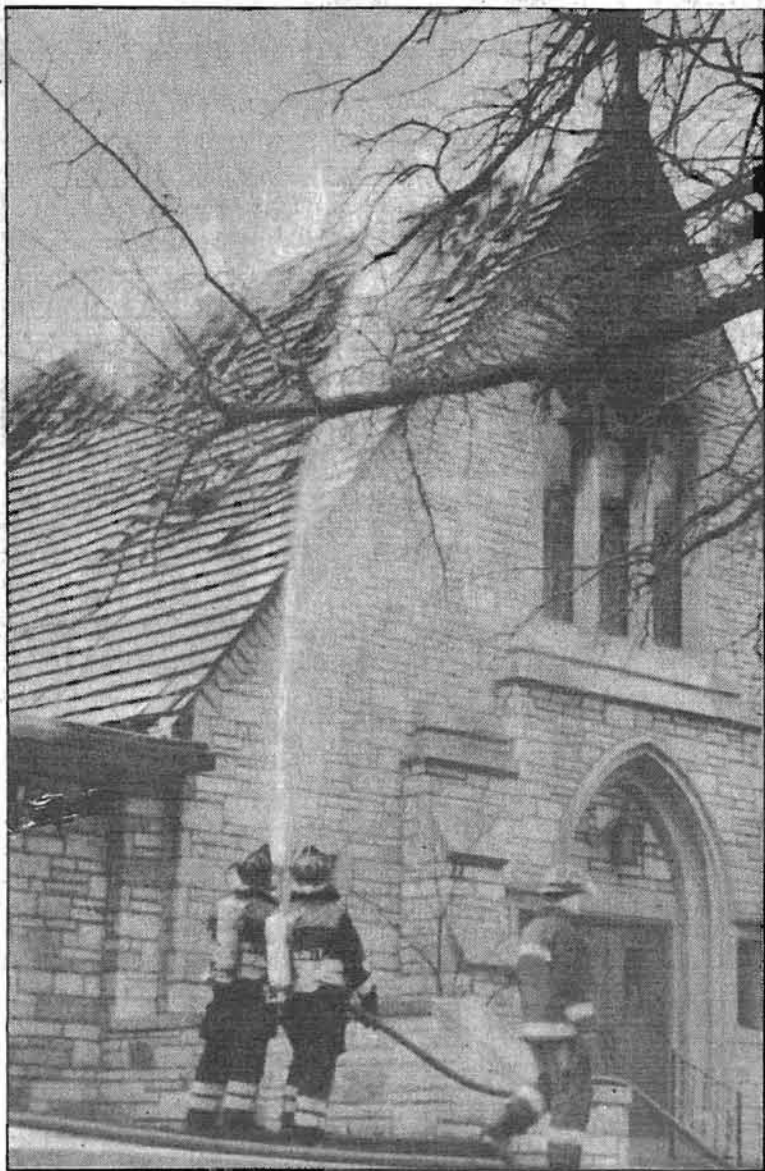


Photo: Max Montgomery

Firefighters from area municipalities and Lambert Airport fought last Monday to save the Trinity Lutheran Church in Bel-Nor. The firefighters managed to save the education building connected to the church.

Proposition O Defeated

by Thomas J. Kovach
editor

The vice chancellor of student affairs said the defeat of Proposition O last Tuesday was "Proposition B deja-vu."

Sandy MacLean said he was "very disappointed" that the proposition was shot down by St. Louis County and City voters. Passage of Proposition O could have meant construction of an Olympic-sized swimming complex on the UM-St. Louis campus.

"We had the opportunity to get a great facility," Athletic Director Chuck Smith said.

Proposition B was a \$385 million education tax package that was soundly defeated by voters last November.

The final vote count for Proposition O was 126,071 against and 78,897 in favor. Supporters of the proposition said it would have generated \$1 billion for St. Louis by imposing 4 cents for each \$100 of assessed value. This translates into nearly \$5 a year for a \$70,000 home, the average value

of property in St. Louis.

MacLean said UM-St. Louis was prepared to deal with the costs.

"We had a budget of \$976,000 for the first year of operation. It would be supported by user fees, rentals and subsidies from the county and the city," he said. "It was feasible."

But Proposition O supporters said the timing was wrong for the public to vote on the issue.

"It's a sign of the times and the nervousness of the economy," Betty VanUum, assistant to the chancellor, said. "People aren't prepared to spend money."

Jack Weinert, vice president of the 1994 Olympic Festival, said that when Minneapolis created similar facilities to those that were proposed in St. Louis, there was "an economic impact of \$28 million" in 1990.

David Clossey, the volunteer coordinator for Proposition O, told *The Current* in March that "what we need is volunteers... and votes."

Proposition O backers said they did not get the 2,000 to 3,000 volunteers to get the word out to the public.

Arts and Sciences Suffers The Worst Budget Cuts

by Bill Farnsworth
Current news reporter

The College of Arts and Sciences is going to lose \$425,000 through cuts to generate funds that must be sent to the University's central administration.

The College will cut \$125,000 from the budget of KWMU, the radio station on campus. The cuts will be over three years; \$50,000 in the first year, \$38,000 in the second and \$37,000 in the third year.

"We will work with the radio station to help improve their fund raising programs," said Martin Sage, associate dean of the College of Arts and Sciences.

The College will cut the budget of the Intersession Program by \$40,000. Staff positions will also be cut by \$64,000 and faculty positions will lose \$196,000. These amounts translate roughly to four secretaries and five full time faculty members.

"Inevitably, the loss of five faculty members will reduce the number of course offerings," Sage said.

Sage also commented on the fact that these cuts will reduce the budgets

of each department by approximately \$11,000.

"I don't know if the other [colleges] have realized their maximum profit margins, but [the College of] Arts and Sciences has not," he said.

The UM-St. Louis Budget and Planning Committee debated cuts in the budgets of university programs in a meeting held last Wednesday to inform the Chancellor of the financial situations of various programs before she made her final decisions concerning which programs will lose money.

Touhill opened the meeting on Wednesday with an explanation of the plan that George Russell, the president of the University of Missouri, has implemented. The plan requires the four UM campuses to return money to the university's central administration.

The St. Louis campus is required to contribute \$1,671,187 to this fund.

The campuses may then apply for the money of this newly created fund. All requests for this money are to be in \$500,000 amounts. Touhill says that she plans to apply for four or more of these \$500,000 amounts, essentially asking for more money than the campus will originally put into the

fund.

Touhill explained that these newer cuts must come in the form of "rate cuts," meaning reductions in funding that has been allocated for five years or more. She said that the cuts that the UM-St. Louis campus has been making recently are "cost cuts", those that are cuts of money that has been saved from past years. Rate cuts are harder to make because the programs are already planning to spend the money that is being cut. Cost cuts involve money that has been saved, or "surplus" money.

"We have been doing [cost cuts] for years," she said. "We made [these] cuts in cost, and George [Russell] mandated that we make them in rate." Touhill said.

Touhill explained how the money will be allocated within the next five years to areas in the University after these cuts. She listed seven areas in the University that she has placed "ceilings" on the increases in funding for these areas. These amounts are in addition to amounts that are currently in these programs' budgets.

Human Assets, essentially the area that involves the employment of faculty and staff, will receive \$598,000

for each year. This translates approximately to a one percent pay raise for the faculty and staff per year, far below the standard pay raises in most university systems.

The institutions that are comparable to UM-St. Louis are giving a four percent increase in salaries and wages for the 1992-1993 school year.

Libraries and Information Technology will receive \$120,000 a year, this amount is a minimum increase that is mandated by the University. This amount will allow for maintenance only, with little or no money for expansion of the libraries.

Student aid will receive an increase of \$250,000 per year. This increase is also mandated by the University. The rise in tuition and fees over the next few years will, most likely, rise by this amount as well.

The funds for the following increases are generated through the most recent tuition and fee raises. The raises in fees and tuition will provide the St. Louis campus with \$1.04 million per year of permanent income. In the first school year, 1992-1993, the budgets

See CUTS, page 4

Disabled Week Raises Awareness



Photo: Alfie M. Ali

Pat Ebers, left, and Dave Swenson, right, participate in the scavenger hunt behind Clark Hall.

by Ray Benthall
Current news reporter

Wheelchair basketball kicked off the twelfth annual Disabled Awareness Week April 6-9. The events was sponsored by the Disabled Students Union to increase awareness about preconceived ideas and everyday challenges students with disabilities face. Other events included a screening of the film *Regarding Henry*, wheelchair races and an awards ceremony.

Students competed against each other and the clock to accomplish a series of tasks such as picking up and newspaper and

entering and exiting buildings.

"The fact that UM-St. Louis was built on a golf course makes accessibility very challenging for students in a wheelchair," said Marilyn Ditto Administrator for Special Student Services. "It really increases student awareness," she said.

Disabled Awareness Week concluded with presenting of 94 Meritorious Awards which recognizes members of the UM-St. Louis community who have been extraordinarily helpful and supportive to disabled students. Any student interested in joining the Disabled Students Union call Dietrich Smith at 553-5048.

UPB Sponsors Lecture

by Anjanette Smith
Current news reporter

The University Program Board sponsored a lecture on subliminal techniques in advertising Thursday April 9.

Wilson Bryan Key, who came to the university three years ago with the same message, arrived to an anxious audience awaiting his analysis. He began by defining the aim of these subliminal methods.

"These are techniques that get inside your head that make you do things, like things, accept things, believe things, consider things which you might normally disregard com-

pletely if the subliminal message wasn't there," he said.

Some of the endorsements analyzed were CAMEL filter cigarettes, Kanon Men's Cologne, Betty Crocker, Benson Hedges 100s, McDonald's, Crown Royal liquor and Wrigley's Gum. Key revealed themes of homosexuality, bestiality, death-wishes, sexual violence and sexual promiscuity.

"Things are never what they appear," reiterated Key as he uncovered the underlying message of each ad.

Founders Day Dance A Success



Photo: Alfie M. Ali

UNFORGETTABLE: Students, faculty and friends danced the night away at the St. Louis Marriott.

by Anjanette Smith
Current news reporter

Dancers twisted to Chubby Checker, vlogged with Madonna, and sweated to commands of C & C Music Factory, at the first annual Founder's Day Dance, hosted by the Pierre Laclade Honors College on April 3. DJ John Ludecke, former UM-St. Louis student, presented a variety of music ranging from the '50s to the '90s. DJ John laid out the tunes and learned the rules of OPP

from Naughty by Nature. Vice President of the Honors College Steve Savis commented on the aim of the event. "I think this is a good opportunity to have a really good time and get people not just from the Honors College involved, but also try and get people to know each other better."

The college plans to host another dance next year. Dr. Fred Fausz, dean of the college, remarked that future plans were inspired by witnessing the crowd's enjoyment of this year's dance.

Jack Buck Scholarship Offered

Radio personality Jack Buck and his wife Carol have established a scholarship fund through the Department of Communication at UM-St. Louis. Buck has been the play-by-play announcer for the St. Louis Cardinals on KMOX radio for 38 years. The Alumni Association is sponsoring a UM-St. Louis night at the ballpark on May 22, and pro-

ceeds from those sales will go toward the scholarship. The winner of the first scholarship will be presented by Buck during pre-game ceremony. A full-time student with a grade point average of at least 2.5 will be selected by the Communications Department. For more information on the scholarship or the baseball game, call 553-5747.

School Of Education Appoints New Dean

by Matt Forsythe
Current news reporter

Donald Robinson, who is resigning his post as dean of the School of Education this semester, takes with him more than two decades of experience in the education field. Prior to serving at UM-St. Louis, Robinson was dean of Oklahoma State University for 16 years.

Chancellor Blanche Touhill praised the dean's role in helping the School of Education move into the '90s. Specifically, she noted the computerizing of the School of Education and also keeping up with massive enrollment that has taken place at the school during the past few years.

"I was really sorry to hear of Dean Robinson's retirement," Touhill said.

The School of Education has grown considerably in the past 20 years, and Robinson has been an important part of a team that has helped the school go through these changes. Robinson was proud of the leaps for-

ward that the school has made in development of educational plans for the region and heightening awareness of the resources that reside in the school for improving education. He also spearheaded the school's moves to improve teacher education by professional development of school relationships.

Robinson said, "We establish the same relationship between the school,

university and participating school districts as you would see between a medical school and a teaching hospital, the same kind of close relationship."

He also saw the school maintain and improve on the Project Compete programs, which include Access to Success, the Bridge Program, and the Engelmann Institute, "helping to create the reality that this is a closely

integrated network of programs that interface between the university, the private corporate sector and schools both for the improvement of education and the improvement of teacher education," he said.

Interim Vice Chancellor Donald H. Driemeier is presently in the process of conferring with appropriate faculty in order to appoint an acting dean of the School of Education.

Music Professor Retires After 27 Years

by Shunda L. Lee
Current news reporter

At the end of this semester, Dr. Kenneth Miller, a vocal music professor at UM-St. Louis for 27 years, will retire. Dr. Miller was the first full-time faculty member of the Music Department. During his tenure, he has seen many graduates of the Music Department become

active in state music organizations and go on to receive advanced degrees from Big 10 organizations. He has published four books on vocal music.

Miller has witnessed several relocations of his department until the final one which took place approximately ten years ago, when the Marillac campus retreat center became the permanent residence of the

Music Department. At the time, he said it was the "best available facility."

Miller will teach part-time at UM-St. Louis for three years and complete the manuscript for his fifth book, *Principles of Singing: Song Repertory*, in about a month. Miller, who is a former radio engineer, says he may get a ham radio and will definitely write some more books.

CLASSIFIEDS

HELP WANTED

\$40,000/yr! READ BOOKS and TV Scripts. Fill out simple "like/don't like" form. EASY! Fun, relaxing at home, beach, vacations. Guaranteed paycheck. **FREE** 24 Hour Recording 801-379-2925.
Copyright # M017KEB

Alaska Summer Employment - fisheries. Earn \$5,000+/month. Free transportation! Room & Board! Over 8,000 openings. No experience necessary. Male or Female. Get the early start that is necessary. For employment program call Student Employment Services at 1-206-545-4155 ext. 1632.

FOR SALE

CHEAP! FBI/US. SEIZED
89 Mercedes.....\$200
86 VW.....\$50
87 Mercedes.....\$100
65 Mustang.....\$50
Choose from thousands starting \$25. **FREE** 24 Hour Recording Reveals Details 801-379-2929.
Copyright # M017KJC

Suzuki. Swift 1990, white. 50 mpg, 5-speed, air, Clarion stereo, Cruise Control. \$4500. 741-1022.

Over three hundred albums from over one hundred different artists. All styles of music. I'm hooked on C.D. sound so I'm willing to sell my whole cassette collection. Three dollars buys you any release that I have. Call (314) 567-7693 before 9:00 p.m. for more info. Ask for Morgan, and if I'm not there, leave your name, number and the name of the album that you're looking for.

1967 Volkswagen Bug, Mint condition. New motor, new transmission, new interior. Will sell cheap. Call 522-9358, ask for Shawn.

OPPORTUNITIES

OPPORTUNITY KNOCKS!
Part-time and full-time permanent jobs in pleasant atmosphere. We have a variety of positions which will go temp to perm.
-Customer Service
-Data Entry
-Word processors
-Secretaries
-Machine operators
- Small tool operation
Please call for interview: 863-0721

MANPOWER
231 S. Bemiston
Clayton, MO 63105
Never a fee. EOE

SERVICES

NEED FINANCIAL AID FOR NEXT YEAR? Financial Aid Hunters will match scholarships, grants and loans for the undergrad, graduate student, or athlete. Everyone is eligible. Call toll free 1-800-USA-1221 Ext. #2312.

Need a Cheap & Convenient Copy Shop? Visit Graphix Plus in the University Center Lobby for copies and all your printing and Art needs. Our prices are very competitive and we offer fast, friendly service. For more info. call 553-5555.

PROFESSIONAL HOME TYPING. Students/Businesses. Reasonable Rates. Quick, Quality Service. Hampton/Chippewa area. Donna 832-4925.

MISCELLANEOUS

NEED A LAWYER?-Personal Injury, including car accidents, TRAFFIC representation, DWI, and criminal defense. Steven May-Attorney at Law 291-5433 - conveniently located.

BOOKS BOUGHT. Buying fine quality book collections. 80,000 books. A **COLLECTOR'S BOOKSHOP.** 6275 Delmar. University City, Delmar Loop. 7216127.

RIVER BLOSSOMS- Litmag now available in campus bookstore.

MISCELLANEOUS

It IS possible to turn a person's life around, by listening and caring. COME, invest 60 hours in training, and give yourself the chance to experience what it feels like to hear someone say, "Thanks, you saved my life."
Life Crisis Services, St. Louis' suicide prevention hotline, will be training new volunteers to handle the hotline in May. If you have thought of a career in the helping professions, or just want to "make a difference", call 647-3100 to volunteer.

STEWART A. SCHNEIDER
Attorney at Law
291-5020
Evening and weekend appointments available.

EARN \$\$\$\$ FAST
TYPING, STAPLING, PAPERS, ADDRESSING, WORKING AT HOME. DETAILS, SEND \$1 AND SELF-ADDRESSED ENVELOPE. KELLY'S BOX 234 • MT. MORRIS, MI 48458

FOR RENT

Normandy East and West 1-2 bedroom apartments. Beautiful park like setting. Central Airs (c/a), Carport/Garage, Mini Blinds, Storage \$100 Security Deposit. Kohner Properties.
\$325 - \$365 call 381-1719

Apartment: \$285

Heat Included
1 Bedroom, 2 Room Efficiency, new appliances, new carpet, some furnished. 6 month or 1 year lease. \$285-\$295. -OR- a 2 Bedroom, 1 Bath apartment: \$315-\$350.
3 Minutes From Campus
381-8797

Bermuda Heights
7738 Springdale
Normandy

Come and write **sports, news** or **features** for *The Current*.
Call Max or Tom at 553-5174.

Remember, It \$Pays

Dierbergs
FAMILY MARKET

EMPLOYMENT INFORMATION

532-8755

MON.-WED.-FRI. 8:00 AM - 4:00 PM

Summer Storage Special

Airport Mini Storage
4653 World Parkway Circle
423-9444
just off Natural Bridge at I-70 & I-170

25% SPECIAL SUMMER DISCOUNT
WITH A COPY OF THIS ADVERTISEMENT
DISCOUNT APPLIES FROM MAY - AUGUST 1992

TRAFFIC TICKETS • DWI
YOU NEED T.L.C.!

TRAFFIC LAW CENTER
OF SULLIVAN & ASSOCIATES

POINTS PROBLEMS?
•SPEEDING •DWI
•HARDSHIP
•SUSPENSION
•NO APPOINTMENT
NECESSARY
•EVENING & WEEK-
END HOURS

**MENTION
THIS AD FOR
A STUDENT
DISCOUNT!**

WEST
984-0700
13350 MANCHESTER RD
1 MILE WEST OF I-270

NORTH
839-8111
8213 N. LINDBERGH
1 MILE NORTH OF I-270

CITY
752-7800
3835 S. KINGSHIGHWAY
CORNER OF CHIPPEWA & KINGSHIGHWAY

I'm Here
When You Need Me

The Automatic Teller

Normandy Bank Customers, get your application at the facility in University Center or call us at 383-5555. If you have your account at another bank, your ATM card can be used at the machine in University Center if it has a BankMate or Cirrus symbol on it.

Normandy Bank

7151 NATURAL BRIDGE
ST. LOUIS, MO 63121

383-5555 **Member FDIC**

"A MASTERPIECE AND A TRIUMPH!
THE BEST PICTURE OF THE YEAR.
Patrick Swayze is brilliant, as are Om Puri and Pauline Collins. The brilliant direction of Roland Joffé reminds one of David Lean at his finest."
-Jim Whaley, CINEMA SHOWCASE

"THE FIRST MUST SEE FILM OF 1992!
A soaring tribute to the human spirit."
-Jim Sjveda, KNX RADIO

"PATRICK SWAYZE RISES TO NEW HEIGHTS
in this touching story of the healing power of friendship."
-David Sheehan, KNBC-TV

"A SWEEPING ACHIEVEMENT!
Touching, moving and real. 'City Of Joy' is a stirring motion picture that will stay with you long after you've left the theater. Swayze is superb."
-Neil Rosen, WGN RADIO

CITY OF JOY
A ROLAND JOFFÉ FILM

TriStar Pictures Presents A LIGHTMOTIVE PRODUCTION A ROLAND JOFFÉ FILM PATRICK SWAYZE "CITY OF JOY" PAULINE COLLINS OM PURI SHABANA AZMI ART MALIK MUSIC COMPOSED AND CONDUCTED BY ENNIO MORRICONE FILM GERRY HAMBLING A.C.C. PRODUCED BY ROY WALKER DIRECTED BY PETER BIZIOU, B.S.C. BASED ON THE BOOK BY DOMINIQUE LAPIERRE SCREENPLAY BY MARK MEDOFF PRODUCED BY JAKE EBERTS AND ROLAND JOFFÉ DIRECTED BY ROLAND JOFFÉ

STARTS FRIDAY APRIL 17 AT A THEATRE NEAR YOU

Prop O: No Chance

The defeat of Proposition O shouldn't come as a surprise to anyone. From planning to the actual vote, the proposition never had a chance.

The primary reason for its defeat was lack of voter confidence. This has to be the worst time to put a proposition before the public, despite what it could have done for UM-St. Louis.

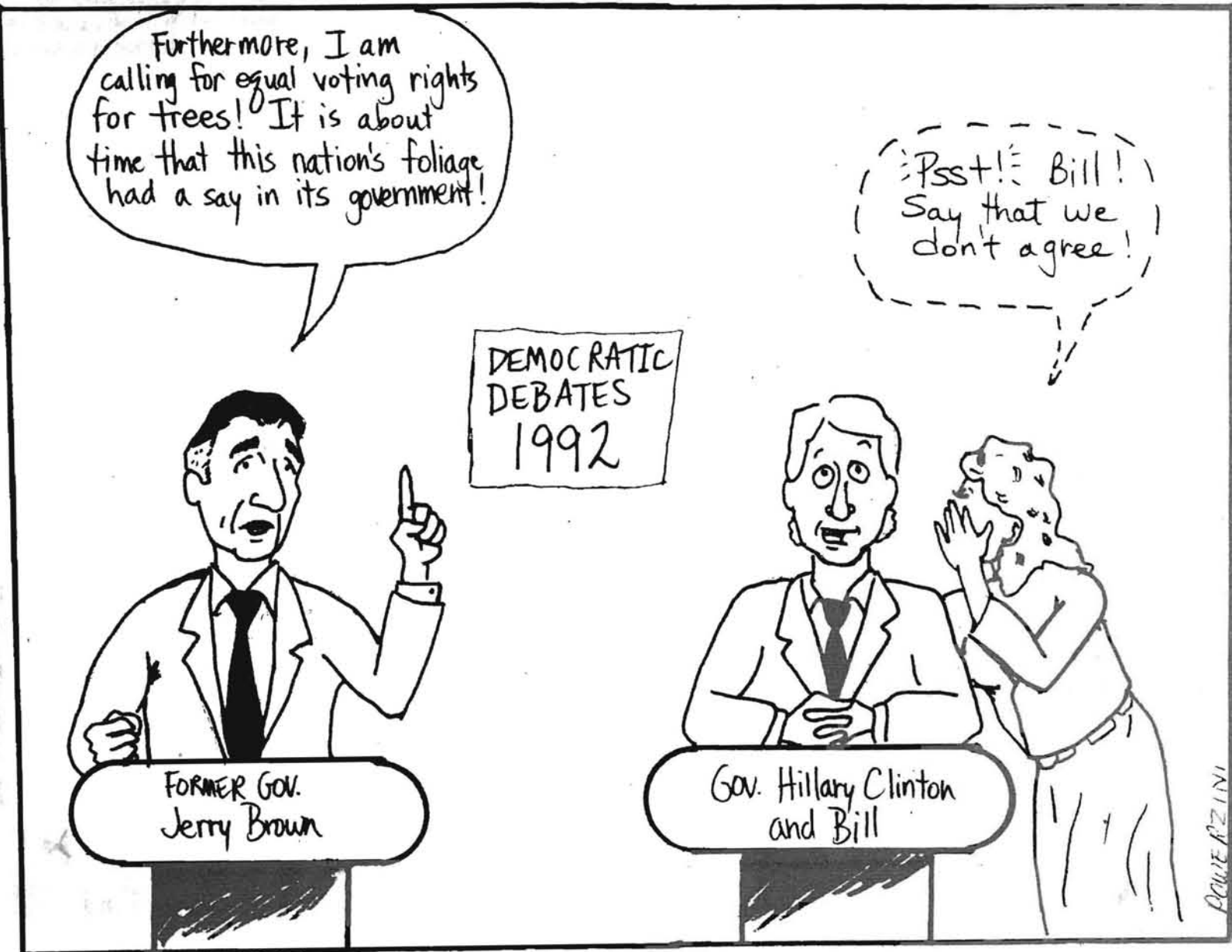
Passage of Proposition O would have generated \$1 billion for St. Louis by imposing 4 cents for each \$100 of assessed value of property. Did the creators of Proposition O, particularly Civic Progress and others, believe it would pass during these difficult economic times?

Several UM-St. Louis administrators admitted the real problem with the proposition was Civic Progress and other city officials. "The whole process is backwards," said one administrator.

Civic Progress, as well as other sports community leaders, led the charge to get Proposition O passed. For UM-St. Louis the benefit was a new swimming complex at a cost of \$16 million. UM-St. Louis administrators had already done their homework as to how much the complex would cost to operate. They visited various pools in St. Louis and came up with a first-year budget of \$976,000. If Proposition O would have passed, the swimming complex would have been supported by user fees, rentals and subsidies from the county and city.

The creators of Proposition O should coordinate their efforts with more citizens. The image Civic Progress and others put out to the public is one of "St. Louis will get jobs and money, but only if you are willing to pay for it." That statement can't happen because there are those without money because they don't have jobs.

This was a bad time to put a proposition before the voters.



Ashe: Innocent Victim DA Made Right Decision In Savitz Case

Arthur Ashe's revelation that he has AIDS (acquired immune deficiency syndrome) is probably more shocking than Magic Johnson's announcement.

Why? He was an innocent victim of a medical community that was not yet aware of the danger. Ashe, a tennis legend, contracted the disease from a blood transfusion during routine heart bypass surgery in 1983.

We were, of course, devastated that one of America's role models had contracted the deadly disease last November. Soon after Johnson told America what happened, AIDS awareness increased. A few months later that awareness was still present but no longer the topic of everyday discussion.

Last week's disclosure by Ashe shows that this deadly disease can strike anybody. While the AIDS syndrome was once believed to be an exclusively homosexual disease, it is now clear that this disease doesn't discriminate.

It is a tragedy that the cure for Ashe's heart condition caused a larger problem. The only justice will be if medical researchers find a cure for the disease.



by Michelle McMurray news editor

"HIV is not a crime!" yelled the AIDS activists in front of the Philadelphia court house. The protesters allege that an accused sex offender got unfair and different treatment from the criminal justice system.

The defendant is Edward Savitz, a 50-year-old businessman accused of paying hundreds of boys and young men for sexual favors such as oral and anal sex, and even buying their underwear, socks, and feces. Several thousand pictures of naked boys were found in his apartment. Savitz has only been charged with sex crimes involving

four boys. One of the complainants claims to have had sex with him at least 70 or 80 times.

When Savitz was first arrested his bond was originally \$3 million. The controversy began when Savitz was re-arrested on seven new charges and his bond was raised to \$20 million. Lynne Abraham, the district attorney sought to have his bail set at \$35 million to make sure he was off the street and would be no harm to himself or anyone else, her spokesman claims. Savitz's attorney, Barnaby Wittels, said the ruling was AIDS phobia and homophobia. He said the high bail was to appease the public and was a violation of the Eighth Amendment guarantee against excessive bail. Wittels also maintains Savitz was devastated by the public disclosure that he had AIDS and was beaten and taunted by other inmates.

Abraham held a press conference to reach anyone who might have had contact with Savitz and been exposed to the AIDS virus. She claims that Savitz gave her permission to tell, and that her purpose was to inform the

public so they might take care of the situation.

So blame it on the media as always. The AIDS activists say the press conference increased hysteria and over reaction from the public. They threw condoms at Abraham and accused her of a set up by the district attorneys office and the police.

Hogwash.

There is a dispute about whether he practiced safe sex. Savitz claims he practiced safe sex, but Abraham says she received more than 200 phone calls from people who said he never used a condom. God only know how many people he infected and how many people they infected. It's a vicious circle. As of March, 1992, there have been 135,434 deaths nationally from AIDS, and approximately five million people are infected with the AIDS virus, including those who are not aware they carry the virus.

Abraham should fess up to the real reason for the high bail instead of passing the buck to the bail commissioner. Savitz's bail was higher than mass murderer Jeffery Dahmer's. I think the real reason was so he would be detained from putting anyone else at risk to get AIDS. There are 8 states that have laws pending about knowingly transmitting AIDS, and 12 states that actually have laws on the books.

I agree, having HIV is not a crime, but failing to inform sex partners about the virus and possibly putting them at risk to contract a deadly disease is.

Commentary

It was suggested that the authorities should have tried to contact Savitz's former partners privately. That would literally be impossible considering the volume of people involved. I don't think she did anything wrong given this unique situation. Those men and boys needed to know as soon as possible given the fact that Savitz did not inform his sex partners of his HIV status. I am all for everyone's right to privacy, but Savitz had no intentions of slowing down his behavior until he got caught and was forced to.

LETTERS FROM THE PEOPLE

NARAL Working To Increase Political Voice

Dear Editor:

If we close our eyes and imagine the world our mothers lived in before Roe v. Wade, the 1973 Supreme Court decision which recognized the right to choose abortion in this country, life was filled with many dangerous uncertainties for women facing crisis pregnancies. In this world, women by the thousands were injured and died as a result of illegal, unsafe, back alley abortions.

Unfortunately, this horrible past could be our future.

Today, more than ever, pro-choice students must be everything but apolitical (Yes, this is the correct spelling). With all the looming threats to the right to choose safe, legal abortion—the Supreme Court's announcement that it will hear a case from Pennsylvania that could take away the right to choose whether or not to have an abortion, Louisiana's abortion ban moving through the judicial pipeline, and the passage of an "intimidation" law in Ohio—we must be registered, registering, mobilizing and voting. We

must vote pro-choice.

The Campus Organizing Project of the National Abortion Rights Action League (NARAL), in coalition with the United States Student Association, is actively working to increase student and youth political participation.

Our goals are clear. We will elect a pro-choice president, make a significant change toward a veto-proof Congress, elect pro-choice officials at every level of government and enact the Freedom of Choice Act (FOCA)—a federal legislation which sets a national standard of protection by codifying the principles established in Roe v. Wade and secured the right to choose. The role student will play in this election year is pivotal.

As young men and women who have been secured in our fundamental right to choose, enactment of FOCA is even more important because it secures our right and places it beyond the reach of state legislators like Louisiana's David Duke. We cannot have this right legislated state by state

like speed laws (in some states the maximum is 55 while in others its 65), or where in American women in Pennsylvania have fewer fights than women in California. Only through the pro-choice participation will we deliver pro-choice victories and secure our rights nationwide.

The March in Washington on April 5 was the start of a process of educating and registering pro-choice students around the country to vote on Nov. 3 for pro-choice candidates.

In 1992, we will take pro-active steps to secure our right because restrictions such as those in the Pennsylvania case (Planned Parenthood of Southeastern Pennsylvania v. Casey) are no more than "Jim Crow" abortion laws designed to create obstacle after obstacle to prevent women from

exercising the right to choose.

Pro-choice students around the country realize that Congress has the authority, obligation and responsibility to pass FOCA. From California to Maine, Louisiana to Wisconsin, Virginia to New Mexico students are calling, faxing, writing and visiting their representatives to say that if she or he is not a co-sponsor of FOCA, it is time to sign on or move on. FOCA is a voting issue and students vote.

From the march on April 5 to election day on Nov. 3, pro-choice students will be visible, vocal and voting. For some of you, this will be your vote case in a presidential election, make that vote count.

Leslie-Watson Davis

Write a Letter To The Editor
You Will Feel Soooo Much Better!

LETTERS POLICY

The Current welcomes letters to the editor on subjects of interest to its readers. Short letters are most likely to be chosen for publication, but the use of any material is at the discretion of the editor.

Editing may be necessary for space and clarity to avoid obscenity, libel or invasion of privacy, but ideas will not be altered.

Upon request, editors will use initials only, but only rarely and for compelling reasons. A signed letter carries more weight with readers. Letters do not necessarily reflect the opinions of this newspaper.

All letters must bear the handwritten signature of the writer and include address, student identification number and phone number for verification purposes (address, student identification number and phone number will not be printed).

The Current is published weekly on Mondays. Advertising rates are available upon request by contacting The Current business office at (314) 553-5175. Space reservations for advertisements must be received by 5 p.m. the Wednesday prior to publication.

The Current, financed in part by student activity fees, is not an official publication of the University of Missouri. The University is not responsible for The Current's contents and policies.

Editorials expressed in the paper reflect the opinion of the editorial staff. Articles labeled "commentary" or "column" are the opinion of the individual writer.

All material contained in this issue is the property of The Current and cannot be reproduced or reprinted without the express written consent of The Current and its staff.

Thomas J. Kovach
Editor

Max Montgomery
Managing Editor

Michelle McMurray news editor	Marcus J. Buggs business director
Russell Korando sports editor	Jason Buchholt associate business director
Robln Mayo features editor	Christine McGraw advertising director
Alfie M. Ali Bhavana Hingorani Mimi Buckner Diana Davis Bill Farnsworth Matt Forsythe Nancy Lewis Shunda Lee Gerry Malone Anjanette Smith Lauren Tsugita Brad Touchette reporters	Traef Furlow associate advertising director
Peggy Krewson David Workman copy editors	Cindy Hale advertising sales representative
	Dirk Fletcher director of photography
	Michele Lawson Tina Leu photographers
	Rich Hubner circulation director

Cuts from page 1

of programs will be increased by \$813,000. The remaining \$223,000 will be awarded as lump sums above the regular operating budgets of programs in the 1992-1993 year only and will be allocated as permanent income in the 1993-1994 school year.

Research and Graduate Education will receive an increase of \$196,000 in the 1992-1993 school year and will receive another increase of \$26,000 per year beginning in the 1993-1994 school year. Scholarships and Fellowships will receive \$32,000 in the 92-93 year above the regular budget, the Tropical Ecology program will receive \$35,000.

Professional Education, which includes the optometry program on South Campus, will receive increases of \$168,000 and \$218,000 per year in the 92-93 and 93-94 school years, respectively. The school of Business will receive a lump sum amount of \$72,000 for the 92-93 school year in addition to its regular budget.

General Education, which en-

compasses the majority of the students attending UM-St. Louis, will receive a \$122,000 increase per year after the 93-94 school year. The Honors College will receive an increase of \$87,000 in 93-94, and the Cultural Diversity Program will receive an increase of \$35,000 next year. The Writing Program will also receive a lump sum of \$84,000 in the 92-93 year above the budgetary increases.

Teacher Education's budget will be increased by \$104,000 per year, \$44,000 in 92-93 for Internationalization and Cultural Diversity and \$60,000 in 93-94 for Graduate and Undergraduate Education.

The \$500,000 amounts that can be secured from the central administration fund can increase these ceilings, but the applications for these \$500,000 sums must describe where the money will be allocated.

Russell has outlined the areas that will receive priority in the awarding

of these sums: Physical Assets, buildings, parking lots, roads etc.; Human Assets, faculty and staff; Libraries; and Scholarships and Fellowships.

"There are [programs] that will get money, but there are [programs] that will *not* get money," said Touhill, "We are going to have another series of layoffs...we are there."

Nominations for Awards For Excellence Due In

Nominations are being accepted for the Academic Non-Regular Award for Excellence. This annual award recognizes outstanding achievement in teaching, research, service or other contributions to undergraduate and/or graduate education by individuals who hold full-time academic non-

regular appointments. The award and a stipend will be presented in late spring 1992. Any UM-St. Louis faculty member, staff member or student may submit nominations. Nominations are due in the office of Ruth Person, associate vice chancellor for academic affairs, by-Apr. 15.

AM I PREGNANT? FIND OUT FOR SURE.



- FREE Pregnancy Testing
- Immediate results
- Completely confidential
- Call or walk in

725-3150
950 Francis Pl.
(St. Louis)

831-6723
3347 N. HWY 67
(Florissant)

227-5111
510 Baxter Rd.
(Ballwin)

24- Hour Phone Service



FRANK
WESTLAKE
PHARMACY, INC.

Have your prescription filled
during class.

Plus . .

**Just Seconds
From Campus ! !**

- Free Delivery
- Computerized Prescription Drug Interaction
- Patient Consulting on the Correct Use of Prescription Drugs

385-5400

7605 Natural Bridge Rd



**THE BOATMEN'S
NATIONAL BANK
OF ST. LOUIS**

PART-TIME INPUT PROCESSORS

Attention College Students! The Boatmen's National Bank of St. Louis is seeking part-time input processors for second and third shifts, good hours for full-time students, at our 8th and Market Street location.

Some of the responsibilities will include opening envelopes, verifying the negotiability of checks, running a 10-key adding machine tape on the checks and batching the work. Paid on-the-job training is provided. Some overtime is required.

Our second shift hours are from 3 p.m. - 11:30 p.m. and our third shift is 10:00 p.m. - 7:30 a.m. (Most schedules include Fridays and Sundays.) We pay \$5.51 per hour, 10% shift differential, plus paid parking.

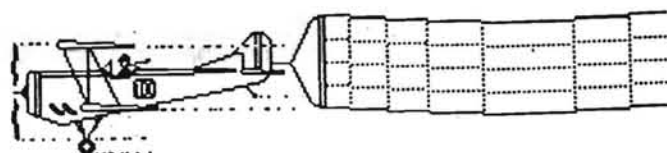
If you are looking for a part-time position with a dependable schedule, fixed hours and great pay, Boatmen's is the place for you.

Send your resume noting this ad or apply in person on Tuesday or Thursday 10 a.m. - 2 p.m. to:

The Boatmen's National Bank of St. Louis
Human Resources Dept.
ATTN: PTIP
1 Boatmen's Plaza
St. Louis, MO 63101

Equal Opportunity Employer

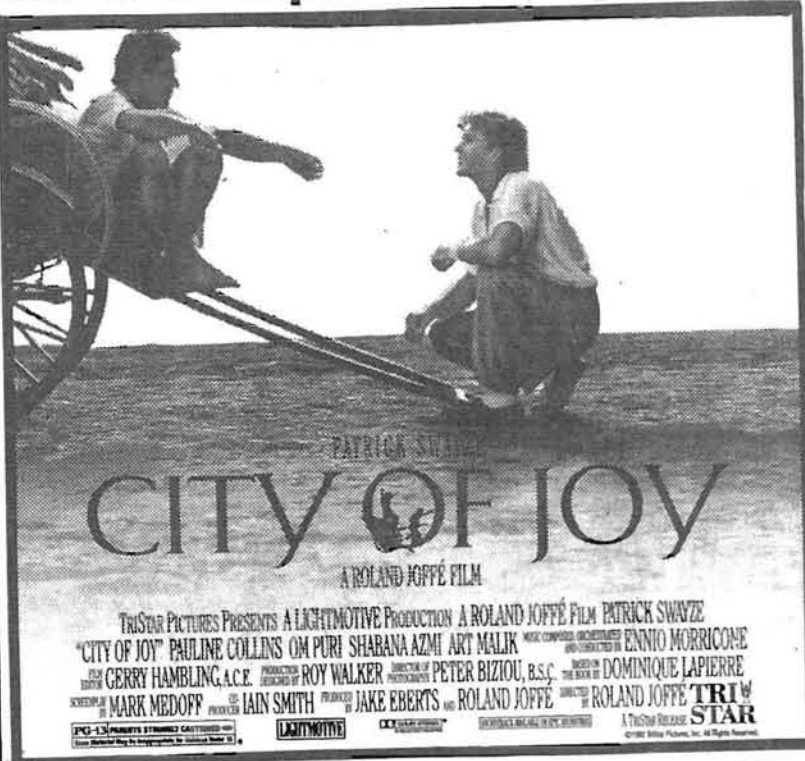
AIR, LAND & SEA EXPRESS



- **SMALL MOVE ONLY**
- **NO MINIMUM CHARGE**
- **PACKED & SHIPPED
WORLD WIDE**

Call **423-0559**

TriStar Pictures, Y98 FM, and The Current present: "City Of Joy"



FREE PASSES

The Current is giving **free copies of the City of Joy Illustrated Film Books** featuring Patrick Swayze, to the first 25 people to come to the Current, #1 BMOB, on Monday, April 13th. The first 10 people to show up on Monday will also receive **two free passes to a special showing of City of Joy**, at Ronnie's 8 on Tuesday, April 14, 1992

GIVE BLOOD EACH SEASON



UM-ST. LOUIS BLOOD DRIVE!

April 13th

9 a.m. to 7 p.m.

and April 14th,

9 a.m. to 2 p.m.

126 J.C. Penney Building

SPONSORED BY BETA ALPHA PSI

ALL DONORS ELIGIBLE FOR RAFFLE WITH PRIZES FROM:

CARDINAL BASEBALL, DOMINO'S PIZZA, K-SHE, PASTA HOUSE,
STREETSIDE RECORDS, AMC MOVIE THEATRE, TURNER'S FROZEN CUS-
TARD, FANTASTIC SAM'S, FUNNY BONE COMEDY CLUB, ST. LOUIS BLUES
HOCKEY, MC DONALD'S, THE MUNY, AND MORE!!!

SEVENTH ANNUAL MIRTHDAY CELEBRATION

Wednesday, April 22, 1992

10 a.m. to 6 p.m.

UM-St. Louis North Campus
(by parking garages C and D)

*There's something for every
one and it's free!*

Rondo Blues Deluxe

**St. Louis Browns
Rollerblades**

*Come fly on the Rock-O-Plane
and fry on the Sizzler!!*

**Ralph Butler
Band**

Sand Volleyball

Music Video Booths

Caricature artists

Sponsored by University Program Board

Mirthday: April 22

In This Corner



Rivermen Row Is Murder On Foes

by Russell L. Korando
sports editor

Adversity can sometimes crush a team. I don't care at what level the team plays, either. Professional, college and right down to the little league level.

This season, adversity has been no friend to the UM-St. Louis men's baseball team. So far, three players have left the team. On a team where Rivermen skipper Jim Brady said its one flaw was lack of depth.

But wait a minute. The Rivermen are 17-8. Ranked second in the Missouri Intercollegiate Athletic Association.

They have continually come back in the late innings to pull out victories. Against conference foe Southwest Baptist, who was 5-0 coming into the series April 3-4, the Rivermen scored three runs in the bottom of the eighth inning and won 3-2.

Junior southpaw Chuck McNelly was again wondrous as he pitched his fourth complete game, and out-dued a pitcher that Brady said was one of the best in the conference.

A double header followed the next day. It was the ninth game the Rivermen had played in as many days. 'Bulldog' Runzi took the mound. The Rivermen's explosive offense jumped on the Bearcats early, and Runzi coasted to a complete game 7-0 win.

Robby Rixford, who was transplanted from pitcher to first base, somehow made a grab on a throw to first while laying on his back. Rixford's natural athleticism made the move, in a time of need for the team, naturally, and is a prime example of the team's character.

Offense is not a problem with this team. They have twice scored over 20 runs this year, and they seem to score runs in bunches, but push them across when it counts.

I would not want to face any of the Rivermen lineup with the game on the line. I hate to exclude anyone of them, but because of space constraints let's pinpoint who's hot right now.

Brian Rupp: it took him a couple of weeks early on, but lately he has become all his pre-season credentials made him out to be. Rupp is batting .373 and is finding his power stroke. Against Baptist he twice went 4 for 5, and has driven in 17 runs.

Donnie Joliff: cooled off a little in the Baptist series, but overall leads the team in most of the power departments. After hitting exactly zero last year, Joliff has hit five homers. He seems to generate more bat speed than anyone else.

Jeff Eye: hitting .372, while called upon to play in a number of positions and circumstances. Eye became a victim of Rivermen Field when he stepped in a gopher hole or rabbit burrow — you get the picture. Both he and Mike Landwehr, who Brady said was the "unsung hero" of the team, have been hobbled by injuries.

Landwehr's a nice enough guy off the field, but once he gets between the lines, he's all business. He gets spiked after making tough throws. No big deal.

His eighth spot in the order was not indicative of his hitting. I'd compare Landwehr to a landmine. Once a pitcher gets through Rivermen's Row, Landwehr's lying in the weeds. Boom! Base hit, and we're back to the top of the order. Ahh, how I could go on."

Baseball is here at UM-St. Louis maybe until sometime in late May when the College World Series comes to a close. Don't look for any brash predictions in this space, but know this: this team is talented, well-coached, under-funded, under-respected, and well-deserving of whatever good comes their way.

"D.J." Provides Wattage For A High Charged Rivermen Offense

by Greg Albers
Current sports reporter

When Jim Brady recruited Donnie Joliff to play baseball at UM-St. Louis, he thought he was getting a premiere defensive center fielder. What he got was a franchise player.

"I was trying to emphasize last year that he was the best freshman in the conference," Brady said. "There were some guys who didn't believe it. Well, they better believe it, because this guy can play."

After earning second team All-Central honors last year, Joliff began his sophomore season with his first collegiate home run and hasn't stopped since. After 25 games he led the team in batting (.398), home runs (5) and runs batted in (30). Last week, after tying a school record with five hits against Eureka, he was named the MIAA player of the week.

"I'm hitting the ball to all fields," said Joliff. "The quality of pitches I'm swinging at this year is a lot better."

After not hitting any home runs last year, Joliff's power surge came as a surprise to many people, but not Brady. He followed the progress his center fielder made last summer during a Metro Collegiate season in which he batted near .375 and walloped nine home runs.

"Donnie has tremendous bat speed," Brady said. "There are two

Joliff's Numbers

Batting: AVG .398 AB 93 R 26 H 37 RBI 30
2B 6 3B 6 HR 5
Fielding: PO 50 A 0 E 2 FIELDING % .962
TEAM AVERAGES: Batting: .322 Fielding: .935

keys to hitting—balance and bat speed—and he has both of them.

"I think the power numbers have transpired somewhat because of the great summer he had last year. It was a confidence thing. He was a dominant hitter in that league."

Although it has been his offensive production that has gathered so much attention, Joliff believes that hitting is not his greatest strength.

"It's great I can mix in some offense," Joliff said modestly, "but I think defense is what I do best."

His manager would tend to agree. "Defensively in center field, he has no peers," Brady said. "He gets a great jump on the ball. He possesses an outstanding throwing arm and he can go coast to coast. That's what you look for in a center fielder. That's one of the reasons we were turned on to him in high school."

As an all-state pick at Wentzville High School, Joliff turned on a lot of college coaches, but in the end, it was Brady who claimed the prize.

"I had offers from other schools," Joliff said, "but Coach Brady was very open and very honest to me. He came right to me and said, 'You could fit into our program and play here,' and that's what I was looking for. He's a real nice guy. I love playing for him. He knows the game of baseball."

Joliff said what he likes most about being a Riverman is his teammates.

"You have to like the guys you're playing with," he said, "otherwise there's no togetherness."

With Joliff leading the way, the Rivermen have jumped out to a 17-8 record and have won six out of eight conference games. Shortstop Brian Rupp has benefitted from hitting ahead of Joliff in the batting order, as his team-leading 26 runs (tied with Joliff) will attest.

"I know if I get on base," Rupp said, "he's usually going to get a hit, or at least move me into scoring position, so that's going to help the team score a

See JOLIFF, page 6



Photo: Dirk Fletcher

JOLLY JOLIFF: Centerfielder Donnie Joliff leads the Rivermen with five home runs, and is batting an eye-opening .398.

Banged Up Riverwomen Fall 12 Games Under .500

by Pete Dicrispino
Current sports reporter

Last week, after losing a couple of players to injuries and with two tired pitchers, UM-St. Louis Riverwomen Softball Coach Harold Brumbaugh was praying for rain. Well his wish came true, but the rain came about a half hour late from washing out a 5-2 loss to McKendree College.

"The girls keep playing hard, but they are starting to get a little frustrated lately," Brumbaugh said. McKendree jumped out in front in the first with two runs off Riverwomen pitcher Kelly Childs, who had another strong performance on the mound.

The Riverwomen came right back in the bottom of the first. Freshmen Jeri Mass lead off with a walk. She later scored on a hit from junior Jenny Sinclair, who recently returned to the lineup after missing a few games due to dizziness from a foul tip hitting her in the head.

"It means a lot having her back in the lineup. Jenny is a solid hitter and plays for the team, not for herself," Brumbaugh said.

McKendree came back in the second inning with three runs off Childs, and the help of a throwing error by shortstop Jenny Sinclair, which cost the Riverwomen two runs on the play. McKendree finished out the second inning scoring with a sacrifice fly.

The Riverwomen scored a run in the bottom of the third on back to back doubles by third basemen Sharon Payton and by catcher Stephanie Adelman, but would get no closer to winning.

However the team didn't lack effort. Second basemen



Photo: Alfie M. Ali

ON THE GO: Junior Kim Caudle gets around well on the field. She has made only five errors this year.

Walker Wants Rivermen To Maintain Concentration

by Martha Roeder
Current sports reporter

UM-St. Louis' tennis Rivermen and Riverwomen got off to a slow start this year, but broke the ice by defeating the Webster University Gorlocks, their second win. The first game was over Maryville this past weekend.

Nick Tanchuris, Dave O'Gorman, and brothers Brett and John Fredrick led the netters, coached by Carl Walker in his first year at UM-St. Louis. Tanchuris is currently 7-3 overall. On the Volvo scale, with 6 being the highest rating, he is currently 5.5.

Walker said, "The Rivermen can do anything as long as they keep focused

and maintain concentration."

Tanchuris played a hard, long shot game, winning more than one game on service.

Despite losing to Greenville April 4, Brett Frederick beat Matt Keillor 1-6, 6-4, 7-5. In doubles, Tanchuris and Frederick beat Greenville's team of Smith and Mulholland 6-2, 6-2.

Walker is looking what types of players the other schools have that the Rivermen must play. The Rivermen's only Achilles' heel so far has been its doubles matches.

"For each match they lose in the singles category, they must win in doubles, but have not been doing it," Walker said. He hopes the Rivermen

will show improvement in their team skills as the season progresses.

Walker commented, "We have a competitive team. These guys really enjoy playing the game, have fun and are good sports."

The ladies' team, under the direction of coach Pam Steinmetz, continue to play well. With Julie Johnson leading the way, the Riverwomen are slated to play in the UM-St. Louis Triangular this weekend.

Next Week In Sports

Wrap-up of the men's baseball series against Missouri Southern

PREGNANT?

• FREE TEST, with immediate results detects pregnancy 10 days after it begins.

• PROFESSIONAL COUNSELING & ASSISTANCE. All services are free and confidential.

Brentwood 962-5300 St. Charles 724-1200
Ballwin 227-2266 Hampton South 962-3653
Bridgeton 227-8775 Midtown 946-4900



SAVE 50% ON FILM DEVELOPING WHILE YOU SHOP!

One-Hour Service • In The Mall
Each Picture Is The Best It Can Be Or We Reprint It Free...Now!

Offer applies to regular one-hour prices. One roll per coupon. 4x6 color prints (print length varies with film size). Offer applies to first set of prints only. C41 in lab process. Cannot be combined with other film developing offers. Coupon good through June 20, 1992.



CPI photo finish
one hour photo

One-Hour Services:
film developing • enlargements
reprints • double prints
Also Available:
wallet photos • film
instant color passport photos
video transfer • copies from prints
albums, frames and accessories
E-6 slide processing

11125 Manchester Road
(one block east of Geyer
drive-thru service available)
Dierberg's Heritage Place
(next to Dierberg's - south side)
Union Station • Northwest Plaza
St. Louis Centre
West County Center
South County Center
(with portrait studio)
Mid Rivers Mall
Southfield Center
(N.E. corner of Lindbergh
and Baptist Church Road)
Saint Louis Galleria (2 stores)
Crestwood Plaza • Jamestown Mall
Four Seasons Shopping Center
(Olive and Woods Mill Road)
Chesterfield Mall • Alton Square
St. Clair Square
(Fairview Heights, IL)
Stone Crest Mall
(Osage Beach, MO)

<p>REDEEM COUPON</p> <p>FREE 1/4 lb.* Single Hamburger Limit one</p> <p>With 1/4 lb. Single Hamburger purchase.</p> <p>Expires 5/18/92</p>	<p>REDEEM COUPON</p> <p>2 JUNIOR HAMBURGERS</p> <p>JUST 99¢ Limit Six</p> <p>Expires 5/18/92</p>
<p>REDEEM COUPON</p> <p>SALAD BAR All-You-Can-Eat</p> <p>JUST \$1.99 Limit one</p> <p>Expires 5/18/92</p>	<p>REDEEM COUPON</p> <p>Chicken Sandwich & Regular Fries</p> <p>ONLY \$1.99 Limit one</p> <p>Expires 5/18/92</p>

Jolliff from page 5

lot of runs.

"I think he's pretty much been the catalyst this year. He's carried us a lot. He's hitting around .400. I think that speaks for itself."

With all the success he has enjoyed, Jolliff isn't about to let it go to his head.

"He's a real nice down-to-Earth kind of guy," Rupp said.

Jolliff is not about to rest on his accomplishments either.

"There's always room for improvement," Jolliff said. "Some parts of my defense aren't as good as I think they should be."

If Jolliff were to improve his already sharp skills, that would be just fine with his manager.

"I can't put into words what he means to us," Brady said. "He's our catalyst. He's been an intricate part of the team since he got here."

Write News, Features Or Sports
For The Current

Call Tom At 553-5175 or 553-5174, And Get Involved!

Got A News Tip?
Call Michelle Or Tom
At 553-5174



Purchase a roast beef sandwich and an order of french fries and receive a **FREE** regular size soft drink with coupon.

Good at eight area locations including our newest location 5952 Howdershell, just North of I-270 & McDonnell Blvd.

No limit-not valid with any other discount. Expires May 2, 1992.

IF YOU'RE HAVING SEX...

Don't Fool Around. Be Responsible And Safe.

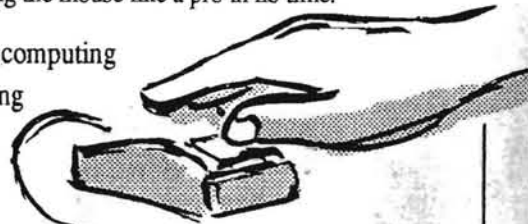
Planned Parenthood
(314) 533-9933



Learn how to tame a mouse

Even the most user-friendly computer is difficult if you don't know how to operate it. At Kinko's, we have classes designed to teach you the ins and outs of Macintosh® computing. With our help, you'll be handling the mouse like a pro in no time.

- Basic Macintosh computing
- Desktop publishing
- Word processing



FREE Macintosh computer training classes

No computer experience necessary. Class size is limited, so please call ahead to reserve a space. Class time: 6 pm on Fridays.

Open 7 days
524-7549

8434 Florissant Rd.
(3 blocks from campus)

kinko's
the copy center

WE HAVE GREAT SUMMER JOBS!!!

Good pay. Great hours.
And when it's time to go back to school -- no problem!

The following jobs are available:

- Data Entry
- Clerical
- Word Processing
- Light Industrial

Call Today 576-5468

Norrell
SERVICES

Birkenstock

Experience comfort in exciting new colors and styles for men and women.



AVAILABLE AT

TROWER'S
"The Foot Comfort Experts."

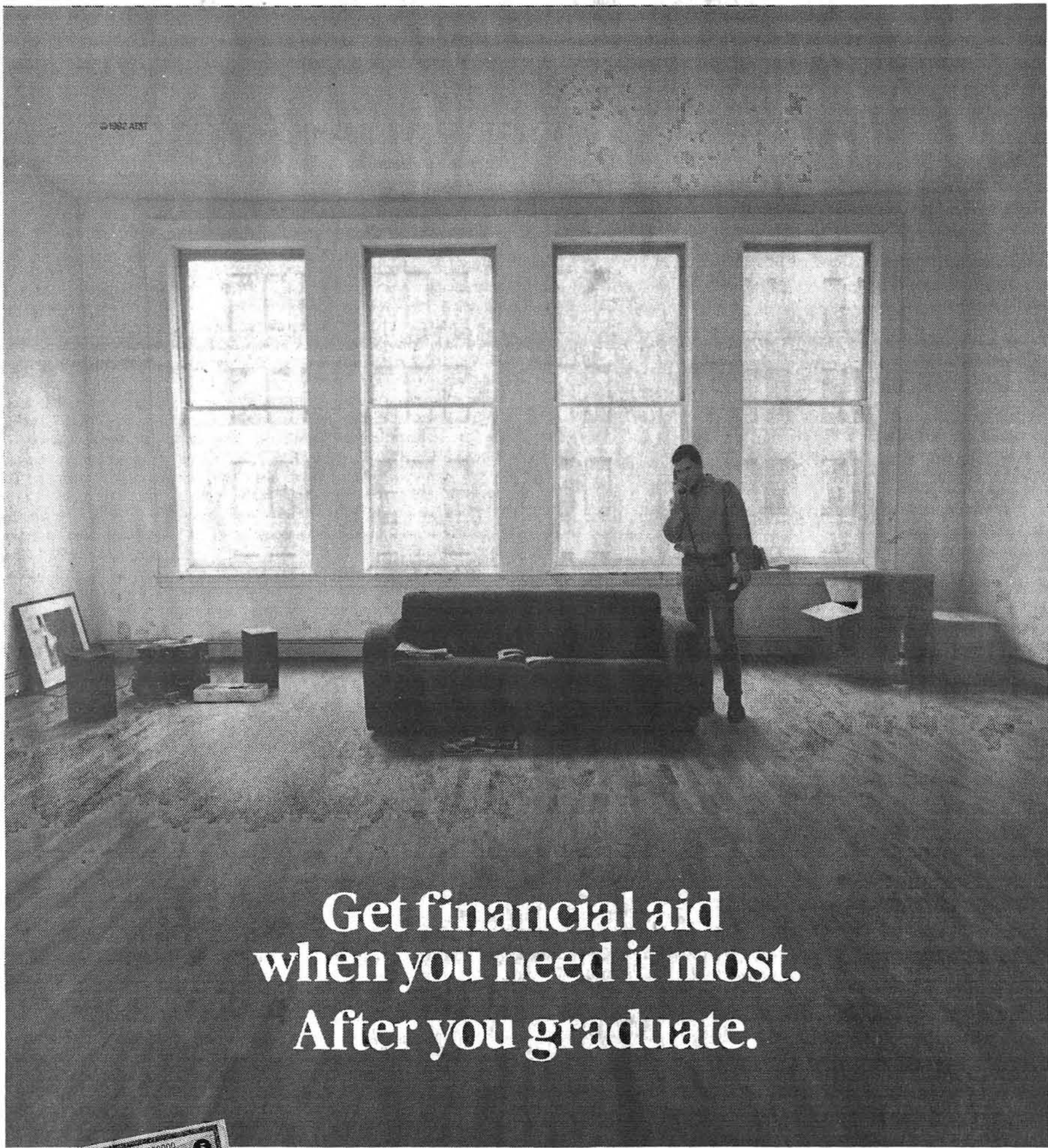
37 VILLAGE SQUARE
I-270 at No. Lindbergh
Hazelwood, MO 63042

731-1530

.....FLASH.....

New colors and styles never before seen in St. Louis are now in!

Don't wait until it's too late!



Get financial aid when you need it most.
After you graduate.



Life doesn't suddenly become easy when you get out of college. There are the challenges of starting a career, getting settled in a new apartment and doing it all within your budget.

So to help you out, we put together the AT&T Moving Ahead Program.

When you sign up*, we'll send you a \$5 AT&T Long Distance Certificate worth 35 minutes of AT&T long distance calling**. And every time you move and choose AT&T or switch from another long distance company, you'll get even more savings benefits.

Since you'll probably be traveling more, you'll also get an AT&T Calling Card sent to you, free. It helps make

calling from payphones easier and you don't have to replace it when you move.

You'll also have the opportunity to save on AT&T long distance calls with the AT&T Reach Out® America Calling Plan.

Even our Moving Ahead newsletter can help. Besides being full of tips on things like managing your money and job hunting, it includes chances to save on the latest clothes, your favorite CDs and more.

Just call 1 800 662-2610,

Ext. 3835 to join the AT&T Moving Ahead Program.

And get a little extra help after school.



Got A News Tip?



-F+M
+L

(Call Michelle
553-5175.)

*There are no enrollment fees. **Based on an AT&T direct-dial, coast-to-coast call made during the night/weekend time period within the continental U.S. You may get more or less for your certificate depending on when and where you call.