

8-29-1983

Current, August 29, 1983

University of Missouri-St. Louis

Follow this and additional works at: <http://irl.umsl.edu/current1980s>

Recommended Citation

University of Missouri-St. Louis, "Current, August 29, 1983" (1983). *Current (1980s)*. 98.
<http://irl.umsl.edu/current1980s/98>

This Newspaper is brought to you for free and open access by the Student Newspapers at IRL @ UMSL. It has been accepted for inclusion in Current (1980s) by an authorized administrator of IRL @ UMSL. For more information, please contact marvinh@umsl.edu.

CURRENT

Aug. 29, 1983

University of Missouri-St. Louis

Issue 455

Offices are there to help students

Well, you decided to continue your education, and you picked UMSL as the place to do it. Maybe you didn't have enough money to study out of state. Maybe you simply wanted to stay in St. Louis. Whatever the reason, the choice has been made. It was a good choice. Now it's time to get on with your education.

If you are unfamiliar with the University of Missouri-St. Louis, and there are a thousand questions floating around in your head, no need to fret. Everyone else feels the same way. The following is a listing of the administrative offices at the university. It may help answer some of your questions. Then again, it may not. If it doesn't, you'll just have to ask somebody. The people who work in these offices are there to help you. Take advantage of their help. It's all yours. Have a good semester, a.d., by the way, welcome to UMSL.

Advising

The academic structure at UMSL is made up of the College of Arts and Sciences, the School of Education, the School of Business Administration, the Evening College, and the School of Nursing. All new day division students are admitted to the College of Arts and Sciences. When students declare their

major, they are assigned an adviser in their area of specialization.

Students who have no assigned adviser because they have not declared a major may take questions and problems to Academic Advising at 303 Lucas Hall. The telephone number is 553-5300.

Office of Admissions

The Office of Admissions continues to serve students after they have been admitted. The office provides UMSL transcripts, current course schedules, student I.D. cards, name and address change forms as well as division change forms. It is important for students to know that no transcripts will be issued until any debts owed to the university are paid in full. The Office of Admissions also provides complete information on advanced placement exams and has numerous catalogs on hand from other United States and international colleges.

The Office of Admissions is located at 101 Woods Hall. The telephone number is 553-5451.

Office of Veterans' Affairs

The Office of Veterans' Affairs is geared toward assisting veterans in applying for educational benefits and maintaining those benefits throughout



welcome freshmen!

their eligibility period. Veterans' Affairs provides these services to UMSL students: certification, confirmation of attendance, tutorial assistance forms, change of address forms, change of program or place of training, dropping or adding courses, declaration of marital status, declaration of dependents and employment referrals. The Office of Veterans' Affairs is located at 346 Woods Hall. Office hours are from 8 a.m. to 5 p.m. on Mondays, Thursdays and Fridays. On Tuesdays and Wednesdays, office hours are from 8 a.m. to 7 p.m. Questions? Call 553-5315 or 553-5316.

Office of Student Activities

The Office of Student Activities provides many services to UMSL students. Interested in

joining one of the student clubs or organizations? Student Activities has information concerning recognized department clubs, fine arts groups, fraternities and sororities, religious organizations and special interest groups.

In addition, the Student Activities office works with the University Program Board and the faculty Concerts and Lectures Committee in planning a variety of concerts, lectures, films and theater programs. Another program sponsored by the Student Activities office is "Wednesday Noon Live." This features local talent from 11 a.m. to 1 p.m. in the University Center.

If you have any questions having to do with transportation or housing, Student Activities is the place to go. The office coor-

dinates a computer match car pool service, a shuttle bus from South St. Louis and south county, and a series of student-operated van pools. They also maintain a list of available apartments, rooms, and flats in the north county area. Lists of persons requesting roommates are also available.

The Office of Student Activities is located in 250 University Center. The phone number is 553-5536.

Office of Student Financial Aid

The Office of Student Financial Aid is located at 209 Woods Hall. Applications for federal financial aid may be obtained in this office. Students who have applied for aid and have questions about the progress of their application should contact this office. In addition to these services, information concerning scholarships is kept in a binder, available for student use. Financial aid advisers are also on hand and are available to talk with students and parents about financial aid. Questions? Call the office at 553-5526.

See "Offices," page 8

UMSL offers a variety of student services

Are you lost in the shuffle? Wondering about this and that? Running hither and thither looking for the library? STOP! Here's all the info you need (or at least a good portion of it). Aren't you just filled with joy?!

Contained within the following paragraphs is information essential to the up-and-coming UMSL student. If you need tutoring or help with your studies, it's here. If you need counseling or career planning assistance, it's here. If all you need to know is where to park, well, it's here too.

So read on and rejoice UMSL student! Your wanderings are over (or at least a good portion of them).

Student Health Center

The Student Health Center offers first aid, general health consultations and referral services. Blood pressure checks and screening for vision and hearing are done routinely. Free pamphlets on various health matters are also available. The center, in conjunction with the UMSL Wellness Project, offers health education and screening programs throughout the year.

In addition to these services, the Health Center also issues handicapped parking permits upon presentation of a medical certificate verifying disability. A regular parking sticker and car license number also are necessary in order to process an application for handicapped parking.

Brochures, applications and claim forms for the Student Accident and Sickness Insurance Plan are available at the center. Claims must be filed directly with the Education Insurance Service.

The Student Health Center is located at 127 Woods Hall and is open from 8 a.m. to 9 p.m. Monday through Thursday, and 8 a.m. to 5 p.m. on Friday. Evening hours are in effect only when evening classes are in session. For more information, call 553-5671. In case of an emergency on campus, dial 5155 on campus phones for assistance from the center or UMSL police.

BOOKS



Counseling/Peer Counseling

The Counseling Service offers free professional assistance to UMSL students, staff, and faculty with personal, social, educational or career concerns. Individual counseling and group counseling are available as well as a wide

range of workshops geared to specific needs. A complete list of workshops for the 1983-84 academic year can be found outside the Counseling Service office (427 SSB) as well as other key locations on campus.

SIGI, a computer-based interactive guidance system for career exploration and decision-making is housed in the Counseling Service. SIGI may be used by appointment without charge by members of the UMSL community. In addition, a Career Library, well stocked with career-related materials and college catalogs, is available for use without appointment.

People who want to see a counselor can do so by making an appointment either in person or by telephoning 553-5711. In an emergency, however, students can be seen almost immediately. The Counseling Service is open from 8 a.m. to 5 p.m. Monday through Friday. For more information, call 553-5711 or visit the office at 427 SSB.

Part of UMSL's Counseling Service is the Peer Counseling Center. This is a traditional student organization staffed by undergraduates who are trained and supervised by, and work in conjunction with, professional counselors and psychologists in the UMSL Counseling Service. However, they are unique in that their activities are geared toward providing special services to their fellow UMSL students.

This semester, Peer Counseling will be providing a variety of free workshops in career exploration, time management, resume writing, interviewing skills, overcoming procrastination, preparing for graduate school, and relaxation. These

workshops are scheduled at specific times throughout the semester. If a student cannot attend at the scheduled time, peer counselors are flexible in that they will arrange another time to meet individually with the student to teach the same skills.

The center also provides personal counseling to students on a walk-in basis. Personal problems that may include family concerns, grades, relationships or any other of the hundreds of problems that plague students in general. This service is on a short-term basis, is confidential, and open to providing referrals when necessary.

In order to provide these services, all peer counselors undergo a pre-training period for one year by taking Psychology 60, "Helping Relationships" and Psychology 61, "Applied Skills," two courses offered at UMSL.

These courses teach effective listening skills and basic counseling techniques. Training, however, does not end here. Once a peer counselor, the training is continuous. Once a week inservices, supervised meetings with the professional staff in the Counseling Service, and practical experience are just a few of the requirements for peer counselors.

Peer counseling is in the Counseling Service, 427 SSB. It is staffed throughout the day from 8 a.m. to 5 p.m. For more information call the Peer Counseling Center, 553-5730.

Women's Center

The UMSL Women's Center offers information and referral service, short-term counseling, advocacy for women students, programs on women's issues and career choices, cultural events and exhibits, a lending library of over 400 volumes of literature by and about women, topical resource files, and 24-hour information on women's activities, events, organizations and services in St. Louis.

Located in 107A Benton Hall, the Women's Center is a good place to get support and assistance in coping with UMSL, help

See "Services," page 2

inside

General information and services found on campus can help any student.

page 2

Brief descriptions and a complete index of student organizations tell you how to get involved.

page 3

Classical music series, cultural events, and a guide to the fall movies offer a rich variety of entertainment at UMSL.

page 4

Pull on your cleats, lace up your sneakers! Varsity sports and intramural events let you build your body as well as your mind.

page 6

information and services

Services

from page 1

in doing research on women, and answers to many questions. The center is also a good place to relax and share ideas with students in a comfortable atmosphere.

There are opportunities for students to get involved in the activities and work of the Women's Center at all levels. The center is open from 8:30 a.m. to 5 p.m., Monday through Friday. The Women's Center is wheelchair-accessible and welcomes the physically challenged. The center has also developed a Student Emergency Contact Form for students who may need to be contacted in emergency situations. This is especially useful to students who are parents. If you have any questions about the Women's Center or would like more information, call 553-5380. This is a 24-hour number.

Center for Academic Development

The Center for Academic Development provides a wide variety of services for students, either free or at a nominal cost. The center's main office is at 507 SSB Tower. The phone number is 553-5194. The following is a list of specific services provided by the C.A.D.

Mathematics Laboratory — 425 SSB, 553-5190 — walk-in lab. Assistance from professional and student tutors in all areas of mathematics. Computer-Assisted-Instruction available. Day and

Evening hours. No charge.

Reading Laboratory — 409A SSB, 553-5410 — walk-in lab. Professional and tutorial assistance in reading and study skills. Day and Evening hours. No charge.

Writing Laboratory — 409B SSB, 553-5950 — walk-in lab. Professional and tutorial assistance in all aspects of writing — term papers, resumes, course assignments. Day and Evening hours. No charge.

Tutorial Laboratory — 304 SSB, 553-5650 — student tutorial assistance in undergraduate and graduate courses. Hours arranged for student and tutor convenience. \$3 per hour charge.

Special Services Advisement — 501 SSB Tower, 553-5197 — academic advising and counseling for disadvantaged students by professional counselors. No charge.

The center also offers instruction in non-degree credit courses in writing (English 09), mathematics (Mathematics 02), and reading/study skills (Elementary Education 082). For more information, contact the CAD.

Career Planning and Placement Office

The Career Planning and Placement Office provides students with career counseling, a career information library, information regarding co-op and internship programs, and information on job opportunities.

Career advisers are available by appointment to assist students on their academic level in the exploration and selection of career goals. Advising is designed to help students grow in awareness and self-understanding of interests, training, and values (lifestyle), and how these relate to a future career.



To aid students in their exploration, the office library offers books, folders, pamphlets and video and audio cassette tapes describing careers through college majors, information on occupations and college work opportunities, career opportunities with various business, industrial, government and non-profit organizations and detailed information on how to apply for jobs. Information about various graduate schools is also available.

In addition to these services, the Career Planning and Placement Office has information concerning co-op and internship programs as well as non-degree job opportunities posted on a bulletin board outside Room 346 Woods Hall.

Parking/Transportation

Students may park only in those lots and areas designated as student parking. Students who have not yet purchased a parking permit must park in the Daily Parking Lot. The charge is 50 cents per day and is payable upon exiting at the coin-operated gate. Students who need to park at the South Campus complex need to obtain a Daily sticker at the Campus Police Office. Temporary parking permits may also be obtained from the UMSL police. This is for students who, for one reason or another, are not driving their registered vehicles.

As far as motorcycles are concerned, special parking areas are set up at the north end of Garage C and on the ground level of all the parking garages under the ramps.

Students must park their vehicles in their appropriate areas whenever the university offices are open, even though classes are not in session. After 5 p.m. on Friday and on weekends or holidays, students may park in the most convenient place, with the exception of handicapped parking areas.

Car trouble? As a service to motorists, the Emergency Services Vehicle operates from 8

a.m. to 10 p.m., Monday through Thursday, and 8 a.m. to 5:30 p.m. on Friday. This service can give assistance in case keys are locked in the car or in case a jump-start is needed. To obtain help, drivers may phone the UMSL police dispatcher by dialing 5155 on campus phones.

If you don't feel like driving to school everyday, it is possible to become part of a carpool. The maximum fee is \$24.50. This covers all the autos involved in

the carpool. Special permits, assigned to carpools with three or more members, allow for parking in a reserved space in Garage C near the University Center.

For more information concerning a computerized listing of students interested in carpooling, contact the Office of Student Activities at 553-5536.

If you don't want to drive to school at all, or there is simply no way for you to drive to UMSL, you

can either purchase weekly Bi-State bus passes at the University Center Information Desk, or

the university also provides two shuttle-bus routes which include the South County shuttle and the

South City shuttle. There are also four 12-passenger vans available for student vanpools. Two van-

pools currently operate from the West County area. Call the Student Activities Office for more information, 553-5536.

Libraries

The Thomas Jefferson Library is located on the North Campus, and the Education and the Health

Sciences libraries are located in the South Campus complex. The Thomas Jefferson Library consists of five levels with entry on

the third level. Facilities on this level include the circulation, reserve, and reference desks; card catalog, indexes, and abstracts; government documents; and the interlibrary loan service. Level

II includes current periodicals and newspapers, the microtext department, the Archives, and the Western Historical Manus-

cript Collection. Levels IV and V house the libraries book collections on open shelves. Study

facilities, lounge areas, and coin-operated copy machines are available on each floor. Students may check out books from the library by presenting a valid UMSL I.D. card.

U. Center serves students

University Center

The dining area, commonly called the Underground, is located on the lower level of the University Center. It is open from 7 a.m. to 7 p.m., Monday through Thursday, and 7 a.m. to 2 p.m. on Friday. The upper level, or the Summit, has pinball machines, video games, vending machines and a lounge area as well as a cable TV room.

Besides the Underground, a cafeteria in the Education Office Building provides snacks and meals for students and staff on the South Campus complex. The hours are from 8 a.m. to 7 p.m. Monday through Thursday, and 8 a.m. to 2 p.m. on Friday. Complete catering services are also available and may be arranged through the campus reservations office in the University Center.

In addition to the food service in the University Center, the student information services are located in the University Center

lobby. Students can purchase tickets for on-campus events and selected off-campus events at the Information Desk. Weekly bus passes and postage stamps are available at the desk. This is also the location of the campus Lost and Found. The desk is staffed by UMSL students. It is open from 8 a.m. to 7 p.m., Monday through Thursday. On Friday, the desk is open from 8 a.m. to 3 p.m. Persons with questions about campus activities should feel free to stop by the desk or call 553-5148.

The University Center also houses the University Bookstore. This, of course, is where textbooks can be bought for courses taught at UMSL. Paperback and hardcover books can also be purchased at the Bookstore as well as a wide selection of UMSL paraphernalia.

A Bookshop has also been established in Room G-13 Education Office Building on the South

Campus complex. The Bookshop specializes in teaching aids and various other educational materials. For more information, call the Bookstore at 553-5763 or the Bookshop at 553-5138.

The Black Culture Room is also a part of the University Center. Located in Room 254, it houses a tutorial service and is equipped with a study area and lounge. The phone number of the Black Culture Room is 553-5959.

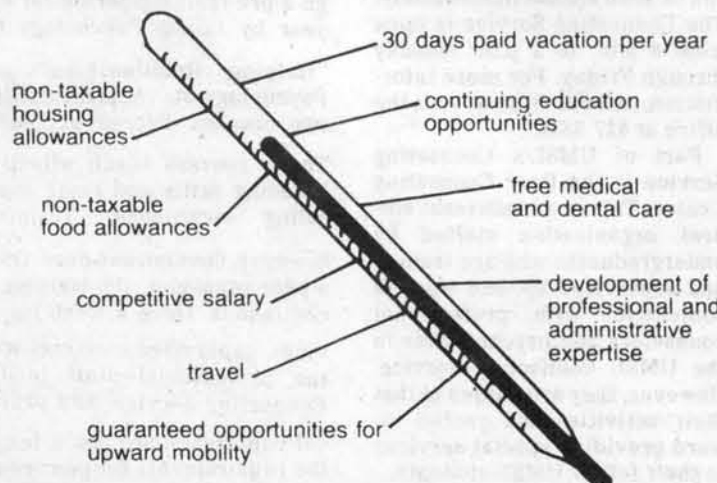
In addition to the services already mentioned, the University Center provides students with darkroom services, audiovisual services, and a typing room. Coin-operated electric typewriters are available for use in 272 University Center. The typing room is open from 7 a.m. to 10 p.m., Monday through Thursday, and 7 a.m. to 5 p.m. on Friday.



Nose for news?

The Current needs reporters and an assistant news editor, which is a paid position. Reporters may receive credit through the speech communication department. Call Erik Schaffer at 553-5174 for details.

NURSES, GET THE FEVER!



Look into the available opportunities afforded you as a Navy Nurse and discover exciting new dimensions in your professional and social life. Get your questions answered today.

Call NAVY 1-800-446-6289

The Original Concrete BLIZZARD

\$1.39
REG. SIZE
LARGE \$1.79

New Exciting Flavors

- Peanut Buster
- Chocolate Chip
- Peanut Butter
- And More

25 Flavors

Eat It With A Spoon

Cool Valley Dairy Queen 1326 S. Florissant Rd.	Dellwood Dairy Queen 1412 Chambers Rd.
Plaza Madrid Dairy Queen 13141 New Halls Ferry Rd.	Village Square Dairy Queen #70 Village Square

student organizations

An introductory note on the various campus groups

UMSL offers a wide selection of student organizations for students of varying interests. This page is intended to give you a general overview of some of these organizations and what they have to offer. The information provided is not all-inclusive, but tries to highlight certain points of each organization. Some organizations are mentioned in other areas of this issue, and therefore are not covered in this section.

The groups are divided into six major categories, as is done by the Office of Student Activities, in order for students to more easily locate organizations for their specific interests. Within these six categories are other general sub-groupings that were used in organizing the material. Where appropriate, groups were arranged alphabetically. Information was compiled, with permission, from the RESOURCE book, a student organiza-

tion directory published by the Office of Student Activities. Students interested in joining a specific type of organization are encouraged to look at all organizations of that type in order to choose the one most appropriate for them.

For further information on individual groups or organizations in general, contact the Office of Student Activities in Room 250 of the University Center, or call 553-5536.

Performing artists lend many talents

These organizations are curriculum-oriented, but in the specific areas of the fine arts. Most accept membership through auditions or applications and may offer academic credit.

Students interested in speech and communication proficiency might be interested in the **UMSL Forensics and Debate Club**. This organization participates in numerous tournaments at major colleges and universities throughout the country.

For music enthusiasts, UMSL offers the **Jazz Ensemble**, **University Symphonic Band**, **Uni-**

versity Singers, and a student chapter of the **Music Educators National Conference**.

The **Jazz Ensemble** offers students an opportunity to perform and learn jazz music. The **Symphonic Band** provides experience in all types of concert music and plays frequent concerts both on and off campus.

The **Music Educators National Conference** is primarily for music majors but is accepting all interested students. The **University Singers** host several social activities and perform frequently on concert tours, including a

performance at the **St. Louis Art Museum Auditorium**.

A newly formed student organization, the **Student Literary Magazine** is open to all students. It plans to publish an edition in the fall and spring featuring student literary and artistic creations.

Practical radio experience is offered at UMSL through the **KWMU Student Staff**. Under an elected student management, it offers on-the-air broadcasting training for students who qualify. The staff airs a variety of programming at 91 on the FM dial.

Curriculum-oriented groups mix courses and careers

UMSL offers a variety of curriculum-oriented groups either directly or indirectly affiliated with an academic department. Such groups cover business, medicine, science, education and other special areas.

Delta Sigma Pi, a coed business fraternity, has participated in social activities with other fraternities, performed community service, and featured speakers from prominent St. Louis corporations. **Pi Sigma Epsilon** is another business fraternity that provides exposure to the business world through marketing, selling and community service projects. It also participates in conventions and parties. The **Marketing Club** is open to all UMSL students and has featured speakers from A.G. Edwards Inc., Anheuser-Busch Cos. Inc. and the Seven-Up Bottling Co. Inc.

The **UMSL Accounting Club** helps students become acquainted with the accounting faculty and environment, as well as other accounting students. It features speakers from major accounting firms and sponsors

an end-of-semester party each term. **Beta Alpha Psi**, an honorary fraternity for national professional accounting, requires members to have a declared major in accounting. It sponsors speakers, holds regular meetings, and conducts seminars with accounting and industry firms.

Trips, seminars and social activities are events sponsored by the **Biology Club**. Its members also assist the biology department with projects.

The **Student Affiliates of the American Chemical Society** is for interested students working toward an undergraduate degree in a chemical science. Its calendar consists of film presentations, speakers and service projects. The **Earth Science Club** holds field trips and speakers for those interested in the field of geoscience.

The **UMSL Psychology Organization** sponsors speakers on subjects pertinent to psychology and related fields. Members also organize field trips and workshops, and they annually present the **Professor's Achievement Award** to a psychology professor.

Peer Counseling is made of students who have completed Psychology 60, "Helping Relationships," and have taken or are enrolled in Psychology 61, "Applied Skills." The organization was formed to meet the needs of UMSL students who would be more comfortable discussing their concerns with other students who are specially trained to handle their problems. Workshops given by Peer Counseling include interviewing skills, time management, relation, resume writing, graduate school preparation, career exploration and more. Peer counselors are paid hourly. A career library and other sources are also offered.

The purpose of the **Mathematics Club** is to help students understand the concepts and useful applications of mathematics. Last year, a tour of the McDonnell-Douglas computer facilities was arranged.

Students interested in medicine can join the **UMSL Pre-Med Society**, the **Rho Nu nursing fraternity**, the **Student Optometric Association** and the **Health Opportunity and Careers Alliance**.

I AM INTERESTED IN LEARNING MORE ABOUT AN ORGANIZATION AT UMSL.

Name: _____ Type of organization: _____
 Address: _____ ☐ Curriculum ☐ Religious
 Zip: _____ ☐ Greek ☐ Political
 Phone: (Home) _____ ☐ Fine Arts ☐ Special Interest
 (Business) _____

Name of Organization: _____

Please drop off this form in the box across from the organization mailboxes on the second floor of the University Center. For more information, contact the Office of Student Activities in Room 250 U. Center or call 553-5536.

Religious involvement

Religious organizations serve a vital role at UMSL in spiritual fulfillment in a campus environment. All religious organizations welcome students of all denominations and all sponsor retreats of one kind or another as well as masses, prayer groups and Bible study. These organizations are eager to counsel students as well, and always have an open door to anyone. Also, most of these groups have an active social calendar with no membership dues. Financial arrangements are provided for members who may otherwise be unable to attend.

One active organization is the **Baptist Student Union**. This organization's highlights include a trip to National Student Week at Glorieta Conference Center near Santa Fe, N.M.; Student Growth Workshop; Christmas caroling at the Washington University Club, and a trip to see the Christmas lights at Our Lady of the Snows Shrine in Belleville, Ill.

The **Jewish Student Union** offers various get-togethers and functions for Jewish students as well as others, particularly during Jewish holidays. The union has several informational booths on campus throughout the year for interested students.

Moriah (Ministries) is for students with traditional Judeo-Christian philosophies and lifestyles. They distribute literature and sponsor lectures and movies.

Newman House, for Catholic and all other denominations, sponsors many social activities and has volunteered its services to the Cass House, a soup kitchen for the poor. The Newman House is located on Natural Bridge Road directly across from the campus, and offers masses weekly at the house.

Campus ministry of the **United Methodist Church** is provided through the UMSL Wesley Foun-

See "Religion," page 8

Physical education students with an accumulation of 30 points in P.E. fitness are encouraged to join the **Phi Epsilon Kappa** group to become involved in helping inform all students with their projects and programs related to physical activity.

Coffee klatches, a spring dance, awards banquets and regularly published newsletters are provided for evening students by the **Evening College**

Council. The council serves the evening students as a liaison to the faculty and administration and participates in student government.

For those interested in education, there is the **UMSL Student Missouri State Teachers Association**, **Kappa Delta Pi** (an honorary society of education) and **Student National Education Society**.

Greeks rush now

Fraternities and sororities are an important aspect of the UMSL student social environment. They offer many social, intramural, academic and community service functions. Throughout the year most groups host open-campus parties as well as their own private formals.

Most Greek organizations hold their rushes, or membership drives, during the first several weeks of school. Membership requirements may include completion of a pledge program, membership dues, and a minimum grade point average.

The **Interfraternity Council** and **Panhellenic Council** comprise member fraternities and sororities. They help set rules and guidelines for member organizations. They also coordinate Greek Week, a mini-Olympics designed to increase Greek visibility and interaction. Members of the **Interfraternity Council** include the **Pi Kappa Alpha**, **Sigma Pi**, **Sigma Tau Gamma** and **Tau Kappa Epsilon** fraternities.

Sororities who belong to the **Panhellenic Council** include **Alpha Xi Delta**, **Delta Zeta**, and **Zeta Tau Alpha**.

Fraternities and sororities that own their own housing include **Alpha Xi Delta**, **Pi Kappa Alpha**, **Sigma Pi**, and **Sigma Tau Gamma**.

Other fraternities and sororities at UMSL are also active and involved. **Alpha Kappa Alpha** sorority participated in the All-Greek Marchdown and supported the **United Negro College Fund**. **Alpha Phi Alpha** fraternity, with more than 500 chapters throughout the country, has made contributions to the **United Negro College Fund**, the **Shoes for the Needy** program, and the **Annie Malone Children's Home**. **Alpha Phi Omega** service fraternity sponsors the **APU Bookpool** at UMSL and the "Pennies for Professors Contest" for a scholarship fund at UMSL.

Delta Sigma Theta sorority, a public service organization, has contributed to the **United Negro College Fund** and the **Annie Malone Children's Home**, and has an ongoing monthly program with the **Echo Children's Home**. **Epsilon Beta Gamma** Fraternity has sponsored "Dusk to Dawn Study Halls," at UMSL. It has also supported various non-profit organizations and has donated holiday turkeys to the needy.

Gamma Nu Phi is a social-service fraternity supporting **Matthew-Dickey Boy's Club**, **Sickle Cell Anemia** and the **United Negro College Fund**. **Kappa Alpha Psi** fraternity sponsors the **Sweetheart Ball**, **Champagne Sip** and summer lunch program, and was involved with **UNICEF** ac-

Special interests fill gaps

There are a number of special interest groups at UMSL. Their type of activities and area of involvement vary from group to group.

The **Associated Black Collegians** is designed to enrich the lives of black students at UMSL, and to make them more comfortable in a predominantly white environment. Also, ABC helps advise students who have been discriminated against.

The **Cadet Club** consists of Army ROTC students. Some activities in which they are involved include rifle marksmanship, rappelling, land navigation, survival and orienteering. Scholarships are awarded to qualifying ROTC students.

The **Chad Everett Fan Club** exists to "honor Chad Everett, international television celebrity, film star, humanitarian and philanthropist."

UMSL Cheerleaders are financed and sponsored by student activities through the athletic department. Their purpose is to create school spirit and enthusiasm at UMSL varsity athletic events. Tryouts are held in early fall; the squad consists of six females and four males.

The **Disabled Students Union** is an organization which promotes understanding, sensitivity and accessibility for students with disabling conditions.

The **UMSL Hockey Club** was formed to provide hockey for

interested students and to develop friendly rivalry with other St. Louis area colleges and universities.

The purpose of the **International Students Organization** is to promote international and cultural exchange for UMSL students. Also it works to bring more international students to the campus.

The **Judo Club** of UMSL holds regularly scheduled workouts for those interested in martial arts.

The **UMSL Kayak Club** is the only such club at a St. Louis university. It teaches basic river

See "Interest," page 8

the arts

New series supplements classical schedule



GUEST MUSICIAN: Pianist Boris Bloch joins UMSL's Kammergild Chamber Orchestra Nov. 20 at the St. Louis Art Museum.

A new chamber music series cosponsored by UMSL and the Ethical Society of St. Louis will supplement classical music performances by the Kammergild Chamber Orchestra and various music department groups this season.

The new chamber music series will consist of two concerts at the Ethical Society auditorium, 9001 Clayton Road, and two concerts in UMSL's J.C. Penney Auditorium. All four concerts will start at 8 p.m.

The Laurentian Chamber Players from Sarah Lawrence College will perform Oct. 23 at the Ethical Society; the Cleveland Quartet will perform at UMSL Nov. 11.

The series will resume March 19 with the Enesco Quartet from Paris performing at the Ethical Society. Rome's I Musici Chamber Orchestra concludes the series April 23 with a concert at UMSL.

Season subscriptions are \$25, \$17.50 for University of Missouri faculty and staff, and students at other St. Louis area colleges, and \$10 for UM students. Single tickets are \$7, \$5 and \$3 for each group, respectively. For information call 553-5536.

The Kammergild Chamber Orchestra, UMSL's orchestra-in-residence, will present two concerts on campus in the J.C. Penney Auditorium and three at the

St. Louis Art Museum Auditorium. The season's theme is "Basically Bach."

Pianist Eugene Istomin will join director Lazar Gosman and the orchestra Oct. 9 in the J.C. Penney Auditorium. Istomin will perform Mozart's Concerto for Piano and Orchestra No. 14 in E-flat major, K. 449.

Guest artist Boris Bloch will join the Kammergild Nov. 20 at the St. Louis Art Museum, performing Bach's Concerto for Piano and Chamber Orchestra in D minor.

Mezzo soprano and Webster University vocal instructor Joanne Cruickshank will perform "Erbarme dich" from Bach's St. Matthew Passion and "Quae moerebat et dolebat" from Pergolesi's The Stabat Mater when she joins the orchestra Jan. 22 at the Art Museum.

The Kammergild will also perform March 25 at the Art Museum, finishing the season May 6 at UMSL.

Single tickets are \$5 and \$8; all concerts start at 8 p.m. Season, student and senior citizen tickets are also available. Call 553-5991 for more information.

The music department will also be presenting recitals and concerts throughout the year.

Associate professor Evelyn Mitchell will perform a piano recital at 8 p.m. Sept. 16 in the J.C. Penney Auditorium.

The University Band and Wind Ensemble will perform at 3 p.m. Oct. 23 in the Education Auditorium on the South Campus.

The Madrigal/Vocal Jazz Ensemble will present a seasonal concert at 8 p.m. Dec. 2 in Room 205 of the Music Building.

The University Singers and the University Chorus will sing seasonal music at 8 p.m. Dec. 6 in the J.C. Penney Auditorium.

"Amahl and the Night Visitors" will be performed by the Opera Workshop at 8 p.m. Dec. 16 in Room 205 of the Music Building. The group will also present "Don Giovanni" April 27 through 29 in the Benton Hall Theatre, 105 Benton Hall. Curtain rises at 8 p.m.; there will be an admission charge for this production.

The University Chorus will perform Brahms' German Requiem with the Kirkwood Symphony at 8 p.m. May 2 at the St. Louis Community College at Meramec.

Other concerts and recitals may be scheduled throughout the year; the events in this schedule may be subject to change. Call 553-5980 for more information on music department events.

(This article was compiled from information provided by the UMSL Office of Public Information.)

Theatre Project Company moves to West End location

Theatre Project Company, UMSL artists-in-residence in the speech communication department, is presenting a season of six productions, five at the company's new location at the New City School.

The season opener, William Shakespeare's "Much Ado About

Nothing," however, is to be staged in the new Cohen Amphitheatre at the Missouri Botanical Garden in south St. Louis.

Fontaine Syer and R.W. Miller star in the romantic comedy, which runs from Friday through

Sept. 11.

The rest of the company's season is to be performed at the New City School, 5209 Waterman in the Central West End.

Two one-acts by James McLure, "Lone Star" and "Laundry and Bourbon," are to be produced Oct. 28 through Nov. 20.

Brian Hohlfeld's adaptation of "Beauty and the Beast" follows Dec. 1 through 13.

The season continues Jan. 20 through Feb. 12 with "Translations" by Brian Friel, followed by David Mamet's "American Buffalo" Feb. 17 through March 11.

"E/R" by the Organic Theatre Company completes the 1983-84 season March 23 through April 15.

Project company's performances are at 8 p.m. Thursday, Friday, Saturday and Sunday, with Sunday matinees at 2 p.m. Tickets are \$8.50 Friday and Saturday and \$7 Thursday and Sunday. A \$1 discount is available for students with a valid I.D.

Call 531-1301 for ticket reservations or additional information.



MAKING MUCH ADO: Fontaine Syer, R.W. Miller (in the foreground) and Joneal Joplin (in the background) appear in the Theatre Project Company production of William Shakespeare's "Much Ado About Nothing."

Current announces policies

The Current will publish 28 issues this year, once a week on Thursdays throughout most of the fall and winter semesters.

Individuals wishing to contact the newspaper can call 553-5174. Persons seeking advertising information should call the Current Business Office at 553-5175.

The Current has announced its letters to the editor, "around UMSL" and classified advertising policies for the 1983-84 year.

The Current welcomes all letters to the editor. All letters must be signed and the writer's student number and phone number must be included. Non-students also must sign their letters, but only need to add their phone number.

Names for published letters will be withheld upon request, but letters with which the writer's name is published will receive first preference.

Responsibility for letters to the editor belongs to the individual writer. The Current is not responsible for controversial material in the letters, but maintains the right to refuse publication of letters judged by the editorial staff to be in poor taste.

Letters may be dropped off at the Current offices, 1 Blue Metal Office Building, or the University Center Information Desk. They may also be mailed to Letters to the Editor, Current, 1 Blue Metal Office Building, 8001

Natural Bridge Road, St. Louis, Mo. 63121.

Material for "around UMSL" should be submitted in writing no later than 3 p.m. Friday of the week before publication to Tina Schneider, around UMSL editor, Current, 1 Blue Metal Office Building, 8001 Natural Bridge Road, St. Louis, Mo. 63121. Phone items cannot be accepted. Material may be edited or excluded to satisfy space or content requirements.

Classified ads are free of charge for UMSL students and faculty and staff members. Please place your ad on the Classified Ad Forms available at the Current offices, 1 Blue Metal Office Building, or the University Center Information Desk. Include your name, ID number, phone number, and the classification under which your ad should run. Due to space limitations, only one ad per subject may run.

Event and meeting notices should be sent to the around UMSL editor, Tina Schneider.

The deadline for submitting ads is Friday, 3 p.m.

Individuals with story ideas or suggestions may wish to contact editor Kevin Curtin or one of the three section editors — Erik Schaffer, news, Frank Russell, features/arts, or Dan Kimack, sports.

The Current needs production assistants.

Modest pay or credit through the speech communication department is available. Call Sharon Kubatzky at 553-5174 for more information.

'48 Hrs.,' 'Gandhi' among UPB fall films



RISING STAR: Eddie Murphy, shown here in a scene from "Trading Places," stars in "48 Hrs.," which will be shown this weekend in the University Program Board film series.

The University Program Board has announced its Friday and Saturday film series for the fall semester.

Films are shown Friday and Saturday evenings at 7:30 and 10 p.m.; admission is \$1.50 for general admission and \$1 for students with a valid UMSL I.D.

"Saturday Night Live" star Eddie Murphy appears in his first film role "48 Hrs.," which is scheduled for this weekend, Sept. 2 and 3.

"Sophie's Choice," starring Meryl Streep and former St. Louisan Kevin Kline, continues the series Sept. 9 and 10.

Sylvester Stallone stars in "First Blood," to be shown Sept. 16 and 17.

"Without a Trace," a drama about a woman's search for her missing son, is scheduled for Sept. 23 and 24.

Dustin Hoffman stars in "Tootsie," to be shown Sept. 30 and Oct. 1. Jessica Lange won an Academy Award for best actress for her role in the picture.

Sean Penn stars as a spaced-out high school student in "Fast Times at Ridgemont High," scheduled for Oct. 7 and 8.

"Frances," starring Jessica Lange as actress Frances Farmer, is to be shown Oct. 14 and 15.

Paul Newman stars in "The Verdict," to be shown Oct. 21 and 22.

"Twice Told Tales" is planned for the weekend before Halloween, Oct. 28 and 29.

Television star Tom Selleck stars in "High Road to China," scheduled for Nov. 4 and 5.

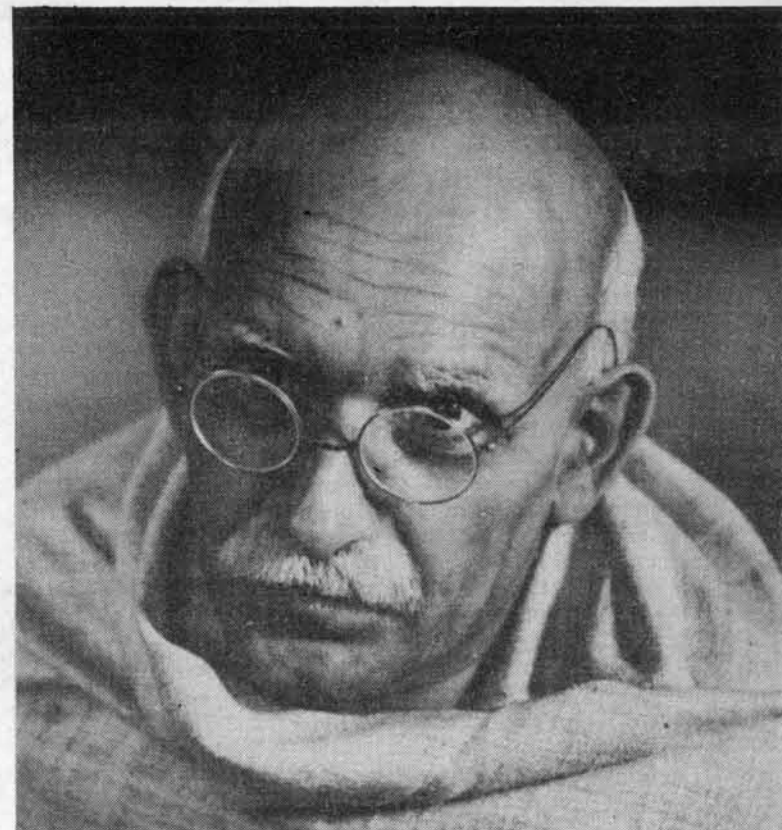
"Flashdance" continues the program Nov. 11 and 12.

Ben Kingsley stars in "Gandhi," to be shown Nov. 18 and 19. The film won Academy Awards for best picture, best director and best actor. There will be no 10 p.m. show this weekend only.

The series returns after Thanksgiving with the latest film in the James Bond series, "Octopussy," Dec. 2 and 3.

"War Games" concludes the series Dec. 9 and 10.

Tickets may be purchased at the door or in advance at the University Center Information Desk. Call 553-5536 for more information.



HONORED ACTOR: Ben Kingsley received an Academy Award for his performance in "Gandhi," to be shown Nov. 18 and 19 in the University Program Board film series.

U Players begin new lunch theater program

Although the University Players are offering less productions in their Benton Hall Theatre this season, the group has started a new Lunch Box Theatre series.

Student-directed one-act plays or scenes from upcoming productions will be staged by the U. Players on the University Center Patio or in various indoor locations, depending on the weather.

Lunch Box Theatre will be presented this Thursday and Friday, Nov. 3 and 4, Feb. 23 and 24 and Apr. 5 and 6.

The group will formally start its season Oct. 27 through 30. The players will present a musical to be announced; tickets will be \$3 for students with an UMSL ID and \$4 for the public.

An alumni variety show, in celebration of UMSL's 20th anniversary will be staged Dec. 2

through 4. Tickets will be \$2 for UMSL students and \$3 for others.

The players will produce student-directed readers' theater Dec. 9 through 11; admission will be \$1 for UMSL students and \$2 for the general public.

"The Tower" by Peter Weiss will be staged March 1 through 4. Ticket prices will be \$3 for general admission and \$2 for UMSL students.

Neil Simon's "The Star-Spangled Girl" will conclude the U. Players season April 13 through 15 with ticket prices of \$3 for the public and \$2 for UMSL students.

University Players productions are usually staged in their theater at 105 Benton Hall. Curtain rises at 8 p.m.

(This article has been compiled from information provided by the UMSL Office of Public Information.)

Photography emphasized in visual art season

The emphasis seems to be on photography in this year's visual arts season; at least five photography exhibits are planned so far.

"Tom Patton Photographs: Color Landscapes and the Night Works Series" opens the Gallery 210 season Sept. 6 through 23. Patton is a new assistant professor teaching photography in the art department.

Gallery 210 is located at 210 Lucas Hall. The gallery is open 9 a.m. to 9 p.m. Monday through Thursday and 9 a.m. to 5 p.m. Friday. There is no admission charge.

The Center for Metropolitan Studies, meanwhile, has scheduled at least three photography exhibits for the 1983 fall semester. Photographs by St. Louis physician Ralph Copp are on view Sept. 1 through 30, with an informal opening at 1 p.m. Sept. 1.

Photographs by Stan Strembicki, photography professor at Washington University, are on display Oct. 3 through 31 in the center, followed Nov. 1 through 30 by "St. Louis Gardens: Zoological and Botanical," an exhibit by photographer Candice Wolff.

The center is located at 362 SSB and is open from 8 a.m. to 5 p.m. Monday through Friday.

Gallery 210 celebrates UMSL's 20th anniversary Oct. 1 through 28 with an exhibit titled "20/20." The juried exhibit will include works in various media not exceeding 20 inches in length, width or depth.

Missouri artists over the age of 21 who live within 50 miles of St. Louis are eligible for the competition. Awards will be announced at the opening reception Oct. 1 from 2 to 4 p.m.

Artists may call 553-5976 for more information.

"Ernestine Betsberg — Paintings" is on view in the gallery Nov. 1 through 30. An opening reception for the St. Louis artist's exhibit will be held Nov. 1 from 7:30 to 9 p.m.

The gallery is planning two spring exhibits; viewing dates, however, have not yet been announced. Works by contemporary American Indian artist Jaune Quick-To-See will be on view; a photography exhibit organized by guest curator Jean Tucker will round out the season.

(This article has been compiled from information provided by the UMSL Office of Public Information.)

Everyone's a critic.

The Current needs writers to review theater, popular music, books and art. We also need feature writers and columnists. Credit is available through the speech communication department. Call Frank Russell at 553-5174 for more information.

PROJECT PHILIP

A new unique Bible Study designed for everyone.

Interdenominational, working in 45 countries
Provides correspondence course

Personal study, unless otherwise desired.
Offered free of charge. Free Bible.

Provided by:
Project Philip — College Campus
P.O. Box 11301 — Clayton P.O.
St. Louis, MO 63105

"Let A Bible Change Your Life."



Tony's Imprint

LETTER HEADS • BUSINESS CARDS • ENVELOPES
WEDDING INVITATIONS • STATIONARY • RESUMES
CARBON LESS FORMS • RUBBER STAMPS • MENUS

7978 FLORISSANT RD.
ST. LOUIS, MO. 63121

314-524-8995
TONY MERCURIO

10% DISCOUNT TO ALL UMSL STUDENTS
AND STAFF WITH YOUR ID

sports

Intramurals open for all UMSLites

Since its beginning, the intramural department has increased its facilities and the services that it offers to participants. In 1978-79 four outdoor racquetball courts were constructed. In 1980 the following improvements were made: The six tennis courts were resurfaced, two additional indoor racquetball courts were added to bring the number to four indoor and four outdoor, the weight room was expanded and renovated, and the Intramural Office was moved to a larger and more visible area. In addition, the intramural director's position was increased to a 12-month job and a summer program was added.

The major sports have remained in the curriculum while some less popular ones have been dropped. Due to an increased demand, new kayaks were purchased. Due to the improvements to the Mark Twain Building, demand for its use has increased. In 1982-83 over 13,000 people used the building for recreational activities.

Important reasons to participate in these activities are the fun and enjoyment, physical fitness, learning and interaction with other UMSL community members. In addition, the activities provide social, mental and physical awareness.

In order to serve the total UMSL community, the intramural department has expanded to include programs beyond the

traditional programs for 18- to 22-year-olds. Some of these include family participation, non-traditional hours, and more leisure activities. For the 1983 fall semester the department will provide a broad range of activities in which to participate.

September's schedule will include touch football (both men's and women's divisions), kayaking, bowling (students, faculty and staff), tennis (all divisions), and golf.

October will feature coed volleyball, the Fun Run (1.5 and 3 mile courses), soccer (nine-man outdoor), and basketball (three-on-three, both men's and women's divisions).

For November, there will be coed hoc-soc (indoor soccer), racquetball (all divisions), and a basketball free throw contest. Semester-ending December finds weightlifting on the schedule.

Throughout the semester, the ongoing swimming program "Swim the Mississippi River Club" allows club members to schedule their own times in the Mark Twain pool. They then swim the pool until they've covered the entire length of the river. That event begins in September and carries on throughout the semester.

Teams or individuals interested in participating in any intramural activities must obtain entry forms from the Intramural Office in the Mark Twain Building. All forms must include

See "Intramurals," page 7

Intramural activities slated for 1983-84

Activities	Deadline	Begins	Days	Times
Swim the Mississippi River Club	None	Anytime	All Semester	Pool Hours
Touch Football; Men's, Women's	Sept. 8	Sept. 13		2 & 3 & 4 p.m.
Kayaking	Limited #	Sept. 14	Wednesdays	6-8 p.m.
Bowling; Students, Fac., Staff	Sept. 13	Sept. 15	Thursdays	6:30 p.m.
Tennis Tournament; All Divisions	Sept. 14	Sept. 17	Sat.-Fri.	TBA 9/15
Golf Tournament	Sept. 29	Sept. 30	Friday	9 a.m.-3 p.m.
Coed Volleyball	Sept. 27	Oct. 3	Mon./Wed.	7-10 p.m.
Fun Run; 1½ and 3 mile courses	None	Oct. 4	Tuesday	Noon & 2 p.m.
Soccer (nine-man)	Sept. 30	Oct. 5	Mon./Wed.	2 & 3 & 4 p.m.
Basketball (3 on 3); Men's, Women's	Oct. 19	Oct. 25	Tues./Thurs.	1 p.m.
Racquetball Clinic for Beginners	Oct. 29	Nov. 1 & 3	Tues & Thurs.	2-3 p.m.
Coed Hoc Soc	Nov. 3	Nov. 7/9	Mon./Wed.	7-10 p.m.
Racquetball; All Divisions	Nov. 7	Nov. 14	Mon.-Sat.	TBA 11/10
Basketball; Fre Throw Contest	None	Nov. 15	Tues.-Fri.	11 a.m.-2 p.m.
Weightlifting	Dec. 1	Dec. 1	Thursday	2 p.m.

For additional information contact the intramural department, Room 203 Mark Twain Building.

UMSL teams invite participation

The UMSL intercollegiate athletic teams — comprising men's and women's soccer, women's volleyball, men's and women's basketball, men's and women's swimming, men's baseball, women's softball, men's and women's tennis, and men's golf — welcome student participation in many forms.

Athletic competition at UMSL, especially for the walk-on athlete, is open to any students with the necessary skills and requirements. Some walk-on athletes have gone as far as to become

All-American in their respective sports, with others proving beneficial to the Rivermen and Riverwomen in their athletic endeavors.



UMSL is also looking for cheerleaders, statisticians and sports information assistants. If you are interested in any of these

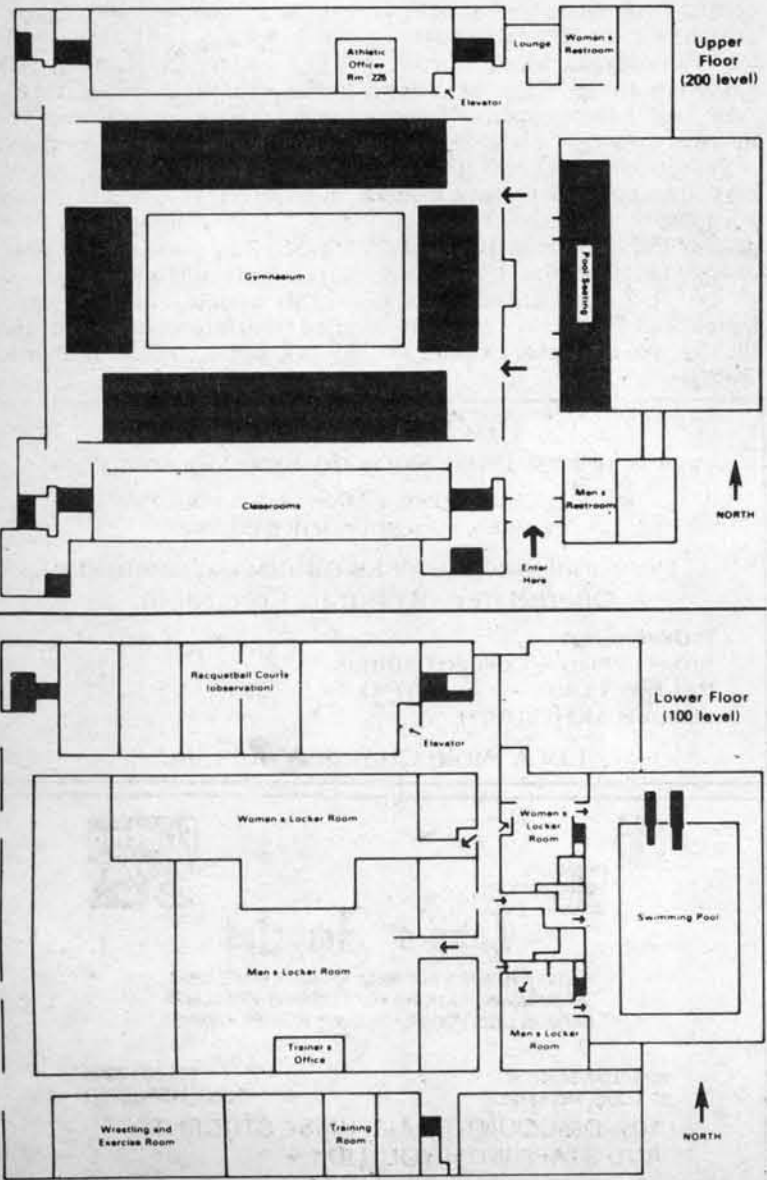
areas, your involvement is eagerly welcomed by the athletic department.

UMSL is part of the Missouri Intercollegiate Athletic Association. MIAA member institutions are Northeast Missouri State, Northwest Missouri State, Southeast Missouri State, Central Missouri State and Lincoln universities, and the University of Missouri-Rolla.

For further information, call Athletic Director Chuck Smith or any other staff member at 553-5121.

Mark Twain holds fitness and fun

Diagram of Mark Twain complex



The Mark Twain Building and surrounding athletic fields are located on the north end of the campus near Florissant Road. The complex consists of a brand new 1,300-seat soccer stadium, a softball field, a baseball field, six outdoor tennis courts, outdoor recreation and intramural areas, indoor and outdoor handball/racquetball courts, a gymnasium which seats 5,641, an indoor swimming pool, an exercise and conditioning room, a weight room, complete men's and women's locker facilities, and a fully staffed training room.

Use of the Mark Twain Building and its facilities is free of charge to UMSL students with a valid ID card. Student parking is available adjacent to the complex. UMSL students are welcome to bring guests to use the facilities at Mark Twain. However, a \$2 a day fee will be charged for the guest, except for the use of the racquetball courts, where a \$4 a day fee is imposed.

Hours for the gymnasium are Monday through Friday, 9:30 a.m. to 2 p.m.; Tuesday and Thursday

nights, 6:30 to 9 p.m.; and Saturday and Sunday, 1 to 5 p.m.

The swimming pool hours are Monday, Wednesday and Friday, 11 a.m. to 2 p.m.; Tuesday and Thursday, noon to 2 p.m. and 6:30 to 9 p.m.; and Saturday and Sunday, 1 to 5 p.m.

The racquetball courts and weight room are open Monday through Friday, 7:30 a.m. to 5:30 p.m.; Tuesday and Thursday nights from 6:30 to 9 p.m. and Saturday and Sunday, 1 to 5 p.m. Reservations are required for use of the racquetball courts. In order to insure getting a court, reservations should be made one day in advance. They can be made by calling the UMSL intramural department at 553-5125.

For students using the locker rooms, a free towel and soap will be provided with a valid ID. Students are also allowed to rent equipment through the intramural office by simply leaving their ID while using the equipment.

All regularly scheduled home athletic events at UMSL which are played on campus are free to

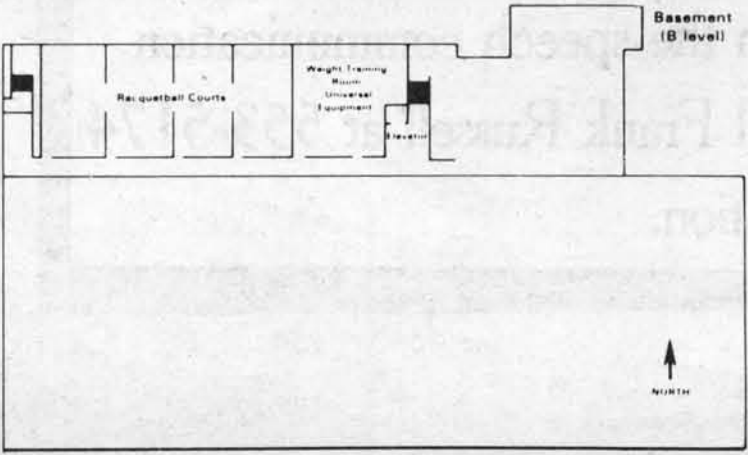
UMSL students with a valid ID card. Each semester, full-time students contribute \$17.50 through the University Center and student activities fee to help support the UMSL athletic program.

UMSL has men's and women's intercollegiate teams. In the fall, UMSL offers men's and women's soccer and women's volleyball.

UMSL has been a member of the Missouri Intercollegiate Athletic Association since 1980. This allows UMSL athletes the opportunity to compete against some of the top individual performers and teams in the state. Other MIAA teams include Northeast Missouri State, Northwest Missouri State, Southeast Missouri State, Central Missouri State and Lincoln universities and the University of Missouri-Rolla.

The UMSL athletic department puts out a monthly calendar of events which shows what is being offered and when the Mark Twain Building is closed for special events. These calendars are located in the Mark Twain Building and are also posted on bulletin boards around campus. Students can call the intramural department at 553-5125 to find out what is on the monthly schedule or for information on what is being offered.

For information about UMSL's athletic program, or for team schedules, call the athletic department at 553-5641 or UMSL Sports Information at 553-5121. Students may also ask any UMSL coach or staff member about his or her specific program or check with Sports Information Director Frank Viverito at 553-5121.



Tough schedules to test UMSL soccer teams

The UMSL soccer program has gained national acclaim in recent years, as both the men's and women's teams have earned National Collegiate Athletic Association tournament bids in recent years.

The men's team enters the 1983 season with 11 consecutive tournament bids, while the women's team has made the NCAA final four in each of its first two seasons of play.

Home games are free of charge to UMSL students who possess a valid student identi-

fication card. The UMSL faculty and staff, senior citizens, and children are charged a \$1 admission fee, while non-students and adults pay \$2 for admission at the gate.

Season tickets are also available for non-students. The cost for adults is \$20, with faculty, staff, senior citizens and children paying a \$10 fee.

The UMSL soccer field is located behind the Mark Twain Building at the north end of the campus.

UMSL Athletic Staff

Title	Name	Phone
Athletic Director.....	Chuck Smith	553-5641
Women's Coordinator/Asst. A.D....	Judy Berres	553-5643
Men's Soccer Coach.....	Don Dallas	553-5661
Women's Soccer Coach.....	Ken Hudson	553-5641
Volleyball Coach.....	Cindy Rech	553-5646
Men's Basketball Coach/Asst. A.D.		
.....	Rich Meckfessel	553-5641
Women's Basketball Coach.....	Mike Larson	553-5638
Swimming Coach (men's and women's)		
.....	Rich Fowler	553-5641
Baseball Coach.....	Jim Dix	553-5647
Softball Coach.....	Mike Larson	553-5638
Men's Tennis Coach.....	Richard Rauch	553-5641
Women's Tennis Coach.....	Pam Steinmetz	553-5646
Golf Coach.....	Jim Niederkorn	553-5661
Trainer.....	Ted Struckmann	553-5686
Intramural Director.....	Larry Coffin	553-5124
Sports Information Director.....	Frank Viverito	553-5641

All athletic offices are located at 225 Mark Twain Building.

Men's soccer schedule

Date	Opponent	Site	Time
Sept. 2	Tulsa	Home	7:30 p.m.
Sept. 10	Saint Louis U.	Away	7:30 p.m.
Sept. 16	UM-Rolla vs. Sam Houston	Home	5:30 p.m.
	UMSL vs. Xavier	Home	7:30 p.m.
Sept. 17	UM-Rolla vs. Xavier	Home	5:30 p.m.
	UMSL vs. Sam Houston	Home	7:30 p.m.
Sept. 20	Lindenwood	Home	7:30 p.m.
Sept. 24	Air Force	Away	TBA
Sept. 25	Colorado College	Away	TBA
Sept. 28	Southeast Missouri State U.	Home	7:30 p.m.
Oct. 1	Northeast Missouri State U.	Home	7:30 p.m.
Oct. 5	Washington U.	Home	7:30 p.m.
Oct. 7	UMSL Budweiser Classic:	Home	
	—Benedictine vs. Mo. Southern		5:30 p.m.
	—UMSL vs. Southwest Mo. State		7:30 p.m.
Oct. 8	UMSL Budweiser Classic:	Home	
	—Consolation		5:30 p.m.
	—Finals		7:30 p.m.
Oct. 11	SIU-Edwardsville	Home	7:30 p.m.
Oct. 14-15	Open	Home	TBA
Oct. 19	McKendree	Home	7:30 p.m.
Oct. 22	UM-Rolla	Away	7:30 p.m.
Oct. 29	Quincy	Away	2 p.m.
Nov. 6	Illinois State	Away	2 p.m.

Women's soccer schedule

Date	Opponent	Site	Time
Sept. 10	U. of Central Florida	Away	4 p.m.
Sept. 11	Hartwick College	Away	11 a.m.
Sept. 11	U. of Cincinnati	Away	7 p.m.
Sept. 17	Missouri Baptist College	Home	2 p.m.
Sept. 18	Lindenwood College	Home	2 p.m.
Sept. 23-25	St. Louis National Women's College Budweiser Tourney*	Home	TBA
Sept. 30	SIU-Edwardsville Tourney	Away	TBA
Oct. 1	SIU-Edwardsville Tourney	Away	TBA
Oct. 5	Quincy College	Away	4 p.m.
Oct. 11	SIU-Edwardsville	Home	5:30 p.m.
Oct. 14-16	Colorado College Tourney	Away	TBA
Oct. 22	U. of Mo.-Rolla	Away	5:30 p.m.
Oct. 29	Carleton College	Away	2:30 p.m.
Oct. 30	U. of Wisconsin-Madison	Away	noon
Nov. 5	Regionals — First Round	TBA	TBA
Nov. 12	Regionals — Second Round	TBA	TBA
Nov. 19-20	NCAA Nationals	Away	TBA

* Budweiser Tourney Teams include:
UMSL SIU-Edwardsville Metropolitan State U.
U. of Mo.-Rolla Quincy Stanford U.
Lindenwood MacAlester Maryville.
Wis.-Madison

UMSL All-American athletes

Name	Sport(s)	Year(s) Selected
Kevin Missey	Soccer	69-70/73-74/74-75
John Garland	Soccer	72-73
Jim Munden	Baseball	71-72
Steve Buckley	Soccer	71-72
Frank Tusinski	Soccer/Baseball	72-73
Bobby Bone	Basketball	74-75/75-76/76-77
Jim Lockett	Baseball	78-79
Dominic Barczewski	Soccer	79-80
Dan Musenfelter	Soccer	79-80
Tim Murphy	Soccer	81
Joan Gettemeyer	Women's Soccer	81/82
Jan Gettemeyer	Women's Soccer	81/82
Patty Kelley	Women's Soccer	82

Intramurals

from page 6

signature and UMSL identification numbers and must be submitted before the entry deadline. A fee of \$10 will be required with each entry form and will be returned upon completion of the schedule unless the team should forfeit a game. All sporting equipment is available for all activities.

Events, entry dates and monthly calendars will be posted on the intramural bulletin board in the Mark Twain Building. Flyers and releases will be posted around campus. The Current will publish advance notices, standings and results on a regular basis.

If you do not wish to organize a team but would like to play on one, you may contact the Intramural Office and arrangements will be made. All participants must be either a student, faculty or staff member with a valid ID card. Alumni with current passes may participate for a nominal fee.

Current coverage

Throughout the 1983-84 school year, the Current sports page will cover all nine varsity athletics affiliated with UMSL. Primarily, stories will be written in a feature format. Intercollegiate athletics, intramurals, sports columns, and special features stories will be run.

At the beginning of each team's season, there will be preview articles of those teams.

Also, a standings column will run on the first page of the sports section, to provide quick-glance reference as to how UMSL teams are doing in their prospective leagues and conferences.

Coming up, look for the men's soccer preview story, along with stories on volleyball, a new head coach, and more.

EVERYTHING FOR THE STUDENT

Large selection of books, clothing, household items and furniture.

Show your student I.D. and receive a 10% discount.

Second Edition Resale Shop
7947 Page (at Hanley)
721-4420

All proceeds benefit Life Skills Foundation for the Retarded.

Captain D's. 4 Can Eat For \$6. SUMMER SAVINGS

Use these coupons one at a time or all at once.
Either way you'll get four delicious meals for only \$6.00.

CLIP THIS COUPON

FISH & FRIES FOR ONLY \$1.50
Two tender fish fillets, natural cut french fries and 2 southern style hush puppies.

Offer expires Sept. 30.
Not good with any other special or discount.
(at participating Capt. D's.)

Captain D's.
a great little seafood place.

CLIP THIS COUPON

FISH & FRIES FOR ONLY \$1.50
Two tender fish fillets, natural cut french fries and 2 southern style hush puppies.

Offer expires Sept. 30.
Not good with any other special or discount.
(at participating Capt. D's.)

Captain D's.
a great little seafood place.

CLIP THIS COUPON

FISH & FRIES FOR ONLY \$1.50
Two tender fish fillets, natural cut french fries and 2 southern style hush puppies.

Offer expires Sept. 30.
Not good with any other special or discount.
(at participating Capt. D's.)

Captain D's.
a great little seafood place.

CLIP THIS COUPON

FISH & FRIES FOR ONLY \$1.50
Two tender fish fillets, natural cut french fries and 2 southern style hush puppies.

Offer expires Sept. 30.
Not good with any other special or discount.
(at participating Capt. D's.)

Captain D's.
a great little seafood place.

MONDAY AND TUESDAY

Two 2 Piece Fish Dinners \$3.69

Each dinner includes: two golden brown fish fillets, crisp french fries, creamy cola slow and 2 southern style hush puppies.

11301 New Halls Ferry
838-3050

4625 Gravois Ave.
352-2920

10522 St. Charles Rock Road
428-5377

Coming in October:
Grand and Chateau location

Wednesday
4 p.m. to close
ALL YOU CAN EAT
Country Style Fish
\$3.29

Fast Drive Thru
Services
Dine In or Carry Out
Open 10:45 a.m.

Captain D's.
a great little seafood place.

University Program Board and
University Center present

WEDNESDAY NOON LIVE

FANFARE

August 31, 1983

11 a.m. to 1 p.m.

University Center Patio or
University Center Lounge

Political pride provides proven punch

Political organizations were added as a separate category of organizations at UMSL this year. These include several different political ideals and philosophies. Some of the groups are oriented to politics at UMSL, while others pertain to national and world scopes. Most political groups feature guest speakers and are open to all students.

A political group looking for students who want "freedom and security as well as information about communism," is the **Collegiate Anti-Communists**.

The **Model United Nations Group** is beneficial to students interested in United Nations affairs and international politics.

Democrats at UMSL have two groups to choose from. The **Conservative Democrats** are interested in "opposing radicalization of the party and in regaining many of the traditional Democrats who have swayed to voting for Republicans." **UMSL Student Democrats** provide a forum where government officials can interact with students. Its only requirements are to care about your country and to attend the meetings.

For Republican students there is the **College Republicans**, an organization that discusses the "goals and platforms of the Republican Party and provides support for Republican candidates in election years."

The **Progressive Conservatives** join with Saint Louis University and Washington University groups for occasional film showings and political actions. This group maintains a reference library, and provides periodicals the the Thomas Jefferson Library for student and faculty use.

Political and social activities make up the **Political Science Academy**. The group has sponsored a "Day of Concern," and assisted in a petition drive to extend the library hours on campus. Some members belong to Sigma Pi Alpha, the national political science fraternity.

The UMSL Student Association is the student government. The legislative branch is the Student Assembly, the judicial is the Student Court, and the executive are elected officers such as president and vice president. In the fall semester members of the assembly are elected with one seat per 300 students representation. Student Association is active in important issues at UMSL.

The **Fighting Spirit** is a campus-based student political group. Its only eligibility requirement is to agree with the organization's platform. In the past, it has elected one president and one vice president to the Student Association.

Members of newly formed group, **UMSL Students for Action**, are in favor of vocal representation at all levels of the political process.

tivities. **Omega Psi Phi** fraternity's activities include an all-Greek cruise down the Mississippi River and a social at the UMSL Fun Palace. Service activities were done for the Ferrier Home for the Aged and Cardinal Glennon Hospital.

Religion

from page 3

dation. The foundation has various social events and projects including "Mark Twain at UMSL" (in the person of Bill McLinn), and a weekend course in October on the Christian understanding of human sexuality.

Bible Study at UMSL meets every Thursday at noon in the University Center. Members study a different chapter of the Bible at each meeting. On Monday mornings they have a tractable setup in the University Center for students to explore. The **Christian Ministry Group** features Bible study and a chance for students interested in God to interact with one another.

Finally, the **InterVarsity Christian Fellowship** provides an opportunity for the UMSL community to develop its Christian lifestyle. They hold discussion groups Wednesday and Friday mornings, and have made several trips to conferences.

Offices

from page 1

Disabled, Minority, and International Student Services

Disabled, Minority, and International Student Services provides information, guidance and referral concerning the needs of these groups. Assistance in pro-

viding for the accessibility needs of students with both permanent and temporary disabilities is available through this office. This service also works as a resource center for minority and international students as it works to acclimate these two groups to the UMSL campus. The office is located at 301 Woods Hall. The phone number is 553-5211.

Clip and save schedules

Computer Center		Thomas Jefferson Library	
Monday-Thursday	8 a.m.-9 p.m.	Monday-Thursday	8 a.m.-10 p.m.
Friday	8 a.m.-8 p.m.	Friday	8 a.m.-5 p.m.
Saturday	9 a.m.-5 p.m.	Saturday	CLOSED
Sunday	1 p.m.-8 p.m.	Sunday	1 p.m.-10 p.m.
Education Library		The Cashier's office will remain open till 8 p.m. during the first two weeks of the semester.	
Monday-Thursday	8 a.m.-9 p.m.		
Friday	8 a.m.-5 p.m.		
Saturday	CLOSED		
Sunday	1 p.m.-6 p.m.		
Women's Center		Cashier's Office	
Monday-Friday	8:30 a.m.-5 p.m.	Monday-Friday	8 a.m.-5 p.m.
University Center Information Desk		Fun Palace	
Monday-Thursday	10 a.m.-6:15 p.m.	Monday-Friday	10 a.m.-2 p.m.
Friday	10 a.m.-3 p.m.	Peer Counseling	
Bookstore		Monday-Friday	8 a.m.-5 p.m.
Monday-Thursday	8:30 a.m.-8:30 p.m.	Health Center	
Friday	8:30 a.m.-4:30 p.m.	Monday-Thursday	8 a.m.-9 p.m.
South Campus Cafeteria		Friday	8 a.m.-5 p.m.
Monday-Thursday	8:30 a.m.-6:30 p.m.	Counseling Center	
Friday	8:30 a.m.-2 p.m.	Monday-Friday	8 a.m.-5 p.m.
Underground		Summit	
Monday-Thursday	7:30 a.m.-6:30 p.m.	Monday-Thursday	7 a.m.-10 p.m.
Friday	7:30 a.m.-2 p.m.	Friday	7 a.m.-5 p.m.

Interest

from page 3

navigating and safety skills. Club members may use the UMSL pool and kayaking gear for an eight-week training session held on Wednesday evenings.

Outback provides an opportunity to learn and use outdoor skills. It regularly plans activities such as bicycling, backpacking, caving, canoeing, rappelling, climbing and camping.

The **Parliamentary Law Association** meets approximately three times per semester and studies parliamentary procedure. There are no membership dues, however a copy of "Robert's Rules of Order" is recommended.

The **UMSL Ping-Pong Team** is open to all students interested in table tennis and will schedule matches with other colleges and universities.

For sports car enthusiasts there is the **UMSL Sports Car Club**. This group has had an Auto Cross, a Road Rally, and meetings.

The **Ultimate Frisbee Club** participates in Ultimate Frisbee Football. It will also conduct frisbee clinics and hold regular meetings.

The **Student Foundation** primarily raises money for student scholarships and loans, and occasionally works with other campus organizations. There are no dues and anyone may attend the meetings.

The **Students With Concerns for Children** is for those who wish to improve the availability of child care.

The **Veterans Club** explores issues of concern to military veterans, such as stress, Agent Orange, and readjustment.

And finally, **VW's ROK** is an organization for students who own or are interested in Volkswagens.



The UMSL University Program Board presents

AN EXCITING LINEUP OF EVENTS INCLUDING:

Concerts, Lectures, Films, Video, and more

★★★★ Friday and Saturday Night at The Movies Highlights ★★★★★

WAR GAMES

FLASH DANCE



THE VERDICT

DUSTIN HOFFMAN Tootsie

48 HRS.

SOPHIE'S CHOICE

All New!!

Aired on American Cablevision



One of the first programs of its kind in the country!

Wednesday Noon Live Concerts



11:00 a.m. - 1:00 p.m.

at U. Center

LOOK FOR OUR FUTURE ADS