

University of Missouri, St. Louis

IRL @ UMSL

Current (1980s)

Student Newspapers

4-10-1986

Current, April 10, 1986

University of Missouri-St. Louis

Follow this and additional works at: <https://irl.umsl.edu/current1980s>

Recommended Citation

University of Missouri-St. Louis, "Current, April 10, 1986" (1986). *Current (1980s)*. 188.
<https://irl.umsl.edu/current1980s/188>

This Newspaper is brought to you for free and open access by the Student Newspapers at IRL @ UMSL. It has been accepted for inclusion in Current (1980s) by an authorized administrator of IRL @ UMSL. For more information, please contact marvinh@umsl.edu.

BA Degree Now Not Enough

(CPS) — Middle- and lower-income students can improve their earning power dramatically by filling away their business bachelor's degrees and going on for master's degrees in business administration (MBA), a new study has found.

But the highly touted MBA doesn't help upper-middle and upper-income students earn much more than they could without an

MBA, the study also concludes.

The study of 346 graduates of the universities of Missouri, Kansas and Oklahoma also discovered that women from the middle, lower-middle and lower classes earned as much as their male counterparts four to five years out of school — half the sample had BAs and half had MBAs.

"We think it's very gratifying finding equality (between the

sexes) for the lower group," says Tom Dougherty, the University of Missouri-Columbia management associate professor who directed the study.

Within four to five years of earning their MBAs, graduates from the lower classes were making about \$11,000 more a year than economically similar students who earned just business bachelor's degrees.

MBAs, however, didn't help improve the earning power of students from the upper economic classes.

"Students from the upper group already have the skills and contacts necessary for success," Dougherty says, "whereas the MBA may provide the extra socialization that those from the

See "Business," page 3

Diane Magrath Speaks Up For Women

Steven Brawley
managing editor

Women leaders often take more risks and use their intuition more, Diane Skomars Magrath said during a conference on women and leadership here last Friday.

Magrath is the wife of UM President C. Peter Magrath. However, she terms herself as being his "married partner."

As the wife of the president, she receives 30 percent of her husband's salary for her various duties as the first lady of the UM system.

Magrath told the conference "Partnership, networking, team work, cooperation, and working independently are all notions that especially fit well for women."

During her keynote address to the conference, Magrath outlined six areas where she feels women approach leadership roles differently from men.

"I will not be discussing leadership in terms of goals, success, ego, and competition, characteristics that have traditionally been tied to leadership, and, frankly, men."

She described a style that involved women's leadership in terms of it being a process; its focus on others and not self, its use of the intuitive voice, its risk taking, and its support system.

"In my own life I have found I am most creative, most energetic and most successful when I work in relationship with others and we brainstorm and support and evaluate ourselves," she said.

Her description of her relationship with her husband reinforces her beliefs.

"I work in partnership with Peter Magrath, he is the president, he is my boss, but together we strategize the future, critique each other's work, travel together about half the time, and often stand shoulder to shoulder in receiving lines and at microphones."

Magrath is co-editor of the book,

See "Magrath," page 3



Construction Springs Up, Both Inside And Out

The recent unseasonably warm weather has kept many campus construction projects right on schedule. Left, workmen burn tile off the floor of the bookstore in the basement of the University Center during its renovation, while workmen below use finishing tools on the new sidewalks leading into Garage H.

Photos By
Steven Brawley



Aquino Witness To Recent Election Speaks

Monica Lauer
reporter

An eyewitness of the Philippine election process and revolution spoke here last Thursday, detailing recent events in the Philippines.

James R. Rush, recently returned from the Philippines, where he was covering the election and post election developments for the Universities Field Staff International (UFSI), spoke before the UMMSL community.

He characterized the mood of the country last fall as "in a profound state of despair. The autumn was a time when futility was the major emotion people expressed in public and in private."

The reasons for this hopelessness were the promises of elections that were never held, the inability of the opposition leaders to unite, and the knowledge that there would be no justice for the death of Benigno Aquino, the late husband of Corazon Aquino, who was assassinated when he returned to the Philippines to run against Marcos in an earlier election, Rush said.

An example of the general helplessness of the people was shown during a forum at the University of the Philippines that addressed the question, "What is our political future?" One political scientist ended his speech with the

statement, "What are the chances for a liberal democratic alternative in the Philippines? There are none."

Rush said that last October this attitude was justified because the political forces of the center could not unite and assert themselves in the political process.

"I believed at the time, and almost everyone with whom I talked over these matters also believed, that the political momentum in the Philippines was clearly and probably irrevocably in the hands of the left, and probably the far left," Rush said.

He said the Communists were the only force that offered hope for political change in the Philippines through armed insurrection.

When Rush returned to the Philippines in January, he was astonished at the change in the emotional state of the people, even though he had kept up with the political events in the country. The Filipino people were caught up in Corazon Aquino's campaign for the presidency.

"From an atmosphere that was reeking with despair, here was an atmosphere in January that was full of hope," Rush said. When the leftist forces attempted to get people to boycott the election, claiming it was fraudulent, the people didn't go

See "Rush" page 5

UMSL Health Fair Includes Screening, Blood Testing

Health Fair USA will come to UMSL Wednesday, April 16, from 9 a.m. to 4 p.m. in the Mark Twain Building. UMSL is just one site selected for an area-wide Health Fair USA Week, April 14 to 19.

Health Fair is part of a national volunteer effort to make an impact on the health and well-being of Americans. It is an area-wide screening project designed to identify potential health problems, such as high blood pressure, vision problems, obesity, etc. Health Fair does not make a diagnosis of a health problem.

It does alert individuals to problems that should be followed up by a physician and can direct you to facilities where you can have that follow-up done.

Last year 18 percent of the individuals screened were detected to have some abnormality and advised to have more hearing loss, elevated blood pressure, weight and oral problems. Health Fair is also an opportunity to learn a little more about health practices.

Area-wide, the Health Fair is

sponsored by General American Life Insurance Company, KMOX-TV Channel 4, and St. Louis Bi-State Chapter American Red Cross in conjunction with the National Health Screening Council for Volunteer Organizations, Inc., a private, non-profit organization based in Maryland. On-campus sponsors are the UMSL Student Health, UMSL School of Nursing, UMSL School of Optometry, and UMSL Physical Education Department. All these organizations on campus are volunteers.

The UMSL site will offer blood pressure checks, visual acuity and glaucoma testing, height and weight checks, and body frame size. When you register as a participant in Health Fair, a health history will be taken. Before you leave, your test results will be reviewed with you by a registered nurse and you will be given information on referral facilities if you do not have a private physician or clinic. The testing is free.

See "Health" page 3

Senate Votes Counted

Craig A. Martin
news editor

Twenty-five students were elected to the University Senate April 1 and 2 in campus-wide elections, said J. Hulsey-Mazur, Student Association administrative chair.

The students, in the order they appeared on the ballot, were:

Tom Bommarito, Steven Thomas, Jackie Dilg, Verna Blevins, Robert Dawes, Barbara Willis, Kevin Polito, Steve Bratcher, Sheila Johnson, Edward Kennedy, Hilary Shelton, Michele Smith, Steve Daugherty, Phil Thoman, Bryan Overman, Kevin Lacostello, Mark Niemeyer, Russel Houston, Robert Doyle, Kathy Grossheim, Steve Wolfe, Jerry Eulentrop, Linda Pavlakes, Ken Meyer and Connie Foster.

The normal procedures for vote counting in the election had to be modified this year, according to Mazur.

The votes are usually counted by the SA administrative chair, the election commissioner and the chief justice of the student court.

"We realized Wednesday afternoon that the student court chief justice was Steve Daugherty, and that he also was a candidate for Senate," said Mazur.

"So we called Student Affairs and asked that another justice from the court be provided to help count ballots. When none showed up, we counted them ourselves and will present all of the information to the Student Court for approval," he said.

All ballots and information are available for public inspection in the Student Association office in the University Center.

The University Senate consists of 75 faculty and staff members and 25 students elected at large.

The Senate deals with university issues ranging from policy decisions to curriculum changes.

Homesharing To Expand Here Soon

Jacqui Lauer
reporter

Student Activities in cooperation with the County Older Residence Program are working on a new program, homesharing, and plan to have it in full swing this summer said Jan Archibald, student service advisor.

Homesharing is an opportunity for students to live within a five mile radius of the campus, and for senior citizens living alone to share their homes with someone who can help out with odd jobs around the house, said Marilyn Maguire, director of the Eldercare Center.

Homesharing is in the planting stage. The program was thought up when Chancellor Arnold B. Grobman sent an article to Maguire concern-

ing a similar program in another state. Then Maguire heard about a program at Penn Valley Community College in Kansas City, which has been operating for five years.

Both branches of the program talk to the person interested, explain the program to them and screen them by phone or by a questionnaire. The questionnaire is there to help avoid putting non-smokers with smokers. It is the first step in negotiating the cost of rent, Archibald said.

Rent expenses vary, depending on the needs of both parties. The average charge is about \$40 a week, said Valerie White, of CORP. It is rare that a student will receive free room and board, but not out of the question. Helen

McCaan, an 82-year-old widow, is offering Roxanna Cue a rent-free room, in return for Roxanna's help around the house. Cue and McCaan are the second match, homesharing has brought together.

Roger Chiu and Clarence Rafferty were the first match under the program. Chiu, a business administration student at UMSL, commuted back and forth from South County, and felt the time on the road could be used for studying. Chiu helps out with the more strenuous chores, taking out the garbage and doing outside work. "We respect old people," Chiu said in a recent interview. "Older people have wisdom to offer." It is with that respect and honor that

Chiu zips Rafferty's jacket, who is beginning to get arthritis.

CORP has received many inquiries from the elderly, but one third of them aren't ideal situations. "It takes a unique kind of person to live in that setting," White said. "And we have found that foreign students work better." She hopes that American students will turn the tables and show that they are just as respectful of the elderly.

Ginger Moore, a student at UMSL, is working under Maguire, said that applications will be available this summer.

Homesharing has made another match recently, Josephine Holland, 74, and Rashid Salim, 19, a student at St. Louis University.

See "Home," page 3

INSIDE: ☐ MORE NEWS/Page 2 ☐ EDITORIALS/Page 4 ☐ CLASSIFIEDS/Page 6 ☐ AROUND UMSL/Page 6 ☐ FEATURES/Page 7 ☐ SPORTS/Page 9



CHEERLEADING

The UMSL cheerleading squad likes to describe itself as small but enthusiastic. They spend the year conditioning for basketball season.

Page 7



VIDEO

Rob Reiner's romantic comedy, "The Sure Thing," starring John Cusack and Daphne Zuniga, deals with a teenage couple forced to travel together.

Page 8



BASEBALL

The Rivermen baseball team has been on a tear of late winning seven of eight games last week bringing their overall season record to 14-7.

Page 9

Incentives

Curators To Consider Faculty Support

The Board of Curators next month is scheduled to review recommendations for enhancing the research and scholarship activity of UM faculty. The recommendations include financial incentives, the creation of several endowed chairs to attract "world class" scholars to the university and better marketing and licensing of patents.

The recommendations are based on findings of the Special Committee on Facilitating Faculty Research Efforts, appointed last year by UM President C. Peter Magrath to identify ways to help UM faculty obtain external support for research and scholarship, including determining what impediments that frustrate faculty attempts to obtain federal and private research grants might be removed and what incentives might be employed to encourage faculty to seek funding. The committee also was asked to assess the effectiveness of decentralization of research grant activity functions.

The committee, chaired by UMKC Chancellor George A. Russell, was created to address long-range planning objectives that seek to increase both the quality and quantity of faculty research and to double-sponsored research funding.

The committee's report has been discussed by the Academic Affairs Council, the graduate deans group, the Intercampus Faculty Council and administrative staff groups.

The committee's recommendations:

- The president should issue a policy statement stressing the importance of external support for research and scholarly activity. Vice presidents, chancellors, deans and department chairs should be responsible for using the reward system of the university to promote research and scholarship and to encourage obtaining external funding. The statement should

emphasize the importance of research and scholarship in recruiting new faculty.

- The university should implement a system of personal monetary awards for faculty members who compete for and obtain external support for research and scholarship. Monetary incentives should also be made available to departments that have faculty members who are successful in obtaining external support for research and scholarship.
- To bring "world-class" scholars to the university, UM should create five or six endowed chairs for each campus over the next five years, to be funded at about \$1 million each by the university, the state and the private sector.
- A new Office of Patent and Technology Transfer should be created with a full-time administrator and staff to emphasize marketing and licensing. The office would work closely with representatives from the four business

innovation centers associated with the campuses. If it should be determined after five years that the office is not effective, the university should contract with an outside organization to handle disclosures and marketing patents.

- Responsibility for negotiations and awards should be at the campus level. The university should adopt a more flexible approach to patent ownership. A concerted effort should be made to improve support services for faculty who seek external support for research and scholarship.

Members of Russell's committee on research were Delbert E. Day, UMKC ceramic engineering professor; Jacob Leventhal, UMKC physics professor; Herbert Goldberg, UMKC microbiology professor; Robert L. Ross, UMKC general counsel; Don Blount, UMKC graduate dean; and Kent Shelton, UMKC assistant vice president for financial services.



TELECONFERENCE: Participants watch a video monitor during a video teleconference called the "National Aids Forum: Separating Fact from Fiction," held April 3 here. The videoconference allowed participants to interact with the moderators at the origination site in Massachusetts and included questions and answers from a local panel.

Applications Available For SA Offices

Applications are now being taken from prospective candidates for offices in the Student Association.

Students will be elected to the SA from each division in the college according to the student population in each school.

"We first determine the number of students in each division then calculate how many representatives that school gets on the SA," said J. Hulse-Mazur, SA administrative chair.

"Representation is based on population, like Congress," he said.

The dates for the SA election will be April 28 and 29.

Polling places are the same as for the recent Senate elections in SSB, EOB, Benton Hall, and the University Center.

A student election commissioner will be appointed by the SA administrative chair and then the two will hire pollworkers from the student body.

The Student Association is comprised of students elected from the general student body, and representatives from recognized student organizations.

CURRENT 1986-87

Applications are being accepted for positions on the **1986-87 Current** staff.

Interested students are invited to attend an organizational meeting on **Friday April 18, at 1 p.m. in the #1 Blue Metal Office Building.** The focus of the meeting will be to introduce students to the various opportunities the **Current** offers.

Students unable to attend the meeting should call **Steve Brawley at 553-5174** for further information about the newspaper.

The 1986-87 staff will begin its work over the summer.

Take time to build your portfolio and **Let the Current** put your major to work for you.

Earn college credit at home: an alternative to the campus setting.

Summer 1986

Earn college credit conveniently at home through telecourses offered by St. Louis Community College on KETC-TV Channel 9 and Cencom Cable, Channel 31. It's a great way to get started on a college degree, continue your education, update job skills or explore a special interest.

Earn three college credits for each of the following courses:

HST:512	HERITAGE: CIVILIZATION AND THE JEWS ("Heritage: Civilization and the Jews") Course Begins: May 31, 1986
PSY:203	CHILD PSYCHOLOGY ("The Growing Years") Course Begins: June 7, 1986
DP:100	INTRODUCTION TO DATA PROCESSING ("The New Literacy: An Introduction to Computers") Course Begins: June 10, 1986

86-398 1/86

For information on enrollment and a descriptive brochure, including mail registration forms, write or call:
Telecourse Office
Institute for Continuing Education
St. Louis Community College
5600 Oakland Ave.
St. Louis, MO 63110
(314) 644-9798

Ferguson BEAUTY College

116 S. Florissant Rd. Ferguson, MO 63135

SCIENTIFIC EDUCATIONAL SYSTEMS BY REDKEN

WE FEATURE **REDKEN** HAIR AND SKIN CARE PRODUCTS

BRING A FRIEND & SAVE

When you present one of the following coupons.

SHAMPOO AND SET or HAIRCUT ONE FOR \$3.50 or TWO FOR \$5.00 <small>Regularly \$4.50 each. Limit 1 coupon per visit. Not valid on Sat. Expires 5/2/86</small>	PERMANENT WAVE OR CURL \$5.00 OFF! OR BRING A FRIEND AND BOTH RECEIVE \$7.50 OFF! <small>OF THE REGULAR PRICE OF YOUR PERM OR CURL. INCLUDES CUT AND STYLE! Not valid on Sat. Expires 5/2/86. Limit 1 coupon per visit.</small>
NAIL TIPS \$12.50 FOR ONE, BRING A FRIEND AND GET TWO FOR \$22.50 <small>Save \$8.00. Limit 1 coupon per visit. Not valid on Sat. Expires 5/2/86</small>	HAIR RELAXER ONLY \$16.50! OR BRING A FRIEND AND GET TWO FOR \$28.00 <small>INCLUDES CUT, CONDITION AND STYLE. Not valid on Sat. Expires 5/2/86. Limit 1 coupon per visit.</small>

All work performed by students.

EARN EXTRA INCOME

Ferguson Beauty College is now offering a course in

MANICURING AND NAIL SCULPTURING

IN ONLY A FEW WEEKS YOU WILL GRADUATE

- Day & Evening Classes
- Job Placement Assistance

Send for our complimentary brochure.

Name _____
Address, Zip _____
Phone _____

call: 522-0798

Magrath

from page 1

"The President's Spouse: Volunteer or Volunteered? She wrote the book for the National Association of State Universities and Land-Grant Colleges with Joan E. Clodius.

Peter and Diane Magrath were married in 1978 and have a 10-year old daughter. She is currently working on a project entitled, "The Reunion of Sisters," involving both Finland and the United States, and is a consultant in Student Activities at Stephens College.

Her appearance at UMSL was the highlight of the 1986 Conference on Women's issues sponsored by the UMSL Women's Center.

The conference offered panel

sessions on the importance of women's networking as well as personal accounts from various women leaders.

Magrath said that it is important that women's instincts are being recognized.

"At last someone is giving women credit for their sensitive, personal intuition and listing high on the scale of power. Of course intuition alone can be a little shaky, but intuition coupled with experience, training and common sense is unbeatable," she said.

In summary she concluded that women supporting each other is the aspect of female leadership that has the greatest potential.

Following are the correct allocations by the Student Activities Budget Committee.

	1985-86 Allocation	1986-87 Request	1986-87 Allocation
Assoc. Black Collegians	\$12,150	\$18,000	\$13,500
Beta Alpha Psi	434	1,085	625
Chess Club	175	1,750	250
Chinese Student Assoc.	0	505	100
Current	19,000	24,140	19,000
Delta Sigma Pi	550	1,500	700
Disabled Student Union	1,700	2,400	1,800
Doctoral Student Organization	0	268	0
Evening College Council	6,165	11,040	5,000
Forensics	5,000	6,000	6,000
Gay/Lesbian Student Union	90	3,822	900
Greek Week	750	1,400	1,150
Horizons	11,000	12,520	11,000
International Student Union	2,500	5,925	3,000
Jewish Student Union	0	450	0
Kappa Delta Pi	200	595	250
KWMU Student Staff	9,500	16,100	0
Literary Magazine	1,128	5,100	900
Madrigal Ensemble	175	3,850	200
Music Educators Nat. Conf.	50	850	100
Panhellenic	500	1,375	600
Pierre LaCade Organization	0	2,100	0
Political Science Academy	800	850	800
Psi Chi	0	425	100
Psychology Organization	359	780	250
Rho Nu	175	460	0
School of Education	900	1,270	900
Student Budget Committee	6,000	6,000	6,000
Student Association	23,400	30,850	29,700
Student Investment Trust	100	700	150
National Education Assoc.	125	225	150
Student Optometric Assoc.	1,350	6,300	1,000
Volunteer Optometric Services	350	2,800	700
Symphonic Band	400	600	450
TV Productions	900	3,450	1,000
U. Center Advisory Board	9,400	12,100	10,600
University Players	13,477	30,000	11,715
University Program Board	63,745	89,360	71,300
University Singers	2,412	2,597	2,597
Total	\$195,700	\$309,550	\$202,487

Health

from page 1

There is optional blood testing available for a fee. The basic blood chemistry test is \$10 and covers 22 values which will detect problems such as diabetes, kidney problems, liver problems, gout, and thyroid problems. This test requires that you fast for 4 to 10 hours before the test. Fasting means you should not

Participation in UMSL's Health Fair is open to everyone 18 and over. There are other sites around the St. Louis area set up to screen children.

eat or drink anything except clear water, black coffee and clear tea. Continue to take any regular medications. Diabetics should follow their regular routine.

The basic blood chemistry tests plus coronary risk profile is available for \$15. This test includes all the above tests plus a coronary risk profile which determines specific cholesterol and triglyceride levels. If you choose this test, you must fast for 12 hours. If you are taking any form or anti-coagulant or blood thinner, you are not eligible to have the blood tests drawn because of the risk of bleeding. UMSL will not be doing anemia testing.

The first follow-up will take place at the Health Fair when you review your results with a registered nurse.

Home

from page 1

Salim is from a small country at the foot of Saudi Arabia, and is taking crash courses in English at the university. Salim and Holland were put together to aid Salim's English. Holland has a large family and said that Salim is her new addition to it.

In addition to having difficulties with the language, Salim is used to taking the bus and has found himself in the wrong area. "The first time was my fault," Holland said. "I wrote south instead of north on

Kingshighway." Salim caught the wrong bus another time, and the busdriver dropped him off as close to his home as possible.

Another reason Salim has trouble is the differences in our cultures. One evening Salim returned home late because his brother didn't get him to his bus stop. Holland said she was very worried and was about to call the police. Salim apologized later that evening he said, "Mom, after the police would have found me, what would they have done to me?" Holland said he calls her mom, because Mrs. Holland is too formal and Jo is disrespectful.

"I think it has been an enriching experience, learning about another person's culture," Holland said, "Through talking to them, which is colorful compared to the black and white of books."

from page 1

lower group need" to earn more money.

And while "lower class" men and women out of school for four years were making the same amount of money, females from the upper strata were earning less than males from the upper strata.

Dougherty thinks it's because wealthy females may not have the same access to family businesses as do upper-strata males, a factor he found to contribute greatly to earning power.

He also speculates affluent women probably don't have the same financial motives as females

...the highly touted MBA doesn't help upper-middle and upper-income students earn much more than they could without an MBA.

from the lower classes.

"Rich women can afford to take interesting jobs such as working in a museum," observes William Hokanson, director of communications for Harvard's business school.

There also may be a limited number of well-paying jobs, which often are grabbed by males from affluent backgrounds, maintains Charles Hickman of the American Assembly of Collegiate Schools of Business.

Additionally, affluent females have the option to leave the work force to rear children more readily than women of lesser means, Hickman says.

Dougherty's study, of course, deals with grads of three schools not nationally recognized as heavyweights in business education.

At least one observer thinks a MBA from a "credential" school will accelerate over a BA regardless of class," contends John Aisner, assistant director of communications at Harvard's business school.

Moreover, "where you go to grad school is becoming more important," he adds.

At the same time, students' grades don't seem to have anything to do with how much they earn after graduation. Dougherty found no relationship between academic performance and professional success.

It's Election Time! Student Association Elections

April 28th and 29th

Applications Available Now In Room 262 University Center. Due April 23rd.

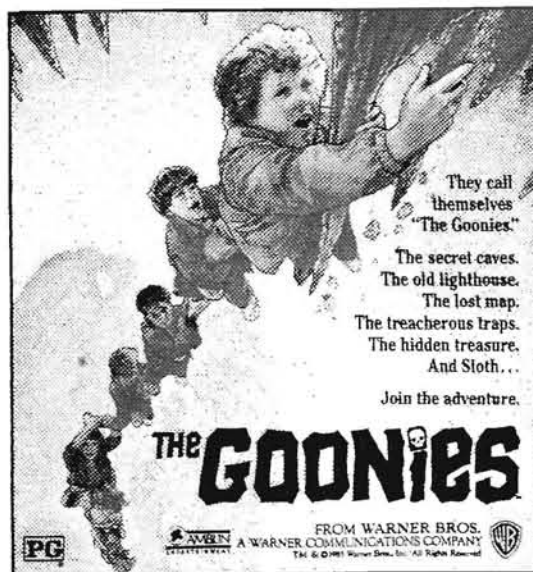
Election Help Needed

Election Commissioner
And Poll Workers

These Are Paid Positions.
Stop By 262 University Center
or
Call 553-5104 For Details.

UNIVERSITY PROGRAM BOARD

presents
Thursday & Friday
At the Movies!



April 10th
5:00 & 7:30pm
April 11th
7:30 & 10:00pm

"THE GOONIES is awesome
adventure!"
— Pat Collins,
CBS MORNING NEWS

\$1 w/UMSL Student ID
\$1.50 General Admission

Marillac Auditorium



VIDEO

Movie of the Week
Video in the Lookout
(Summit Lounge)
Once Upon a Time in the West
April 14th Thru 18th

Shows Daily
Mon. 10:00 a.m.
Tues. 9:00 a.m.
Wed. 12:00
Thurs. 2:00 p.m.
Fri. 1:00 p.m.

THE DEPT OF SPEECH COMMUNICATION
AND THE UNIVERSITY PLAYERS
PRESENT
SAM & BELLA SPEWACK'S

MY
THREE
ANGELS

APRIL 18, 19, 20, 8:00PM.
BENTON HALL THEATRE

GEN.ADM. \$7.00

STUDENTS \$3.00

UMSL STUDENTS

FREE

UNIVERSITY OF MISSOURI ST. LOUIS
6001 Natural Bridge Rd.
FOR MORE INFO, CALL 553-5703

BY SPECIAL ARRANGEMENT WITH DRAMATIST PLAY SERVICE INC

Installment Plan Reaching Ahead

Registration for the Fall 1986 semester might not be filled with the common anxieties and pressures of previous semesters for some students, thanks to the implementation of the new installment payment plan for student fees.

Students, heretofore under restrictions to pay their fees in full, now have the option of choosing one of the installment plans.

Students not available for the installment process are those with delinquent accounts, students whose enrollments are processed on the basis of financial aid, third party billings, scholarships, employee education assistance, students who enroll in five credit hours or less, and students who register after classes have started for the semester.

Students will be offered a choice of three installment

plans, a reaching step from the bygone days of paying all fees up front.

The students have cried for such installment plans over the years, always fruitless, though. Undoubtedly, such a plan could have retained some students under financial difficulties within the university system.

Bill Moody, director of fiscal operations, said the UM system has come to the realization that "the cost of a college education has reached the point where people should be able to spread their payments out if they want to."

It is unknown how the plan will affect the university financially, but even if the university doesn't "break even," it is a service to the students that can only help.

It is a service that the students have been waiting for.

Health Fair USA Coming To Campus

UMSL will be hosting Health Fair USA in the Mark Twain Building next week, in conjunction with the metropolitan Health Fair USA Week, April 14-19.

A national volunteer effort to promote the well being of our health, the Health Fair is an area-wide screening project designed to identify potential health problems.

The program provides free and sound advice in many different areas, including: blood pressure, obesity, diabetes, glaucoma, kidney and liver problems, gout and other abnormalities.

Through last year's participation, 18 percent of the individuals screened were detected to have some abnormality and advised to have it followed up by a physician.

The Health Fair is a sound idea to what can be hidden problems in the health and well being of persons involved in the UMSL community.

Anyone 18 years of age or older is invited to participate. It is sound medicine to anyone who hasn't had a recent check-up or who is concerned that they may be suffering from some type of abnormality.

The Health Fair, sponsored locally by General American Life Insurance, KMOX-TV and the St. Louis Bi-State Chapter American Red Cross, in conjunction with the National Health Screening Council for Volunteer Organizations, Inc., is being supported on campus by UMSL Student Health, the UMSL School of Nursing, the UMSL School of Optometry, and the UMSL Physical Education Department.

Everyone knows the benefits of good health and the affects of poor health. A free screening definitely is worth the time and effort of the sponsoring organizations.

It is worth the time and effort, too, of the UMSL community.

Disabled Week Not Just A Few Days

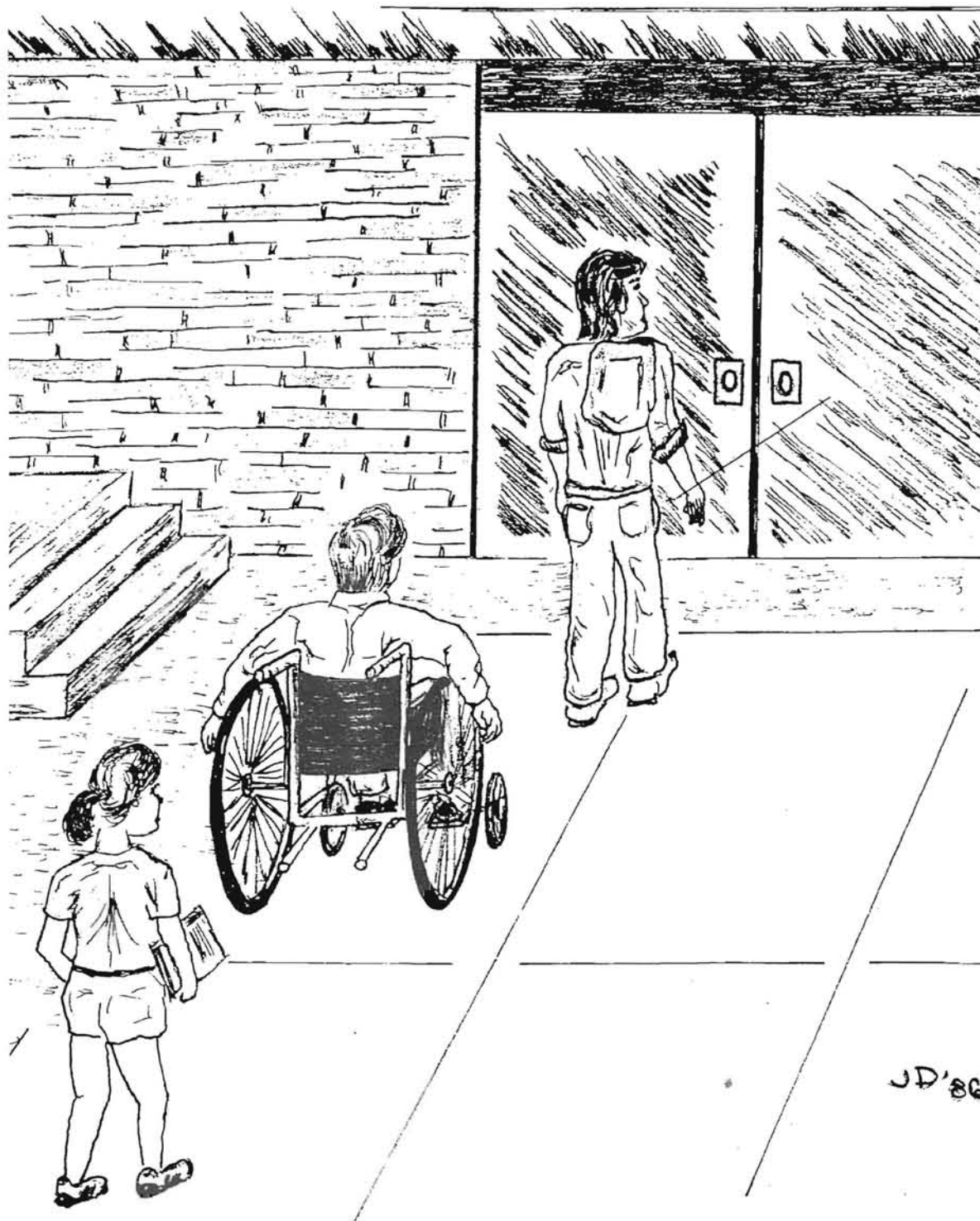
UMSL celebrated the sixth annual Disabled Awareness Week this week, with events ranging from music to movies to sports.

There were cross campus wheel chair races, wheel chair tennis, therapeutic horseback riding, and awards celebrations.

Let's hope the UMSL community can remember,

however, that being disabled can be a lifelong struggle. Let's hope the UMSL community can continue to acknowledge the disabled throughout the year, rather than April 7-11 alone.

The Awareness Week, sponsored by the Disabled Student Union, the Division of Student Affairs, the University Program Board and Pepsi Cola, can be viewed more as a tribute than as an awareness week.



LETTERS TO THE EDITOR

SA Travel Defended By Bercker

Dear Editor:

The Meyer-Lacostello campaign has committed a serious tactical and moral blunder. They distributed flyers last week accusing the present student administration of taking trips to Chicago, New York, Washington D.C. and ... Nicaragua. We, the students, are naturally supposed to infer from that flyer that we paid for those trips. As it turns out, we did in fact pay for three of those trips where Greg and Hilary were supposed to represent us and our interests, and whether or not it was really necessary for them to go there to do so is supposed to be the issue. Furthermore, the question is supposed to be whether or not they spent too much time on national issues to the exclusion of other more prosaic concerns at home. So much for the facts.

It is, however, a lie that the present student administration went to Nicaragua. It is, however, true that Hilary Shelton, on his own time, with his own resources, and with no student money, went to Nicaragua. He was not down there as a representative of UMSL. To suggest that because Shelton is a member of the student administration, and since he personally went to Nicaragua is sheer sophistry. It is at best a category mistake. If you're not convinced, try this inference: Hilary Shelton is a member of student administration, student administration paid for his trip to Nicaragua. This is precisely the kind of fallacious reasoning that Meyers and Lacostello invite you to with their flyers. As such, it is manipulative and fundamentally dishonest. It should not be tolerated.

And if you think that it is merely their wording that is at fault, and that they meant no harm, think again. In my conversation with Meyers and Lacostello, I pointed out to them that their flyer was at fault for suggesting that student administration went to Nicaragua, and thus inviting the suggestion that stu-

dent administration had paid for it. And I told them that in fact we did not pay for it. Need I say more? But there is more. Ken Meyers admitted toying with the idea of leaving out the trip to Nicaragua because of the implication, but decided to go ahead anyway. This proves, beyond a shadow of a doubt, that they knew very well what they were doing. It was not an unfortunate wording. It was precisely calculated to lead us to believe that we had paid for it even though they knew that we had not. They had every intention of misleading the students. But they hadn't figured on getting caught at it.

Let me repeat their fallacious reasoning. They claim the following: 1) Hilary is a member of S.A., 2) Hilary went to Nicaragua, so 3) S.A. went to Nicaragua. But we have the obvious counter-example: 1) Hilary is a member of S.A., 2) Hilary paid for the trip to Nicaragua, so 3) S.A. paid for the trip to Nicaragua.

And my claim is not merely that they are guilty of fallacious reasoning, but rather that they willfully did so. As such, they are guilty of malicious reasoning.

Pascal Bercker

Announces His Bid For SA Presidency

Dear Editor

On April 28 and 29 all students will have the opportunity to vote for candidates of our student government. It is vital that students participate in electing the candidates they feel will best serve their interests. Your choice of leadership will have an impact on rising activity fees, how your student activity fees are spent and what focus your student government will take.

At this time I am announcing my candidacy for Student Association president. Having been in student government for two years I have the ability, experience and enthusiasm to do a good job for UM-St. Louis students. Currently a member of the University Senate I serve on two senate committees, Student Aid and Admissions and Fiscal

Affairs and Long-Range Planning.

As a member of the Student Association Assembly I was elected chairman of the SA Grievance Committee. I'm also a member of the SA Executive Committee and the Student Association Budget Committee.

Student government can play a strong and important role for the UM-St. Louis students, campus and community. It is my desire to make this possibility a reality. While talking with other students on campus they have expressed many concerns that need to be dealt with. These concerns range from parking and bookstore problems to the restructuring of the Student Association Constitution. The challenge of these issues as well as others will be met.

Despite my disapproval in a Student Association Budget Committee meeting, the committee passed an activity fee increase for all students and despite my disapproval of a \$6,600 budget increase for Student Association it passed the committee. These are the things that you, the students, have a voice in deciding.

Finally, I would like to thank UM-St. Louis students for their time and interest in my candidacy. Once again I want to encourage students to vote and lets put UM-St. Louis first.

Sincerely
Ken Meyer

Chairperson Regrets Layout

Dear Editor:

I regret that the layout for pages of issue 542 of the Current accented largely unread "letters" while a woman who has devoted her life to education and development of students gets an award announcement tucked away between a bible thumper and a bridal boutique. Is it ineptness or misplaced values?

Sincerely
Charles R. Granger
Chairperson
Department of Biology

CURRENT

University of Missouri-St. Louis
1 Blue Metal Office Building
8001 Natural Bridge Road
St. Louis, Mo. 63121
Phone: (314) 553-5174

The Current is published weekly on Thursdays. Advertising rates are available upon request by contacting the Current Business Office at (314) 553-5175. Space reservations for advertisements must be received by noon Monday prior to the date of publication.

The Current, financed in part by student activities fees, is not an official publication of the University of Missouri. The university is not responsible for the Current's contents and policies.

Editorials expressed in the paper reflect the opinion of the editorial staff. Articles labeled "commentary" or "column" are the opinion of the individual writer.

Copyright by the Current, 1986

All materials contained within this issue are the property of the Current and can not be reproduced or reprinted without the expressed written consent of the Current and its staff.

Daniel A. Kimack
editor-in-chief

Steven Brawley
managing editor

Yates W. Sanders
business affairs/ad sales director

Mike Luczak
assoc. ad sales director

Marjorie Bauer
features/arts editor

Linda Wendling
assist. features/arts editor

Robin House
copy editor

Craig Martin
news editor

Dan Noss
sports editor

Diane Schlueter
asst. sports editor

Jan Braton
around UMSL editor
classified coordinator

Cedric R. Anderson
photography director

John Dereak
graphic artist

Brent Jones
office manager

Jon Young
circulation manager

Michele Smith
production assistant

John Conway
production assistant

Steve Luczak
production assistant

Terri Seymour
production assistant

Peggy Harris
production assistant

Marci Green
typesetter

reporters
Laurie Aldy
Mark Bardgett
Loren Richard Klahs
Eileen Pacino
Nick Pacino
Marilyn Probe
Jimmy Schwartz
Chris Stolle
Monica Lauer
Jacqui Lauer
Dave Brown

LETTERS POLICY

The Current welcomes all letters to the editor. The writer's student number and phone number must be included. Non-students also must sign their letters, but only need to add their phone number. Letters should be not more than two typed pages in length.

No unsigned letters will be published. Names for published letters will be withheld upon request, but letters with which the writer's name is published will receive first preference.

Responsibility for letters to the editor belongs to the individual writer. The Current is not responsible for controversial material in the letters, but maintains the right to refuse publication of letters judged by the editorial staff to be in poor taste. No letters with libelous material will be published. Letters may be edited for space limitations.

Letters may be dropped off at the Current offices, 1 Blue Metal Office Building, or the University Center Information Desk. They may also be mailed to Letters to the Editor, Current, 1 Blue Metal Office Building, 8001 Natural Bridge Road, St. Louis, Mo. 63121.



Rush

from page 1

along with them.

According to Rush, "The campaign was jubilant." He said that the pictures Americans saw of the Filipino people laughing, dancing, singing and praying during the campaign reflected the changed atmosphere.

Rush had asked a dean at the University of the Philippines what he thought of the new attitude. He answered, "We have to do this. This is absolutely the last chance for peaceful change in the Philippines."

People told Rush they were participating in the election because, "We are praying for a miracle."

When Marcos had the legislature declare him the winner, the general feeling of despair did not return. Instead, Rush said, "The momentum of the election campaign was sustained. It was almost as if people couldn't — wouldn't — believe it. It was, as though it wasn't really over."

The miracle the Filipino people hoped for finally occurred in the form of a military coup, when the Marcos' minister of defense, along with General Ramos, declared they no longer accepted the legitimacy of the Marcos regime. Rush said that what the Filipino people regarded as the real "miracle of miracles" then happened.

"The spontaneous participation of hundreds of thousands — probably millions — of Filipinos, going to the defense and protection of these men, who only a few days before were part of the Marcos government," Rush said.

Rush returned to the Philippines after the coup had begun on the last flight out of Sidney, Australia to Manila. A rumor circulated on the plane that Marcos had left the Philippines and the coup was over.

"The stewardesses and stewards could barely contain their euphoria as they passed this message along," Rush recalled. These people were state employees because the government owned the airline, which made their reaction ironic. However, they discovered when they landed that Marcos was still in the palace. The coup ended the next day.

When he returned, Rush tried to visit Channel 4, which was once notorious for its complete loyalty to Marcos. It had been captured by troops loyal to the coup that day. He couldn't get close at first because the streets were crowded with people making bonfires, sleeping, and praying, protecting the station from government forces. It was the only communication source for the rebellion.

Rush finally got to the station and witnessed the upheaval, as people who had never been on television before, tried to direct the rebellion.

Rush described the scene: "People were saying, 'We've heard that troops are headed to this particular place, why don't some people go there' and 'Folks on this street need food, please take some food there.'"

Rush attended the inauguration of Corazon Aquino the next day, and Marcos left that evening. Rush noted, "It was a new world in the Philippines; a new country with a new government completely unprepared to take upon itself the challenge of governing a country."

Rush gave an analysis of the current situation by Father Delatory, who was a political detainee during Marcos' rule for 10 years. He compared the government to a premature baby.

"From the Marxist point of view the baby came sooner than we expected, it wasn't fully developed.

On the other hand, it cost us a lot less than we thought it might. Who are its parents? We're not sure. Its right arm is much bigger than its left arm. There is another problem; it has a dotting uncle."

Rush described the coalition of rebellion forces which are struggling for power in the new regime as, the far left, the "soft left" which believes in the Marxist analyses of the Philippines but doesn't want to change the political structure to communism, the Center group, the democratic right which includes former landowners and the far right. Although her husband was a member of the democratic right, Cory Aquino is in the Center. Her cabinet includes people from the soft left to the far right, but no militant communists.

According to Rush, what happens next depends next in the Philippines depends almost entirely upon Aquino and her cabinet, and she is the pivot. "She is very interesting because she has very few well thought out, analytically political ideas," Rush noted. He said that she is a humanitarian who believes in justice and the democratic process to create a better society. She is anti-communist because of her religion and the social class she belongs to, which believes in the right to own property.

However, Rush said that she is a reformist because she does believe in a more equal distribution of wealth.

About her attitude toward the United States, Rush said, "Most people close to Mrs. Aquino think she is more negative about the United States than she might show." During the beginning of her campaign in the fall she said she would remove the American military bases in the Philippines, and that her country must be more autonomous.

But Rush noted, "She comes right

out and admits that the happiest time in her life was when she lived in Boston for three years."

Rush believes the issues that must be dealt with include the nature of the government, economic policy, and foreign policy. The general consensus is that the government will be a presidential constitutional system based on the Constitution of 1935. The economic debate focuses on a balance between free enterprise and a redistribution of wealth.

As for the foreign policy, Rush noted that "it is defined as strictly based upon the relationship between the Philippines and the United States."

The Filipinos regarded the Marcos regime as "The United States-Marcos" dictatorship, and according to Rush, "there is an enormous wariness among the Filipinos about the role of the United States, and the bases are a manifestation of this."

Rush said the bases will either be removed in 1991 when the contract comes up for review or the government will try to get a better deal monetarily from the United States.

Rush concluded by noting the elements of disunity and unity in the Philippines. Forces which threaten the government's strength include armed Marxists who still are fighting in Philippine outskirts, the military which might try to build up strength to combat the Communists, the economic situation and "politics as usual."

However, cohesive elements include social forces such as family ties, the tradition of civilian supremacy, the Church, a deep belief in democracy, the realization that there is no alternative to this government, and Cory Aquino herself.

"None of what happened could have happened without her," Rush said.

NEWSBRIEFS

Student Affairs Recipients

Each year, the Division of Student Affairs recognizes those students who have made significant contributions to the University in leadership capacities, volunteer work and other performances in campus student activities. These individuals have done much to promote involvement in student life on campus.

The recipients of the 1986 Student Affairs Award are:

Greg Barnes, Joan E. Beckwith, Tom Bommarito, Jr., Steven Brawley, Geoffrey Burton, Jean Cavender, Mary Kathy Grossheim, John R. Hancock, Cheryl M. Hodak, J. Hulsey-Mazur, Richard Klosterman, Jr., Susan A. Kramer, Pamela Lichtenstein, Kenneth A. Meyer, Kyle Muldrow, Mary Kay Murphy, Mary S. O'Mara, H. Jeffrey Pilgrim, Lisa Quigley, Thomas C. Sachs, Michele M. Smith, Diane Stecher, Mark V. Washington, Mary T. Weiler, Venita Weintraut, Janet Wieclaw, and Yazdani Zia.

Student Life Nominees

Each year, the Division of Student Affairs recognizes individuals who have made significant contributions to the quality of student life at UMSL. These individuals are members of the faculty or the staff. This year four have been selected as finalists from the many who were nominated.

The four finalists are: John J. Boswell, Psychology; Harry J. Gaffney, Evening College; Ivan D. Kaylor, Instructional Technology; and Idel M. McCullough, Financial Aid. These four will be recognized at the annual Student Affairs Awards Ceremony scheduled for Wednesday, April 23, 1986 at 2:30 p.m. in room 222, J.C. Penney. A reception will follow in 229 J.C. Penney. The recipient of this year's Student Life Award will be announced at the ceremony.

Poetry Writing Offered

A five-week course designed to help writers strengthen their poetry writing skills will be offered by UMSL's Continuing Education-Extension beginning in April.

"Poetry Writing: Getting to Meaning" will be held Mondays beginning April 21 at 6:30 to 8:30 p.m. Topics include generating poetry from expressive or structured exercises, revision, use of metaphor and imagery and publishing tips.

Alice G. Brand, assistant professor of English and director of continuing education writing programs at UMSL, will lead the course.

The class will be held in the J.C. Penney Building. The fee for the course is \$55.

For more information, call Clark Hickman at 553-5961.

Women's Scholarship Set

The Lafayette Area Branch of the American Association of University Women will be offering a scholarship to a mature woman with a 3.0 GPA for the academic year of 1986-87.

Applications are available in the financial aid office, room 209 Woods Hall.

Education Colloquium Set

Neil Malloy, Missouri State Representative from District 81, will speak on "Legislative Developments and the State of Education in Missouri," on Fri. April 11 at 11 a.m. at UMSL.

The colloquium, presented by the UMSL department of Behavioral Studies of the School of Education, will be held in the Northwest Room on the South Campus. Call 553-5782 for information.

Big Mountain Speakers

Representatives of the traditional people of the Hopi and Navajo American Indian tribes will present a lecture and presentation at 2 p.m. Monday, April 21 at UMSL in 200 Lucas.

The elders, mostly speaking through translators, will be speaking on public law 93-531, the Navajo and Hopi Relocation Act. The act seeks to relocate 14,000 people from the Big Mountain area in Arizona so the area can be used for mining.

For more information call Dr. Van Reidhead at 553-6024.

Graduate Prize Awarded

UMSL graduate Dixie Lee Adamson has been awarded a \$500 honorable mention prize for graduate study by the Honor Society of Phi Kappa Phi.

Adamson was one of 30 selected for honorable mention from a group of 171 of the nation's outstanding 1986 college graduates. She plans to study clinical psychology at UMSL.

Phi Kappa Phi is a national scholastic honor society with headquarters on the campus of Louisiana State University and chapters at 240 colleges and universities throughout the nation. Founded in 1897 to recognize academic excellence in all disciplines, Phi Kappa Phi established its fellowship program in 1932 and has honored over 800 scholars with awards.

PREGNANT?

FREE TESTING & COUNSELING: TUES. THRU SAT.

- Abortion Services • Tubal Sterilization
- Community Education Programs
- Licensed • Non-profit • Board certified Doctors
- Two locations

reproductive health services 367-0300

PROJECT PHILIP

The Bible Solves all your problems when all things and friends fail you
We offer a free Bible and Correspondence course to all students. Free postage.

Write to: Project Philip — College Campus
P.O. Box 1-1301, Clayton P.O.
St. Louis, MO 63105

The Real Life Adventures Of A Make-Believe Cop.

OFF BEAT

TOUCHSTONE FILMS presents in association with SILVER SCREEN PARTNERS II "OFF BEAT" An UFLAND/ROTH/LADD Production A MICHAEL DINNER Film

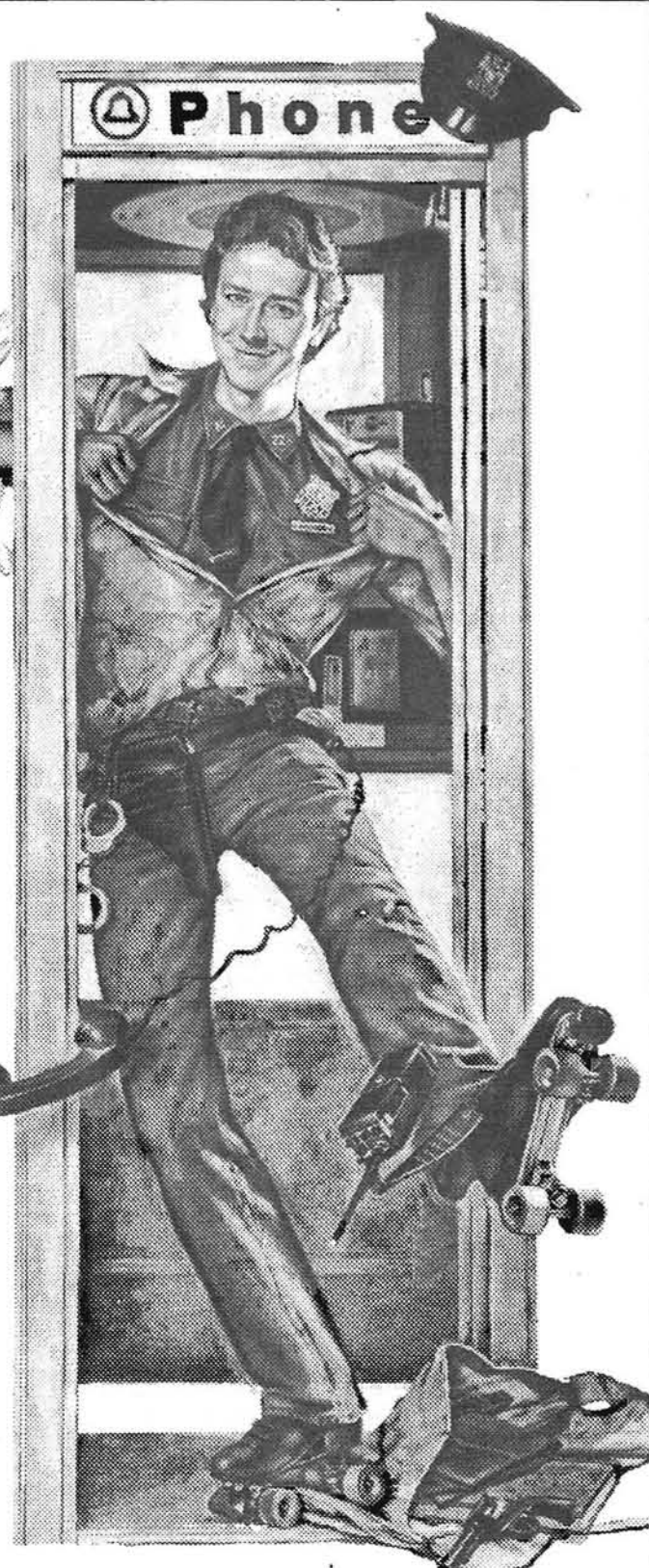
Starring JUDGE REINHOLD • MEG TILLY • CLEAVANT DERRICKS • JACQUES DUMBOISE and HARVEY KEITEL Music Composed by JAMES HORNOR

PG PARENTAL GUIDANCE SUGGESTED
SOME MATERIAL MAY NOT BE SUITABLE FOR CHILDREN

Edited by DEDE ALLEN Produced by JOE ROTH and HARRY UFLAND Screenplay by MARK MEDOFF Directed by MICHAEL DINNER

LENSIS AND PARAVUE "CAMERA BY PANAVISION" COLOR BY TECHNICOLOR PRINTS BY DE LUXE Distributed by SUMMA VISTA DISTRIBUTION CO. INC.

Opens Friday at a Theatre near you.



Bridal Gowns • Bridesmaids
Mothers • Flower Girls
Proms • Complete Line Of Tuxedos

Bridal Boutique

11730 W. Florissant
(One Half Mile North of I-70)

921-3370

Largest Selection In The Area



MCLAUGHLIN real estate, Inc.

3855 Lucas and Hunt Rd. Suite 218 St. Louis, Mo. 63121

HOUSE OF THE WEEK



7516 Stanwood
St. Louis, MO

WE SPECIALIZE IN THE UMSL AREA
For More Information: 389-9998

11

Friday

● Last day any student may drop a course or withdraw from school.

● Men's Tennis vs. Northeast Missouri State at noon at the Mark Twain Complex. Admission is free. For more information, call 553-5121.

● Women's Tennis vs. University of Tennessee—Martin at 3 p.m. at the Mark Twain Complex.

● Men's Baseball vs. Wright State at 1 p.m. This double-header will be played in the Mark Twain Complex.

12

Saturday

● "Common Medical Emergencies and What to Do" will be the topic of the next "Saturday Morning Health Talk" from 10 to 11 a.m. in Room

218 Mark Twain Building. Admission is free. For more information, call 553-5220. Sponsored by the UMSL Wellness Network.

greek week

● The UMSL Greek Fraternities will sponsor "Greek Week" from Sunday, April 13, to Saturday, April 19. The following is a schedule of "Greek Week" events to be held in and around the campus area.

April 13: Greek Sing and Talent Show from 6 to 10 p.m. in the J.C. Penney Auditorium.

April 14: Canoe Race at noon on Bugg Lake.

April 15: Parlor Games—Ping Pong at 1 p.m. at the Sigma Tau Gamma House; Pool at 1 p.m. at Cue and Cushion, 2425 Woodson Road; and Foosball and Darts at 7 p.m. at the Sigma Tau Gamma House.

April 16: Co-ed Games at 1 p.m. in the Mark Twain Field.

April 17: Trivia Contest at 1 p.m. in the Summit Lounge.

April 18: Greek God and Goddess at 1 p.m. in the Mark Twain Building and a Swim Contest at 2 p.m. in the Mark Twain Pool.

April 19: Greek Games at 9 a.m. in the Mark Twain Field and the Greek Week Banquet at 8 p.m. at the Imperial House, 6324 West Florissant.

13

Sunday

● The UMSL Newman House will sponsor a "Day of Prayer and Solitude" at the bluffs of Godfrey, Illinois, overlooking the Mississippi river. The group will meet at the Newman House, 8200 Natural Bridge Rd., at 9:15 a.m. and return around 6 p.m. For more information, call 385-3455.

● This week's "Creative Aging" program will feature talks on "Blacks In Higher Education: The 80's and Beyond" and "The Fifth Annual National Consumer Week—April 20-26." The program airs every Sunday from 7 to 8 p.m. on KWMU (FM 90.7).

In "Blacks in Higher Education," the Creative Aging staff will pre-view a one-day conference to be held April 23 for national

and local educators. They will discuss the problems and possible solutions of the black crisis in higher education. Special guests for this segment will be Janice Vails and Carolyn Emerson, both of the UMSL Special Services Program, and Bridgette Jenkins, counseling psychologist for the UMSL Counseling Service.

In "National Consumer Week," Melodie Garner, trade practice consultant for the Better Business Bureau, will discuss how consumers can protect themselves from fraud and trickery.

● Men's Baseball vs. Northeastern Illinois at 1 p.m. This double-header will be played at the Mark Twain Complex.

● The UMSL Student National Education Association will sponsor a "Meet the Principal Night" at 7 p.m. on the South campus. This program is designed to acquaint prospective teachers with the teaching profession. Guests will be Frank Fc., principal of Kirby Junior

High School, and Sam Scoringino, assistant superintendent of the Parkway School District. They will discuss what school districts look for when hiring teachers and how districts choose curriculum. There will also be a question and answer session during the evening.

15

Tuesday

● "The Future of Sino-Japanese Relations" will be the topic of the next International Seminar, sponsored by the UMSL Center for International Studies, the political science department and the Missouri China Council. The seminar will start at 2 p.m. in the McDonnell Conference Room, 331 SSB. Allen S. Whiting, director of the Center for East Asian Studies at the University of Arizona, will be the guest speaker. Students are welcome and refreshments will be served.

● The UMSL University Women will hold their annual "Spring Book Sale" Tuesday, April 15, through Thursday, April 17, from 8 a.m. to 8 p.m. in the Library Annex, located west of Thomas Jefferson Library and north of Bugg Lake.

Popular fiction, special interest and scholarly publications, records, and magazines will be sold at prices ranging from 10 cents to one dollar. Persons who want to donate items for the book sale may call 553-5442 to arrange to have them picked up.

16

Wednesday

● The next in a series of UMSL Women's Studies Seminars will be "Heroes of the Afro-American Literary Totem" from noon to 1 p.m. in Room 318 Lucas Hall. Eugene Redmond, visiting professor of English at UMSL, will be the featured speaker. For more information, call 553-5581.

observation in UMSL's observatory. The registration fee is \$50. For more information, call 553-5961.

● Men's Baseball vs. St. Louis University at 3 p.m. at the Mark Twain Complex. Also, the Men's Tennis and Women's Tennis teams will go against Southeast Missouri State, both at 3 p.m., at the Mark Twain Complex.

● The UMSL Women's Center will sponsor an "Auto Maintenance Workshop" from noon to 1 p.m. in Room 107A Benton Hall. Participants will learn how to extend their life of their car. Cathy Burack, director of the Women's Center, will lead this crash course in basic auto maintenance.

● The UMSL Continuing Education-Extension will offer a course on "Observing the Heavens" on Wednesdays, April 16 through May 14, from 7 to 10 p.m. in the J.C. Penney Building. Topics for this introductory course will include an illustrated survey of the planets, moons, stars, nebulae, constellations and galaxies. Students will also learn tips for amateur stargazing. Weather permitting, sessions will include direct

Free health screenings will be offered at a "Your Health! Health Fair" today from 9 a.m. to 4 p.m. in the Mark Twain Gymnasium. For all people eighteen and older, there will be screenings of blood pressure, visual acuity, glaucoma, height and weight, and body fat percentage, plus general health information and referral services. There will also be an optional blood chemistry test for a fee of \$10 or \$15 which will require fasting. For more information on the blood chemistry test, or any other questions, call 553-5671. Sponsored by the UMSL Student Health Center, the School of Nursing, the School of Optometry and the physical education department.

workshop

● The UMSL School of Optometry will sponsor its fifth annual "Optometric Workshop" for college students, high school juniors and seniors, and high school and college guidance counselors and advisors from 9 a.m. to 5 p.m., April 11, on the South campus.

The workshop is designed to provide participants with information on optometric career opportunities. Included in the workshop will be discussions on admission requirements, the Optometry College Admissions Test, the

four-year optometric curriculum and career options.

Those attending will have the opportunity to participate in hands-on experiences designed to provide an awareness of what it is like to attend optometry school. They will participate in optometric laboratory exercises, clinical testing and optometric patient care.

Admission to the workshop is free. For more information, or to register, call the UMSL School of Optometry Office or Student Affairs at 553-6263.

17

Thursday

● "The Clock Tower: A Metaphor Through Evocative Anthropology" will be the subject of the next in a series of Modern Foreign Languages Seminars beginning at 1:15 p.m. in Room 110 Clark Hall. Guest speaker will be Hernan Torres, visiting assistant professor of anthropology at UMSL.

● A "Nature Photography Workshop" will be offered by the UMSL Continuing Education-Extension on Thursdays, April 17, 24, May 1 and 15, from 7 to 9:30 p.m. in the J.C. Penney Building. Also, the class will go on a field trip on Saturday, May 3, from 10 a.m. to 3:30 p.m. Topics for this "how-to" course include close-up photography, photographic equipment, composition, in-field demonstrations and hunting with a 35 mm camera. The registration fee is \$45. For more information, call 553-5961.

● The University Program Board will present a "Classic Western Double Feature" in their "At the Movies" feature this Thursday and Friday at 6:30 p.m. in the Marillac Auditorium on the South campus. Films will include "High Noon" and "Rio Grande." Admission is \$1 for students with an UMSL ID and \$1.50 for general admission.

● The UMSL Center for International Studies will sponsor a talk on "The Sociological Implications of Victorian England" in their next International Seminar. The talk will begin at 2 p.m. in the McDonnell Conference Room, 331 SSB. William J. Fishman, tutor in Labour Studies at Queen Mary College at the University of London, will be the featured speaker. Students are welcome and refreshments will be served.

calendar requirements

● Material for "around UMSL" should be submitted in writing no later than 3 p.m. Thursday of the week before publication to Jan Braton, around UMSL editor, Current, 1 Blue Metal Office Building, 8001 Natural Bridge Road, St. Louis, Mo. 63121. Phone items cannot be accepted. Material may be edited or excluded to satisfy space or content requirements.



classifieds

Help Wanted

From \$50 to \$500 weekly working part time at home. No experience necessary. Send self-addressed Stamped Envelope to: "Student Income", P.O. Box 1233, Ballwin, MO 63022.

Come grow with us! Rapidly expanding company seeks motivated, enthusiastic and personal people for full/part time positions in telemarketing. Guaranteed salary plus bonuses. Call 344-9000.

The Old Spaghetti Factory is looking for personable, neat, and energetic people to fill positions as bartenders, cocktail waitresses, food waiters and waitresses, and kitchen personnel. Experience not required. Applicants need apply Monday through Friday, 12:00 to 3:00 p.m. Call 621-0276.

Grey Eagle Distributors, Inc. St. Louis County's Anheuser-Busch Wholesaler is now taking applications for 1986-87 Campus Representative. Please send resumes or letters of interest to: Grey Eagle Distributors, Inc. 2340 Millpark Drive, Maryland Heights, MO 63043. Attn: Jeff Clinton.

Part-time position available. Pool and spa sales (retail store). Experience preferred not required. Call 569-1661

Tired of flipping burgers or being a couch potato in the summer? Missouri Citizen Labor Coalition's now hiring grass-roots political outreach staffers for summer. \$180-\$220. EOE Training. Fun. 721-0140.

SWAP

For information concerning the coded positions listed by the Student Work Assignment Program, call 553-5317.

Office Manager to work 9 a.m. to 6 p.m. 3 days/week. Must type 40 wpm, shorthand helpful. Good office skills. Pleasant phone voice. Salary is \$200-\$225/week. Clayton, Code 02-4186. SWAP, room 346 Woods Hall.

Part time counter person needed in the Ferguson area to operate adding machine, work with the public and some computer work. Monday 9 a.m. to 5:45 p.m. and Saturday 9 a.m.-2:30 p.m. Salary is \$3.35/hr. Code 02-4188. Contact SWAP, room 346 Woods Hall.

Data Entry part time, 2-3 days/week. Need experience with IBM P/C and Data Processing. Salary is \$5.50/hr. Florissant. Code 02-4189. SWAP, room 346 Woods Hall.

Recruiting Asslt. Need good communication skills and be able to work well under pressure. 20 hr./week. Salary is \$7/hr. Creve Coeur, Code 02-4192. SWAP, room 346 Woods Hall.

Clerk part time to work 2 to 3 hrs/day, 5 days/week to help answer phones, write letters, typing 40 wpm, but accuracy rather than speed. Downtown. Code 02-4193. SWAP, room 346 Woods Hall.

Clerk typist to type 40 wpm. Medical Terminology preferred. Salary is \$5.06/hr. Part time work. Downtown. SWAP, room 346 Woods Hall.

For Sale

1976 Pinto 4-speed, 69,000 miles, AM-FM stereo. Runs very well. \$450. 1980 Yamaha SR250G Street bike, runs and looks sharp. \$495. 839-0170. Mark.

1984 Olds Cutless Special Addition, V-6, Power windows, doors, antenna, AM and FM, wire wheel covers, balance of warantee, \$7,495. 843-0463.

1977, charcoal grey, Trans Am. 400 c.i.d., 4 barrel, automatic, Rebuilt engine, transmission, front-end, carburetor, exhaust. Has power windows, shift kit, stereo cassette, traction bars. Very nice. \$2500. Call Andy at 394-2833 after 1:30 p.m.

75 Plymouth Duster, Runs well. Dependable. 89,xxx miles. \$650. Owner Financing Available. Call Coach Larson at 553-5641.

Cable T.V. 50 channels only \$10.40/month! If you live in the following zip codes, 63121, 63133, 63134 63135 or 63136, you may be eligible for this special offer. Call Jeff at 524-6880 or 993-6156 (after 5) to see if you qualify.

1979 Suzuki 550E New tires. New battery. Disc brakes. Needs tune-up. \$600. Helmet and repair manual included. Call Dave at 838-1742.

1980 Pontiac Sunbird. AM/FM automatic air P/S new tires. Hatchback \$1500. Call 947-4005.

Bicycle Women's 26 in. Schwinn 10-speed. Lights, best offer. 261-7153 eves. Light weight.

Miscellaneous

Need a place to stay for the summer? Two bedroom apts. and sleeping rooms available from \$100/mo. Within walking distance to UMSL. Call Coach Larson at 553-5641.

Attention! Typing done in my home, evenings. Reasonable rates. \$1/page. Call after 6 p.m. 381-4728 (Kathy), UMSL area. Natural Bridge at Goodfellow.

Female roommate needed for summer months, May, June, July and August. 5 min. from campus at Lucas and Hunt Village. Furnished. Rent approx. \$160/month including utilities. Call 383-6686 after 6 p.m.

House to share 3 bedrm, 1 and 1/2 baths. Professional White Female to share with 2 mature Female Graduate students preferred. \$225-\$250/month plus 1/3 of utilities. Call after 4 p.m. 653-1199.

Music lessons. Basics of reading music made simple. For amateur musicians who perform, but do not read music. Teacher is senior music major. All materials needed provided. Fees reasonable. Discount for students and senior citizens. Private and group instructions. 524-5903.

Typing or Wordprocessing service done at a very reasonable rate. Give your term papers a "polished" look. Call Debbie at 385-1051 or 389-3564 (after 3:00 and weekends) or stop in and see me at 8451 Natural Bridge. Fast turnaround promised!

Year end beach break \$99 for a week at Ft. Walton Beach. Get 1 Padre Island and Daytona Beach! Hurry, call Sun-chase Tours for more information toll free 1-800-321-5911 TODAY! When that last test is over... Break for the beach with Sunchase!

Free health screening for height and weight, blood pressure, visual acuity and glaucoma April 16 9 a.m. to 4 p.m. in Mark Twain Gym. Call 5671 for information.

A PROFESSIONAL RESUME \$6 & UP. Expert Writing, Typing & Printing. Also letters, reports, etc. DOWNTOWN---214-7254; FLORISSANT---921-5003; CREVE COEUR---997-2239; CLAYTON---726-0999; DES PERES---821-7281

"YCCOM" You Can Count On Me Home Development Center for children through 5 years of age. Three miles north of campus. Available day hours. Call me and let's talk about your child and my ideas. Shari 521-6820.

Typing. Word processing. \$2/page. Two locations for your convenience. Steward's-739-5344 in Bridgeton and Write On Time-279-1349 for the St. Charles area. Quick turnaround!

Attention Students and Instructors: Expert typing, proofreading and editing services are available. Let us polish your paper to perfection, whether for publication or for class assignment. Rates: Typing, \$1.50-\$5.00/page; proofreading, \$1.00-\$3.50/page; editing, \$7.00/hr. Rates vary according to content and complexity of material. Call 429-4364 for appointment and exact price quotation.

Year end beach break \$99 for a week at Ft. Walton Beach. Get 1 Padre Island and Daytona Beach! Hurry, call Sun-chase Tours for more information toll free 1-800-321-5911 TODAY! When that last test is over... Break for the beach with Sunchase!

Free health screening for height and weight, blood pressure, visual acuity and glaucoma April 16 9 a.m. to 4 p.m. in Mark Twain Gym. Call 5671 for information.

A PROFESSIONAL RESUME \$6 & UP. Expert Writing, Typing & Printing. Also letters, reports, etc. DOWNTOWN---214-7254; FLORISSANT---921-5003; CREVE COEUR---997-2239; CLAYTON---726-0999; DES PERES---821-7281

Good luck to the Teke's in TKE week.

To the Blonde South County Girl: I see you every M-W-F in the Summit Lounge. I'm too shy to approach you and strike up a conversation. Please help me with the formal introductions. Wednesdays at Indoor would be nice.

Carol, Hope you have a terrific birthday! Your friends in Delta Sig

Chris in 11:00 Micro, I watch you at every class and I know you must have noticed me. You're always in my thoughts and dreams. I only hope you'll feel the same. I'll be in a brown leather jacket!

Classified Ads are free of charge for UMSL students, faculty and staff members. Others are charged \$3 for the first 40 words and 5 cents for each additional word (if more than 40 words, please attach ad to a separate piece of paper). Make checks or money orders payable to the University of Missouri-St. Louis (Sorry, we cannot accept cash payments). Please place your ad on the Classified Ad Forms available at the Current offices, 1 Blue Metal Office Building, or in front of the bookstore in the University Center. Include your name, ID number and the classification under which your ad should run. Due to space limitations, only one ad per subject may run.

Publication is guaranteed only for those ads which have been paid for in advance. Other ads may be deleted due to space limitations. No classified ads may be taken over the phone. The deadline for submission is 3 p.m. Friday of the week before publication.

The Current will not publish both first and last names in any ad. Ads considered by the editors to be in poor taste will not be published.

HAVE YOU ALWAYS HAD DISCOLORED TEETH? ARE YOU UNDER 30 YEARS OLD?

If so, the discoloration may have been caused by a drug given to you when you were a young child.

It has been alleged that a widely-used antibiotic prescription drug commonly referred to as Tetracycline may cause permanent discoloration of the teeth (yellow-brown-gray-black) if the drug is taken when a person's teeth are growing.

Tetracyclines were sold under several brand names including Achromycin, Achrostatin, Aureomycin, Declomycin, Minocin, Mystectlin, Panalba, Panmycin, Polycycline, Ronomycin, Signemycin, Terramycin, Terrastatin, Tetrex and Vibramycin.

A group of lawyers are presently representing hundreds of people making claims against various manufacturers of Tetracycline for the alleged damage caused them by discoloration or staining of their teeth.

If your teeth are discolored or otherwise damaged from Tetracycline consumed as a child, you may have a legal right to make a claim for compensation for this damage. This legal right may expire with passage of time.

For more information call this toll free number:

1-800-892-8021 — in Missouri
1-800-826-6152 — outside Missouri

TIMOTHY H. BOSLER, ESQ.
TETRACYCLINE ATTORNEYS GROUP
SUITE 800, WESTOWNE VIII
LIBERTY, MISSOURI 64068

They're Cheering For UMSL

Marjorie Bauer
features/arts editor

Cheerleading at UMSL? "Definitely, yes, responded a small, but extremely enthusiastic group, practicing the art of dancing and cheerleading on the balcony at Mark Twain Gymnasium.

Led by an equally enthusiastic and well-qualified coach, Carol McGraw, the team works year-round perfecting routines and staying in top physical shape for their performance, supporting the UMSL basketball games.

The squad has existed at UMSL, McGraw said, as long as basketball has. "Judy Berres, the retiring assistant athletic director, told me that at one time, UMSL boasted not only a cheering squad, but also a pompon squad. The difference being," she said, "that the pompon squad dances, while the cheerleaders do cheers to entice the crowd to cheer for the team."

McGraw, a teaching associate in biology on campus, is also cheerleading coach. She got into cheerleading, she said, by being a cheerleader. "I had a high school cheerleading squad," she said, "and when I moved to St. Louis, I did cheering at Priory School and also a year at Missouri Baptist. Once I started working on my master's at UMSL, I decided that's what I really wanted to do — coach cheerleading."

"My undergraduate degree is physical education, so I class myself as a coach. I'm also a gymnastics coach. I've worked here for four years with Olympiad, a private gymnasium group, which is a gymnastics training center. I am coaching a team there."

"I consider myself to be more qualified at this job than most, because I've got the experience with conditioning, gymnastics, plus dancing, which was my forte. So I feel my background is well rounded. I really enjoy teaching," she said.

The criteria for someone interested in joining the cheerleading team is that a student must be taking 12 hours credit and be a C average student, she said. "I've only been doing this for one year and as far as I can see, most people on campus don't even know there's an athletic department here. Most students seem to be so into the commuter mode that they don't know there's even a gym here."

"Cheerleading has two reputations," McGraw said. "Either that they're stuck up, prissy types or the opposite extreme, neither of which is true."

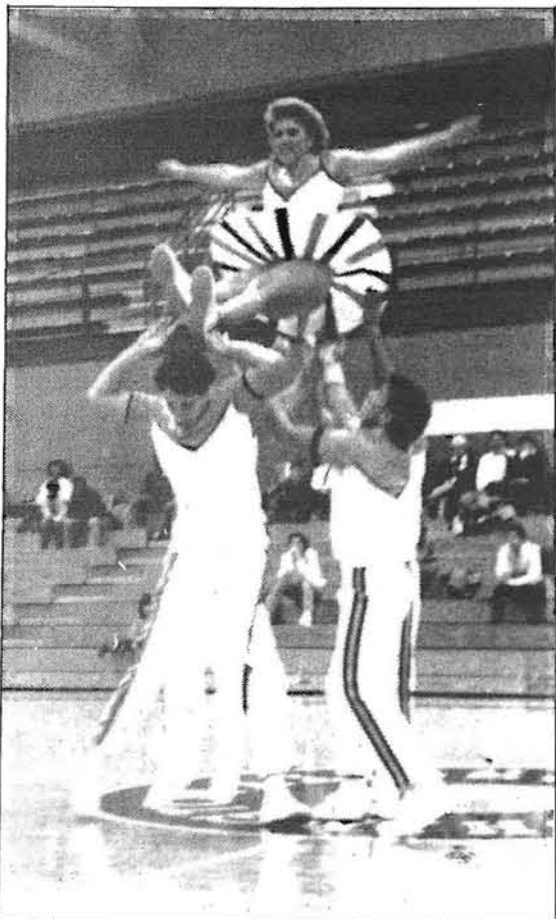
"A cheerleader," McGraw explained, "has to have some kind of interest in athletics. You've got to have the commitment to work hard, because you're going to get your body in top shape. We do stretching exercises before we even begin, and it's especially important for the guys, because of the skills needed to lift the girls."

"When you see ice-dancing, for instance, you think, 'that's easy.' But there's a lot of hard training behind that. And the same is true for cheering."

"I think I started the squad out on the right foot last year," she said, "when there were only girls and they didn't have a coach. Most of their work resulted from their having tried it."

McGraw explained that most of the Division I and II teams have males on the cheerleading team. "They're not 'sissies' by any means," she said. "They're probably some of the most well-developed youth in the sport because of what they can do. They have to train and lift weights constantly, which the girls do, too, to a lesser degree. They have to be flexible and have a 'fluid' motion," she said, "which means a rhythmic movement. We develop this over time. Their timing in action is crucial."

"Cheering satisfies the need to participate in athletic activities for those who don't like the contact sports, the roughness and competitiveness of the 'star' sports like tennis, but do want to be where the team goes, to support it," McGraw ended with conviction. "It's an artistic expression."



COMING DOWN: Members show how the pyramid comes down, ready to catch the top person of the group.

McGraw said her first goal in taking over the team was to get new uniforms for the group. "We went to camp and the girls just loved it," she said. "The camp was in Memphis run by the University Cheerleaders Association. The girls learned so much from all the big time schools such as Clemson, Nebraska and Oklahoma. I just can't wait to pick this year's squad to go. We don't have a chance to meet the really big teams here."

"They work so hard (at camp) for five days and there's a competition at the end. The squad picked to go in April will have a super time," she said enthusiastically.

The subject of injuries came up. "We did have a major injury last Dec. 18," she said. "It was the last day of finals, and the group was having photographs taken. The photographer said, 'Hey, that's great. Do it again!' After the photographs were taken and the pyramid was coming down, somehow the smallest girl on the team fell through the catching members. She fractured her skull. But there she is," McGraw said, "back again and as hard at it as ever!"

Apparently such accidents are freakish. "We work hard at avoiding injury," McGraw said. "The idea is not to 'get to the floor.' I watch everyone, so we do things like lifting the best possible to avoid strain."

"At the Olympiad I try to take the team where they can practice on trampoline, and there's a spring floor. It not so complicated, as it is just hard work," she said. "We start from the bottom and work up."

"The by-laws say I can pick eight guys and eight girls for the squad," McGraw said, adding that the group is active all year long. "I'm looking now for people to train. And I will pick a squad to go to camp. We aim for one guy for every girl."

"At camp, they'll meet members from highly experienced teams and they'll learn cheers all week long. They can jazz up the routines any way they want, so it gives freedom of artistic expression. And there are partner stunt competitions, too," she added.

Participating in such an effort, McGraw said, can really help UMSL's image. To foster interest, she said, UMSL sponsored a high school invitational this February, and "we had several city and county schools participating, so it was a good mix," she said. "I made a tape of the performance, and our team never looked so good. And the remarks of the high school kids, like, 'Look at those sharp college kids, they're so good,' really helped our leaders feel great about themselves."



Cedric R. Anderson

COACH: Carol McGraw, teaching associate in biology and cheerleading coach at UMSL, is looking forward to taking her squad to camp, later in April.



THE SQUAD: Back Row, Left to Right, Tighe Anderson, Kevin Harrah, Steve Barwick, Steve Berardino. Middle Row, Left to Right, Dana Aranson, Jill Vietmeier, Janelle Gonzales, Jenifer Scurlock. Seated, Left, Tracy Singer and Chris Kolodgie.



PYRAMID: Cheerleaders demonstrate their form in a multiple pyramid reaching its peak.

"The team has turned around about 900 percent to what they were doing this time last year," McGraw said, as we left to watch a demonstration of cheering versus dancing.

Those interested in joining the cheerleading team should contact Carol McGraw at the biology department or at the Mark Twain Building, where they hold practice sessions.

Explores The Mystery of The Male Physique

Richard Loren Klahs
book critic

"Chunks: An Intimate Look At Some Very Available Men"

by Patty Brown and Anna Sequoia

(M. Evans and Company, Inc. \$4.95)

In the past few years there has been a veritable explosion of publications and calendars featuring "This Year's Beefcake." What was once locked away in the closet, has come rushing forth to the streets. Men of all shapes, sizes, colors, etc. . . have been molded into sexual objects of desire.

From humble beginnings in magazines like "Playgirl" and "Cosmopolitan," to the more extreme "Blueboy" . . . the male physique has become an objet d'art.

BOOK REVIEW

No small enterprise here, the male body often translates into big bucks for publishers of books and magazines.

Keeping this in mind, two young women, Patty Brown and Anna Sequoia, have put together their own little treatise regarding this modern day diversion. Their book is "Chunks: An Intimate Look At Some Very Available Men" (M. Evans and Company).

Brown and Sequoia have assembled a motley crew. Their bevy of men are not necessarily "hunks" (although some of them could be). Rather, these dudes fall into the "chunks" category.

The authors have borrowed techniques used by "Playboy" magazine. Along with revealing photos of the men in question (posing in various states of undress) the male models are asked to fill out little questionnaires. Their responses to seemingly innocuous questions, provides the reader with insights regarding the men's various sensibilities and idiosyncrasies.

The following are but a few inspired examples from "Chunks: An Intimate Look At Some Very Available Men":

Marty Sapperstein is 5 feet 10 and lives in New York. His favorite actress is Jacqueline Bisset. His favorite card game is Poker. He loves to jog and windsurf. A little on the chunky side, Marty says "I make every meal a sensual occasion."

Alvin J. Porter, Ph.D. is 5 feet 9 and weighs in at under 145 lbs. A graduate of M.I.T., Alvin's favorite actress in Victoria Principal. He likes buttermilk, and his favorite movie is "The Sound Of Music." Something of an unkempt preppie, Alvin has been quoted as saying: "I want a girl with lots of meat on her, and really big breasts. That's what I want."

Chip Ledge, a muscular outdoorsy type sums it up this way, "I like a van!" Chip is a Capricorn and has muscles " . . . hard as rock!"

While all of the men chosen by the authors are unique, some of them stand above and beyond the crowd.

Eddie Marone, for instance, with all of his leather and chain gear comes across almost sensitive. A community college student, Eddie admires actor Lorenzo Lamas (alias: "Lance" of "Falcon Crest.") Another native New Yorker, Eddie is fond of pizza. He dreams of owning " . . . a big Cadillac" and "his favorite actress is Linda Evans (alias: "Krystal Carrington" of "Dynasty.")

Dentist, Stanley Robert Hertz, D.D.S. shares a few dental tips. "The hardest teeth to floss yourself are the molars." "Flossing three times a day keeps the periodontist away!" His favorite actress was Margaret Hamilton (who recently passed away and was featured as the wicked witch in the film "The Wizard Of Oz.") One of life's greatest regrets for Dr. Hertz is expressed in his quote: "I'm so very sorry I never got to meet Walt Disney."

Nathan Olinsky, who likes to go by the moniker "Brick," sums up his philosophy with a few notable quotes as well. "I like to take a girl out to dinner a few times before the 'main event.' It's nice, it makes us both feel good, and it gives me a chance to weed out the weirdos."

The men described by Brown and Sequoia are from the so-



COMPUTING: Two members of last year's Elderhostel program discuss their printout in the computer class.

Elderhostel Sponsors 'The St. Louis Renaissance'

Eileen Pacino
reporter

The month of May sees departing UMSL graduates who think they know a thing or two and are eager to leave books and lectures behind.

May also sees a new crop of older and wiser men and women come to UMSL eager to hear lectures and to learn a thing or two. They are the participants in a week-long educational program from May 18 to 24 called Elderhostel.

Based on the European youth hostel concept of low-cost travel and housing accommodations, Elderhostel offers short-term, reasonably-priced academic programs at over

850 institutions in all 50 U.S. states, and in Canada, Australia, Great Britain, Ireland, Italy, Israel, Mexico, Spain and Egypt.

Programs are open to individuals 60 years of age or older. Spouses or companions 50 years or older may accompany a participant. For fees of \$185 to \$205 per person, UMSL Elderhostelers receive six nights in a double room, all meals, five days of classes, and a variety of extracurricular activities.

There is financial assistance in the form of a limited number of "hostelships" (scholarships) for

See "Elder," page 8

See "Men," page 8

Warns Against Setting Forest Fires

Jim Schwartz
reporter

Picture the setting: a 65 degree day with a slight wind blowing, and the sun shining. My friends and I had gone out to the country to spend the night at my camper. Usually there is no one else around when I go out there. But this day there was another group of slightly older guys at a nearby camper.

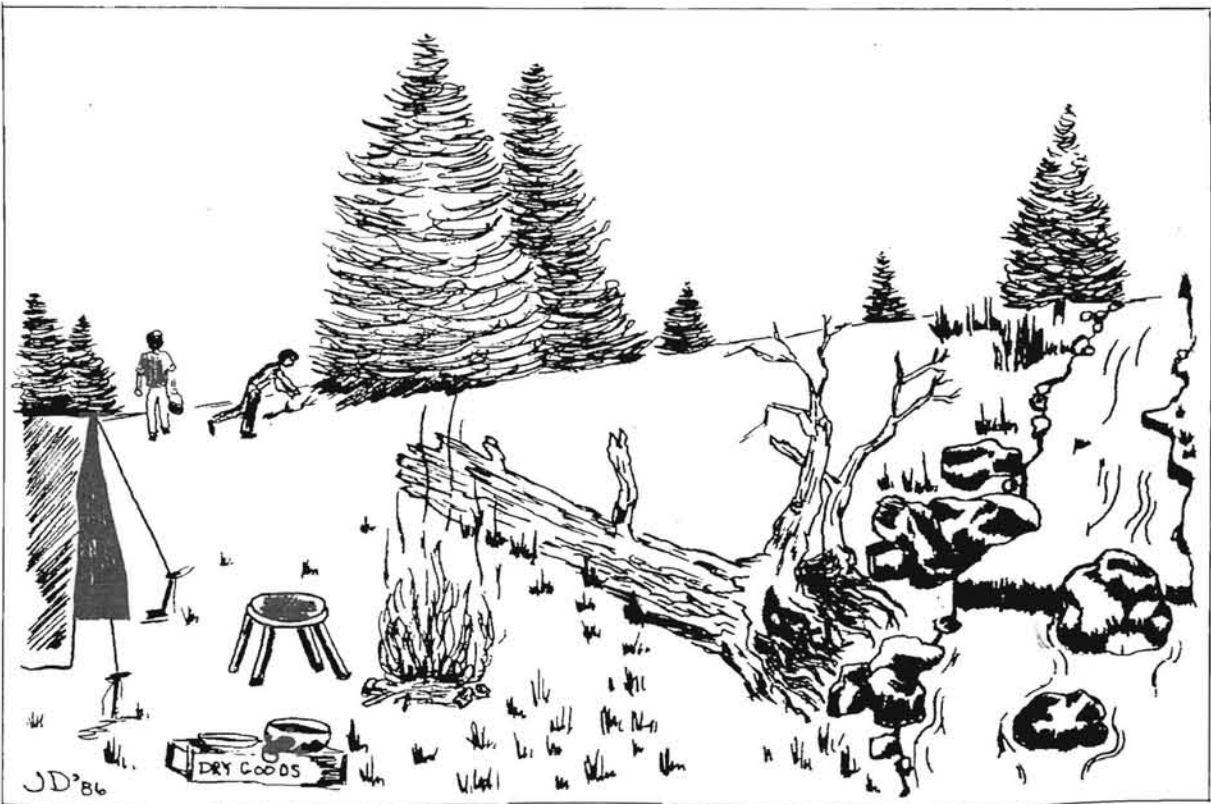
They had arrived before us, and had already managed to bury their truck in the mud of a hillside which was drenched from a recent rain-fall. It took all seven of us to get that monster out, accomplishing our good deed for the day. Little did we know, things were going to get worse.

The breeze blowing kept things windbreaker cool, so both campsites had fires going. The other group of guys celebrated the liberation of their truck by going fishing, leaving their campfire lit, in the breeze, surrounded by dry leaves; get it?

Their campsite was just far away enough through the trees to where you had trouble seeing it clearly. I thought I was seeing things at first, for through the trees I saw what I thought was a bunch of campfires going. I looked and looked and finally yelled to my friends about the flames.

My one friend from the army, who had a better view, jumped up and ran towards the fire shouting, shovels in hand. My other friend and I didn't think it was that serious because the other guys had just left.

But as we drew closer we could



FOREST FIRE! A pleasant weekend in a pastoral setting can turn into a raging disaster if care is not taken in dousing all unattended fires. The danger cannot be stressed enough.

see that the flames were already nearing the propane tanks on their camper.

The three of us spent the next 45 minutes or so wrestling with the spreading flames. It's a creepy feeling one gets when fighting fire, wondering if you're going to win or lose. It was a new one on me, and I didn't like it very much.

But we succeeded in putting out the fire at the cost of a pair of

singed tennis shoes. But I didn't mind about my shoes, as the flames eventually would have spread to my camper.

Meanwhile, the other guys were still out fishing. We tried to find them, but could not. So we left a note on their camper explaining their charcoal colored property. The burnt ground went real nice with the two foot trenches they had dug with their truck tires. Learning a valuable lesson, we doused our fire extensively before leaving.

I must admit, I've never taken Smokey the Bear too seriously. But now I can see the importance of his message all too clearly.

Campers please, summer is on the way. That means a lot of dry stuff will be laying around, the stuff that forest fires are made of. **Put out those campfires!**



HITCHHIKERS: John Cusack and Daphne Zuniga are unwilling traveling companions in Rob Reiner's "The Sure Thing," new on video

'Sure Thing,' 'Street Scene' Prove Hit Videos

Nick Pacino
film critic

Rob Reiner's acclaimed romantic-comedy "Sure Thing" (1985) has made its video debut from Embassy Home Entertainment. John Cusack and Daphne Zuniga play college students who are reluctant companions on a cross-country auto trip to California.

Cusack, with an upper-class, fast-food nature, and Zuniga, a serious polished type, are gilded foils for each other. Both screen novices, they show genuine talent, as their comic adventures bring out some delightful qualities.

Talented director Reiner gives us his creative salute to the Gable/Lombard comedy classics of the 1930s, and a superior teenage story in the process. VHS/Beta Color 94 min. Rated PG-13

A vintage melodrama with graphic realism, "Street Scene" (1931) has hit the racks from Kartes Video. Stars are Sylvia Sidney (Damien Omen II 1978), William Collier, Jr. and Beulah Bondi (It's a Wonderful Life 1946).

Faithfully based on Elmer Rice's Pulitzer Prize-winning play, director King Vidor ("Duel in the Sun" 1947) uses pioneer camera work to show the lives of tenement dwellers in Depression-era New York City. The acting is superb, particularly by Bondi, in her film debut. The dynamic music by Alfred Newman, winner of nine Oscars, is important icing on this emotion-filled study of a varied lot of humans. VHS/Beta B/W 78 min.

Cindy Williams ("Laverne and Shirley" 1979) and Ben Vereen (All That Jazz 1979) star in the absurdly funny film, "Gas-s-s" (1970), from Lightning Video. A defense plant leaks a gas which speeds up the aging process, leaving only the under 30 crowd to run the world. A teen-age fantasy if there ever was one!

Master horror director Roger Corman ("The Masque of the Red Death" 1964) brings out the best in his young cast, along with some hilarious insight to the plot. VHS/Beta. Color. 79 min. Rated PG.

A stimulating World War II Film, "One of Our Aircraft is Missing" (1941) is just out from Republic Pictures Home Video. Directed by Michael Powell and Deric Pressburger, it stars Eric Portman, Peter Ustinov and Godfrey Tearle.

An exciting and thoughtful film sketch of British bomber crew forced to bail out over Nazi occupied territory, and their battles to evade capture. VHS/Beta. B/W. 103 min.

RKO Home Video announced the release of several episodes from two classic TV series, "The Dick Powell Theatre" (1961-63) and "The Rogues" (1964-65).

The award-winning "Dick Powell Theatre" used top-notch actors, directors, writers, camera people and up-coming stars. Producer Powell, who played in some episodes, employed such luminaries as Ralph Ballamy, Edgar Bergen, Lloyd Bridges, Mickey Rooney, Carolyn Jones, Ronald Reagan, Milton Berle, Peter Falk (an Emmy winner for his role), Lee Marvin, Keenen Wynn, Inger Stevens and many more.

Men

from page 7

called "real world." They are the lawyers, dentists, accountants. They are the aging hippies, dumb jocks, and guys next door.

These men are plentiful and they are mostly all looking for one thing: "Some beautiful girl to come home to."

If nothing else, this book epitomizes the state of the art when it comes to the business of "beefcake."

While the other books and calendars simply hint at the heart of the matter, the men interviewed in this book put it directly on the line.

In the words of Nathan "Brick" Olinsky, "I'm great, in bed!"

Elder

from page 7

those who cannot afford fees.

Elderhostel is a state-wide program in Missouri. Some of the participating institutions besides the University of Missouri system are: YMCA of the Ozarks-Potosi, Park College-Parkville, Avila College-Kansas City, Hannibal-LaGrange College; and in St. Louis, Thompson Center and Fontbonne College.

If you think Elderhostel courses are lightweight, think again. University of Missouri-Rolla is offering "Astronomy, Stonehenge, and other Marvels." University of Missouri-Columbia is offering "Do They really Speak Elizabethan English in the Ozarks?"; and Park College is featuring "Ludwig van

Beethoven and the Romantic Revolution."

It's not all long hair, however. Other choices include "Wild, Edible Plants: Fun, Free, and Healthy" Central Missouri State University; "Computers Don't Byte People" Avila College; and "The Lively Art of Storytelling" Thompson Center.

Here at UMSL the week is devoted to "The St. Louis Renaissance." This course will focus on the architectural rebirth of St. Louis. Students will be examining in the classroom and via fieldtrips renovation projects of Union Station, the Fox Theatre, and large-scale neighborhood revitalization achievements, such as Souldard

Lafayette Square areas. The class will also focus on the growth and development of the St. Louis Symphony.


The courses are noncredit. Prior knowledge is not required, and there are no exams. Hostellers can have Ph.D.s or never have graduated from high school.

Registration is now open. For more information, call Marilyn Maguire at 524-0155.

Last Chance to Write Features For Your Portfolio! Only Three Issues To Go! Call Marjie — 5174.

THE
KWMU
STUDENT STAFF
INVITES
ENTHUSIASTIC
STUDENTS
INTERESTED IN
PRODUCTION
NEWS
PROMOTION
MUSIC
TO JOIN
OUR STAFF
FOR INFORMATION ABOUT
FM 90.7
CALL 553-5488
OR STOP BY 105 LUCAS HALL

Enterprise doesn't think a new grad should have to drive an old bomb.



After four years of college, you've earned the right to drive to your brand new job in a brand new car. Even if you don't have the bucks for a big down payment.


That's why Enterprise offers a special leasing program just for seniors and graduate students in their final semester, and recent college graduates. With Enterprise, you make no down payment. You can choose from any of GM's new passenger cars or light duty trucks and pay a low, fixed monthly rental. And you can take up to 90 days to

make your first rental.

It doesn't take a college degree to figure out that Enterprise offers a smart, economical alternative to car ownership.

If you'd like to know more about our special leasing program, just give us a call. Or send in the coupon below to receive a copy of **The Facts About Auto Leasing**, a brief, no-nonsense booklet that spells out the benefits of leasing from Enterprise.

ENTERPRISE LEASING



Clayton/863-0055 • Downtown/231-4440
South County/842-6220 • West County/965-2222

Over 200 offices coast to coast.

Please rush my free copy of **The Facts About Auto Leasing**.

☐ Yes, I would like you to call me with more information.
I'm interested in a (make) _____ (model) _____

NAME: _____
ADDRESS: _____
CITY: _____ STATE: _____ ZIP: _____
PHONE: () _____

Mail to Enterprise Leasing, 8844 Ladue Road, St. Louis, MO 63124

Rivermen Back On Top With 7-1 Week



Cedric R. Anderson

UMSL MUSCLE: Gray Schwartz, Ron Hoerner, John Murphy and Tony Leasck are among the reasons why the UMSL Rivermen went 7-1 last week and improved their record to 14-7.

Tennis Decline Continues

The UMSL tennis team suffered through another tough week, with the only ray of sunshine being the Rivermen's first victory of the season, a 5-4 win over Webster University.

The men finished the week with a 3-1 mark to make their season's totals 1-5 overall and 0-2 in Missouri Intercollegiate Athletic Association play. The Rivermen went 0-4 last week and are now 1-8 and 0-5 in the MIAA.

Because of darkness, the Rivermen's match with Webster was played in two days. The No. 1 and No. 2 doubles matches were played on the second day. Scott Stauffer and Brett Schramma won 7-6, 6-1, 6-3, while Alex Schaubitz and Neil Williams won the other doubles match, 6-4, 6-1.

In singles competition, UMSL got wins from Stauffer (6-1, 6-4), Schaubitz (6-1, 6-0) and Tom Swift (6-2, 6-2, 6-1).

Two of the Rivermen's losses came against Knox and Greenville (both by 8-1 scores) in a triangular meet. UMSL defaulted for two of the losses, as their sixth man was unable to make the trip.

In the loss to Knoxville, the doubles team of Rich Rogers and James Boldt won, 8-5. Two UMSL singles matches went to three sets. Boldt, again, was the lone winner against host Greenville. He took his singles match, 3-6, 6-4, 6-2.

UMSL tennis coach Jeff Zoellner had some unfavorable words about the playing conditions.

"The Greenville match was played under the lights, and the lights were poor," he said.

Against Saint Louis University, the Rivermen also fell, 8-1. The Rogers and Boldt doubles team came away with the only UMSL victory, 4-6, 6-1, 6-2. In singles matches, Rogers and Boldt both lost in three sets, the only UMSL players to do so. Rogers lost 3-6, 7-6, 0-6. Boldt lost 1-6, 6-3, 7-5.

The men will host Northeast Missouri State on Friday at noon.

The UMSL women's tennis team took three losses in the Missouri Western State Quad. They lost 8-1 to Kearney State, 5-4 to Missouri Western and 7-2 to South Dakota.

Sue Steiniger was the lone UMSL winner against Kearney State (who replaced William Woods). She took her singles match 4-6, 6-1, 6-1. Seven of the eight losses came in two sets, with Nancy Tao going three sets before falling 2-6, 6-4, 3-6.

Against Missouri Western, Steiniger again was a winner, 6-2, 2-6, 6-3. She was joined by Tao (6-1, 6-1) and Stacey Schmidt (6-0, 6-0). Tao and Nancy Sedej picked up a perfect match victory in their doubles competition with identical 6-0 whitewashings.

Schmidt (6-3, 6-4) and Tao (6-1, 6-3) were singles winners for UMSL in the match against South Dakota. Tao and Sedej took their doubles match top three sets before falling.

In a single match against Northeast Missouri State University, the Riverwomen were shut out, 9-0. The Riverwomen failed to pick a game in the competition.

The Riverwomen host Tennessee Martin and Southeast Missouri State in their next action on April 16.

HOC SOC

Game Results

Monday, March 31

COED
ROTC 6, Heavenly Dog 0
Purple Haze 5, Net Results 2

MEN'S

NADS 4, Tekes 0
Sting Rays 6, Pikes 3

Wednesday, April 2

COED
NFC 4, Steamers 0
Pikes 1, Sting Rays 0

MEN'S

Arrows 5, JSH 1
ROTC 7, Whatever's 4

Dave Brown

A week ago, UMSL baseball Jim Brady predicted that the Rivermen were ready to go on a roll, and they did not let him down. They went 7-1 and improved their record to 14-7.

The Iowa Wesleyan team was the first victim for the Rivermen as they played a doubleheader last Tuesday. Ken Eckardt a freshman, picked up his first win of the season in the first game, 5-2, and Tim Braneky was the winner in the 16-6 second game victory.

On Wednesday, the Rivermen faced crosstown rival St. Louis University, pulling out a very close 4-3 win. Don Bock threw all nine innings to gain the victory. Bock had eight strikeouts and very good control.

"He did a good job," Brady said. "The key to his success is that he doesn't walk people."

The Rivermen scored one run in the fourth and scored the other three in the seventh. They broke a 1-1 tie when John Murphy and Ron Aiello singled and Vic Woebel followed with a double to score Murphy. Russell Muenks then hit a sacrifice fly to score Aiello for the third run. Greg King, Tony Leasck and Gary Schwartz all walked to score Woebel with what became the winning run.

Thursday, the Rivermen faced a tough Southern Illinois University-Edwardsville team. The UMSL squad was handed a 4-3 loss in ten innings. Brady felt his team should have won the game in regulation, but a controversial call nullified a

Ron Hoerner two-run homer. In the seventh Hoerner hit a "450-foot blast" that landed foul but had been fair when it left the park. However, UMSL did not get the call, and SIU-E kept a 2-1 lead and increased it to 3-1 in the eighth.

The Rivermen fought back to tie the game in the ninth. Hoerner and Aiello singled and Joe Kuster advanced them with a bunt. Muenks followed with a single to even the score at 3-3.

Although SIU-E won the game in the tenth on a UMSL error, coach Brady was pleased with his team's effort.

"We feel it was a psychological victory," he said. "We showed them that we could play with them. That's a ballgame we should have had, no question."

The team also received a jolt when second baseman Greg King suffered a broken wrist in the sixth inning in a collision at the plate and will be lost for the season. King, who had not committed an error all season, had been an integral part of the team thus far.

"Greg will be sorely missed," Brady said. "He performed very well in the second spot in the order."

John O'Brien has replaced King in the lineup. According to Brady, O'Brien is an aggressive player who can handle the bat well. Brady says that if O'Brien can play under control his defense will take care of itself.

With no time to regroup, the Rivermen played Missouri Baptist in a doubleheader on Friday. Bob Simpson picked up the win in the first game 4-3, and John Markham

was the winner in the 10-3 second game. Simpson came on in the second game to gain a save to go with his win.

"Bob is really pitching well. I feel comfortable going to him any time," Brady said.

UMSL scored the winning run of the first game when Gary Schwartz drew a walk, and Tom Lewis came on to pinchrun for him. Lewis, although he is a pitcher, is also one of the fastest men on the team. He proceeded to steal second and then scored on a Mike Prendergast single.

The highlight of the second game was a two-run homer by leftfielder Joe Kuster that "put the game on ice." John Stevenson and Greg Ramsbottom also contributed some key hits to the UMSL attack.

To conclude a busy week, the University of Missouri at Rolla Miners came to town for two games on Saturday.

Bock raised his record to 4-1 even though he didn't have his best stuff in the first game. Leasck and Murphy led the way as UMSL won 11-4. Murphy went 3-for-4 and hit what Brady termed "two gargantuan shots."

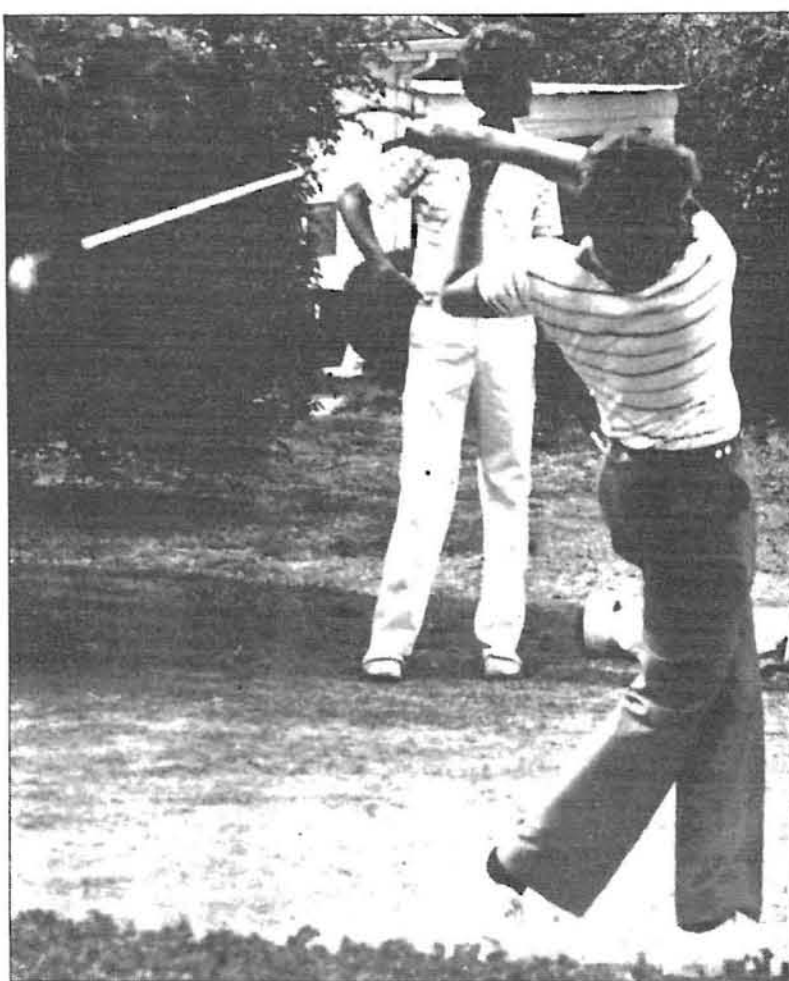
"I was tentative about starting him (due to an injury), but trainer, Charlie Kennedy did a good job getting him ready for the game," Brady said.

In the nightcap, Tom Lewis again pitched a fine game, posting a 15-2 win.

Because of the huge lead, Brady was able to be flexible and insert some other people into the game.

See "baseball," page 11

SIU—E Takes Riverman Invitational



The UMSL Rivermen golf team fared well in their first competition of the season as they hosted the annual Riverman Invitational. They finished in a tie with St. Louis University for third place with team scores of 322.

Southern Illinois University-Edwardsville won the tournament with a team score of 309. The University of Missouri-Rolla placed second with a team score of 314, and had the Invitational medalist in Dyke Miller, who shot a one-over-par 72.

UMSL's Bob Cissell tied Jonathon Lee of Washington University and John Olsen of St. Louis University for fifth place with a six-over-par 77.

Team Scores: Southern Illinois University-Edwardsville, 309; University of Missouri-Rolla, 314; UMSL, St. Louis University, 322; Washington University, 326; Lincoln University, 344; Principia College, 371; Blackburn, 407.

Medalist: Dyke Miller, UMSL, one-over-par 72

73- Kyle Moats, SIU-E

76- Todd Cress and Keith Gocal, SIU-E

77- Bob Cissell, UMSL; Jonathon Lee, Washington University; John Olsen, SLU

Soccer-Softball Works For Three

Diane Schlueter

asst. sports editor

Editor's Note: Last week, the basketball/softball players explained their feelings about playing two sports. This week, the soccer players, who also play softball, will discuss their feelings on the subject.

Like basketball and softball, soccer and softball are two very different sports. Three athletes, Laurie Aldy, Kris Caldwell and Linda Rogoz, participate in the soccer and softball programs at UMSL, and they agree.

"Soccer is hustling and being at the right place at the right time," Aldy said. "Softball is more precise. The practices are a lot more intense. Lisa (Studnicki, UMSL softball coach) brings it out."

In comparing the two sports, each mentioned a difference in the coaching styles. "Lisa makes you work, and Kenny (Hudson, UMSL soccer coach) expects you to," Rogoz said. "Lisa is not afraid to tell you what you are doing wrong. Kenny is more laid-back."

"Lisa is more intense as a coach," Aldy said.

Caldwell is appreciative for all Studnicki has done for her. "She's taught me a lot," she said. "She found me a job so that I could play."

Margaret Graff, assistant softball coach, has also been a great help to the three. "She adds the humor," Aldy said.

"She gets you up when your depressed," Rogoz said.

Aldy, who finished the soccer season with nine goals (second on the team), is also currently leading the Riverwomen in seven different



TWO OF THREE: Linda Rogoz (left) and Kris Caldwell, along with Laurie Aldy, are three UMSL softball players who also play on the Riverwomen soccer team.

offensive categories. Among the seven are a .370 average, 20 hits and 21 runs scored. Aldy is also the only member of the team to have hit a homerun.

Aldy says that the discipline in softball is harder. "Softball is a lot more time consuming than soccer," she said. "Softball is everyday. Soccer was only on the weekends. In softball, we miss more classes."

Rogoz is the UMSL leader in RBIs with 10, and two of those were game winners. She is also leading the team in doubles with three.

Caldwell, who is a back-up goalie for UMSL, is currently tied with two others (Marlene Burle and Grace Gain) in walks with nine. Caldwell also has a game-winning RBI against Southern Illinois

University-Edwardsville, in a 3-2 Riverwomen win.

Between the soccer and softball seasons, there is a short break for those athletes who chose to play both sports, unlike the basketball and softball seasons. As practice for softball began a few weeks before the basketball season ended, only seven players began the workouts on time. Four players were still involved in the basketball season. (Gain, Kaye Klotzer, Deb Moreno and Juanita Snow)

Because the entire team was not at the pre-season workouts, concentrating was harder for the players who did participate. "There were only seven of us at the beginning because of basketball," Aldy said. "It was hard to stay intense, but we stuck together."

Softball Team Runs Into Difficult Week

Dan Noss

sports editor

The 3-4 slump that the UMSL Riverwomen softball team (14-9) suffered this past week was of no alarm according to coach Lisa Studnicki.

"I anticipated this," Studnicki said. "We're into the better teams now."

Studnicki had a three-fold explanation for the losses.

First, were tired right now," she said. "Against Central and SIU, we hit the ball well. But we just didn't get any hits. We also started to see some quicker pitching. The ball has a little movement on it."

UMSL's last five losses have come by one run. The strikeout total for the last four games was 14. "We're being too hesitant. That's too many strikeouts," Studnicki said. She also said that a number of the strikeouts came without the Riverwomen swinging at a pitch. Something Studnicki feels is unacceptable.

UMSL had just seven hits in the final three losses and scored just one run. Studnicki feels this goes back to being tired. Many times when a player goes into a slump, they tend to do a lot of things that they don't do normally.

Last weeks UMSL Riverwomen scores:

UMSL 7, NW Missouri 0
NW Missouri 4, UMSL 1
Wayne State 1, UMSL 0
UMSL 10, McKendree 1
Central Missouri 2, UMSL 1
SIU-E 1, UMSL 0
UMSL 1, McKendree 0

If it's close they should swing. You have to make the other team do three things: field, throw and catch the throw," Studnicki said.

She was concerned that the Riverwomen will get too far into the slump by worrying too much about it.

"I don't want them to push and press like thier in a big hitting slump."

The competition was the best that UMSL had faced this season. It wasn't only the pitching that was giving UMSL problems. In the game against Wayne State, Laurie Aldy led off the game with a triple. She sat there as the Riverwomen failed to get even a sacrifice fly to bring her in.

"I don't know what I was doing over there coaching," Studnicki said, taking blame for the 1-0 loss. "I was relying on someone to bring her in. With that leadoff triple we were ready to go. But we couldn't do anything."

Wayne State is ranked 13th in the nation.

Studnicki still feels her team will come around for the final three weeks of the season. She says that

teram offense is the only problem at this time.

"The pitching is holding their own and the defense is working things out," she said. "The other teams are really having to work to score runs."

Studnicki said that recent practice sessions have included batting practice with overhand pitching to get the team accustomed to harder pitching. She also hasn't been mentioning the won-loss record at practices.

"It's hard to lose those games," she said explaining a bit of depression on her team. "But I told them, let's not pay attention to the record. If we win, we win. If we lose, we lose."

Lucy Gassei is headed for a record-breaking season. Already the school record holder in wins (24), strikeouts (124) and shutouts (13), she is closing in on the season record for wins of 12. The mark was set by Carol Hulbert during the 1980 season.

Another Riverwomen, Laurie Aldy, is also on a record setting pace. The sophomore is hitting .408 (the school record is .362, Kathy Boschert-1983) and should be in good shape to set a couple of hitting records. Aldy's 28 runs and 31 hits bring her within range of UMSL records, also.

Friday and Saturday, the Riverwomen will compete in the Missouri Intercollegiate Athletic Association Round Robin at Warrensburg, MO.

Baseball

from page 9

Pitchers Kevin Blanton and Matt Naumann, in his first at-bat of the season, both drilled doubles to cap off a fine day for the Rivermen.

One of the most impressive aspects of this team has been their ability to fight through injuries. Stevenson, Kuster, Murphy, Hoerner, Markham, Eckardt and Prendergast have all faced some type of physical problem this season, but have battled back.

"These guys still keep coming out and getting after it," Brady said. "That's a trait that I admire. It's snowballed. Everyone has picked everyone else up."

The UMSL running attack has come a long way since the start of the season. The Rivermen stole 17 bases against Iowa Wesleyan, ten against Missouri Baptist and three versus St. Louis University in a single game. The bunting game has also been used well.

"I'm pleased with both phases," Brady said. "Running opens up another aspect of our game. It gives us an extra dimension."

The Rivermen will face some tough competition this week as they play Southern Indiana University, SIU-E and Wright State, who is ranked 16th in the country.

"If we continue to maintain this pace and string together five, six,

seven victories in a row, we'll be able to look back and say this was the week that launched us," Brady said. "This week will be a deciding factor as to whether we will continue our winning ways."

Leasck Likes To Keep Things In Perspective

Dave Brown
reporter

Tony Leasck is a young man who like to keep things in perspective. A transfer student from Missouri Western, Leasck tried not to set his sights high for his first season on the UMSL baseball team.

"My main concern was making the team and starting," he said. "I'm just glad to be playing."

"Playing" is an understatement for what Leasck has accomplished this season. He is second on the team in batting with a .419 average. He leads the team in walks, has fourteen runs batted in and has nine stolen bases. Leasck was the "Hitter of the Week" in the Missouri Intercollegiate Athletic Association for the first week of the season.

Although he has performed well thus far, Leasck has set no personal goals.

"Staying healthy is the big goal," he said. "I just want to continue to hit and help out."

A switchhitter, Leasck sees no big secret to his success. "I'm seeing the ball really well this year," he said. "I also think it is really an advantage to hit from both sides."

Leasck has been hitting the weights for the past two years but is still surprised by the home runs he has hit.

"You have to keep things in perspective," Leasck said. "I keep telling myself I'm just a singles-doubles hitter."

UMSL baseball coach Jim Brady has been pleased with Leasck's performance this season.

"Tony's a self-made player. He's worked hard ever since the first workout."

"He always gives 110 percent, whether I'm on his case or heaping praise on him," Brady continued. "He always responds with a good effort. I guess the best compliment I can give him is that he is a gamer."

"Tony's a self-made player. He's worked hard ever since the first workout."

—Jim Brady

In the back of his mind, is a shot at the pros. But, Leasck isn't getting his hopes up. "It's sort of a 'be-at-the-right-place-at-the-right-time' kind of thing," he said. "You need a lucky break."

The junior psychology major plans to attend graduate school when his days at UMSL are over. If he can continue to "keep things in perspective," Leasck may help lead the Rivermen to an NCAA playoff berth before he's through.

COME JOIN THE MURDER CITY PLAYERS AND THE UMSL JAZZ BAND

Participate in the
St. Louis Post-Dispatch
and
KWMU 90.7 FM
WALK FOR RADIO
walkathon which will be held at 2 p.m.
Sunday, May 4, 1986 at UMSL

YOU CAN WIN . . .

- \$200, \$300 or \$500 for your student organization
- a compact disc player from **The Sound Room**
- a weekend for two at the **Sheraton Plaza Hotel**
- a touring bicycle from **Touring Cyclists Shops**
- and other prizes from these sponsors

Audio Alternative
Broadway Oyster Bar
Clark & Clark Inc.
Dr. R. Manestar, Chiropractor
Candice's Ristorante
Paul's Books
Sound Warehouse, Dellwood
Webster Records

Bob's Package Liquor
Streetside Records
Vintage Vinyl
Lettuce Leaf
Vic Tanny
Looks Plus
Face & Body Ltd.

and Grey Eagle Distributors, Inc.
The touring bicycle from **Touring Cyclists Shops** will be
on display at **Thomas Jefferson Library**.

Sponsor sheets and envelopes
available at **KWMU, 105 Lucas Hall**.



Students
Walking For
Students

All proceeds go to help improve the
Student Broadcast Lab

For more information call Virginia at 553-5968.

This ad provided by KWMU student staff.



University of Missouri — St. Louis

upb SUMMIT SHOWCASE

Who will you
be spending
friday night with?

(April 25th)

WEDNESDAY NOON LIVE

VISION
APRIL 16th

11:30 - 1:30p.m.
U. Center Patio



CHEERLEADING TRY-OUTS

for
U.M.-St. Louis 1986-1987 Squad
Monday April 21 & Wednesday April 23
in the
Mark Twain Gym, North Balcony

Try-out material will be
taught Monday April 14
thru Friday April 18 at 2:00
p.m. in Mark Twain Gym.

Try-outs are open to all U.M.-St. Louis students
MALE and FEMALE, carrying a minimum of 12
credit hours a semester. Experience is not
necessary. Enthusiasm and the desire to be
better are!

It's Coming

YOUR BIRTHDAY CELEBRATION!

APRIL 23, 1986

University Commons
(In front of the University Center)

10:00 - 3:00 Free Roller Skating!! Games-Prizes-Fun

City Mimes Juggling By Crank Hot Air Ballons

10:30 - 2:00 Picnic-Food Specials at Discount Prices

11:00 UMSL 'Swing Shift'

12:00 - 2:00 FAIRCHILD

3:00 - 6:00 Special Musical Guest

Dicky Betts The Greg Allman Band
And The Allman Brothers Reunion

Sponsored by the
University Program Board

