

University of Missouri, St. Louis

IRL @ UMSL

---

Current (1970s)

Student Newspapers

---

3-30-1978

## Current, March 30, 1978

University of Missouri-St. Louis

Follow this and additional works at: <https://irl.umsl.edu/current1970s>

---

### Recommended Citation

University of Missouri-St. Louis, "Current, March 30, 1978" (1978). *Current (1970s)*. 235.  
<https://irl.umsl.edu/current1970s/235>

This Newspaper is brought to you for free and open access by the Student Newspapers at IRL @ UMSL. It has been accepted for inclusion in Current (1970s) by an authorized administrator of IRL @ UMSL. For more information, please contact [marvinh@umsl.edu](mailto:marvinh@umsl.edu).

## Energy cuts prompt four-day work week

Bev Pfeifer Harms

UMSL operations will be changed to a four-day, ten-hour per day work week during the upcoming summer session, June 12 through Aug. 4.

This temporary change, announced by Chancellor Arnold B. Grobman this week, is in response to a University Cabinet decision that all campuses should develop additional measures for energy conservation.

Grobman developed the shorter work week as UMSL's solution to the problem. After approval by the University Cabinet, UMSL Senate's Fiscal Resources and Long-Range Planning Committee and a special ad hoc committee established to look into the matter, the program was adopted.

Since UMSL only uses coal sources for air-conditioning, it will be sensible and economical to try a Monday-Thursday work

week during the warmer months, according to Grobman. He feels with the settlement of the coal miners' strike, coal costs will increase and the shorter week is an attempt to keep UMSL cooling costs to a minimum.

"Should the program result in expenditures for energy below the expenditures for the comparable period last year, those savings will be transferred to the Special Equipment Fund," Grobman stated in a campus-wide memorandum.

"Right now the plans are only definite for the summer," said Grobman. "We have not made any plans for the fall."

"We are going to see what the disadvantages and advantages are in the program before we proceed any further," he said. The ad hoc committee will make a final report to the chancellor following the program.

The hours that all full-time

staff will have to work to meet the ten-hour day are not yet certain. Clerical staff members seem to be equally split over approval of the change.

Irene Grant, an Arts and Sciences senior clerk, said she approved of the longer day. "I won't be personally affected by it. I would prefer that the lunch hour be cut to 30 minutes, so that we could go home a half-hour early."

Currently, most full-time staff members work from 8 a.m.-5 p.m. Following the same starting time, the longer work day would last until 7 p.m.

Jan Scott, secretary in the Student Affairs office, said, "I would be completely in favor of it if it were optional. Sometimes people plan activities that a longer day might interfere with. Personally, I'd be in favor of coming in an hour earlier so I could go home at 6 p.m."

Another full-time employee who wished to remain anonymous

said, "It wouldn't work for me because I have children. My husband and I also work different shifts. Since it is being implemented though, I would prefer either a 30-minute lunch or coming in earlier."

Other employees felt since they were already on campus, it didn't make much difference if they had to stay two more hours.

Cathy McGrane, a University Center secretary, said, "I like it. I think I could get a lot more done in two hours. Besides, I would also enjoy a three-day weekend. I do think it will be heard for the employees to readjust back to a five-day week in the fall."

Another immediate problem will be the rescheduling of summer classes. According to H. E. Mueller, director of admissions, this will not present a significant problem.

Curt Watts, student member of the senate committee, said the entire committee was gen-

erally favorable to the summer program but expressed serious doubts about its feasibility in the fall semester.

Their major concerns, according to Watts, centered around working students. "The summer session will not provide a good example of how students can adapt without serious conflicts," he said.

One specific concern was on the problems with existing three-and-one-half-hour lab sessions. With a four-day week, there could be insufficient time to hold the classes.

A compromise suggested by committee member E.T. Jones was to go to a four-and-one-half day week. In this way, full-time employees would work a nine-hour day, Monday-Thursday and until noon on Fridays. Classes before noon could still be held on Monday, Wednesday and Friday and leave more open areas to insert the long lab sessions.

## Gomberg protests decision

Barb Piccione

Paul Gomberg, assistant professor of philosophy, is protesting his second denial of tenure recommendation by UMSL. In a rally held March 28, Gomberg announced he felt the decision was racist and an "attack on the anti-racist movement."

According to Gomberg, his qualifications for tenure are above average and as adequate as those who have received tenure in the past. He feels the reasons for his denial are related to his membership in the Communist party, Progressive Labor Movement and also the Committee Against Racism (CAR).

"This is an attack on the Anti-Racist Movement," said Gomberg. The administration is seeking to stop the movement by getting rid of the leadership."

[See "Gomberg," page 13]



SPRING AT LAST: Students enjoying the warm weather at Bugg Lake after weathering a harsh winter [photo by Dale Nelson].

## Students select senators

Mary Bagley

The UMSL Senate recently held elections for student senators March 7, 8. The Senate, which is the principle governing body of the campus, consists of 25 students and 75 faculty.

There was much campaigning involved and students based their campaigns and reason for running on various subjects. A total of 39 students ran for the 25 positions, and a total of 512 ballots were cast, which is less than last year's voting turn-out.

Mike Karibian, who ran on the Student Action and Involvement League (SAIL) ticket, claims his work and views on Proposal Three, for a fee structure change, were responsible for getting him elected. Proposal Three favored \$30 per credit hour up to 12 hours and a

[See "Students," page 2]

## Curators consider proposal for land-use

Rick Jackoway

A \$13 million proposal for the education use of UM's Weldon Spring property was submitted to the Board of Curators.

The Board held their monthly meeting in Columbia March 23-24. The Board also reviewed the budgets for the next two years. The Gay Liberation Front, which the University has refused to recognize as a campus organization, held a demonstration after the meeting.

The Weldon Spring Land-Use Committee recommended that one or more of four proposed centers be initiated.

The four centers, to be located on the 8,000 acre tract, are an Environmental-Cultural Center, an Animal Behavior Study Cen-

ter, an Ecological Research Center and a Youth Agency Training Center.

The Board members called the proposal "extra-ordinary" and "far reaching," but they had doubts about implementation. UM President James C. Olson said he "had serious concerns about funding" for the project.

The Board unanimously adopted a motion, initiated by Olson, to re-open negotiations with the Missouri Conservation Commission to sell some of the land.

The Board broke off negotiations with the Commission September 9. Three weeks later the 13-member Weldon Spring Committee was formed.

Board President Rex Williams said with the Committee report and Commission negotiations the

Board is "now in a position to consider all possibilities."

The impact of the \$4.7 million University-wide reduction in the 1978-79 operating budget was reported to the Board's Finance Committee.

The UMSL budget cut, \$470,000, was the lowest of the four UM campuses. UMSL Chancellor Arnold B. Grobman, however, said to the Committee, "The cuts we have received have been extremely serious."

Major effects for UMSL are reported to be reduced course offerings, increased class size, elimination of one intercollegiate sport, reduced campus maintenance and library hours.

The deans have been advised not to fill vacancies with people on the tenure tract so those hired can be let go when the

cuts are made, Grobman said.

This practice is "closing the gate on young people's ability to get jobs," Grobman said.

Officials from the other campuses said the reductions have cut the University budget to the skeleton and "further reductions will cut into the bone."

The Finance Committee then approved guidelines for the planning of the University's request for the 1979-80 budget. The plans, which were approved by the full Board, will now go to the individual campuses for development.

The guidelines include authority to consider increasing student fees "to help absorb the inflationary impact on the University purchasing power." The guidelines were amended, by request of Grobman, to state

that a study of the student fee structure should be made.

Inflationary increases in salaries and funds for library improvements will be high priority items for the request.

Seven gay liberation demonstrators participated in a protest at a press conference after the meetings. The protestors carried signs and stated the university should recognize their organization.

The University has asked the U.S. Supreme Court to reconsider their decision not to hear the university's case against recognizing the gay liberation organization.

Williams said they are asking for the reconsideration, which the court seldom does, so the University can say "they have tried every available legal avenue."



## News briefs

### Practice LSAT offered

Pre-legal students, especially juniors, are urged to participate in the "practice Law-SAT" test to be given Saturday, April 15, in 100 Clark.

The questions, times allotted for test sections, and other details are planned to be as much like the real test as possible and a method of scoring the test is proposed.

Students are urged to register in advance, at the Information Desk of the Student Center. Because the size of the group must be limited, the rule is "first register, first served." The cost for registration is \$1.

This sample test is sponsored by the Department of Political Science.

### Group advising begins

The College of Arts and Sciences will begin group advising for undecided majors during the week of April 3. Those students who have not been assigned to faculty advisors may also sign-up for appointments. Sign-up sheets are available outside room 303 Lucas. Students who have been assigned to faculty advisors should make appointments with them in their respective departments.

Individual appointments are available upon request, in room 303 Lucas.

### Dance class begins

Learn the new moves in the "Slide," "Lock," and "Spank," at the Disco Dance class sponsored by UMSL Continuing Education-Extension Thursdays from 12:15 to 2:15 p.m., March 30-Apr. 27.

The class aims to build your self-confidence and personal style on the dance floor.

The instructor is Barb Jare Fozzard, North County's acclaimed "Disco-Rock Dance Doctor." Enrollment will be limited to 25 persons to insure personalized instruction.

The fee for the class, which will be held in room 218 of the Mark Twain Building, is \$10 for UMSL students, staff, and faculty, and \$12 for the general public.

For more information contact Clark Hickman of UMSL Continuing Education-Extension at (453)-5961.

### Self-esteem course here

A course to help parents learn how to build self-esteem in their children will be offered by UMSL, April 3.

"Building Self-Esteem in the Young Child" will help parents learn to recognize the developmental stages a child is entering and teach them appropriate parenting techniques to insure their children's optimum emotional development.

Parents will also be given tips on how to prepare themselves for each developmental stage, according to psychotherapist Betty Woods, instructor for the course.

The course will meet from 9:30 a.m. to 4:30 p.m. in the J.C. Penney Building on the UMSL campus.

The fee for the course is \$27.

For more information or to register contact Dave Klostermann of UMSL Continuing Education-Extension at (453)-5961.

### Student jobs available

Students who plan on returning to UMSL next fall and who are interested in on and off campus work-study jobs should apply in the Financial Aid Office, room 209 Woods Hall, before May 1.

Both part-time (up to 15 hours per week) and full-time (up to 40 hours per week) positions are available. A limited number of on-campus full-time positions are open for the first time.

To apply, students should complete the Summer Financial Aid Application and the 1978-79 Family Financial Statement. Students pre-registered for the Fall Semester will receive first consideration.

## Students

from page 1

flat rate of \$360 for credit hours above 12 per semester.

According to Karibian, one of the reasons he ran for a Senate seat was that he enjoys working in the Senate and he has had the experience of being on Central Council and is presently president of SAIL.

Gwen Luster, who ran with the Minority Student Service Coalition (MSSC), had a different reason for running. "When I attended the Senate meeting last semester, I was distressed that there was no interaction between faculty and students.

Students sat on one side and the faculty sat on the other." It doesn't appear to me that many of the faculty respect the student senators. I hope to be instrumental in changing this," said Luster.

Howard Neuman, an independent candidate, claims one of the reasons he ran was to get on the Senate Welfare and Grievances Committee so he could be beneficial in helping other students.

"Last year I had a problem with a professor in the business school. My case was brought before that committee and the committee ruled in my favor. I found students had rights too," said Neuman.


Twelve candidates were sponsored by SAIL, 11 by MSSC, one by the United Students Coalition, one by Fighting Spirit, while 15 independents ran.

The list of candidates who won Senate seats are:

Jeanne Grossman 219, Paul

Free 180, Donna Denner 179, Barbara Bufe 178, Amy Borgstede 177, Howard Neuman 170, Tom Beckermann 169, Cheryl Morgan 161, Gwen Luster 155, Hubert Hoosman 146, Bob Henslee 145, Carol Braun 144, Chris Henderson 144, Kelly Enderson 143, Gail Robinson 139, Debra Cunningham 135, Morris Levin 132, Vennie Davis 132, Terrence Sobo 132, Michael Karibian 129, James Baker 126, Howard Abernathy 124, Gayle Eichelberger 117, John Higgins 117 and Randall Cahill 116.

## BROOKDALE

Both  has moved! Shampoo, men and haircut & dry...

women! **\$7.00**

7711 CLAYTON ROAD • 727-8143

## FAMOUS BRAND

**25-50% OFF**

Suggested retail prices!

the **dud ranch**

Guys and Gals Casual Wear  
**FAMOUS BRAND OUTLET**

HOURS: DAILY 11 A.M.-6 P.M.  
FRI. TILL 9 P.M.

**781-4020**

2619 Big Bend - Maplewood - 1/2 blk. North of Manchester

PLUS  
S  
t  
u  
d  
e  
n  
t  
  
D  
i  
s  
c  
o  
u  
n  
t  
s

JEANS  
JACKETS  
VESTS  
BIBS  
SKIRTS  
CORDS  
SHIRTS  
TOPS  
SWEATERS  
JUMPSUITS



2619 Big Bend - Maplewood - 1/2 blk. North of Manchester



# Hounds

**"Unleashed" is released!**

You can't put a leash on music whose time has come.

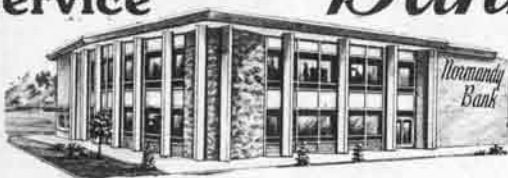
Hounds. Rabid fans throughout the Midwest scream their praises. And the madness is spreading.

Hounds. On Columbia Records and Tapes.

© Columbia. ® are trademarks of CBS Inc. © 1978 CBS Inc.

Your  
local  
full  
service

## Normandy Bank



#### CHECKING ACCOUNTS

Regular — personal, business, organizations  
Economy — personal

#### SAVINGS ACCOUNTS

#### CERTIFICATES OF DEPOSIT

#### MASTER CHARGE

#### AUTOMATIC CREDIT

#### LOANS — Personal — Auto

#### LOANS — Business

FINANCING — Autos, Boats, Trailers, Home Improvement

#### BANK-BY-MAIL — Postage Paid

#### CHRISTMAS CLUB

#### TRAVELERS CHEQUES

#### COLLECTIONS — Foreign/Domestic

#### SAFE DEPOSIT BOXES

7151 Natural Bridge  
St. Louis, Missouri 63121  
383-5555

A FULL  
SERVICE  
BANK

MEMBER FEDERAL DEPOSIT INSURANCE CORPORATION



## Speech department plans separation

Kathy Nelson

Unexpectedly high enrollment and rapid expansion in the speech communications degree program was reason enough for the UMSL Senate Committee on Curriculum and Instruction to approve the proposed creation of a separate speech communications department.

Speech communications Coordinator Denny Bettisworth said that the break from the English department had been planned when the degree program was initiated, though the break was set for a much later date.

"Our original plans projected fifty majors over a five-year period," said Bettisworth, "but after two and a half years we have 180 speech majors."

Along with increased enrollment, course offerings have been expanded in response to the diversified interests within the speech communications area.

"Originally, our curriculum was geared to our status as an English department 'ally,' but we've gradually been moving away with courses such as Radio Announcing and Stage Lighting, both of which were new offerings this year," said Bettisworth.

He also stated that two additional courses, Radio News and Theatre History, would be offered next fall.

Bettisworth said he realized this rapid expansion was unavoidable, and initiated plans for a separate Speech Communications department last sum-

mer. Since then, the plan has been approved by English department chairman William Hamlin, Arts and Sciences Dean Robert Bader, Arthur MacKinney, vice-chancellor of academic affairs, and the Senate Committee on Curriculum and Instruction.

"We really wanted to make the change before a fall semester, and so far, all has gone smoothly," Bettisworth said.

Although still under financial control of the English department, members of the speech faculty are housed in different offices, have their own secretary and operate and maintain their own office equipment.

"The English department kept two separate sets of books, and they have been very fair in our budgeting," he said. "Because of the free reign they've given us, we operate almost independently."

He did admit, however, that becoming a separate department had definite advantages.

"We will have an input for policy decisions in the UMSL administration," he said. "We will also exercise complete control over financial needs and allocations, though our budget will probably not increase significantly."

Bettisworth was quick to point out that the decision is now entirely in the hands of the Board of Curators, and none of the plans may be finalized until they approve the plan.

"Hopefully, we'll be able to make it official after the Curators' meeting in early May," he said.

# The verb is 'edit.'

# The noun could be you.

### Editor.

The word implies abilities and responsibilities. The person that fills such a role for the UMSL Current for the 1978-1979 school year will have to meet more than just a dictionary definition.

The position is open. And you could be the one to fill it.

If you believe you might have the background, and if you suspect you might have the motivation, your application is welcome.

Applications are, in fact, now being accepted.

The deadline for applications is April 4, 1978, at 5 p.m. Resumes and two samples of previous newspaper work should be submitted to 426 Woods Hall.

Interviews will be held April 7 with the Student Publications Committee of the UMSL Senate.

The editor will serve a term of office from July 1, 1978, to June 30, 1979.

If you happen to be the one filling that term of office, you'll be making your mark on the world while making your marks on the words.

The word is "edit." Just maybe you're the person to be doing it.

## CENTRAL COUNCIL ELECTIONS

APRIL 10 AND 11



Applications available at the Information Desk for the positions of President, Vice President and Representative.

Applications must be returned to the Information Desk by 4:00pm on Friday, March 31





# editorials

## Campus governance reorganization necessary

The recent elections held for the University Senate drew little attention this year. Snow-caused class cancellations in the middle of balloting did not help matters but the 500-plus votes cast by students was not an unusually low turnout for UMSL.

Low voter turnout in student elections is not uncommon, the national average is about 10 per cent of the student body at any given campus.

At UMSL the figures are generally lower than the 10 per cent. Although it might be said that UMSL students excel in apathy, there is probably a deeper reason for lack of interest in student elections. The bodies to which students are elected do not seem to be important.

The Senate, for example, is recognized as the "governing body" of the campus. That sounds impressive, but a look at its composition indicates why students might find voting for members of the Senate a useless exercise. There are presently 10 administrators, 75 faculty members and 25 students.

In the Senate, students have a voice in campus affairs, but a very feeble one.

The student government is another case of "form without substance." The term "student government" is a misnomer. It "governs" nothing, has few important responsibilities and no authority.

Central Council can, and at times has, been effective as a lobbying group, a catalyst for new programs and a valuable service organization. But these things have occurred in spite of, rather than because of the Council status of "student government."

Near the end of last semester and the early part of this semester, a disagreement between Chancellor Grobman and the faculty regarding the Center for Academic Development (CAD) raised the question of reorganization of campus governance. The faculty turned down the idea with little discussion — due in large part, no doubt, because the suggestion was made by Grobman.

Grobman made the suggestion originally because of the confusing structure (or lack of it) now in existence. The present governance system has grown with little direction or purpose. Stop-gap measures taken years ago to meet an immediate need continue to hang on, entrenched in tradition. The result is a lack of clear-cut responsibilities and lines of authority.

A reorganization is in order which would benefit all areas of the UMSL community.

In the first place, reorganization would clarify responsibilities and authority — a move necessary for the smooth functioning of the campus.

Secondly, reorganization could alleviate unequal representation of various segments of the UMSL community.

A possible reorganization proposal would disband the present Central Council and Faculty Council. Membership in a reorganized Senate would include a more equitable distribution of students, faculty and administrators and for the first time include staff members (which are perhaps the least considered sector of UMSL). Members of the various sectors would then compose membership of groups corresponding to Central Council, Faculty Council, and a new Staff Council.

Each group could handle the affairs directly related to its constituency and the full assembly could act on matters of common interest.

The benefits for such a plan seem obvious. Student government would finally have a direct line to general campus governance and hopefully a greater voice. The faculty would control and be able to pinpoint its rights. The staff would finally be able to have some input into decisions effecting its activities — input now nonexistent and sorely needed. And the administration would finally be able to organize itself and make decisions based on guidelines from a single coherent source.

## Curator Johnston bias threatens UMSL

In a situation where there are limited resources to be distributed competition between the campuses of the university system is sometimes intense. For the most part, no campus "wins" or "loses" and the four campuses stand together when necessary.

There is recognition of the fact that each campus has a stake in the success of the others.

Unfortunately, a situation now exists within the Board of Curators, the highest governing authority in the university, in which at least one member does not want each campus to succeed — specifically C.R. Johnston of Springfield seems to hold a grudge against UMSL.

He seems to want the campus to suffer for some reason.

Last semester at a Board committee meeting Jeanne Grossman, student body vice president reports that Johnston urged that a special academic enrichment fund not be established for UMSL because "all they do is sit and watch the Arch anyway."

The most recent example of Johnston's enmity for the campus came up in discussions regarding Weldon Spring.

The state legislature, upset over the university handling of the future of its Weldon Spring property, has threatened to cut \$1 million from the University budget.

Johnston said, according to a report in the Columbia Maneater, that he would propose that if a cut is made, the entire \$1 million should come from the UMSL campus.

The man obviously has an intense bias against this campus. He should not be sitting on the governing board of this institution. The Board of

Curators is supposed to be able to take a general view of the university and the needs of each campus. Johnston is apparently incapable of this.

C.R. Johnston should resign immediately so that the Board of Curators can more adequately govern the entire system.

### commentary

## Challenge IBM support for South Africa

Rick Jackoway

UMSL students and faculty are participating in a debate which has prompted protests throughout the country. Difficult decisions will have to be made by UMSL administrators in the near future.

American relations in South Africa is the issue and none has so affected campuses since the Vietnam War.

Up to 4,000 students protested at the Davis Cup Tennis Tournament between South Africa and the United States recently.

Over 350 students were arrested in several sit-ins in campuses throughout California. The students were protesting their campuses holding stock in companies which operate in South Africa.

At UMSL the protest is over the IBM corporation recruiting on campus. Recently a group, including members of the Committee Against Racism (CAR), met with UMSL Chancellor Arnold B. Grobman to discuss the situation.

The group said the IBM corporation supplies computers to the racist South African government and UMSL should not aid IBM in any way. Paul Gomberg, an assistant professor of philosophy at UMSL, compared IBM to the oven-makers in Germany during the second World War.

The group also complained of racist selection in the UMSL acceptance policy and in playing time for the basketball team.

Grobman rightly declined to commit himself on the IBM situation until the UMSL Senate, the policy-making branch of the administration, hears the issue.

On March 30, CAR will picket against IBM's recruitment on

campus. The picket is at 1:40 p.m. in front of Woods Hall.

CAR will then attempt to have the Senate approve a resolution prohibiting further recruitment by IBM.

Proponents of the resolution say any support of IBM is the same as supporting apartheid in South Africa. Opponents, however, say not allowing IBM to recruit on campus will make it more difficult for students to get jobs with that company.

While I do not regard myself as a member of CAR, I feel the Senate should recognize its duty, as an institution of higher learning, and not give UMSL support to any racist activity.

The banning of IBM may not prove crippling enough to wither IBM or South Africa, but passage of the resolution will show UMSL's concern for the situation.

While the Senate is considering the South African situation, it might be interesting for them to examine the 47 companies operating in South Africa which UM holds stock in. Washington University did and found one of their companies was convicted of selling weapons to South Africa.

### CURRENT UNIVERSITY OF MISSOURI — ST. LOUIS

Editor.....Bob Richardson  
Production Editor.....Genia Weinstein  
Business Manager.....Curt Watts  
News Editor.....Barb Piccione  
News Editor.....Earl Swift  
Features Editor.....Carol Specking  
Fine Arts Editor.....Mike Drain  
Media Editor.....Walt S. Jaschek  
Sports Editor.....Sam Smith  
Copy Editor.....Bev Pfeifer Harms

Photo Director.....Jeane Vogel-Franzi  
Assistant Photo Director.....Dale Nelson  
Art/Graphics Director.....Steve Flinchpaugh  
Advertising [sales].....Tom Ollva  
Advertising [production].....Walt S. Jaschek  
Steve Flinchpaugh  
Production Assistants.....Mark Hendel  
Dale Nelson  
Typesetter.....Donna Denner  
Assistant Typesetter.....Mary Hofer

The Current is published weekly during the semester in room 8 of the Blue Metal Building, 8001 Natural Bridge Rd., St. Louis, Mo. 63121. Phone [314] 453-5174.

Financed in part by student activity fees, the Current is published by a student staff and is not an official publication of the University of Missouri. The university is not responsible for the Current's contents and policies.

Editorials are the opinion of the editor and/or the editorial staff. Articles labeled "Commentary" are the opinion of the individual writer.

Advertising rates available upon request. Member, Missouri College Newspaper Association.

Letters to the editor are encouraged and should be typed, double-spaced. Letters under 300 words will be given first consideration. No unsigned letters will be accepted but names will be withheld upon request.

Letters may be submitted either to the Information Desk in the University Center or to the Current office, room 8 Blue Metal Building.



## letters

# Philosophy department protests Gomberg tenure decision

Dear Editor:

We the undersigned members of the Department of Philosophy wish to express our dismay at Chancellor Grobman's decision not to recommend Paul Gomberg

for tenure and promotion. We think it was reasonable to expect a different decision, based on the following information:

(1) Professor Gomberg has several scholarly articles and

three scholarly book reviews to his credit, all published or accepted for publication in respected professional journals. He also has several scholarly works in progress.

(2) Professor Gomberg's record as a teacher and adviser has been outstanding. He is consistently rated among the best in the department.

(3) Professor Gomberg has been an active participant in the University community, both in academic committees and through his anti-racist political activities. He has had a unique and positive influence at UMSL.

In view of this record, we are at a loss to understand the professional grounds for denying tenure and promotion to Professor Gomberg. In particular we

are concerned that this decision may have been influenced by opposition to his political activities. If you share our concern, we hope you will join us in seeking reversal of this decision.

David Conway

Edward Costello

Lawrence Davis

James Doyle

Peter Fuss

Robert Gordon

David Griesedieck

John Parks-Clifford

Stephanie Ross

Henry Shapiro

## Says U. Center wastes food

Dear Editor:

When I was young, my parents used to tell me to eat all of my vegetables because "there are people starving in India, and you waste good food."

There most certainly are people starving and not just in India. Yet, as the masses starve on, the UMSL cafeteria and snack bar throw away food that is left over at the end of the day or night.

I am an employee of UMSL Food Services and understand

that it is almost impossible to accurately cook enough food so that none will be left. There must be some way, though, to dispose of the food other than throwing it out. Sadly, this is a true "waste of good food."

Employees are not allowed to take the food home or to give it to friends because, in the past, some employees had been known to cook more than what was needed to supply customers with so they would have it to take home. This is the expla-

nation given by food services' personnel.

Unfortunately, this problem is not limited to UMSL Food Services but happens in restaurants, diners, cafeterias, bakeries, grocery stores and at home.

The problem is not just one of wasted food, either, but of values. Feeding a hungry person, once upon a time, would have been considered more important than preventing a thievery among employees. To some it still is.

Name Withheld

## Archives has Currents

Dear Editor:

I noticed in the classified ads

that a student is searching for the April 8, 1976 issue of the Current. This is to inform all students and staff that the Archives of the University houses most campus publications, including the back issues of the Current. The Archives is open 8:30-5:00 Monday through Friday, and is located in the Library, level 2.

M. M.

## Says card against regulations

Dear Editor:

If Central Council had explored the legality of the Student Buying Power Card I think they would have found the card to be in violation of University regulations. It is a shame that the University is being connected with this fraudulent scheme.

Stephen Platt

**Wow! Montezuma Snowblast with Fresca.  
The call of the wild.**

Over ice or snow add 1½ oz. of Montezuma Tequila, the Noblest Tequila, to delicious Fresca. It's a chiller!

©1978. 80 proof Montezuma Tequila. Distilled and bottled by Barton Distillers Import Co., New York, N.Y. \*Fresca is a registered trademark of the Coca-Cola Company.

## WE'RE TOPS.



And shirts, sweaters, pull-overs and neat cover-ups. To fit your jeans, your looks and your moods. At the Gap we have tops to fit everyone, so make yourself look tops. They're at the Gap.

the  
gap

Chesterfield Mall 532-1811  
Crestwood Plaza 968-2075  
West County Center 965-3332  
St. Clair Square 632-4486  
Jamestown Mall 355-3100  
Northwest Plaza 291-6888  
River Roads Plaza 869-2407



# Center seeks desegregation resolution

Thomas Taschinger

In February 1972, a black group called the Concerned Parents of North St. Louis (CPNSL) filed suit against the City of St. Louis Board of Education. The suit claimed a violation of the 14th Amendment to the Constitution, specifically the clause guaranteeing equal protection under the law for all citizens.

CPNSL charged that their children were segregated by race in certain public schools and weren't receiving as good an education as the white students in St. Louis.

Since that suit was filed six years ago, there has been much legal activity by supporting and opposing groups, but the St. Louis public schools remain segregated.

UMSL's Center for Metro-

politan Studies (CMS) has been studying the issue for nearly two years; working to resolve the desegregation issue and end the protracted legal proceedings.

Last month, in its most extensive effort to date, the CMS submitted a proposal providing for a negotiated settlement among the eight parties in the case.

So far, the response from some of the groups has been lukewarm, apparently because too many basic differences remain. In spite of this initial reaction, the CMS remains hopeful that time and money-saving mediation will be enacted.

Yet, according to Daniel Monti, an assistant professor of sociology and member of the CMS staff, some parties are resisting mediation for another reason.

"Some of these groups are still holding out for a victory in court," Monti said. "They believe they don't need to compromise when there's a chance they'll get everything they want from the court."

"If they do decide to negotiate the issue, the CMS would certainly be willing to be the mediator. But if they don't choose us there are a number of other public and private groups that could do the job. It's important that whoever is chosen has the approval of all the parties," said Monti.

"We never expected spontaneous agreement with our proposal," said Rich Patton of the CMS, "but so far the legal proceedings have cost an estimated \$2 million over six years. Since each party in the case has the right of appeal of any court finding, the affair could drag on

for several more years."

Patton, 30, is a senior research analyst working with the CMS out of UMSL Downtown. Patton and James Laue, director of the CMS, along with several other members of the CMS staff, prepared a 94-page summary of the case and the Center's proposal for resolution.

The proposal represents an impressive attempt by the Center to settle the issue. In the six-year life of the suit, a number of groups have entered or been drawn into the case.

The original plaintiff, CPNSL has been joined by the NAACP and the U.S. Justice department in seeking integration.

The original defendant, the St. Louis School Board, has been joined by the state of Missouri, the state Board of Education and the state Commissioner of Education. Two white South Side

groups opposing court-ordered desegregation, the Concerned Parents for Neighborhood Schools and the Involved Citizens Committee, were formed in response to CPNSL.

Last October, trial proceedings began under Judge James Meredith to determine if the St. Louis School Board has been guilty of unconstitutional segregation. The trial also seeks to formulate a solution if illegal segregation is determined. The trial has been in session periodically and is now in its tenth week.

"The CMS has always had reservations about a court-imposed solution," Patton said. "Many times such plans have met legal and constitutional requirements but neglected educational and political realities."

"People just seem to resent

[See "Center," page 13]



## Pitch in! Clean up! (Maybe even win some cash)

### Budweiser® Announces 1978 National College "Pitch In!" Week (April 10-16)

Get up a group and Pitch In! You can help improve the environment around your college and have a shot at one of five \$1,000 first place, five \$500 second place, or five \$250 third place educational awards, courtesy of Budweiser and ABC Radio.

Any college, university, or approved organization (fraternities, sororities, campus groups, etc.) is eligible to participate. Just return the coupon for rules and "Pitch In!" Week program kit.

Competition void where prohibited by law.

#### Pitch this in the mail!

To College "Pitch In!" Week Desk  
c/o ABC Radio Network  
1330 Avenue of the Americas New York, New York 10019  
Please Rush College "Pitch In!" Week program kit

Name \_\_\_\_\_  
College \_\_\_\_\_  
Address \_\_\_\_\_  
City \_\_\_\_\_ State \_\_\_\_\_ Zip \_\_\_\_\_  
Organization on Campus \_\_\_\_\_





features



COUSTEAU SHOW: Jean-Michel Cousteau, eldest son of noted oceanographer Jacques-Yves Cousteau recently gave a lecture and slide show at the Chase-Park Plaza Hotel entitled, "Man and the Living Sea." The presentation dealt with water-related issues, especially the destruction of the ocean environment.

Cousteau anticipates ocean as a future source of food

Thomas Taschinger

As the earth's population continues to increase at an alarming rate, many people look optimistically to the oceans as a future source of food that will save humanity from mass starvation. Ambitious talk about protein-rich shrimp farms, kelp beds and plankton factories appears in print with the regularity of the tides.

Yet the oceans, once thought to be a limitless, fertile resource, are now realized to be just as polluted and overused as many land areas. Since 1971, the total world fish-catch tonnage has been declining, even though the technology and number of fishing vessels has been increasing.

These were some of the points recently stressed by Jean-Michel Cousteau, eldest son of noted oceanographer Jacques-Yves Cousteau. Cousteau's son's lecture and slide show, entitled "Man and the Living Sea," was given March 9 at the Chase-Park Plaza Hotel.

His presentation gave many a preview of his return to St. Louis, for Cousteau is scheduled to appear at UMSL on April 19.

His talk on March 9 was the opening event of the day-long conference on March 10 sponsored by the St. Louis United Nations Association. The conference, "Waters of the World-Strategies for Use and Conservation," dealt with a variety of water-related issues. One of the main speakers at the forum was Elliot Richardson, chief U.S. negotiator at the U.N. "Law of the Sea" conference being held in Geneva this week.

"The American government," Cousteau said, "pours funds into education, social services and superhighways, but none of it will have any value if the environment is destroyed. As the great aviator and environmentalist Charles Lindbergh said, 'Preserving the environment is inseparable from maintaining our heredity itself. When it declines, humanity declines.'"

Unlike the offspring of many famous persons, Cousteau has no reason to feel lost in the shadow of his famous father. The younger Cousteau is an accomplished scientist in his own right specializing in architecture and oceanography. He has even occasionally combined these two seemingly divergent disciplines into such unified concepts as a proposal for a 1,000 square-foot floating island-city which could be utilized to ease overcrowding on land.

Last year the Jean-Michel Cousteau Institute was established on Hilton-Head Island off the coast of South Carolina. The institute engages in a variety of activities, such as hosting educational seminars, sponsoring scientific expeditions and producing documentary films.

Cousteau, 39, has been able to skin dive since he was seven years old when his father introduced him to the underwater world of the Mediterranean Sea off the French Riviera. In the ensuing 32 years he has noticed dramatic changes in the ocean environment.

"I want to show my own ten-year-old son many of the beautiful underwater sights I saw as a child," he said, "but I can't because they've been destroyed by pollution."

"Humans have a simple choice: We can live intensely, with great lust and then suddenly die, or we can exist more peacefully, reverberating to the basic music of life, in harmony with nature. My choice was made years ago," said Cousteau.

"The human race fought the environment for thousands of years. Now, in the 20th century, we can suddenly control it, even blow it up. We have to realize we must take care of it," he said.

One of the main points of Cousteau's talk was the interdependent structure of nature. In other words, everything is connected through the great chain of life; continents and lakes being parts of a whole, not entities in themselves.

"In 1972," he said, "the use of DDT was banned in the U.S. Americans were very pleased with themselves, as indeed they should have been. But the U.S. remains the largest producer of DDT in the world! It isn't used here, but it's exported and sprayed on the lands of Africa and Asia."

"Through the food chain and the flow of streams, rivers and

[See "Cousteau" page 8]

**JUAREZ**  
**TEQUILA**  
Rare...yet so well-done!  
It's prime rib Tequila at a hot dog price.  
GOLD OR SILVER  
IMPORTED & BOTTLED BY  
TEQUILA JALISCO S.A. ST. LOUIS, MO. 63101

14k Gold Chains & Bracelets & Rings  
\$26 \$15  
\$140 \$70  
\$100 \$50  
\$80 \$40  
\$60 \$30  
50% off  
Erlich's  
Indian Jewelry  
Westroads Mall; Clayton Rd. & Brentwood 863-6611

**INTRAMURAL ACTIVITIES BREWING**

**Upcoming Activities**

Activities	Deadline	Starting Date	days	Times
Softball Tournament [Men's and Women's Divisions]	April 14	April 23	Sunday	All day
Golf Tournament	None	April 14	Friday	All day

The Intramural Softball Tournament will be held this year at Six Flags Amusement Park. Participants are invited to bring along friends and refreshments and spend the entire day at the park. There will be special ticket prices for those who wish to enter the amusement section.

The Golf Tournament will be held at St. Charles Golf Course. No sign-up is necessary. There will be faculty/staff and student divisions. Scratch and Handicap scores will be kept.

**Racquetball Tournament Winners**

Advanced	Jim Velten
Intermediate	Tom Midden
Beginners	Tom Schiffhauer



# Cousteau

from page 7

oceans it is being brought right back here — tonight, at this very minute! What is being done in the Red Sea affects the Mississippi River eventually. Everything is connected," he said.

"For example," Cousteau said, "a medical doctor named Joseph Michener has been conducting scientific experiments under the North Pole. He has a pressurized chamber containing himself lowered through six feet of polar ice cap to a depth of 45 feet.

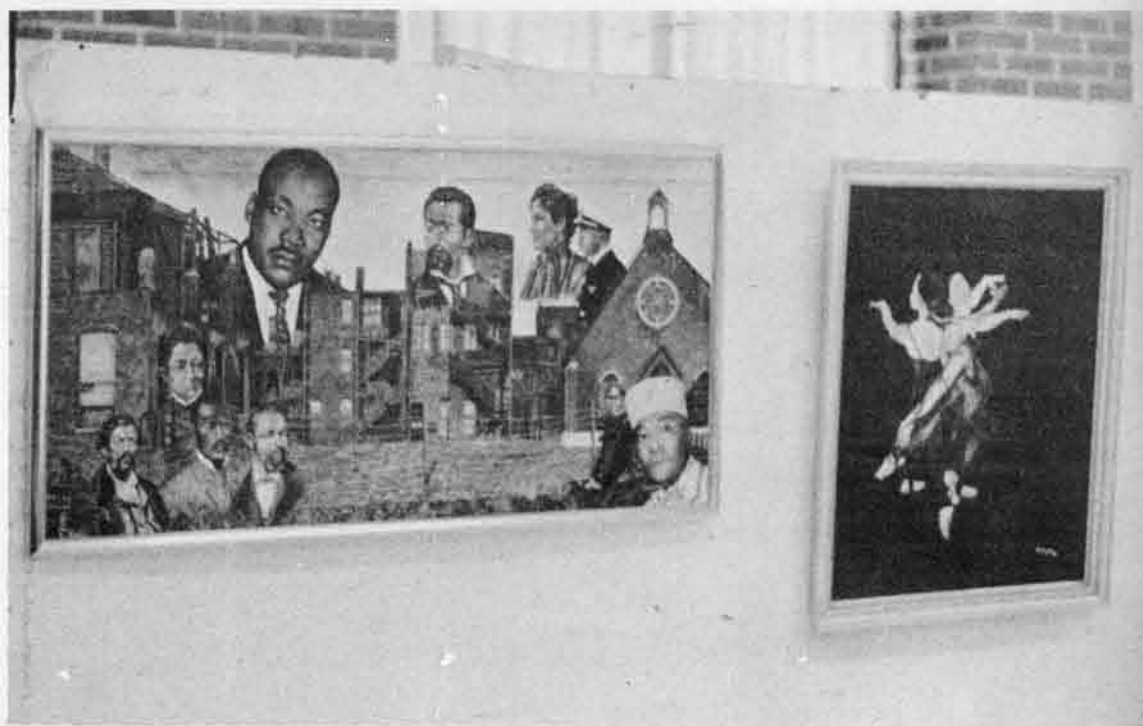
"No human being has even been there before. At this station he monitors the levels of lead, mercury and DDT in the sea water and marine creatures. the amounts are increasing yearly. But no human being ever put it there, under the North Pole hundreds of kilometers from civilization. It

arrived there from migratory animals, snow and rain fall and ocean currents. Everything is connected!" said Cousteau.

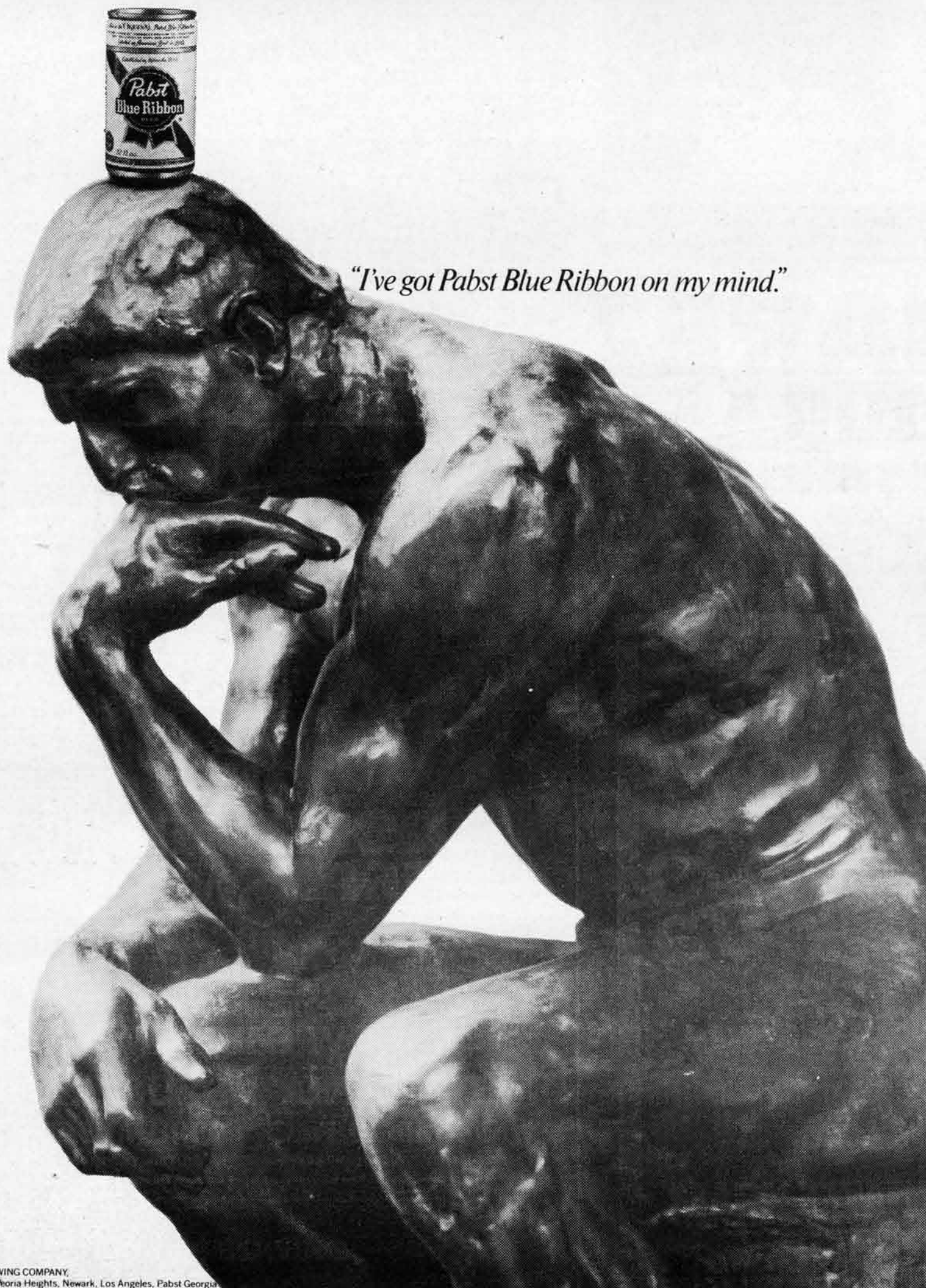
After his lecture Cousteau presented a slide show dealing with a field research site his institute has established on a Pacific island off the coast of northern New Guinea.

After his presentation Cousteau answered several questions from the audience. One dealt with the blue whale, the largest creature which has ever lived on earth.

"Some scientists think the blue whale is technically extinct," Cousteau said. "They estimate there are only about 500 of them left in the oceans of the world. That is too small a number to maintain adequate reproduction rates; they're simply scattered in a vast expanse of water. When the ones living now die off, that will be the end of the species."



**ART ON DISPLAY:** Black Culture Week offered students a chance to learn about black history. Paintings and other art objects were on display March 16 in the University Center [photo by Mary Bagley].



*"I've got Pabst Blue Ribbon on my mind."*

PABST BREWING COMPANY,  
Milwaukee, Peoria Heights, Newark, Los Angeles, Pabst Georgia



# around umsl

## March 30 - April 6

### thursday

**MEETING:** The UMSL Senate will meet at 3:15 p.m. in room 222 J. C. Penney.

**EXHIBIT:** There will be a Photo Exhibit of "Labor Unions at Work," in room 362 SSB from 8 a.m.-5 p.m. It's sponsored by the Center for Metropolitan Studies.

**EXHIBIT:** There will be an exhibition on Women Photographers in room 107A Benton from 9 a.m. to 5 p.m.

**FORUM:** The Central Council Grievance Committee is sponsoring an open forum today, where students can submit gripes or complaints. This will take place in room 155 U. Center at 11 a.m.

**MEETING:** The newly organized MPPA Student organization will meet in the UMSL Cafeteria at 7 p.m. All interested students are welcome to attend.

**KWMU-FM 91:** This public radio station owned by UMSL is airing a daily hour-long wrap-up of the Senate debate on the Panama Canal Treaties at 10 p.m.

**MEETING:** The German Club will meet at 12:30 p.m. room number to be announced in various classes.

**FORUM:** The University City Human Relations Commission presents a series of free public forums. The second in the series, entitled "The Schools and the Community," will be held at the Heman Park Community Center, 975 Pennsylvania Ave., at 7:45 p.m. The guest speakers are Irene Lober, Superintendent of Schools in U-City, and Kathryn E. Nelson, Chairperson, Development of Human Services, St. Louis Community College at Forest Park. For additional information call 862-6767 extension 236.

**EXHIBIT:** There will be a Photo Exhibit of "Labor Unions at Work," in room 362 SSB from 8 a.m. to 5 p.m. It's sponsored by the Center for Metropolitan Studies and this is the last day.

**DANCE:** Sigma Gamma Rho invites you to Boogie Night at St. Louis University Snack Bar from 9 p.m. to 1 a.m. Admission is \$1 for Greeks and \$1.25 for the public.

**FLICK:** "The Loved One" will be shown at 8 p.m. in the Rebstock Auditorium of Washington University. This film is sponsored by American & Foreign Classics.

**BASEBALL:** The UMSL Rivermen will fight head on with Moorehead State University on the Mark Twain Field at 1 p.m.

**MEETING:** Shirley Leflore, from St. Louis, will be presenting some of her works in poetry at 11:40 p.m. in room 318 Lucas. She is one of the few authentic oral poets working in America. She has a wide range of performance experience, including collaborations with jazz and gospel groups, actors, and dance. Her work draws on the Black oral traditions of the blues, the holler and the toast.

**TEST:** The Modern Language Aptitude Test for Intensive French will be issued at 2:45 p.m. in the Modern Foreign Language Department on the fifth floor of Clark Hall.

**FUND-RAISER:** The Student Association of Florissant Valley Community College presents Gary Brown of KADI and Ed and Alice of WJBM for an OLDIES - Rock 'n Roll Dance as a benefit for the Missouri Epilepsy Foundation. This will take place in the Flo Valley Student Center at 8 p.m. Admission is \$2 for Flo Valley Students and \$2.50 for the public. Tickets may be purchased at all Peached locations, Orange Julius - Northwest Plaza, the Sunshine Inn 8½ N. Euclid, and also at the door. Lots of prizes will be given. For more information contact Maureen Newsel at 771-1212.

**KWMU STUDENT STAFF - FUSION 91 FM:** 11 a.m. to 7 p.m. Saturday. Eight hours of Jazz and Jazz Rock. The Featured Artist for this week is Larry Coryell.

### saturday

**TEST:** The American College Test (act) will be given at 8 a.m. in rooms 120, 201 and 211 Benton.

**KWMU-FM 91:** This public radio station owned by UMSL is airing a summary of the past week's Senate debates on the Panama Canal Treaties at noon. These summaries are aired only if the Senate debate is open to the public.

For additional information call KWMU Radio on UMSL Campus at (453)-5965.

**JOURNEY:** Contemporary Productions are presenting "Journey" at the Kiel Opera House at 8 p.m.

**KWMU STUDENT STAFF - FUSION 91 FM:** Midnight 'til Morning on FM 91.

We start broadcasting early Sunday morning from 1 a.m. to 6 a.m. The featured Artist for this week is Bob Dylan.

**BASEBALL:** The St. Louis University Billikins vs. Bradley University at 1 p.m. on the Musical Field, Laclede & Channing Avenue. Admission is free.

**CONFERENCE:** Second day of the St. Louis University American Studies Program Spring Conference, "History, Cultures and Peoples of the Mississippi Valley." A discussion of black folklore and St. Louis history. Begins at 9 a.m. in the sesquicentennial Room of Busch Memorial Center 20 N. Grand, St. Louis University. Admission is \$6.

### sunday

**TEST:** The ACT will be given at 8 a.m. in room 120 Benton.

**BASEBALL:** The St. Louis University Billikins vs. Missouri University at 1 p.m. on the Musical Field, Laclede & Channing Avenue. Admission is free.

**CONCERT:** The University Orchestra will perform at 3 p.m. in the Mark Twain Building. Admission is free of charge.

**MEETING:** There will be a meeting of the Inter-Greek Council at 4 p.m. in room 308 Clark.

**MEETING:** Tau Kappa Epsilon will meet at 6:30 p.m. in room 217 Clark.

**MINISTRY:** The Grace Cathedral presents Rev. Angley at the Kiel Opera House at 8 p.m. For ticket information, contact the Kiel box offices.

**KWMU-FM 91:** Tune in to Creative Aging, a 60-minute program that features interviews and advice for retirees and retirees-to-be, at 5 p.m. This week's features are "Is St. Louis Weather All That Bad?" (George N. Brancato, 67, and his wife. He retired 1974 as Chief Meteorologist, U. S. Weather Bureau in St. Louis. Now teaches and operates a weather consulting service for business, industry and agriculture.) and "Help for Missouri Wildlife," (David Knisley, Educational Consultant, Conservation Commission of Missouri.)

**KWMU STUDENT STAFF - FUSION 91:** Sunday Magazine, 11 p.m., a public affairs program. Midnight 'til 6 a.m. music continues with the Unofficial Blues Hour and more.

**MUSIC:** A Chorus Line is being

presented by Frank Pierson at the Kiel Opera House at 8 p.m. For ticket information contact the Kiel box office.

### monday

**FLICK:** "Othello" will be shown in the J. C. Penney Auditorium at 8:15 p.m. Admission is free of charge.

**GALLERY210:** "F.64" is on display in room 210 Lucas from 9 a.m. to 9 p.m. This presentation also includes a lecture on Photography by members of the group "F64" sponsored by Willard Van Dyke.

**EXHIBIT:** There will be an exhibition on Women Photographers in room 107A Benton from 9 a.m. to 5 p.m.

**MEETING:** The NACA College Fair will meet in room 75 J. C. Penney at 8:30 a.m.

**MUSIC:** A Chorus Line is being presented by Frank Pierson at the Kiel Opera House at 8 p.m.

**KWMU-FM 91:** This public radio station owned by UMSL is airing a daily hour-long wrap-up of the Senate debate on the Panama Canal Treaties at 10 p.m. These summaries are aired only if the Senate debate is open to the public.

### tuesday

**FLICK:** "Khartoum" will be shown in the J. C. Penney Auditorium at 8:15 p.m. Admission is free of charge.

**GALLERY210:** "F.64" is on display in room 210 Lucas from 9 a.m. to 9 p.m.

**EXHIBIT:** There will be an exhibition on Women Photographers in room 107A Benton from 9 a.m. to 5 p.m.

**MUSIC:** A Chorus Line is being presented by Frank Pierson at the Kiel Opera House at 8 p.m.

**KWMU-FM91:** Again the hour-long wrap-up of the Senate debate on the Panama Canal Treaties will be aired at 10 p.m.

**FAIR:** The UMSL Women Faculty is sponsoring a book fair in the J. C. Penney lobby from 7 a.m. to 10 p.m.

### wednesday

**MUSIC:** D. J. Streiker will be in the University Center Lounge spinning the latest hit records from 11 a.m. to 3 p.m.

**GALLERY 210:** "F.64" is on display in room 210 Lucas from 9 a.m. to 9 p.m.

**EXHIBIT:** There will be an exhibition on Women Photographers in room 107A Benton from 9 a.m. to 5 p.m.

**MUSIC:** A Chorus Line is being presented by Frank Pierson at the Kiel Opera House at 8 p.m.

**KWMU-FM 91:** The hour-long wrap-up of the Senate debate on the Panama Canal Treaties will be aired at 10 p.m. These summaries are aired only if the Senate debate is open to the public.

**FAIR:** The UMSL Women Faculty is sponsoring a book fair in the J. C. Penney lobby from 7 a.m. to 10 p.m.

### thursday

**GALLERY 210:** "F.64" is on display in room 210 Lucas from 9 a.m. to 9 p.m.

**EXHIBIT:** There will be an exhibition on Women Photographers in room 107A Benton from 9 a.m. to 5 p.m.

**MUSIC:** A Chorus Line is being presented by Frank Pierson at the Kiel Opera House at 8 p.m. For further information, contact the Kiel box offices.

**KWMU-FM 91:** The hour-long wrap-up of the Senate debate on the Panama Canal Treaties will be aired at 10 p.m.

### CANDIDATES:

The Current will be offering a special advertising rate to students running in the April 10, 11 Central Council elections. Candidates for student body president, vice-president and Central Council representatives can advertise in the Current at a reduced price. Call the advertising department of the Current at 453-5174.

### friday

**MEETING:** The Honors Committee will meet at 2:40 p.m. in room 302 Lucas.

**EXHIBIT:** There will be an exhibition on Women Photographers in room 107A Benton from 9 a.m. to 5 p.m.

**MEETING:** The Accounting Club will have a guest speaker, Rick Kurtzeborn, and his topic is "Accounting for long-term government contracts." This will convene in room 121 J.C. Penney at 12:30 p.m.

**FLICK:** "Nasty Habits" will be shown at 8 p.m. in room 101 Stadler. Admission is \$1 with UMSL ID.

## classifieds

#### FOR SALE

For sale: 1972 Charger gold with full white top, full power and air, low mileage, new whitewalls, exhaust system and battery. \$1750, will accept cash or cash and \$400-700 car. Call 532-3445. Will show car at school by appointment.

#### SERVICES

Will tutor French. Mme. DuBois. 535-2616.

- Free Pregnancy Testing
- Out-Patient Abortion

CALL TOLL FREE  
Missouri:  
800-851-3130



1602 21st Street  
Granite City, Illinois 62040  
15 Minutes from St. Louis

**EUROPE**  
less than 1/2 economy fare

Call toll free: (314) 994-7744  
Guaranteed or see your travel agent  
Reservations © Unifair Charters Inc.

### Want to Teach?

Missouri has 50,000 jobs in 488 districts! Put your qualifications on every superintendent's desk for much less than postage. Write: Mo. Teachers' Register, P.O. Box 8533, Sappington, Mo. 63126.

#### HELP WANTED

**EXCELLENT MONEY-MAKING OPPORTUNITY.** Make good money part-time — campus representative needed for fun and easy way to sell product — no gimmicks — proven campus winner. Send your name, address, phone, school, year of graduation, and self-addressed stamped envelope to: Fantasy Productions, Inc. 23 Stone Ave. Ashland, Ma. 06721.

**EARN \$180 to \$480 per week** working at home in your spare time. For more information send a stamp along with your name and address to Mail Order Dynamics P.O. Box 14292 St. Louis, Mo., 63178.

**WORK IN JAPAN:** Teach English conversation. No experience, degree or Japanese required. Send long, stamped, self-addressed envelope for details. Japan-A93, 411 W. Center, Centralia, WA 98531.

Applications are now being accepted for Student Peer Counselor positions. Qualifications: 2.5 cum. G.P.A., work experience dealing with people or academic training in counseling or related field. Junior level or above. Call C.A.D. at 453-5194.

Feminine person, sales and clerical work, 25-40 hours per week, Foreign Car Parts, Florissant, Vince DiPiazza 831-1466.

#### MISCELLANEOUS

**YOU CAN BE A STAR.** We can show you how. Free information. SAS and Associates, Dept. 1, Box 16051, St. Louis, Mo., 63105.



# fine arts



**BACK TO JAZZ:** The preservation Hall Jaz Band will give a concert at 8:30 p.m. on April 8 in the J. P. Penney Auditorium [photo curtesy University Programming Board].

## 'Imagery of Rock' presents a multi-media experience

Mary Bagley

"The Imagery of Rock," a multi-media presentation organized and produced by Mike Ankelman, UMSL alumnus opened at the St. Johns Cinema, March 10.

The one hour and twenty minute program consists of a series of visuals blended together with rock music by a computer. The soundtrack for the four shows is played by a live rock band called Faustus. Faustus, a band not new to the St. Louis scene is known for their sophisticated rock music. The group is presently gathering material to cut their first album.

Three slides are shot simultaneously from the projection booth in conjunction with the songs played by Faustus. These short visuals included in their subject matter everything from

hang gliding to Upton Sinclair's novel, "The Jungle."

In the projection booth, a person works the computer board which is capable of making split-second changes for certain downbeats of the music.

"Instead of slides being just a backdrop for the band, there is an integrated unity between these two medias. 'The Imagery of Rock' is designed to show that good rock music as opposed to other forms of music has the ability to illicit vivid images," said Ankelman.

"I wanted to be in the position where I was doing what I enjoy most. I asked myself what I wanted to do most in life, and I came up with this. If my company doesn't work, I will try to get another job doing the same line of work," said Ankelman.

"The hardest thing in this

business is making contacts. The main purpose of this project is exposure. I have been thinking about doing a project like this for the last three years and it took me five months to put together this production," said Ankelman. "The production is not a graphic like Lasarium or anything else; you can't see anything like it in town."

## Jazz band to come

The UMSL Concerts and Lectures Committee will sponsor a performance by the Preservation Hall Jazz Band at 8:30 p.m., April 8.

The concert, performed by New Orleans musicians who have traveled the world playing the music they created decades ago, will be held in the J.C. Penney Auditorium on the UMSL campus.

"Jass," as it was originally called, is a creative mixture of marches, quadrilles, blues, spirituals and ragtime. It is music inspired by turn-of-the century street parades, saloons and riverboat activity.

The best traditions are to be enjoyed and few are more enjoyable than traditional New Orleans jazz as played by the artists who created this great sound — the Preservation Hall Jazz Band.

New Orleans jazz is different. Its' form is uncomplicated, but its' execution can be complex as each musician introduces his own free spirit into the concert. It is not Dixieland, it is not funny "straw hat" music, and of course it is unwritten. The tempo is a shade slower than that of other jazz forms.

Most of the Preservation Hall band members have played this music for more than 50 years, and it's a part of them. Their music, while dated in origin,

attracts enthusiastic fans of all ages. Indeed there are no greater foot-stomping, shouting fans than young people. And it's from the young that a long future for New Orleans jazz is assured. Young musicians from all over the world come to Preservation Hall to learn the techniques and patterns of this distinctive and human music.

These are the musicians who not only made musical history with New Orleans jazz, but are perpetuating it as well. It is alive and bouncing at ancient Preservation Hall in the French Quarter of New Orleans, where the band holds forth when it is not on tour.

When the band travels it brings the same vitality to this sweet -sad-gently-exuberant music. It is music born from the turn-of-the-century street parades and saloons, from the river boats and from the hearts of people who laughed and danced and cried. It's music played by men who worked the docks all day, but weren't too tired to blow their horns for most of the night.

Tickets are available at the University Center Information desk, or by mail through the UMSL Programming Office, 262 University Center, 8001 Natural Bridge Rd. Public admission is \$5.

WELCOME BACK FROM THE

# KWMU STUDENT STAFF

Sunday 1am

Artist of the week

The Bob Dylan Show

Friday 11 pm

Larry Coryell

FUSION '91

music  
music



**PRESERVATION HALL  
JAZZ  
BAND**

THE EFFECT UPON THE AUDIENCE IS DEVASTATING



"glistens with joy  
and zest"

**Saturday, April 8  
8:30PM**

J.C. Penney Auditorium

\$2.50 UMSL Students

\$4.00 UMSL Faculty & Staff

\$5.00 Public

TICKETS NOW ON SALE AT THE  
UNIVERSITY CENTRE INFORMATION DESK



# PROFESSIONAL SALES SEMINAR

Thinking about a sales job? Consider the career potential offered as a professional in the field of life insurance. We train our associates in the area of employee benefit planning, estate analysis, and tax and financial planning. Calvin L. Currinder, CLU, & Associates is offering a career seminar on Tuesday afternoon, April 4th, 1:45 to 3:30 in Room 78 of the J.C. Penney Building. We invite you to attend and participate. For reservations, please contact Mrs. Bruno in your Placement Office.

## WHILE THEY LAST GOODYEAR RADIALS



**\$28.50** plus \$2.03  
FET

Size RR78-15 (685-15)

fits many VW's and  
Volvos

custom tread Blackwalls  
Free Mounting

Tread pattern hours 8 - 5 weekdays  
may vary 8 - 1pm Sat

**CIRCLE TIRE INC.**

4009 GOODFELLOW (5 BLKS. S.  
OF HWY. 70)

**389-5050**



SINGING: Jackson Browne performs old and new songs in his recent concert at Kiel. His new songs are a celebration [photo by Tom Oliva]

## Browne concert a celebration

Lynette D'Amico

Last Thursday night during intermission at the Jackson Browne concert at Kiel Auditorium, I noticed a young dope-depleted kid stumbling up and down the aisles begging hand-outs from some of the overstocked patrons. When he reached my seat I only had some popcorn to offer, so he settled for a cigarette. "Hey, who was that singing before?" he asked. He was referring to the opening act of the concert.

I enlightened him: "That was Karla Bonoff."

His eyes struggled to focus as he lit his cigarette. "I knew it wasn't Linda Ronstadt," he commented, "but she was all right."

A very stingy judgement, but understandable, since Ronstadt recorded three of Bonoff's songs on her "Hasten Down the Wind" album. Comparisons

between the two women are perhaps inevitable when Bonoff sings the songs she wrote, but have become associated with Ronstadt's name. But since the release of her debut album and after her performance Thursday night, Bonoff conclusively demonstrated she is a commanding and impressive talent, deserving to be judged and recognized on her own merit.

Her songs of longing and love are poignantly expressed by her breathless and wistful, yet intense delivery. She is especially effective on bouncing, up-beat numbers, such as "I Can't Hold

gap.

Browne performed a number of old standards and favorites during the evening, including "Take It Easy," "Fountain of Sorrow," "Rock Me On the Water," "Doctor My Eyes," and "The Pretender."

The greatest response and loudest acclaim went to the numbers from Browne's latest album "Running On Empty." Before a backdrop of the new album cover Browne launched into "Running On Empty," followed by "Nothing But Time." The new songs are a musical celebration of the mythology and

*He let his music say it all,  
and there was no  
communication gap.*

On" and "Isn't It Always Love," but the crowd roared its approval most lavishly for the haunting and moving "Someone To Lay Down Beside Me." We knew it wasn't Ronstadt, but she wasn't missed.

Jackson Browne had few words for the crowd. He verbally unbent at one point to deliver an abrupt profane directive toward some rowdy fans, but that was about as far as he went in acknowledging his audience. He let his music say it all and there was no communication

mystery of Life On the Road, as originally set to words by Jack Kerouac, Tom Wolfe, all the way down that broken white line to Tom Robbins' hitch-hiking heroine Sissy Hankshaw.

Browne returned for an encore that was perhaps the epitome of all encores: "The Load-Out" combined with a rendition of the Zodiacs "Stay." There was no argument with the line, "But the only time that seems too short is the time that we get to play."

An experience in terror and suspense.

THE  
FURY

A FRANK YABLANS PRESENTATION  
A BRIAN DePALMA FILM  
THE FURY

KIRK DOUGLAS JOHN CASSAVETES CARRIE SNODGRESS  
CHARLES DURNING AMY IRVING ANDREW STEVENS  
Produced by FRANK YABLANS

Directed by BRIAN DePALMA Executive Producer RON PREISSMAN  
Screenplay by JOHN FARRIS Based upon his novel

Music JOHN WILLIAMS Soundtrack Album on ARISTA RECORDS & TAPES



© 1978 20th CENTURY-FOX COLOR BY DeLUXE



CHECK YOUR LOCAL NEWSPAPER FOR THEATRE LISTING

**Wash U Senior Students Assn. Presents:**  
**The Official Israeli Version of the Entebbe Raid**



Midwest Premiere!

Nominated for best Foreign Film

Cinema Shares, Irving H. Levin and Samuel Schuman present a Cinema Shares Production of a Menahem Golan Film "OPERATION THUNDERBOLT" with Klaus Kinsky, Yehoram Gaon, Sybil Danning, Assaf Dayan, Gila Almagor and Ark Lavi. Producers: Menahem Golan and Yoram Globus. Director: Menahem Golan. Art Director: Kuk Sender. Screenplay: Clarke Reynolds and Menahem Golan. Music: Don Seltzer. Editor: Don Heng. © 1977 A Cinema Shares International Release

**Thursday April 6**  
**Varsity Theatre 6630 Delmar**  
**7:15 & 9:30 P.M.**

**Advance Tickets \$2.50 (Adult admission \$3.00 at the door)**

**Tickets available at:**

**Edison Box Office**

**UMSL University Center Info Desk**

**SLU Busch Center Desk**



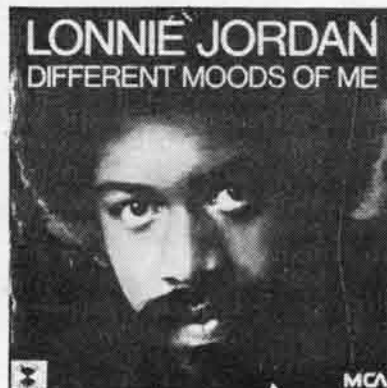
# DISCOUNT RECORDS PRESENTS

## A SPECIAL SALE ON THESE SMASH HIT ALBUMS

### FROM MCA RECORDS!



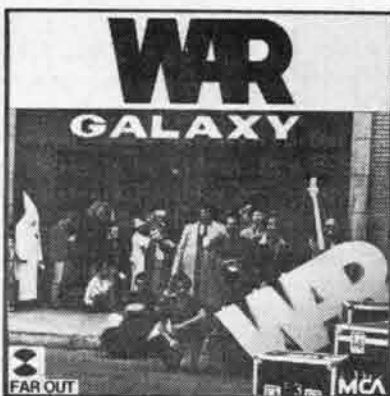
**3<sup>99</sup>**



**3<sup>99</sup>**



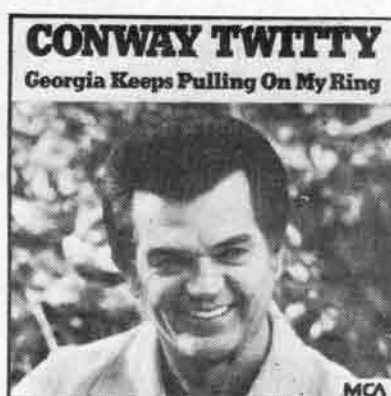
**4<sup>99</sup>**



**4<sup>99</sup>**



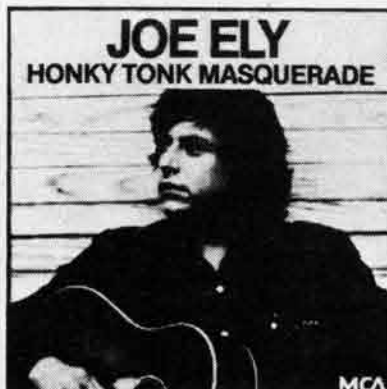
**3<sup>99</sup>**



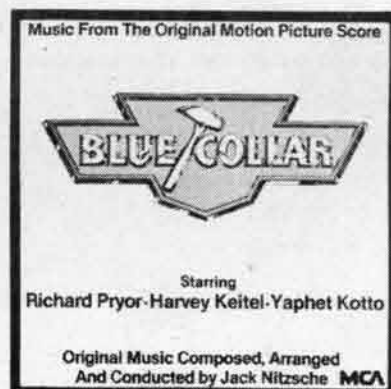
**3<sup>99</sup>**



**4<sup>99</sup>**



**3<sup>99</sup>**



**4<sup>99</sup>**

# discount records!

Charge it!



- 6 CRESTWOOD PLAZA
- 635 NORTHWEST PLAZA
- 7808 FORSYTH

968-2250  
291-2841  
727-1633

#### "NO QUESTIONS ASKED" RETURN POLICY

You will not have to fight and argue to exchange or return a record or tape at Discount Records. As long as you have your receipt, and the return is within 10 days — your wish is our command. If the

record is unopened, you may exchange it for any other similarly priced album. If the record is defective, we will gladly replace it immediately with another copy. No testing or arguments necessary.



## MEET THE CANDIDATES

The UMSL Current will sponsor a "Meet the Candidates" program on Monday, April 3, 1978.

Candidates for the positions of student body president and vice-president will speak on the issues and on their respective campaign platforms.

This special program will be held from 1:30 to 2:30 on the patio outside the U. Center. In case of bad weather, the program will be moved to the U. Center lounge.

This event is free and open to all members of the UMSL community.

## Center

from page 6

something imposed upon them by a judge," he said. "But under our proposal, all the parties will sit down together and work out the best possible solution. They'll be involved in it from the start and they'll understand why certain words of phrases are used or why a certain point must be stressed."

One sticking point in the affair is that St. Louis schools have never been technically determined to be unconstitutionally segregated by Judge Meredith's court. Even though pronounced segregation is an existing fact, the court cannot impose any solution until that "question" is settled.

"Prior to the historic

"Brown" decision by the Supreme Court in 1954, Missouri state law required all students be segregated by race. After "Brown," the St. Louis School Board moved to comply and for a long time city schools were much less segregated than those in many other cities.

Today of the city's 80,000 students, about 73 per cent are black and 27 per cent are white. This compares to an over-all city population which is 58 per cent white and 42 per cent black. The disparity in figures exists because 30 per cent of the white population is over 65.

In the early 1960's the student population numbered 115,000, but in the past few years the district has been losing about 3,500 students per year of both

racers. The black middle-class exodus to the suburbs is even greater than the more popularized "white flight."

Under the CMS proposal, once constitutional violation is determined, the various parties would be required by the court of participate in the mediation process. After a given time limit — perhaps 30 days — the Center would report its findings back to the court. Then the courts would study ways to implement the mutually-agreed upon resolution.

After six years of litigation with the very real possibility of several more years of appeals, the Center is hopeful that a closer look will be taken at its proposal.

## Gomberg

from page 1

he added.

Gomberg stated he has the support of his entire department and James Doyle, philosophy department chairman, believes, "We can only surmise that an unprofessional reason is at work."

The department voted unanimously to recommend Gomberg for tenure and is seeking a reversal of the decision.

In a letter to the Current, the department stated, "In view of his record, we are at a loss to understand the professional grounds for denying tenure and promotion to Professor Gomberg. In particular, we are concerned this decision may have been influenced by opposition to his political activities."

Gomberg's qualifications as outlined by the department, include publication of seven

scholarly articles and three scholarly book reviews, all published or accepted for publication in respected professional journals; an outstanding record as a teacher and advisor; active participation in the university community, both in academic committees and through his antiracist political activities.

In a letter to Doyle, Grobman stated the campus decision to deny tenure.

"Personnel matters are very carefully reviewed with considerable input from faculty and students. A responsible decision has been made and a recommendation is being sent to the president," said Grobman.

Grobman added many people have contributed to the campus decision.

Gomberg has plans to file a suit against the university if his tenure is denied.

## Senate elects Rea as new chairman

Rick Jackoway

Robert E. Rea, associate professor of childhood education, was elected chairman of the UMSL Senate on Mar. 16.

Rea ran against Charles Dougherty, professor of English, and received a majority of the 51 votes cast by the members of the Senate.

Rea will be chairman for one year when he takes over for Arthur Shaffer, professor of history, next August. Rea is

presently Senate parliamentarian.

Rea said afterwards he hopes the Senate will be able to grow stronger during the next year, but it was "too soon to have any certain policies."

Chris Henderson, an Arts and Sciences junior was elected Senate secretary by acclamation. She will take over for Bruce Baxter who graduates this year.

The Senate Committee on Committees, which appoints all

[See "Senate," page 18]

She laughs, she cries, she feels angry,  
she feels lonely, she feels guilty,  
she makes breakfast, she makes love,  
she makes do, she is strong, she is weak,  
she is brave, she is scared, she is...



an  
unmarried  
woman

20th Century-Fox Presents  
PAUL MAZURSKY'S

AN UNMARRIED WOMAN

starring

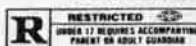
JILL CLAYBURGH ALAN BATES

co-starring

MICHAEL MURPHY CLIFF GORMAN

Produced by PAUL MAZURSKY and TONY RAY Written and Directed by PAUL MAZURSKY

Music BILL CONTI Now in Paperback from Avon COLOR BY MOVIELAB PRINTS BY DELUXE



Original Motion Picture Soundtrack Available on 20th Century-Fox records and tapes.



NOW SHOWING

CHECK YOUR LOCAL NEWSPAPER FOR THEATRE LISTING

BUSINESS  
AND  
ACCOUNTING  
STUDENTS:

Why just take any part-time job?

Choose employment that gives you the opportunity to grow into a career position.

Afternoon and weekend hours available; \$3.00/hour or commensurate with experience.

For more information, call the Personnel Department - 727-1000.

MARK TWAIN  
BANKS

Equal Opportunity Employer





# sports



GET 'EM UP: Baseball coach Jim Dix watches as his players prepare for the long season ahead. The Rivermen currently have a 5-6 record [photo by Sam Smith].

## Professional coaches softball

John Edwards

The UMSL softball team is starting their 1978 season with the St. Louis Hummers. Tonja Adreon, pitcher for the women's professional softball team, will be leading the Riverwomen, to a hopeful winning season, as their new coach.

With the weather forcing them inside, the women began their practice in late February. With the potential they are showing now, Adreon has high hopes of a

season paralleling last year which ended with a 13-5 record.

Coach Adreon sees no real problems with the team. The women show strength in both their batting and their fielding, with their only weakness in team work.

"We've got some new players and we have people in new positions," said Coach Adreon, "but the girls know what their final goal is and if they can learn to work together, we'll definitely have a worthwhile team."

With senior Pat Shelley and Liz Helvy controlling the outfield, Pat Connelly in the infield and with sluggers like Michelle Siemer and Nancy Cadenhead, the team is confident of many wins this season.

"The team has depth," said Adreon. "With the 16 people that we have to do the job, we're going to come out winners."

The team's next home game will be March 31 against Missouri Western at 3 p.m.

## Speed and pitching are Rivermen's keys

Vita Epifanio

With the snow finally melted and the baseball Rivermen completing an eleven-game road trip to Louisiana, signs of spring are here.

The Rivermen survived a week-long schedule of five double-headers and the stiff competition from the powerful New Orleans and Tulane teams. They returned home with a 5-6 record. Coach Jim Dix commented, "Considering that most of these southern colleges have already played 15 to 20 games, and we hadn't practiced or played on a true field, I think we did fairly well."

Analyzing the team's overall strengths in the early season, Dix believes good pitching, aggressive hitting and team speed are the team's assets. "Speed is our main asset. Our guys will steal a lot of bases," Dix explained. "We really don't have any power hitters. We're definitely a running team."

Presently, Dix cited defense as a problem. He said, "Defense hurt us the most in our losses, but a lot of that has to do with the new faces in the infield and their lack of experience."

Outstanding prospects for the season include righthanded pitchers John Van Esler and Bruce Oelkers and southpaw Rick Tibbles. Though none are really the strikeout sort, all possess live arms and fine

control.

In hitting, senior Jim Winkelmann and juniors Grayling Tobias and Greg Ready will likely be the hitting stars. In fact, both Ready and Tobias were honorable mentions in last year's All-American team.

In the field, centerfielder Tobias and shortstop Skip Mann are the outstanding defensive players. Especially in the recent trip, both were very steady. According to Coach Dix, both can be considered fine prospects.

This year's team is definitely filled with some outstanding talent, but the thinking ability of these players can't be overlooked. Coach Dix commented, "What separates good players from outstanding ones is that the outstanding ones use their heads; they think and take advantage of their strengths. They try to improve their weaknesses."

With a long and tough season ahead, the Rivermen will face many powerful teams. Though UMSL is considered a Division II school, they will play over thirty per cent of their games with Division I teams such as SIU-Carbondale, University of Missouri-Columbia and St. Louis University.

However, Dix is anticipating a fine season this year. With most of the players returning from last year's impressive

[See "Baseball," page 15]

## Is it sick to love a pen?

Is it crazy to love marker pens that give you the smoothest, thinnest line in town...and feel so right in your hand? Is it mad to worship pens with clever little metal "collars" to keep their plastic points from getting squishy?

Not if the pen is a Pilot marker pen.

Our Razor Point, at only 69c, gives the kind of extra-fine delicate line you'll flip over. And for those times you want a little less line, have a fling with our fine point 59c Fineliner. It has the will and fortitude to actually write through carbons.

So, don't settle for a casual relationship. Get yourself a lasting one, or two, to have and to hold...at your college book store.

Pilot Corp. of America, 30 Midland Ave., Port Chester, New York 10573.



**PILOT**

fineline marker pens

*You'll never write so fine*

Available at:

**UMSL Bookstore**



## The Navy's Nuclear Power Program.

**Not everybody can get into it.**

This year, we will choose a select number of top college graduates for our Nuclear Power Program. And naturally, we want to give every qualified man a fair chance of being considered. So, we urge you to act quickly.

The first thing you should know about the Navy's Nuclear Power Program is that it is probably the most comprehensive training available in the nuclear field.

It is also the most rigorous.

It's got to be. The majority of our country's nuclear reactors are operated by Navymen. And since we expect you to begin work as quickly as possible, it is an accelerated program.

The hours are long. The course difficult.

What's more, in order to qualify,

you must have a solid background in engineering, math or physics. And have what it takes to be an officer in the U.S. Navy.

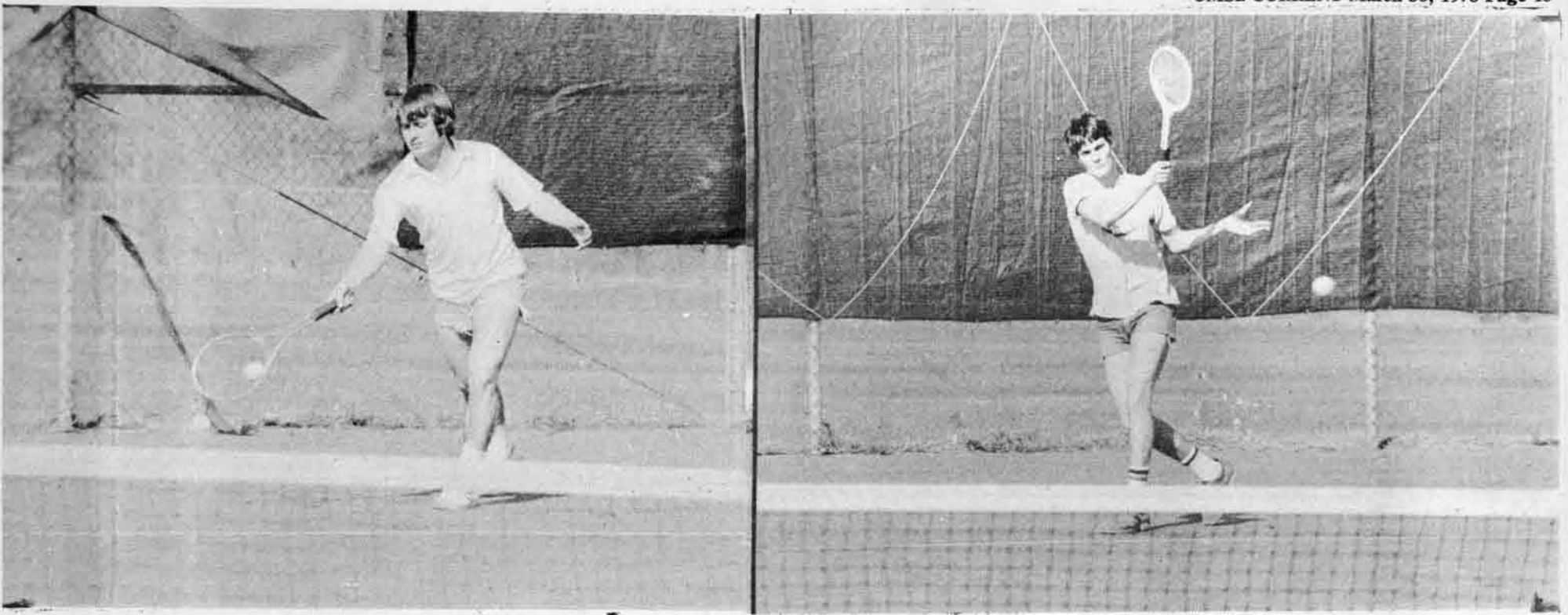
You must also be a man with a unique sense of dedication. For, once you have completed our program, you could be in charge of the supervision, operation and maintenance of a division of the reactor plant on one of our nuclear-powered ships or submarines.

You've studied and you've worked. Now make it all mean something. Find out more about the Navy's Nuclear Power Program from our Officer Programs Officer when he visits your campus.

For further information, see your placement office or call us collect at: (314) 268-2505.

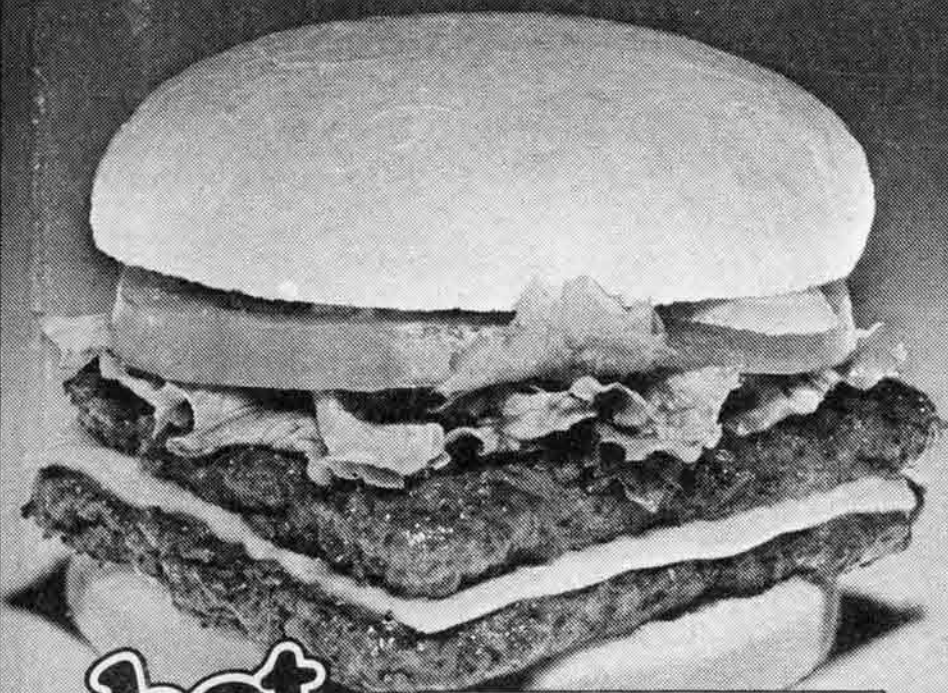
**The Nuclear Navy.**





RETURNING AGAIN: UMSL's Bob Stridler, left, and John January, right, are just two of the tennis team's talents. The team got off to a good start by defeating Northeast Missouri State, 7-2 [photos by Sam Smith].

When the  
meat's real juicy,  
the more you add  
the better it tastes.



hot  
n.  
juicy

Wendy's  
OLD FASHIONED  
HAMBURGERS

8219 S. Florissant Rd.  
Across from UMSL Campus

Copyright © 1977 by Wendy's International, Inc. All rights reserved.

## New tennis coach, new tennis season

Paul Adams

The men's tennis team started their season on a winning note by defeating Northeast Missouri State by a 7-2 score. New coach Randy Burkhart inherited a squad that finished with a 3-10 record last season.

Burkhart commented, "We expect to do good this year. Team spirit is good, we've got good players and the team should easily improve last season's record. We played a strong match against Northeast and it certainly showed that this team has potential."

Singles winners in the match were Bob Striler, John January,

Guy Knapp, Al Wolk and Ken Schroeder. Doubles winners were Ken Schroeder and Al Wolk, and John January and Ken Helm.

The team has a squad this year composed of four freshmen, three juniors and two seniors. If the freshmen play consistently good tennis, then the team is well on its way to a winning season; otherwise, the team may have some troubles.

Coach Burkhart remarked, "Our meet against the University of Tennessee-Martin (March 31) will be our first test of the season, we expect them to be tough."

The meet against Tennessee will begin at 2 p.m. at UMSL.

## Baseball

from Page 14

team, which placed fifth in the World Series, he is shooting for the national championships.

"I expect 100 per cent from them and am hoping they can play the best they can," he said.

"They are capable of doing it. With a little luck and a few breaks, we can do it."

Their first home game of the season will be on March 31 against Moorhead State University at 1 p.m.

Year after year, semester  
after semester, the  
CollegeMaster® from  
Fidelity Union Life has  
been the most accepted,  
most popular plan on  
campuses all over America.

Find out why.

Call the Fidelity Union  
CollegeMaster®  
Field Associate  
in your area:

Bruce Weston  
Kin Lavender  
Judy Nu Delman  
Pauli Hedg-peth  
Bill Loeschner



CollegeMaster® 371-4444

CLIP COUPON  
ONE FREE HAMBURGER PER COUPON



**FREE  
HAMBURGER**

Now at Wendy's Old Fashioned Hamburgers this coupon entitles you to a free Single Hamburger with the purchase of a hamburger of any size. Offer expires...

April 16, 1978

Not valid with any other coupon  
Cheese or tomato 10¢ extra  
PRESENT COUPON WHEN ORDERING

CLIP COUPON  
ONE BOWL CHILI PER COUPON



**20¢ OFF  
CHILI**

Now at Wendy's Old Fashioned Hamburgers this coupon entitles you to 20¢ off Wendy's rich, meaty Chili. Offer expires...

April 16, 1978

Not valid with any other coupon  
PRESENT COUPON WHEN ORDERING

CLIP COUPON  
ONE ORDER FRENCH FRIES PER COUPON



**15¢ OFF  
FRENCH FRIES**

Now at Wendy's Old Fashioned Hamburgers this coupon entitles you to 15¢ off an order of French Fries. Offer expires...

April 16, 1978

Not valid with any other coupon  
PRESENT COUPON WHEN ORDERING



## Women show promise, talent

Vita Epifanio

This season's tennis team coached by Carol Gomes shows great promise and enthusiasm. For one, this is the first season that full-time coach has been hired for the women's tennis program.

In the past, Women's Sports Coordinator Judy Berres Whitney has had to take this load along with her many administrative duties. "Secondly, with a full-time coach, I am dedicating my time to help them. It shows them that someone really cares," she said.

Analyzing strengths and weaknesses in this year's squad, Gomes included several promising notes. She remarked, "I feel our strongest points include exceptional ground strokes and consistent backcourt play."

When asked what weaknesses exist, she conceded net play could be improved as well as the lobs.

Promising hopefuls include seniors Christy Cone, Jeannine Marschner and Irene LaRoco. All of the girls display tremendous ground strokes and consistent serves. They will likely be the top singles candidates.

Other hopefuls include junior Cheryl Hafer and freshman Kim Valentine. As a graduate of Parkway Central, Valentine first played singles as a senior. She will probably be an important mainstay in coming years.

In doubles play, there are no set matchups. It can change from match to match. Gomes explains, "This season I am controlling the match schedules by employing ladder tournaments during practice. In es-

sence, the girls will determine their own status through these practices." She added, "This is one good way to challenge their abilities and make them want to be better."

After a dismal record of 2-8 last season, Gomes anticipates a turn-around. She commented, "I see many hopeful signs. Particularly our singles play, should be strong. It will depend largely on their consistency and effort."

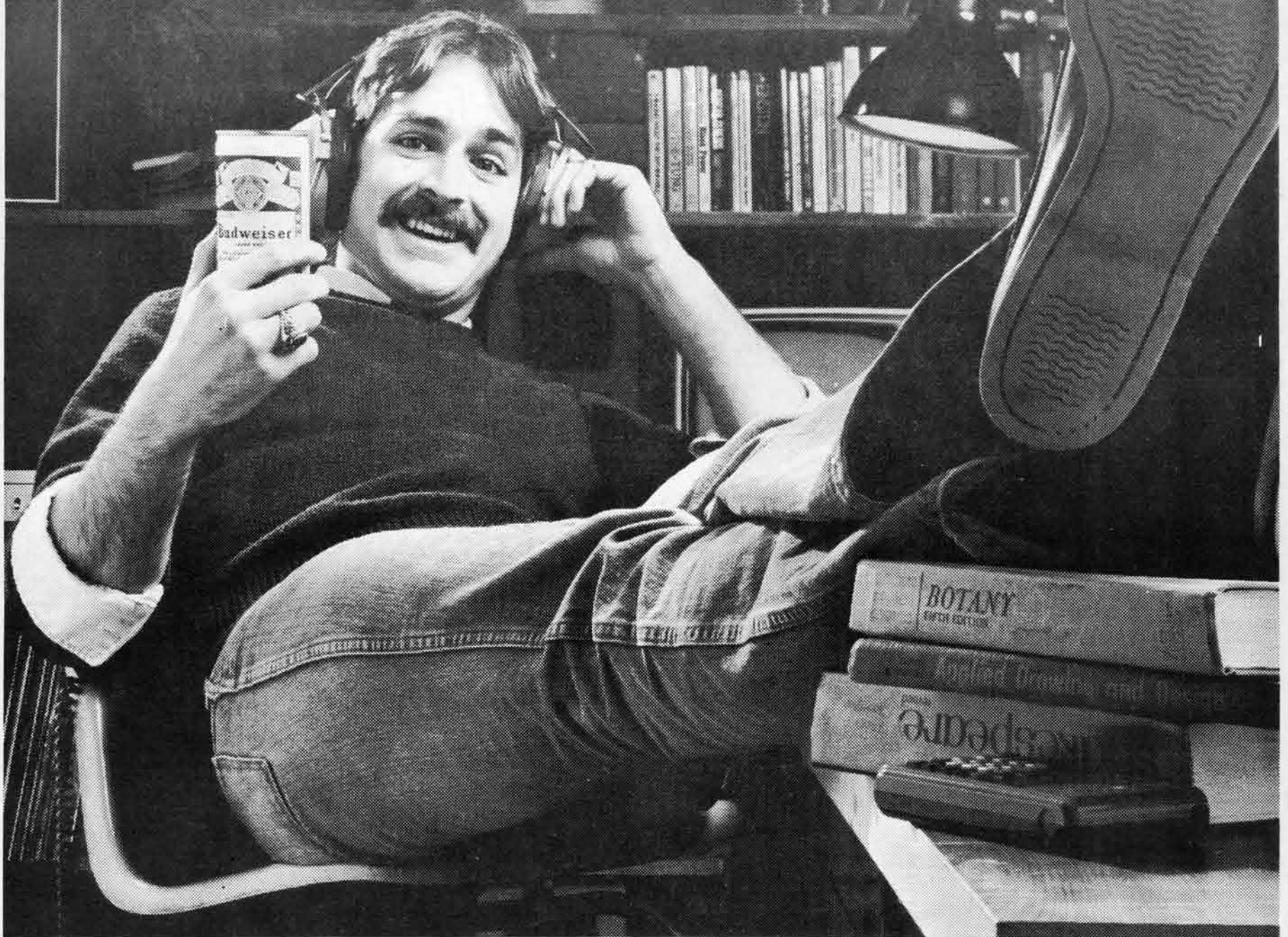
In their first match against Evangel College, the tennis team played very impressively, defeating Evangel 6-3. In singles play, first singles player Cone defeated Tracy Finn in straight sets, 6-0 and 6-1. Other winners were Hafer, LaRoco and Janet Ossic.

In doubles play, Cone and [See "Tennis," page 17]



NET RESULTS: First singles player, Christy Cone, practices her net game [photo by Sam Smith].

# When the bookin's behind you...



# Budweiser®

KING OF BEERS • ANHEUSER-BUSCH, INC. • ST. LOUIS



# Sports' schedules

## Baseball

Date	Opponent	Site	Time
Fri., March 31	Moorhead State Univ. (2)	UMSL	1:00 p.m.
Sat., April 1	Illinois Wesleyan (2)	UMSL	noon
Sun., April 2	Illinois Inst. Of Tech. (2)	USML	1:00 p.m.
Tues., April 4	SIU-Edwardsville (2)	UMSL	1:00 p.m.
Wed., April 5	Greenville College (2)	Greenville, Ill.	1:00 p.m.
Sat., April 8	St. Louis U. (2)	SLU	1:00 p.m.
Tues., April 11	Southwest Mo. State (2)	UMSL	1:00 p.m.
Sat., April 15	Quincy Tournament	Quincy, Ill.	
Sun., April 16	Quincy Tournament	Quincy, Ill.	
Tues., April 18	Washington U. (1)	UMSL	3:30 p.m.
Wed., April 19	SIU-Carbondale (2)	Carbondale, Ill.	1:30 p.m.
Fri., April 21	Western Ill. (2)	Macomb, Ill.	3:00 p.m.
Sat., April 22	Western Ill. (1)	Macomb, Ill.	1:00 p.m.
Sat., April 29	Southeast Mo. State (2)	Cape Girardeau, Mo.	1:00 p.m.
Tues., May 2	McKendree College (2)	Lebanon, Ill.	1:30 p.m.
Wed., May 3	Missouri University (2)	Columbia, Mo.	2:00 p.m.
Sat., May 6	Eastern Illinois (2)	UMSL	1:00 p.m.
Sat., May 13	Indiana St. TH (2)	Terre Haute, Ind.	2:00 p.m.
Mon., May 15	Missouri Baptist (2)	UMSL	1:00 p.m.

## Softball

Date	Opponent
March 29	St. Louis University (2)
March 31	Missouri Western
April 1	Eastern Illinois
April 4	Southeast Mo. State (2)
April 6	Principia
April 8	William Woods (2)
April 14-15	SIU-E Tournament
April 17	SIU-E
April 21	Indiana State (2)
April 24	UM-Columbia
April 27-29	MAIAW

Site	Time
UMSL	2:00 p.m.
UMSL	3:00 p.m.
UMSL	2:00 p.m.
Cape Girardeau, Mo.	4:00 p.m.
UMSL	3:30 p.m.
UMSL	1:00 and 3:00 p.m.
Edwardsville, Ill.	TBA
UMSL	4:00 p.m.
UMSL	3:00 p.m.
Columbia, Mo.	2:00 p.m.
Springfield	TBA

## Tennis

from page 16

LaRoco defeated Finn and Sandra Peterson by the score of 6-3 and 6-4. The third doubles team, Susan Franklin and Ossie, defeated Sue Wheller and Tracy Boy by the score of 6-4 and 7-5.

Their next scheduled match is April 5 against Southeast Missouri State at UMSL, at 3 p.m.

## Golfers seek golfers

The UMSL Golf Team is looking for people to participate in the 1978 golf season.

Any student interested in trying out for the upcoming season should contact Andy Smith at (453)-5641 or 946-7160 immediately.



# NOW!

## 9 Routes to UMSL



Visit Information Desk  
or Call 5148

**THERE IS A  
DIFFERENCE!**

OUR  
40th  
YEAR

PREPARE FOR  
MCAT  
LSAT · GMAT  
GRE · VAT · DAT  
OCAT · SAT  
NAT'L MED BDS  
NAT'L DENT BDS  
NURSING BDS  
ECFMG  
FLEX  
VQE

**Stanley H.  
KAPLAN**  
EDUCATIONAL  
CENTER

TEST PREPARATION  
SPECIALISTS SINCE 1938  
L.S.A.T.

July classes

Starting in May

Call Days, Even & Weekends

[314]-997-7791  
8420 Delmar  
Suite 301  
St. Louis, Mo. 63124  
CALL TOLL FREE  
800-223-1782



# Athletes compete for charity

Curt Watts

Pi Kappa Alpha fraternity's first annual Collegiate Superstars Competition was held at UMSL's Mark Twain Fieldhouse on Sunday, March 12. Jerry Boehmer, winner of the contest will be accompanied by second place finisher Sam Schropp to Eastern Illinois University in early May to represent UMSL in the regionals.

## Shuttle service growing

Cindy Ludemann

At least 30 student participants from each area are needed before UMSL will establish shuttle bus services next fall between the campus and St. Charles County and its surrounding areas; Southwest County; and North St. Louis County.

Before June, UMSL students living in these areas will be computer-identified and then contacted by mail to determine student interest. Those students participating in the program will receive a laminated bus pass which can be shared with friends having opposite schedules.

The tentative route for the North St. Louis County area originates at Cross Keys Shopping Center, travels south along New Halls Ferry Road, west on Lucas and Hunt Road to UMSL on Natural Bridge.

The price of the service in each of these areas will be calculated according to distance.

For price comparison, the university-operated Chesterfield shuttle bus pass costs \$70 per semester, 89 cents per day. There will be no bus stop shelters and the buses will not be air-conditioned but the service will be reliable regardless of weather.

Persons needing additional information can contact Rick Blanton, director of student activities, at (453)-5536.

## Senate

from page 13

other committee members, was also elected. The Committee is composed of three students and seven faculty; one faculty member from each school is required.

The students are Mike Karibian, sophomore; Jeanne Grossman, sophomore; Barbara Bufe, senior.

The faculty are Arnold Goessl, modern languages; Jane Williamson, English; Harold Turner, education; Emilio Pagoulatos, economics; Fred Wilke, mathematics; Charles Kuehl, business; Charles Fazzaro, education.

Boehmer was sponsored by Athlete's Foot stores and represents Pi Kappa Alpha. Delta Zeta sorority was represented by Schropp who was sponsored by St. John's Distributing Company — Miller Beer.

The event, held to raise funds for the fraternity's national charity project Big Brothers/Big Sisters of America, netted over \$650 through athletic sponsorships and voluntary donations.

These funds will be deposited in a special holding fund controlled by a board comprised of representatives from the national fraternity and BB/BSA said Jerry Utterback, coordinator of the project.

"It is intended to be used for new projects rather than day-to-day operations," he said.

Twenty-five per cent of the funds have been specifically designated for use by the St. Louis agency of BB/BSA.

Participating in the competition were eight UMSL students.

In addition to Boehmer and Schropp, the participants were Steve Kirschner sponsored by Athlete's Foot; Tom Lucas, sponsored by St. John's Distributing Co.; Ed Gaines and Bob

Novelly, sponsored by Silver Maple Farms; and Jan Wall and Laura Ruhrwein, sponsored by the St. Louis Board of BB/BSA representing Alpha Xi Delta and Zeta Tau Alpha sororities respectively.

Boehmer took an early lead in the competition with first place finishes in the bicycle race around campus and frisbee toss. His second and first place finishes in the free-throw shooting and half-mile run respectively, clinched the title.

Schropp finished first in the 100-yard free-style swim and the obstacle course. Hitting 80 per cent from the free-throw line, out of 15 shots, the winner of the free-throw shooting was Ed Gaines.

Utterback said, "It ran really well although somewhat ahead of schedule. We were surprised since we had anticipated several events to take much longer than they actually did."

Jan Peake, Executive Director of the St. Louis agency was on hand to present the winners' trophies and thank the participants.

## 10th Annual Evening College Council Dinner Dance at



### Schneithorst's Hofamberg Inn

April 15, 1978 7:00 p.m.

**Featuring: Summit**  
Tickets available (on a first come, first served basis) at: the Univ. Center Info. Desk; Eve. College Coffee Klotch; through the Eve. College Office  
**Admission: \$5/person for dinner & entertainment**  
Set-ups free - B.Y.O.B.  
Semi-formal

## Where astrology ends... Biorhythms begin.

Pre-determine your better days for making business decisions, learning new things, or improving your romantic efforts, by knowing your BIORHYTHMS.

More than 500 major companies presently use BIORHYTHM CHARTS to increase efficiency and reduce margins for error. Now, this statistically formulated method of alerting you to your future feelings is available at a very minimal cost.

You will receive a computer print-out for each month of the year, pre-determining your biological fluctuations. Three tracts are charted: emotional, intellectual, and physical. Being able to pre-determine one of these tracts is worth the cost! In addition, you will receive interpretations of the best way you should respond to your biological conditions.

Improve your love life by sending for your mate's BIORHYTHM CHART along with yours.

Improve your working relationships with your boss by knowing his BIORHYTHM fluctuations.

**Have the POWER to PREDICT the physical, emotional and intellectual vibrations of OTHERS and YOURSELF.**

Please send me \_\_\_\_\_ BIORHYTHM CHARTS for one year. If I am not totally satisfied after three months, you will return my money, no questions asked.

Name(s) \_\_\_\_\_

Birth Date \_\_\_\_\_ Month \_\_\_\_\_ Year \_\_\_\_\_

Birth Date \_\_\_\_\_ Month \_\_\_\_\_ Year \_\_\_\_\_

Return to: (Name) \_\_\_\_\_

Address \_\_\_\_\_

City & State \_\_\_\_\_

Zip Code \_\_\_\_\_

Cost: 1 — \$10.00

2 — \$18.50

3 — \$27.00

Check enclosed

Mail to: Pharmaceutical Chemists & Consultants  
P.O. Box 215, Highland, IL 62249

**LIFE CAN BE BEAUTIFUL WHEN YOU KNOW WHAT TO EXPECT.**

Want to spend this summer sailing the Caribbean? The Pacific? Europe? Cruising other parts of the world aboard sailing or power yachts? Boat owners need crews! For free information, send a 13 cent stamp to Skoko, Box 20855, Houston, Texas 77025