

8-31-1989

Current, August 31, 1989

University of Missouri-St. Louis

Follow this and additional works at: <http://irl.umsel.edu/current1980s>

Recommended Citation

University of Missouri-St. Louis, "Current, August 31, 1989" (1989). *Current (1980s)*. 282.
<http://irl.umsel.edu/current1980s/282>

This Newspaper is brought to you for free and open access by the Student Newspapers at IRL @ UMSL. It has been accepted for inclusion in Current (1980s) by an authorized administrator of IRL @ UMSL. For more information, please contact marvinh@umsel.edu.

INSIDE

News pg. 2
Editorials pg. 3
Features pg. 5
Sports pg. 6
Classifieds pg. 7

War Is Hell

Michael J. Fox and Sean Penn recreate one side of the Vietnam Conflict in "Casualties of War". see Features, pg 5



We Want You

Take the Challenge and Participate in a group at UM-St. Louis. see Editorials, pg 3



Campus Reminder
No class on Monday due to the Labor Day weekend



CURRENT

Issue 639

University of Missouri-St. Louis

August 31, 1989

Learning Time

Lit-Mag Forgets Past Errors

by Thomas Kovach
news editor

In a year that amounted to hopes of a publication that would have been of poetry, short stories and other ideas, the Literary Magazine at UM-St. Louis wrote it's own fate in 1988, say several members of the publication.

According to this year's Editor Norman Welch and fellow staffer Robert Holland, the fall of Lit-Mag came because the group's president in 1987-88 used funds that were not in the budget.

Welch said that the problem has led up to the delay of Lit-Mag until October. The publication was scheduled to be released in April.

But putting the blame on one or two persons isn't what Welch and Holland had in mind. Instead they said they are educating themselves now in order to avoid future errors.

But with that learning experience, however, came a certain amount of anger inside of Welch and Holland.

"It was very frustrating. And there was a lot of bureaucratic changes," Welch said. "In the end it was educational."

Holland also said it was frustrating for him because, "it seemed everywhere we turned, we couldn't seem to get it resolved."

The story behind the fall of Lit-Mag began during the summer of 1988. The editor at the time, Peter Abel, attempted to use

about \$1600-\$1700 in money that was left over to pay off the costs of printing the magazine.

But UM-St. Louis policy states that any organization that has not used all of their money by the end of the fiscal year (June 30), will have it taken away. The money is then thrown into a Student Activities Reserve Account.

Welch and Holland thought that Abel didn't purposefully throw Lit-Mag into trouble.

"There were mistakes made and no one is to blame. We didn't fully understand the procedures. Rules were inadvertently violated."

"I don't want to put the blame on one person," Welch stated. "He [Abel] hadn't done the right thing for the bill to be paid. He thought he did the right thing."

When Abel graduated that same year, Lit-Mag's future was still in a cloud. More questions were raised to Welch before EXPO of 1988.

"I knew we had a problem at the time of EXPO last year. The problem was the bill was unpaid. Basically our funding was taken away," he said.

According to Welch, the organization received a form later that month in the mail from the Student Activities Budget Committee [SABC], saying that all funds for the 1988-89 year were cut. And that came much to the surprise of Welch and Dennis Bohenkamp, advisor at the time.

"I thought it was a form for funding for next year," Welch

said. "Dennis Bohenkamp thought the same thing. It was a matter of unable to read forms."

Towards the end of September, Welch wrote a letter to Director of University Center Bob Schmalfeld, asking for his help.

"He was extremely helpful. And he acted as if there was going to be a magazine," Welch said.

But SABC turned down their request for funding to be re-instituted and that was when Lit-Mag staffers began to feel queasy about their 1989 April edition.

"There were times when I felt like throwing up my hands and saying 'This is it. I quit,'" Welch said

Lit-Mag has been allocated \$1,532 from SABC for the 1989-90 Fiscal year that began on July 1 and Welch has prepared a guideline for his group so errors are avoided in the future. He said in the April 20 edition of the Current that the idea of an accounting student be included on the magazine's staff as a business manager.

He also hopes that other groups on campus avoid the headaches that Lit-Mag suffered. "I hope organizations can learn from our mistakes."

The magazine's advisor, Nan Sweet, will play a more active role in the group. "I will be alerting them of administrative deadlines and guidelines because I am getting an increased volume of mail," she said.

Pickens Content With Parking On First Day



PARKING CRISIS: Although the University police department said the parking situation was under control, students found themselves parking on grass and in close quarters.

by Thomas Kovach
news editor

While students, faculty and staff kept a watchful eye for any possible parking spot in lots, grass and

gravel roads on the first day of school Monday, UM-St. Louis Police Chief John Pickens was pleased about how university officials were prepared for the parking crunch, even though one parking garage won't be open until next month.

"The key was the communication given out to the students," Pickens said. "I think it went smoother than last fall."

That line of communication was relayed to members of the UM-St. Louis community in a memo sent out by the office of Vice-Chancellor for Administrative Services, Laurence Schlereth.

The memo stated that two out of three garages, "C" and "N" that were closed over the summer because of structural repairs, would be open on August 28. Garage "D" will still be closed, eliminating 700 parking spaces until late September.

Pickens did emphasize that no parking tickets will be handed out, unless a vehicle is parked in a handicapped zone or is blocking traffic.

Schlereth urged students to take

advantage of shuttle vans located on the South campus. The shuttle will run from 7 a.m. until 6 p.m. Students, according to the memo, should not wait no longer than five minutes for a shuttle.

Schlereth also encouraged students to car-pool and allow extra time to get to campus.

Another reason behind a successful first day of handling parking, according to Pickens, was that all the officers were out assisting traffic. "We got everybody [to help]. I had enough people out there. What we did is that each person would be by a garage," he said.

He said that when the garage was filled, the officer would close down the lot instead of students driving around looking for spots.

Pickens said that the traffic control will continue for the rest of the week and the first half of next week.

Around 10 a.m., all spots on the North campus were almost taken. "Once they were filled on the North campus, we directed them to the South campus," Pickens said.

Students Face Loss Of Reps In Senate

by Kevin Kleine
editor

The University Senate started off the year by facing a major change.

Last year's chair of the senate, Mark Burkholder, left his position over the summer to take a

higher one in the UM System. Burkholder is now the Associate Vice-President of Academic Affairs in the central administration in Columbia.

Burkholder's departure left the senate with the task of finding a replacement at their first meeting on Aug. 29.

Thomas Jordan, a Curators Professor from the Parents As Teachers program, was elected to be the new chair. Jordan has earned an international reputation with his research related to children. He has been studying the psychological evaluation of children for almost 40 years and is a former dean of the UM-St. Louis Graduate School.

The senate faces a long list of issues to address this year including parking, staff and faculty salaries and student involvement in the senate.

Student Government Association President Terence Small sees this year as a crucial



Thomas Jordan

one for student representation in the University Senate.

"This could be the year that the senate and the faculty get fed-up with the lack of student participation," Small said. "Things kind of creep up on you

and most of the students elected to the senate just don't realize how important it is to attend those meetings."

Small feels that there may be a move in the senate to reduce the number of seats currently held by students. Faculty occupy 75 seats in the senate and students hold 25. Small said that some members of the senate want to cut student representation to 10 or 15 seats.

Small said he plans to hold several workshops to encourage student participation in the senate.

Students serve on many committees in the senate and over the past few years their attendance has been dwindling. Small feels that part of the blame rests on the senate itself.

"The senate should do a better job of explaining the importance to the students," Small said. "If not, the SGA will."

Runge Appointed New Curator

by Thomas Kovach
news editor

Saying that it will be a goal of his to learn about higher education in the state, G. Andy Runge was appointed to the University of Missouri Board of Curators by Gov. John Ashcroft on August 17.

Runge, a lawyer from Mexico Mo., replaces Carrie Francke, who died in a automobile accident May 22.

Although he said he has followed many University of Missouri System issues from the outside, Runge points out that, "I intend to educate myself. The funding—there is obviously major discussion about it."

Before the nomination of Francke to the Board of Curators in late January of this year, Runge said he had sent out a letter to the Governor's office, indicating his interest for the job.

After the death of Francke, Ashcroft contacted Runge. This time it was for the position of Curator.

"I think the Governor made a excellent choice and I'm delighted with the appointment," Edwin S. Turner, President of the Board of Curators, said.

"He sounds like he is well-qualified," Curator Jim Sterling said. "As far as the role he will be playing, he will be looking at the campuses and what's good for the state and university."

Runge graduated from Central Methodist College in 1952. While at the college, he served as Vice President of the Student Body and that carried an automatic appointment to the Social Committee.

He later received a law degree from the University of Missouri at Columbia in 1957.

Runge said that one of his primary interest include conservation. In the 1976 campaign, he helped pass a one eighth of one percent sales tax dedicated to the cause of conservation.

His other accomplishments include former president of the Missouri Conservation Confederation

"I intend to educate myself. The funding—there is obviously major discussion about it."

G. Andy Runge

from 1973-1979 and current president of the state's Prairie Foundation.

Runge has been active in government in the state. He is president of the local chamber of commerce and has served on many board's and committee's.

Runge is a republican and said that he has close ties to former Missouri Governor Kit Bond and Ashcroft.

Lack Of Profs Cited In Report

(CPS)—Students on half the campuses across the country will find their schools suffering from some sort of shortage of professors this fall, the American Council on Education (ACE) predicts.

While experts have been forecasting colleges in the 1990s will suffer drastic faculty shortages — perhaps up to 100,000 campus-level teaching jobs will remain unfilled for lack of qualified people — the ACE report is the first to indicate the problems may have started.

Half the campuses surveyed earlier in August by the ACE, a trade group for college presidents based in Washington, D.C., reported their searches for qualified teaching applicants take longer than in previous years.

And when they find someone they want to hire, half the schools say they are having trouble convincing the applicants to take the jobs.

"We've seen the proportion of campuses reporting difficulty in this area nearly double in the last two years, and we expect this trend to continue into the 1990's," warned the

ACE's Elaine El-Khawas, author of the report.

El-Khawas found colleges are having the most trouble finding computer science, math, health, and business professors.

Nationwide, 15 percent of the tenure-track business professorships went unfilled for the 1988-89 school year, estimates the American Assembly of Collegiate Schools of Business (AACSB).

To keep up, campuses will need to hire 37 percent more professors by 2003, estimated Mike McGuire, senior planning officer at Franklin and Marshall College in Pennsylvania, where he recently finished a study of faculty attrition at 29 institutions.

For students, this means that more of their classes will be taught by graduate assistants and, presumably, not as effectively as they would have been with fully trained professors at the head of the room.

Louisiana State University, for example, has lost so many professors in the past eight months that some of its administrators are worried some LSU programs may lose their accreditation.



Patricia Wente

Wente Named GM Of KWMU

KWMU, the public radio station at UM-St. Louis, has appointed Patricia Wente as General Manager of the station effective August 1.

Wente, who replaces Rainer Steinhoff, served as manager of the Station Grants Program at the Corporation for Public Broadcasting [CPB].

"I hope to use my experience at CPB and at member stations to enhance the potential of KWMU to make a good station a great station," Wente said. "I hope to make KWMU one of the premiere public radio stations in the nation."

Wente has managed National Public Radio stations at the University of Oklahoma and Wichita State University. She holds a master's and bachelor's degree in communication from Sangamon State University.

Campus Events

FRIDAY, SEPTEMBER 1

●The Newman House, located on 8200 Natural Bridge Road, will hold a free barbeque from 5 to 8 p.m. The Newman Center also offers Daily Mass on Wednesday at noon, Thursdays at 11 a.m., and Friday noon in Room 266 University Center.

MONDAY, SEPTEMBER 4

●Experienced musicians interested in rehearsing and performing jazz in a contemporary big band setting are invited to audition for the University of Missouri-St. Louis Jazz Ensemble. The group meets from 7 p.m. to 9 p.m. on Mondays, August 28-December 4 on the UM-St. Louis campus. To register, or for more information, call 553-5961 or contact Rex Mastze.

TUESDAY, SEPTEMBER 5

●Former high school choir members, and members of church or other large choral groups are invited to join the UM-St. Louis Community Chorus led by Dr. John Hylton,

associate professor of music at UM-St. Louis. Community Chorus is a non-credit course that meets from 7 to 9 p.m. on Tuesdays, August 29 -December 5 on the UM-St. Louis campus. For more information, and to register, call 553-5961.

WEDNESDAY, SEPTEMBER 6

●Local musicians interested in performing in a large ensemble are invited to audition for the University of Missouri-St. Louis Symphonic Band led by Dr. Gregory Fox, UM-St. Louis assistant professor of music and education. Symphonic Band is a non-credit course that meets from 7 to 9 p.m. on Wednesdays, September 6 - December 6 on the UM-St. Louis campus. For more information, and to register, call 553-5961.

REACH HIGHER

with

HEC

HIGHER EDUCATION CHANNEL

Offering these credit and non-credit college courses on television:

HEALTH

- Health Assessment
- Here's To Your Health
- Lilies, Yoga and You

PERSONAL ENRICHMENT

- French in Action
- Science and Culture in the Western Tradition
- Creative Living

BUSINESS

- Entrepreneurship
- European Journal
- Computerworks

And Many More!

HEC is on all St. Louis City and County cable systems

REACH HIGHER

Call today: (314) 725-3712





NEVER A COVER!

ALWAYS A PARTY!

Aug 28-Sept 4
The Russ Bono Band
Sept 5-9
Sgt. Karter


Every Sunday
KJOY's
LIVE BROADCAST
6 pm-11:30 pm
THE ORIGINAL SUNDAY NIGHT OLDIES SHOW!

HAPPY HOUR!
FREE Buffet
Everyday A
Different Menu
5-7 pm

Every Week
6-9 pm
LIVE ON LOCATION
Get out of the library and into the neighborhood

1-270 at Dorsett Rd. NE Corner

for more info
291-4030



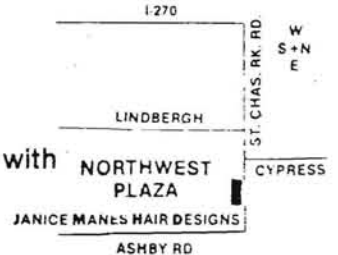
JANICE MANES HAIR DESIGNS

"BACK TO SCHOOL SPECIAL"

429-3800

10646 St. Charles Rock Rd.
St. Ann Medical Bldg.

	UMSL Students	Reg. & Faculty
● Haircuts	\$14	\$10
● Highlight	\$20-25	\$15-20
● Perm	\$47	\$35
★ includes haircut & style		
● Spiral Perm (hair must be 7 inches or longer)	\$65	\$45
★ includes cut & style also		



25% OFF any other services for Students & Faculty

Discount Prices Good w/UMSL I.D.

Call for an appointment with Robyn ... 429-3800

Tue-Thurs 9:30 to 8:30
Fri-Sat 9:30 to 4:00

10646 ST. CHARLES ROCK ROAD
(Just 1/2 mile East of Northwest Plaza)

Monday Noon Series

A Free Cultural Series

Rm. 229 • J.C. Penney Bldg.
University of Missouri-St. Louis Campus
September 11, 1989—April 30, 1990

Schedule for September/October

September 11
"Humor in Art"
Elizabeth Vallance
Director of Education
The Saint Louis Art Museum

September 18
Jan Gippo, Piccolo/Flute
Saint Louis Symphony Orchestra

September 25
"Explaining Scientific Revolutions," Richard Giere
Director, Minnesota Center for Philosophy of Science

October 2
"Who Dunnit? How Science Works to Combat Crime"
Harold Messler
Chief Criminologist
St. Louis Forensics Laboratory

For more information, contact Sally Fitzgerald at 553-5180.

October 9
"The Humanities in the Historical Society," Robert R. Archibald
Executive Director
The Missouri Historical Society

October 16
Bradford Buckley
Bassoon/Contrabassoon
Saint Louis Symphony Orchestra

October 23
"A Class Act: An Improbable One-Man Musical on the Subjects of Learning and Loving"
Raymond Carver, Department of Communication guest lecturer

October 30
"Cultural Mysteries on the Banks of the Mississippi: The St. Louis Mercantile Library Association"
Jerrold Lee Brooks, Executive Director, The St. Louis Mercantile Library Association

Interested in Getting Involved with the University Program Board?

Wednesday Noon Live

University Center Patio
11:30am - 1:30pm

Sept. 6th	ATHENA and the HUBCAPS
Sept. 13th	Ralph Butler Band at EXPO '89
Sept. 20th	The UNCONSCIOUS
Sept. 27th	FAIRCHILD

Contemporary Musical Events
(small concerts, dances, solo music)

Arts & Lectures
(speakers, theatre, live arts, etc.)

Video Presentations
(film series, TV Lounge)

Special Events
(comedy, variety, campus-wide events, etc.)

Recreation & Travel
(outdoor activities, ski trips, Spring Break, etc.)

Exhibits & Displays
(art, photos, or other exhibits)

Promotions & Marketing
(advertising, etc.)

Stop by the Office of Student Activities
Room 250 University Center!

EXPO '89... Choices

"Something for Everyone"

Gift Pax

SEPTEMBER 13, 1989

freebies

10:00am-2:00pm & 4:30pm - 7:30pm


Lots of food!

live music by
"The Ralph Butler Band"

games

FREE Ice Cream

giveaways



University Program Board

UMSL STUDENTS . . .

this is what you've been waiting for!

College Night on EVERY Wednesday!

Join your friends at **Hits** and pick up a college ID card. Your card entitles you to 50% off admission price ANY night, as well as food and beverage discounts on Mondays, Tuesdays and Wednesdays.

Wed Aug 30
Thurs Aug 31
Fri Sept 1
Sat Sept 2
Wed Sept 6
Thurs Sept 7
Fri Sept 8
Sat Sept 9
Wed Sept 13
Thurs Sept 14
Fri Sept 15
Sat Sept 16

Big Fun ★ College Night

Accousiticity

Cagney

Duya Duya

Rhythm Rocker★

TBA

Accousiticity

Rondo Blues Deluxe

Big Fun★

Jon Do

Ralph Butler

Murder City Players



15421 MANCHESTER RD. ST. LOUIS MO. 63011 (314) 256-4949



Just Get Involved

After the welcoming speeches from faculty, the administration and student leaders has worn off, many students will settle into the grind of classes and forget about life after class.

A common complaint of the new student is that this campus has nothing to offer socially. All it takes is a little effort to find a club or organization that suits your taste.

Student apathy has always been a problem. This year will be a crucial one for student representation in the University Senate. If the lack of student participation persists this year as it has in the past, there are rumblings of cutting back the number of student reps in the senate. Reducing the number of students in the senate would be a very effective means of drowning out the student voice, but by no means as effective as student absence and silence in the senate.

This year's student government needs a big boost in active members also. SGA president Terence Small is in the process of implementing some reforms to student government and needs an active assembly to make his goals attainable.

New rules governing recognized student organizations require all groups that receive money from the Student Activities Budget Committee to have a representative in the SGA and that representative or some one designated by the organization must regularly attend the meetings or have their funds frozen.

It's sad that it take a forceful action like requiring representation to insure student participation, but in the long run it will make for a more democratic assembly.

New members of the assembly who have had the commitment to show up to the unofficial SGA meetings this summer should have patience with the transition student government is going through right now. The summer meetings spawned a lot of frustration and arguing among the members, but this should be looked at as a healthy process for the SGA to go through. Openly discussing issues and arguing different sides is a normal part of any government body. The assembly members need to stick with the program to have an effective SGA this year instead of a mirror image of the last two student assemblies where a handful of members controled all student government functions and accomplished very little.

The average student may think that they have no say in what goes on in the student government. They could not be more wrong. In October, elections will be held to provide new students with representation in SGA. Another way of voicing your opinion is to join one of the organizations represented in SGA. You can't be heard if you don't make an effort to become active in campus life.

As a challenge to all student leaders, the next time you hear someone complain about the lack of activity or social life on campus, stop them and ask them what they are doing about it. Hopefully this years SGA can find some common ground among themselves and make this year a productive one.

The Parking Zone

We go to school in Parking Hell!
A bad parking situation has become worse over the last year or so. The closing of garage "D" and several other garages has brought a heighten awareness to the severe problem of parking on this campus.

The repairs done over the summer are merely a band-aid to cover a larger wound. The garages standing now were not intended to last for 20 years as they have. they were intended to be replaced by permanent structures after 10 years.

Students of this campus should take every opportunity to make life hell for administrators and state legislators until someone comes up with a reasonable alternative to temporary repairs on temporary garages.

Ask questions like:
● Why doesn't the state take some responsibility in maintaining the campus parking and roads?
● Why are the students always the ones to bear the burden of repairs and maintenance?
Maybe if the students took a stand on an issue instead of letting the status quo tie them down, a solution could be reached.

Some good ideas about how to deal with the problem of parking are floating around in the SGA right now. The Assembly needs to jump on the issue while it's hot and while we have garage "D" as a reminder, then hound the necessary officials until a plan of action is developed.



Ranting, Raving In A Panic

Oblivion

by Shawn M. Foppe
managing editor
Here I sit staring at a blank screen. I know you've read the previous sentence in various columns in this paper until you're blue in the face.

You may ask why such creative writers are reduced to such sorry dribble. Well to begin with, I walked into the venerable offices of the Current at 3:30 this past Tuesday to learn, to my surprise, that we had an issue to publish. Not only was I not prepared to publish an issue of the Current, I had no idea what my column was going to be about.

I panicked and tried to come

up with a few ideas to write about, but was continually interrupted by various staff members asking me this or that. It then struck me why the previous owner of this job never wrote his column until 2 in the morning.

As managing editor, you are faced with continual questions about lay-out design, newspaper style and everything else about which nobody wants to bother the editor. In addition to this, you have to field calls and letters from faculty members complaining about the periodic mistakes that happen into the paper.

I have no problem dealing with faculty members as I have been dubbed the "p.r. member" of the staff. My fellow staffers accuse me of being more positive about the university than Edwin Turner, Peter MacGrath and Marguerite Barnett rolled

into one. But after the one hundredth call about the use of "affect vs. effect", it hit me. The rest of the campus has no godly idea what goes on to publish a weekly newspaper. They're more worried about spelling than the issues.

This is not to say that the often incredible and bumbling mistakes that make it past a copy editor, the page editor as well as the managing editor and editor are to be overlooked. But when students have to park on the grass, the library can't afford to buy the same periodicals it bought last year, and the theatre program balances on an ever narrow precipice, I find it hard to believe that the only thing readers have time to complain about is the spelling or use of a word.

So get off your lazy buns and start writing about the issues that really matter at UM—St. Louis and quit wasting all those poor trees complaining about spelling and grammar.

true, the Current is publishing an honest to goodness fashion supplement the middle of this semester. The fashion insert will be the first major supplement that the Current has attempted and you can be a part of it.

If you've always wanted to try you hand at modeling but didn't want to waste your money at John Robert Powers, here's your chance. Drop off a photo of yourself at the Current's offices located in the Blue Metal Office Building or in the drop box located in U. Center. If you don't have a current photo of yourself, contact Laura Bernardino at 553-5174 and she will make arrangements to have our staff photographer shoot you.

Applicants chosen to appear in the supplement will be contacted by phone with more information so be sure to include your phone number with your photo


Stay tuned next week when I'll discuss the trials and tribulations of a college student in search of chocolate in campus vending machines

LETTERS POLICY

The Current welcomes letters to the editor. The writer's student number and phone number must accompany all letters. Non-students must also include their phone numbers. Letters should be no longer than two typed, double-spaced pages. No unsigned letters

will be published, but the author's name can be withheld upon request. The Current reserves the right to edit all letters for space and newspaper style considerations. The Current reserves the right to refuse publication of any letter.

HELP WANTED: Medium size campus paper looking for hunks and dolls to expose themselves in premiere fashion mag. Yes indeed, the rumors are

**CURRENT**

The Current is published weekly on Thursdays. Advertising rates are available upon request by contacting the Current Business Office at (314) 553-5175. Space reservations for advertisements must be received by noon Monday prior to the date of publication.

The Current, financed in part by student activities fees, is not an official publication of the University of Missouri. The university is not responsible for the Current's contents and policies.

Editorials expressed in the paper reflect the opinion of the editorial staff. Articles labeled "commentary" or "column" are the opinion of the individual writer.

© 1989 by the Current

All materials contained within this issue are the property of the Current and can not be reproduced or reprinted without the expressed written consent of the Current and its staff.

Blue Metal Office Building
8001 Natural Bridge Road
St. Louis, Mo. 63121
Phone: (314) 553-5174

Kevin Kleine
editor

M. Faisal Malik
director of business affairs

Shawn M. Foppe
managing editor

Thomas Kovach
news editor

David Workman
sports editor

Mike Van Rooy
copy editor

Stephen Hood
editorial cartoonist

Cathy Dey
advertising director

Laura Bernardino
features editor

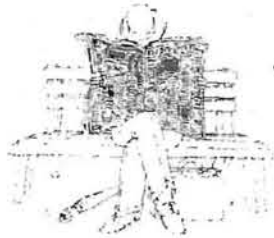
Greg Albers
associate features editor

Scott Brandt
Photography director

reporters:
Carla Addoh
Paulette Amaro
Janice Gregory
Brian Johnson



The New York Times



Take advantage of special low rates for campus delivery of *The New York Times*!

You pay only 25¢ per copy (regularly 50¢) for daily campus delivery!

STAY CURRENT IN YOUR FIELD! Call, drop off, or mail this form to:

University Bookstore
8001 Natural Bridge Road
St. Louis, MO 63121
553-5763

Enclosed is my check for \$
MONDAY-FRIDAY 18.25
Payable to the University Bookstore

NAME:

ADDRESS:

TEL#:

Orders Start: 8/28, Stop: 12/8
Thanksgiving Break excluded

Join our college students of all ages
working part-time in West County
and receive up to \$150 each
semester for your books!



SCHOOL
REQUIRES
SOME
HEAVY
READING.

LET
SCHNUCKS
PAY FOR
YOUR
SCHOOL
BOOKS.

Schnucks applauds ambitious students who are earning while they're learning. To qualify for reimbursement of up to \$150 for the cost of your books, you must:

- Earn a "B" or better in the courses for which you purchase textbooks.
- Provide a receipt for your purchased textbooks.
- Work part-time at a West County Schnucks store. Choose the location that's most convenient:

• Ballwin • Mason
• Chesterfield • Des Peres
• Frontenac • Woods Mill
• Creve Coeur

Work an average of 16-24 hours per week. Flexible schedules with overnight, early morning (as early as 5AM), afternoon and evening hours are available. Weekend hours are necessary.

HERE'S OUR LIST OF OPENINGS

Checkers • Baggers
Stock Clerks • Deli Clerks
Bakery Clerks • Salad Bar Clerks
Video Clerks • Cooks
Waiters/Waitresses
Dishwashers

For more information, please contact:

Student Employment Program
(Career Placement Services)
Woods Hall
Room 346
553-5319

Schnucks

The Friendliest Stores in Town
*Enrollment is limited to 200 participants.
Equal Opportunity Employer

CAREER BLAST-OFF Time To Register

Jrs: Co-op & Internships
Srs: Jobs After Graduation
★ on campus recruiting
★ resume & interviewing workshops
★ immediate job listings

Also: listings of available PART-TIME jobs

Career Placement Service
In Touch With Your Future
308 Woods Hall



Discover Kinko's

We can be your support staff!

1/2 OFF
Typewriter
Rental

Come into Kinko's Copy Center and receive 1/2 off on your typewriter rental time. Not valid with any other offer. One coupon per customer. Valid through 9-30-89.

- Quality Copies
- Collating
- Specialty Paper
- Pick-Up & Delivery
- Fax Service
- Professional Binding
- Passport Photos
- School Supplies

kinko's
the copy center

Open 7 days

524-7549

University Plaza
I-70 and Florissant Rd.
8434 Florissant Rd. • St. Louis

RESERVE OFFICERS' TRAINING CORPS



THE MORE YOU USE YOUR HEAD,
THE MORE MONEY YOU CAN GET FOR COLLEGE.

Enroll in Army ROTC as a college elective and serve part-time in the Army Reserve or National Guard, and you can get as much as \$4000 a year for college. That includes your Guard or Reserve pay, the GI Bill and up to a \$1000 grant each school year from ROTC.

Add it all up, and you'll graduate with a college degree plus an Army Officer's commission. And all you have to do is use your head.

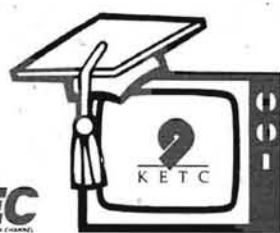


ARMY ROTC

THE SMARTEST COLLEGE
COURSE YOU CAN TAKE.

for more information call:
Captain Jon Boyle at 553-5176
or stop by Room 44 of the
Blue Metal Office Building

Earn College Credit At Home fall '89



through telecourses offered by **St. Louis Community College** on KETC-TV, Channel 9 and the Higher Education Cable Channel (HEC).

Most courses begin the week of Sept. 9, 1989. Earn college credit for each of the following:

BIO:113	Modern Aspects of Biology	HUM:114	Exploring the Arts
BUS:104	Intro to Business Administration	MGT:116	Management Fundamentals
DP:116	Microcomputer Literacy	MKT:501	Introduction to Marketing
FRE:101	Elementary French I	PE:274	Health and Personal Hygiene
GEO:100	Earth Science	PSC:205	Constitutional Issues
HST:101	American History I	PSY:200	General Psychology
HST:125	World Civilization I	SOC:101	Introduction to Sociology

For enrollment information and a descriptive brochure, call the Telecourse office, Information and Telecommunications Resources, at (314) 644-9798.



St. Louis Community College
Florissant Valley • Forest Park • Meramec

Education that Works.

EVERYBODY'S TALKING ABOUT THE REP

1989-1990

1989-90 SEASON

The Merry Wives of Windsor, TEXAS

Conceived & Adapted by John L. Haber; Music & Lyrics by Tommy Thompson, Jack Herrick, Bland Simpson and Jim Wann
Sept. 6 to Oct. 6

Knee-slapping western music, by The Red Clay Ramblers, catapults Shakespeare into the wild Texas frontier.

Precious Memories

by Romulus Linney
Jan. 3 to Feb. 2

Mountain folk music surrounds this gripping drama as vivid characters fight for control of an Appalachian town.

A WALK IN THE WOODS

by Lee Blessing
Oct. 11 to Nov. 10

A play of humor and feeling, based on an actual event during the 1982 Geneva arms negotiations.

FENCES

by August Wilson
Feb. 7 to March 9

This Pulitzer Prize winning play examines a black man's reactions to years of bigotry and crushed dreams.

the Matchmaker

by Thornton Wilder
Nov. 29 to Dec. 29

Dolly Levi is in charge of romance and fun as mismatched lovers end up in perfect combinations.

HAY FEVER

by Noel Coward
March 14 to April 13

A family of eccentrics creates a wacky weekend in the country for houseguests. Sophisticated wit, Coward style.

Repertory

THE REPERTORY THEATRE
OF ST. LOUIS

STUDENT RUSH \$5.00
TICKETS
968-4925
(30 MINUTES BEFORE CURTAIN)

Men's Soccer Recruits To Fill Line-up

With the 1989 soccer season about to begin, the Rivermen are once again faced with replacing several key players.

Gone from last year's 18-3-1 squad are nine lettermen including first team All-Americans Jeff Robben (goalie) and Scott Wibbenmeyer (stopper).

Rivermen coach Don Dallas is also faced with replacing All-Midwest forward Boyd Buchek, who led the team in total points last season (10 goals, 7 assists).

"We've always lost good players," Dallas said, who is 210-81-29 in 21 seasons of coaching the Rivermen. "I just hope we're fortunate enough again to have quality players to take their places."

The Rivermen, with some strong returning players and a talented recruiting class, should not have much difficulty in picking up the slack.

Returning up front for the Rivermen are senior midfielder/forwards Warren Dey (10 goals 5 assists) and John Galkowski (8 goals 9 assists). Galkowski is considered an All-America candidate and both players should provide a strong offensive attack for the team.

Taking over for Robben in goal will be senior Pat Mulvaney.

Mulvaney, a two sport athlete, hit for a .331 average as the starting catcher on the Rivermen baseball team.

Ron Schonhoff, John O'Brien, and Tim Gauvain are all expected to contribute to a strong defense.

The recruiting class is led by All-State forward Craig Frederking. Frederking led Hazelwood Central High School with 21 goals last season. Kevin Henessy (CBC



FIRST ROW (from left to right): Doug Weise, Mark Goldstein, Scott Litschi, Greg Tieber, Matt Wohlstadter, Pat Mulvaney, Anthony Grayek, Ron Schonhoff, John O'Brien, Warren Dey, Mike Schnell, John Brown. **SECOND ROW:** Tom Redmond (assistant coach),

High School), Scott Litschi (Kennedy) and Greg Tieber (Kennedy) are also expected to give the team a boost.

"The biggest problem will be fitting all the players in the right places," Dallas said. "It might take a few games."

Dallas will have to work fast. Three of his first four games have the Rivermen pitted against

traditional powers SIU-Edwardsville, St. Louis University, and Washington University.

The Rivermen's first game of the year is against the Cougars of SIU-E at 7:30 p.m. at the UM St. Louis Soccer Stadium. The Cougars lead the series between the two schools, 13-6-2. Last year, Buchek's late goal gave the Rivermen a 3-2 win.

Esteban Garcia, Tim Gauvain, Andy Noto, Jason Mims, Bob Trigg, Brian Hennessy, Dave Gauvain, Bob Ferguson, John Galkowski, Todd Barry, Craig Frederking, Nick Bertich, Tim Friedman (trainer), Don Dallas (head coach).

The Rivermen got a taste of victory early in the season with two wins over Flo Valley Community College, 3-1 on August 23 and a Illinois State on August 27.

Warren Dey, Frederking and Tieber scored in the first game. Brian Hennessy knocked in the only goal in the win over Illinois State.

"We got a chance to play a lot of new people," Dallas said. "I was encouraged by the play of our freshmen, especially Frederking, Doug Weise, Scott Litschi, Tieber and Hennessy."

Matt Wohlstadter has been sidelined for most of the pre-season with a knee injury. He is doubtful to play in the opener.

Riverwomen Kick Off Year With Young Team

The UM-St. Louis women's soccer team once again begins its regular season next week with a very young team, according to head coach Ken Hudson.

Hudson, head coach for the past

nine years, predicted that of the 11 starters this season, nine could possibly be freshmen and sophomores. Six of the sophomores on the team are back from last year, and they hope to retain their start-

ing positions this year.

"We'll probably have the youngest team in the country," Hudson said.

But no matter who the lineup ends up being this year, Hudson says he

hopes the players mature in a hurry.

Last year's young squad suffered the pains of an 8-12 season, the first losing season in the history of UM-St. Louis.

Hudson said, "Our players gained a lot of experience last year, but they don't want to go through it again."

Defenders Anne DeGunia (DuBourg), Julie Intaglia (Nerinx), and Karen Merlo (Mehlville), midfielders Christine Berry (Nerinx) and Kellie Leach (Mehlville), and goalkeeper Linda Allen (Oakville) all starred as starters last season. The "six-ack," as they are affectionately called, is back this year in full strength.

The team did, however, lose three outstanding seniors at the end of the last season. Stephanie Gabbert, Laurie Aldy, and Donna Barbaglia all graduated in May.

Mary Pat Timme is returning to join the team as a junior and an experienced veteran. Timme, a two-year starter, will captain the team this season after a very solid sophomore season.

Timme was elected to the first team All-Midwest last year and is slated to anchor the UM-St. Louis backfield as a stopper.

Highlights of the upcoming season include away games against Northern Colorado (October 13) and California-Poly Pomona (October 14).

By playing against foes from the South Central Region, Hudson said he hopes to earn an invitation to a post season spot.



FIRST ROW (from left to right): Janet Iannicola, Monietta Slay, Mary Pat Timme, Kim O'Hare, Laura Shlenk, Becky O'Hare, Christine Berry, Anne DeGunia. **SECOND ROW:** Stephanie Gabbert (student

assistant coach), Faith Boone (trainer), Julie Intaglia, Karin Steinmeyer, Erin Howell, Kellie Leach, Linda Allen, Sue Lammert, Jennifer Zingg, Tammy Hutson, Karen Merlo, Ken Hudson (head coach).

Netters Open Season Friday; Face Hard Teams This Year

The rankings of teams and their records that the UM-St. Louis intend to play this season doesn't scare Head Coach Denise Silvester's Volleyball team one bit. In fact, Silvester said that the more competition the Riverwomen face, the better they will be.

"We had a young team last season that gained a lot of experience with our extremely competitive schedule. We will show more poise when playing our tougher competition this season," Silvester said.

The competition starts immediately for the Riverwomen. This weekend, the team runs into local rivals St. Louis University and Division III powerhouse Washington University. Both those games at SLU start Friday at 3 and 5 p.m. respectively.

"It's going to be a very tough weekend," Silvester said. "St. Louis U. will be stronger than they were last year. I can't see Washington U. being anything

but stronger too."

After those games, the Riverwomen will face even more stiff competition. Their schedule includes five schools that are ranked in the NCAA Top 20. Slated to play the Riverwomen include defending MIAA champion Central Missouri State University, 8th ranked West Texas State, 11th ranked Tampa, 13th ranked Metropolitan State and 17th ranked Florida Southern.

To combat those teams, Silvester said she has a line-up that is capable of filling every spot.

Hoping to get time in the starting line-up include Geri Wilson, Karen Ellingson, Stephanie Hahn, Stephanie Jensen, Wendy Poropat, Julie Boedefeld, Renner Reimer, and transfers Pam Paule and Claudia Weismiller.

All-Conference player Carla Addoh will not play until the Red and Gold Invitational next week. She is out with a pulled quadricep muscle.

Walker Named Assistant Coach

UM-St. Louis head basketball coach Rich Meckfessel announced last week that Bill Walker has been named to the position of assistant basketball coach.

Walker, who graduated in 1987, played three years at the University of Missouri-Rolla.

He was then hired as the graduate assistant coach at the University of Alabama-Birmingham, serving under head coach Gene Bartow for two years.

Walker is replacing Paul Ellis, who left UM-St. Louis in June in order to join the coaching staff of Southwest Missouri State University.

"Bill was recommended strongly by a number of outstanding college coaches, including Gene Bartow," Meckfessel said.

Born in Fayetteville, Arkansas, Walker, 24, moved to Warrensburg, Missouri, at age 2. Later, he attended Warrensburg High School, and he led the basketball team to a cumulative 73-6 record in his three years as a varsity player.

As a senior, Walker was the

"Bill was recommended by a number of college coaches, including Gene Bartow."

Rivermen Head Basketball Coach Rich Meckfessel

first team Missouri Class 3A All-State selection.

In 1983-84, Walker played his freshman year of college basketball at State Fair Community College in Sedalia, Missouri. He helped the team to a 25-9 record that season.

The next year, Walker transferred to Missouri-Rolla and emerged as one of the top players in the program. He earned honorable mention recognition on the All-Missouri Intercollegiate Athletic Association squad both his junior and senior years.

A top notch student, Walker continued his education at Alabama-Birmingham the past two years. He received his Masters Degree in Athletic Administration from the school this past spring.

Coming from a family that is heavily involved in sports, Walker was always surrounded by athletic people. His father, Floyd, is a former athletic director at Central Missouri State University and presently is the associate athletic director at the University of Missouri-Kansas City.

Walker's sister, Barb, is the assistant athletic director at the University of Oregon, while his brother Burt is a football coach at Pleasant Lea Junior High in Lee's Summit, Missouri.

"I think he will be a very hard-working and effective recruiter as well as a very good floor coach for us," Meckfessel said.

Meckfessel added, "Bill has been around college sports all his life. He understands college athletes and the MIAA. Plus, he has had an excellent basketball background, the eagerness to succeed, and a high

It Is The Card That Pays Back

by Thomas Kovach
news editor

There's a fellow on the editorial page of the Current who is always making a "big deal"—and it's usually out of something. Ever since Editor Kevin Kleine came from that popular school of Miz-zou, where recruiting violations and arrests of players are commonly made, he has been a proponent of student involvement in clubs at UM-St. Louis.

"Noon at UMSL (Oops, UM-St. Louis)," Kleine wrote in his column "Big Deal" in the October 22, 1987 edition of the Current. "A great sea of students back their cars from their respective parking spots and, in a mass migration, head for the exits... At Mizzou everything centers around the campus. People actually hang around and participate in student activities. What a novel concept."

If you think this is another stab at students who don't get involved in any UM-St. Louis activities, then you are right. But before you say "I am involved in an activity here," reach into your wallet or purse and dig out that student identification card with that stupid picture of you on it.

Now after you use that card to get library books and also to get special rates for attending a musical event, go to the Mark Twain Building and get into a sporting event—free of charge! with that card.

Commentary

Like the Discover card that gives you cash back, this card gives a student entertainment back. For example:

● Don Dallas' Rivermen soccer team, which is always in contention for a national title. Although he lost a few key players, Dallas is to recruiting as J.R. Ewing is to money—he gets a lot of it. This year, Dallas has signed nine players.

● Ken Hudson's women soccer team is always a team that plays hard. Though a winning season wasn't in order in 1988-89, Hudson didn't give up. He went out and signed six new freshmen that are capable of making an impact in the next few years.

● Although the Riverwomen volleyball team plays on the road most of the time, many tournaments that are held here have excellent teams from across the nation. Head Coach Denise Silvester's team is ready to serve up a Riverwomen set-up or spike during a game.

● Though Mary Liston is a comedian and can crack jokes faster than former Olympian Mark Spitz can swim, her discipline helps out the men's and women's swim team to do the Army motto. Maybe a gold medal in the 1992 Olympics isn't their objective, but they try to be the best they can be.

● Rivermen Head Coach Rich Meckfessel has an all-star line-up that makes fans [for those who show-up] catch some dazzling plays. Meckfessel himself is a Bobby Knight type, but without the chair throwing. But the coach gets upset when plays aren't executed right. He knows how to recruit—legally—and, above all, he stress academics.

● Though the women's basketball team lost coach Mike Larson last March, the transition time shouldn't be that hard. Bobbi Morse has been making herself known to the players on the team by her many discipline rules. Perhaps the chemistry of the team and the coaching of Morse will make the Riverwomen better than their 16-11 record of 1988-89.

● Coach Jim Brady always has had his baseball team geared up for a season full of tough teams. Though players like to joke off the field, a serious brand of baseball is played when the Rivermen attempt to sink their opponents.

● The women's softball team had a fantastic season last year by winning the MIAA championship title. Over the course of last season, the Riverwomen knocked off many highly-ranked teams, thanks to solid pitching and timely hitting. Much of that success can be attributed to Head Coach Lisa Vogler's business-like attitude on the field.

● Many media outlets in the St. Louis area don't cover men's ten-

GAMES

from page 6

nis, women's tennis and golf. The coaches, Jeff Zoellner, Pam Steinmetz and Jim Neiderkorn respectively, are good coaches and wind up to be good friends to their players. They do care about their sports and hope that fans would care more to take time out and watch them play.

On September 3, three segments of promotion and fun will be offered before and during the classic soccer battle between the Rivermen and the Cougars of Southern Illinois University-Edwardsville.

Part One is a rematch of alumni between the odd-year graduates and even-year graduates. I wouldn't call this an old-timers game, but one that will bring back memories.

Part Two is a promotion by the hard working Jeff Kuchno, the Sports Information Director at UM-St. Louis. The first 500 fans

that attend the game will receive a free Coca-Cola squeeze bottle.

During halftime, part three begins. Fans will get a chance to shoot the soccer ball past a yet unannounced celebrity goalkeeper.

The reason behind all this hoopla is Kuchno's hard work. He is a former Current sports scribe and editor-in-chief and realizes the importance of improving school spirit. He began his mission last year with Spirit Night, an event where the noisiest group during a Rivermen basketball game would win four pizzas.

This former sports editor is sending a message to you, the students of UM-St. Louis (or UMSL). Follow the slogan of Major League Baseball and "Get Up And Go!"



Do your dreams include college?
Let us help with a student loan.
Now is the time to apply.
Call today for details!

Normandy Bank

383-5555 7151 NATURAL BRIDGE ST. LOUIS, MO. 63121 Member FDIC

A FREE GIFT JUST FOR CALLING PLUS RAISE UP TO \$1,700.00 IN ONLY TEN DAYS !!!
Student groups, fraternities and sororities needed for marketing project on campus. For details plus a FREE GIFT, group officers call 1-800-950-8472. Ext 20.

Help Wanted

HELP WANTED ATTENTION - HIRING! Government jobs - your area. Many immediate openings without waiting list or test. \$17,840 - \$16,485. Call 1-602-838-8885. EXT. R 6729.

AIRLINES NOW HIRING. Flight Attendants, Travel Agents, Mechanics, Customer Service. Listings. Salaries to \$105K. Entry level positions. Call (1) 805-687-6000 Ext. A-2166

Research Interviewers Flexible, Part time evenings & week-end hours. PC familiarity or typing skills a plus. \$5.00 an hour. Hazelwood Trade center. Linberg & 270. 731-2005.

OVERSEAS JOBS. Also cruiseships. \$10,000-\$105,000/yr! Now Hiring! Listings! (1) 805-687-6000 Ext. OJ-2166

Data Entry, Taylor Morley Simon. Part time positions are available. Some experience required. Noon to 5 pm M-F. 434-9000. Ask for Data Processing.

EARN \$2,000-\$4,000 Searching for employment that permits working your own hours, but still challenging enough for your entrepreneurial skills? Manage programs for Fortune 500 companies. Earn \$2,000 to \$4,000. Call 1-800-932-0528, ext. 21

COLLEGE/CAMPUS REPRESENTATIVE EARN TOP \$. FLEXIBLE HOURS FUN. ENJOYABLE. REWARDING GROSS UP TO \$20,000 PER YEAR BY HELPING FRIENDS RECEIVE GRANTS/SCHOLARSHIPS. FOR INFORMATION PLEASE CALL : (213) 967-2115.

A Major Bank Downtown is looking for GENERAL CLERKS & Inscrber Clerks all shifts. Students may apply in 346 WOODS or call 553-5317.

ON CAMPUS Interviews for NATIONAL FOODS. Begin Sept. 20, 1989. Sign up in 346 WOODS Hall NOW.

A famous company needs people to work in this furniture warehouse store \$5 per hour. From 3-8. Apply in Room 346 WOODS Hall.

ATTENTION: EARN MONEY READING BOOKS! \$32,000/year income potential. Details. (1) 602-838-8885 Ext. Bk 6729.

GOVERNMENT JOBS \$16,040-\$59,230/yr. Now Hiring. Call (1) 805-687-6000 Ext. R-2166 for current federal list.

Part time job gardening, shopping. Odd jobs. Flexible hours, good pay. Car required. Call 872-8531 and leave message.

For Rent

NORMANDY EAST & WEST APARTMENTS. 1 & 2 Brm apartments, hardwood floors, appliances, C/A, off street parking, laundry facilities, storage. \$310.00-\$325.00. KOHNER PROPERTIES 862-5955.

GOVERNMENT HOMES from \$1 (U repair). Delinquent tax property. Repossessions. Call 805-687-6000 Ext. GH-2166 for current repo list.

PERSONAL ROOMMATE WANTED. FULLY FURNISHED. 2BR, AIR CONDITIONED. POOL. TENNIS \$175/mo 1/2 UTILITIES. 3 MINUTES FROM UMSL. 383-3504. ASK FOR MIKE.

Two females looking for a third to share a townhouse apartment in Bridgeton. \$155.00 per month plus utilities. Call Pam or Debbie at 298-0439.

RESEARCH INFORMATION

Largest Library of Information in U.S. - all subjects

Order Catalog Today with Visa/MC or COD
TOLL FREE HOT LINE 800-351-0222
In Calif. (213) 477-8226
Or, rush \$2.00 to: Research Information
11322 Idaho Ave. #206-A, Los Angeles, CA 90025

ADVERTISERS:

For sure
RESULTS call 553-5175. We'll help you make an IMPACT!



PUT YOUR SKILLS TO WORK!

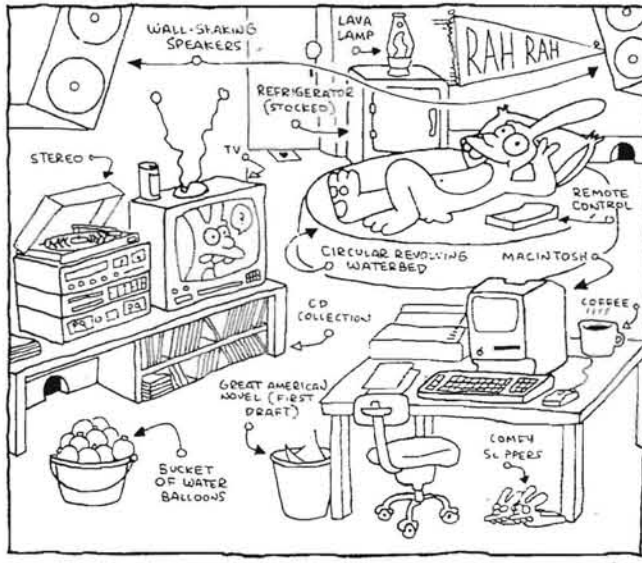
PERSONNEL POOL
427-5555
SCHOLARSHIPS AVAILABLE
NO FEES

At Personnel Pool we have challenging positions for qualified people. WE NEED:

WORD PROCESSORS
SECRETARIES
RECEPTIONISTS
FILE CLERKS
SHIPPING CLERKS

Whether your experience is rusty or recent, we have varied shifts available. Please call for an appt.

If you can find a Macintosh in this room, we might put one in yours. Free.



In what will surely be the easiest test of your intellect this term, Apple invites you to try winning a free Apple® Macintosh® Plus personal computer merely by finding it in this drawing.

We'll even give you a hint: It's not the table, the lamp, or the chair.

Now you're on your own.

To register, look for contest details where Macintosh computers are sold on your campus. Oh, all right, we'll give you a hint for that, too: Look at the bottom of this ad.

But do it really, really fast. Because only one Macintosh is being given away on this campus, and it's going to happen soon.

Soon, as in right away. Pronto. Quick-like.

But hey, you can take a hint.



Somebody's going to win a free Macintosh.

Enter August 28th-September 23rd
University of Missouri/St. Louis
Social Science & Business Bldg., Rm. 202

Think Smart, Shop Smart, BIZMART!

0387	REPORT COVERS, L	
MFG. LIST \$1.25		0.49
070738202009	10-1/2X8, FILLER	
MFG. LIST \$2.05		3.99
025932753213	8-1/2X11-3/4" LE	
MFG. LIST \$15.59		0.89
400300144945	WHITE, LIQUID PA	
MFG. LIST \$1.59		
MEMBER #	SUB TOTAL	20.07
	7.00% TAX	1.40
	TOTAL	\$21.47
	CASH	25.47
	CHANGE	4.00
	IPV LN 31400 06233044	
*****	YOUR PURCHASES	*****
CATALOG LIST PRICES		\$55.23
WOULD HAVE COST YOU		
BIZMART'S LOW		\$20.07
EVERYDAY PRICES =		
*****	YOU SAVED	\$35.16

THAT'S A SAVINGS OF		64%
THANK YOU FOR SHOPPING AT BIZMART		

By now you've probably heard about BizMart and our promise of 40-60% off every day. We think it's a pretty smart deal, but just in case you need more convincing, take a closer look at our sales receipt. From picking up some of the basic everyday

school supplies at BizMart and comparing them to our competitors', you can really see what a difference shopping at BizMart makes. So this semester when you're ready to stock up for school, remember to think smart, shop smart, BIZMART!

BIZMART®

Office Products Supercenter

If you need it for school... BIZMART HAS IT!

BIC DISPOSABLE .5mm PENCIL
Perfect for school use. Each pencil has its own eraser. #1006628. List \$1.98

7 PACK! \$1.15 EVERYDAY

MEAD SPIRAL NOTEBOOK
#1004549. List \$1.10.

EVERYDAY 50¢

BIC BRITE LINERS
Six different colors at one low price. #1006604. List \$2.98.

\$1.84 EVERYDAY

PAPERMATE STICK PEN
Available in 3 colors. #1003395. List \$3.60.

EVERYDAY 89¢ PER DOZEN

SMITH CORONA 400 DLD MEMORY TYPEWRITER
50,000 word dictionary. 7,000 character memory. #3001800. List \$269.00.

EVERYDAY \$188.00

SHEAFFER 2 POCKET PORTFOLIO #50-125. List \$.42.

EVERYDAY 25¢

HEWLETT PACKARD HP-20S CALCULATOR
Over 150 functions. #3001805. List \$49.95.

\$43.38 EVERYDAY

NOTEBOOK PAPER
200 count #1006664. List \$2.05.

EVERYDAY 49¢

GUARANTEED LOWEST PRICES

Bizmart Guarantees the lowest prices in town. Bizmart will meet or beat any currently advertised price on any of the 7000 products that we stock!

Bizmart accepts the following major credit cards:



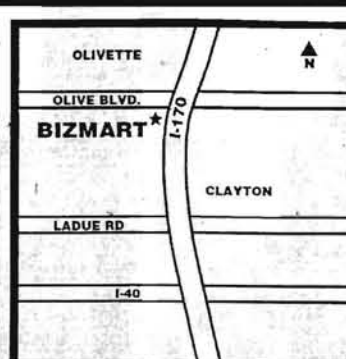
Bizmart has made every effort to make sure the prices listed are accurate; however, we are not responsible for typographical errors. We reserve the right to limit quantities.



9901 Watson Road, Suite 111
Crestwood, MO 63126
(314) 821-8332



21 Village Square, Shopping Center
Hazelwood, MO 63042
(314) 895-4701



1010 Collingwood
Olivette, MO 63132
(314) 991-2336

STORE HOURS
Mon-Fri, 8:00 AM-9:00 PM
Sat, 9:00 AM-9:00 PM
Sun, 12:00 PM-6:00 PM